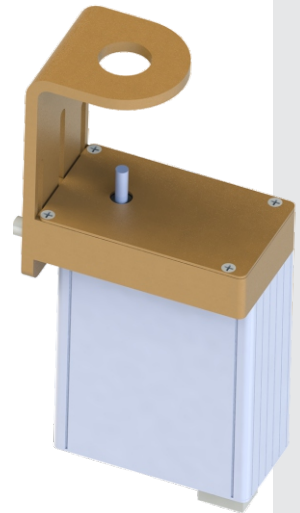


## Model 396/398/399/391 Pocket Indexer



- Color LCD touch screen for graphical and numerical display, providing an intuitive and user friendly operator interface. Material names can be displayed on the screen
- Can index up to 30 pockets
- No clutch needed for pocket jams due to automatic motor current sensing
- Includes Rotary, Banana and Continuous modes.
- Mounts available for 1 inch bolt, 1.25 inch bolt, and 2-3/4" CFF"
- Speed control - Speed at crucible:  
Model 396/398, continuous 0.25 to 0.50 rpm, pocket change speed to 5 rpm  
Model 399, continuous 0.03 to 0.20 rpm, pocket change speed to 1 rpm  
Model 391, continuous 0.05 to 0.50 rpm, pocket change speed to 2 rpm
- Remote pocket selected by optically isolated inputs, up to 6 direct and up to 30 binary (software selectable active or passive)
- RS-232 communication
- Relay isolated outputs In position up to 6 pockets directly and up to 30 pockets using binary, Mode signal and In-position signal
- Indexer model 396 is for EB source models 224/244/246/249  
Indexer model 398 is for all standard multi-pocket EB sources  
Indexer model 399 is for EB source models 287/295  
Indexer model 391 is for EB source models 298



### Crucible Types



Pocket      Banana      Continuous

### Included Features:

- The indexer can be set up to rotate the shortest distance to the desired pocket
- The indexer can be set up for bi-directional operation, providing automatic recovery from pocket jams by reversing and approaching from the opposite direction

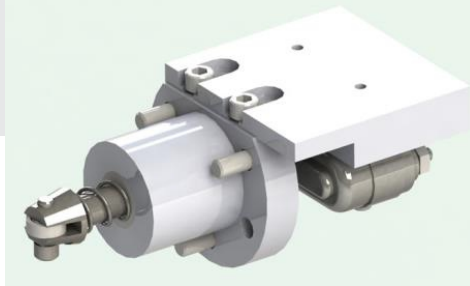
### Optional Feature:

- The In-vacuum Pocket Number Switch provides confirmation of pocket location (see back of brochure)

## Specifications

Number of pockets 4 to 30  
Controller dimensions 19 inch rack 2U, 3 1/2" high x 9 3/8" deep  
Motor Assembly Dimensions 6.40" (162mm) x 4.60" (117mm) x 2.50" (64mm)  
Inputs 8 optically isolated, active (4 to 24V DC or AC), or passive (contact closure)  
Outputs 8 relay contacts NO/NC @ max 1A, 24 DC or AC  
Power Input 90-260VAC, 50-60 Hz

## Model 396/398/399/391 Pocket Indexer

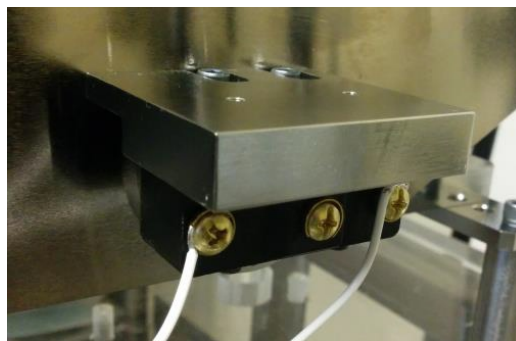


### Optional In-vacuum Pocket Number Switch

Optional in-vacuum in-pocket confirmation kits are available for Telemark source models 271, 274 and 294. When enabled from the touch screen, the software will check that the crucible is in-pocket and count the number of pockets it goes past. This provides confirmation to the optical encoder and home switch inside the motor assembly to make sure that no slippage has happened between the motor assembly and the e-beam source.

This requires an e-beam source bearing housing (hub) that matches the number of pockets in the e-beam source crucible and two pins on a feedthrough. The switch assembly mounts in the empty side drive hole on the side arm.

Supplied Kapton wires are wired to the “comm” and “normally closed” terminals of the switch and to an electrical feedthrough. The atmosphere side is wired to the supplied cable that comes with a 9 pin D connector, which is plugged into J3 of the motor assembly.



In-vacuum In-pocket Home Switch Installation