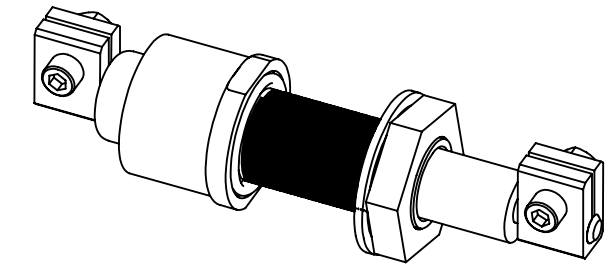
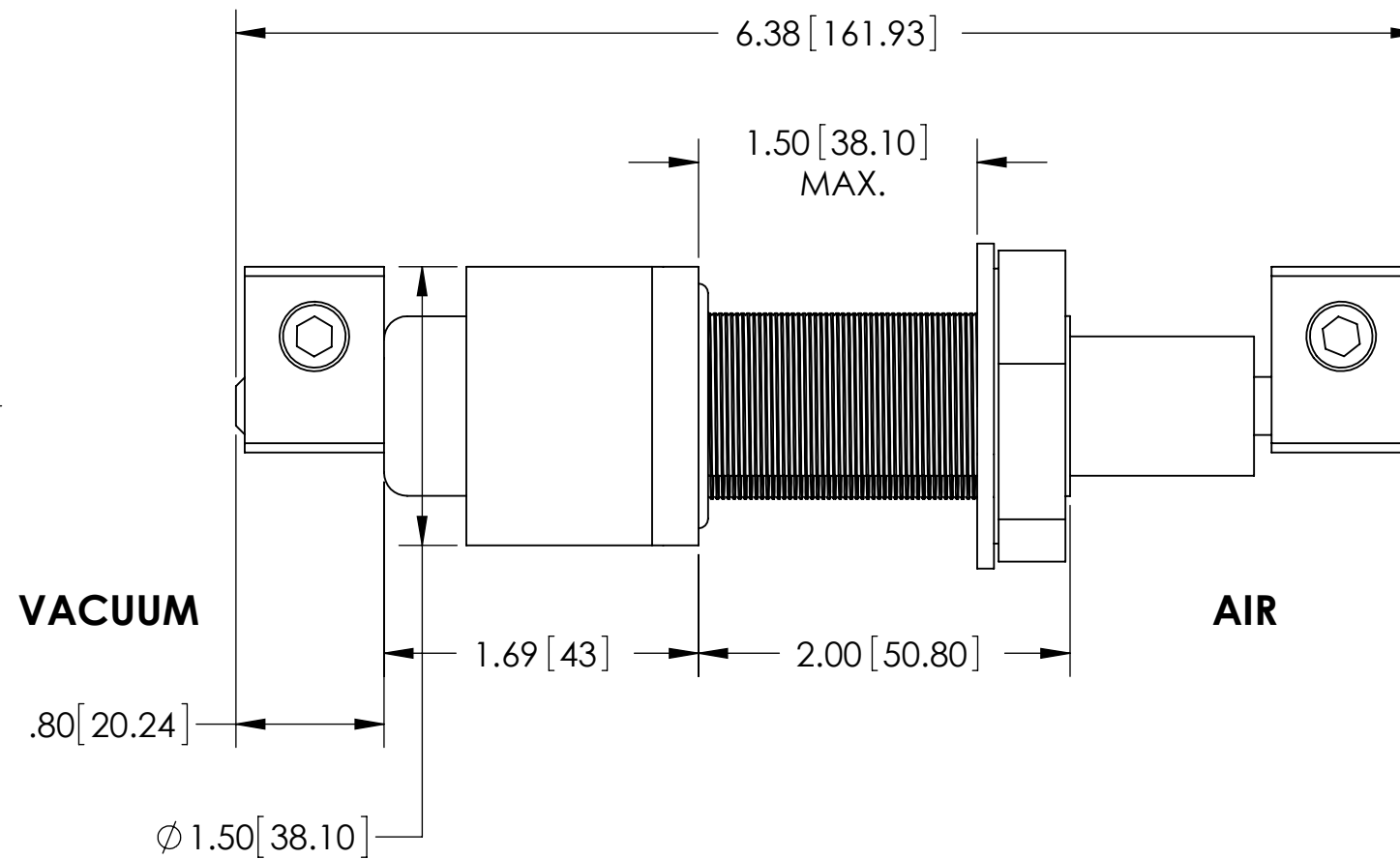
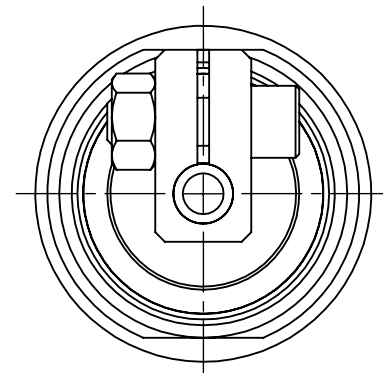


TELEMARK

FEEDTHROUGH DRAWINGS

Drawing	Part No.	Description	Page
Bolt Feedthroughs			
R275-0111	275-0001-1	HV Feedthru, 1"	2
	275-0001-2	HV Feedthru, 1.25"	
R275-0109	275-0002-1	Rotary 1/4 Feedthru, 1"	3
	275-0002-2	Rotary 1/4 Feedthru, 1.25"	
	275-0002-6	Rotary 3/8 Feedthru, 1.25"	
R275-0120	275-0012-1	Feedthru, Rotary, Magnetic Seal, 1"	4
R275-0108	275-0006-1	Rt. Angle Rotary Feedthru, 1"	5
	275-0006-2	Rt. Angle Rotary Feedthru, 1.25"	
	275-0016-1	Right Angle Rotary Ft, Magnetic Seal, 1"	
R275-0110	275-0003-1	Water Feedthru Assembly, 1"	6
	275-0003-2	Water Feedthru Assembly, 1.25"	
R275-0126	275-0004-1	1/2" Water Feedthru Assy., 1"	7
	275-0004-2	1/2" Water Feedthru Assy., 1.25"	
R275-0112	275-0008-1	8 Pin Instrument Feedthru, Octal, 1"	8
	275-0008-2	8 Pin Instrument Feedthru, Octal, 1.25"	
CF Flange Feedthroughs			
R275-0117	275-0001-3	HV Feedthru, CFF	9
R275-0122	275-0019-1	Dual Pass HV feethru, CFF (8AWG)	10
	275-0019-2	Dual Pass HV Feedthru, CFF (10 AWG)	
R275-0124	275-0002-3	Rotary 1/4 Feedthru, CFF	11
R275-0125	275-0012-3	Feedthru, Rotary, Magnetic Seal, CFF	12
R275-0114	275-0003-4	Water Feedthru Assy. 2-3/4 CFF	13
R275-0127	275-0014-1	4 Pin Instrument Feedthru, CFF	14
R275-0115	275-0008-3	8 Pin Instrument Feedthru, Octal, CFF	15
HV Cover Assemblies			
R275-0113	275-0210-3	HV Cover Assembly, 1"	16
	275-0210-4	HV Cover Assembly, 1.25"	
	275-0211-2	HV Cover Assembly, CFF	
	275-0212-2	HV Cover Assembly, CFF, 2 pass	

ECN	ZONE	REV	DESCRIPTION	BY	DATE
		A	REFERENCE RELEASE	D.LY	2/13/2006
		A1	UPDATE	PWF	11/1/2012



ISOMETRIC VIEW

12,000 VOLT, 70 AMP
OFHC COPPER CONDUCTOR
FARADAY CUP/ COATING SHIELDING

Part Number	Through hole	
275-0001-1	1.00 inch	25 mm
275-0001-2	1.25 inch	32 mm

INCH [mm]

UNLESS OTHERWISE SPECIFIED GLOBAL TOLERANCES	DWG BY D. LY DATE 2/13/06	MATERIAL:
INCHES [mm]	CHECK BY DATE	FINISH:
.X +/- .03 [0.762]	PROJ ENG DATE	THIRD ANGLE PROJECTION
.XX +/- 0.01 [0.254]	MFG ENG DATE	
.XXX +/- 0.005 [0.127]	DO NOT SCALE DRAWING	
ANGLES +/- .5°	FILE NUMBER - R275-0111	
SURF FINISH 63 RMS	INITIAL PROJECT - E-GUN	

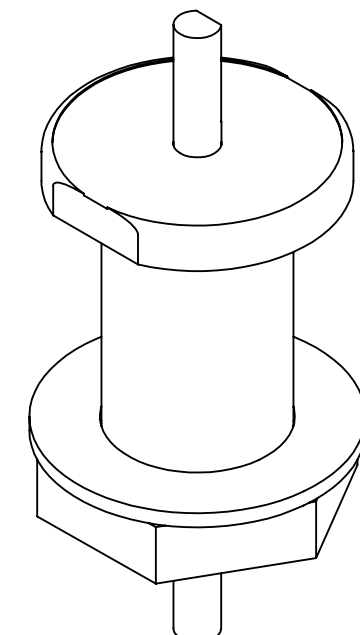
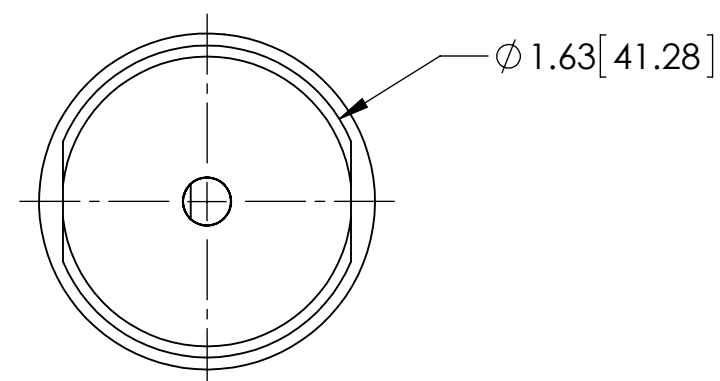
TELEMARK telemark.com

HIGH VOLTAGE FEEDTHRU

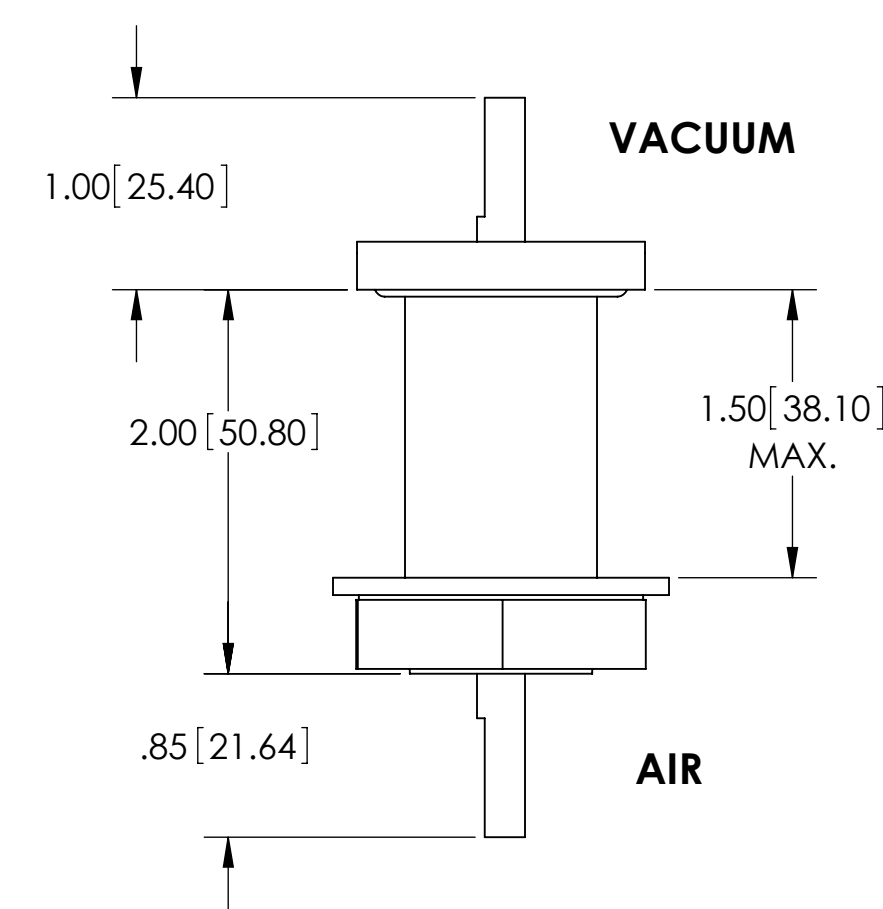
CONFIDENTIAL. This document contains proprietary data of TELEMARK and is not to be copied or distributed without the prior written consent of TELEMARK. The receipt or possession of the document does not convey any rights to reproduce it, disclose its contents, or to manufacture, use or sell anything incorporating the concepts and details disclosed by it. Such concepts and details are not to be used other than for the benefit of TELEMARK and are not to be disclosed to others without the prior written consent of an officer of TELEMARK.

B	SCALE 1:1	DWG NO. R275-0111	REV A1
	SHEET 1 of 1		

ECN	ZONE	REV	DESCRIPTION	BY	DATE
		A	RELEASE FOR REFERENCE	D. LY	2/9/2006
		A1	UPDATE	PWF	11/1/2012



ISOMETRIC VIEW



INCH [mm]

Part Number	Shaft	Through hole	
275-0002-1	1/4"	1.00 inch	25 mm
275-0002-2	1/4"	1.25 inch	32 mm
275-0002-6	3/8"	1.25 inch	32 mm

UNLESS OTHERWISE SPECIFIED GLOBAL TOLERANCES	
INCHES	[mm]
.X +/- .03	[0.762]
.XX +/- 0.01	[0.254]
.XXX +/- 0.005	[0.127]
ANGLES +/- .5°	
SURF FINISH 63 RMS	

DWG BY	D. LY	DATE	2/13/06
CHECK BY		DATE	
PROJ ENG		DATE	
MFG ENG		DATE	
DO NOT SCALE DRAWING			
FILE NUMBER	- R275-0109		
INITIAL PROJECT	- E-GUN		

MATERIAL:	
FINISH:	
THIRD ANGLE PROJECTION	

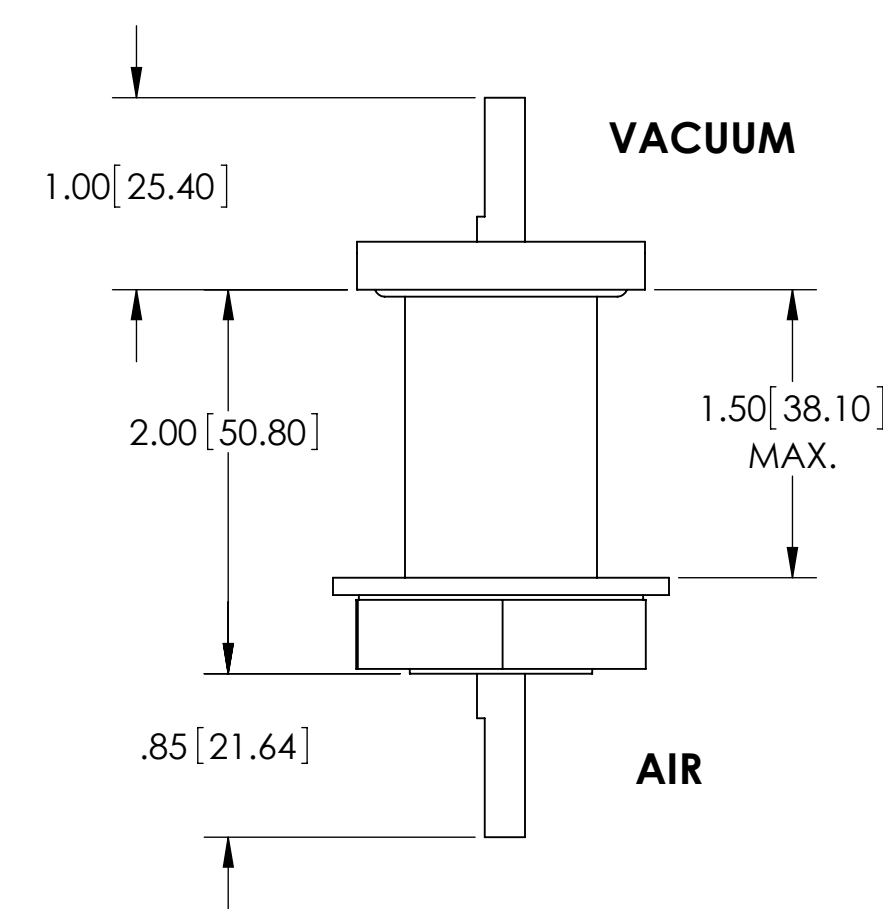
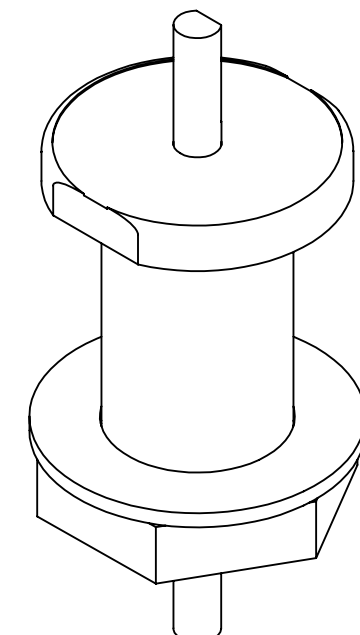
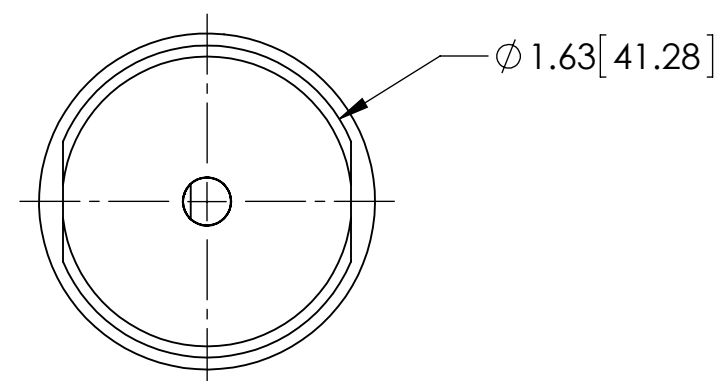
TELEMARK telemark.com

ROTARY 1/4" FEEDTHRU

CONFIDENTIAL. This document contains proprietary data of TELEMARK and is not to be copied or distributed without the prior written consent of TELEMARK. The receipt or possession of the document does not convey any rights to reproduce it, disclose its contents, or to manufacture, use or sell anything incorporating the concepts and details disclosed by it. Such concepts and details are not to be used other than for the benefit of TELEMARK and are not to be disclosed to others without the prior written consent of an officer of TELEMARK.

B	SCALE	1:1	DWG NO.	R275-0109	REV	A1
	SHEET	1 of 1				

ECN	ZONE	REV	DESCRIPTION	BY	DATE
		A	RELEASE FOR REFERENCE	D. LY	2/9/2006
		A1	UPDATE	PWF	11/1/2012



ISOMETRIC VIEW

INCH [mm]

Part Number	Shaft	Through hole	
275-0012-1	1/4"	1.00 inch	25 mm

UNLESS OTHERWISE SPECIFIED GLOBAL TOLERANCES	
INCHES	[mm]
.X +/- .03	[0.762]
.XX +/- 0.01	[0.254]
.XXX +/- 0.005	[0.127]
ANGLES +/- .5°	
SURF FINISH 63 RMS	

DWG BY	D. LY	DATE	2/13/06
CHECK BY		DATE	
PROJ ENG		DATE	
MFG ENG		DATE	
DO NOT SCALE DRAWING			
FILE NUMBER	- R275-0109		
INITIAL PROJECT	- E-GUN		

MATERIAL:	
FINISH:	
THIRD ANGLE PROJECTION	

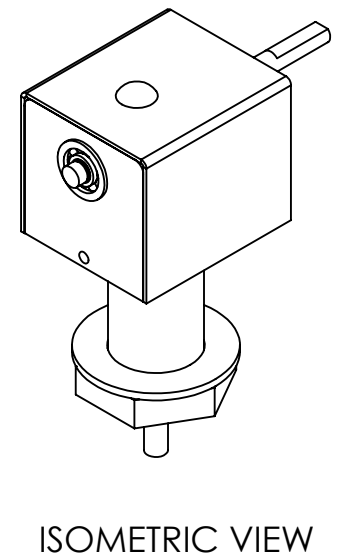
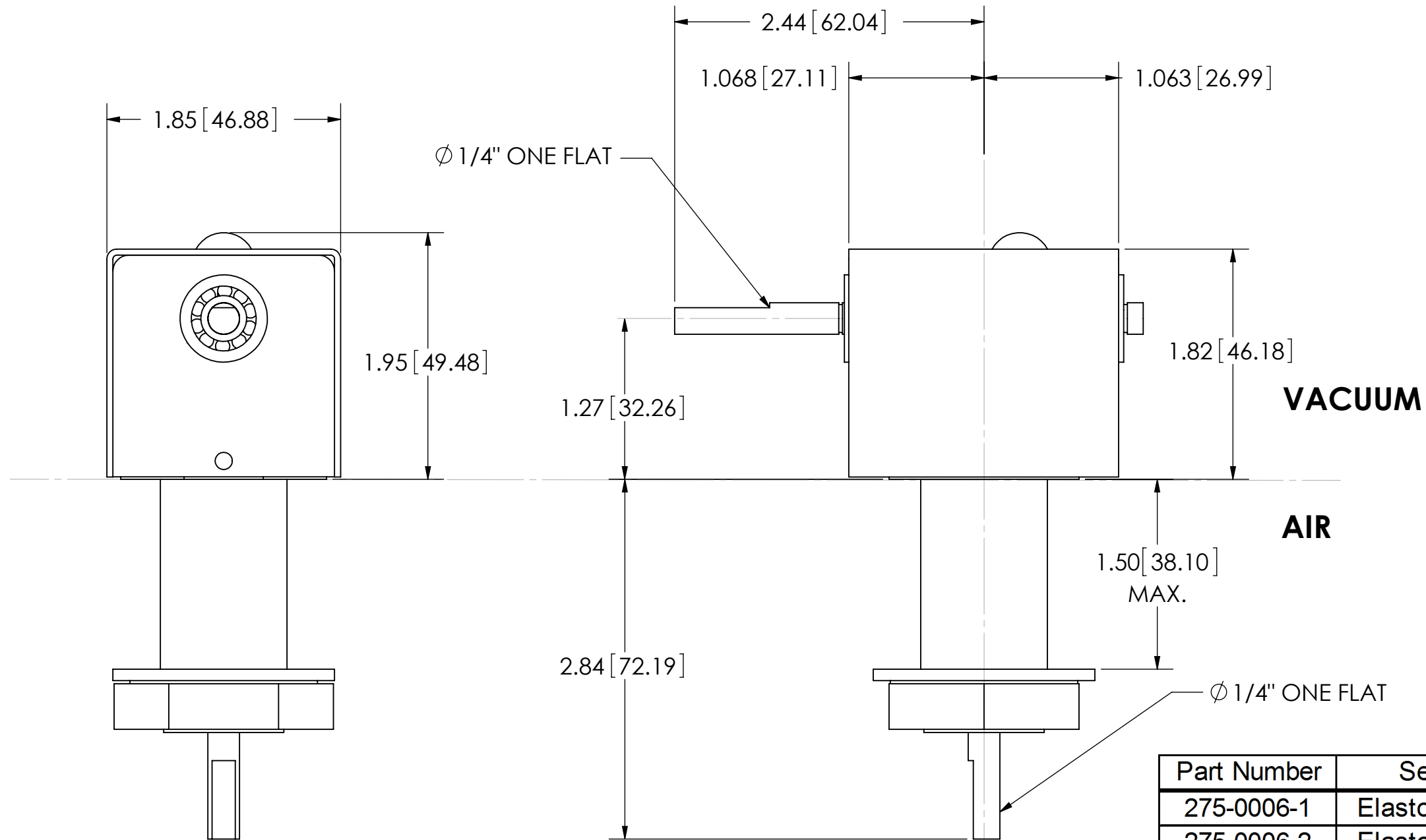
TELEMARK telemark.com

MAGNETIC FUIDL SEAL FEEDTHRU

CONFIDENTIAL. This document contains proprietary data of TELEMARK and is not to be copied or distributed without the prior written consent of TELEMARK. The receipt or possession of the document does not convey any rights to reproduce it, disclose its contents, or to manufacture, use or sell anything incorporating the concepts and details disclosed by it. Such concepts and details are not to be used other than for the benefit of TELEMARK and are not to be disclosed to others without the prior written consent of an officer of TELEMARK.

B	SCALE	1:1	DWG NO.	R275-0120	REV	A1
	SHEET	1 of 1				

ECN	ZONE	REV	DESCRIPTION	BY	DATE
		A	REFERENCE RELEASE	D.LY	2/6/2006
		A1	UPDATE	PWF	11/1/2012



Part Number	Seal	Through hole	
275-0006-1	Elastomeric	1.00 inch	25 mm
275-0006-2	Elastomeric	1.25 inch	32 mm
275-0016-1	Magnetic Fulid	1.00 inch	25 mm

INCH [mm]

UNLESS OTHERWISE SPECIFIED	
GLOBAL TOLERANCES	
	INCHES [mm]
.X	+/- .03 [0.762]
.XX	+/- 0.01 [0.254]
.XXX	+/- 0.005 [0.127]
ANGLES +/- .5°	
SURF FINISH 63 RMS	

DWG BY	D. LY	DATE	2/6/06
CHECK BY		DATE	
PROJ ENG		DATE	
MFG ENG		DATE	
DO NOT SCALE DRAWING			
FILE NUMBER	- R275-0108		
INITIAL PROJECT	-		

MATERIAL:	-
FINISH:	
THIRD ANGLE PROJECTION	

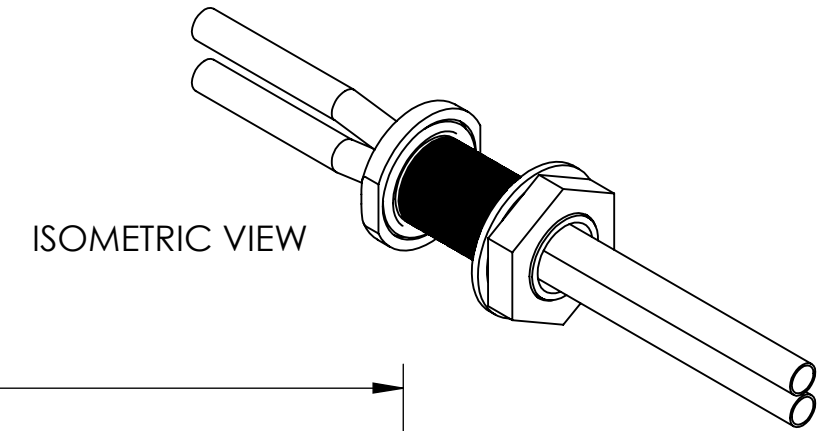
TELEMARK telemark.com

RIGHT ANGLE FEEDTHRU

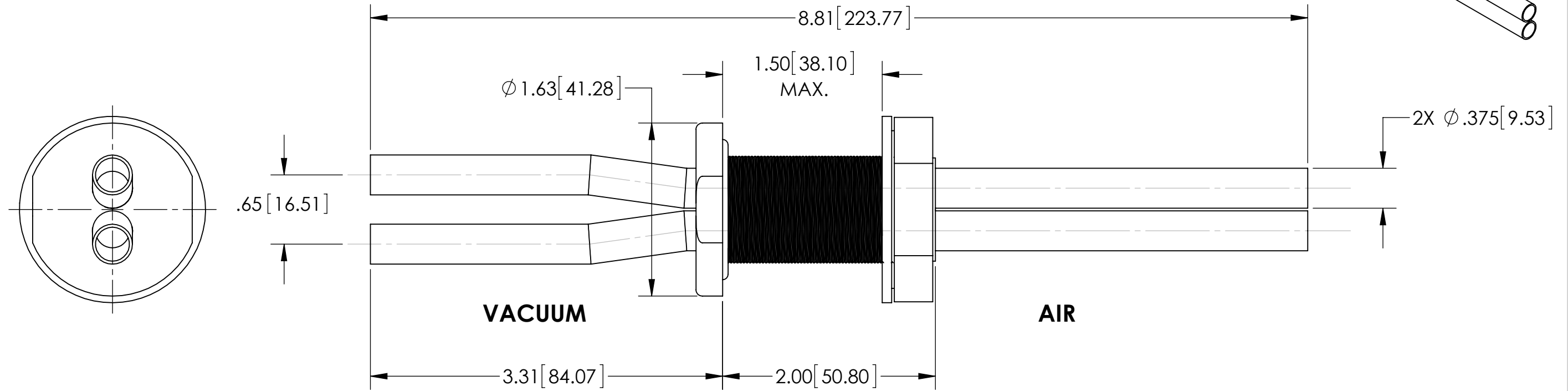
CONFIDENTIAL. This document contains proprietary data of TELEMARK and is not to be copied or distributed without the prior written consent of TELEMARK. The receipt or possession of the document does not convey any rights to reproduce it, disclose its contents, or to manufacture, use or sell anything incorporating the concepts and details disclosed by it. Such concepts and details are not to be used other than for the benefit of TELEMARK and are not to be disclosed to others without the prior written consent of an officer of TELEMARK.

B	SCALE	1:2	DWG NO.	R275-0108	REV	A1
	SHEET	1 of 1				

ECN	ZONE	REV	DESCRIPTION	BY	DATE
		A	REFERENCE RELEASE	D. LY	2/13/2006
		A1	UPDATE	PWF	11/1/2012



ISOMETRIC VIEW



Part Number	Through hole	
275-0003-1	1.00 inch	25 mm
275-0003-2	1.25 inch	32 mm

INCH [mm]

UNLESS OTHERWISE SPECIFIED GLOBAL TOLERANCES	
INCHES	[mm]
.X +/- .03	[0.762]
.XX +/- 0.01	[0.254]
.XXX +/- 0.005	[0.127]
ANGLES +/- .5°	
SURF FINISH 63 RMS	

DWG BY **D. LY** DATE **2/13/06**
 CHECK BY DATE
 PROJ ENG DATE
 MFG ENG DATE
 DO NOT SCALE DRAWING
 FILE NUMBER - R275-0110
 INITIAL PROJECT - E-GUN

MATERIAL:
 FINISH:
 THIRD ANGLE PROJECTION

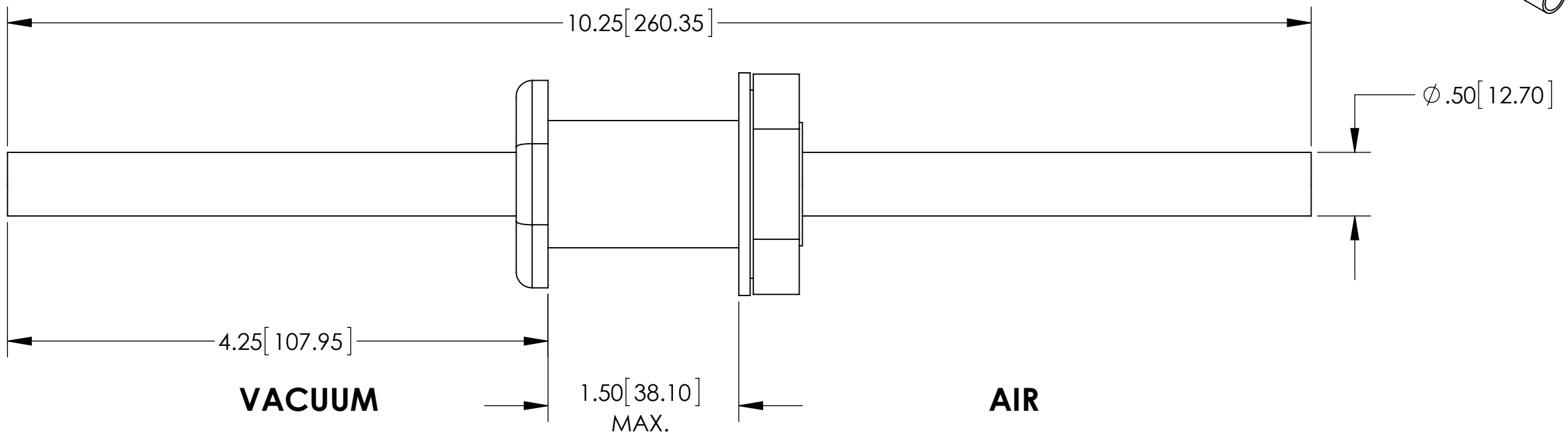
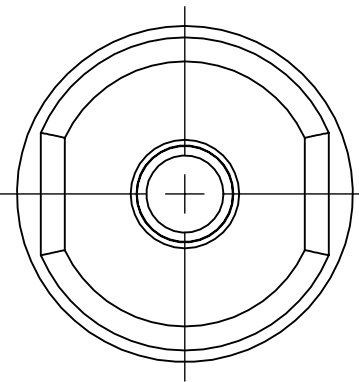
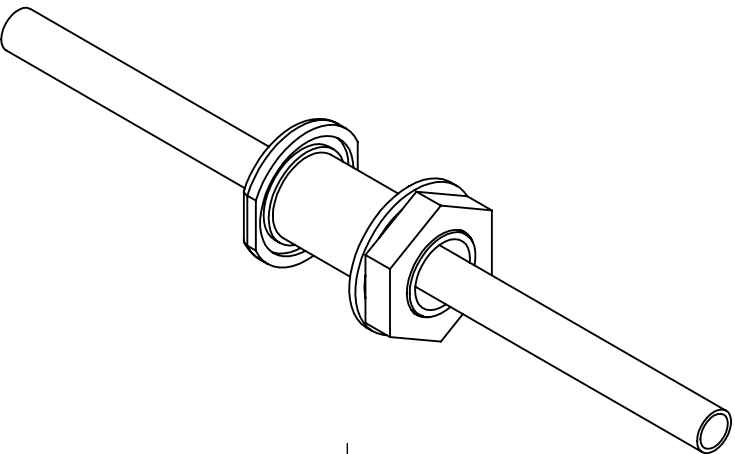
TELEMARK telemark.com

**DUAL WATER
 3/8" FEEDTHRU**

CONFIDENTIAL. This document contains proprietary data of TELEMARK and is not to be copied or distributed without the prior written consent of TELEMARK. The receipt or possession of the document does not convey any rights to reproduce it, disclose its contents, or to manufacture, use or sell anything incorporating the concepts and details disclosed by it. Such concepts and details are not to be used other than for the benefit of TELEMARK and are not to be disclosed to others without the prior written consent of an officer of TELEMARK.

B SCALE 1:1 DWG NO. **R275-0110** REV **A1**
 SHEET 1 of 1

ECN	ZONE	REV	DESCRIPTION	BY	DATE
		A	RELEASE	PWF	11/2/2012



INCH [mm]

Part Number	Through hole	
275-0004-1	1.00 inch	25 mm
275-0004-2	1.25 inch	32 mm

UNLESS OTHERWISE SPECIFIED GLOBAL TOLERANCES	DWG BY CHECK BY PROJ ENG MFG ENG	DATE DATE DATE DATE	MATERIAL:
INCHES [mm] .X +/- .03 [0.762] .XX +/- 0.01 [0.254] .XXX +/- 0.005 [0.127]	DO NOT SCALE DRAWING		FINISH:
ANGLES +/- .5° SURF FINISH 63 RMS	FILE NUMBER - R275-0126 INITIAL PROJECT -	THIRD ANGLE PROJECTION	

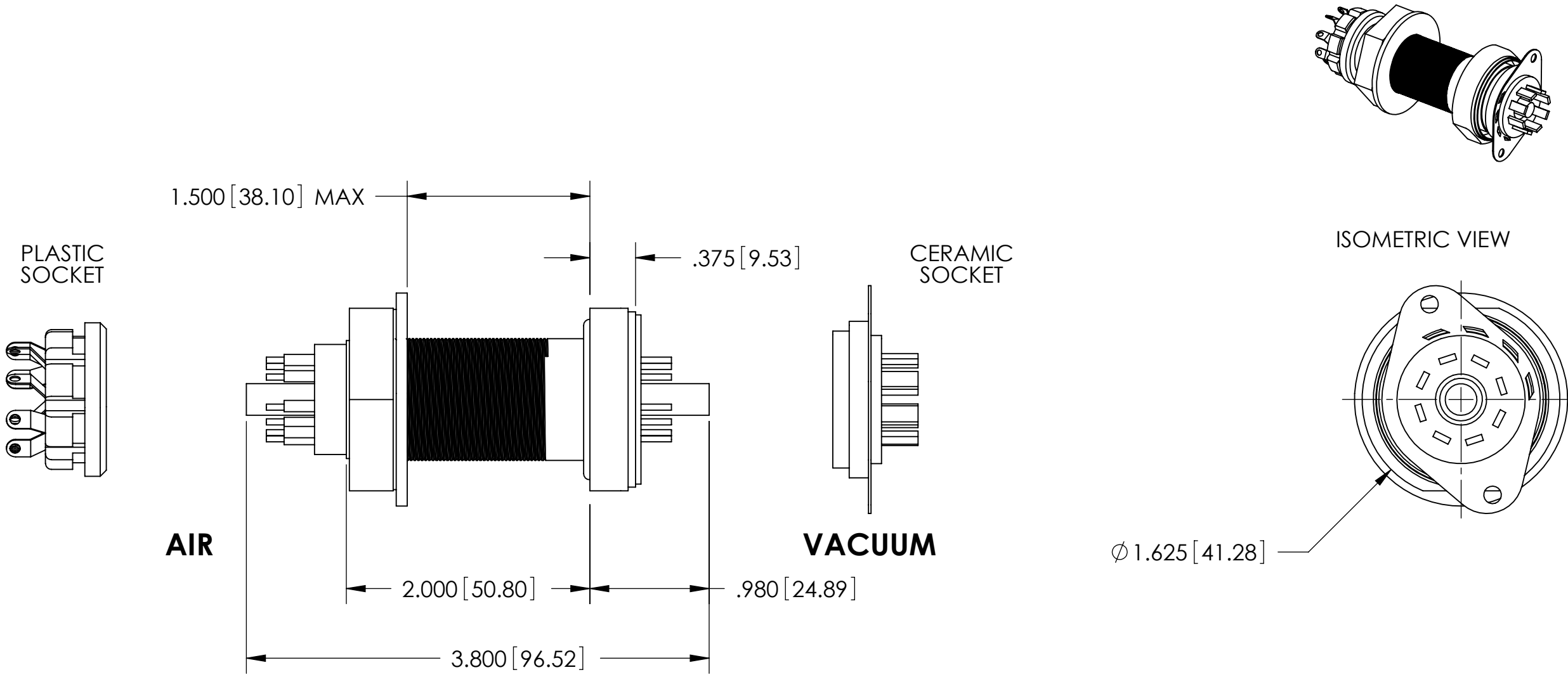
TELEMARK telemark.com

1/2" WATER FEEDTHRU

CONFIDENTIAL. This document contains proprietary data of TELEMARK and is not to be copied or distributed without the prior written consent of TELEMARK. The receipt or possession of the document does not convey any rights to reproduce it, disclose its contents, or to manufacture, use or sell anything incorporating the concepts and details disclosed by it. Such concepts and details are not to be used other than for the benefit of TELEMARK and are not to be disclosed to others without the prior written consent of an officer of TELEMARK.

B	SCALE 1:1	DWG NO. R275-0126	REV A
	SHEET 1 of 1		

ECN	ZONE	REV	DESCRIPTION	BY	DATE
		A	RELEASE FOR REFERENCE	D. LY	2/13/2006
		A1	UPDATE	PWF	11/2/2012



INCH [mm]

250 VOLTS, 10 AMP

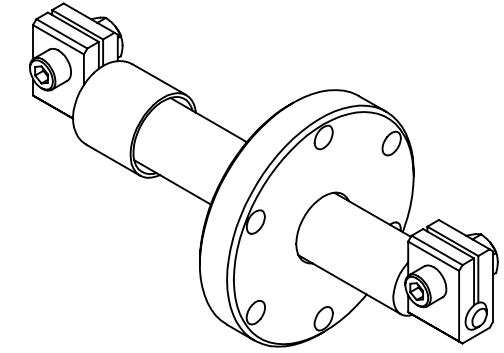
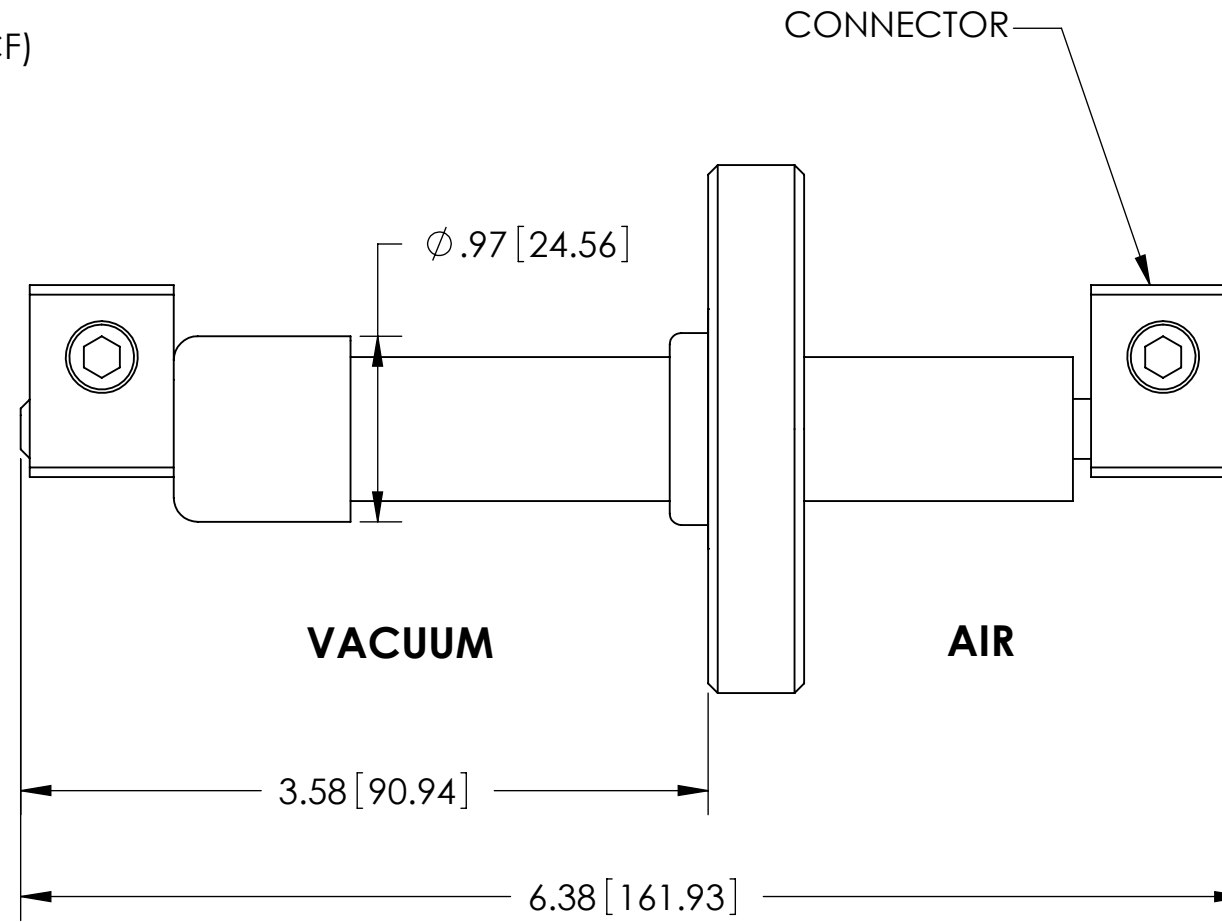
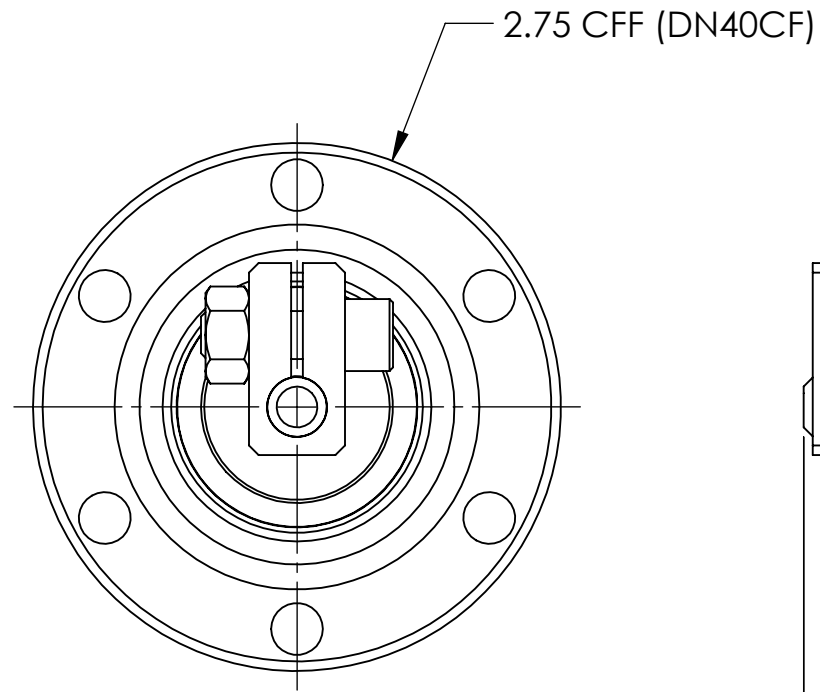
Part Number	Through hole	
275-0008-1	1.00 inch	25mm
275-0008-2	1.25 inch	32mm

UNLESS OTHERWISE SPECIFIED GLOBAL TOLERANCES	DWG BY D. LY DATE 2/13/06	MATERIAL:	TELEMARK telemark.com
INCHES [mm] .X +/- .03 [0.762] .XX +/- 0.01 [0.254] .XXX +/- 0.005 [0.127]	CHECK BY DATE PROJ ENG DATE MFG ENG DATE	FINISH:	
ANGLES +/- .5° SURF FINISH 63 RMS	DO NOT SCALE DRAWING	THIRD ANGLE PROJECTION	OCTAL FEEDTHRU

CONFIDENTIAL. This document contains proprietary data of TELEMARK and is not to be copied or distributed without the prior written consent of TELEMARK. The receipt or possession of the document does not convey any rights to reproduce it, disclose its contents, or to manufacture, use or sell anything incorporating the concepts and details disclosed by it. Such concepts and details are not to be used other than for the benefit of TELEMARK and are not to be disclosed to others without the prior written consent of an officer of TELEMARK.

B	SCALE 1:1	DWG NO. R275-0112	REV A1
	SHEET 1 of 1		

ECN	ZONE	REV	DESCRIPTION	BY	DATE
		A	RELEASE FOR REFERENCE	D.LY	2/27/2006
		A1	UPDATE	PWF	11/1/2012



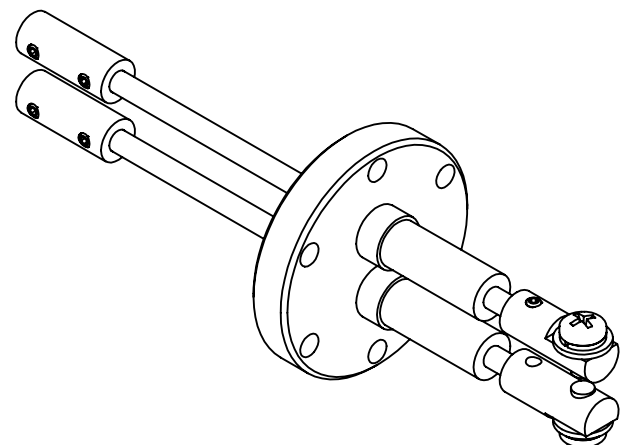
12,000 VOLT, 70 AMP
OFHC COPPER CONDUCTOR
FARADAY CUP/ COATING SHIELDING
BAKEABLE TO 250 °C

INCH [mm]

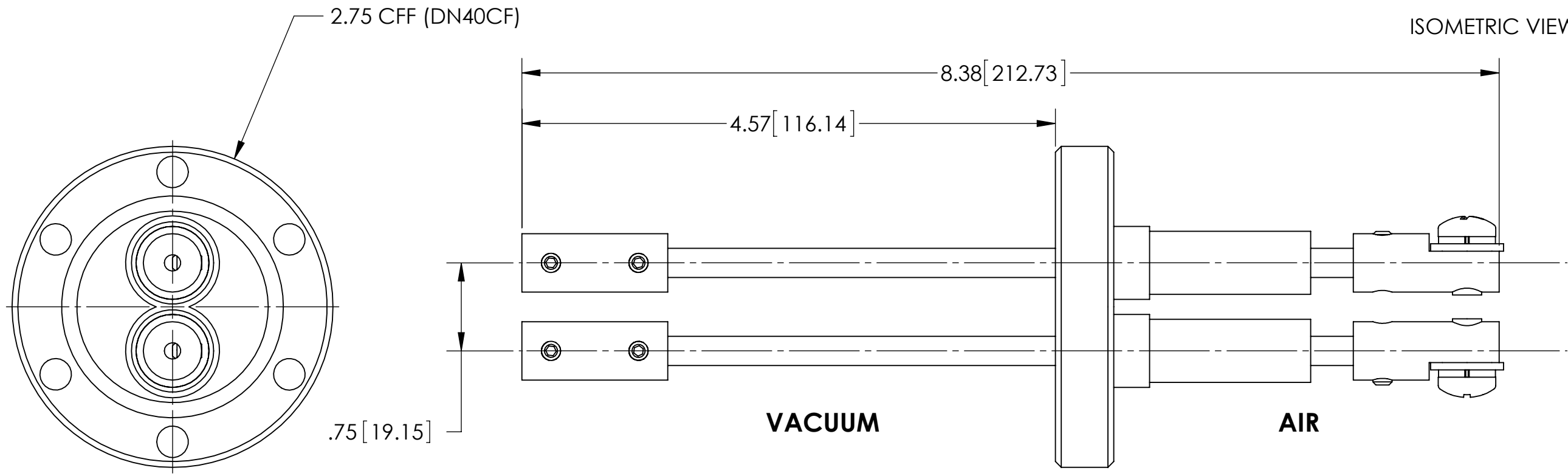
Part Number	DESCRIPTION
275-0001-3	HIGH VOLTAGE FEEDTHRU CFF

UNLESS OTHERWISE SPECIFIED GLOBAL TOLERANCES	DWG BY D. LY DATE 2/27/06 CHECK BY DATE PROJ ENG DATE MFG ENG DATE	MATERIAL: B.O.M. FINISH: THIRD ANGLE PROJECTION	TELEMARK telemark.com
INCHES [mm] .X +/- .03 [0.762] .XX +/- 0.01 [0.254] .XXX +/- 0.005 [0.127] ANGLES +/- .5° SURF FINISH 63 RMS	DO NOT SCALE DRAWING FILE NUMBER - R275-0117 INITIAL PROJECT - E-GUN		HV FEEDTHRU, CFF
CONFIDENTIAL. This document contains proprietary data of TELEMARK and is not to be copied or distributed without the prior written consent of TELEMARK. The receipt or possession of the document does not convey any rights to reproduce it, disclose its contents, or to manufacture, use or sell anything incorporating the concepts and details disclosed by it. Such concepts and details are not to be used other than for the benefit of TELEMARK and are not to be disclosed to others without the prior written consent of an officer of TELEMARK.			B SCALE 1:1 DWG NO. R275-0117 REV A1 SHEET 1 of 1

ECN	ZONE	REV	DESCRIPTION	BY	DATE
		A	RELEASE FOR REFERENCE	D. LY	1/14/2008
		A1	UPDATE	PWF	11/1/2012



ISOMETRIC VIEW



12,000 VOLT, 70 AMP
OFHC COPPER CONDUCTOR
BAKEABLE TO 250°C

INCH [mm]

Part Number	Description
275-0019-1	DUAL HIGH Voltage Feedthru CFF (8 AWG)
275-0019-2	DUAL HIGH Voltage Feedthru CFF (10 AWG)

UNLESS OTHERWISE SPECIFIED	
GLOBAL TOLERANCES	
INCHES	[mm]
.X +/- .03	[0.762]
.XX +/- 0.01	[0.254]
.XXX +/- 0.005	[0.127]
ANGLES +/- .5°	
SURF FINISH 63 RMS	

DWG BY	D. LY	DATE	1/14/08
CHECK BY		DATE	
PROJ ENG		DATE	
MFG ENG		DATE	
DO NOT SCALE DRAWING			
FILE NUMBER	- 275-0019-1		
INITIAL PROJECT	-		

MATERIAL:	B.O.M.
FINISH:	
THIRD ANGLE PROJECTION	

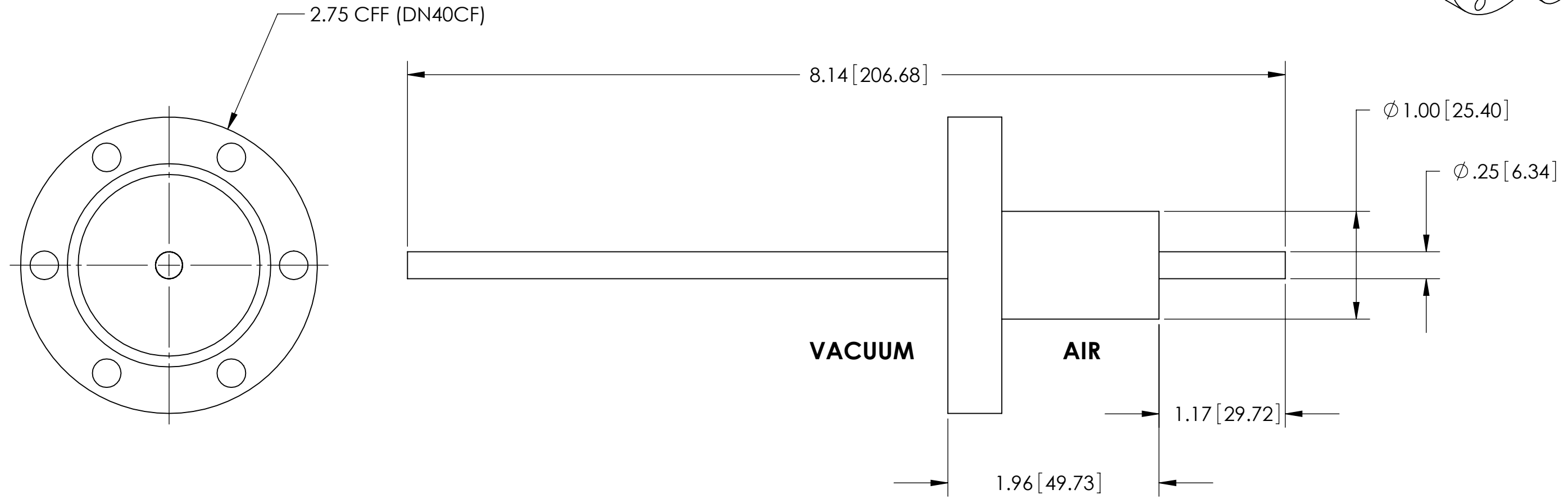
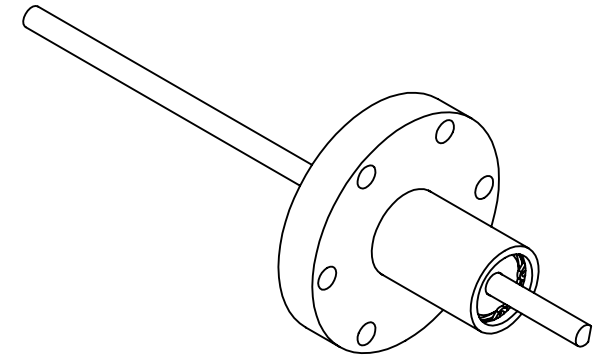
TELEMARK telemark.com

DUAL PASS HIGH VOLTAGE FEEDTHRU

CONFIDENTIAL. This document contains proprietary data of TELEMARK and is not to be copied or distributed without the prior written consent of TELEMARK. The receipt or possession of the document does not convey any rights to reproduce it, disclose its contents, or to manufacture, use or sell anything incorporating the concepts and details disclosed by it. Such concepts and details are not to be used other than for the benefit of TELEMARK and are not to be disclosed to others without the prior written consent of an officer of TELEMARK.


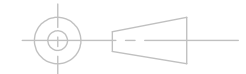
B	SCALE	1:1	DWG NO.	R275-0122	REV	A1
	SHEET	1 of 1				

ECN	ZONE	REV	DESCRIPTION	BY	DATE
		A	RELEASE FOR REFERENCE	PWF	11/1/2012



INCH [mm]

Part Number	Description
275-0002-3	ROTARY 1/4 FEEDTHRU, CFF

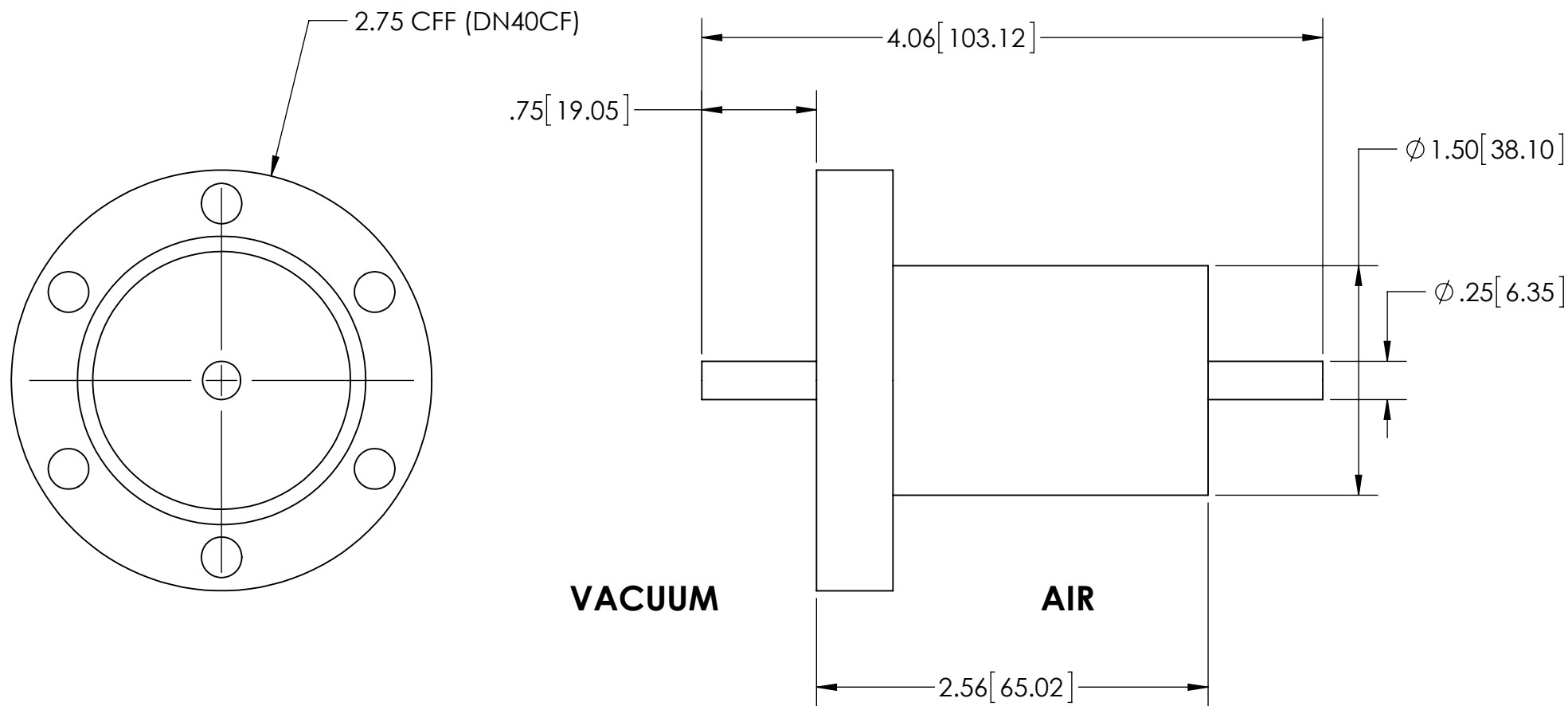
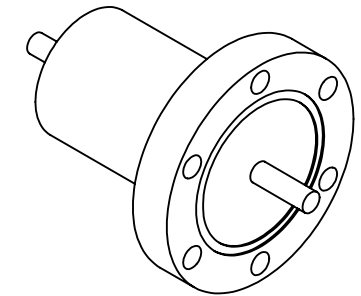
UNLESS OTHERWISE SPECIFIED GLOBAL TOLERANCES	DWG BY CHECK BY PROJ ENG MFG ENG	DATE mo/day/yr DATE DATE DATE	MATERIAL: B.O.M.	 telemark.com ROTARY 1/4 FEEDTHRU. CFF
INCHES [mm] .X +/- .03 [0.762] .XX +/- 0.01 [0.254] .XXX +/- 0.005 [0.127] ANGLES +/- .5° SURF FINISH 63 RMS	DO NOT SCALE DRAWING		FINISH: THIRD ANGLE PROJECTION	
FILE NUMBER - 275-0002-3 INITIAL PROJECT -				

CONFIDENTIAL. This document contains proprietary data of TELEMARK and is not to be copied or distributed without the prior written consent of TELEMARK. The receipt or possession of the document does not convey any rights to reproduce it, disclose its contents, or to manufacture, use or sell anything incorporating the concepts and details disclosed by it. Such concepts and details are not to be used other than for the benefit of TELEMARK and are not to be disclosed to others without the prior written consent of an officer of TELEMARK.

B	SCALE 1:1	DWG NO.	REV
	SHEET 1 of 1	R275-0124	A

A B C D E F G H

ECN	ZONE	REV	DESCRIPTION	BY	DATE
		A	RELEASE	PWF	11/2/2012



INCH [mm]

Part Number	Description
275-0012-3	FEEDTHRU, ROTARY, MAGNETIC FLUID SEAL, CFF

UNLESS OTHERWISE SPECIFIED GLOBAL TOLERANCES	
INCHES	[mm]
.X +/- .03	[0.762]
.XX +/- 0.01	[0.254]
.XXX +/- 0.005	[0.127]
ANGLES +/- .5°	
SURF FINISH 63 RMS	

DWG BY	DATE
CHECK BY	DATE
PROJ ENG	DATE
MFG ENG	DATE
DO NOT SCALE DRAWING	
FILE NUMBER	- R275-0125
INITIAL PROJECT	-

MATERIAL:
FINISH:
THIRD ANGLE PROJECTION

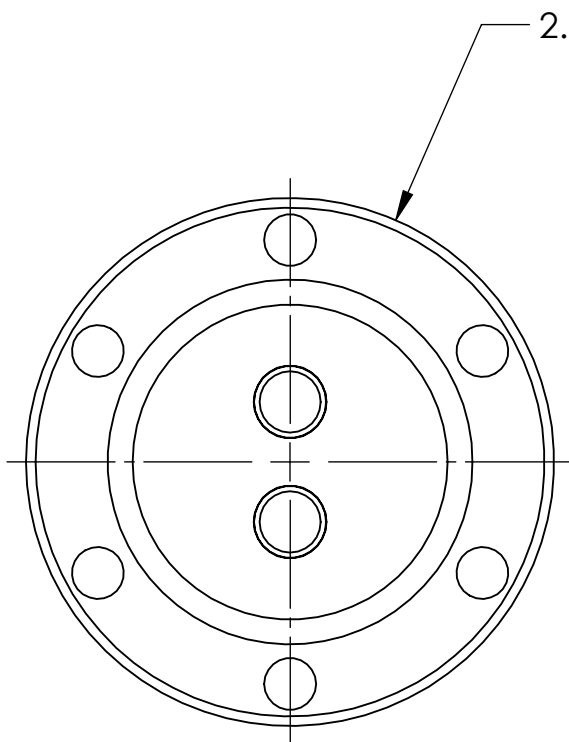
TELEMARK telemark.com

**FEEDTHRU, ROTARY,
MAGNETIC FLUID SEAL, CFF**

CONFIDENTIAL. This document contains proprietary data of TELEMARK and is not to be copied or distributed without the prior written consent of TELEMARK. The receipt or possession of the document does not convey any rights to reproduce it, disclose its contents, or to manufacture, use or sell anything incorporating the concepts and details disclosed by it. Such concepts and details are not to be used other than for the benefit of TELEMARK and are not to be disclosed to others without the prior written consent of an officer of TELEMARK.

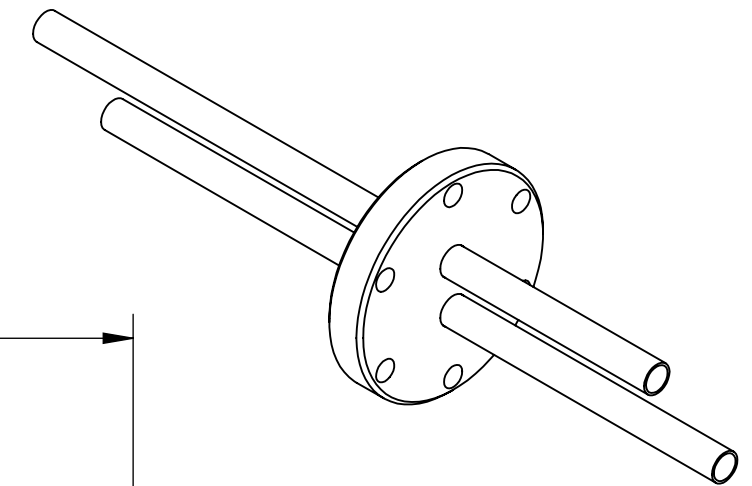
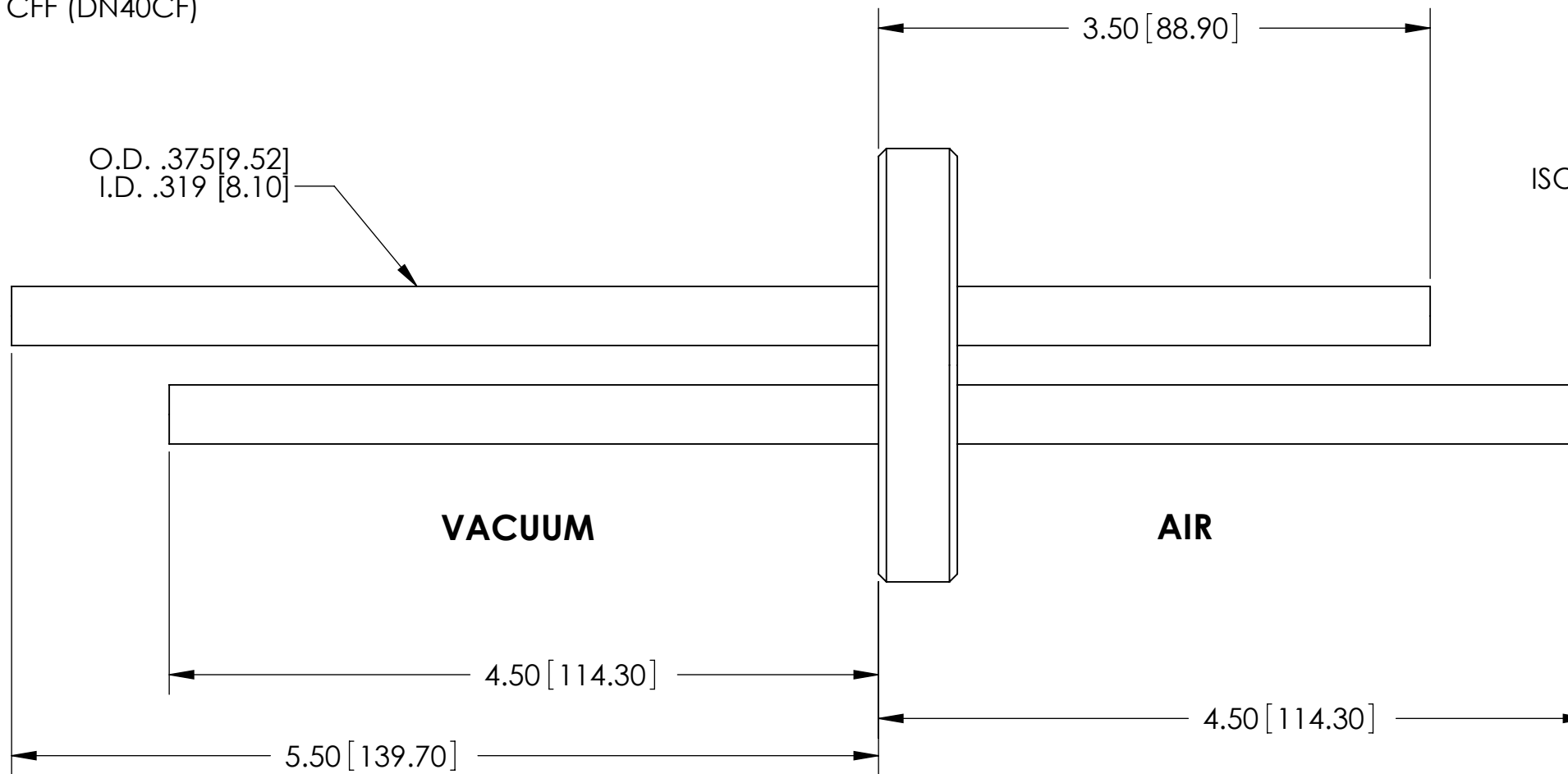
B	SCALE	1:1	DWG NO.	R275-0125	REV	A
	SHEET	1 of 1				

ECN	ZONE	REV	DESCRIPTION	BY	DATE
		A	RELEASE FOR REFERENCE	D.LY	2/22/2006
		A1	UPDATE	PWF	11/1/2012



2.75 CFF (DN40CF)

O.D. .375 [9.52]
I.D. .319 [8.10]



ISOMETRIC VIEW

Part Number	DESCRIPTION
275-0003-4	DUAL WATER 3/8" FEEDTHRU CFF

INCH [mm]

UNLESS OTHERWISE SPECIFIED	
GLOBAL TOLERANCES	
INCHES	[mm]
.X +/- .03	[0.762]
.XX +/- 0.01	[0.254]
.XXX +/- 0.005	[0.127]
ANGLES +/- .5°	
SURF FINISH 63 RMS	

DWG BY	D. LY	DATE	2/22/06
CHECK BY		DATE	
PROJ ENG		DATE	
MFG ENG		DATE	
DO NOT SCALE DRAWING			
FILE NUMBER	- R275-0114		
INITIAL PROJECT	-		

MATERIAL:	B.O.M.
FINISH:	
THIRD ANGLE PROJECTION	

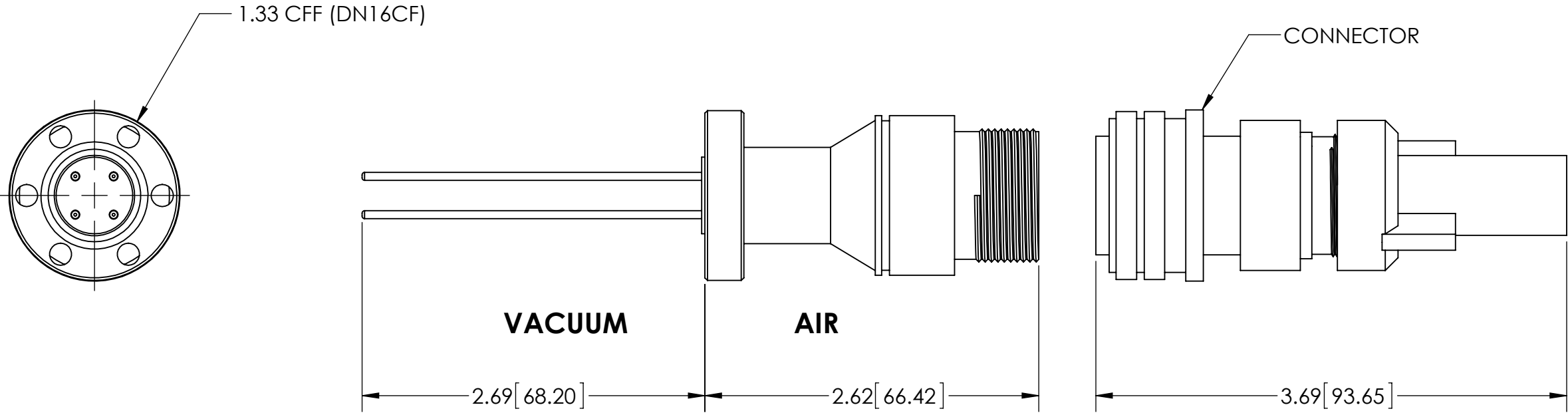
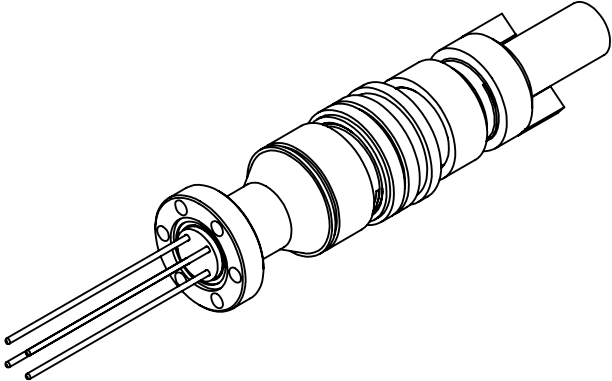
TELEMARK telemark.com

**DUAL WATER 3/8"
FEEDTHRU CFF**

CONFIDENTIAL. This document contains proprietary data of TELEMARK and is not to be copied or distributed without the prior written consent of TELEMARK. The receipt or possession of the document does not convey any rights to reproduce it, disclose its contents, or to manufacture, use or sell anything incorporating the concepts and details disclosed by it. Such concepts and details are not to be used other than for the benefit of TELEMARK and are not to be disclosed to others without the prior written consent of an officer of TELEMARK.

B	SCALE	1:1	DWG NO.	R275-0114	REV	A1
	SHEET	1 of 1				

ECN	ZONE	REV	DESCRIPTION	BY	DATE
		A	RELEASE	PWF	11/14/2012



INCH [mm]

Part Number	Description
275-0014-1	4 PIN INSTRUMENT FEEDTHRU, CFF

UNLESS OTHERWISE SPECIFIED GLOBAL TOLERANCES	
INCHES	[mm]
.X +/- .03	[0.762]
.XX +/- 0.01	[0.254]
.XXX +/- 0.005	[0.127]
ANGLES +/- .5°	
SURF FINISH 63 RMS	

DWG BY	DATE
CHECK BY	DATE
PROJ ENG	DATE
MFG ENG	DATE
DO NOT SCALE DRAWING	
FILE NUMBER - R275-0127	
INITIAL PROJECT -	

MATERIAL:
FINISH:
THIRD ANGLE PROJECTION

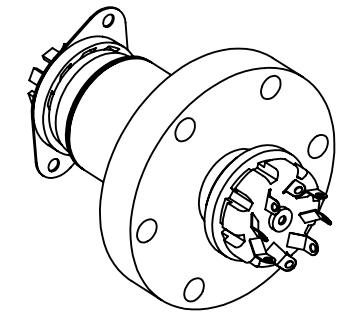
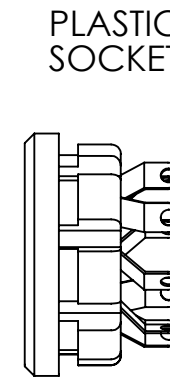
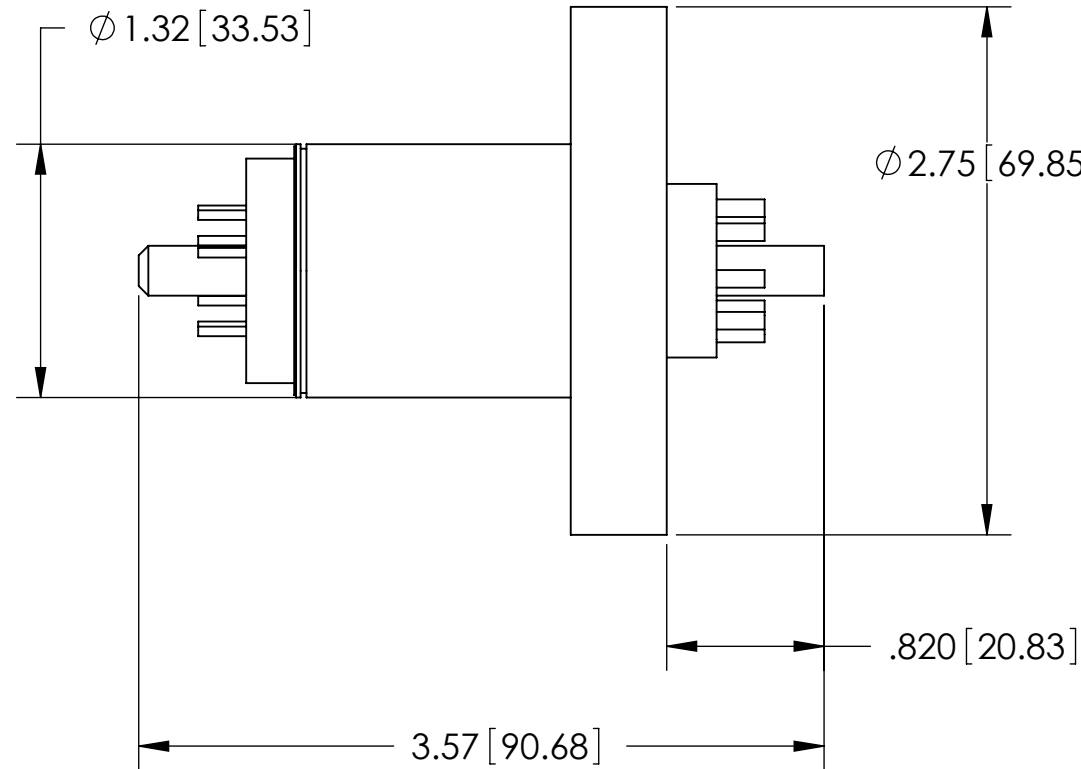
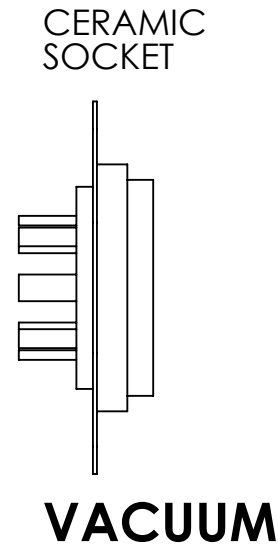
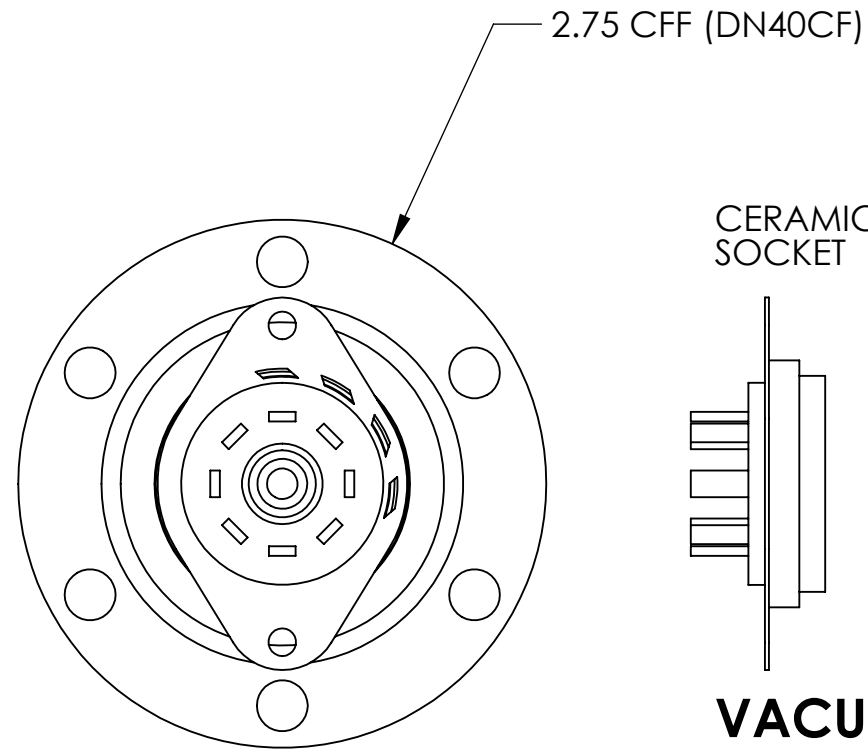
TELEMARK telemark.com

4 PIN INSTRUMENT FEEDTHRU, CFF

CONFIDENTIAL. This document contains proprietary data of TELEMARK and is not to be copied or distributed without the prior written consent of TELEMARK. The receipt or possession of the document does not convey any rights to reproduce it, disclose its contents, or to manufacture, use or sell anything incorporating the concepts and details disclosed by it. Such concepts and details are not to be used other than for the benefit of TELEMARK and are not to be disclosed to others without the prior written consent of an officer of TELEMARK.

B	SCALE 1:1	DWG NO. R275-0127	REV A
	SHEET 1 of 1		

ECN	ZONE	REV	DESCRIPTION	BY	DATE
		A	RELEASE FOR REFERENCE	D.LY	2/22/2006
		A1	UPDATE	PWF	11/1/2012



ISOMETRIC VIEW

INCH [mm]

250 VOLTS, 10 AMP
BAKEABLE TO 200 °C

Part Number	DESCRIPTION
275-0008-3	OCTAL FEEDTHRU CFF

UNLESS OTHERWISE SPECIFIED GLOBAL TOLERANCES	
INCHES	[mm]
.X +/- .03	[0.762]
.XX +/- 0.01	[0.254]
.XXX +/- 0.005	[0.127]
ANGLES	+/- .5°
SURF FINISH	63 RMS

DWG BY **D. LY** DATE **2/22/06**
 CHECK BY DATE
 PROJ ENG DATE
 MFG ENG DATE

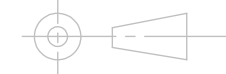
MATERIAL:

FINISH:

DO NOT SCALE DRAWING

THIRD ANGLE PROJECTION

FILE NUMBER -
INITIAL PROJECT -



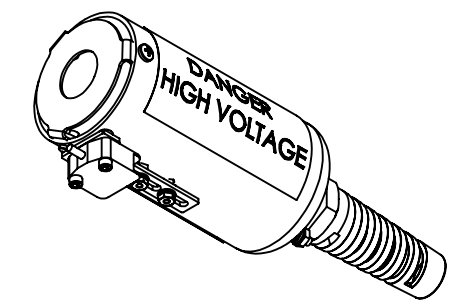
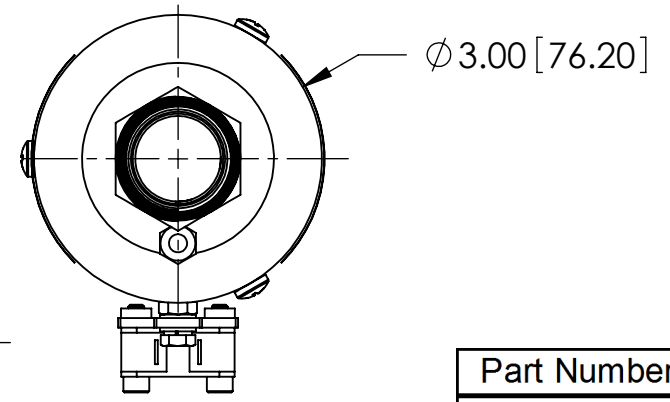
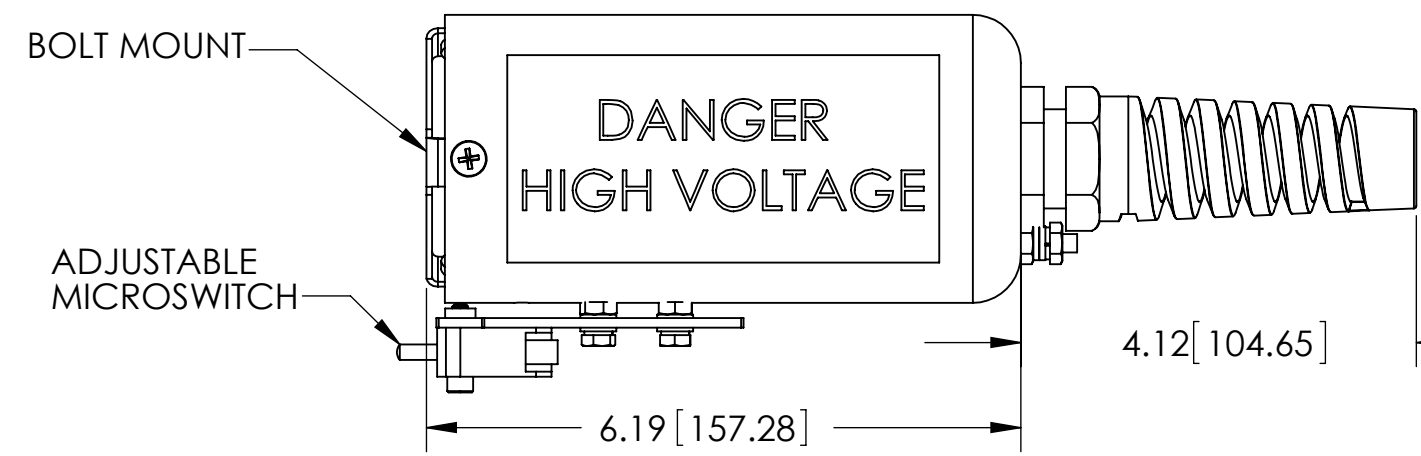
TELEMARK telemark.com

**8 PIN INSTRUMENT
F/T, OCTAL CFF**

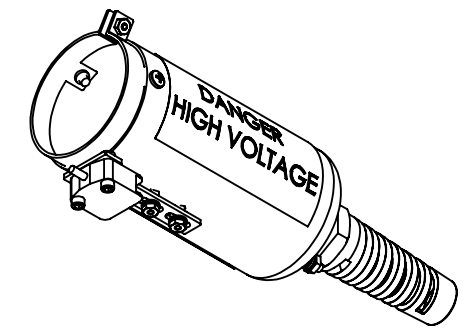
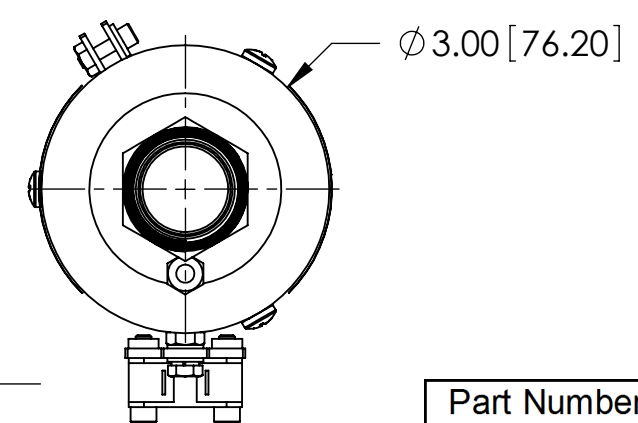
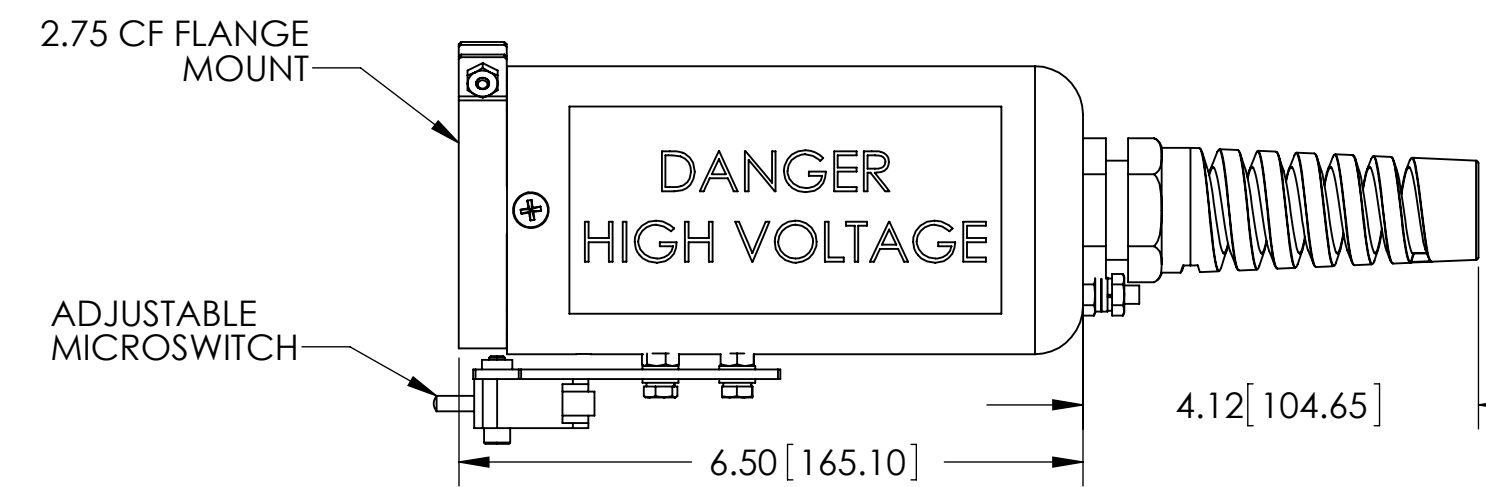
CONFIDENTIAL. This document contains proprietary data of TELEMARK and is not to be copied or distributed without the prior written consent of TELEMARK. The receipt or possession of the document does not convey any rights to reproduce it, disclose its contents, or to manufacture, use or sell anything incorporating the concepts and details disclosed by it. Such concepts and details are not to be used other than for the benefit of TELEMARK and are not to be disclosed to others without the prior written consent of an officer of TELEMARK.

B	SCALE	1:1	DWG NO.	R275-0115	REV	A1
	SHEET	1 of 1				

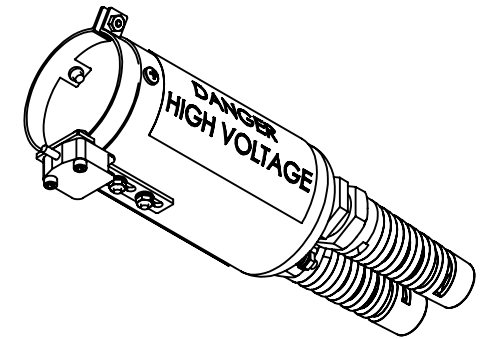
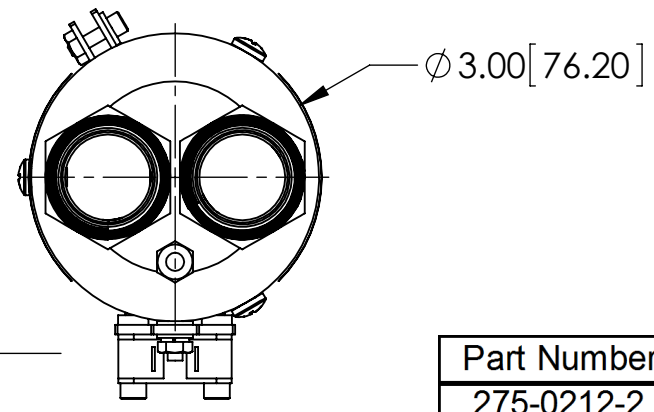
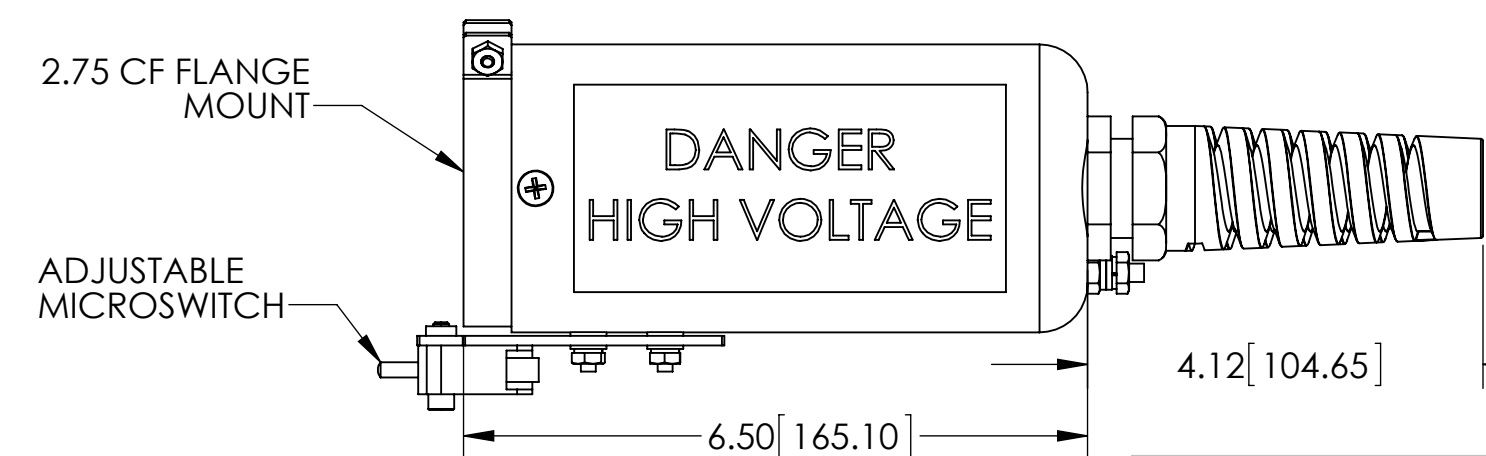
ECN	ZONE	REV	DESCRIPTION	BY	DATE
		A	RELEASE FOR REFERENCE	D. LY	2/22/2006
		B	UPDATED	PWF	11/1/2012



Part Number	Description
275-0210-3	HV COVER ASSEMBLY, 1"
275-0210-4	HV COVER ASSEMBLY, 1.25"



Part Number	Description
275-0211-2	HV COVER ASSEMBLY, CFF



Part Number	Description
275-0212-2	HV COVER ASSEMBLY, CFF, 2 PASS

INCH [mm]

UNLESS OTHERWISE SPECIFIED	
GLOBAL TOLERANCES	
INCHES	[mm]
.X +/- .03	[0.762]
.XX +/- 0.01	[0.254]
.XXX +/- 0.005	[0.127]
ANGLES +/- .5°	
SURF FINISH 63 RMS	

DWG BY	D. LY	DATE	2/22/06
CHECK BY		DATE	
PROJ ENG		DATE	
MFG ENG		DATE	
DO NOT SCALE DRAWING			
FILE NUMBER	- R275-0113		
INITIAL PROJECT	- E-GUN		

MATERIAL:	B.O.M.
FINISH:	
THIRD ANGLE PROJECTION	

TELEMARK telemark.com

HV FEEDTHRU COVERS

CONFIDENTIAL. This document contains proprietary data of TELEMARK and is not to be copied or distributed without the prior written consent of TELEMARK. The receipt or possession of the document does not convey any rights to reproduce it, disclose its contents, or to manufacture, use or sell anything incorporating the concepts and details disclosed by it. Such concepts and details are not to be used other than for the benefit of TELEMARK and are not to be disclosed to others without the prior written consent of an officer of TELEMARK.

B	SCALE	1:2	DWG NO.	R275-0113	REV	B
	SHEET	1 of 1				