

TELEMARK 224 Multi Pocket E-Beam Source Drawings

The current version of this drawing pdf can be found at

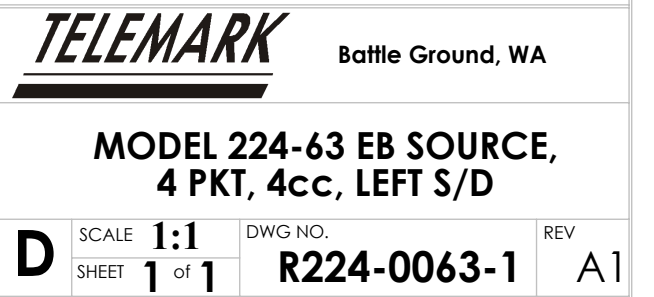
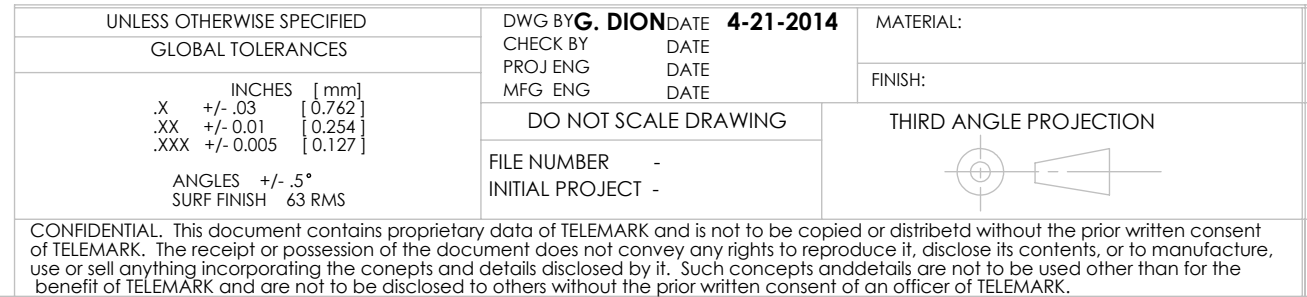
<https://telemark.com/electron-beam-sources/r-and-d-multi-pocket-sources/>

Drawing	Rev.	Description	Page
Reference Dimensions			2
R224-0063-1	A1	Model 224-63 EB Source, 4 pkt, 4cc, Left S/D	3
R224-0063-3	A1	Model 224-63 EB Source, 4 pkt, 4cc, Right S/D	4
R224-0063-5	A1	Model 224-63 EB Source, 4 pkt, 4cc, Left S/D, Side Mount on 6" CFF	5
R224-0064-1	A1	Model 224-64 EB Source, 4 pkt, 4cc, B/D	6
Model Assemblies			7
224-9963-1	A1	Model 224-63 EB Source, 4 pkt, 4cc, Left S/D	8
224-9963-3	A1	Model 224-63 EB Source, 4 pkt, 4cc, Right S/D	9
224-9963-5	A1	Model 224-63 EB Source, 4 pkt, 4cc, Left S/D, Side Mount on 6" CFF	10
224-9964-1	A1	Model 224-64 EB Source, 4 pkt, 4cc, B/D	12
Common Assemblies			13
221-0125-2	A	Assembly, Side Drive, 3/16" Shaft	14
221-0127-1	A	Assembly, Bottom Drive, 3/16" Shaft	16
223-0150-1	B	Emitter Assembly	18



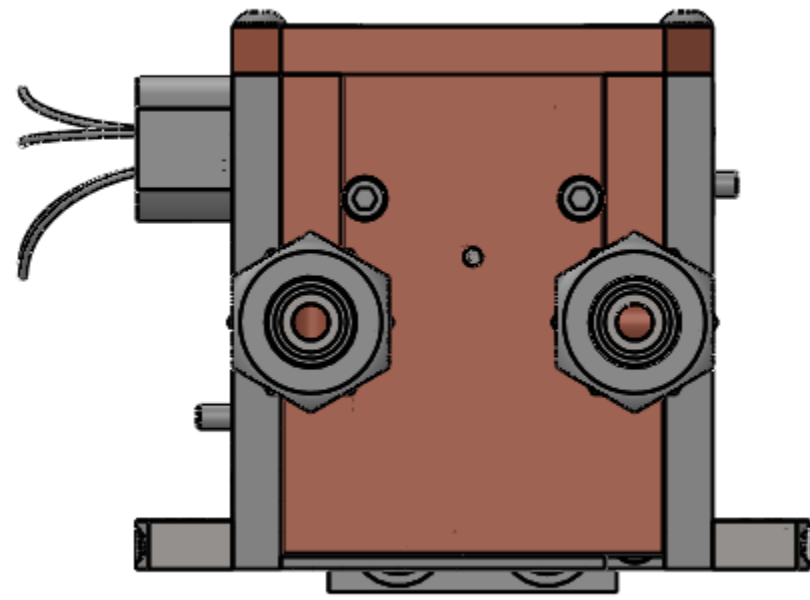
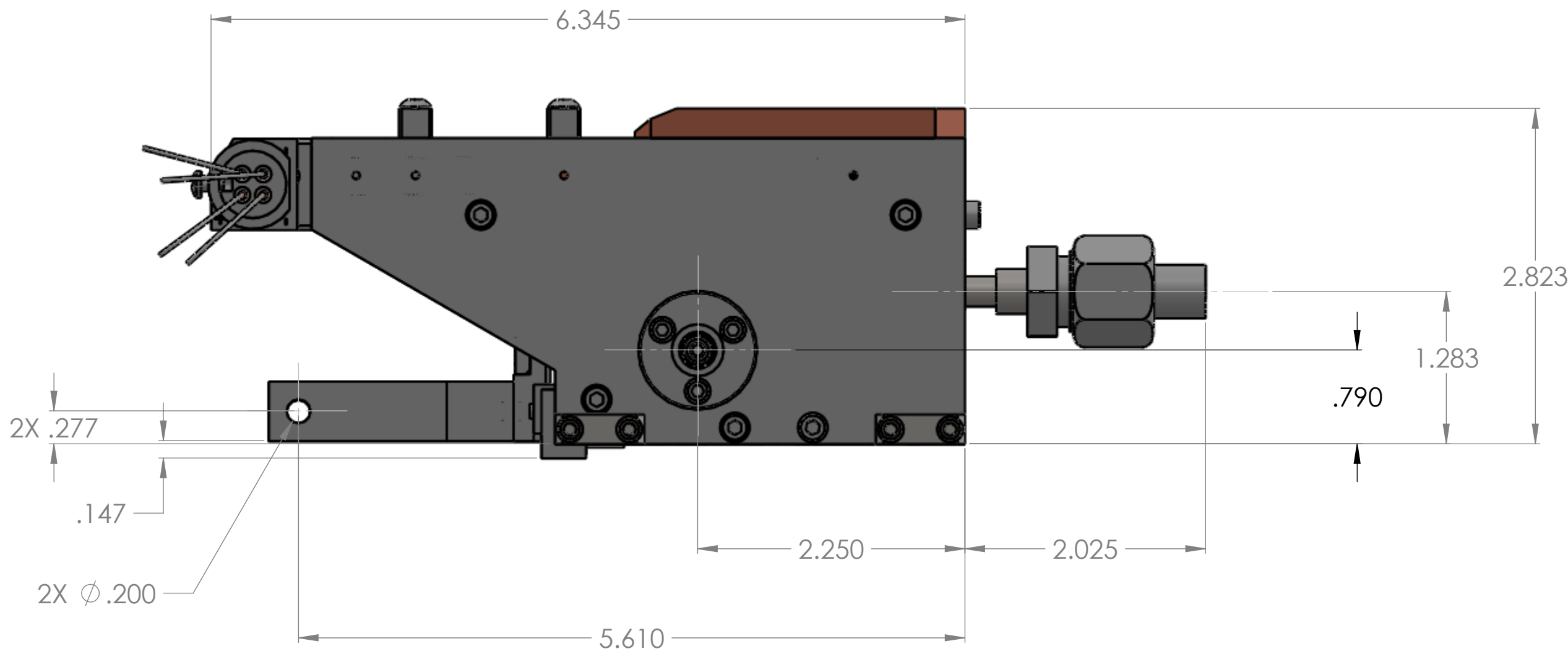
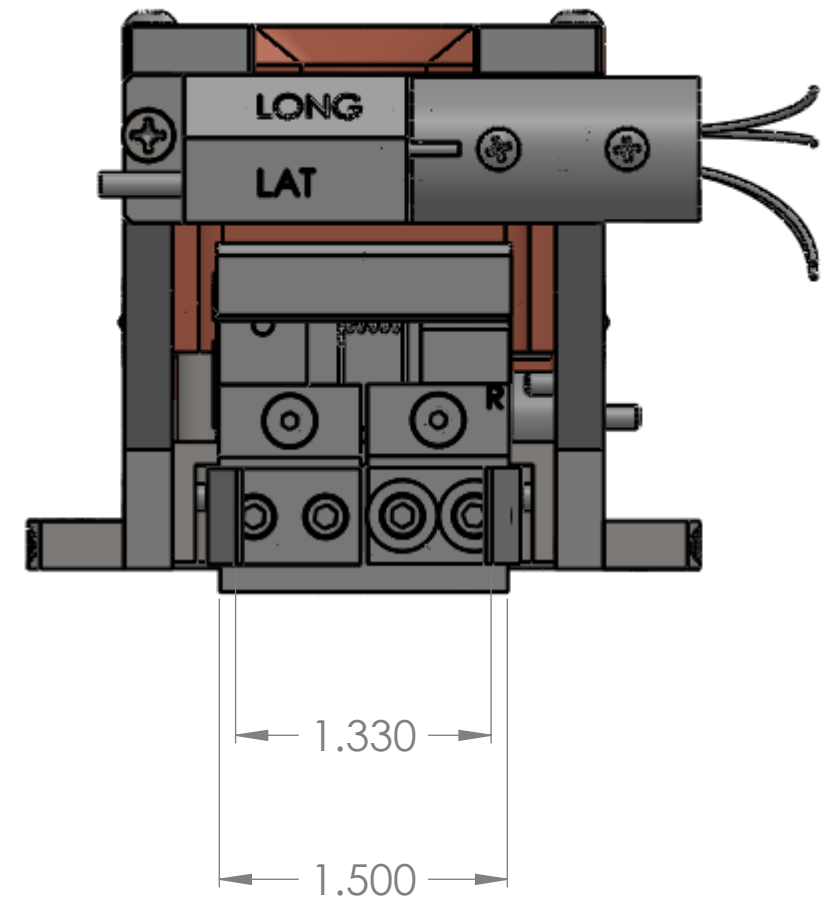
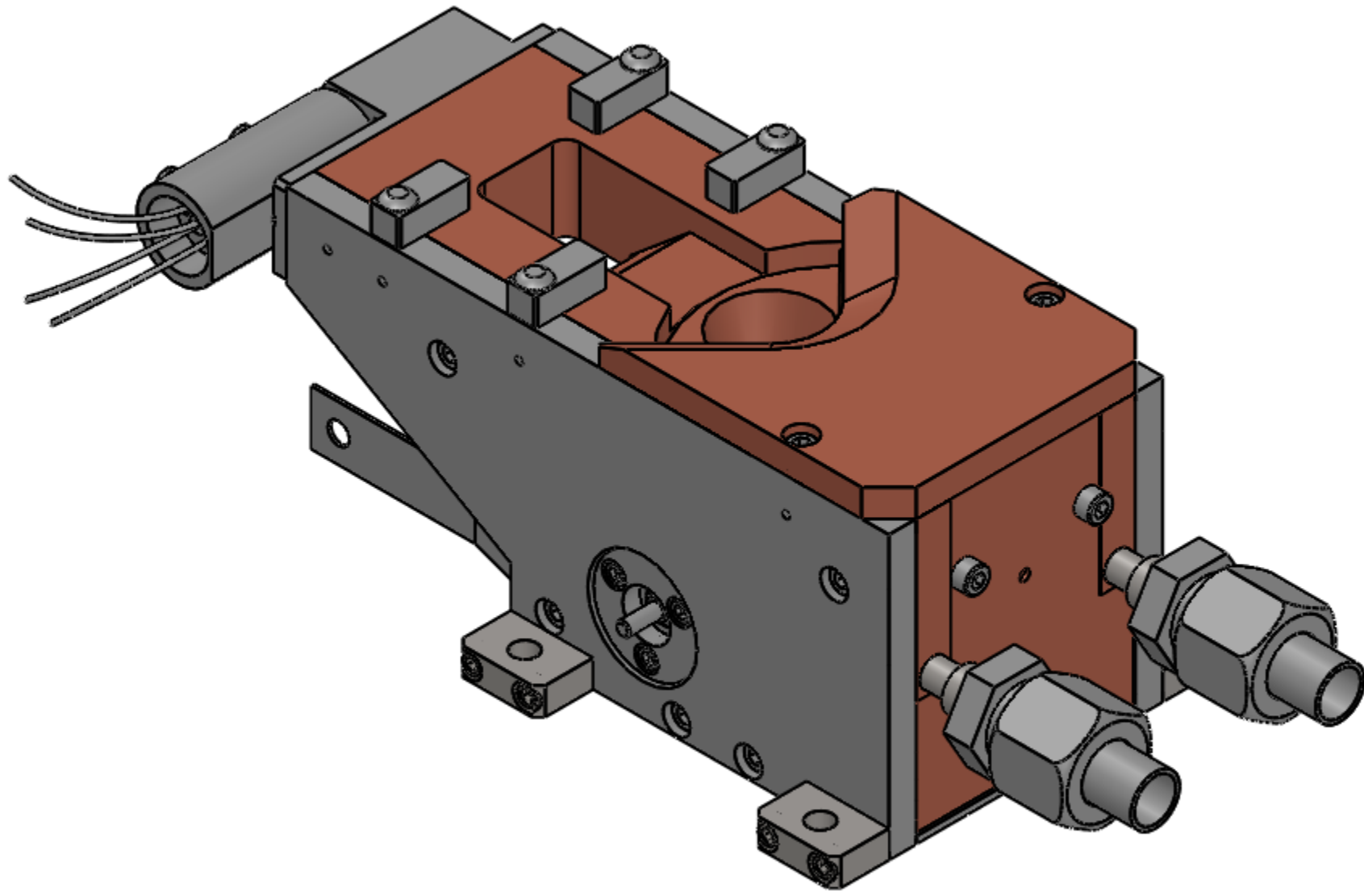
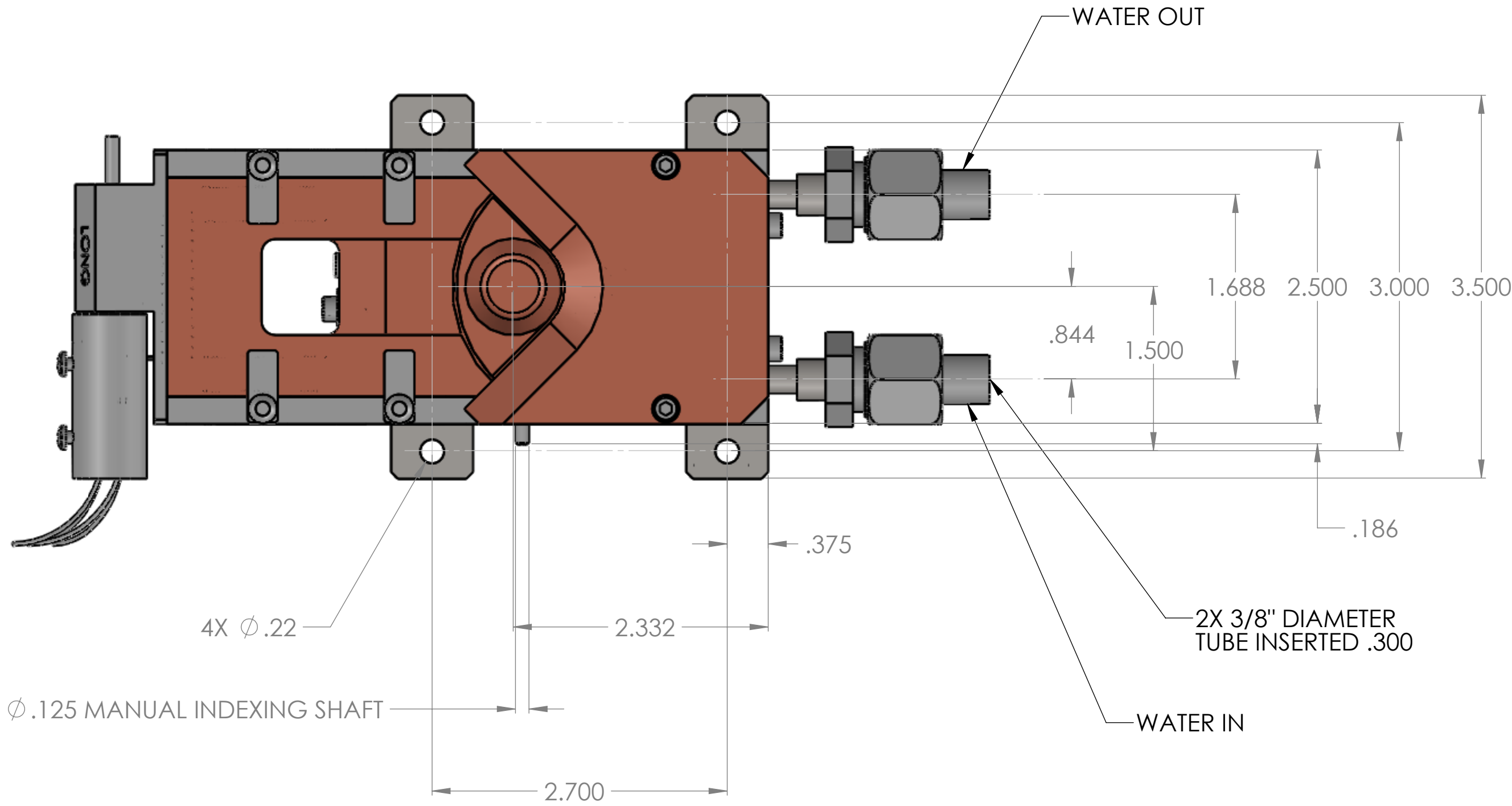
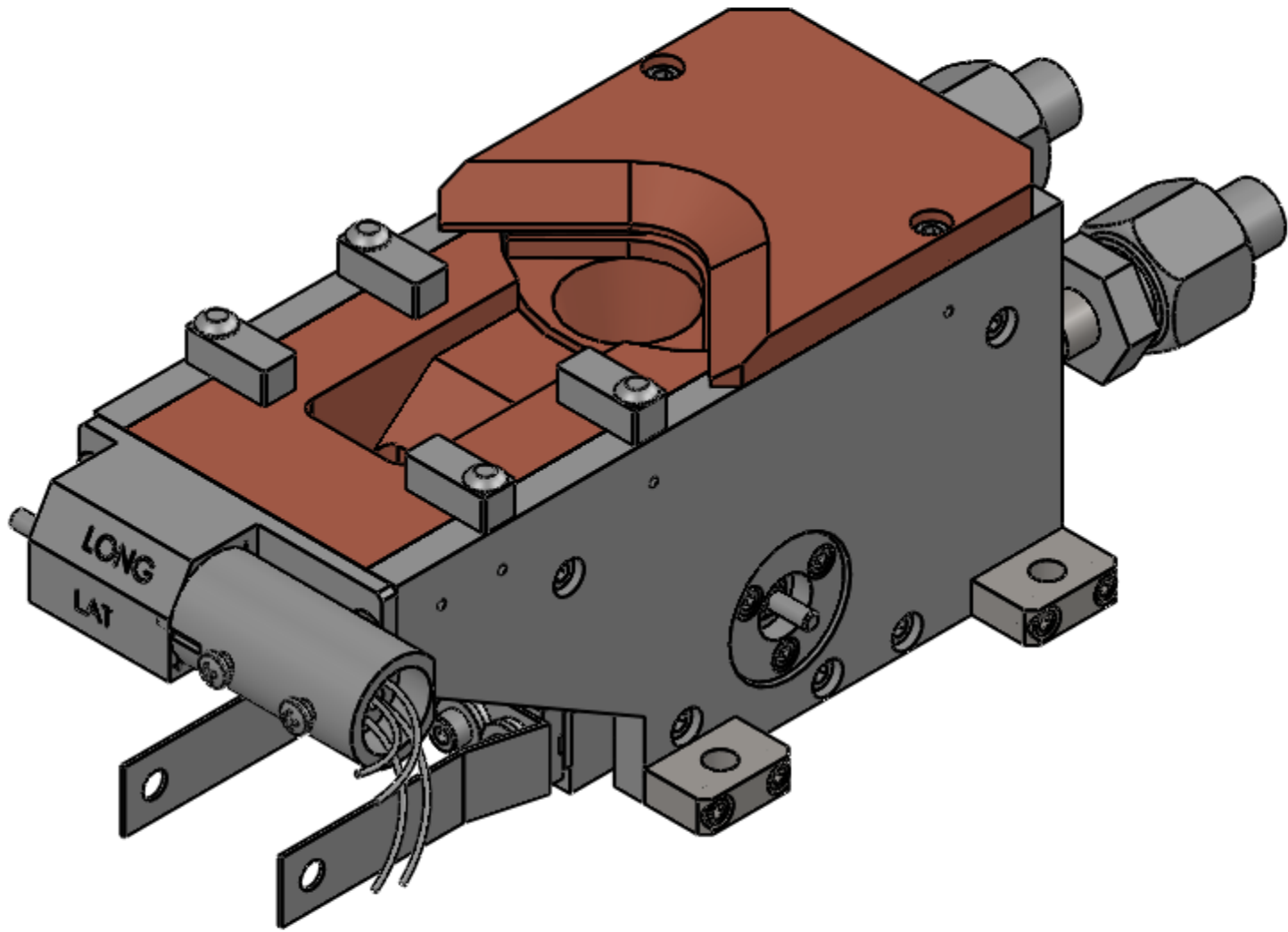
Reference Dimensions

E-Beam Source



ECN	ZONE	REV	DESCRIPTION	BY	DATE
		A	RELEASE	GPD	4/21/2014
		A1	REVISED DESCRIPTION & P/N	GPD	10/30/2014

1
2
3
4
5



G		H		I	
ECN	ZONE	REV	DESCRIPTION	BY	DATE
		A	RELEASE	GPD	4/21/2014
		A1	REVISED DESCRIPTION & P/N	GPD	10/30/2014

UNLESS OTHERWISE SPECIFIED GLOBAL TOLERANCES		DWG BY: G. DION DATE: 4-21-2014	MATERIAL:		TELEMARK Battle Ground, WA	
		CHECK BY: DATE: 4-21-2014	FINISH:			
INCHES [mm]		PROJ ENG DATE	THIRD ANGLE PROJECTION		MODEL 224-63 EB SOURCE, 4 PKT, 4cc, RIGHT S/D	
.X +/- .03 [0.762]		MFG ENG DATE	DO NOT SCALE DRAWING			
.XX +/- .001 [0.0254]		FILE NUMBER -	INITIAL PROJECT -		D SCALE 1:1 DWG NO. R224-0063-3 REV A	
.XXX +/- .0005 [0.127]		DO NOT SCALE DRAWING	THIRD ANGLE PROJECTION			
ANGLES +/- .5°		FILE NUMBER -	INITIAL PROJECT -		D SCALE 1:1 DWG NO. R224-0063-3 REV A	
SURF FINISH 63 RMS		FILE NUMBER -	INITIAL PROJECT -			
CONFIDENTIAL: This document contains proprietary data of TELEMARK and is not to be copied or distributed without the prior written consent of TELEMARK. This receipt or possession of this document does not convey any rights to reproduce it, disclose its contents, or to manufacture, use or sell anything incorporating the concepts and details disclosed by it. Such concepts and details are not to be used other than for the benefit of TELEMARK and are not to be disclosed to others without the prior written consent of an officer of TELEMARK.						

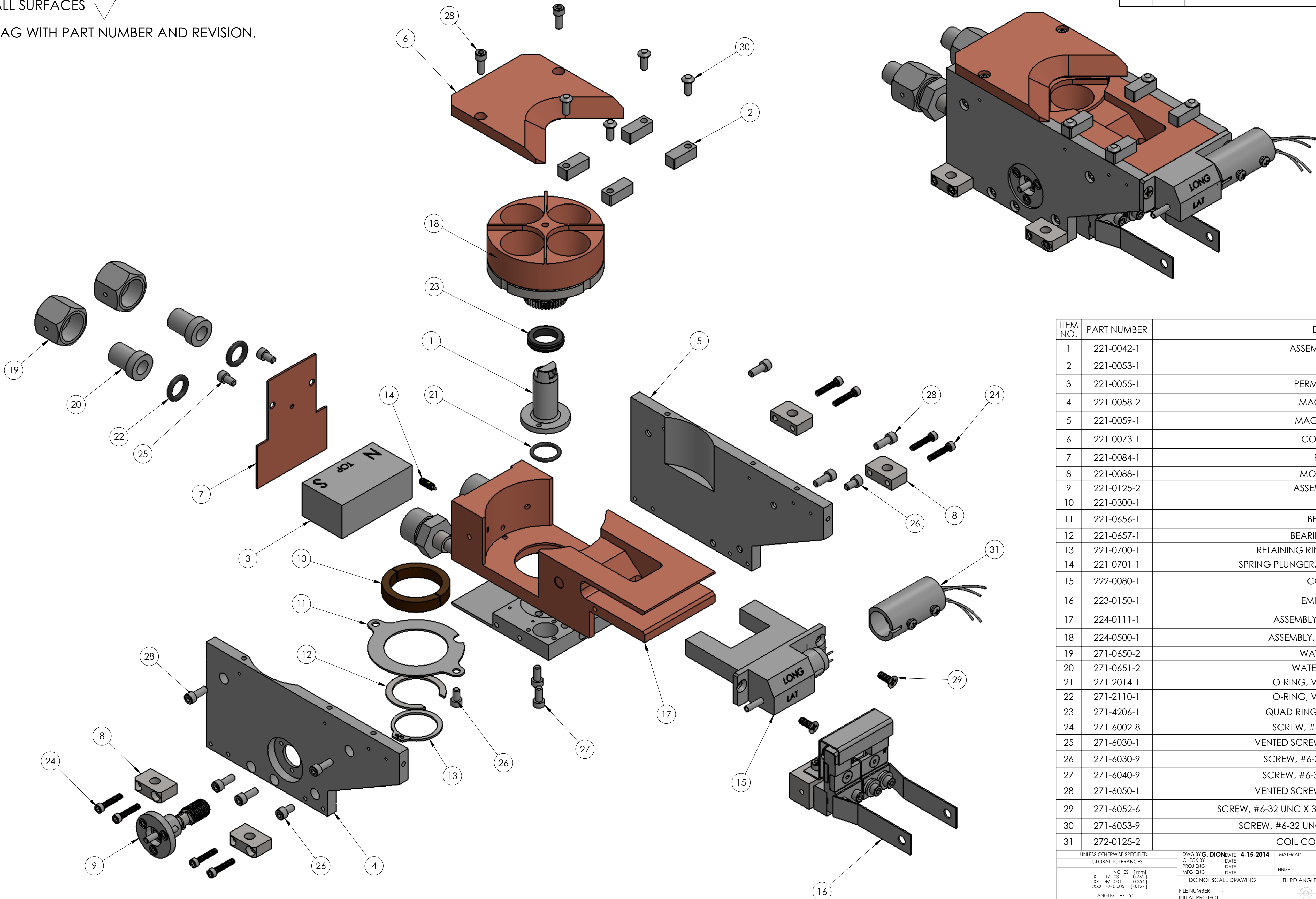


Model Assemblies

E-Beam Sources

- NOTES: (UNLESS OTHERWISE SPECIFIED)
1. REMOVE BURRS & BREAK ALL SHARP EDGES
.005-.015 RADIUS OR CHAMFER.
 2. ALL SURFACES 63
 3. BAG WITH PART NUMBER AND REVISION.

ECN	ZONE	REV	DESCRIPTION	BY	DATE
		A	RELEASE	GPD	4/15/2014
		A1	REVISED DESCRIPTION & P/N	GPD	10/30/2014



ITEM NO.	PART NUMBER	DESCRIPTION	QTY.
1	221-0042-1	ASSEMBLY, PIVOT SHAFT	1
2	221-0053-1	POLE PIECE	4
3	221-0055-1	PERMANENT MAGNET	1
4	221-0058-2	MAGNET ARM, LEFT	1
5	221-0059-1	MAGNET ARM, RIGHT	1
6	221-0073-1	COVER, 4 POCKET	1
7	221-0084-1	REAR SHIELD	1
8	221-0088-1	MOUNTING BLOCK	4
9	221-0125-2	ASSEMBLY, SIDE DRIVE	1
10	221-0300-1	BEARING	1
11	221-0656-1	BEARING STRAP	1
12	221-0657-1	BEARING CLAMP PLATE	1
13	221-0700-1	RETAINING RING, EXTERNAL, 15/16", SST	1
14	221-0701-1	SPRING PLUNGER, LONG NOSE, #6-32 UNC, SST	1
15	222-0080-1	COIL ASSEMBLY	1
16	223-0150-1	EMITTER ASSEMBLY	1
17	224-0111-1	ASSEMBLY, WELD, MAIN BLOCK	1
18	224-0500-1	ASSEMBLY, WELD, CRUCIBLE BASE	1
19	271-0650-2	WATER FITTING NUT	2
20	271-0651-2	WATER FITTING GLAND	2
21	271-2014-1	O-RING, VITON, ID 1/2", W 1/16"	1
22	271-2110-1	O-RING, VITON, ID 3/8", W 3/32"	2
23	271-4206-1	QUAD RING, VITON, ID 1/2", W 1/8"	1
24	271-6002-8	SCREW, #4-40 X 9/16" SST, SHCS	8
25	271-6030-1	VENTED SCREW, #6-32 UNC X 1/4" SHCS	2
26	271-6030-9	SCREW, #6-32 UNC X 1/4" SST, SHCS	4
27	271-6040-9	SCREW, #6-32 UNC X 5/16 SST, SHCS	2
28	271-6050-1	VENTED SCREW, #6-32 UNC X 3/8" SHCS	9
29	271-6052-6	SCREW, #6-32 UNC X 3/8" SST, PHILLIPS FLAT HEAD, SILVER	2
30	271-6053-9	SCREW, #6-32 UNC X 3/8 SST, BUTTON HEAD CS	4
31	272-0125-2	COIL CONNECTOR ASSEMBLY	1

UNLESS OTHERWISE SPECIFIED
GLOBAL TOLERANCES

	INCHES	[mm]
.X	+/- .03	[0.762]
.XX	+/- .001	[0.254]
.XXX	+/- .0005	[0.127]

ANGLES +/- .5°
SURF FINISH 63 RMS

DWG BY: **G. DION** DATE: **4-15-2014**

CHECK BY: DATE:
PROJ ENG DATE:
MFG ENG DATE:
DO NOT SCALE DRAWING

FILE NUMBER:
INITIAL PROJECT: -

MATERIAL:
FINISH:
THIRD ANGLE PROJECTION

SEE PARTS LIST

SEE NOTES

TELEMARK Battle Ground, WA

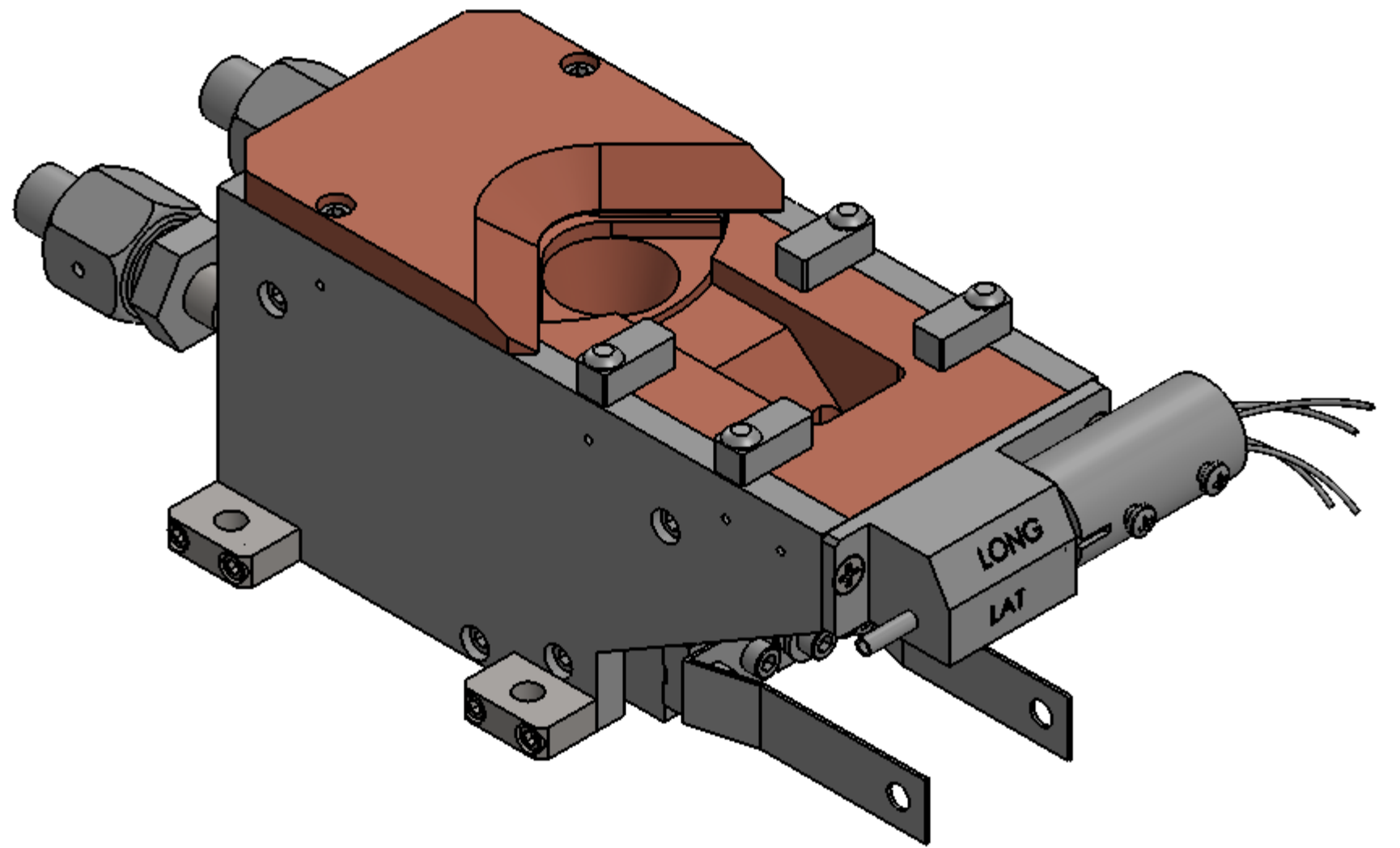
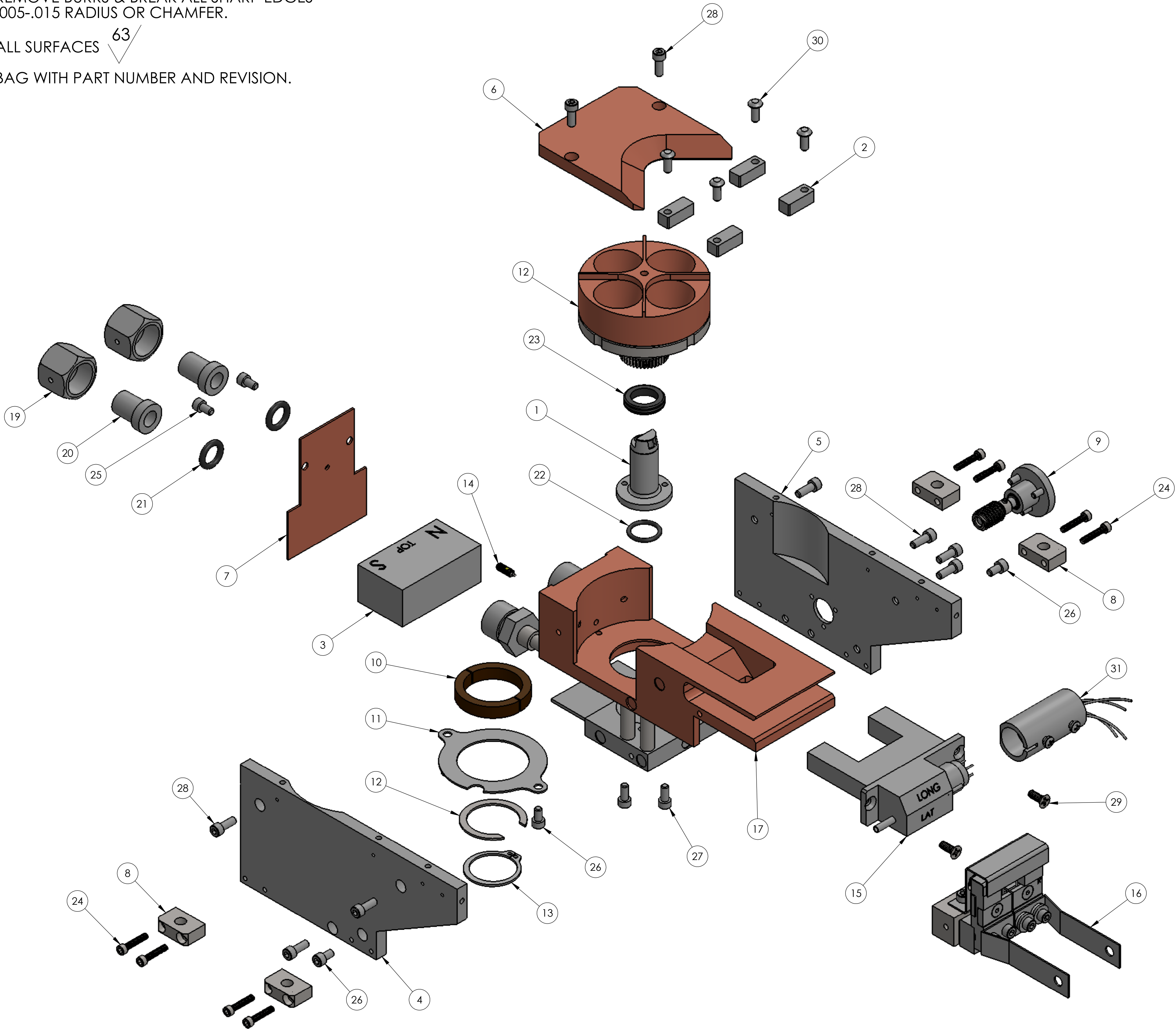
**MODEL 224-63 EB SOURCE,
4 PKT, 4cc, LEFT S/D**

SCALE **1:1** DWG NO. **224-9963-1** REV **A1**

SHEET **1** of **1**

CONFIDENTIAL: This document contains proprietary data of TELEMARK and is not to be copied or distributed without the prior written consent of TELEMARK. This receipt or possession of this document does not convey any rights to reproduce it, disclose its contents, or to manufacture, use or sell anything incorporating the concepts and details disclosed by it. Such concepts and details are not to be used other than for the benefit of TELEMARK and are not to be disclosed to others without the prior written consent of an officer of TELEMARK.

- NOTES: (UNLESS OTHERWISE SPECIFIED)
1. REMOVE BURRS & BREAK ALL SHARP EDGES
.005-.015 RADIUS OR CHAMFER.
 2. ALL SURFACES $\sqrt{63}$
 3. BAG WITH PART NUMBER AND REVISION.



ITEM NO.	PART NUMBER	DESCRIPTION	QTY.
1	221-0042-4	ASSEMBLY, PIVOT SHAFT	1
2	221-0053-1	POLE PIECE	4
3	221-0055-1	PERMANENT MAGNET	1
4	221-0058-3	MAGNET ARM, LEFT	1
5	221-0059-2	MAGNET ARM, RIGHT	1
6	221-0073-1	COVER, 4 POCKET	1
7	221-0084-1	REAR SHIELD	1
8	221-0088-1	MOUNTING BLOCK	4
9	221-0125-2	ASSEMBLY, SIDE DRIVE	1
10	221-0300-1	BEARING	1
11	221-0656-1	BEARING STRAP	1
12	221-0657-1	BEARING CLAMP PLATE	1
13	221-0700-1	RETAINING RING, EXTERNAL, 15/16", SST	1
14	221-0701-1	SPRING PLUNGER, LONG NOSE, #6-32 UNC, SST	1
15	222-0080-1	COIL ASSEMBLY	1
16	223-0150-1	EMITTER ASSEMBLY	1
17	224-0111-2	ASSEMBLY, WELD, MAIN BLOCK	1
18	224-0500-1	ASSEMBLY, WELD, CRUCIBLE BASE	1
19	271-0650-2	WATER FITTING NUT	2
20	271-0651-2	WATER FITTING GLAND	2
21	271-2110-1	O-RING, VITON, ID 3/8", W 3/32"	2
22	271-2014-1	O-RING, VITON, ID 1/2", W 1/16"	1
23	271-4206-1	QUAD RING, VITON, ID 1/2", W 1/8"	1
24	271-6002-8	SCREW, #4-40 X 9/16" SST, SHCS	8
25	271-6030-1	VENTED SCREW, #6-32 UNC X 1/4" SHCS	2
26	271-6030-9	SCREW, #6-32 UNC X 1/4" SST, SHCS	4
27	271-6040-9	SCREW, #6-32 UNC X 5/16 SST, SHCS	2
28	271-6050-1	VENTED SCREW, #6-32 UNC X 3/8" SHCS	9
29	271-6052-6	SCREW, #6-32 UNC X 3/8" SST, PHILLIPS FLAT HEAD, SILVER	2
30	271-6053-9	SCREW, #6-32 UNC X 3/8 SST, BUTTON HEAD CS	4
31	272-0125-2	COIL CONNECTOR ASSEMBLY	1

UNLESS OTHERWISE SPECIFIED
GLOBAL TOLERANCES

	INCHES	[mm]
.X	+/- .03	[0.762]
.XX	+/- .001	[0.254]
.XXX	+/- .0005	[0.127]
ANGLES	+/- .5°	
SURF FINISH	63 RMS	

DWG BY: G. DION
CHECK BY: DATE
PROJ ENG DATE
MFG ENG DATE

DO NOT SCALE DRAWING
FILE NUMBER
INITIAL PROJECT

MATERIAL: SEE PARTS LIST
FINISH: SEE NOTES

THIRD ANGLE PROJECTION

TELEMARK
Battle Ground, WA

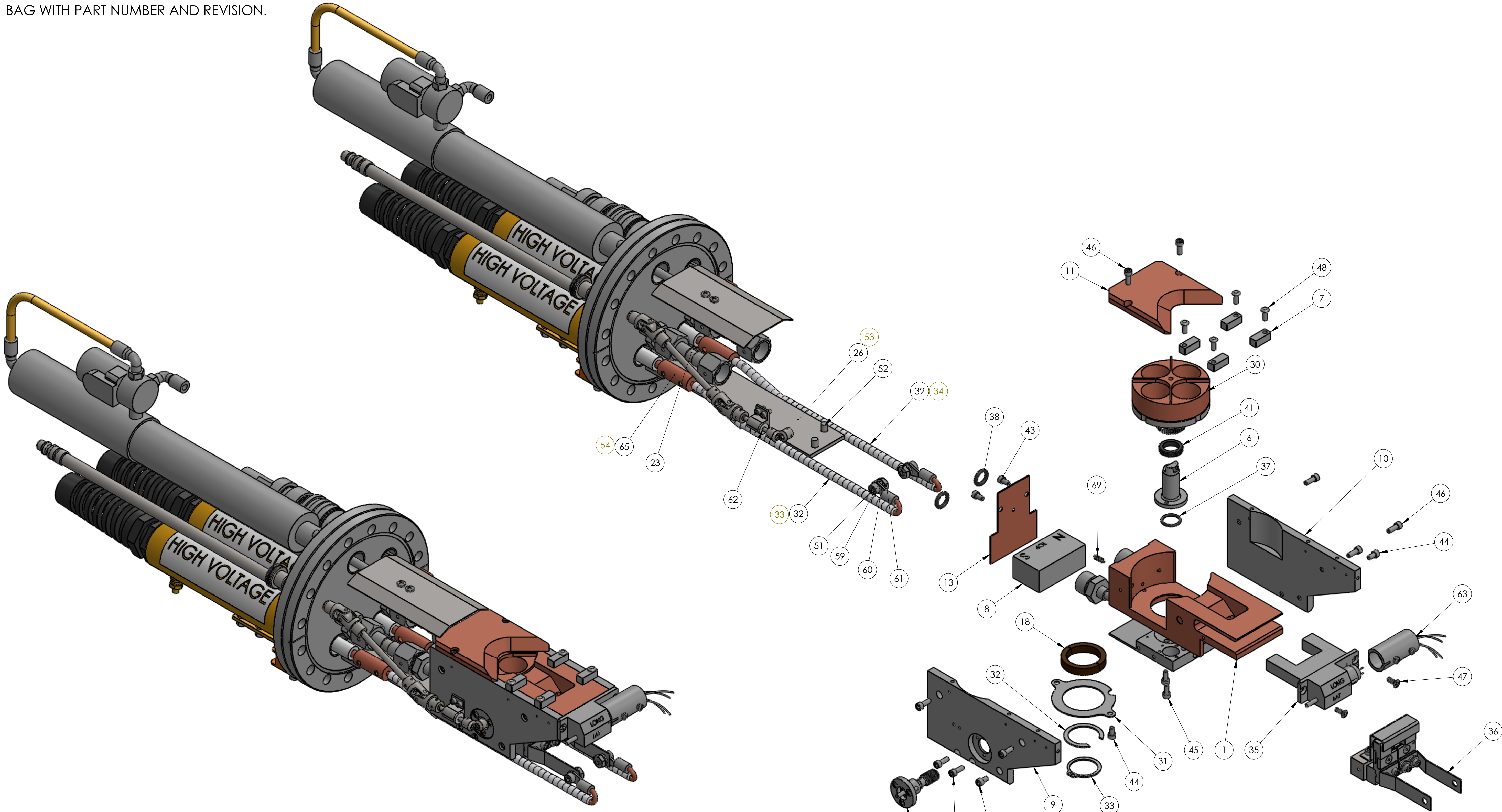
MODEL 224-63 EB SOURCE,
4 PKT, 4cc, RIGHT S/D






SCALE 1:1
SHEET 1 of 1

DWG NO. 224-9963-3
REV A1

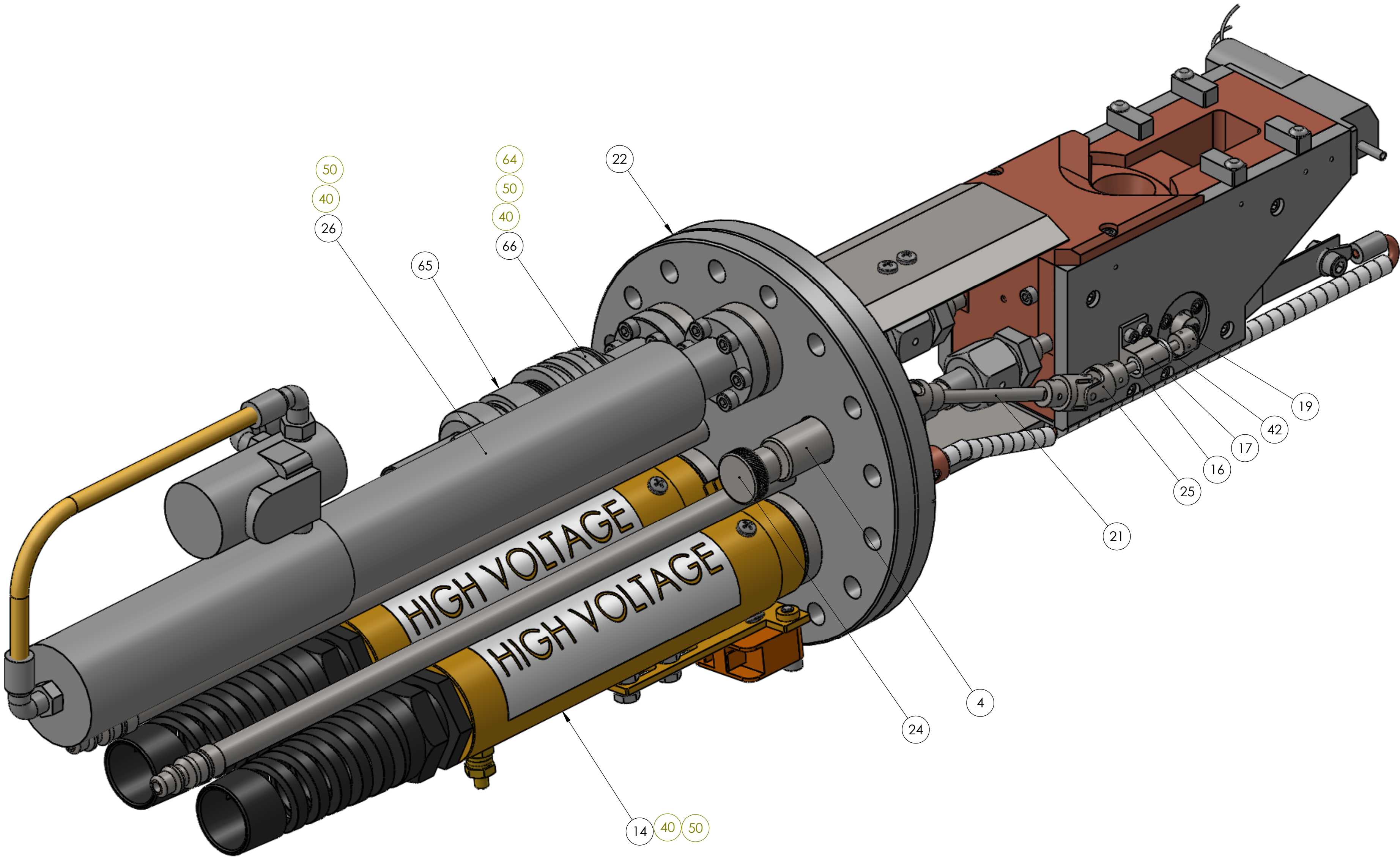
- NOTES: (UNLESS OTHERWISE SPECIFIED)
1. REMOVE BURRS & BREAK ALL SHARP EDGES
.005-.015 RADIUS OR CHAMFER.
2. ALL SURFACES $\sqrt{63}$
3. BAG WITH PART NUMBER AND REVISION.


ECN	ZONE	REV	DESCRIPTION	BY	DATE
		A	RELEASE	GPD	4/21/2014
		A1	REVISED DESCRIPTION & P/N	GPD	10/30/2014



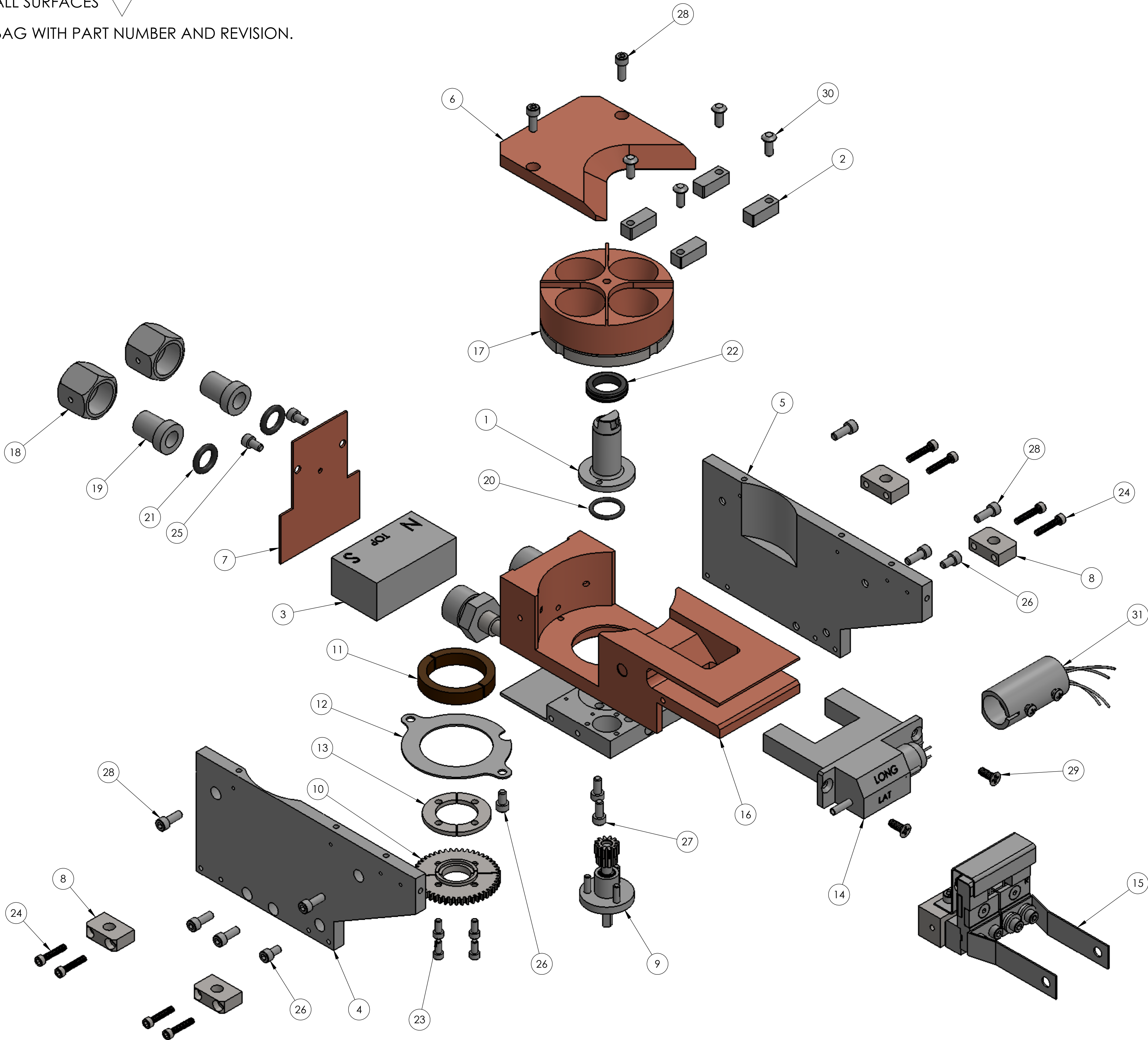
UNLESS OTHERWISE SPECIFIED		DWG BY: G. DION DATE: 4-21-2014		MATERIAL:	SEE PARTS LIST		Battle Ground, WA
GLOBAL TOLERANCES		CHECK BY: DATE		DATE			
INCHES [mm]		PROJ ENG DATE		DATE	FINISH:		
.X +/- .03 [0.762]		MFG ENG DATE		DATE			
.XX +/- .001 [0.254]		DO NOT SCALE DRAWING		THIRD ANGLE PROJECTION			
.XXX +/- .0005 [0.127]		FILE NUMBER		INITIAL PROJECT			
ANGLES +/- .5°							
SURF FINISH 63 RMS							
<p>CONFIDENTIAL: This document contains proprietary data of TELEMAR and is not to be copied or distributed without the prior written consent of TELEMAR. The receipt or possession of this document does not convey any rights to reproduce it, disclose its contents, or to manufacture, use or sell anything incorporating the concepts and details disclosed by it. Such concepts and details are not to be used other than for the benefit of TELEMAR and are not to be disclosed to others without the prior written consent of an officer of TELEMAR.</p>							
		MODEL 224-63 EB SOURCE, 4 PKT, 4cc, LEFT S/D, SIDE MOUNT ON 6" CFF					
D	SCALE 2:3	DWG NO. 224-9963-5		REV A			
SHEET 1	OF 2						

	A	B	
	ITEM NO.	PART NUMBER	DESCRIPTION
1	1	110-5203-2	SCREW, 1/4-20 UNC X 1/2, BRASS, PHILLIPS PAN HD
	2	110-7404-1	WASHER, 1/4, BRASS, LOCK, SPLIT
	3	110-7406-1	WASHER, 1/4, BRASS, FLAT
	4	221-0002-1	FEEDTHRU, ROTARY, INSTRUMENT, FERRO TYPE, 3/16" SHAFT
	5	221-0019-1	FEEDTHRU, HIGH VOLTAGE, 12kV AT 180 AMPS, 1.33 CFF
	6	221-0042-1	ASSEMBLY, PIVOT SHAFT
	7	221-0053-1	POLE PIECE
	8	221-0055-1	PERMANENT MAGNET
	9	221-0058-4	MAGNET ARM, LEFT
	10	221-0059-3	MAGNET ARM, RIGHT
	11	221-0073-2	COVER, 4 POCKET
	12	221-0084-1	REAR SHIELD
	13	221-0125-2	ASSEMBLY, SIDE DRIVE
	14	221-0211-1	ASSEMBLY, HIGH VOLTAGE COVER, 1.33 CFF
	15	221-0300-1	BEARING
2	16	221-0301-1	BEARING, SIDE DRIVE
	17	221-0302-1	BEARING HOUSING, SIDE DRIVE
	18	221-0303-2	SHAFT, SIDE DRIVE INDEXING
	19	221-0304-1	MITER GEAR SET, 72 PITCH, 1:1 RATIO, 24 TEETH, SST
	20	221-0305-2	ASSEMBLY, WELD, WATER ADAPTER
	21	221-0307-1	SHAFT, MANUAL INDEXING
	22	221-0310-1	ASSEMBLY, WELD, MODEL 221 SIDE MOUNT, 6" CFF
	23	221-0312-2	SUPPORT PLATE
	24	221-0313-1	KNOB, 3/16" BORE, SST
	25	221-0314-1	COUPLING, UNIVERSAL JOINT, 3/16" SHAFT, SST
3	26	221-0388-2	SHUTTER ASSEMBLY
	27	221-0656-1	BEARING STRAP
	28	221-0657-1	BEARING CLAMP PLATE
	29	221-0700-1	RETAINING RING, EXTERNAL, 15/16", SST
	30	221-0701-1	SPRING PLUNGER, LONG NOSE, #6-32 UNC, SST
	31	221-2801-1	INSULATOR BEAD
	32	221-3039-3	ASSEMBLY, HIGH VOLTAGE LEAD
	33	221-3039-4	ASSEMBLY, HIGH VOLTAGE LEAD
	34	222-0080-1	COIL ASSEMBLY
	35	223-0150-1	EMITTER ASSEMBLY
4	36	224-0111-1	ASSEMBLY, WELD, MAIN BLOCK
	37	224-0500-1	ASSEMBLY, WELD, CRUCIBLE BASE
	38	271-2014-1	O-RING, VITON, ID 1/2", W 1/16"
	39	271-2110-1	O-RING, VITON, ID 3/8", W 3/32"
	40	271-3581-1	GASKET, CFF 1.33"
	41	271-4206-1	QUAD RING, VITON, ID 1/2", W 1/8"
	42	271-5999-1	VENTED SCREW, #4-40 UNC X 1/4" SST SHCS
	43	271-6030-1	VENTED SCREW, #6-32 UNC X 1/4" SHCS
	44	271-6030-9	SCREW, #6-32 UNC X 1/4" SST, SHCS
	45	271-6040-9	SCREW, #6-32 UNC X 5/16 SST, SHCS
5	46	271-6050-1	VENTED SCREW, #6-32 UNC X 3/8" SHCS
	47	271-6052-6	SCREW, #6-32 UNC X 3/8" SST, PHILLIPS FLAT HEAD, SILVER
	48	271-6053-9	SCREW, #6-32 UNC X 3/8 SST, BUTTON HEAD CS
	49	271-6132-9	SCREW, #8-32 UNC X 9/16" SHCS.
	50	271-6145-9	SCREW, #10-32 UNF X 3/8" SST SHCS
	51	271-6146-4	SCREW, #10-32 UNF X 3/8" PHIL PAN HEAD, SST
	52	271-6152-9	SCREW, #10-32 UNF X 5/16" LONG, FLAT HD SOC, SST
	53	271-6200-2	SET SCREW, #8-32 UNC X 1/4 SST.
	54	271-6245-1	FLAT WASHER, #10 SST.
	55	271-6245-2	LOCK WASHER, #10 SST.
	56	271-6255-1	NUT, #10-32 UNF, SST
	57	271-6280-3	C-CLIP, 1/8", SST
	58	272-0125-2	COIL CONNECTOR ASSEMBLY
	59	275-0014-2	PIN CONNECTION
	66	275-0014-3	4 PIN INSTRUMENT FEEDTHRU, CFF
	61	275-0014-5	4 PIN CIRCULAR CONNECTOR
	62	275-0119-1	HV LUG (8 AWG)
	63	275-0119-3	HV LUG, EXTERNAL

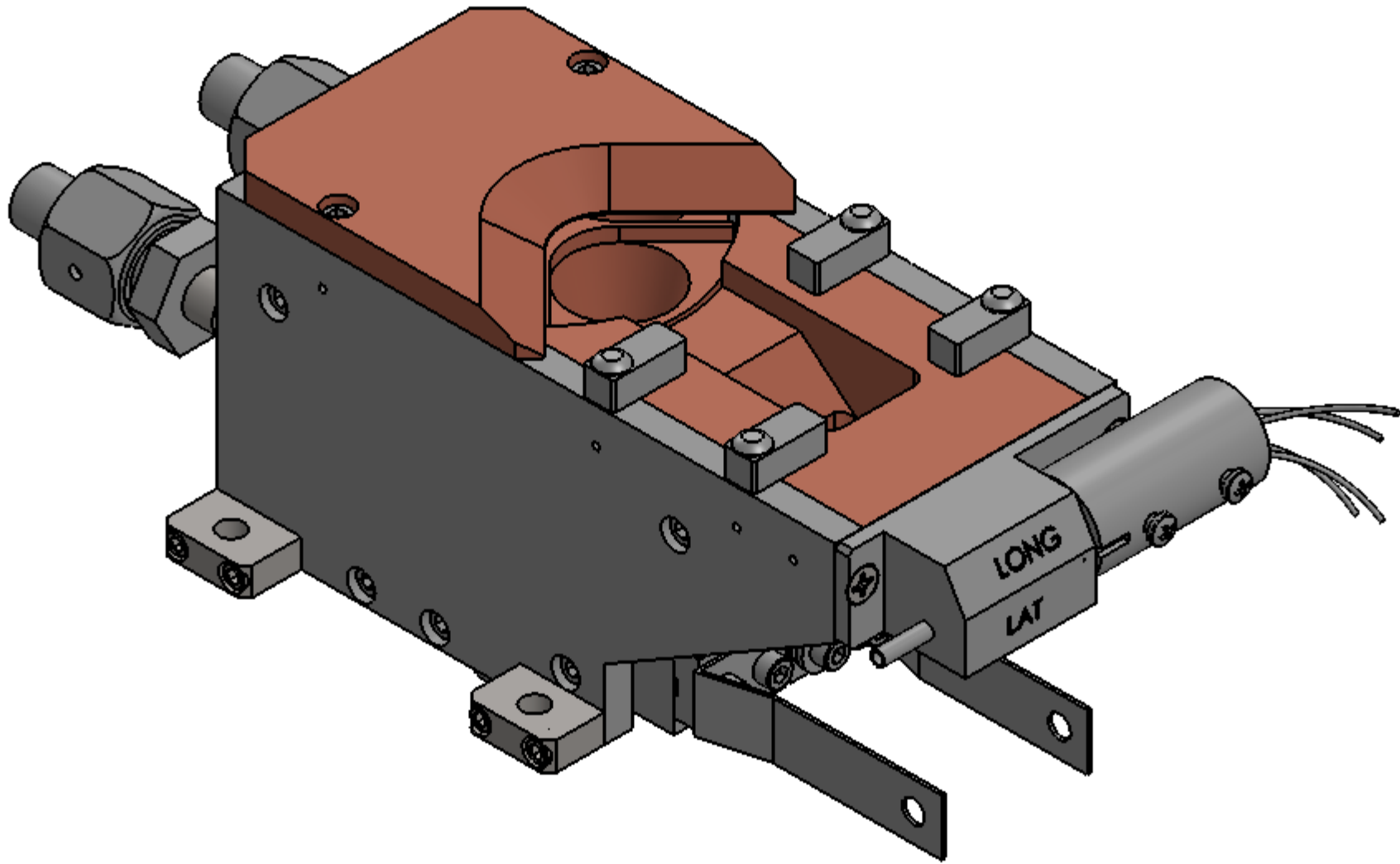


UNLESS OTHERWISE SPECIFIED		DWG BY: G. DION		DATE: 4-21-2014		MATERIAL: SEE PARTS LIST		TELEMARK		Battle Ground, WA	
GLOBAL TOLERANCES		CHECK BY: PROJ ENG		DATE: DATE		FINISH: DATE					
		MFG ENG		DATE: DATE		THIRD ANGLE PROJECTION					
		DO NOT SCALE DRAWING									
		FILE NUMBER: -									
		INITIAL PROJECT: -									
<p>CONFIDENTIAL. This document contains proprietary data of TELEMARK and is not to be copied or distributed without the prior written consent of TELEMARK. The receipt or possession of this document does not convey any rights to reproduce it, disclose its contents, or to manufacture, use or sell anything incorporating the concepts and details disclosed by it. Such concepts and details are not to be used other than for the benefit of TELEMARK and are not to be disclosed to others without the prior written consent of an officer of TELEMARK.</p>											
								TELEMARK			
								MODEL 224-63 EB SOURCE,			
								4 PKT, 4cc, LEFT S/D,			
								SIDE MOUNT ON 6" CFF			
								D SCALE 1:1		DWG NO. 224-9963-5	
								SHEET 2 of 2		REV A	

- NOTES: (UNLESS OTHERWISE SPECIFIED)
1. REMOVE BURRS & BREAK ALL SHARP EDGES
.005-.015 RADIUS OR CHAMFER.
 2. ALL SURFACES $\sqrt{63}$
 3. BAG WITH PART NUMBER AND REVISION.



ECN	ZONE	REV	DESCRIPTION	BY	DATE
		A	RELEASE	GPD	4/17/2014
		A1	REVISED DESCRIPTION & P/N	GPD	10/30/2014



ITEM NO.	PART NUMBER	DESCRIPTION	QTY.
1	221-0042-1	ASSEMBLY, PIVOT SHAFT	1
2	221-0053-1	POLE PIECE	4
3	221-0055-1	PERMANENT MAGNET	1
4	221-0058-1	MAGNET ARM, LEFT	1
5	221-0059-1	MAGNET ARM, RIGHT	1
6	221-0073-1	COVER, 4 POCKET	1
7	221-0084-1	REAR SHIELD	1
8	221-0088-1	MOUNTING BLOCK	4
9	221-0127-1	ASSEMBLY, WELD, MAIN BLOCK	1
10	221-0149-1	SPUR GEAR, 48 TEETH	1
11	221-0300-1	BEARING	1
12	221-0656-1	BEARING STRAP	1
13	221-0658-1	BEARING CLAMP PLATE	1
14	222-0080-1	COIL ASSEMBLY	1
15	223-0150-1	EMITTER ASSEMBLY	1
16	224-0111-1	ASSEMBLY, WELD, MAIN BLOCK	1
17	224-0500-2	ASSEMBLY, CRUCIBLE BASE	1
18	271-0650-2	WATER FITTING NUT	2
19	271-0651-2	WATER FITTING GLAND	2
20	271-2014-1	O-RING, VITON, ID 1/2", W 1/16"	1
21	271-2110-1	O-RING, VITON, ID 3/8", W 3/32"	2
22	271-4206-1	QUAD RING, VITON, ID 1/2", W 1/8"	1
23	271-5999-1	VENTED SCREW, #4-40 X 1/4" SST, SHCS	4
24	271-6002-8	SCREW, #4-40 X 9/16" SST, SHCS	8
25	271-6030-1	VENTED SCREW, #6-32 X 1/4" SST, SHCS	2
26	271-6030-9	SCREW, #6-32 UNC X 1/4" SST, SHCS	4
27	271-6040-9	SCREW, #6-32 UNC X 5/16 SST, SHCS	2
28	271-6050-1	VENTED SCREW, #6-32 X 3/8" SST, SHCS	9
29	271-6052-6	SCREW, #6-32 UNC X 3/8" SST, PHILLIPS FLAT HEAD, SILVER	2
30	271-6053-9	SCREW, #6-32 UNC X 3/8 SST, BUTTON HEAD CS	4
31	272-0125-2	COIL CONNECTOR ASSEMBLY	1

UNLESS OTHERWISE SPECIFIED
GLOBAL TOLERANCES

.X	+/- .03	[.762]
.XX	+/- .001	[.0254]
.XXX	+/- .0005	[.0127]

ANGLES +/- .5°
SURF FINISH 63 RMS

DWG BY: G. DION
CHECK BY: DATE
PROJ ENG DATE
MFG ENG DATE

DO NOT SCALE DRAWING

FILE NUMBER
INITIAL PROJECT

MATERIAL: SEE PARTS LIST

FINISH: SEE NOTES

THIRD ANGLE PROJECTION

TELEMARK
Battle Ground, WA

**MODEL 224-64 EB SOURCE,
4 PKT, 4cc, B/D**

SCALE **1:1**
SHEET **1** of **1**

DWG NO. **224-9964-1**

REV **A1**

CONFIDENTIAL: This document contains proprietary data of TELEMARK and is not to be copied or distributed without the prior written consent of TELEMARK. This receipt or possession of this document does not convey any rights to reproduce it, disclose its contents, or to manufacture, use or sell anything incorporating the concepts and details disclosed by it. Such concepts and details are not to be used other than for the benefit of TELEMARK and are not to be disclosed to others without the prior written consent of an officer of TELEMARK.

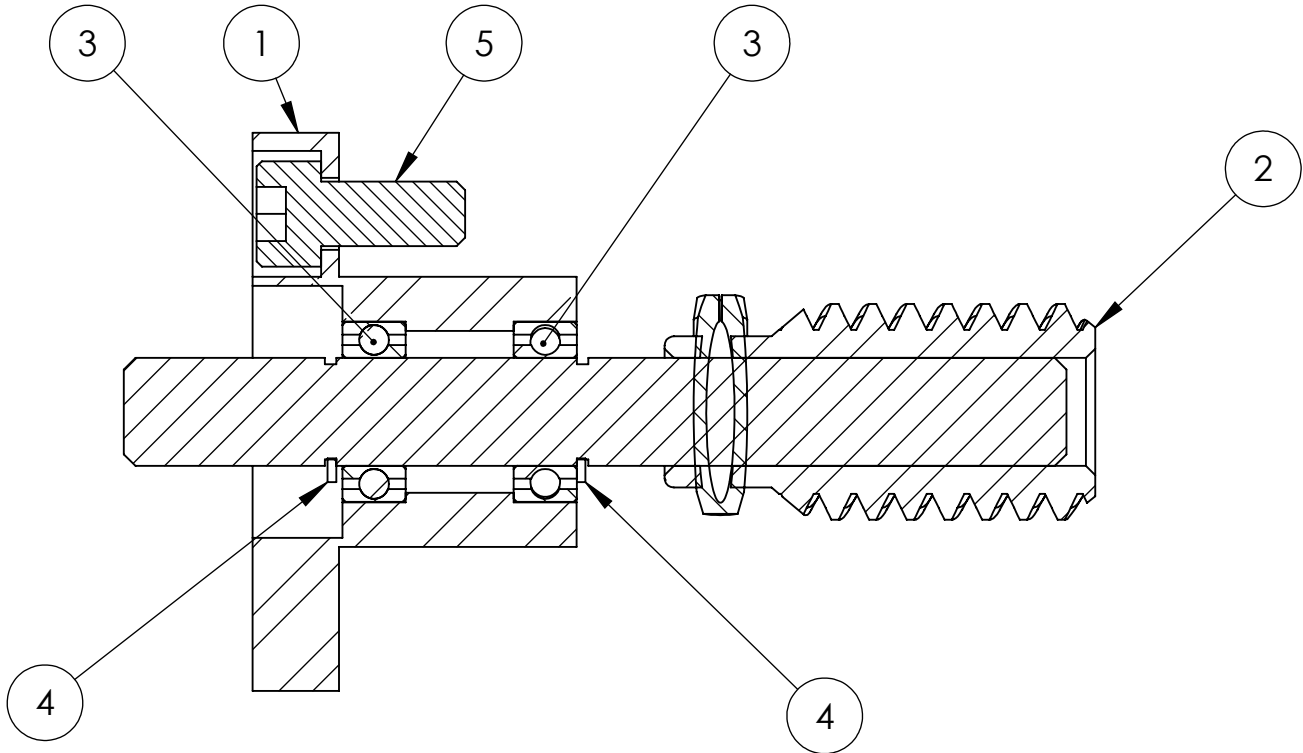
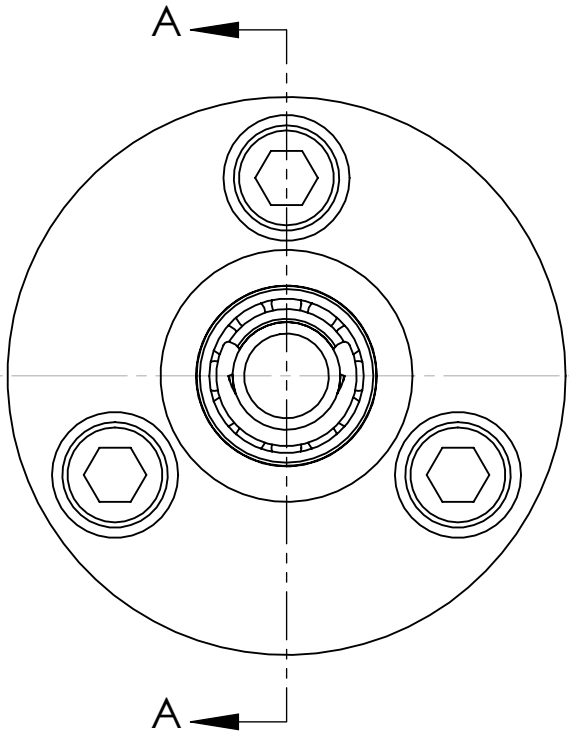


Common Assemblies

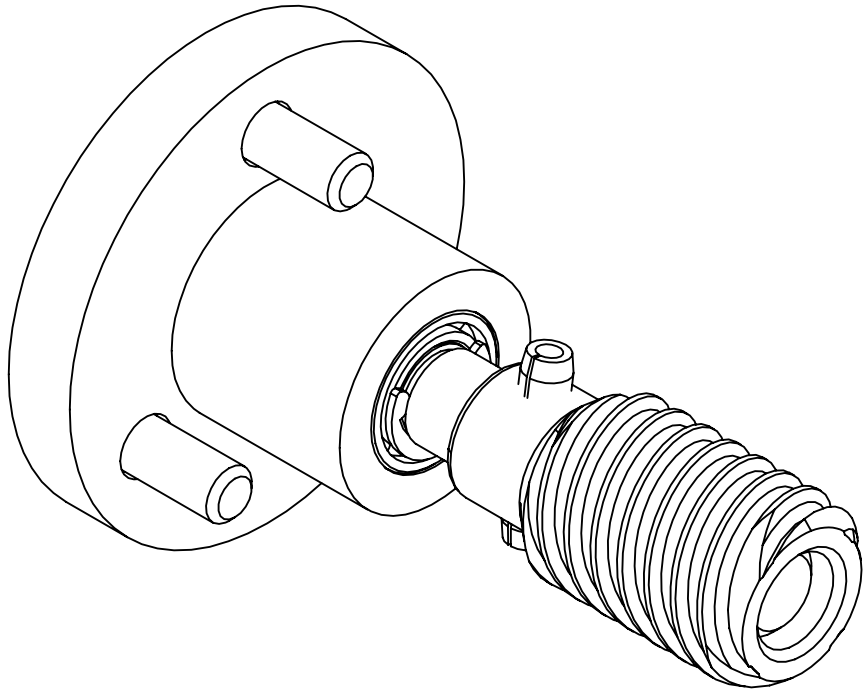
E-Beam Source

- NOTES: (UNLESS OTHERWISE SPECIFIED)
1. REMOVE BURRS & BREAK ALL SHARP EDGES
.005-.015 RADIUS OR CHAMFER.
 2. ALL SURFACES $\sqrt{63}$
 3. BAG WITH PART NUMBER AND REVISION.


ECN	ZONE	REV	DESCRIPTION	BY	DATE
		A	RELEASE	GPD	10/21/2013

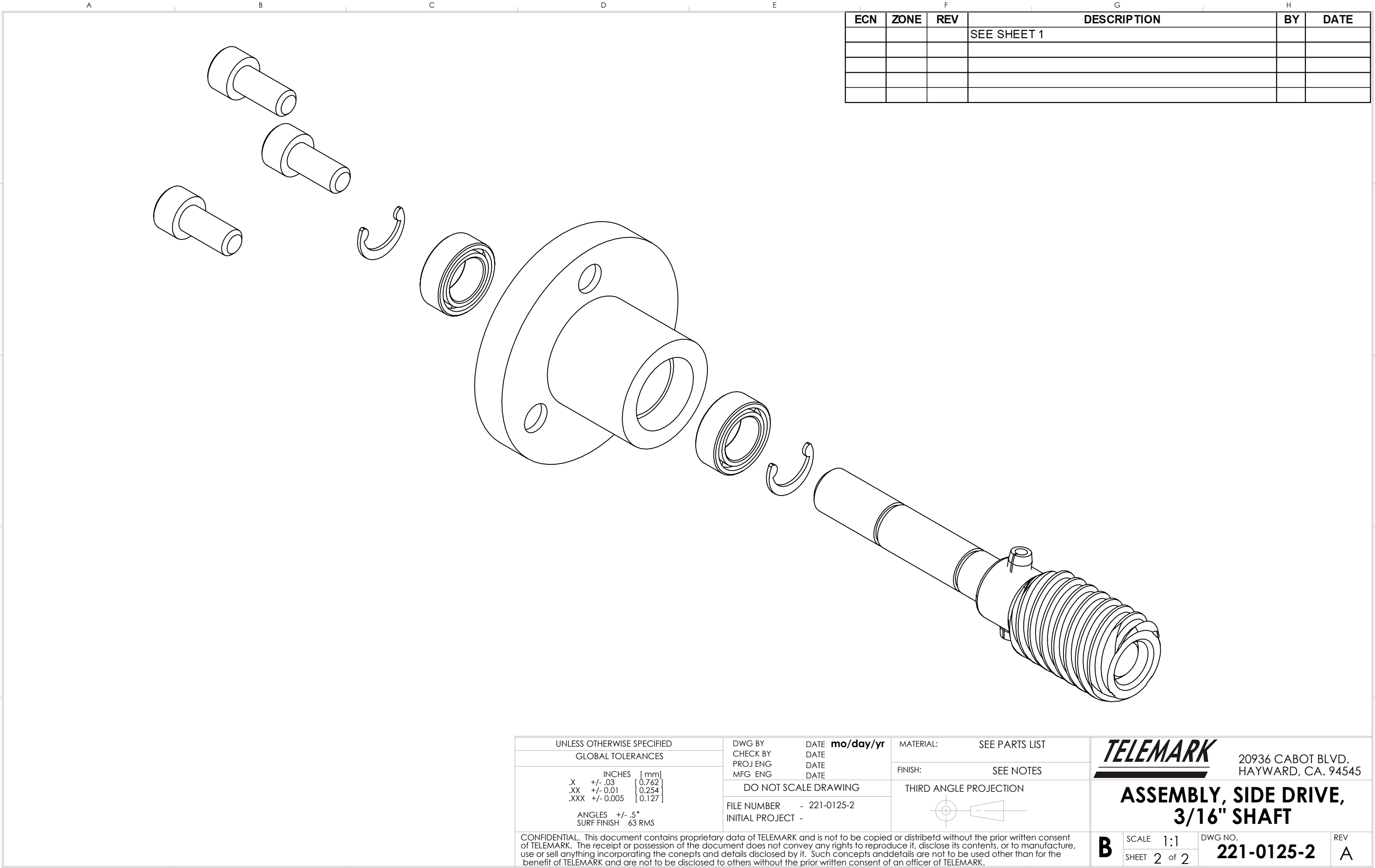


SECTION A-A
SCALE 3 : 1



ITEM NO.	PART NUMBER	DESCRIPTION	QTY.
1	221-0010-2	HOUSING, SIDE DRIVE	1
2	221-0011-7	SHAFT ASSEMBLY, SIDE DRIVE	1
3	221-0152-1	BEARING, 3/16" I.D. X 5/16" O.D. X .109 THICK, SST	2
4	271-6280-2	C-CLIP, 3/16", SST	2
5	271-5999-1	VENTED SCREW, #4-40 UNC X 1/4" SST SHCS	3

UNLESS OTHERWISE SPECIFIED		DWG BY G. DION DATE 10-21-2013		MATERIAL: SEE PARTS LIST		TELEMARK		Battle Ground, WA		
GLOBAL TOLERANCES		CHECK BY _____ DATE _____ PROJ ENG _____ DATE _____ MFG ENG _____ DATE _____		FINISH: SEE NOTES		ASSEMBLY, SIDE DRIVE, 3/16" SHAFT				
INCHES [mm] .X +/- .03 [0.762] .XX +/- 0.01 [0.254] .XXX +/- 0.005 [0.127]		DO NOT SCALE DRAWING		THIRD ANGLE PROJECTION 						
ANGLES +/- .5° SURF FINISH 63 RMS		FILE NUMBER - 221-0125-2 INITIAL PROJECT -								
CONFIDENTIAL. This document contains proprietary data of TELEMARK and is not to be copied or distributed without the prior written consent of TELEMARK. The receipt or possession of the document does not convey any rights to reproduce it, disclose its contents, or to manufacture, use or sell anything incorporating the concepts and details disclosed by it. Such concepts and details are not to be used other than for the benefit of TELEMARK and are not to be disclosed to others without the prior written consent of an officer of TELEMARK.						B		SCALE 3:1 SHEET 1 of 2	DWG NO. 221-0125-2	REV A



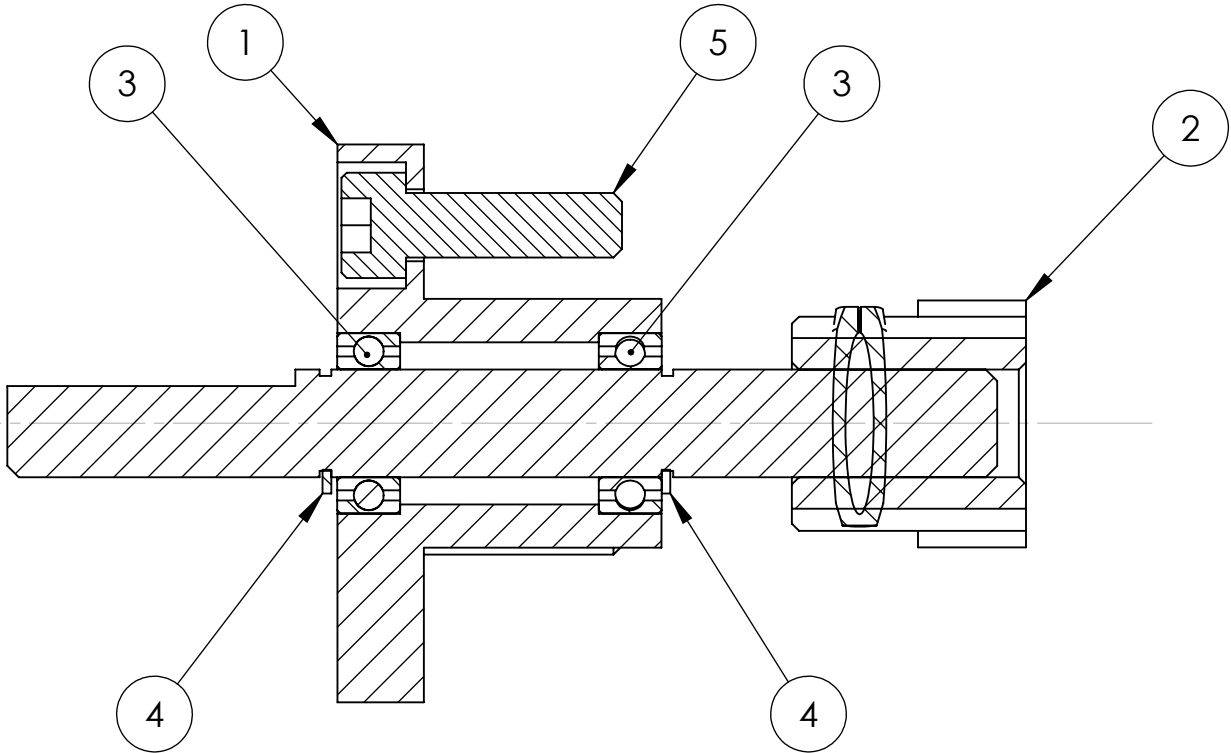
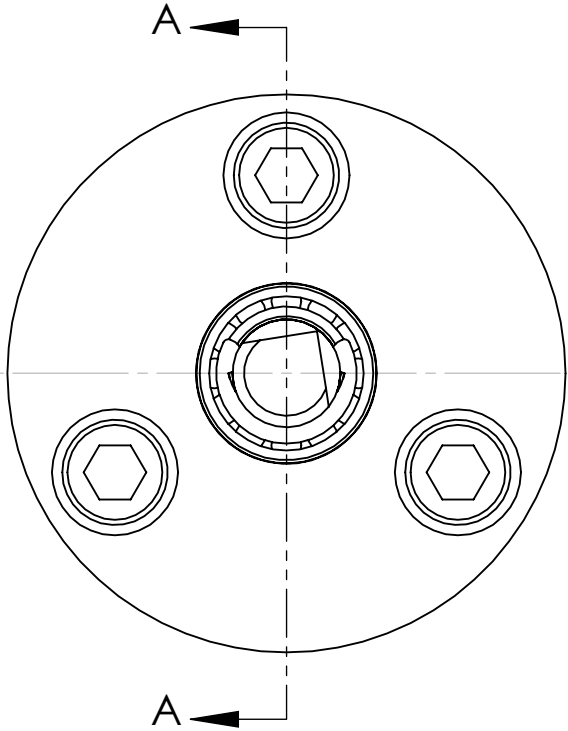
ECN	ZONE	REV	DESCRIPTION	BY	DATE
			SEE SHEET 1		

UNLESS OTHERWISE SPECIFIED GLOBAL TOLERANCES		DWG BY CHECK BY PROJ ENG MFG ENG	DATE mo/day/yr DATE DATE DATE	MATERIAL: SEE PARTS LIST	<div>TELEMARK</div> <div>20936 CABOT BLVD. HAYWARD, CA. 94545</div>		
INCHES [mm] .X +/- .03 [0.762] .XX +/- 0.01 [0.254] .XXX +/- 0.005 [0.127] ANGLES +/- .5° SURF FINISH 63 RMS		DO NOT SCALE DRAWING		FINISH: SEE NOTES			
FILE NUMBER - 221-0125-2 INITIAL PROJECT -		THIRD ANGLE PROJECTION					
CONFIDENTIAL. This document contains proprietary data of TELEMARK and is not to be copied or distribetd without the prior written consent of TELEMARK. The receipt or possession of the document does not convey any rights to reproduce it, disclose its contents, or to manufacture, use or sell anything incorporating the conepts and details disclosed by it. Such concepts anddetails are not to be used other than for the benefit of TELEMARK and are not to be disclosed to others without the prior written consent of an officer of TELEMARK.					<div>B</div> <div>SCALE 1:1 SHEET 2 of 2</div>	DWG NO. 221-0125-2	REV A

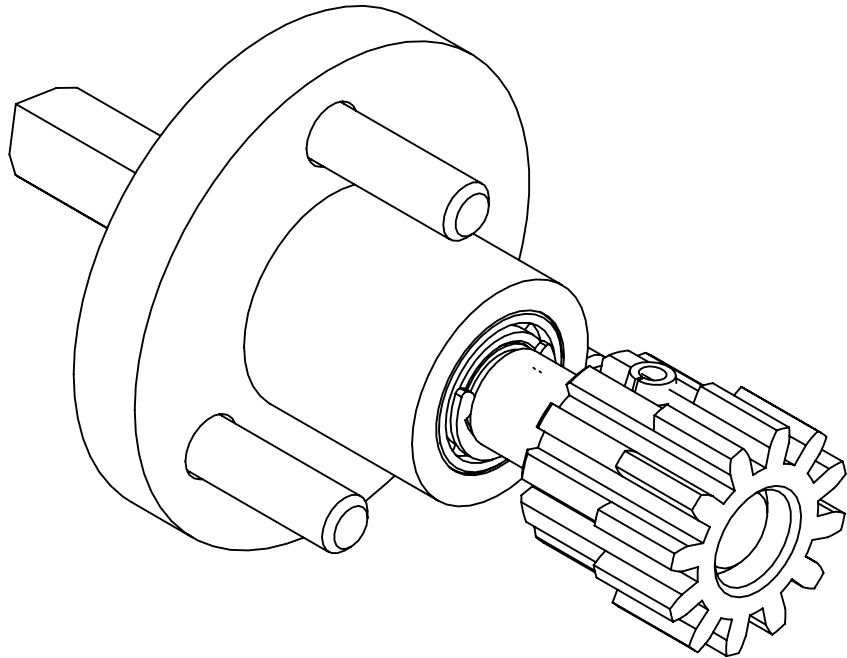
**ASSEMBLY, SIDE DRIVE,
3/16" SHAFT**

- NOTES: (UNLESS OTHERWISE SPECIFIED)
1. REMOVE BURRS & BREAK ALL SHARP EDGES
.005-.015 RADIUS OR CHAMFER.
 2. ALL SURFACES $\sqrt{63}$
 3. BAG WITH PART NUMBER AND REVISION.


ECN	ZONE	REV	DESCRIPTION	BY	DATE
		A	RELEASE	GPD	8/12/2013

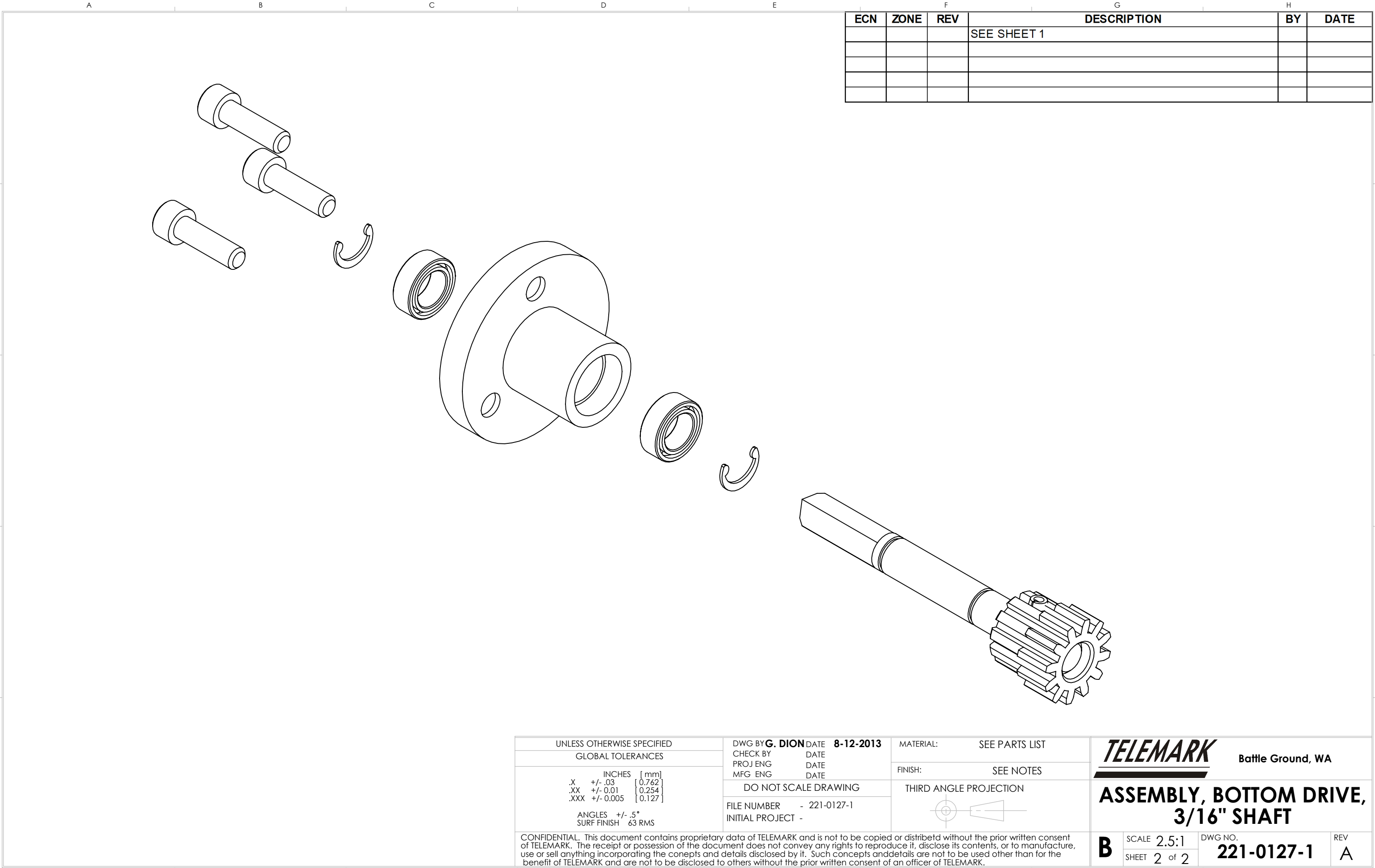


SECTION A-A
SCALE 3 : 1



ITEM NO.	PART NUMBER	DESCRIPTION	QTY.
1	221-0010-1	HOUSING, BOTTOM DRIVE	1
2	221-0011-5	SHAFT ASSEMBLY, BOTTOM DRIVE	1
3	221-0152-1	BEARING, 3/16" I.D. X 5/16" O.D. X .109 THICK, SST	2
4	271-6280-2	C-CLIP, 3/16", SST	2
5	271-6000-9	SCREW, #4-40 X 3/8" SST SHCS	3

UNLESS OTHERWISE SPECIFIED GLOBAL TOLERANCES		DWG BY G. DION DATE 8-12-2013		MATERIAL: SEE PARTS LIST		TELEMARK Battle Ground, WA		
<div>INCHES [mm]</div> <div><div>.X +/- .03 [0.762]</div><div>.XX +/- 0.01 [0.254]</div><div>.XXX +/- 0.005 [0.127]</div></div> <div>ANGLES +/- .5° SURF FINISH 63 RMS</div>		CHECK BY DATE		FINISH: SEE NOTES		ASSEMBLY, BOTTOM DRIVE, 3/16" SHAFT		
		PROJ ENG DATE		THIRD ANGLE PROJECTION 				
		MFG ENG DATE						
		DO NOT SCALE DRAWING						
		FILE NUMBER - 221-0127-1						
		INITIAL PROJECT -						
CONFIDENTIAL. This document contains proprietary data of TELEMARK and is not to be copied or distributed without the prior written consent of TELEMARK. The receipt or possession of the document does not convey any rights to reproduce it, disclose its contents, or to manufacture, use or sell anything incorporating the concepts and details disclosed by it. Such concepts and details are not to be used other than for the benefit of TELEMARK and are not to be disclosed to others without the prior written consent of an officer of TELEMARK.								
				B		SCALE 3:1 SHEET 1 of 2	DWG NO. 221-0127-1	REV A



ECN	ZONE	REV	DESCRIPTION	BY	DATE
			SEE SHEET 1		

UNLESS OTHERWISE SPECIFIED

GLOBAL TOLERANCES

	INCHES	[mm]
.X	+/- .03	[0.762]
.XX	+/- 0.01	[0.254]
.XXX	+/- 0.005	[0.127]

ANGLES

+/- .5°

SURF FINISH

63 RMS

DWG BY **G. DION**

CHECK BY

PROJ ENG

MFG ENG

DATE **8-12-2013**

DATE

DATE

DATE

DO NOT SCALE DRAWING

FILE NUMBER - 221-0127-1

INITIAL PROJECT -

MATERIAL:

SEE PARTS LIST

FINISH:

SEE NOTES

THIRD ANGLE PROJECTION

TELEMARK

Battle Ground, WA

**ASSEMBLY, BOTTOM DRIVE,
3/16" SHAFT**

B

SCALE 2.5:1

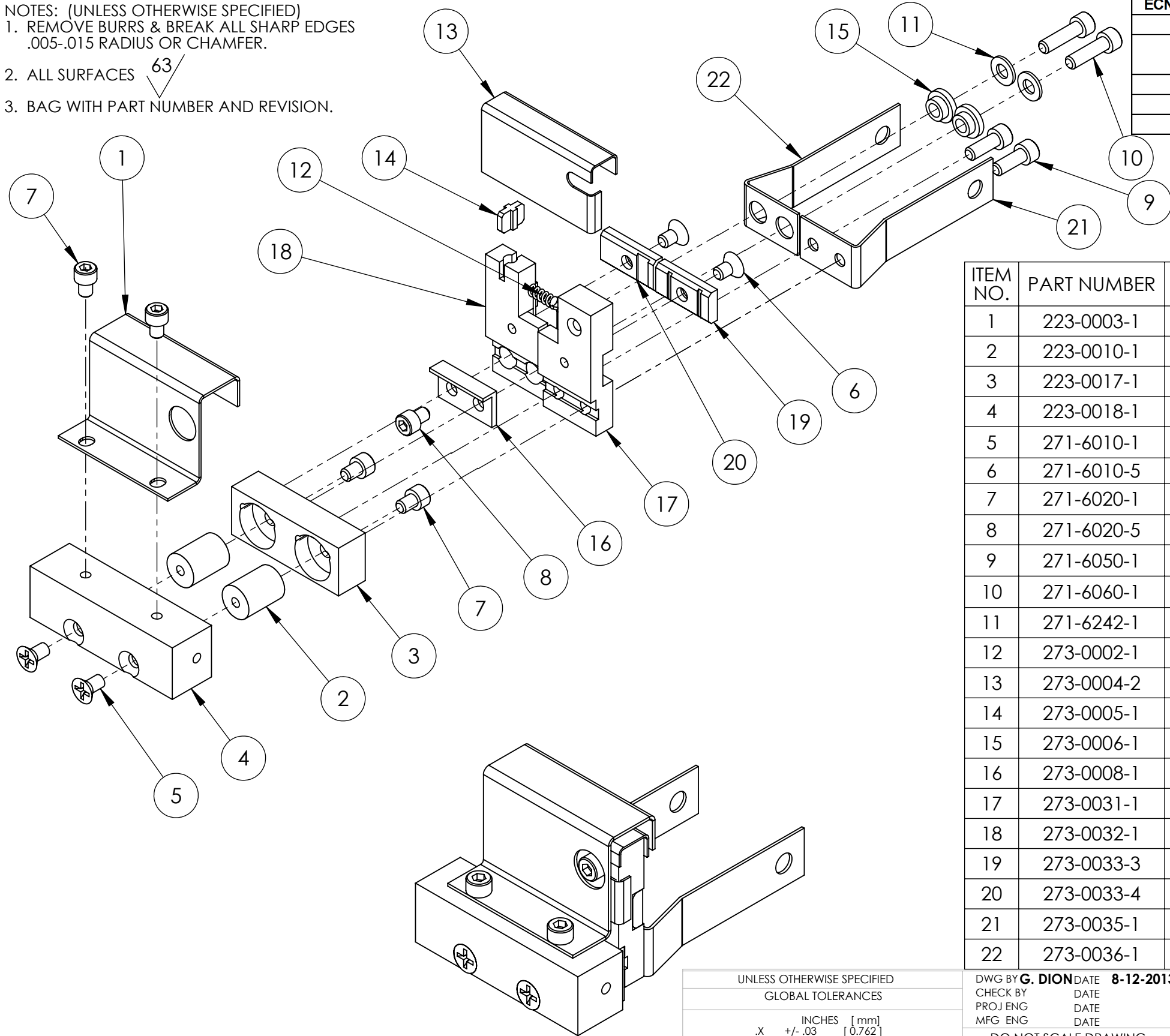
SHEET 2 of 2

DWG NO. **221-0127-1**

REV **A**

CONFIDENTIAL. This document contains proprietary data of TELEMARK and is not to be copied or distribetd without the prior written consent of TELEMARK. The receipt or possession of the document does not convey any rights to reproduce it, disclose its contents, or to manufacture, use or sell anything incorporating the conepts and details disclosed by it. Such concepts anddetails are not to be used other than for the benefit of TELEMARK and are not to be disclosed to others without the prior written consent of an officer of TELEMARK.

- NOTES: (UNLESS OTHERWISE SPECIFIED)
1. REMOVE BURRS & BREAK ALL SHARP EDGES
.005-.015 RADIUS OR CHAMFER.
 2. ALL SURFACES $\sqrt{63}$
 3. BAG WITH PART NUMBER AND REVISION.



ECN	ZONE	REV	DESCRIPTION	BY	DATE
		A	RELEASE	GPD	8/12/2013
		A1	ITEM 20 FROM 271-6052-6 TO 271-6010-9 & ITEM 23 FROM 271-6030-9 TO 271-6020-9	GPD	10/2/2013
		B	REVISED HARDWARE	GPD	5/31/2017

ITEM NO.	PART NUMBER	DESCRIPTION	QTY.
1	223-0003-1	ANODE	1
2	223-0010-1	HV INSULATOR	2
3	223-0017-1	MOUNTING BRACKET	1
4	223-0018-1	SUPPORT BRACKET	1
5	271-6010-1	VENTED SCREW, #6-32 UNC X 1/4" LONG, SST, FLAT HEAD	2
6	271-6010-5	SCREW, #6-32 X 1/4" SLOT FLAT HEAD, Ti	2
7	271-6020-1	VENTED SCREW, #6-32 X 3/16" SST SHCS	4
8	271-6020-5	SCREW, #6-32 X 3/16" TI SHCS	1
9	271-6050-1	VENTED SCREW, #6-32 UNC X 3/8" SHCS	2
10	271-6060-1	VENTED SCREW, #6-32 X 1/2" SST SHCS	2
11	271-6242-1	FLAT WASHER, #6 SST	2
12	273-0002-1	FILAMENT, 5-1/2 TURN	1
13	273-0004-2	BEAM FORMER	1
14	273-0005-1	INSULATOR, CROSS	1
15	273-0006-1	INSULATOR, COLLAR	2
16	273-0008-1	L INSULATOR	1
17	273-0031-1	CATHODE BLOCK, LEFT	1
18	273-0032-1	CATHODE BLOCK, RIGHT	1
19	273-0033-3	FILAMENT CLAMP, LEFT	1
20	273-0033-4	FILAMENT CLAMP, RIGHT	1
21	273-0035-1	EMITTER BUS BAR, LEFT	1
22	273-0036-1	FILAMENT BUS BAR, RIGHT	1

UNLESS OTHERWISE SPECIFIED
GLOBAL TOLERANCES

	INCHES	[mm]
.X	+/- .03	[0.762]
.XX	+/- 0.01	[0.254]
.XXX	+/- 0.005	[0.127]

ANGLES +/- .5°
SURF FINISH $\sqrt{63}$ RMS

DWG BY **G. DION** DATE **8-12-2013**
CHECK BY _____ DATE _____
PROJ ENG _____ DATE _____
MFG ENG _____ DATE _____

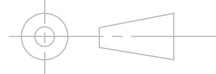
DO NOT SCALE DRAWING

FILE NUMBER - 223-0150-1
INITIAL PROJECT -

MATERIAL: SEE PART LIST

FINISH: SEE NOTES

THIRD ANGLE PROJECTION



TELEMARK

Battle Ground, WA

EMITTER ASSEMBLY

B

SCALE 7:8
SHEET 1 of 1

DWG NO.
223-0150-1

REV
B

CONFIDENTIAL. This document contains proprietary data of TELEMARK and is not to be copied or distributed without the prior written consent of TELEMARK. The receipt or possession of the document does not convey any rights to reproduce it, disclose its contents, or to manufacture, use or sell anything incorporating the concepts and details disclosed by it. Such concepts and details are not to be used other than for the benefit of TELEMARK and are not to be disclosed to others without the prior written consent of an officer of TELEMARK.