

TELEMARK 244 Multi Pocket E-Beam Source Drawings

The current version of this drawing pdf can be found at

<https://telemark.com/electron-beam-sources/r-and-d-multi-pocket-sources/>

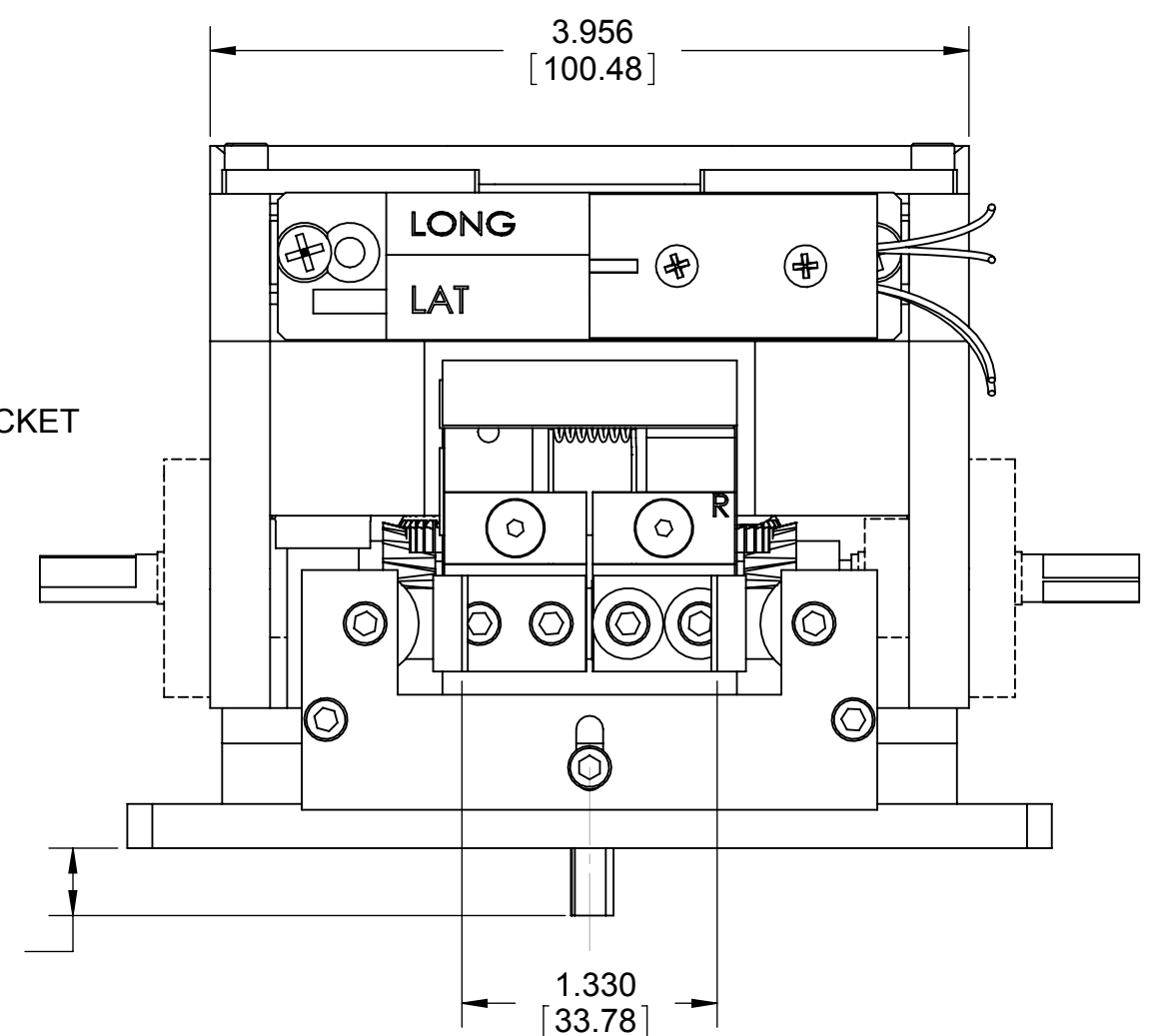
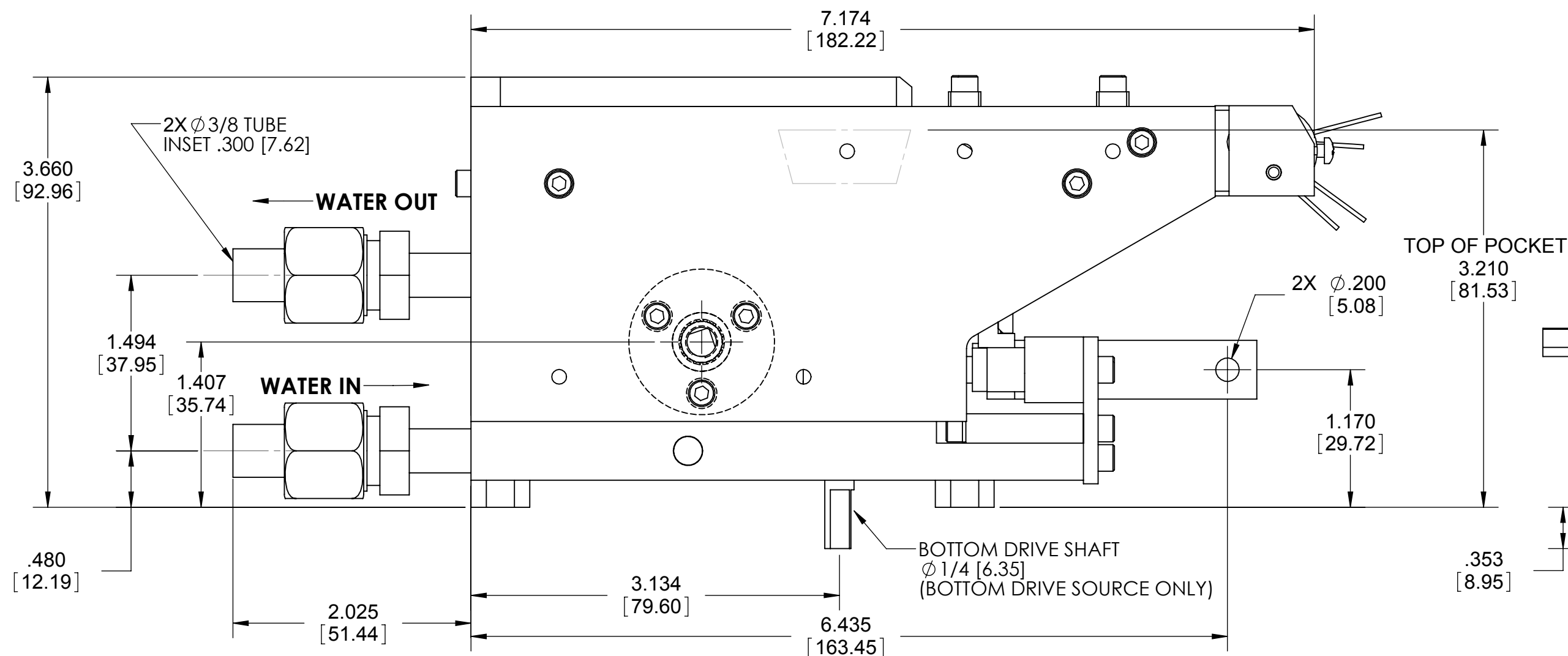
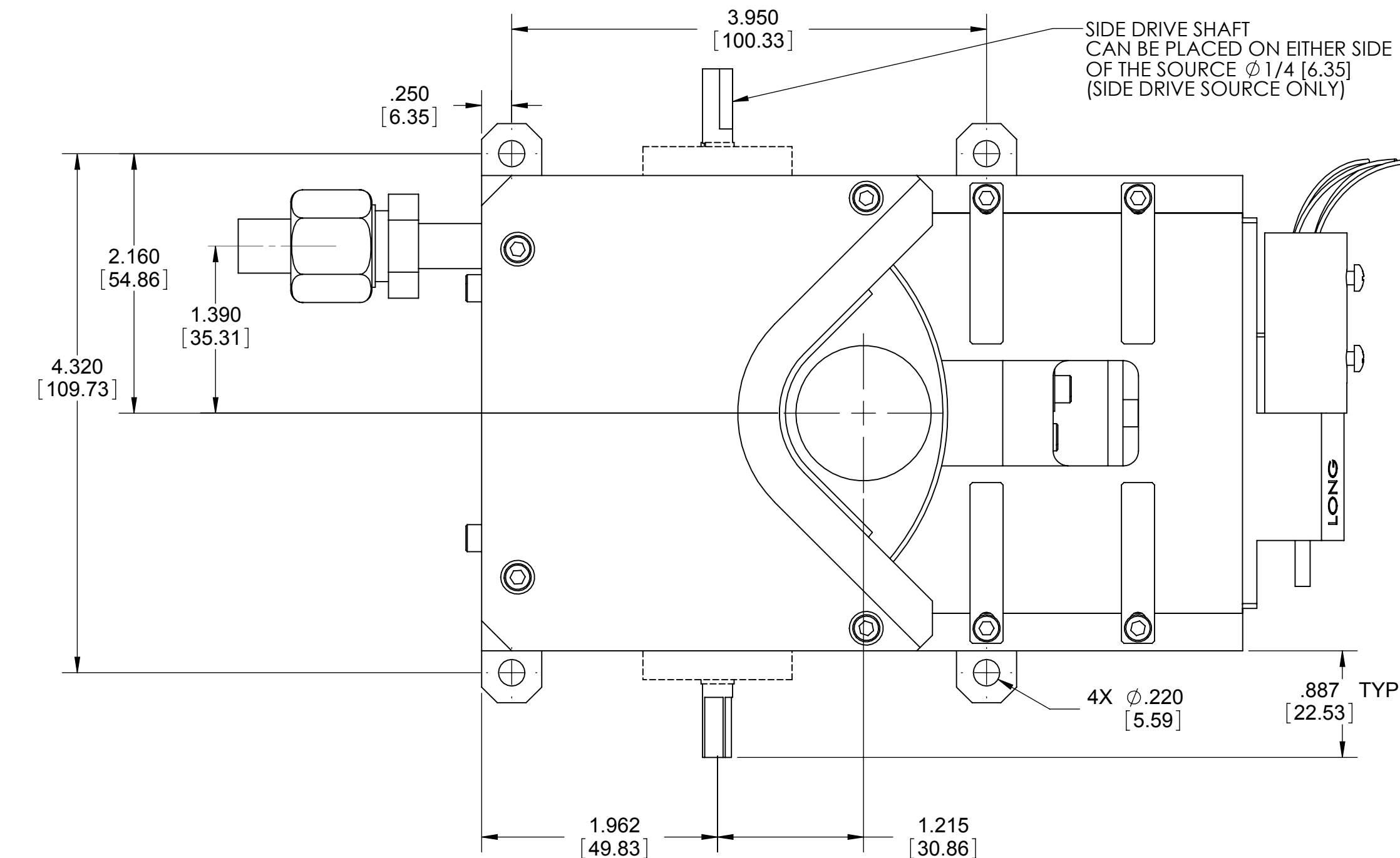
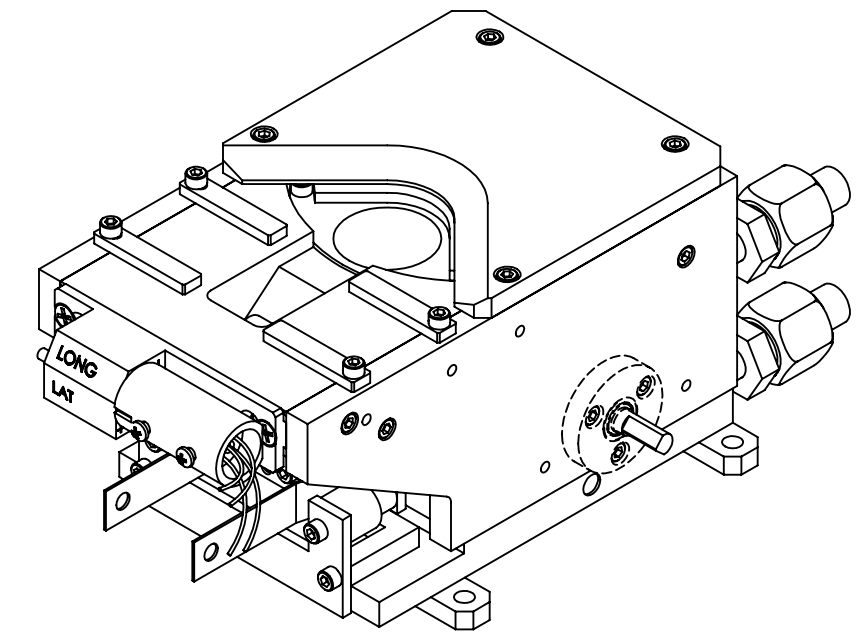
Drawing	Rev.	Description	Page
Reference Dimensions			2
R244-0001	B1	Model 244 E-Beam Source Dimensions	3
Model Assemblies			4
244-9905-1	B	Model 244-05 EB Source, 6 pkt, 7cc, S/D	5
244-9906-1	B	Model 244-06 EB Source, 6 pkt, 7cc, B/D	6
244-9915-1	A	Model 244-15 EB Source, Trough 45cc, S/D	7
244-9916-1	A	Model 244-16 EB Source, Trough 45cc, B/D	8
244-9927-1	B	Model 244-27 EB Source, 4 pkt, 7cc, S/D	9
244-9928-1	B	Model 244-28 EB Source, 4 pkt, 7cc, B/D	10
244-9963-1	B	Model 244-63 EB Source, 4 pkt, 4cc, S/D	11
244-9964-1	B	Model 244-64 EB Source, 4 pkt, 4cc, B/D	12
244-9965-1	B	Model 244-65 EB Source, 6 pkt, 4cc, S/D	13
244-9966-1	B	Model 244-66 EB Source, 6 pkt, 4cc, B/D	14
Common Assemblies			15
244-0125-1	B	Side Drive Assembly	16
244-0127-1	B	Bottom Drive Assembly	17
244-0133-1	C	EB Source Sub Assembly, SD	18
244-0135-1	C	EB Source Sub Assembly, BD	19
273-0150-8	A1	Emitter Assy, 7-1/2 Turn Filament, -8	20





Reference Dimensions

E-Beam Source

ECN	ZONE	REV	DESCRIPTION	BY	DATE
		A	RELEASE	PWF	5/11/2010
		B	UPDATE	PWF	7/29/2010
		B1	UPDATE	PWF	4/29/2011

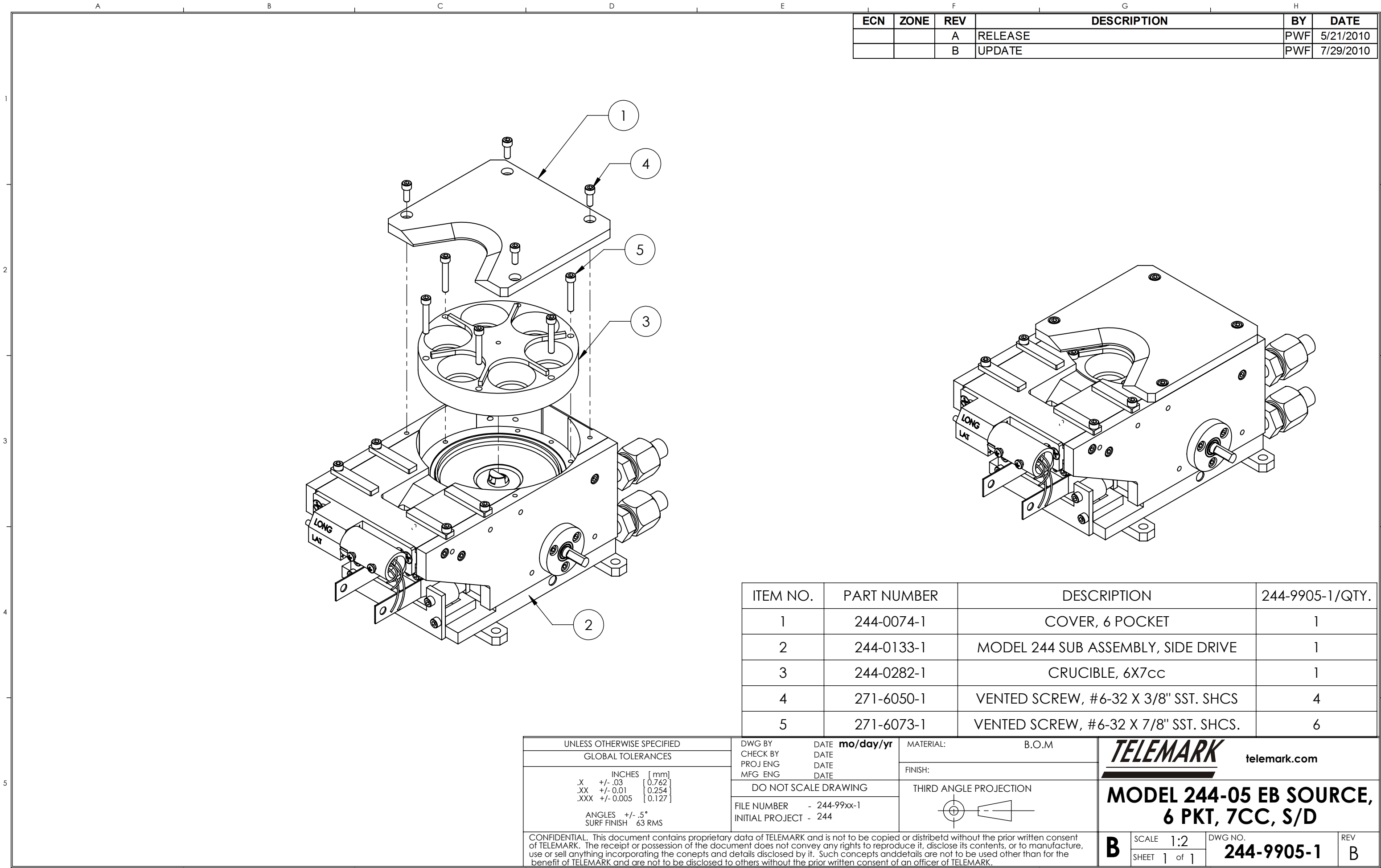


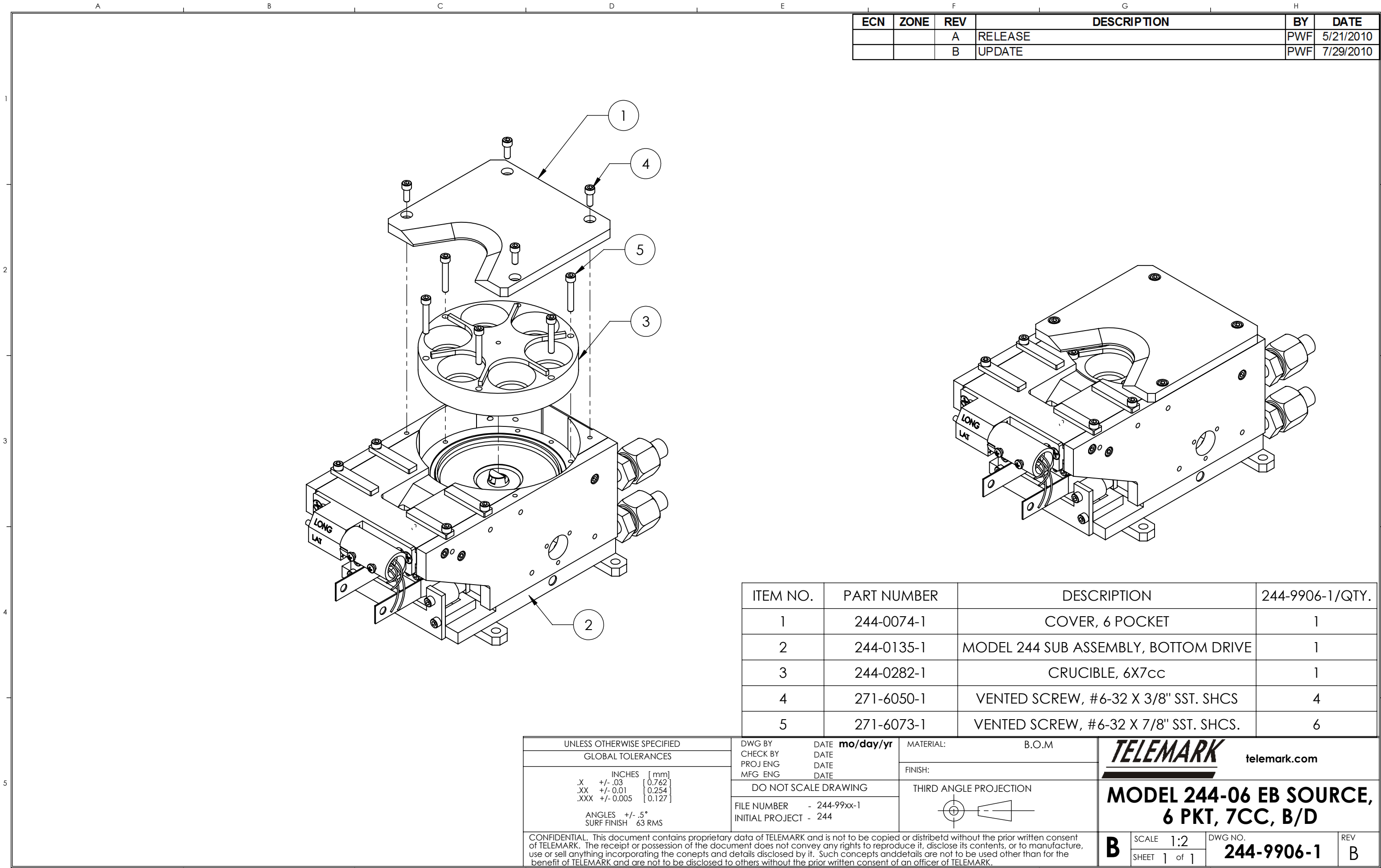
UNLESS OTHERWISE SPECIFIED GLOBAL TOLERANCES		DWG BY CHECK BY PROJ ENG MFG ENG	DATE DATE DATE DATE	mo/day/yr	MATERIAL: B.O.M.	 telemark.com	
INCHES [mm] .X +/- .03 [0.762] .XX +/- .001 [0.254] .XXX +/- .0005 [0.127]		DO NOT SCALE DRAWING		THIRD ANGLE PROJECTION			
ANGLES +/- .5° SURF FINISH 63 RMS		FILE NUMBER - 244-013x-1 INITIAL PROJECT - 244					
CONFIDENTIAL. This document contains proprietary data of TELEMARK and is not to be copied or distributed without the prior written consent of TELEMARK. The receipt or possession of the document does not convey any rights to reproduce it, disclose its contents, or to manufacture, use or sell anything incorporating the concepts and details disclosed by it. Such concepts and details are not to be used other than for the specific benefit of TELEMARK. If this document is to be used for any other purpose, the consent of TELEMARK must be obtained in writing.						<div> <div>C</div> <div> SCALE 1:1 SHEET 1 of 1 </div> </div> <div> DWG NO. R244-0001 </div> <div> REV B1 </div>	



Model Assemblies

E-Beam Sources





1

2

3

4

5

A

B

C

D

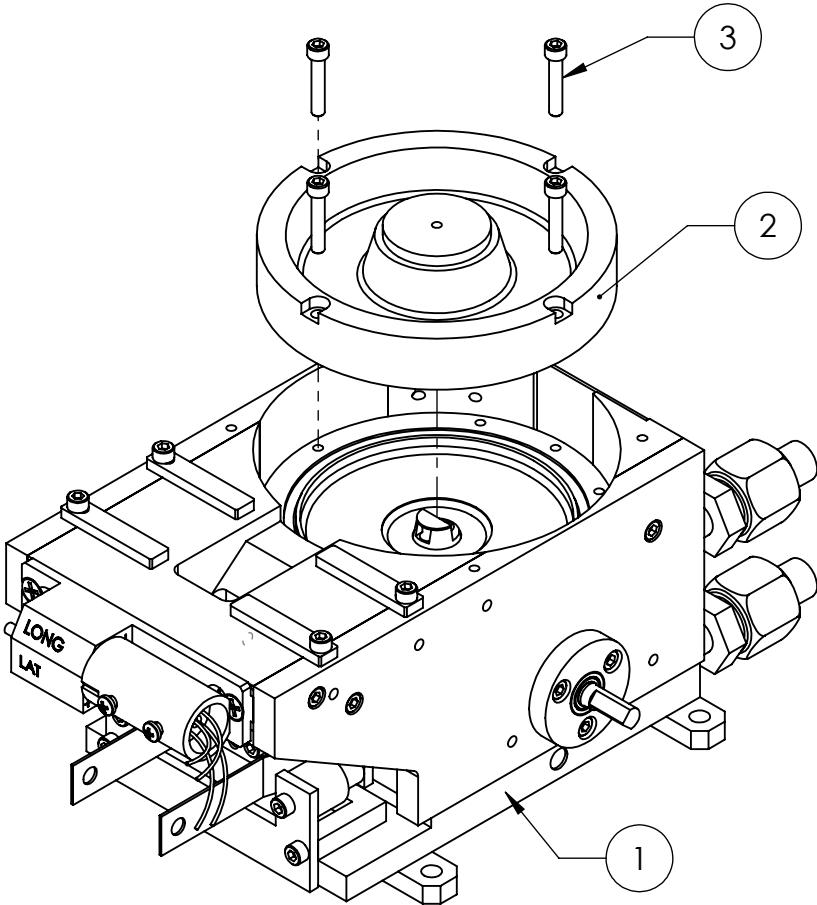
E

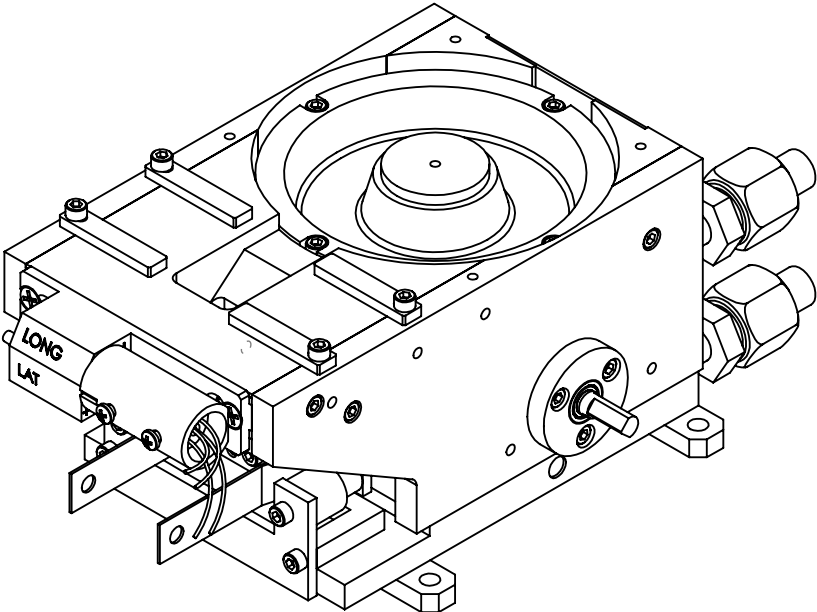
F

G

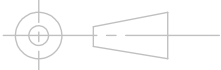
H

ECN	ZONE	REV	DESCRIPTION	BY	DATE
		A	RELEASE	PWF	3/17/2011





ITEM NO.	PART NUMBER	DESCRIPTION	244-9915-1/QTY.
1	244-0133-1	MODEL 244 SUB ASSEMBLY, SIDE DRIVE	1
2	244-0270-1	CRUCIBLE, TROUGH, 45cc	1
3	271-6072-1	VENTED SCREW, #6-32 X 3/4" SST. SHCS.	4

UNLESS OTHERWISE SPECIFIED GLOBAL TOLERANCES		DWG BY	DATE	MATERIAL:	B.O.M
		CHECK BY	DATE		
		PROJ ENG	DATE	FINISH:	
		MFG ENG	DATE	THIRD ANGLE PROJECTION	
		DO NOT SCALE DRAWING			
		FILE NUMBER - 244-99xx-1			
		INITIAL PROJECT - 244			

INCHES [mm]
.X +/- .03 [0.762]
.XX +/- 0.01 [0.254]
.XXX +/- 0.005 [0.127]

ANGLES +/- .5°
SURF FINISH 63 RMS

CONFIDENTIAL. This document contains proprietary data of TELEMAR and is not to be copied or distribetd without the prior written consent of TELEMAR. The receipt or possession of the document does not convey any rights to reproduce it, disclose its contents, or to manufacture, use or sell anything incorporating the conepts and details disclosed by it. Such concepts anddetails are not to be used other than for the benefit of TELEMAR and are not to be disclosed to others without the prior written consent of an officer of TELEMAR.

TELEMAR

telemark.com

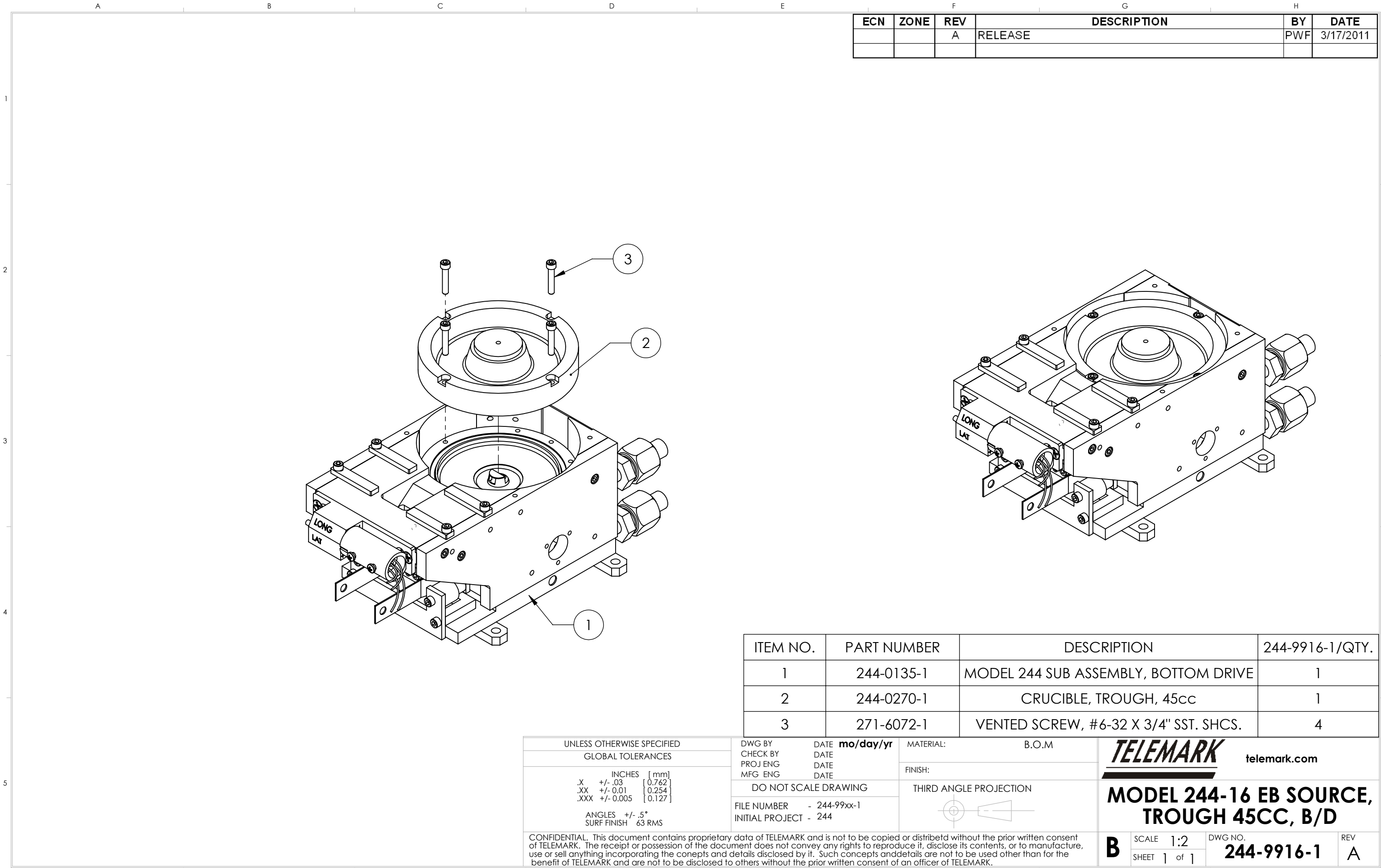
MODEL 244-15 EB SOURCE,
TROUGH 45CC, S/D

B

SCALE 1:2
SHEET 1 of 1

DWG NO.
244-9915-1

REV
A



1

2

3

4

5

ECN

ZONE

REV

DESCRIPTION

BY

DATE

1

4

5

3

2

LONG

LAT

ITEM NO.

PART NUMBER

DESCRIPTION

244-9927-1/QTY.

1

244-0073-1

COVER, 4 POCKET

1

2

244-0133-1

MODEL 244 SUB ASSEMBLY, SIDE DRIVE

1

3

244-0245-1

CRUCIBLE, 4X7cc

1

4

271-6050-1

VENTED SCREW, #6-32 X 3/8" SST. SHCS

4

5

271-6073-1

VENTED SCREW, #6-32 X 7/8" SST. SHCS.

4

UNLESS OTHERWISE SPECIFIED

GLOBAL TOLERANCES

INCHES

[mm]

.X

+/- .03

[0.762]

.XX

+/- 0.01

[0.254]

.XXX

+/- 0.005

[0.127]

ANGLES

+/- .5°

SURF FINISH

63 RMS

DWG BY

CHECK BY

PROJ ENG

MFG ENG

DATE

DATE

DATE

DATE

mo/day/yr

MATERIAL:

B.O.M

FINISH:

THIRD ANGLE PROJECTION

FILE NUMBER

- 244-99xx-1

INITIAL PROJECT

- 244

TELEMARK

telemark.com

MODEL 244-27 EB SOURCE,

4 PKT, 7CC, S/D

CONFIDENTIAL. This document contains proprietary data of TELEMARK and is not to be copied or distribetd without the prior written consent of TELEMARK. The receipt or possession of the document does not convey any rights to reproduce it, disclose its contents, or to manufacture, use or sell anything incorporating the conepts and details disclosed by it. Such concepts andndetails are not to be used other than for the benefit of TELEMARK and are not to be disclosed to others without the prior written consent of an officer of TELEMARK.

B

SCALE

1:2

SHEET

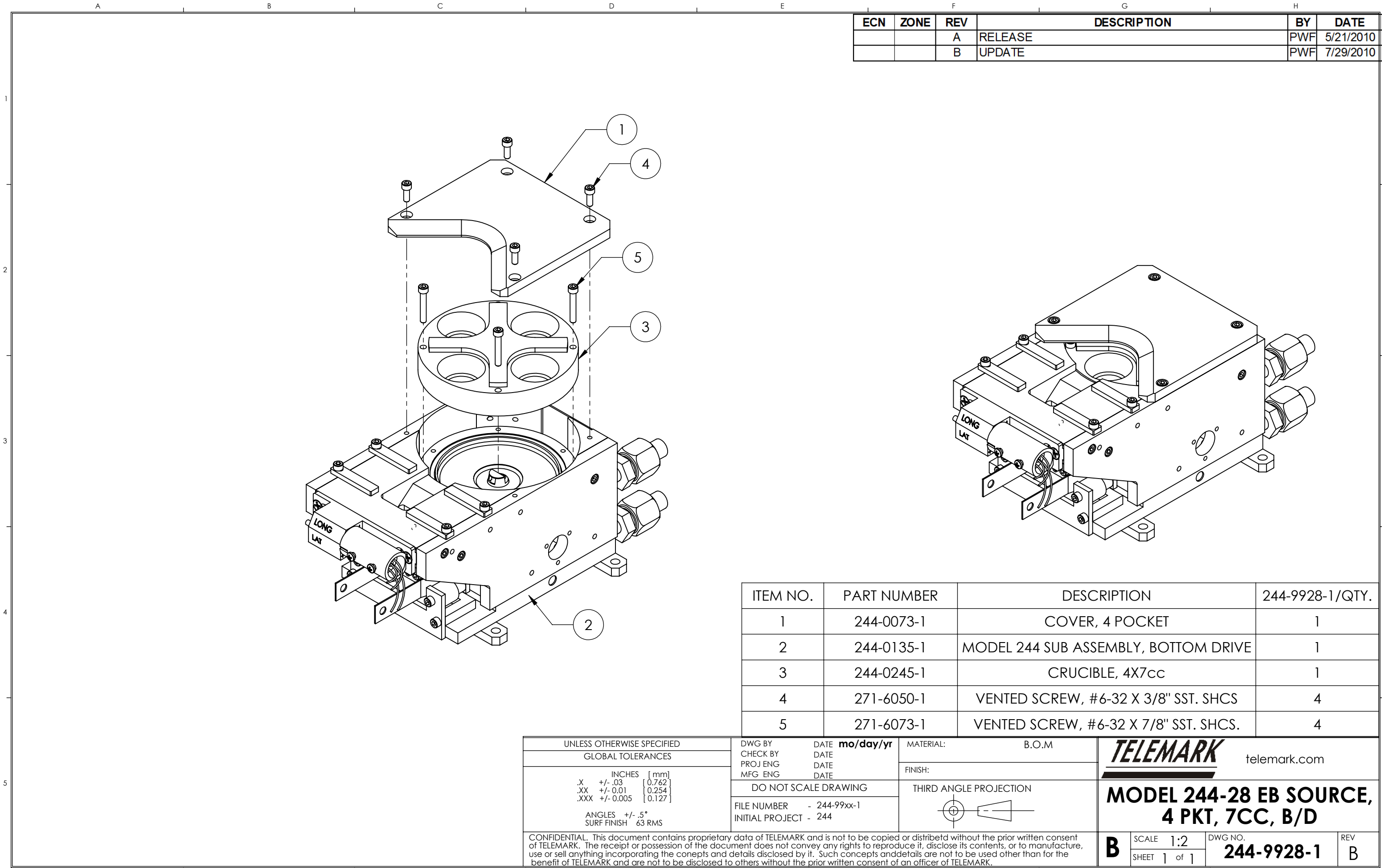
1 of 1

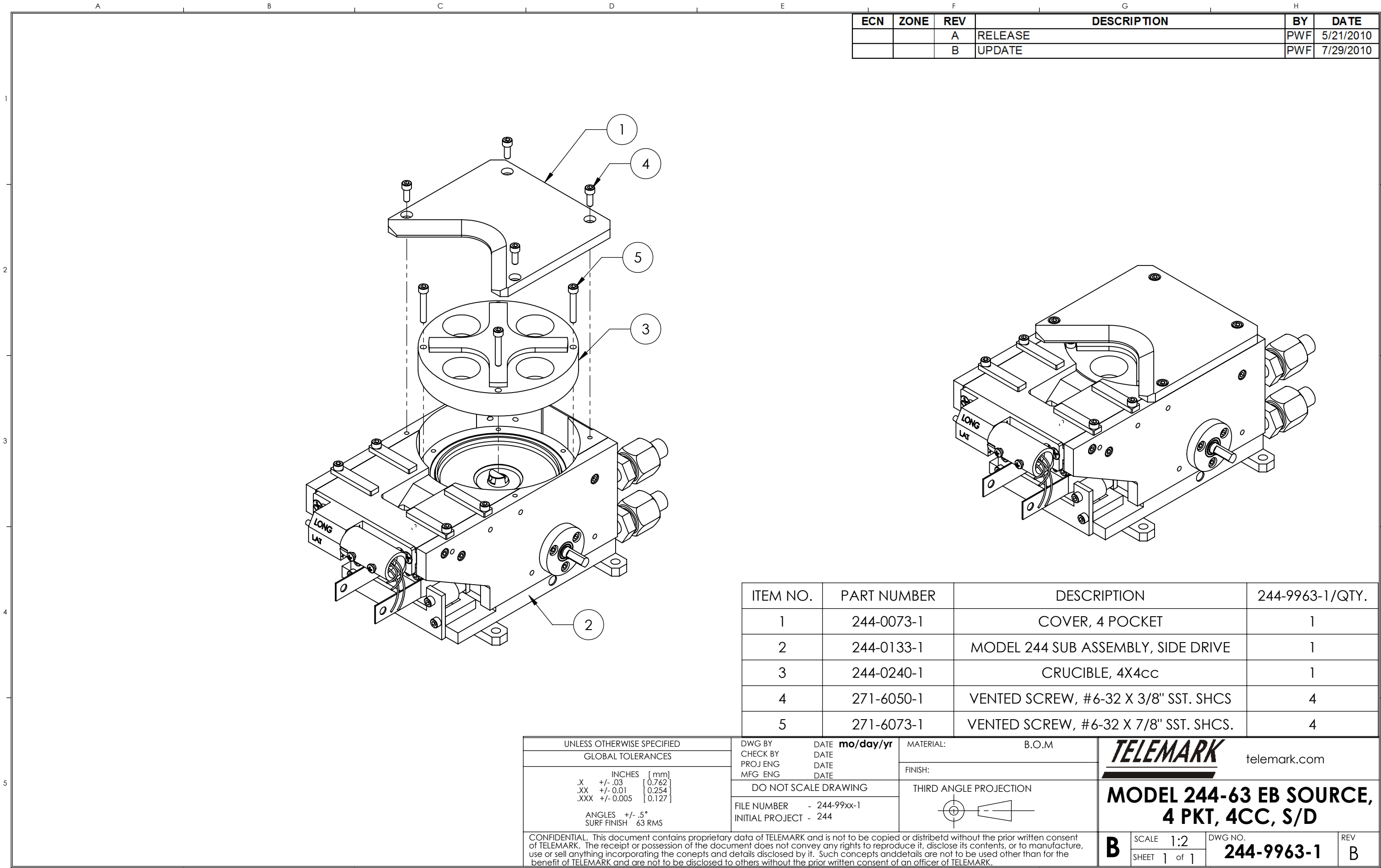
DWG NO.

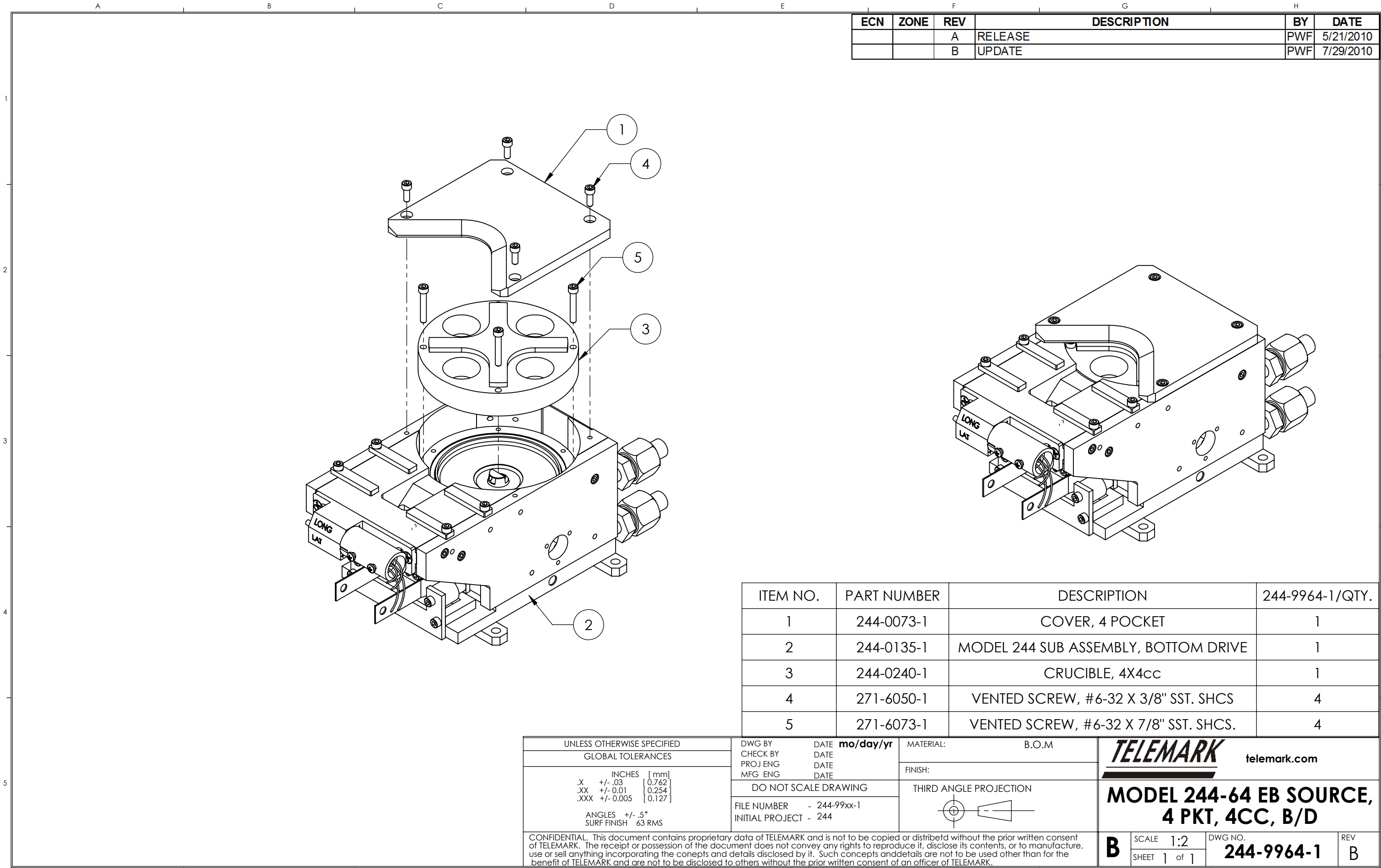
244-9927-1

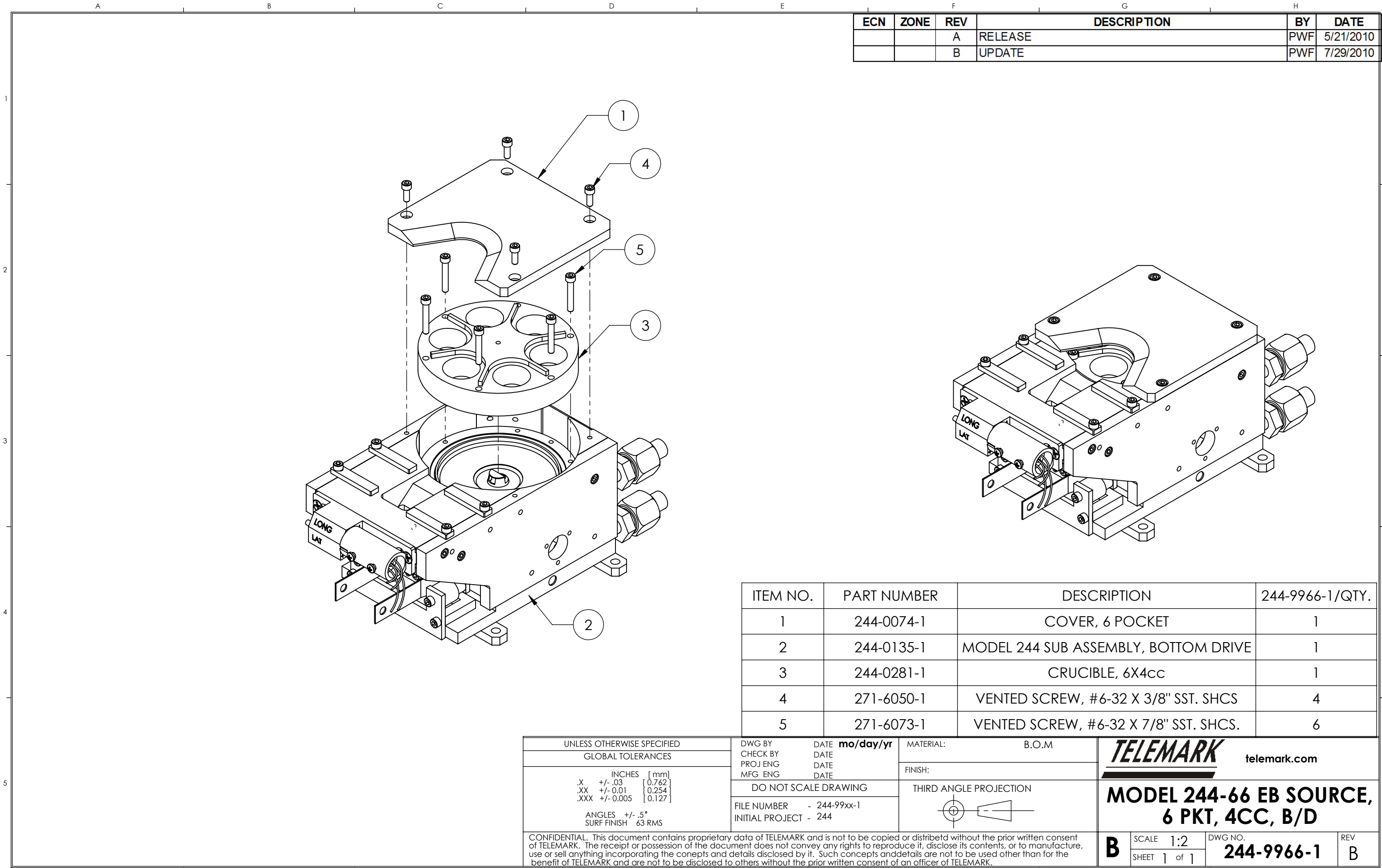
REV

B











Common Assemblies

E-Beam Source

1

2

3

4

5

ECN

ZONE

REV

DESCRIPTION

BY

DATE

1

2

3

4

5

1

2

3

4

5

UNLESS OTHERWISE SPECIFIED

GLOBAL TOLERANCES

INCHES

[mm]

.X

+/- .03

[0.762]

.XX

+/- 0.01

[0.254]

.XXX

+/- 0.005

[0.127]

ANGLES

+/- .5°

SURF FINISH

63 RMS

DWG BY

CHECK BY

PROJ ENG

MFG ENG

DATE

DATE

DATE

DATE

DO NOT SCALE DRAWING

FILE NUMBER

INITIAL PROJECT

DATE

mo/day/yr

MATERIAL:

B.O.M

FINISH:

SEE NOTES

THIRD ANGLE PROJECTION

TELEMARK

telemark.com

SIDE DRIVE ASSY.

B

SCALE

1:1

SHEET

1

of

1

DWG NO.

244-0125-1

REV

B

CONFIDENTIAL. This document contains proprietary data of TELEMARK and is not to be copied or distribetd without the prior written consent of TELEMARK. The receipt or possession of the document does not convey any rights to reproduce it, disclose its contents, or to manufacture, use or sell anything incorporating the conepts and details disclosed by it. Such concepts andndetails are not to be used other than for the benefit of TELEMARK and are not to be disclosed to others without the prior written consent of an officer of TELEMARK.

A

B

C

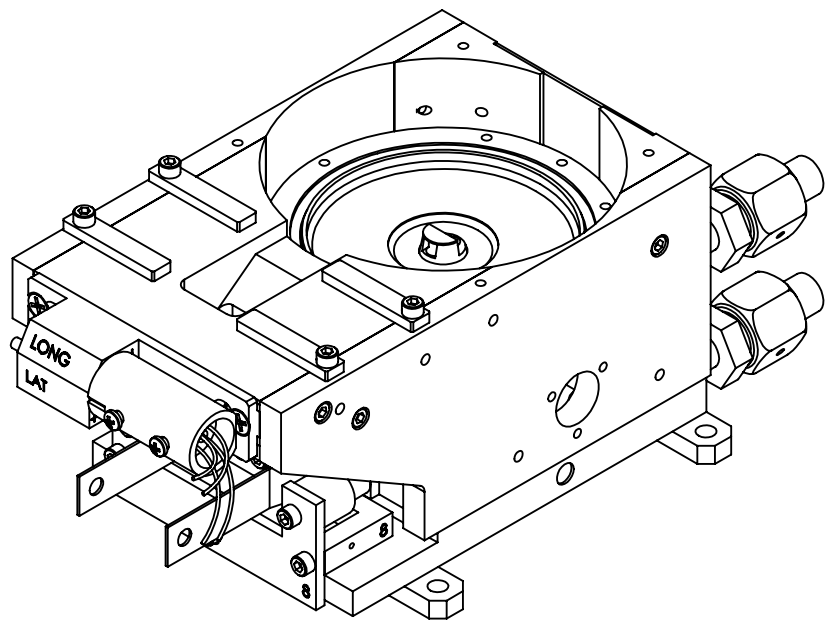
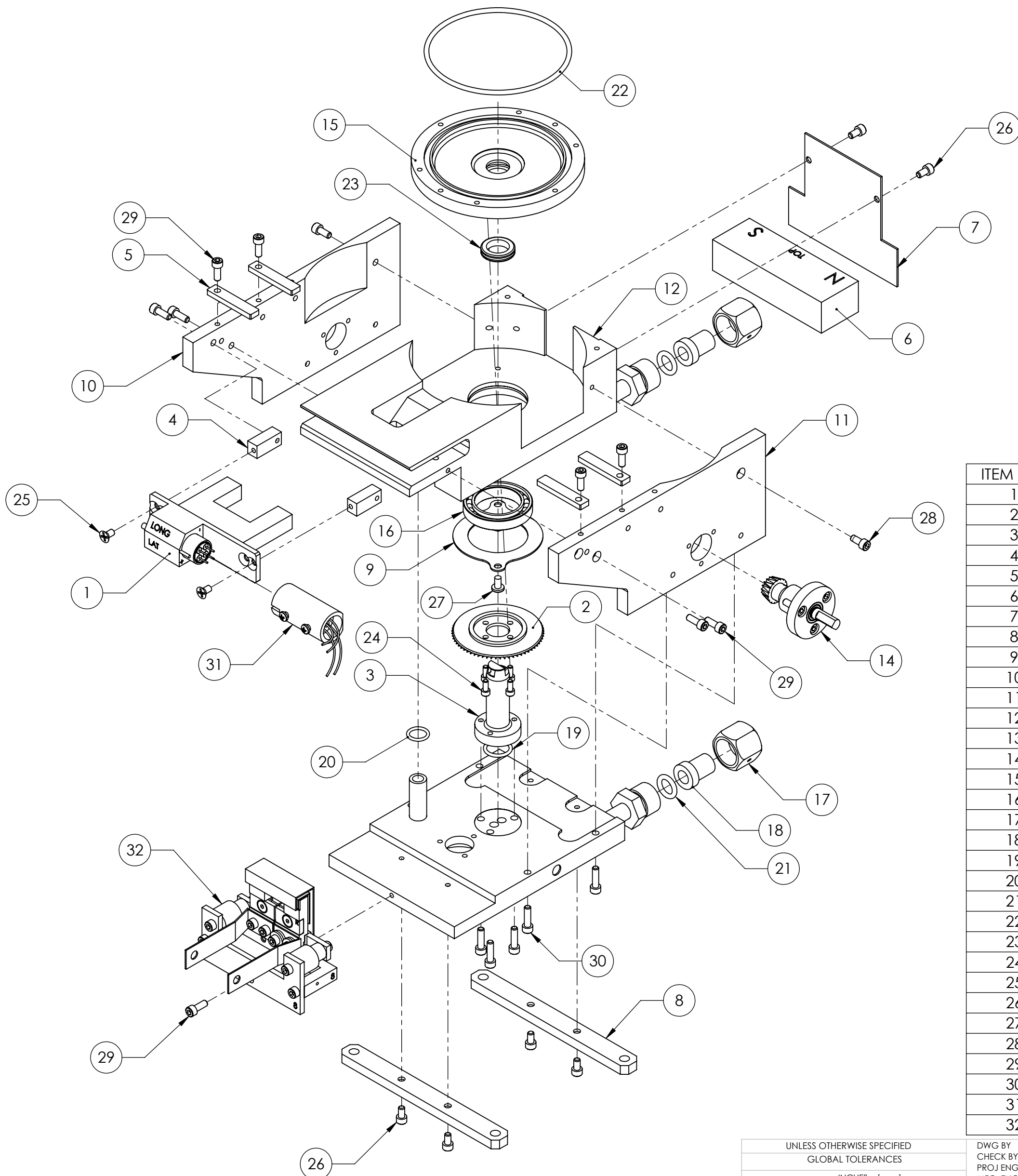
D

E

F

G

ECN	ZONE	REV	DESCRIPTION	BY	DATE
		A	RELEASE	PWF	5/19/2010
		B	UPDATE	PWF	6/7/2010
		C	CHANGE EMITTER TO 273-0150-8	PWF	8/21/2013



ITEM NO.	PART NUMBER	DESCRIPTION	244-0133-1/QTY.
1	212-0080-1	COIL ASSEMBLY	1
2	241-0013-1	BEVEL GEAR, 64T	1
3	241-0042-1	PIVOT SHAFT	1
4	241-0047-1	COIL BLOCK	2
5	241-0053-3	POLE PIECE	4
6	241-0055-1	PERMANENT MAGNET	1
7	241-0084-1	REAR SHIELD	1
8	241-0088-1	MOUNTING STRAP	2
9	241-0656-1	BEARING STRAP	1
10	244-0058-1	MAGNET ARM, LEFT	1
11	244-0059-1	MAGNET ARM, RIGHT	1
12	244-0111-2	MAIN BLOCK, BRAZE ASSY.	1
13	244-0112-2	WELDMENT, 242 BASE PLATE	1
14	244-0125-1	SIDE DRIVE ASSY.	1
15	244-0442-2	CRUCIBLE BASE	1
16	271-0035-1	BEARING SS	1
17	271-0650-2	WATER FITTING NUT	2
18	271-0651-2	WATER FITTING GLAND	2
19	271-2014-1	O-RING, VITON, ID 1/2", W 1/16"	1
20	271-2010-1	O-RING, VITON, ID 1/4", W 1/16"	1
21	271-2110-1	O-RING, VITON, ID 3/8", W 3/32"	2
22	271-2151-1	O-RING, VITON, ID 3", W 3/32"	1
23	271-4206-1	QUAD RING, VITON, ID 1/2", W 1/8"	1
24	271-5999-1	VENTED SCREW, #4-40 X 1/4" SST SHCS	4
25	271-6010-1	VENTED SCREW, #6-32 X 1/4" SST FLAT HEAD	2
26	271-6030-1	VENTED SCREW, #6-32 X 1/4" SST SHCS	6
27	271-6030-8	VENTED SCREW, #6-32 X 1/4" SST BHCS	2
28	271-6040-1	VENTED SCREW, #6-32 X 5/16 SST SHCS	2
29	271-6050-1	VENTED SCREW, #6-32 X 3/8" SST. SHCS	9
30	271-6060-1	VENTED SCREW, #6-32 X 1/2" SST SHCS	7
31	272-0125-2	COIL CONNECTOR ASSEMBLY	1
32	273-0150-8	EMITTER ASSEMBLY	1

UNLESS OTHERWISE SPECIFIED GLOBAL TOLERANCES	
X	+/- .03 [0.762]
.XX	+/- 0.01 [0.254]
.XXX	+/- 0.005 [0.127]
ANGLES +/- .5°	
SURF FINISH .63 RMS	

DWG BY	DATE	mo/day/yr
CHECK BY	DATE	
PROJ ENG	DATE	
MFG ENG	DATE	
DO NOT SCALE DRAWING		
FILE NUMBER - 244-013x-1		
INITIAL PROJECT - 244		

MATERIAL: B.O.M	
FINISH:	
THIRD ANGLE PROJECTION	

TELEMARK		telemark.com
MODEL 244 SUB ASSEMBLY SIDE DRIVE		
SCALE 1:2	DWG NO. 244-0133-1	REV C
SHEET 1 of 1		

CONFIDENTIAL. This document contains proprietary data of TELEMARK and is not to be copied or distributed without the prior written consent of TELEMARK. The receipt or possession of the document does not convey any rights to reproduce it, disclose its contents, or to manufacture, use or sell anything incorporating the concepts and details disclosed by it. Such concepts and details are not to be used other than for the benefit of TELEMARK and are not to be disclosed to others without the prior written consent of an officer of TELEMARK.

A

B

C

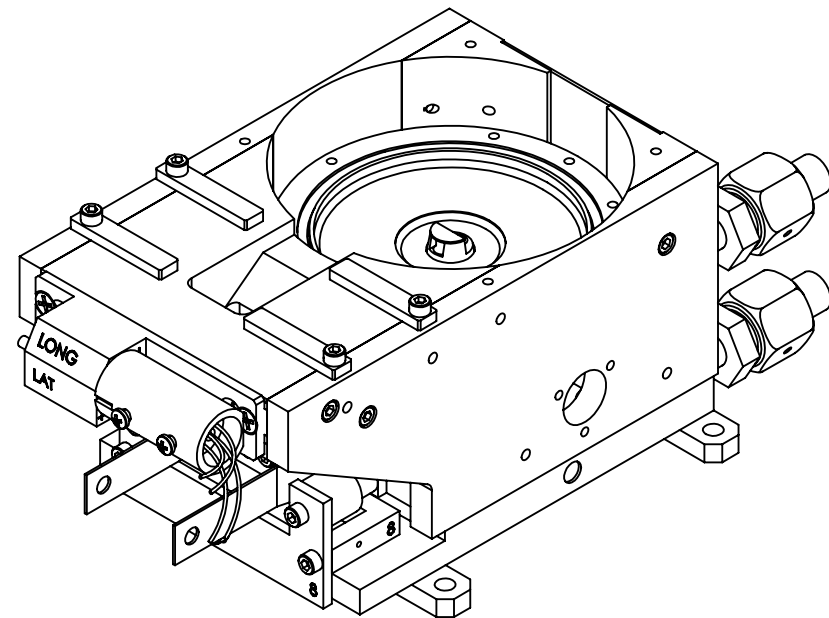
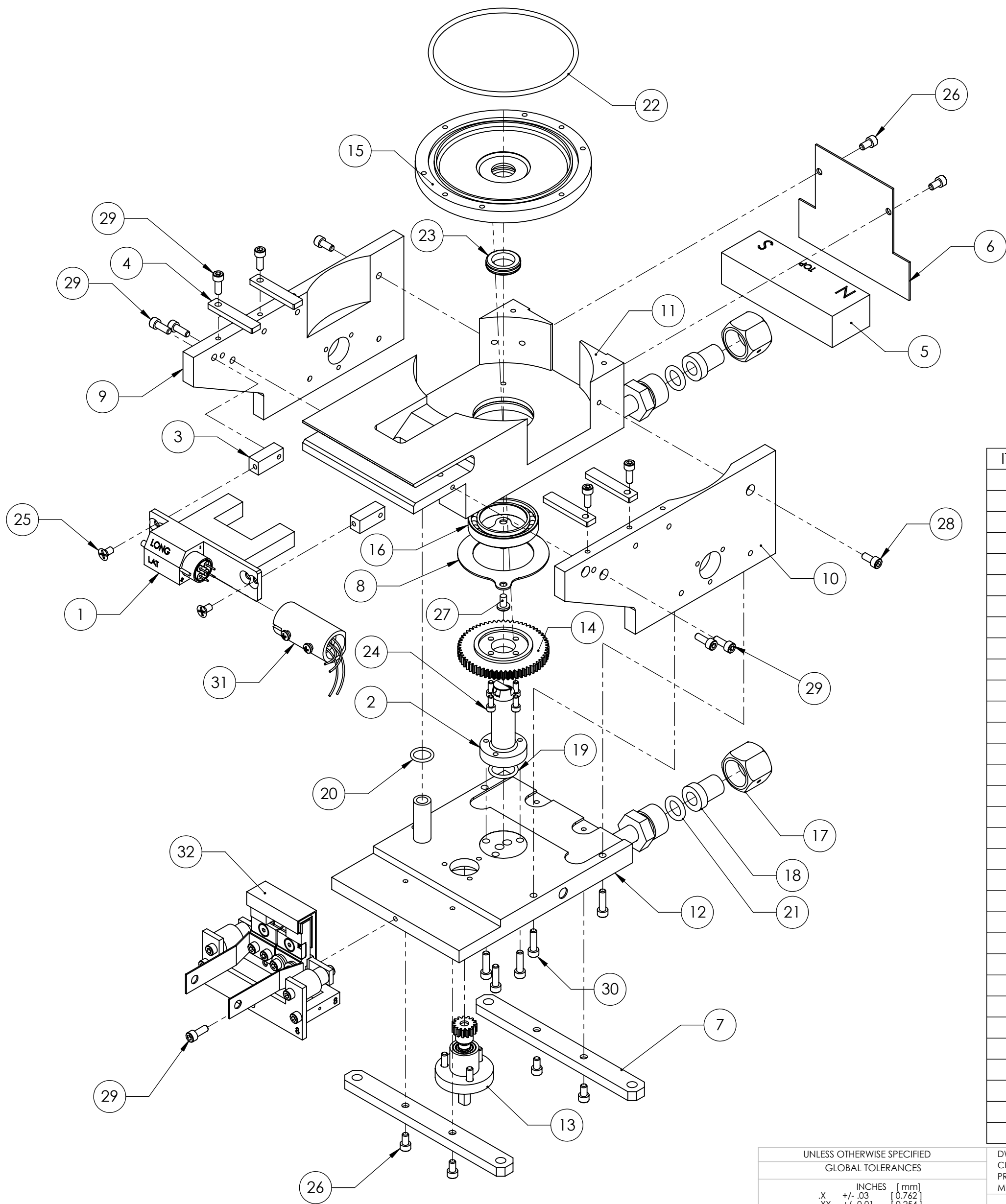
D

E

F

G

ECN	ZONE	REV	DESCRIPTION	BY	DATE
		A	RELEASE	PWF	5/19/2010
		B	UPDATE	PWF	6/7/2010
		C	CHANGE EMITTER TO 273-0150-8	PWF	8/21/2013



ITEM NO.	PART NUMBER	DESCRIPTION	244-0135-1/QTY.
1	212-0080-1	COIL ASSEMBLY	1
2	241-0042-1	PIVOT SHAFT	1
3	241-0047-1	COIL BLOCK	2
4	241-0053-3	POLE PIECE	4
5	241-0055-1	PERMANENT MAGNET	1
6	241-0084-1	REAR SHIELD	1
7	241-0088-1	MOUNTING STRAP	2
8	241-0656-1	BEARING STRAP	1
9	244-0058-1	MAGNET ARM, LEFT	1
10	244-0059-1	MAGNET ARM, RIGHT	1
11	244-0111-2	MAIN BLOCK, BRAZE ASSY.	1
12	244-0112-2	WELDMENT, 242 BASE PLATE	1
13	244-0127-1	BOTTOM DRIVE ASSY.	1
14	244-0149-1	SPUR GEAR, 60T	1
15	244-0442-2	CRUCIBLE BASE	1
16	271-0035-1	BEARING SS	1
17	271-0650-2	WATER FITTING NUT	2
18	271-0651-2	WATER FITTING GLAND	2
19	271-2014-1	O-RING, VITON, ID 1/2", W 1/16"	1
20	271-2010-1	O-RING, VITON, ID 1/4", W 1/16"	1
21	271-2110-1	O-RING, VITON, ID 3/8", W 3/32"	2
22	271-2151-1	O-RING, VITON, ID 3", W 3/32"	1
23	271-4206-1	QUAD RING, VITON, ID 1/2", W 1/8"	1
24	271-5999-1	VENTED SCREW, #4-40 X 1/4" SST SHCS	4
25	271-6010-1	VENTED SCREW, #6-32 X 1/4" SST FLAT HEAD	2
26	271-6030-1	VENTED SCREW, #6-32 X 1/4" SST SHCS	6
27	271-6030-8	VENTED SCREW, #6-32 X 1/4" SST BHCS	2
28	271-6040-1	VENTED SCREW, #6-32 X 5/16 SST SHCS	2
29	271-6050-1	VENTED SCREW, #6-32 X 3/8" SST. SHCS	9
30	271-6060-1	VENTED SCREW, #6-32 X 1/2" SST SHCS	7
31	272-0125-2	COIL CONNECTOR ASSEMBLY	1
32	273-0150-8	EMITTER ASSEMBLY	1

UNLESS OTHERWISE SPECIFIED
GLOBAL TOLERANCES

	INCHES	[mm]
X	+/- .03	[0.762]
.XX	+/- .01	[0.254]
.XXX	+/- .005	[0.127]

ANGLES +/- .5°
SURF FINISH .63 RMSDWG BY
CHECK BY
PROJ ENG
MFG ENGDATE
DATE
DATE

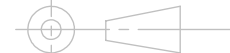
DO NOT SCALE DRAWING

FILE NUMBER - 244-013x-1
INITIAL PROJECT - 244

MATERIAL: B.O.M.

FINISH:

THIRD ANGLE PROJECTION

**TELEMARK**

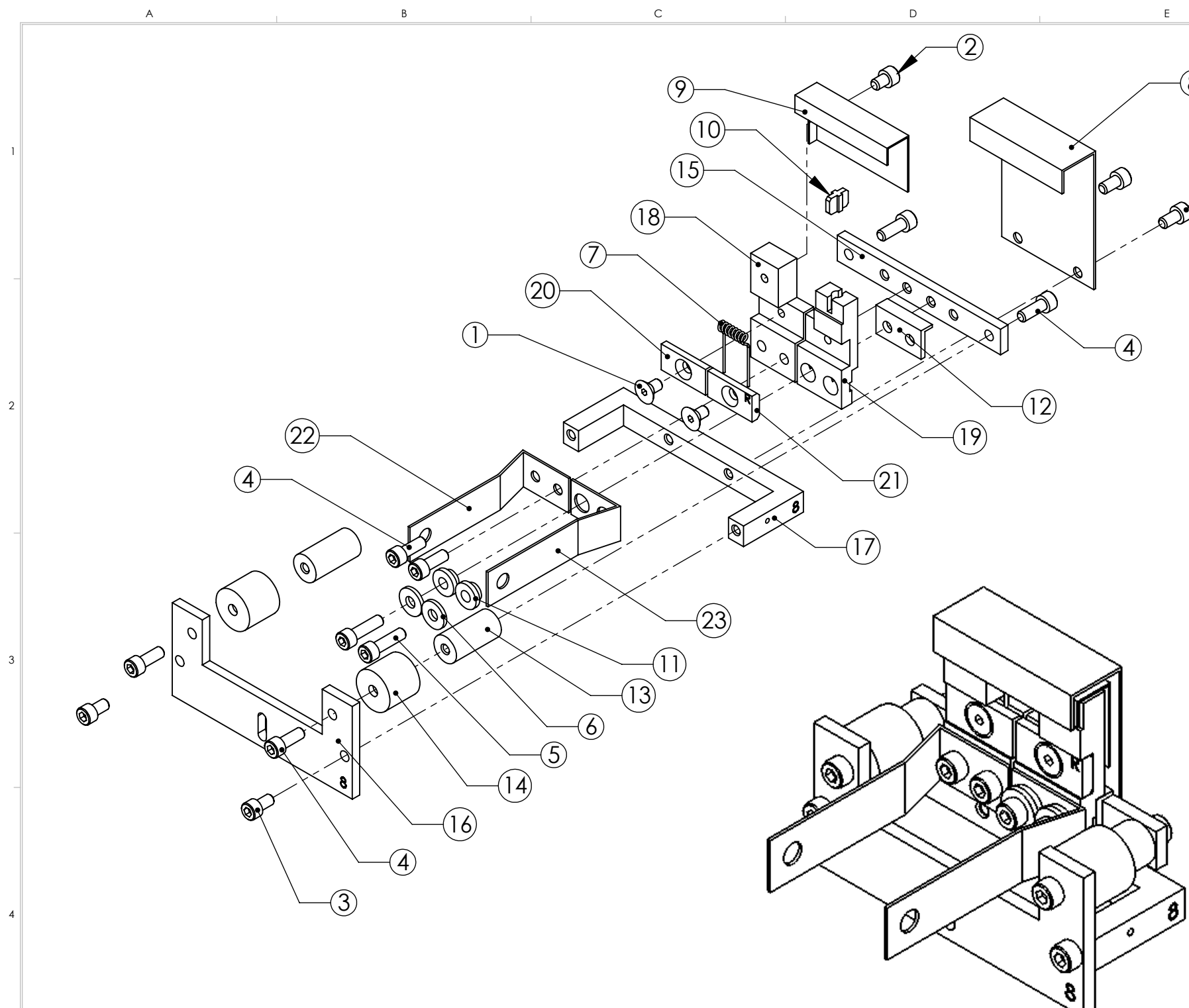
telemark.com

**MODEL 244 SUB ASSEMBLY
BOTTOM DRIVE**SCALE 1:2
SHEET 1 of 1

DWG NO. 244-0135-1

REV C

CONFIDENTIAL. This document contains proprietary data of TELEMARK and is not to be copied or distributed without the prior written consent of TELEMARK. The receipt or possession of the document does not convey any rights to reproduce it, disclose its contents, or to manufacture, use or sell anything incorporating the concepts and details disclosed by it. Such concepts and details are not to be used other than for the benefit of TELEMARK and are not to be disclosed to others without the prior written consent of an officer of TELEMARK.



ISOMETRIC VIEW

ECN	ZONE	REV	DESCRIPTION	BY	DATE
		A	RELEASE	PWF	6/13/2013
		A1	UPDATE	PWF	8/9/2013

ITEM NO.	PART NUMBER	DESCRIPTION	QTY.
1	271-6010-5	SCREW, #6-32 X 1/4" SLOT FLAT HEAD,TI	2
2	271-6020-5	SCREW, #6-32 X 3/16" TI SHCS	1
3	271-6030-1	VENTED SCREW, #6-32 X 1/4" SST SHCS	4
4	271-6050-1	VENTED SCREW, #6-32 X 3/8" SST. SHCS	6
5	271-6060-1	VENTED SCREW, #6-32 X 1/2" SST SHCS	2
6	271-6242-1	FLAT WASHER, #6 SST.	2
7	273-0001-1	FILAMENT, 7-1/2 TURN	1
8	273-0003-1	ANODE PLATE	1
9	273-0004-2	BEAM FORMER	1
10	273-0005-1	INSULATOR, CROSS	1
11	273-0006-1	INSULATOR, COLLAR	2
12	273-0008-1	L INSULATOR	1
13	273-0010-1	HV INSULATOR	2
14	273-0011-1	HV SHIELD	2
15	273-0017-1	MOUNTING BRACKET	1
16	273-0018-8	EMITTER SUPPORT BRACKET	1
17	273-0019-8	U-BRACKET	1
18	273-0031-1	CATHODE BLOCK, LEFT	1
19	273-0032-1	CATHODE BLOCK, RIGHT	1
20	273-0033-3	FILAMENT CLAMP, LEFT	1
21	273-0033-4	FILAMENT CLAMP, RIGHT	1
22	273-0035-1	EMITTER BUS BAR, LEFT	1
23	273-0036-1	FILAMENT BUS BAR, RIGHT	1

UNLESS OTHERWISE SPECIFIED
GLOBAL TOLERANCES

	INCHES	[mm]
.X	+/- .03	[0.762]
.XX	+/- 0.01	[0.254]
.XXX	+/- 0.005	[0.127]

ANGLES +/- .5°
SURF FINISH 63 RMS

DWG BY
CHECK BY
PROJ ENG
MFG ENG

DATE
DATE
DATE

DO NOT SCALE DRAWING

FILE NUMBER - 273-0150-8
INITIAL PROJECT -

MATERIAL: B.O.M.

FINISH: SEE NOTES

THIRD ANGLE PROJECTION

TELEMARK
telemark.com

**EMITTER ASSEMBLY
2013**

B

SCALE 1:1
SHEET 1 of 1

DWG NO.
273-0150-8

REV
A1

CONFIDENTIAL. This document contains proprietary data of TELEMARK and is not to be copied or distributed without the prior written consent of TELEMARK. The receipt or possession of the document does not convey any rights to reproduce it, disclose its contents, or to manufacture, use or sell anything incorporating the concepts and details disclosed by it. Such concepts and details are not to be used other than for the benefit of TELEMARK and are not to be disclosed to others without the prior written consent of an officer of TELEMARK.