

# **TELEMARK** 266 Multi Pocket E-Beam Source Drawings

The current version of this drawing pdf can be found at

<https://telemark.com/electron-beam-sources/multi-pocket-sources/>

Drawing	Rev.	Description	Page
<b>Reference Dimensions</b>			2
R266-1001	A1	Model 266 E-Beam Source Dimensions	3
<b>Model Assemblies</b>			5
266-9902-2	A	Model 266-02 EB Source, 4 pkt, 15cc	6
266-9906-2	A	Model 266-06 EB Source, 6 pkt, 7cc	7
266-9908-2	A	Model 266-08 EB Source, 4 pkt, 25cc	8
266-9912-2	A	Model 266-12 EB Source, 6 pkt, 15cc	9
266-9914-2	B	Model 266-14 EB Source, 8 pkt, 7cc	10
266-9916-2	A	Model 266-16 EB Source, Trough 190cc	11
266-9920-2	A	Model 266-20 EB Source, 4 pkt, 30cc	12
266-9928-2	A	Model 266-28 EB Source, 4 pkt, 7cc	13
266-9956-2	A	Model 266-56 EB Source, Pan, 208cc	14
<b>Common Assemblies</b>			15
266-1135-1	C	EB Source Sub Assembly	16
267-0140-1	C	External Assembly	17
267-0140-3	A	External Assembly, 8 pocket	18
267-9025-1	B	Manual Drive Assembly	19
274-0150-1	F	Emitter Assy, 7-1/2 Turn Filament, -8	20
<b>Option - Arc Suppression</b>			21
266-5175-1	C	266 Arc Supression	22
291-3151-1	C	Arc Supression Emitter	23



# Reference Dimensions

## **E-Beam Source**

A

B

C

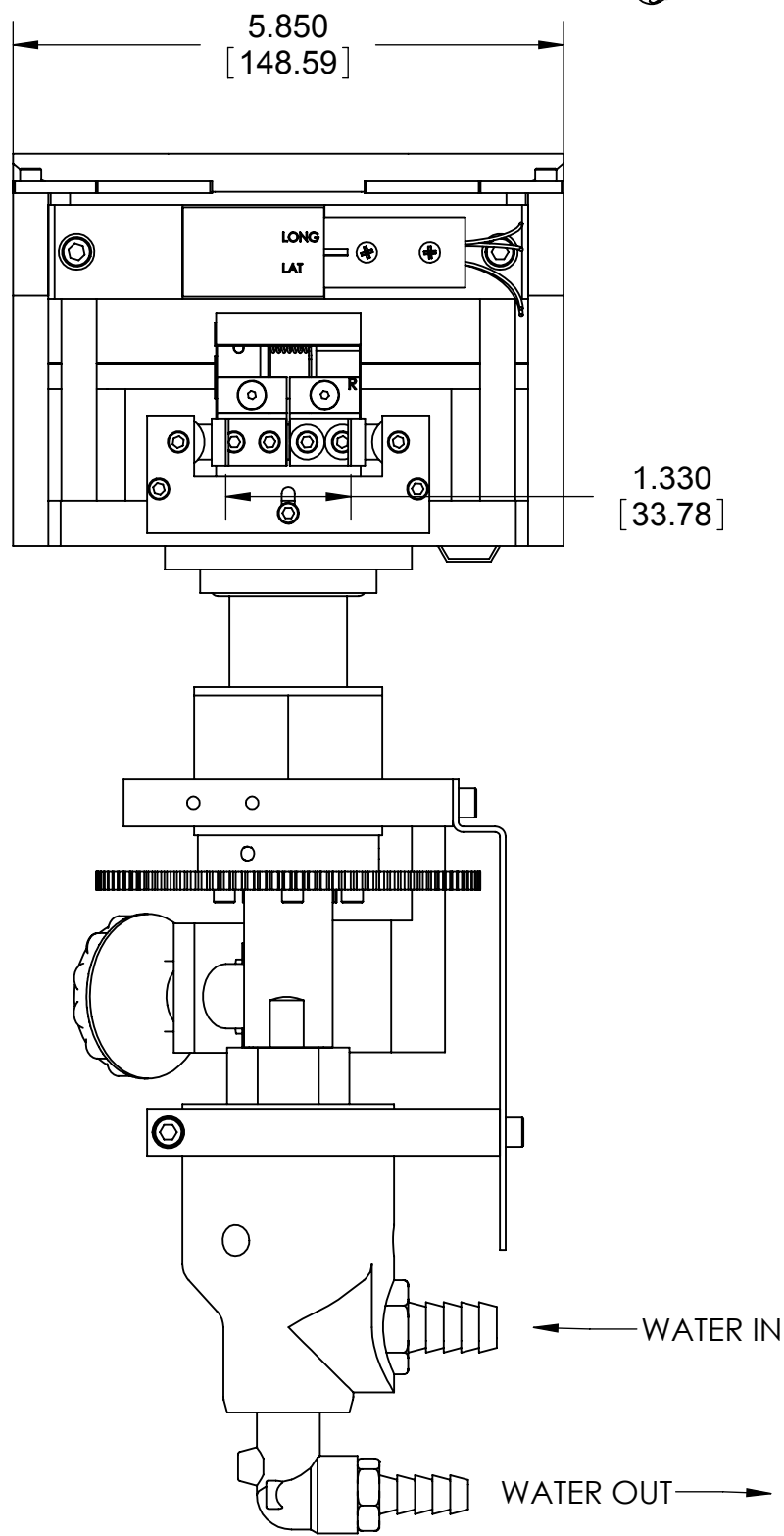
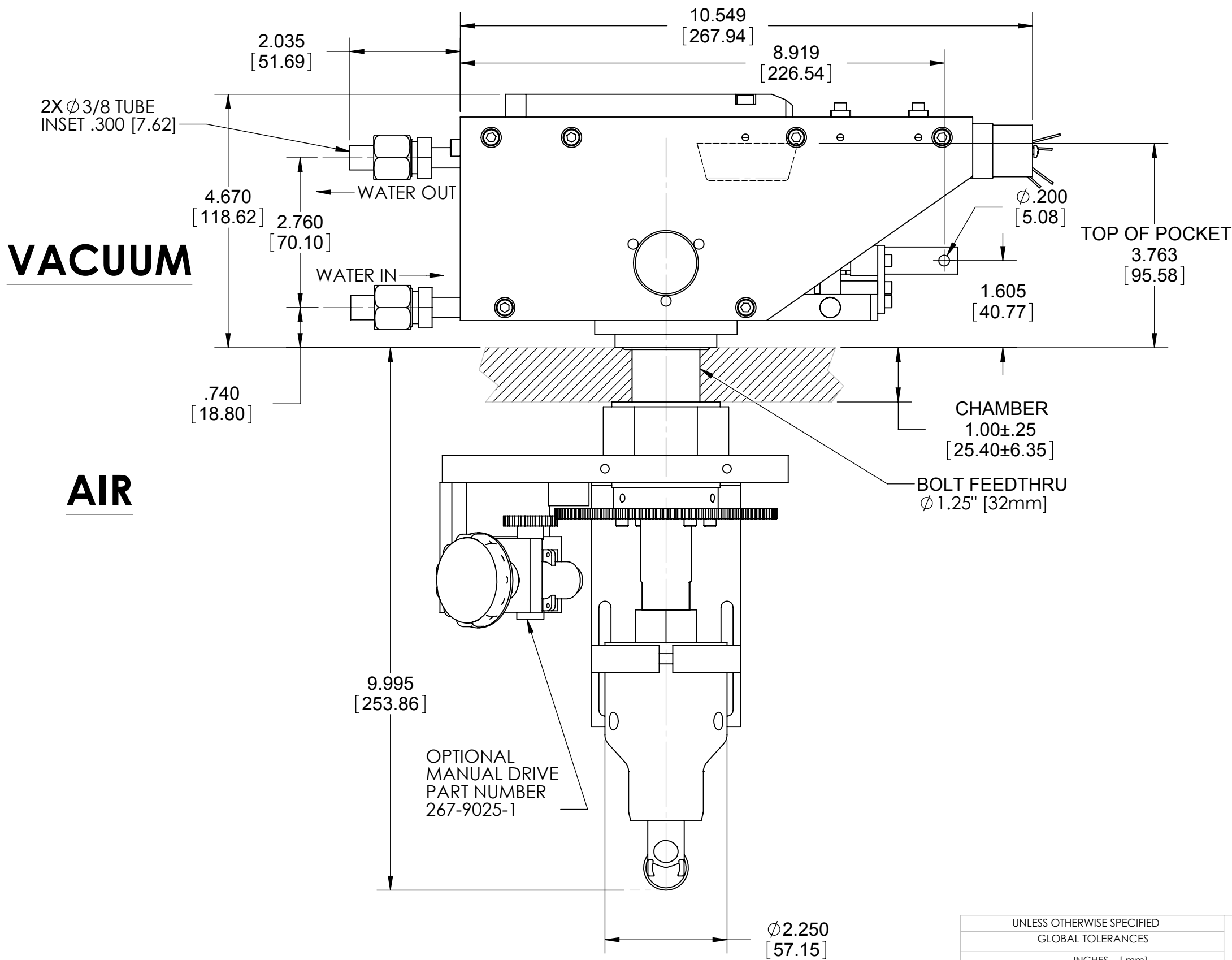
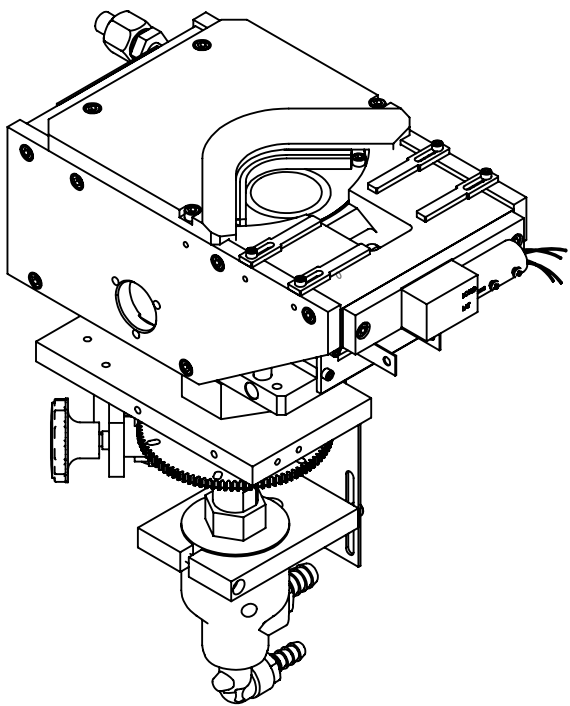
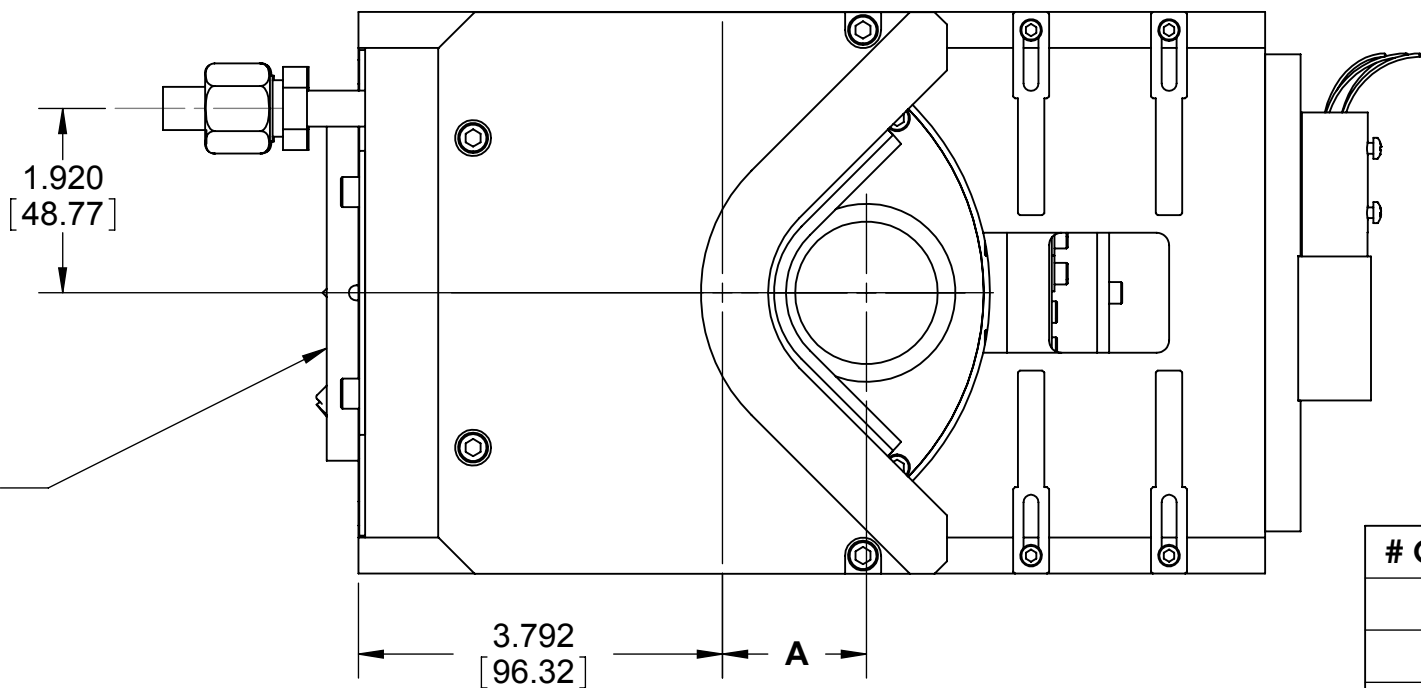
D

E


F

G

ECN	ZONE	REV	DESCRIPTION	BY	DATE
		A	RELEASE	PWF	5/11/2010
		A1	UPDATE	PWF	5/3/2011



INCH [mm]

UNLESS OTHERWISE SPECIFIED			DWG BY	DATE	<b>TELEMARK</b> telemark.com
GLOBAL TOLERANCES			CHECK BY	DATE	
			PROJ ENG	DATE	
			MFG ENG	DATE	
X INCHES [mm] +/- .03 [0.762] .XX +/- 0.01 [0.254] .XXX +/- 0.005 [0.127]			DO NOT SCALE DRAWING		THIRD ANGLE PROJECTION 
ANGLES +/- .5° SURF FINISH 63 RMS			FILE NUMBER - 266-1135-1		
			INITIAL PROJECT -		
CONFIDENTIAL. This document contains proprietary data of TELEMARK and is not to be copied or distributed without the prior written consent of TELEMARK. The receipt or possession of the document does not convey any rights to reproduce it, disclose its contents, or to manufacture, use or sell anything incorporating the concepts and details disclosed by it. Such concepts and details are not to be used other than for the benefit of TELEMARK and are not to be disclosed to others without the prior written consent of an officer of TELEMARK.					
<b>C</b>	SCALE	1:2	DWG NO.		REV
	SHEET	1 of 2	<b>R266-1001</b>		
<b>MODEL 266 EB SOURCE</b>					

A

B

C

D

E

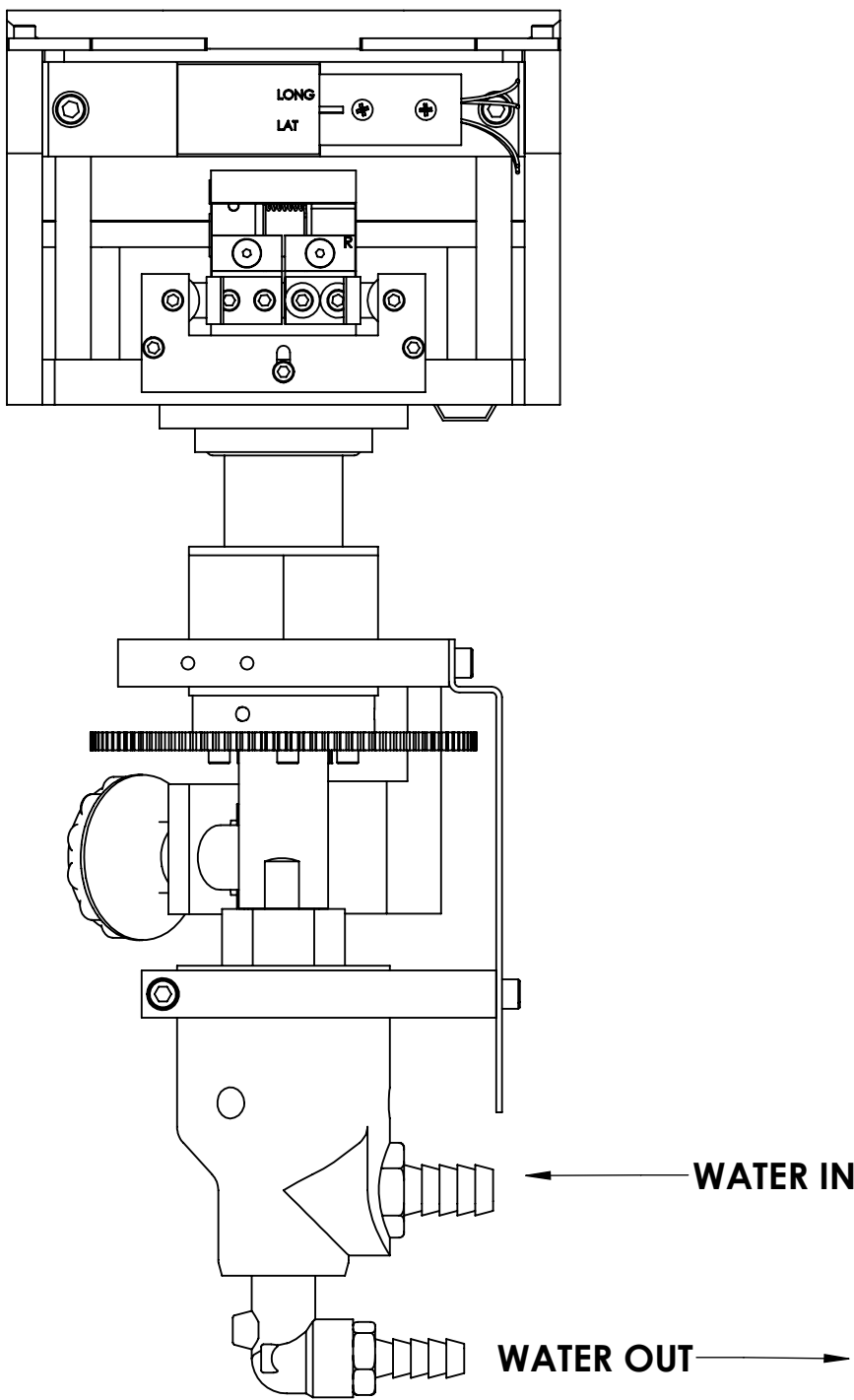
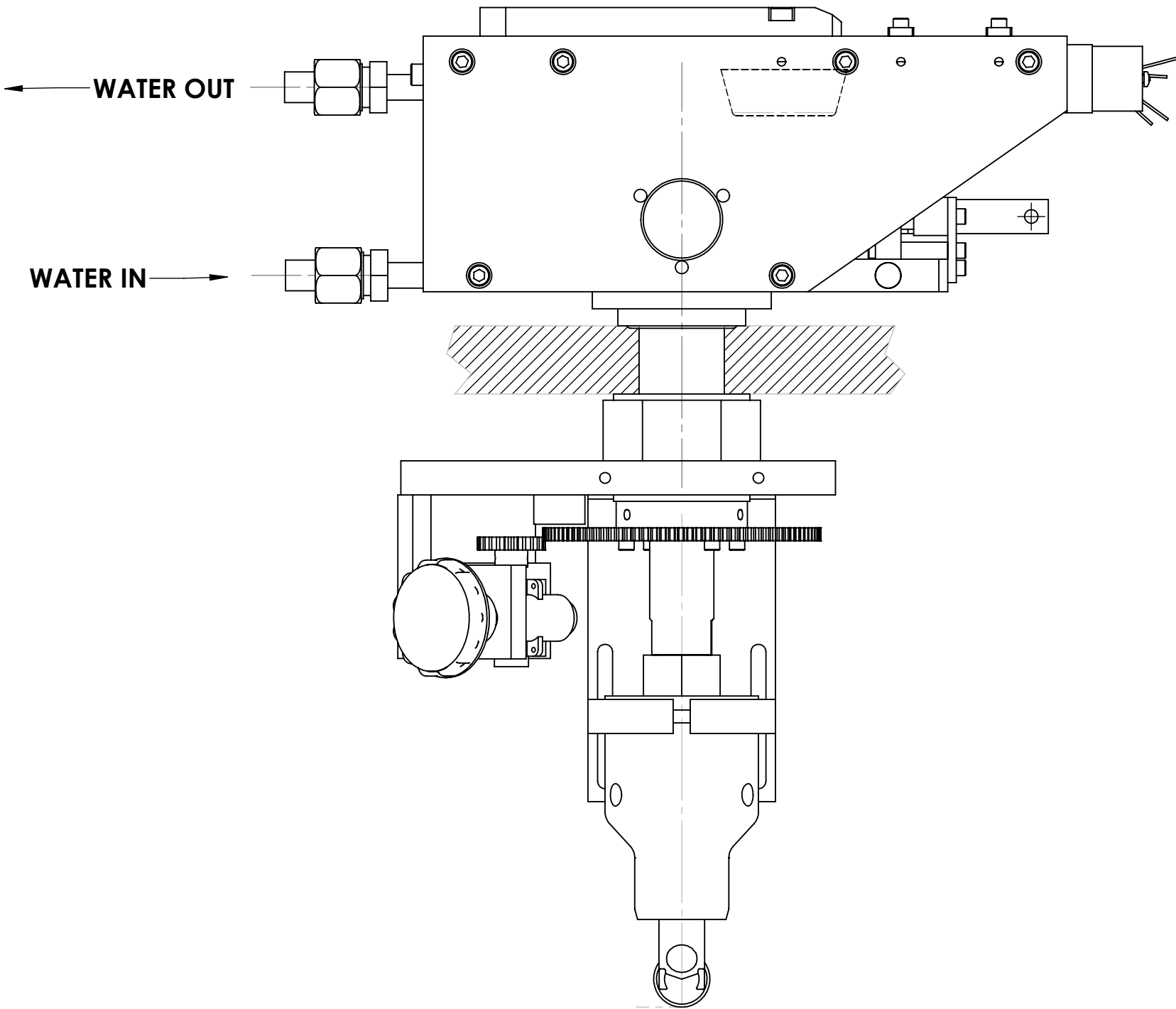
F


G

ECN	ZONE	REV	DESCRIPTION	BY	DATE
		A	RELEASE	PWF	5/11/2010
		A1	UPDATE	PWF	5/3/2011

# MODEL 266

## IMPORTANT WATER LINE CONNECTION INFORMATION



UNLESS OTHERWISE SPECIFIED		DWG BY	DATE	MATERIAL:	<b>TELEMARK</b>	telemark.com
GLOBAL TOLERANCES		CHECK BY	DATE			
		PROJ ENG	DATE			
		MFG ENG	DATE			
INCHES [mm]		DO NOT SCALE DRAWING		THIRD ANGLE PROJECTION		<b>MODEL 266 EB SOURCE</b>
.X +/- .03 [0.762]		FILE NUMBER - 266-1135-1				
.XX +/- .01 [0.254]		INITIAL PROJECT -				
.XXX +/- .005 [0.127]						
ANGLES +/- .5°						
SURF FINISH 63 RMS						
CONFIDENTIAL. This document contains proprietary data of TELEMARK and is not to be copied or distributed without the prior written consent of TELEMARK. The receipt or possession of the document does not convey any rights to reproduce it, disclose its contents, or to manufacture, use or sell anything incorporating the concepts and details disclosed by it. Such concepts and details are not to be used other than for the benefit of TELEMARK and are not to be disclosed to others without the prior written consent of an officer of TELEMARK.						
<b>C</b>	SCALE	1:2	DWG NO.	REV	<b>R266-1001</b>	<b>A1</b>
	SHEET	2 of 2				



# Model Assemblies

## **E-Beam Sources**

1

2

3

4

5

ECN	ZONE	REV	DESCRIPTION	BY	DATE
		A	RELEASE	PWF	5/21/2010

ITEM NO.	PART NUMBER	DESCRIPTION	266-9902-2/QTY.
1	264-0073-1	COVER, 4 POCKET	1
2	264-0264-1	CRUCIBLE, 4X 15CC	1
3	266-1135-1	266 EB SOURCE SUB ASSEMBLY	1
4	271-6131-4	VENTED SCREW, #8-32 x 1-1/2" SST. SHCS	4
5	271-6150-1	VENTED SCREW, #10-32 X 1/2" SST. SHCS	2
6	271-6170-1	VENTED SCREW, #10-32 X 5/8" SST. SHCS	2

UNLESS OTHERWISE SPECIFIED  
GLOBAL TOLERANCES

	INCHES	[mm]
.X	+/- .03	[0.762]
.XX	+/- 0.01	[0.254]
.XXX	+/- 0.005	[0.127]

ANGLES +/- .5°  
SURF FINISH 63 RMS

DWG BY  
CHECK BY  
PROJ ENG  
MFG ENG

DATE  
DATE  
DATE  
DATE

mo/day/yr

DO NOT SCALE DRAWING

FILE NUMBER - 266-99xx-1  
INITIAL PROJECT - 266

MATERIAL: B.O.M.

FINISH:

THIRD ANGLE PROJECTION

TELEMARK  
telemark.com

MODEL 266-02 EB SOURCE,  
4 PKT, 15CC

B

SCALE 1:4  
SHEET 1 of 1

DWG NO.  
266-9902-2

REV  
A

CONFIDENTIAL. This document contains proprietary data of TELEMARK and is not to be copied or distribetd without the prior written consent of TELEMARK. The receipt or possession of the document does not convey any rights to reproduce it, disclose its contents, or to manufacture, use or sell anything incorporating the conepts and details disclosed by it. Such concepts andndetails are not to be used other than for the benefit of TELEMARK and are not to be disclosed to others without the prior written consent of an officer of TELEMARK.



1

2

3

4

5

ECN

ZONE

REV

DESCRIPTION

BY

DATE

1

2

3

4

5

6

ITEM NO.

PART NUMBER

DESCRIPTION

266-9908-2/QTY.

UNLESS OTHERWISE SPECIFIED

GLOBAL TOLERANCES

INCHES

[mm]

.X

+/- .03

[0.762]

.XX

+/- 0.01

[0.254]

.XXX

+/- 0.005

[0.127]

ANGLES

+/- .5°

SURF FINISH

63 RMS

DWG BY

CHECK BY

PROJ ENG

MFG ENG

DATE

DATE

DATE

DATE

mo/day/yr

DO NOT SCALE DRAWING

FILE NUMBER

INITIAL PROJECT

- 266-99xx-1

- 266

MATERIAL:

B.O.M.

FINISH:

THIRD ANGLE PROJECTION

TELEMARK

telemark.com

MODEL 266-08 EB SOURCE,

4 PKT, 25CC

B

SCALE

1:4

SHEET

1

of

1

DWG NO.

266-9908-2

REV

A

CONFIDENTIAL. This document contains proprietary data of TELEMARK and is not to be copied or distribetd without the prior written consent of TELEMARK. The receipt or possession of the document does not convey any rights to reproduce it, disclose its contents, or to manufacture, use or sell anything incorporating the conepts and details disclosed by it. Such concepts anddetails are not to be used other than for the benefit of TELEMARK and are not to be disclosed to others without the prior written consent of an officer of TELEMARK.

1

2

3

4

5

6

1

5

4

2

3

1

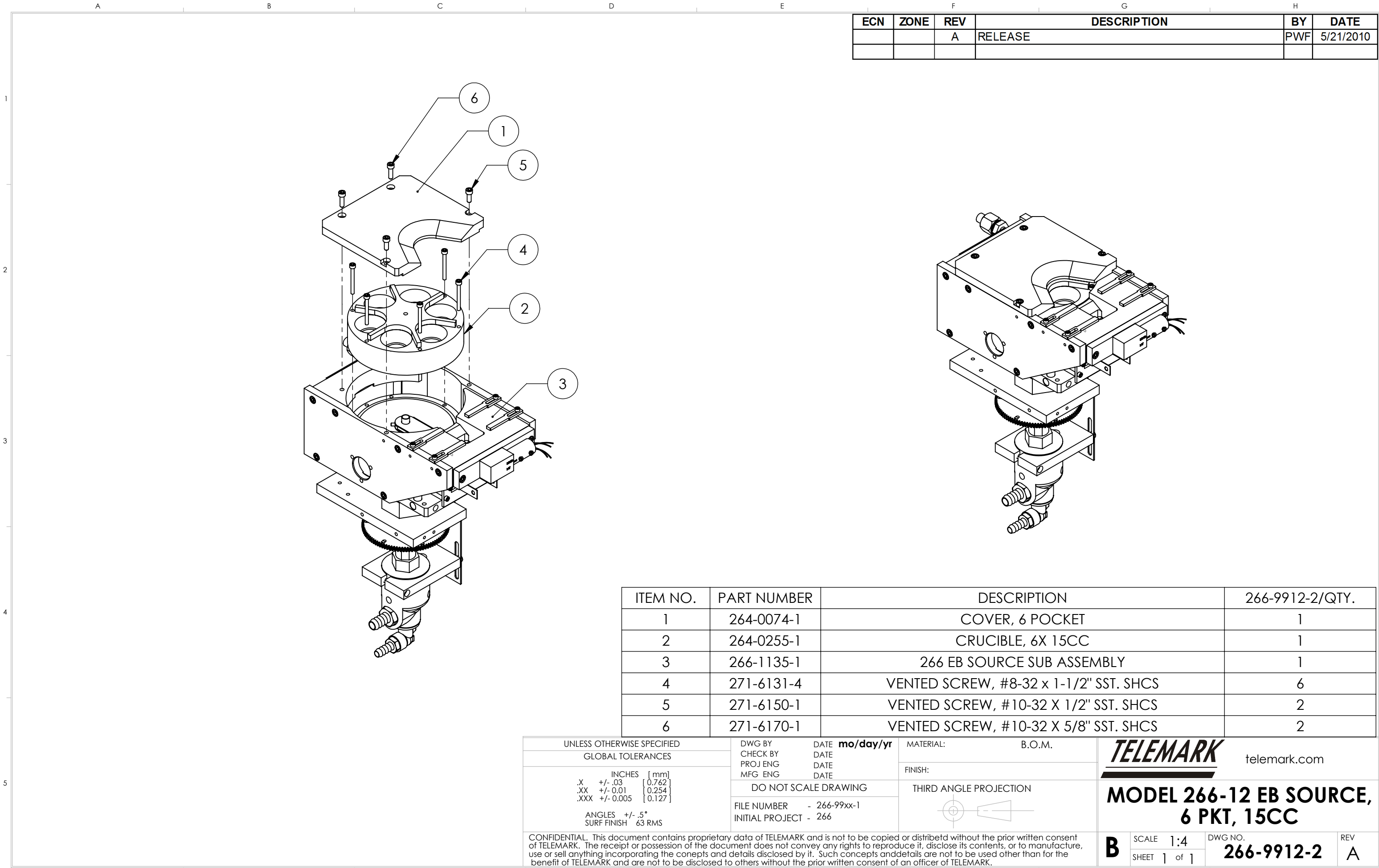
2

3

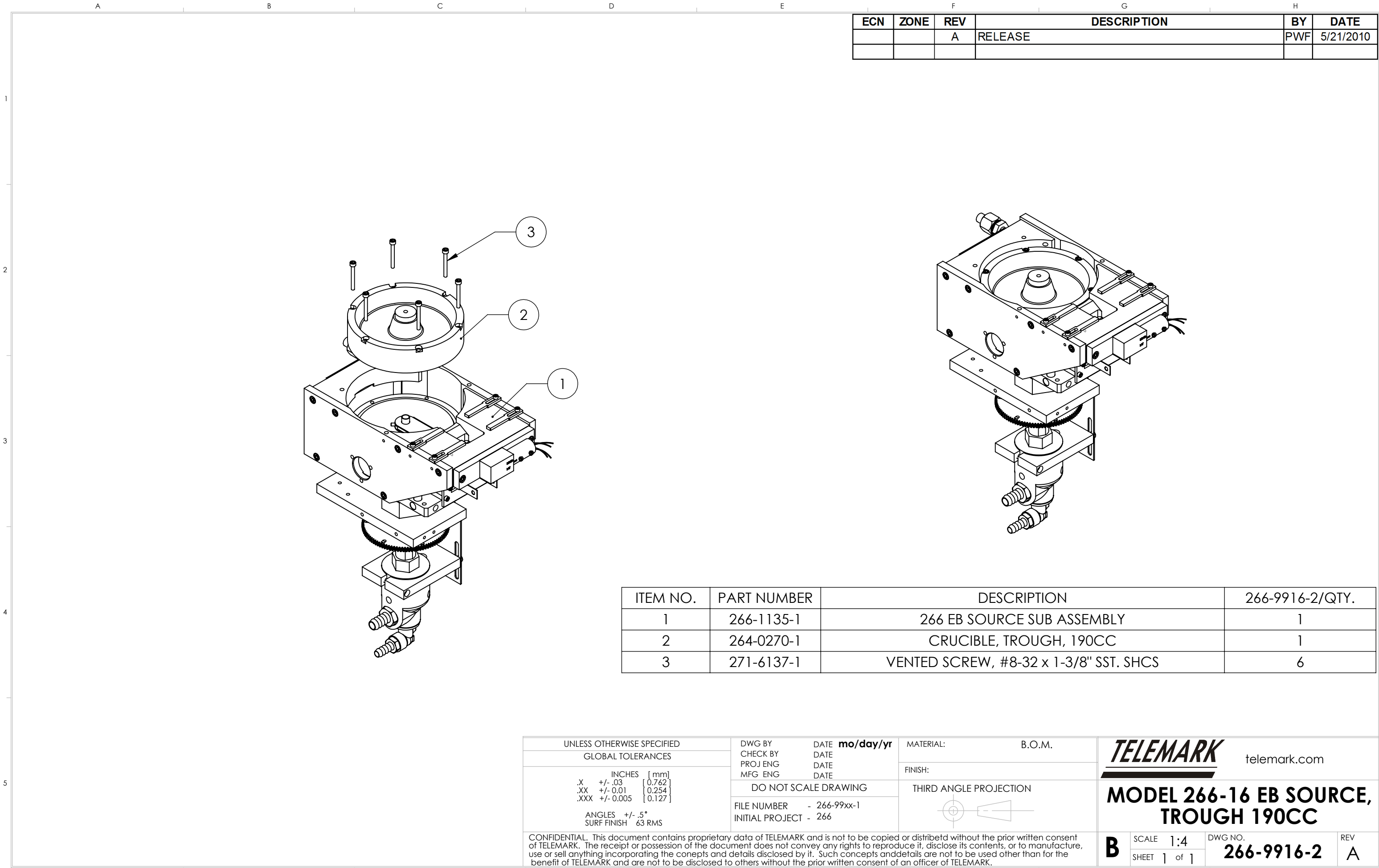
4

5











1

2

3

4

5

ECN	ZONE	REV	DESCRIPTION	BY	DATE
		A	RELEASE	PWF	5/21/2010

ITEM NO.	PART NUMBER	DESCRIPTION	266-9928-2/QTY.
1	264-0073-1	COVER, 4 POCKET	1
2	264-0245-1	CRUCIBLE, 4X 7CC	1
3	266-1135-1	266 EB SOURCE SUB ASSEMBLY	1
4	271-6131-4	VENTED SCREW, #8-32 x 1-1/2" SST. SHCS	4
5	271-6150-1	VENTED SCREW, #10-32 X 1/2" SST. SHCS	2
6	271-6170-1	VENTED SCREW, #10-32 X 5/8" SST. SHCS	2

UNLESS OTHERWISE SPECIFIED  
GLOBAL TOLERANCES

	INCHES	[mm]
.X	+/- .03	[0.762]
.XX	+/- 0.01	[0.254]
.XXX	+/- 0.005	[0.127]

ANGLES +/- .5°  
SURF FINISH 63 RMS

DWG BY  
CHECK BY  
PROJ ENG  
MFG ENG

DATE  
DATE  
DATE  
DATE

mo/day/yr

MATERIAL: B.O.M.

FINISH:

THIRD ANGLE PROJECTION

FILE NUMBER - 266-99xx-1  
INITIAL PROJECT - 266

TELEMARK

telemark.com

MODEL 266-28 EB SOURCE,  
4 PKT, 7CC

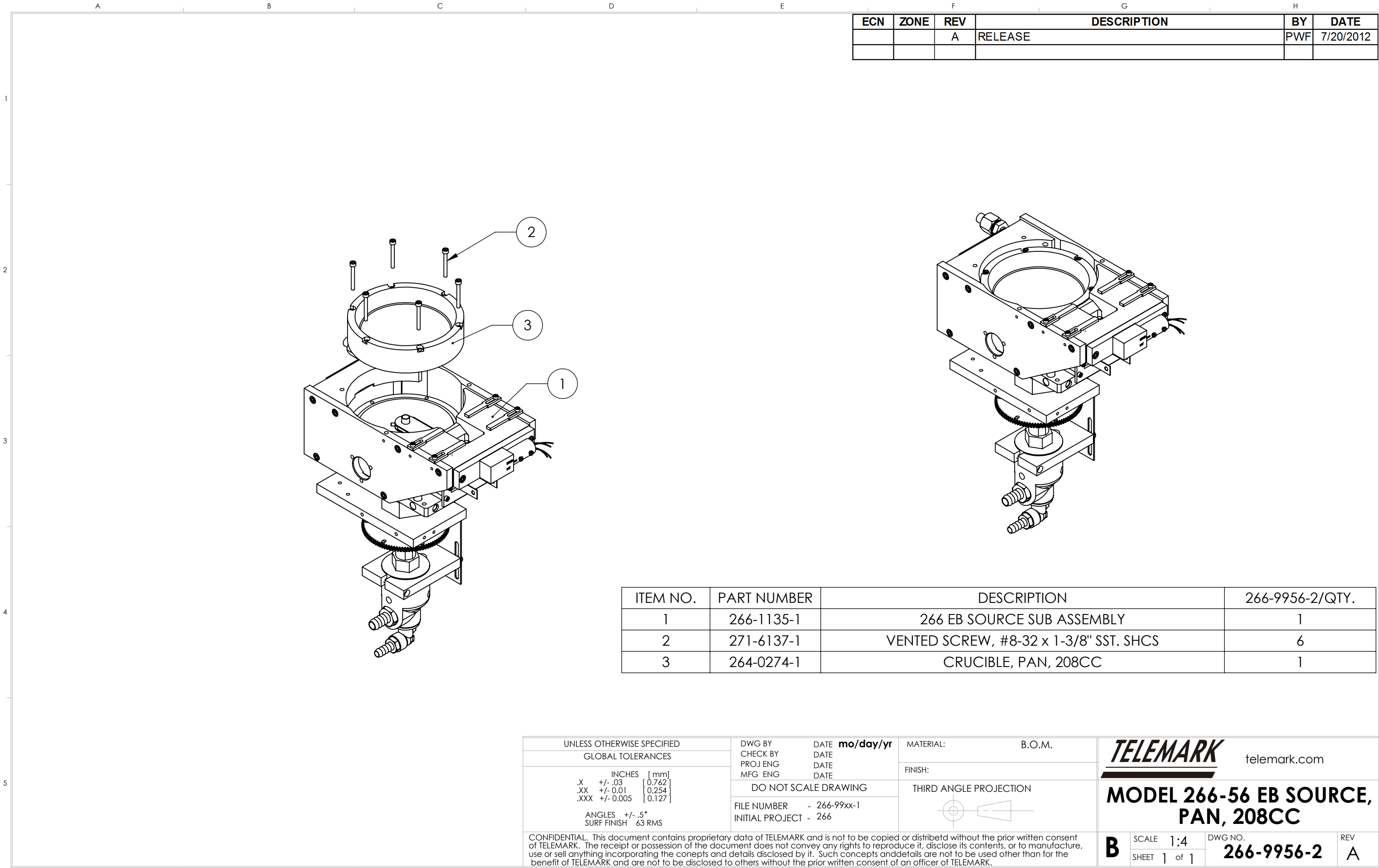
B

SCALE 1:4  
SHEET 1 of 1

DWG NO. 266-9928-2

REV A

CONFIDENTIAL. This document contains proprietary data of TELEMARK and is not to be copied or distribetd without the prior written consent of TELEMARK. The receipt or possession of the document does not convey any rights to reproduce it, disclose its contents, or to manufacture, use or sell anything incorporating the conepts and details disclosed by it. Such concepts anddetails are not to be used other than for the benefit of TELEMARK and are not to be disclosed to others without the prior written consent of an officer of TELEMARK.





# Common Assemblies

## **E-Beam Source**



A

B

C

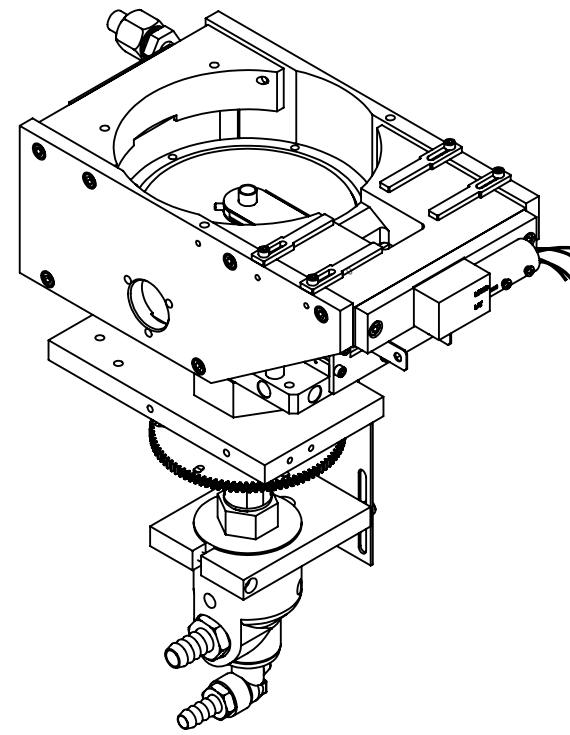
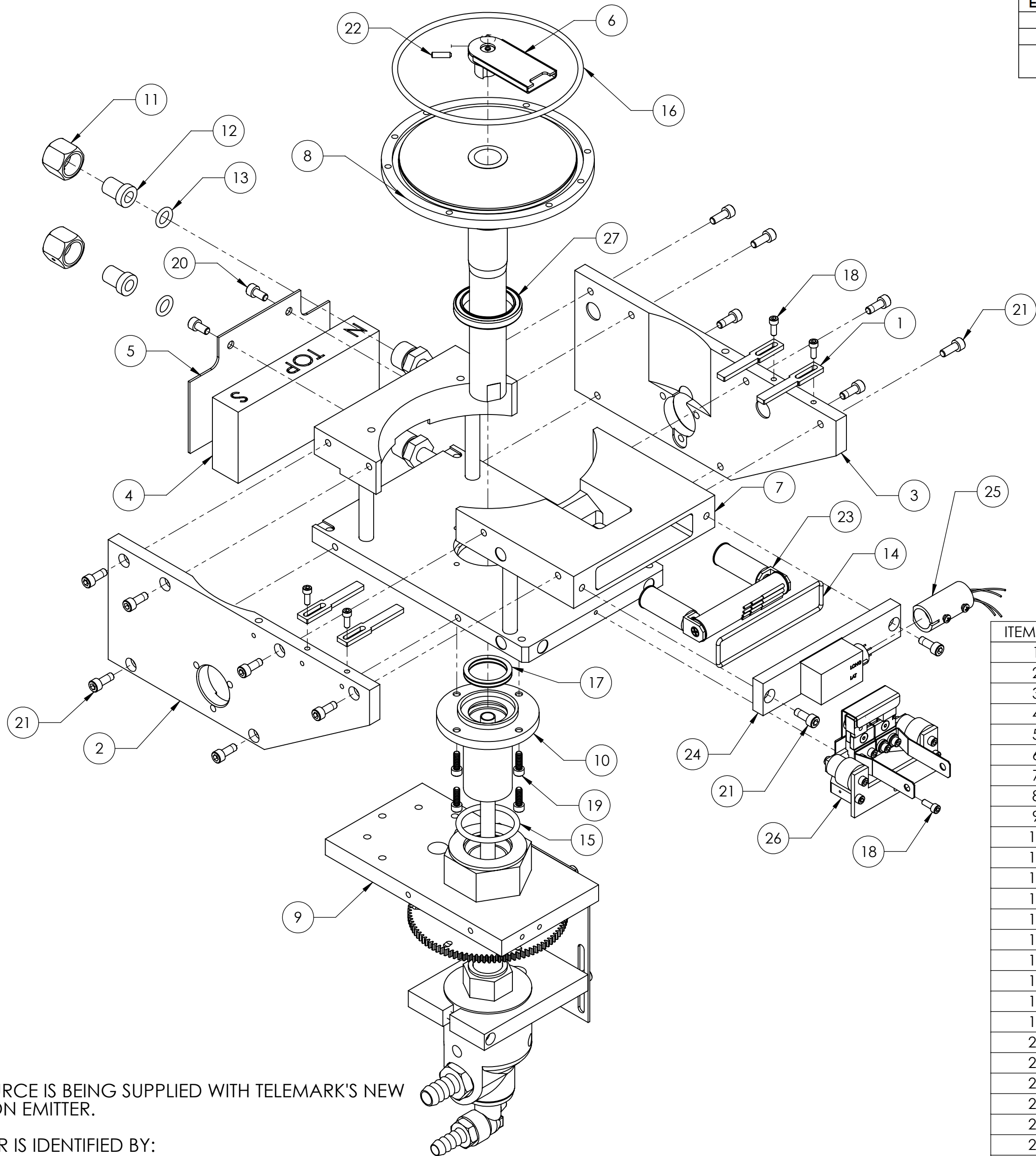
D

E

F

G

ECN	ZONE	REV	DESCRIPTION	BY	DATE
		A	RELEASE	PWF	5/19/2010
		B	CHANGE EMITTER TO 273-0150-8	PWF	8/21/2013
		C	CHANGED EMITTER FROM 273-0150-8 TO 274-0150-1 & ADDING EMITTER NOTE	GPD	3/27/2019



ITEM NO.	PART NUMBER	DESCRIPTION	266-1135-1/QTY.
1	263-0053-1	POLE PIECE	4
2	264-0058-1	MAGNET ARM, LEFT	1
3	264-0059-1	MAGNET ARM, RIGHT	1
4	265-0055-1	PERMANENT MAGNET	1
5	265-0083-1	REAR SHIELD	1
6	266-0452-3	CRUCIBLE WATER DUCT ASSY. H/F	1
7	266-1112-2	BASE PLATE ASSEMBLY, VCO	1
8	266-1442-1	CRUCIBLE BASE ASSEMBLY	1
9	267-0140-1	EXTERNAL ASSEMBLY	1
10	267-0475-1	FEEDTHRU	1
11	271-0650-2	WATER FITTING NUT	2
12	271-0651-2	WATER FITTING GLAND	2
13	271-2110-1	O-RING, VITON, ID 3/8", W 3/32"	2
14	271-2146-1	O-RING, VITON, ID 2-5/8", W 3/32"	1
15	271-2220-1	O-RING, VITON, ID 1-3/8", W 1/8"	1
16	271-2247-1	O-RING, VITON, ID 4-5/8", W 1/8"	1
17	271-4214-1	QUAD RING, VITON, ID 1", W 1/8"	1
18	271-6050-1	VENTED SCREW, #6-32 UNC X 3/8" SHCS	5
19	271-6128-1	VENTED SCREW, #8-32 X 1/2" SST SHCS	4
20	271-6145-1	VENTED SCREW, #10-32 X 3/8" SST SHCS	2
21	271-6150-1	VENTED SCREW, #10-32 X 1/2" SHCS	14
22	271-6199-2	SET SCREW, #6-32 X 1/2" SST	2
23	272-0093-1	COIL ASSEMBLY	1
24	272-0100-3	COIL SEAL PLATE ASSEMBLY	1
25	272-0125-2	COIL CONNECTOR ASSEMBLY	1
26	274-0150-1	EMITTER ASSEMBLY	1
27	281-0035-1	BEARING, 1-1/8	1

**NOTE:**

THIS MODEL SOURCE IS BEING SUPPLIED WITH TELEMAR'S NEW ARC SUPPRESSION EMITTER.

THIS NEW EMITTER IS IDENTIFIED BY:  
A "4" ON THE FRONT SURFACE OF THE MOUNTING BRACKET  
STANDARD EMITTER PART NUMBER 274-0150-1 USES STAINLESS  
STEEL SCREWS.  
UHV EMITTER PART NUMBER 274-0150-3 USES SILVER-PLATED  
SCREWS.

THE PRIMARY COMPONENTS IN THIS EMITTER ARE DIFFERENT  
FROM THOSE IN OUR LEGACY EMITTER AND ARE NOT  
INTERCHANGEABLE WITH THOSE OF THE LEGACY EMITTER.

UNLESS OTHERWISE SPECIFIED  
GLOBAL TOLERANCES

INCHES [mm]  
X +/- .03 [0.762]  
.XX +/- .01 [0.254]  
.XXX +/- .005 [0.127]

ANGLES +/- .5°  
SURF FINISH .63 RMS

DWG BY  
CHECK BY  
PROJ ENG  
MFG ENG

DO NOT SCALE DRAWING

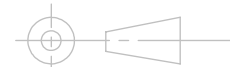
FILE NUMBER - 266-1135-1  
INITIAL PROJECT -

DATE mo/day/yr  
DATE  
DATE

MATERIAL:

FINISH:

THIRD ANGLE PROJECTION



**TELEMAR**

telemark.com

**266 EB SOURCE  
SUB ASSEMBLY**

C

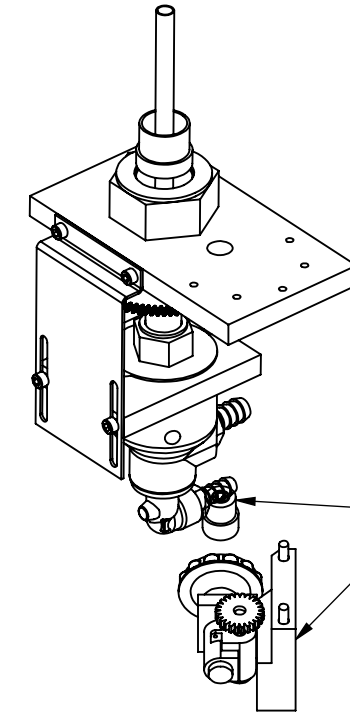
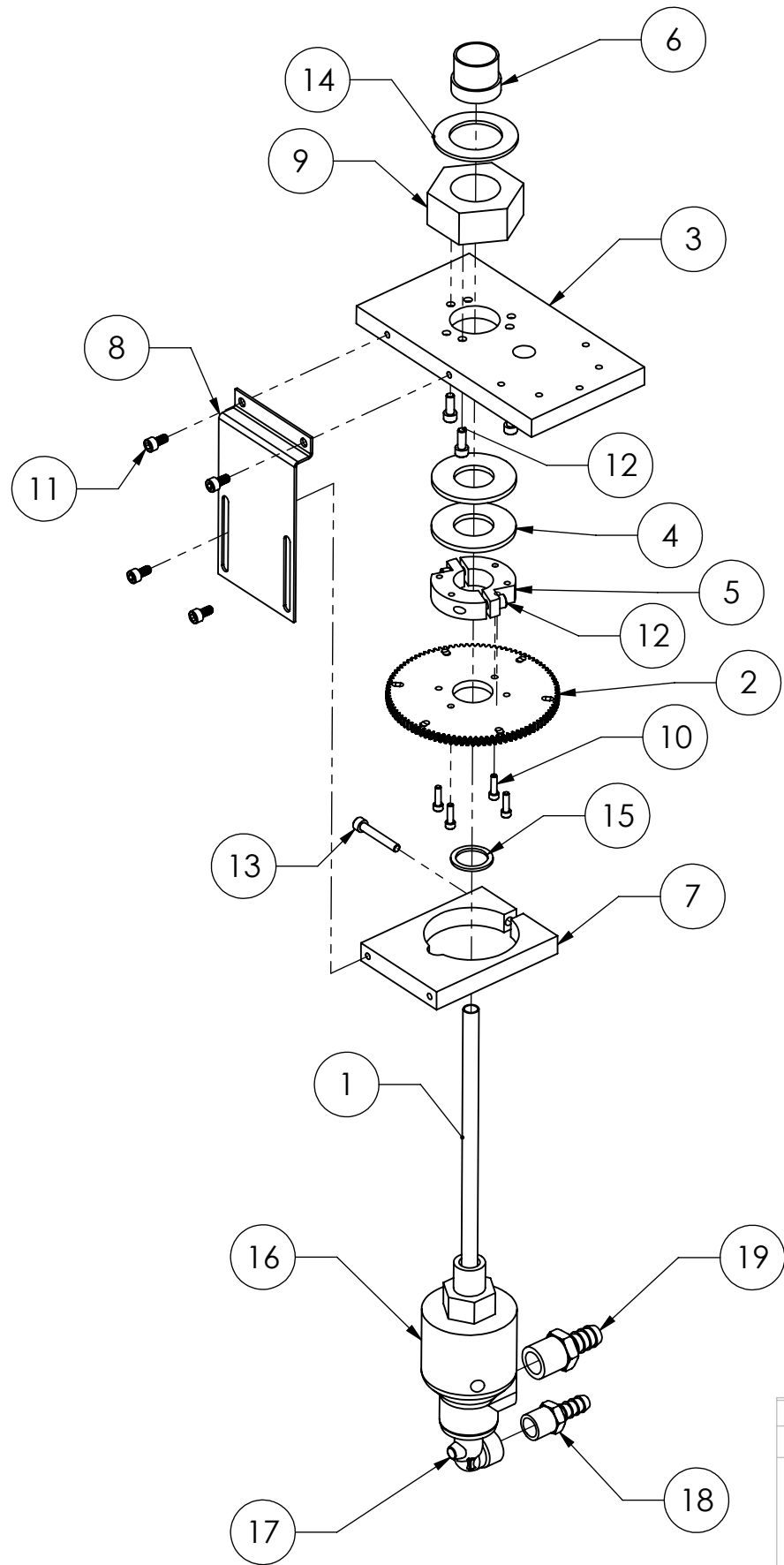
SCALE 1:2  
SHEET 1 of 1

DWG NO. 266-1135-1

REV C

CONFIDENTIAL. This document contains proprietary data of TELEMAR and is not to be copied or distributed without the prior written consent of TELEMAR. The receipt or possession of the document does not convey any rights to reproduce it, disclose its contents, or to manufacture, use or sell anything incorporating the concepts and details disclosed by it. Such concepts and details are not to be used other than for the benefit of TELEMAR and are not to be disclosed to others without the prior written consent of an officer of TELEMAR.





ISOMETRIC VIEW

OPTIONAL MANUAL DRIVE 267-9025-1

ECN	ZONE	REV	DESCRIPTION	BY	DATE
		B	SEPARATE FROM MANUAL DRIVE	PWF	4/6/2010
		B1	UPDATE CLAMP	PWF	8/2/2010
		C	CHANGE ITEM 15 TO 281-2010-1	PWF	8/19/2013

ITEM NO.	PART NUMBER	DESCRIPTION	Default/ QTY.
1	266-0455-1	WATER INLET TUBE	1
2	267-0149-1	GEAR	1
3	267-0160-1	MOTOR CLAMP	1
4	267-0160-6	MOTOR CLAMP WASHER	2
5	267-0162-1	GEAR CLAMP	2
6	267-0163-1	BUSHING	1
7	267-0170-1	UNION CLAMP	1
8	267-0171-1	UNION STRAP	1
9	267-0472-1	FEEDTHRU NUT	1
10	271-6060-9	SCREW, #6-32 X 1/2" SST SHCS	4
11	271-6145-9	SCREW, #10-32 X 3/8" SST SHCS	4
12	271-6150-9	SCREW, #10-32 X 1/2" SST SHCS.	5
13	271-6175-9	SCREW, #10-32 X 1/2" SST SHCS.	1
14	275-0046-2	WASHER, 1.25"	1
15	281-2010-1	GASKET, WATER UNION	1
16	281-4020-1	WATER UNION	1
17	281-4022-1	WATER FITTING ELBOW, 3/8 NPT-F X 3/8 TB	1
18	281-4023-1	WATER FITTING, 1/2 NPT X 1/2 TB	1
19	281-4024-1	WATER FITTING, 3/8 NPT X 1/2 TB	1

UNLESS OTHERWISE SPECIFIED		
GLOBAL TOLERANCES		
	INCHES	[mm]
.X	+/- .03	[0.762]
.XX	+/- 0.01	[0.254]
.XXX	+/- 0.005	[0.127]
ANGLES +/- .5°		
SURF FINISH 63 RMS		

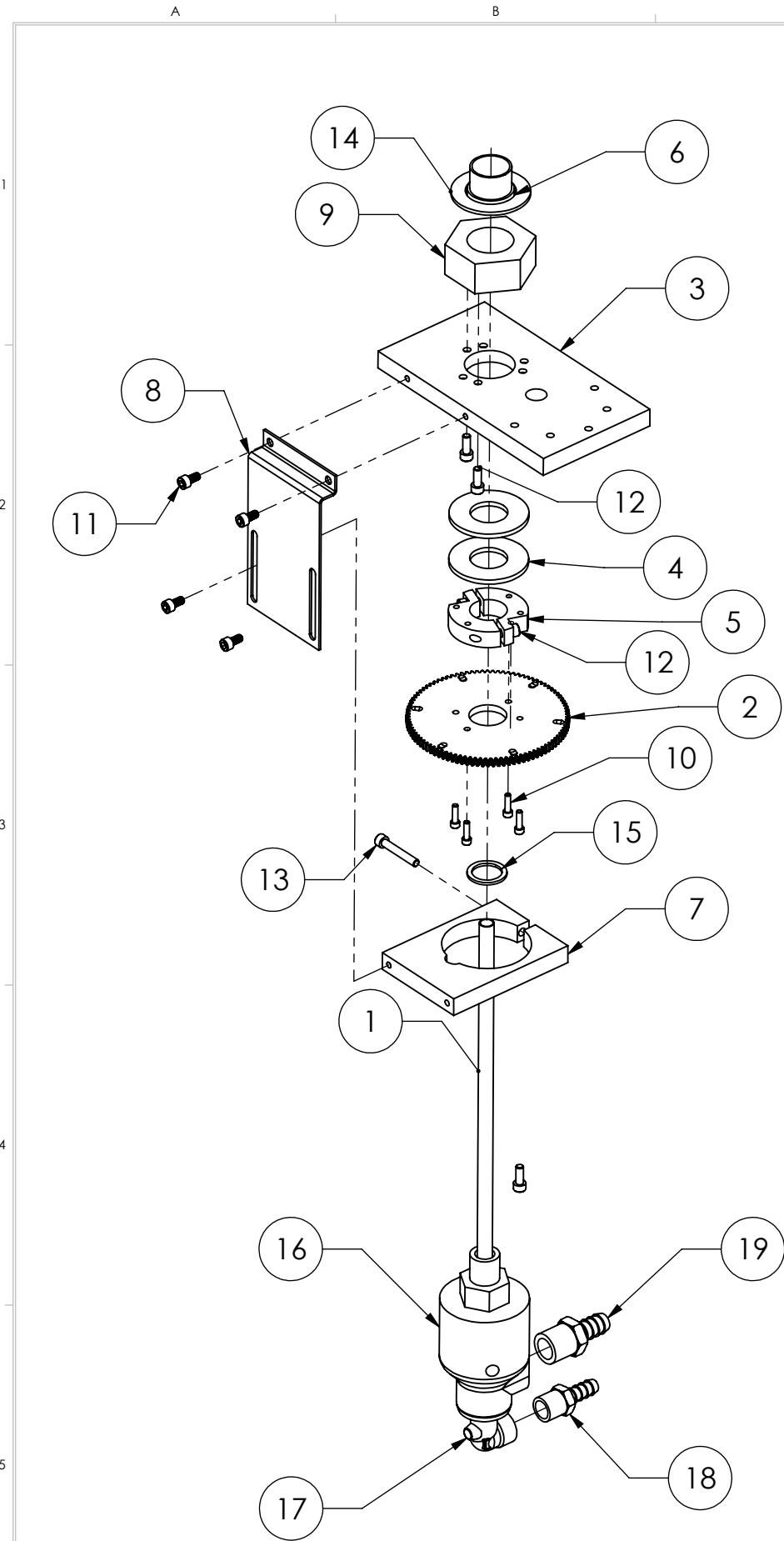
DWG BY	DATE	mo/day/yr
CHECK BY	DATE	
PROJ ENG	DATE	
MFG ENG	DATE	
DO NOT SCALE DRAWING		
FILE NUMBER	- 267-0140-1	
INITIAL PROJECT	-	

MATERIAL:	B.O.M.
FINISH:	SEE NOTES
THIRD ANGLE PROJECTION	

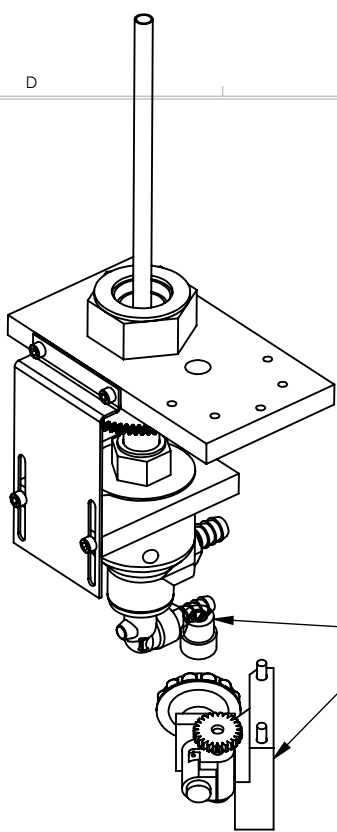


telemark.com

EXTERNAL ASSEMBLY



ISOMETRIC VIEW



OPTIONAL MANUAL DRIVE 267-9025-1

ECN	ZONE	REV	DESCRIPTION	BY	DATE
		A	RELEASE	GPD	6/28/2022

ITEM NO.	PART NUMBER	DESCRIPTION	Default/ QTY.
1	266-0455-3	WATER INLET TUBE	1
2	267-0149-2	GEAR	1
3	267-0160-1	MOTOR CLAMP	1
4	267-0160-6	MOTOR CLAMP WASHER	2
5	267-0162-1	GEAR CLAMP	2
6	267-0163-1	BUSHING	1
7	267-0170-1	UNION CLAMP	1
8	267-0171-1	UNION STRAP	1
9	267-0472-1	FEEDTHRU NUT	1
10	271-6060-9	SCREW, #6-32 X 1/2" SST SHCS	4
11	271-6145-1	VENTED SCREW, #10-32 UNF X 3/8" SST, SHCS	4
12	271-6150-9	SCREW, #10-32 X 1/2" SST SHCS.	5
13	271-6175-9	SCREW, #10-32 X 1-1/4" SST SHCS.	1
14	275-0046-2	WASHER, 1.25"	1
15	281-2010-1	GASKET, WATER UNION	1
16	281-4020-1	WATER UNION	1
17	281-4022-1	WATER FITTING ELBOW, 3/8 NPT-F X 3/8 TB	1
18	281-4023-1	WATER FITTING, 1/2 NPT X 1/2 TB	1
19	281-4024-1	WATER FITTING, 3/8 NPT X 1/2 TB	1

UNLESS OTHERWISE SPECIFIED  
GLOBAL TOLERANCES

	INCHES	[mm]
.X	+/- .03	[0.762]
.XX	+/- 0.01	[0.254]
.XXX	+/- 0.005	[0.127]

ANGLES +/- .5°  
SURF FINISH 63 RMS

DWG BY **G. DION** DATE **6-28-2022**  
CHECK BY DATE  
PROJ ENG DATE  
MFG ENG DATE

DO NOT SCALE DRAWING

FILE NUMBER - 267-0140-3  
INITIAL PROJECT -

MATERIAL: SEE PARTS LIST

FINISH: SEE NOTES

THIRD ANGLE PROJECTION

**TELEMARK** telemark.com

**EXTERNAL ASSEMBLY**

**B**

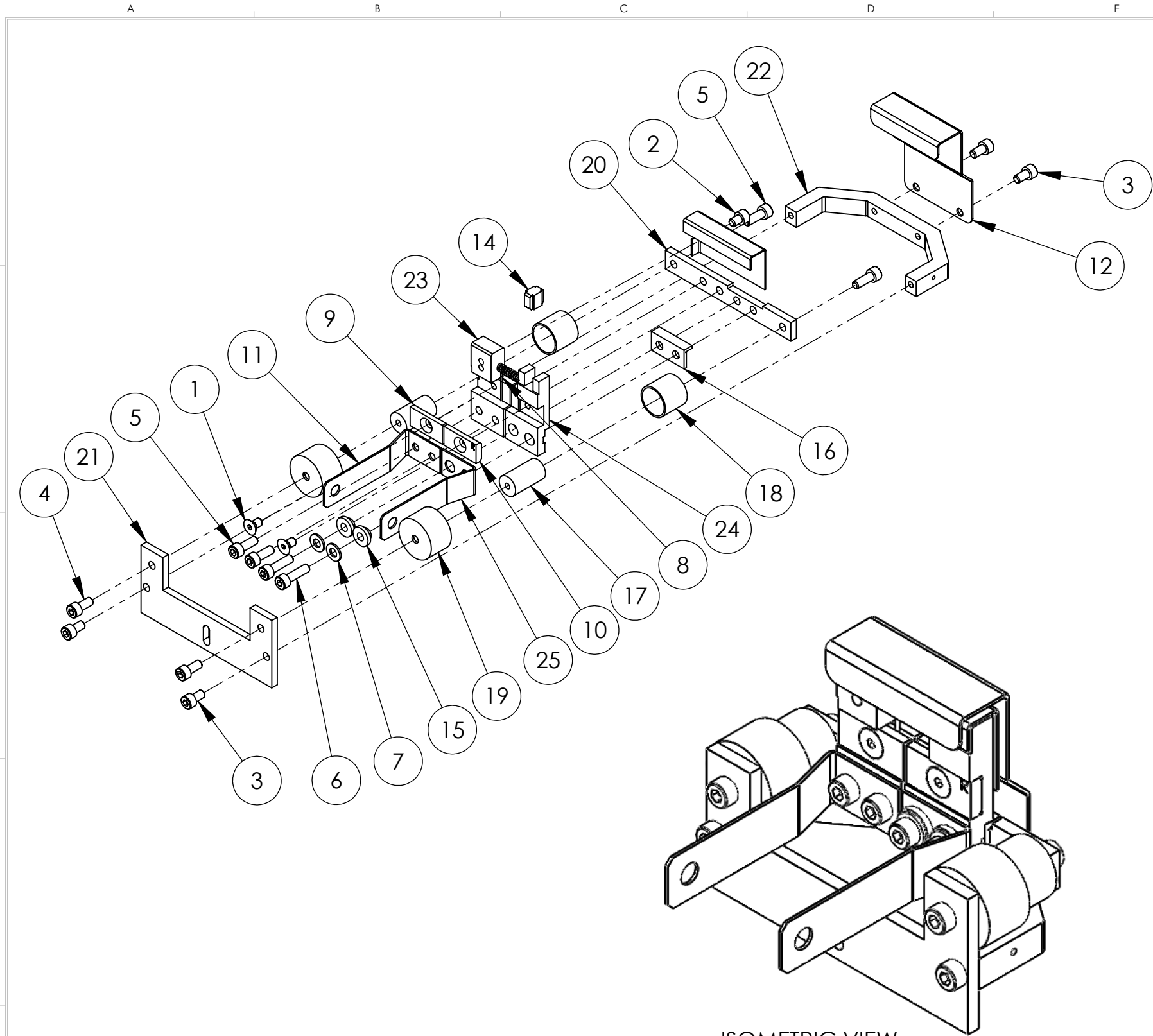
SCALE **1:4**  
SHEET **1** of **1**

DWG NO. **267-0140-3**

REV **A**

CONFIDENTIAL. This document contains proprietary data of TELEMARK and is not to be copied or distributed without the prior written consent of TELEMARK. The receipt or possession of the document does not convey any rights to reproduce it, disclose its contents, or to manufacture, use or sell anything incorporating the concepts and details disclosed by it. Such concepts and details are not to be used other than for the benefit of TELEMARK and are not to be disclosed to others without the prior written consent of an officer of TELEMARK.





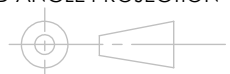
ISOMETRIC VIEW

UNLESS OTHERWISE SPECIFIED			
GLOBAL TOLERANCES			
	INCHES	[mm]	
.X	+/- .03	[0.762]	
.XX	+/- 0.01	[0.254]	
.XXX	+/- 0.005	[0.127]	
ANGLES +/- .5°			
SURF FINISH 63 RMS			

CONFIDENTIAL. This document contains proprietary data of TELEMAR and is not to be copied or distributed without the prior written consent of TELEMAR. The receipt or possession of the document does not convey any rights to reproduce it, disclose its contents, or to manufacture, use or sell anything incorporating the concepts and details disclosed by it. Such concepts and details are not to be used other than for the benefit of TELEMAR and are not to be disclosed to others without the prior written consent of an officer of TELEMAR.


DWG BY <b>G. DION</b>	DATE <b>7-21-2015</b>
CHECK BY	DATE
PROJ ENG	DATE
MFG ENG	DATE
DO NOT SCALE DRAWING	
FILE NUMBER	- 274-0150-1
INITIAL PROJECT	-

MATERIAL:	SEE PARTS LIST
FINISH:	SEE NOTES
THIRD ANGLE PROJECTION	



ECN	ZONE	REV	DESCRIPTION	BY	DATE
		A	RELEASE	GPD	7/21/2015
		B	ADDING LARGER INSULATOR SHIELD	GPD	7/21/2016
		C	ITEM 17 FROM 273-0018-7 TO 273-0018-8	GPD	8/2/2016
		D	P/N FROM 273-0017-1 TO 273-0017-2 & 273-0018-8 TO 273-0018-2	GPD	2/21/2017
		E	REVISED PARTS	GPD	10/2/2017
990811		F	P/N FROM 271-6050-1 TO 271-6040-1, 2 PLACES	GPD	2/1/2018

ITEM NO.	PART NUMBER	DESCRIPTION	QTY.
1	271-6010-5	SCREW, #6-32 X 1/4" SLOT FLAT HEAD, Ti	2
2	271-6020-5	SCREW, #6-32 X 3/16" TI SHCS	1
3	271-6030-1	VENTED SCREW, #6-32 UNC X 1/4" SST SHCS	4
4	271-6040-1	VENTED SCREW, #6-32 X 5/16 SST SHCS	2
5	271-6050-1	VENTED SCREW, #6-32 UNC X 3/8" SHCS	4
6	271-6060-1	VENTED SCREW, #6-32 X 1/2" SST SHCS	2
7	271-6242-1	FLAT WASHER, #6 SST	2
8	273-0001-1	FILAMENT, 7-1/2 TURN	1
9	273-0033-3	FILAMENT CLAMP, LEFT	1
10	273-0033-4	FILAMENT CLAMP, RIGHT	1
11	273-0035-1	EMITTER BUS BAR, LEFT	1
12	274-0003-7	ANODE	1
13	274-0004-7	BEAM FORMER	1
14	274-0005-1	INSULATOR, CROSS	1
15	274-0006-1	INSULATOR, COLLAR	2
16	274-0008-1	INSULATOR, L	1
17	274-0010-1	INSULATOR, HV	2
18	274-0011-1	HV SHIELD	2
19	274-0011-2	HV SHIELD	2
20	274-0017-2	MOUNTING BRACKET	1
21	274-0018-2	EMITTER SUPPORT BRACKET	1
22	274-0019-7	U-BRACKET	1
23	274-0031-1	CATHODE BLOCK, LEFT	1
24	274-0032-1	CATHODE BLOCK, RIGHT	1
25	274-0036-1	EMITTER BUSS BAR, RIGHT	1



Battle Ground, WA

## EMITTER ASSEMBLY

**B**

SCALE 1:1  
SHEET 1 of 1

DWG NO.  
**274-0150-1**

REV  
**F**



# Optional Assemblies

## Arc Suppression



A

B

C

D

E

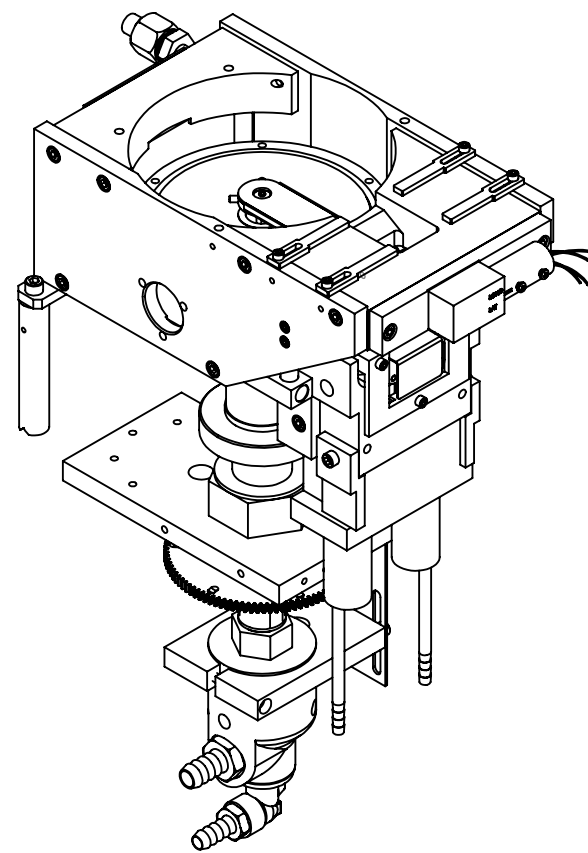
F

G

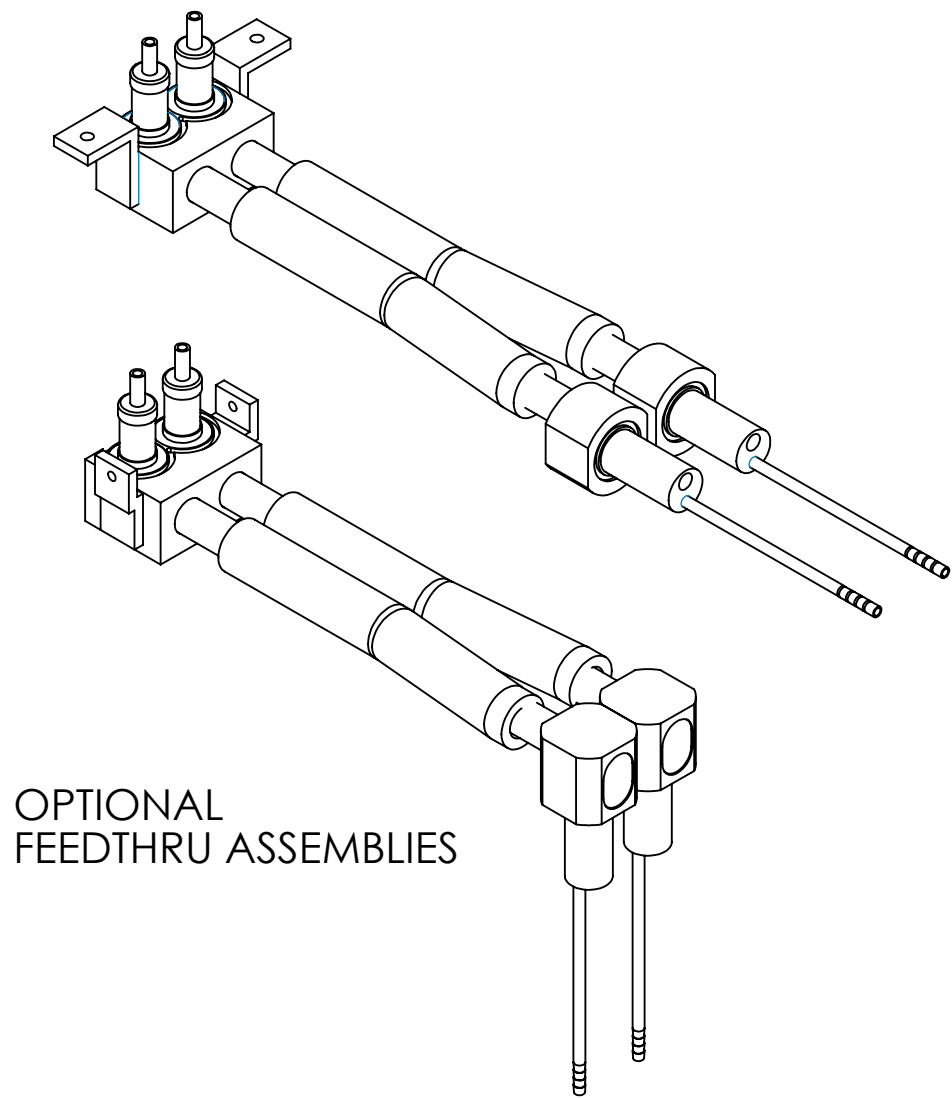
## NOTE:

1. ITEM 1 IS THE SAME AS THE STANDARD 266 ASSEMBLY EXCEPT THE BASE PLATE IS PART NUMBER 266-1112-4, ONLY ONE MOUNTING STRAP PART NUMBER 265-0088-1 IS USED AND CRUCIBLE ASSEMBLY IS 266-1442-2.
2. ITEM 14 IS PART OF THE EMITTER ASSEMBLY PART NUMBER 291-3151-4.
3. ITEM 20 IS THE STANDARD FEEDTHRU, MANY OTHER OPTIONS ARE AVAILABLE.

ECN	ZONE	REV	DESCRIPTION	BY	DATE
		A	RELEASE	PWF	8/15/2012
		B	REVISED EMITTER & POLE PIECES	GPD	1/9/2015
		B1	REVISED NOTES	GPD	1/19/2015
		C	SUB ASSEMBLY FROM 266-0135-2 TO 266-1135-2	GPD	2/23/2015



ITEM NO.	PART NUMBER	DESCRIPTION	266-5175-1/QTY.
1	264-5158-3	ANGLE MOUNT, RIGHT	1
2	264-5158-4	ANGLE MOUNT, LEFT	1
3	265-0465-1	STAND-OFF	2
4	264-0053-1	POLE PIECE (264)	2
5	265-0088-1	MOUNTING STRAP	1
6	266-1135-2	MODEL 266 EB SOURCE SUB ASSEMBLY, AF	1
7	271-6030-1	VENTED SCREW, #6-32 UNC X 1/4" SHCS	2
8	271-6050-1	VENTED SCREW, #6-32 UNC X 3/8" SHCS	1
9	271-6060-1	VENTED SCREW, #6-32 X 1/2" SST SHCS	4
10	271-6140-1	VENTED SCREW, #10-32 UNF X 5/16" SST, SHCS	2
11	271-6145-1	VENTED SCREW, #10-32 X 3/8" SST SHCS	2
12	271-6150-1	VENTED SCREW, #10-32 X 1/2" SHCS	4
13	271-6180-1	VENTED SCREW, 1/4-20 X 3/8" SST SHCS	2
14	291-3003-7	ANODE (NOTE: PART OF ASSY 291-3151-4)	1
15	291-3024-1	EMITTER BLOCK, 264, 265, 295	1
16	291-3151-4	EMITTER ASSEMBLY, AS, 264, 269, 266, 293, 295	1
17	291-5040-1	POWER BLOCK, L.H.	1
18	291-5041-1	POWER BLOCK, R.H.	1
19	291-5042-1	POWER CLAMP	2
20	291-5190-2	DUAL HV F/T ASSEMBLY, 264/295	1

OPTIONAL  
FEEDTHRU ASSEMBLIESUNLESS OTHERWISE SPECIFIED  
GLOBAL TOLERANCES

X	+/- .03	[0.762]
.XX	+/- 0.01	[0.254]
.XXX	+/- 0.005	[0.127]

ANGLES +/- .5°  
SURF FINISH .63 RMSDWG BY  
CHECK BY  
DATE  
PROJ ENG  
DATE  
MFG ENG  
DATE

DO NOT SCALE DRAWING

FILE NUMBER - 264-5175-1

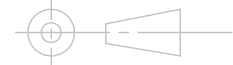
INITIAL PROJECT -

DATE mo/day/yr

MATERIAL: BOM

FINISH: SEE NOTES

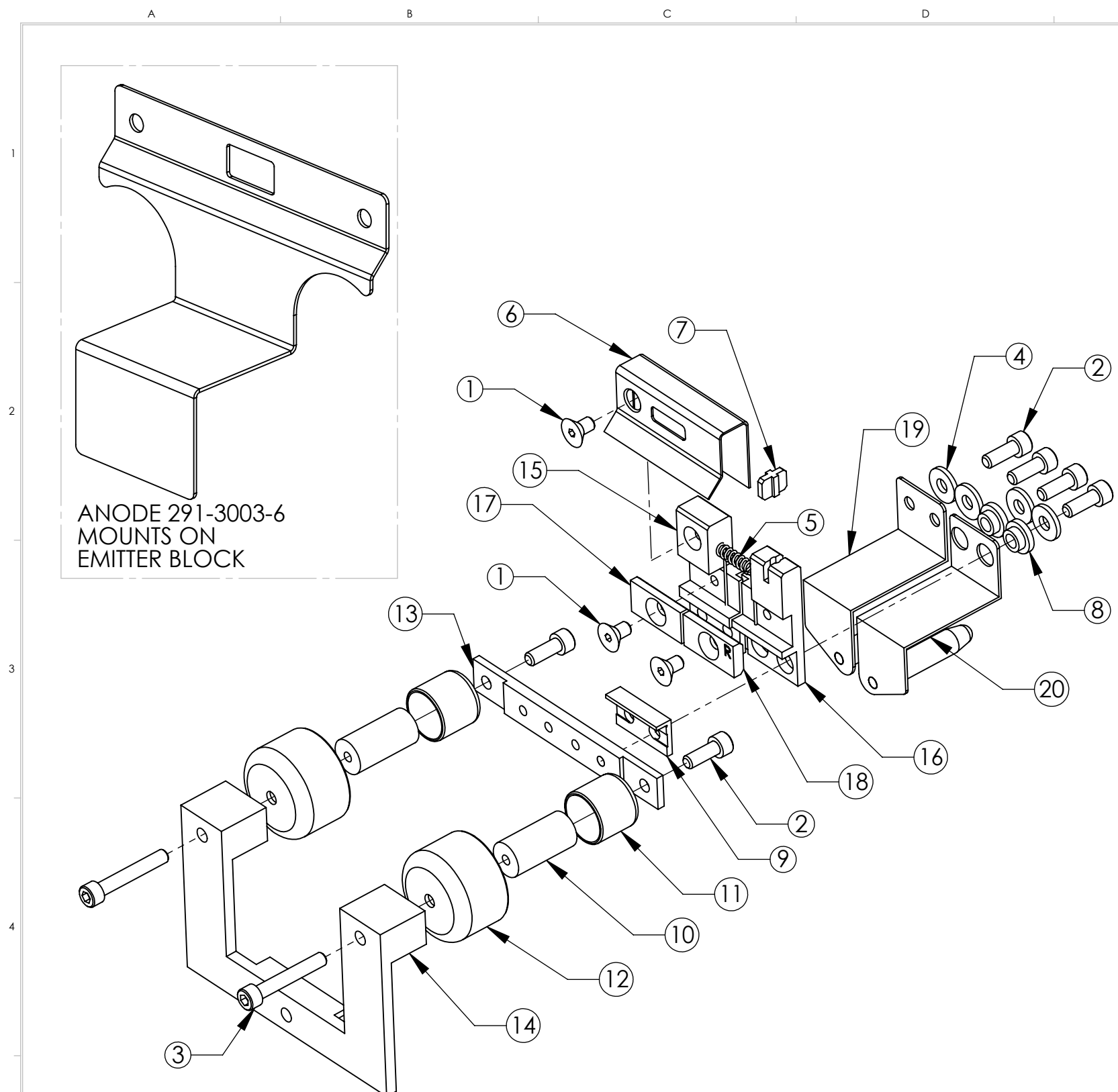
THIRD ANGLE PROJECTION



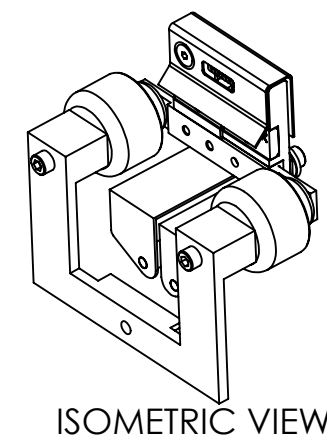
TELEMARK

telemark.com

266 ARC SUPPRESSION  
OPTIONSCALE 1:2  
SHEET 1 of 1DWG NO.  
266-5175-1REV  
C



ANODE 291-3003-6  
MOUNTS ON  
EMITTER BLOCK



ISOMETRIC VIEW

ECN	ZONE	REV	DESCRIPTION	BY	DATE
		A	PRODUCTION RELEASE	D. LY	2/10/2002
		B	ECN#990383	D. LY	5/17/2004
		C	UPDATE	PWF	8/17/2010

ITEM NO.	QTY.	PART NO.	DESCRIPTION
1	3	271-6010-5	SCREW, #6-32 X 1/4" SLOT FLAT HEAD,TI
2	6	271-6050-5	SCREW, #6-32 X 3/8" SHCS, TI
3	2	271-6073-1	SOC. HEAD CAP SCREW, #6-32 X 7/8"
4	4	271-6242-1	FLAT WASHER, #6.SST.
5	1	273-0001-1	FILAMENT, 7 1/2 TURN
6	1	291-3004-1	BEAM FORMER
7	1	291-3005-1	INSULATOR, CROSS
8	2	291-3006-1	INSULATOR, COLLAR
9	1	291-3008-1	L INSULATOR
10	2	291-3010-1	HV INSULATOR
11	2	291-3011-1	HV SHIELD, ARC FREE
12	2	291-3013-1	HV SHIELD
13	1	291-3017-2	MOUNTING BRACKET
14	1	291-3018-5	EMITTER SUPPORT BRACKET
15	1	291-3031-1	CATHODE BLOCK, LEFT
16	1	291-3032-1	CATHODE BLOCK, RIGHT
17	1	291-3033-3	FILAMENT CLAMP, LEFT
18	1	291-3033-4	FILAMENT CLAMP, RIGHT
19	1	291-3035-5	EMITTER BUS BAR ASSY., LEFT (295)
20	1	291-3036-5	EMITTER BUS BAR ASSY., RIGHT (295)

UNLESS OTHERWISE SPECIFIED  
GLOBAL TOLERANCES

	INCHES	[mm]
.X	+/- .03	[0.762]
.XX	+/- 0.01	[0.254]
.XXX	+/- 0.005	[0.127]

ANGLES +/- .5°  
SURF FINISH 63 RMS

DWG BY **D. LY**    DATE **2/10/02**  
CHECK BY            DATE  
PROJ ENG            DATE  
MFG ENG            DATE

DO NOT SCALE DRAWING

FILE NUMBER    - 291-3151-1  
INITIAL PROJECT -

MATERIAL:            SEE B.O.M.

FINISH:                B.O.M.

THIRD ANGLE PROJECTION

**TELEMARK**    telemark.com

**EMITTER ASSEMBLY,  
264, 265, 295**

**B**    SCALE 1:1    DWG NO. 291-3151-1    REV C

SHEET 1 of 1

CONFIDENTIAL. This document contains proprietary data of TELEMARK and is not to be copied or distributed without the prior written consent of TELEMARK. The receipt or possession of the document does not convey any rights to reproduce it, disclose its contents, or to manufacture, use or sell anything incorporating the concepts and details disclosed by it. Such concepts and details are not to be used other than for the benefit of TELEMARK and are not to be disclosed to others without the prior written consent of an officer of TELEMARK.