

TELEMARK 269 Multi Pocket E-Beam Source Drawings

The current version of this drawing pdf can be found at

<https://telemark.com/uhv-e-beam-sources/near-uhv-multi-pocket-sources/>

Drawing	Rev.	Description	Page
Reference Dimensions			2
R269-0001	B	Model 269 E-Beam Source Dimensions	3
Model Assemblies			5
269-9902-1	B	Model 269-02 EB Source, 4 pkt, 15cc, VCR	6
269-9902-2	B	Model 269-02 EB Source, 4 pkt, 15cc, CFF	7
269-9906-1	B	Model 269-06 EB Source, 6 pkt, 7cc, VCR	8
269-9906-2	B	Model 269-06 EB Source, 6 pkt, 7cc, CFF	9
269-9908-1	B	Model 269-08 EB Source, 4 pkt, 25cc, VCR	10
269-9908-2	B	Model 269-08 EB Source, 4 pkt, 25cc, CFF	11
269-9912-1	B	Model 269-12 EB Source, 6 pkt, 15cc, VCR	12
269-9912-2	B	Model 269-12 EB Source, 6 pkt, 15cc, CFF	13
269-9914-1	C	Model 269-14 EB Source, 8 pkt, 7cc, VCR	14
269-9914-2	C	Model 269-14 EB Source, 8 pkt, 7cc, CFF	15
269-9920-1	A	Model 269-20 EB Source, 4 pkt, 30cc, VCR	16
269-9920-2	A	Model 269-20 EB Source, 4 pkt, 30cc, CFF	17
269-9928-1	B	Model 269-28 EB Source, 4 pkt, 7cc, VCR	18
269-9928-2	B	Model 269-28 EB Source, 4 pkt, 7cc, CFF	19
Common Assemblies			20
267-9025-1	B	Manual Drive Assembly	21
269-1135-1	D	EB Source Sub Assembly, VCR	22
269-1135-2	D	EB Source Sub Assembly, CFF	23
269-1135-5	D	EB Source Sub Assembly, VCR, 8 pocket	24
269-1135-6	A	EB Source Sub Assembly, CFF, 8 pocket	25
269-1140-1	B	External Assembly	26
269-1140-3	A	External Assembly, 8 pocket	27
274-0150-3	C	Emitter Assy,UHV 7-1/2 Turn Filament	28



Reference Dimensions

E-Beam Source

A

B

C

D

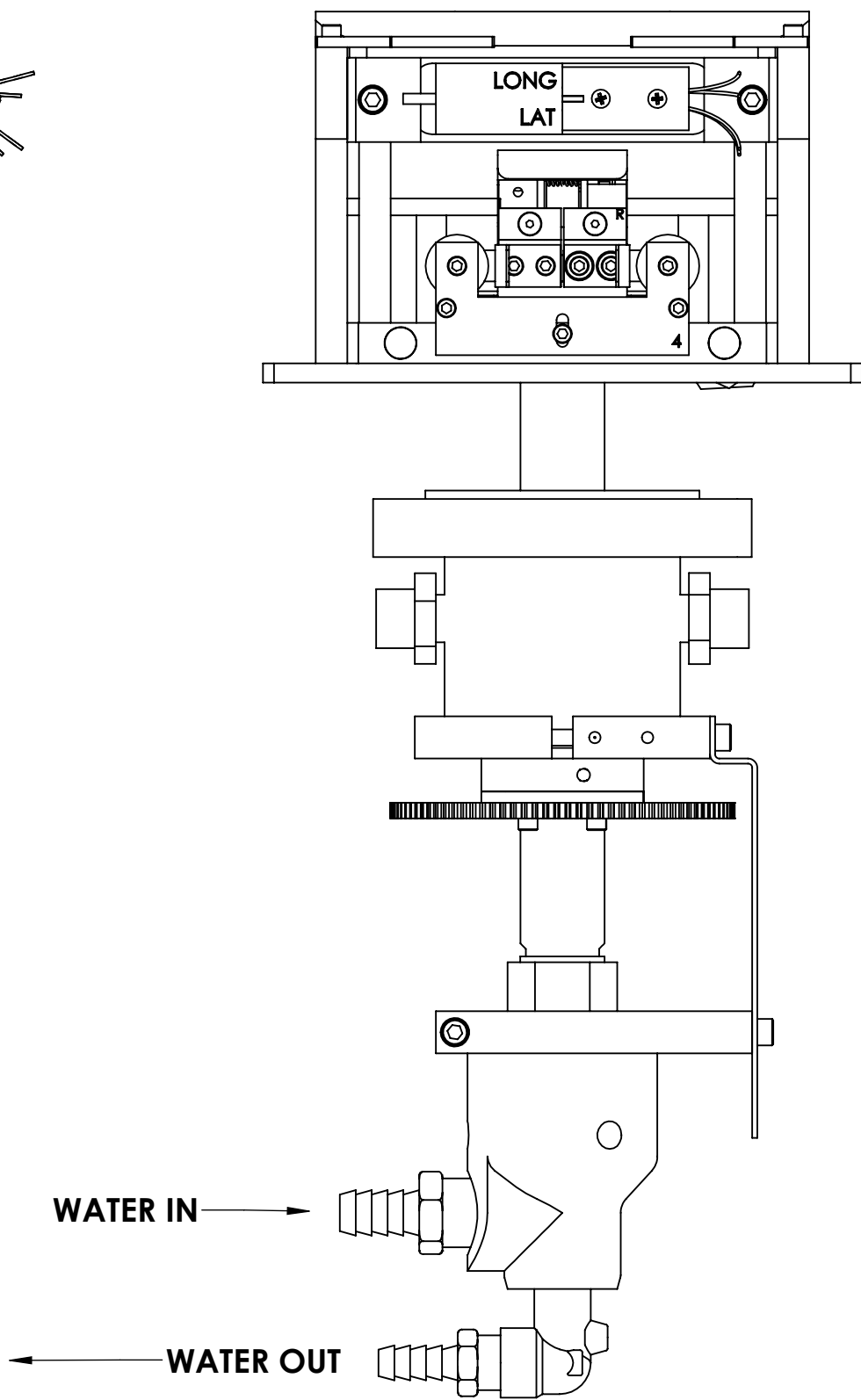
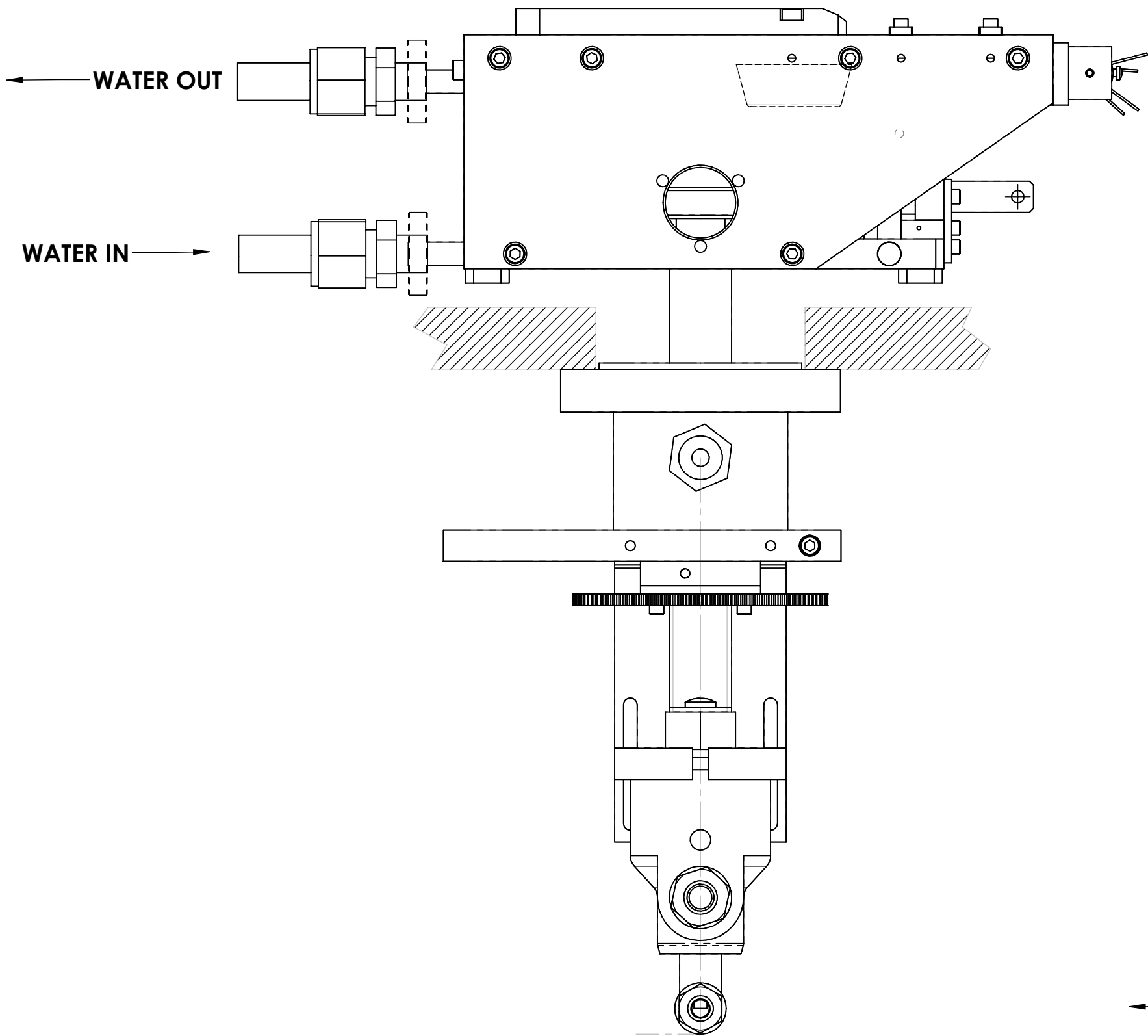
E

F

G

MODEL 269

IMPORTANT WATER LINE CONNECTION INFORMATION



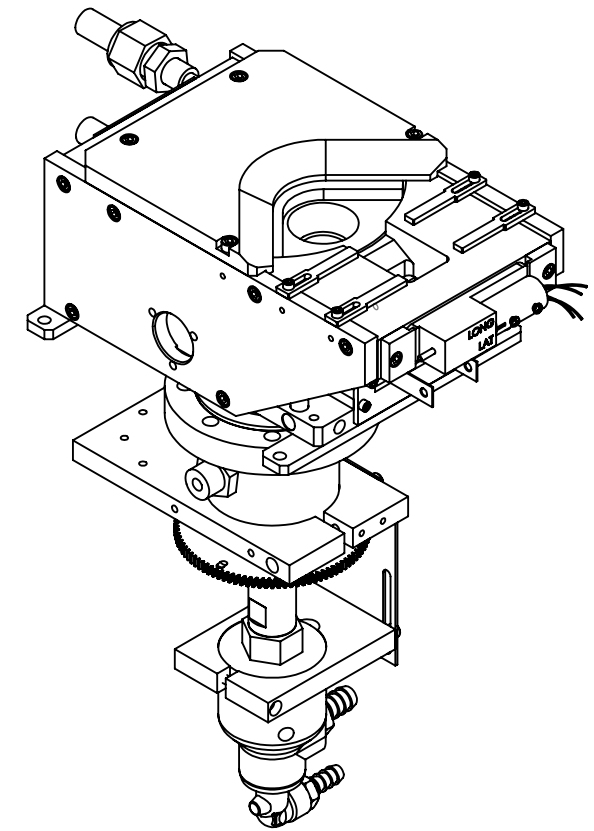
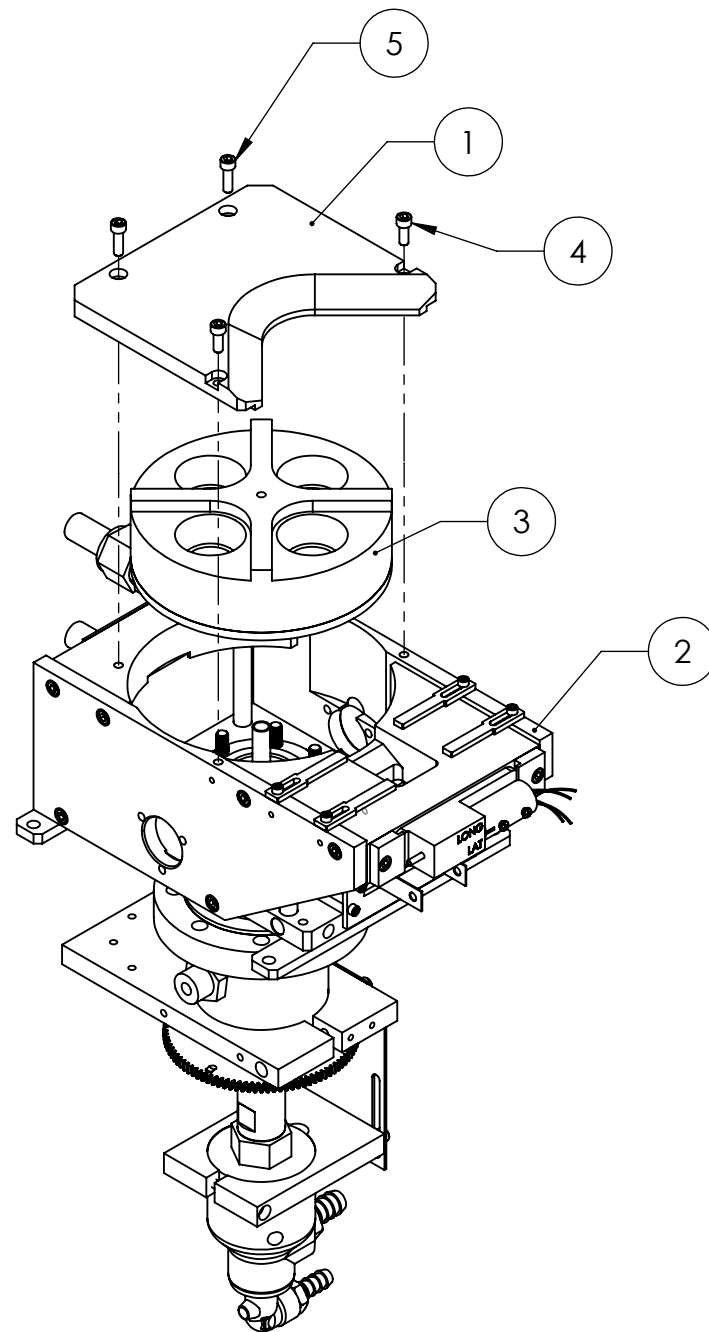
UNLESS OTHERWISE SPECIFIED GLOBAL TOLERANCES		DWG BY CHECK BY PROJ ENG MFG ENG	DATE DATE DATE DATE	MATERIAL: FINISH:	TELEMARK telemark.com	
INCHES [mm] .X +/- .03 [0.762] .XX +/- 0.01 [0.254] .XXX +/- 0.005 [0.127] ANGLES +/- .5° SURF FINISH 63 RMS		DO NOT SCALE DRAWING		THIRD ANGLE PROJECTION	MODEL 269 EB SOURCE	
CONFIDENTIAL. This document contains proprietary data of TELEMARK and is not to be copied or distributed without the prior written consent of TELEMARK. The receipt or possession of the document does not convey any rights to reproduce it, disclose its contents, or to manufacture, use or sell anything incorporating the concepts and details disclosed by it. Such concepts and details are not to be used other than for the benefit of TELEMARK and are not to be disclosed to others without the prior written consent of an officer of TELEMARK.		FILE NUMBER - 269-1135-1 INITIAL PROJECT -		SCALE 1:2 SHEET 2 of 2	DWG NO. R269-1001	REV B





Model Assemblies

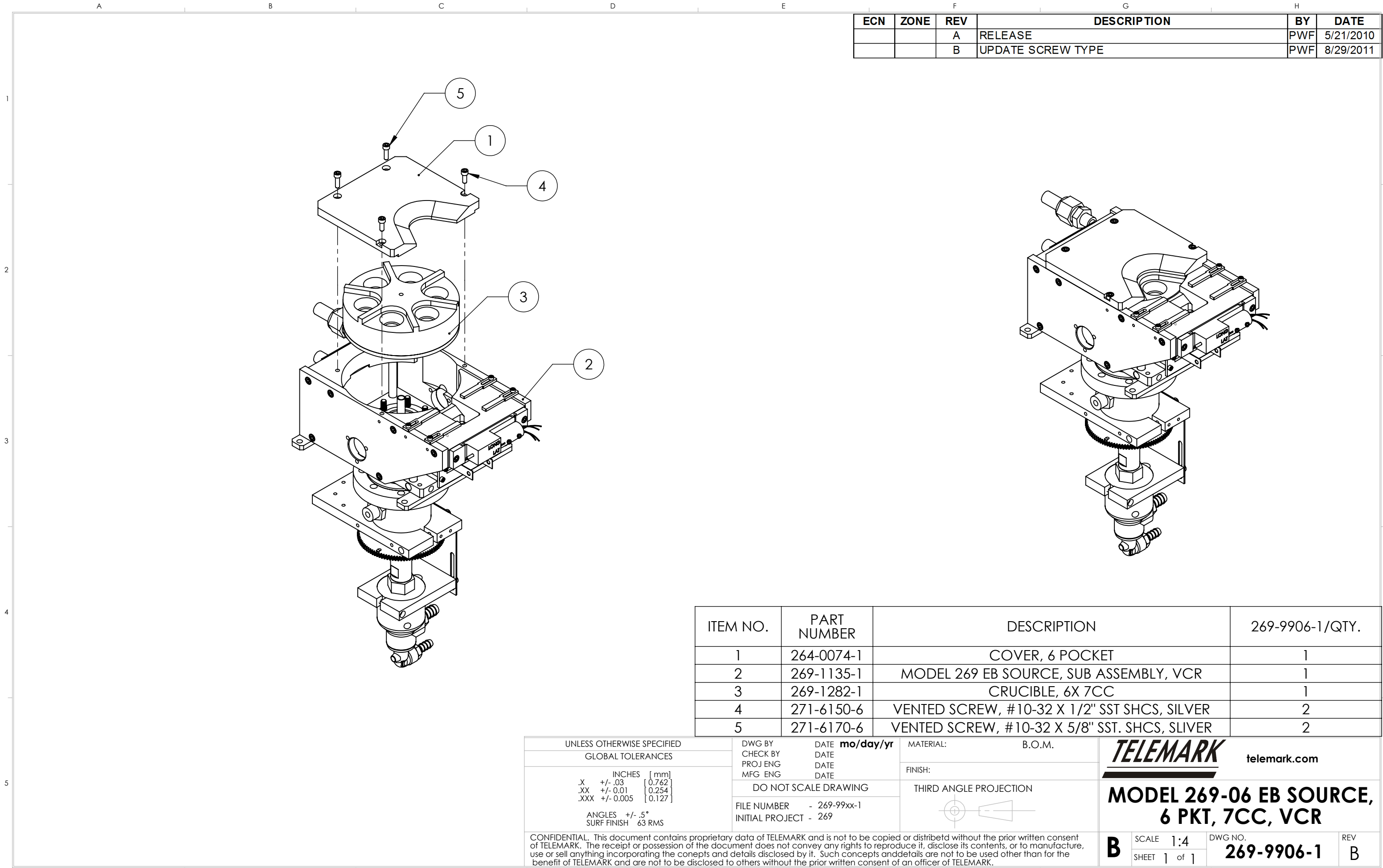
E-Beam Sources

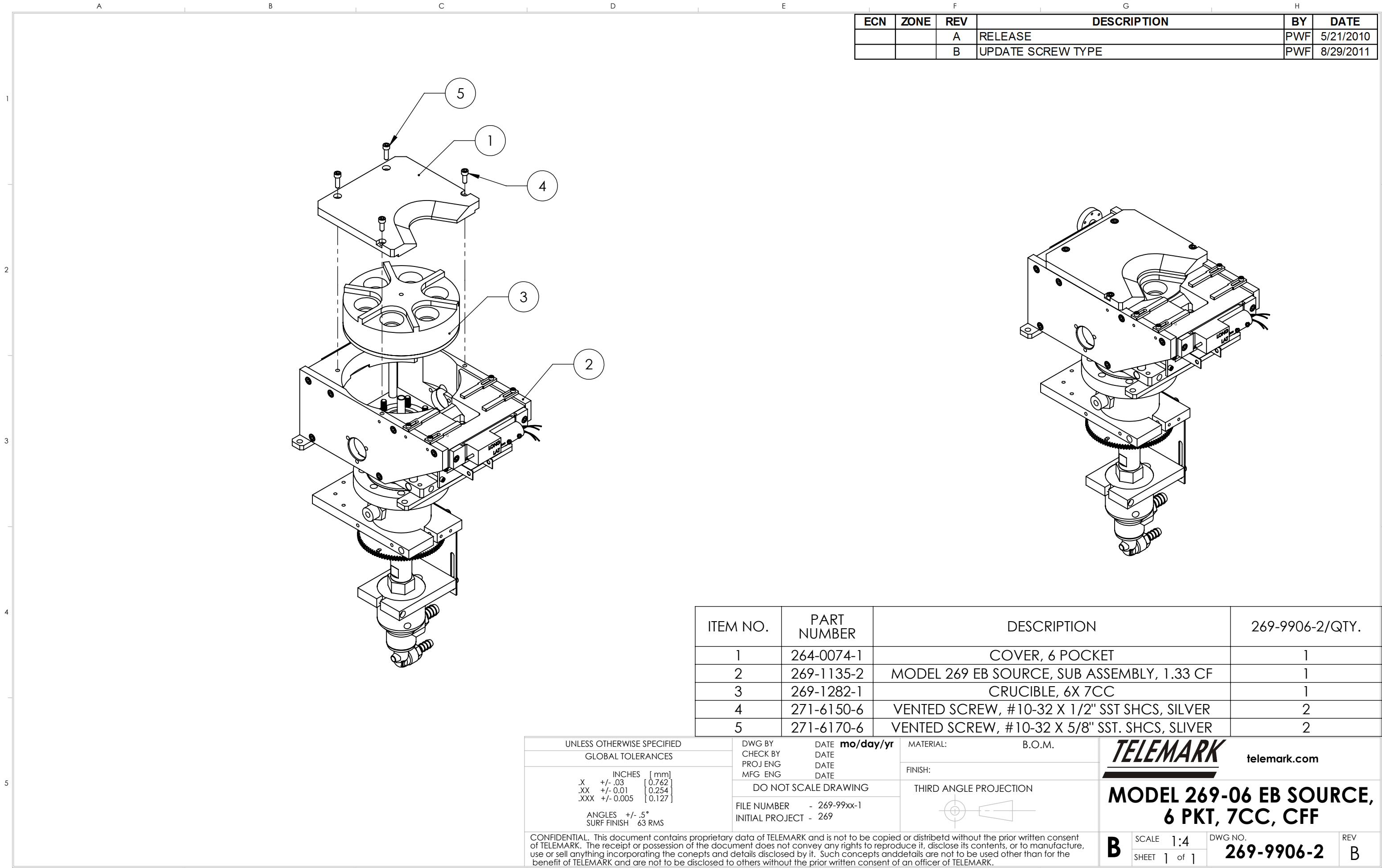
ECN	ZONE	REV	DESCRIPTION	BY	DATE
		A	RELEASE	PWF	5/21/2010
		B	UPDATE SCREW TYPE	PWF	8/29/2011



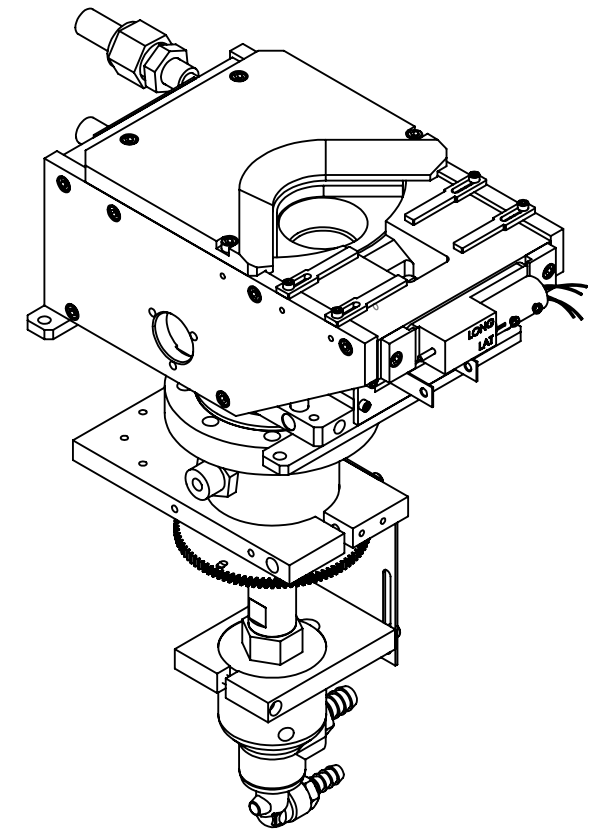
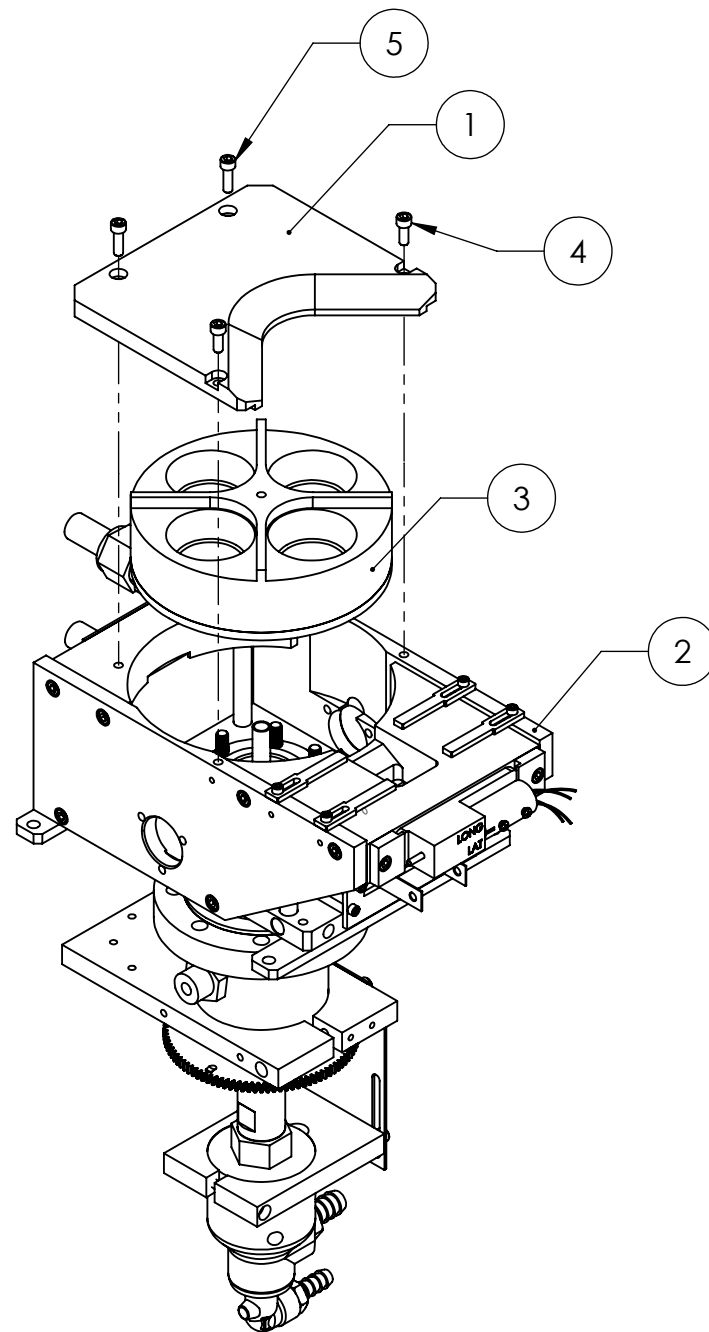
ITEM NO.	PART NUMBER	DESCRIPTION	269-9902-1/QTY.
1	264-0073-1	COVER, 4 POCKET	1
2	269-1135-1	MODEL 269 EB SOURCE, SUB ASSEMBLY, VCR	1
3	269-1264-1	CRUCIBLE, 4X 15CC	1
4	271-6150-6	VENTED SCREW, #10-32 X 1/2" SST SHCS, SILVER	2
5	271-6170-6	VENTED SCREW, #10-32 X 5/8" SST. SHCS. SLIVER	2

UNLESS OTHERWISE SPECIFIED		DWG BY	DATE	MATERIAL:	 telemark.com
GLOBAL TOLERANCES		CHECK BY	DATE	B.O.M.	
INCHES [mm] .X +/- .03 [0.762] .XX +/- 0.01 [0.254] .XXX +/- 0.005 [0.127]		PROJ ENG	DATE	FINISH:	
ANGLES +/- .5° SURF FINISH 63 RMS		MFG ENG	DATE	THIRD ANGLE PROJECTION	
		DO NOT SCALE DRAWING			
		FILE NUMBER - 269-99xx-1			
		INITIAL PROJECT - 269			
<p>CONFIDENTIAL. This document contains proprietary data of TELEMARK and is not to be copied or distributed without the prior written consent of TELEMARK. The receipt or possession of the document does not convey any rights to reproduce it, disclose its contents, or to manufacture, use or sell anything incorporating the concepts and details disclosed by it. Such concepts and details are not to be used other than for the benefit of TELEMARK and are not to be disclosed to others without the prior written consent of an officer of TELEMARK.</p>					
B	SCALE	1:4	DWG NO.	REV	
	SHEET	1 of 1	269-9902-1	B	





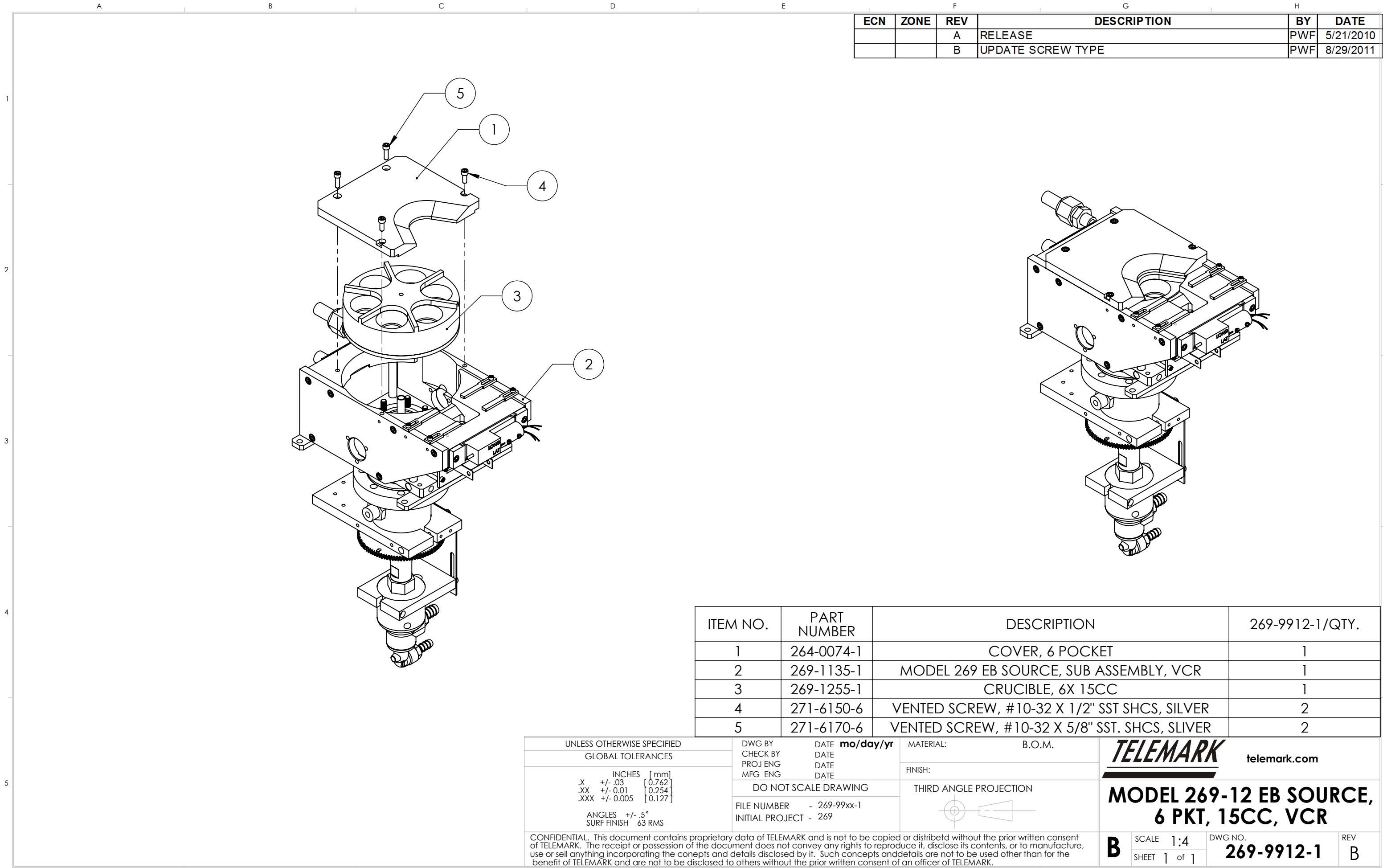


ECN	ZONE	REV	DESCRIPTION	BY	DATE
		A	RELEASE	PWF	5/21/2010
		B	UPDATE SCREW TYPE	PWF	8/29/2011



ITEM NO.	PART NUMBER	DESCRIPTION	269-9908-1/QTY.
1	264-0073-1	COVER, 4 POCKET	1
2	269-1135-1	MODEL 269 EB SOURCE, SUB ASSEMBLY, VCR	1
3	269-1220-1	CRUCIBLE, 4X 25CC	1
4	271-6150-6	VENTED SCREW, #10-32 X 1/2" SST SHCS, SILVER	2
5	271-6170-6	VENTED SCREW, #10-32 X 5/8" SST. SHCS. SLIVER	2

UNLESS OTHERWISE SPECIFIED		DWG BY DATE mo/day/yr		MATERIAL: B.O.M.		 telemark.com	
GLOBAL TOLERANCES		CHECK BY DATE		FINISH:		 THIRD ANGLE PROJECTION	
INCHES [mm]		PROJ ENG DATE					
.X +/- .03 [0.762]		MFG ENG DATE					
.XX +/- 0.01 [0.254]		DO NOT SCALE DRAWING				MODEL 269-08 EB SOURCE, 4 PKT, 25CC, VCR	
.XXX +/- 0.005 [0.127]		FILE NUMBER - 269-99xx-1					
ANGLES +/- .5°		INITIAL PROJECT - 269				B	
SURF FINISH 63 RMS						SCALE 1:4 SHEET 1 of 1	DWG NO. 269-9908-1
							REV B



1

2

3

4

5

ECN

ZONE

REV

DESCRIPTION

BY

DATE

991151

C

P/N FROM 269-1135-1 TO 269-1135-5

GPD

6/30/2022

5

1

4

3

2

ITEM NO.

PART NUMBER

DESCRIPTION

269-9914-1/QTY.

1

264-0075-1

COVER, 8 POCKET

1

2

269-1135-5

MODEL 269 EB SOURCE, SUB ASSEMBLY, VCR, 8 PKT

1

3

269-1260-1

CRUCIBLE, 8X 7CC

1

4

271-6150-6

VENTED SCREW, #10-32 X 1/2" SST SHCS, SILVER

2

5

271-6170-6

VENTED SCREW, #10-32 X 5/8" SST. SHCS, SILVER

2

UNLESS OTHERWISE SPECIFIED

GLOBAL TOLERANCES

INCHES

[mm]

.X

+/- .03

[0.762]

.XX

+/- 0.01

[0.254]

.XXX

+/- 0.005

[0.127]

ANGLES

+/- .5°

SURF FINISH

63 RMS

DWG BY

CHECK BY

PROJ ENG

MFG ENG

DATE

DATE

DATE

DATE

mo/day/yr

MATERIAL:

B.O.M.

FINISH:

THIRD ANGLE PROJECTION

FILE NUMBER

- 269-99xx-1

INITIAL PROJECT

- 269

CONFIDENTIAL. This document contains proprietary data of TELEMAR and is not to be copied or distributed without the prior written consent of TELEMAR. The receipt or possession of the document does not convey any rights to reproduce it, disclose its contents, or to manufacture, use or sell anything incorporating the concepts and details disclosed by it. Such concepts and details are not to be used other than for the benefit of TELEMAR and are not to be disclosed to others without the prior written consent of an officer of TELEMAR.

TELEMAR

telemark.com

MODEL 269-14 EB SOURCE, 8 PKT, 7CC, VCR

B

SCALE

1:4

DWG NO.

269-9914-1

REV

C

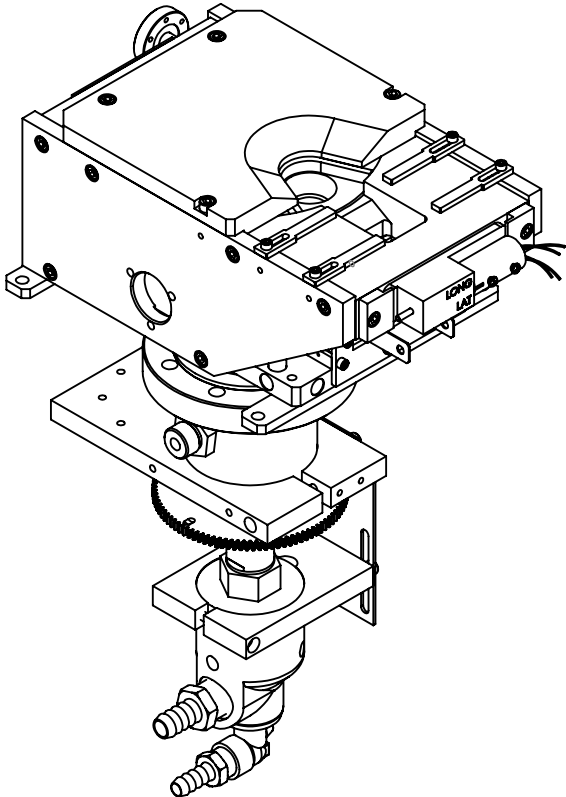
1

2

3

4

5



ECN	ZONE	REV	DESCRIPTION	BY	DATE
		A	RELEASE	PWF	5/21/2010
		B	UPDATE SCREW TYPE	PWF	8/29/2011
991151		C	P/N FROM 269-1135-1 TO 269-1135-6	GPD	6/29/2022

ITEM NO.	PART NUMBER	DESCRIPTION	269-9914-2/QTY.
1	264-0075-1	COVER, 8 POCKET	1
2	269-1135-2	MODEL 269 EB SOURCE, SUB ASSEMBLY, 1.33 CF, 8 PKT	1
3	269-1260-1	CRUCIBLE, 8X 7CC	1
4	271-6150-6	VENTED SCREW, #10-32 X 1/2" SST SHCS, SILVER	2
5	271-6170-6	VENTED SCREW, #10-32 X 5/8" SST. SHCS, SLIVER	2

UNLESS OTHERWISE SPECIFIED
GLOBAL TOLERANCES

INCHES [mm]

.X +/- .03 [0.762]

.XX +/- 0.01 [0.254]

.XXX +/- 0.005 [0.127]

ANGLES +/- .5°

SURF FINISH 63 RMS

DWG BY
CHECK BY
PROJ ENG
MFG ENG

DATE
DATE
DATE
DATE

mo/day/yr

MATERIAL: B.O.M.

FINISH:

THIRD ANGLE PROJECTION

FILE NUMBER - 269-99xx-1

INITIAL PROJECT - 269

TELEMARK

telemark.com

MODEL 269-14 EB SOURCE,
8 PKT, 7CC, CFF

B

SCALE 1:4

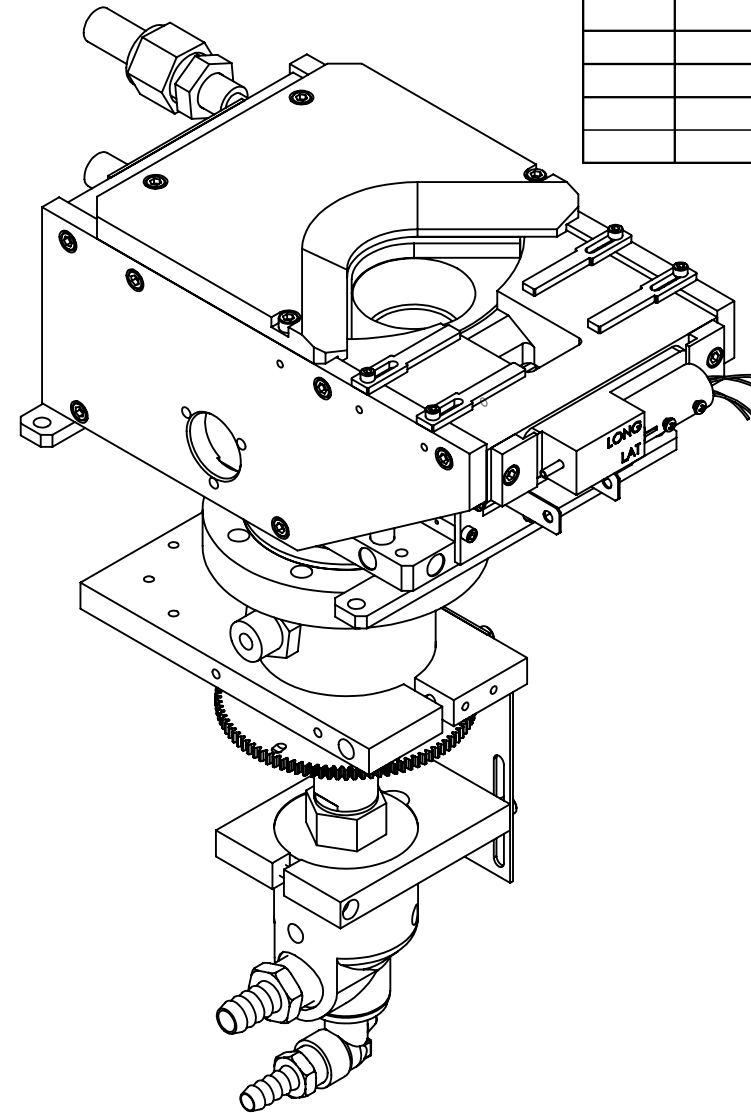
DWG NO. 269-9914-2

REV C



CONFIDENTIAL. This document contains proprietary data of TELEMARK and is not to be copied or distribetd without the prior written consent of TELEMARK. The receipt or possession of the document does not convey any rights to reproduce it, disclose its contents, or to manufacture, use or sell anything incorporating the conepts and details disclosed by it. Such concepts andndetails are not to be used other than for the benefit of TELEMARK and are not to be disclosed to others without the prior written consent of an officer of TELEMARK.

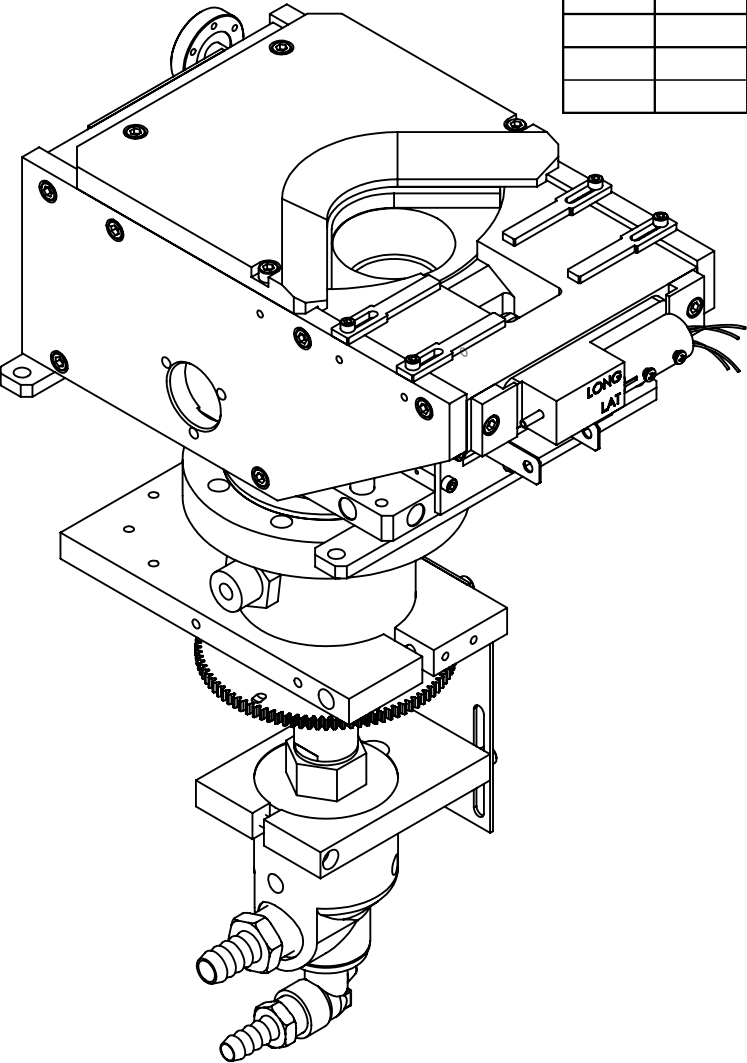
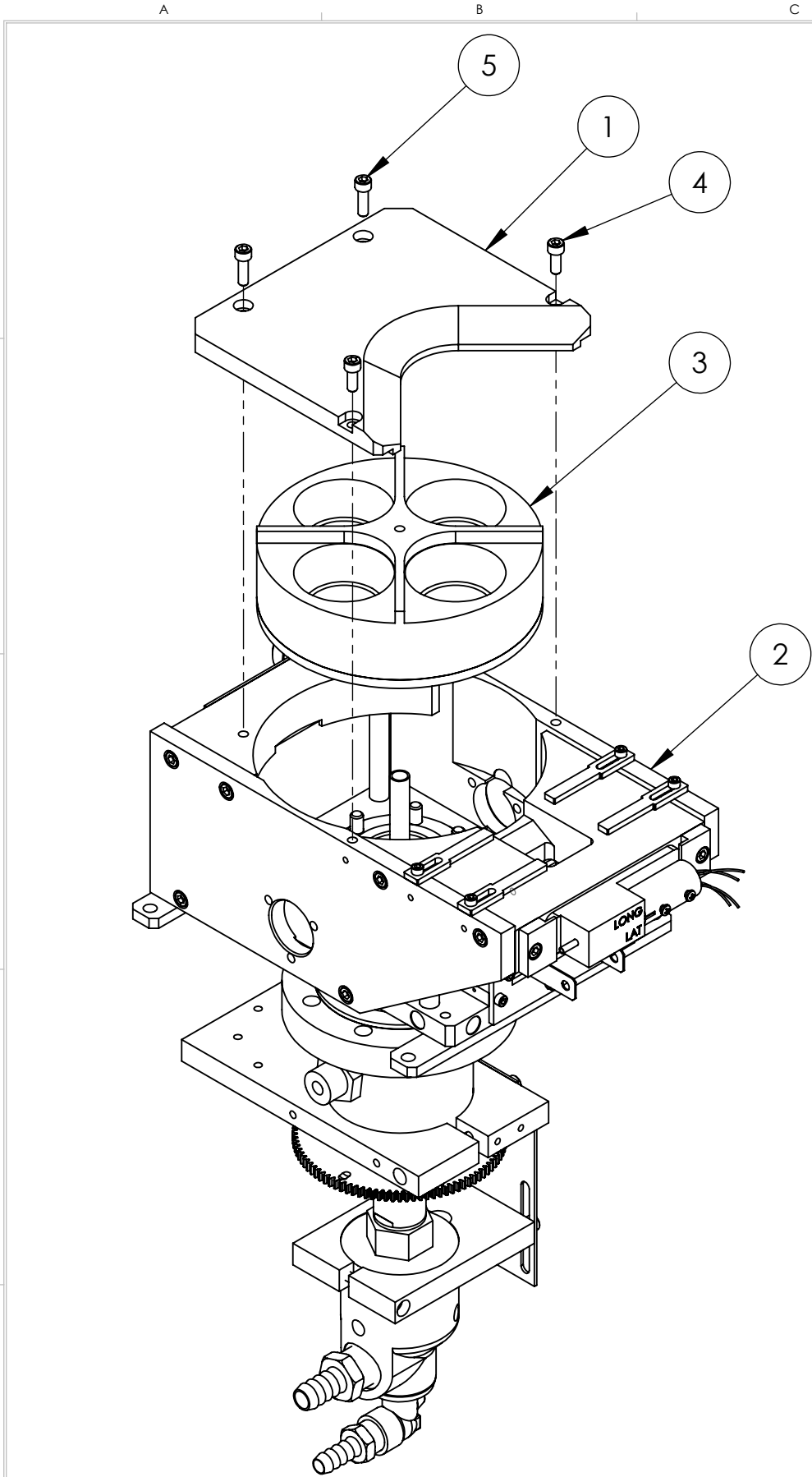


ECN	ZONE	REV	DESCRIPTION	BY	DATE
		A	RELEASE	GPD	12/10/2018



ITEM NO.	PART NUMBER	DESCRIPTION	269-9920-1/QTY.
1	264-0073-1	COVER, 4 POCKET	1
2	269-1135-1	MODEL 269 EB SOURCE	1
3	269-1221-1	CRUCIBLE, 4X 30CC	1
4	271-6150-6	VENTED SCREW, #10-32 X 1/2" SST SHCS, SILVER	2
5	271-6170-6	VENTED SCREW, #10-32 X 5/8" SST. SHCS, SLIVER	2

UNLESS OTHERWISE SPECIFIED		DWG BY G. DION DATE 12-10-2018		MATERIAL: B.O.M.		 Battle Ground, WA	
GLOBAL TOLERANCES		CHECK BY DATE PROJ ENG DATE MFG ENG DATE		FINISH:			
INCHES [mm] .X +/- .03 [0.762] .XX +/- 0.01 [0.254] .XXX +/- 0.005 [0.127]		DO NOT SCALE DRAWING		THIRD ANGLE PROJECTION			
ANGLES +/- .5° SURF FINISH 63 RMS		FILE NUMBER - 269-99xx-1 INITIAL PROJECT - 269					
CONFIDENTIAL. This document contains proprietary data of TELEMARK and is not to be copied or distributed without the prior written consent of TELEMARK. The receipt or possession of the document does not convey any rights to reproduce it, disclose its contents, or to manufacture, use or sell anything incorporating the concepts and details disclosed by it. Such concepts and details are not to be used other than for the benefit of TELEMARK and are not to be disclosed to others without the prior written consent of an officer of TELEMARK.						B	
				SCALE 1:3 SHEET 1 of 1		DWG NO. 269-9920-1	
						REV A	

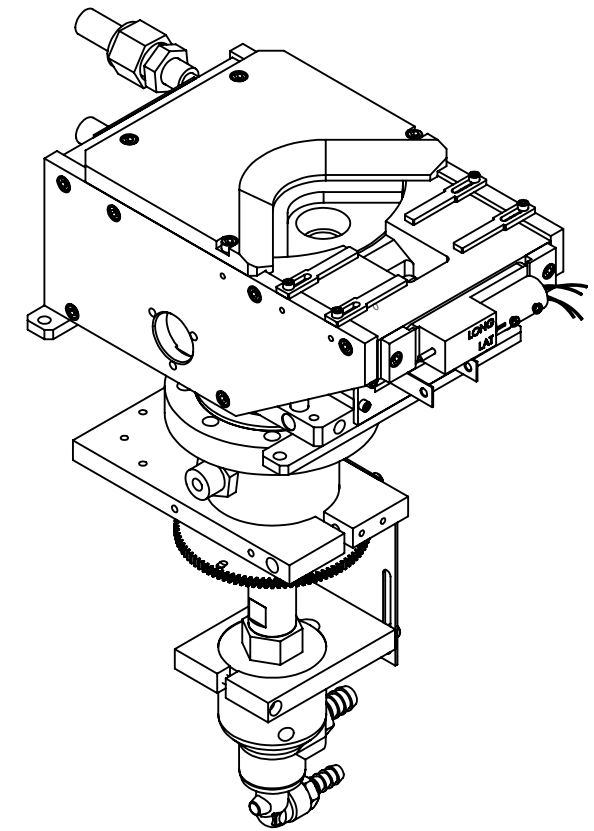
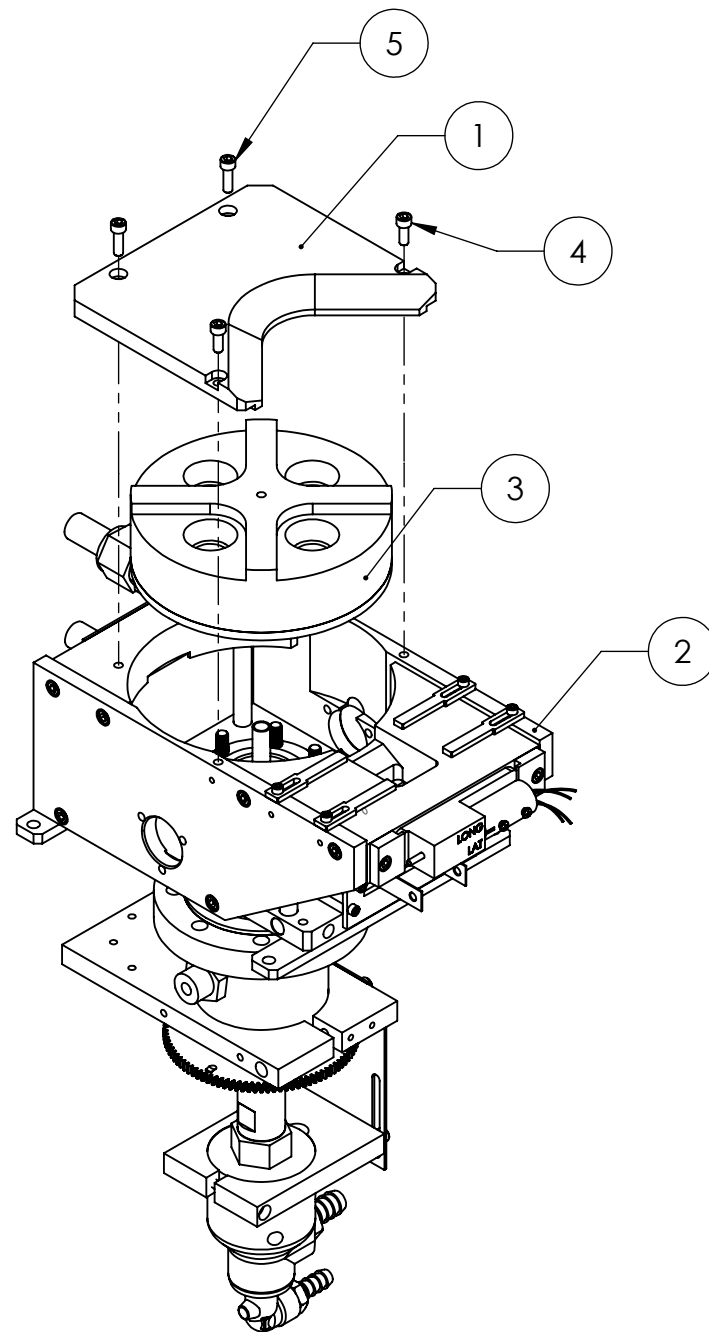


ECN	ZONE	REV	DESCRIPTION	BY	DATE
		A	RELEASE	GPD	12/10/2018


ITEM NO.	PART NUMBER	DESCRIPTION	269-9920-2/QTY.
1	264-0073-1	COVER, 4 POCKET	1
2	269-1135-2	MODEL 269 EB SOURCE	1
3	269-1221-1	CRUCIBLE, 4X 30CC	1
4	271-6150-6	VENTED SCREW, #10-32 X 1/2" SST SHCS, SILVER	2
5	271-6170-6	VENTED SCREW, #10-32 X 5/8" SST. SHCS, SLIVER	2

UNLESS OTHERWISE SPECIFIED GLOBAL TOLERANCES		DWG BY G. DION DATE 12-10-2018	MATERIAL: B.O.M.	TELEMARK Battle Ground, WA	
INCHES [mm] .X +/- .03 [0.762] .XX +/- 0.01 [0.254] .XXX +/- 0.005 [0.127] ANGLES +/- .5° SURF FINISH 63 RMS		CHECK BY DATE PROJ ENG DATE MFG ENG DATE	FINISH:		
		DO NOT SCALE DRAWING	THIRD ANGLE PROJECTION	MODEL 269-20 EB SOURCE, 4 PKT, 30cc, CFF	
CONFIDENTIAL. This document contains proprietary data of TELEMARK and is not to be copied or distribetd without the prior written consent of TELEMARK. The receipt or possession of the document does not convey any rights to reproduce it, disclose its contents, or to manufacture, use or sell anything incorporating the conepts and details disclosed by it. Such conepts andndetails are not to be used other than for the benefit of TELEMARK and are not to be disclosed to others without the prior written consent of an officer of TELEMARK.		FILE NUMBER - 269-99xx-1 INITIAL PROJECT - 269		B SCALE 1:3 SHEET 1 of 1	DWG NO. 269-9920-2 REV A

ECN	ZONE	REV	DESCRIPTION	BY	DATE
		A	RELEASE	PWF	5/21/2010
		B	UPDATE SCREW TYPE	PWF	8/29/2011



ITEM NO.	PART NUMBER	DESCRIPTION	269-9928-1/QTY.
1	264-0073-1	COVER, 4 POCKET	1
2	269-1135-1	MODEL 269 EB SOURCE, SUB ASSEMBLY, VCR	1
3	269-1245-1	CRUCIBLE, 4X 7CC	1
4	271-6150-6	VENTED SCREW, #10-32 X 1/2" SST SHCS, SILVER	2
5	271-6170-6	VENTED SCREW, #10-32 X 5/8" SST. SHCS, SLIVER	2

UNLESS OTHERWISE SPECIFIED		DWG BY		DATE		MATERIAL:		B.O.M.		<div>TELEMARK</div>	
GLOBAL TOLERANCES		CHECK BY		DATE						telemark.com	
		PROJ ENG		DATE		FINISH:					
		MFG ENG		DATE							
INCHES [mm]		DO NOT SCALE DRAWING		THIRD ANGLE PROJECTION				MODEL 269-28 EB SOURCE, 4 PKT, 7CC, VCR			
.X +/- .03 [0.762]		FILE NUMBER - 269-99xx-1									
.XX +/- 0.01 [0.254]		INITIAL PROJECT - 269									
.XXX +/- 0.005 [0.127]											
ANGLES +/- .5°											
SURF FINISH 63 RMS											
<p>CONFIDENTIAL. This document contains proprietary data of TELEMARK and is not to be copied or distributed without the prior written consent of TELEMARK. The receipt or possession of the document does not convey any rights to reproduce it, disclose its contents, or to manufacture, use or sell anything incorporating the concepts and details disclosed by it. Such concepts and details are not to be used other than for the benefit of TELEMARK and are not to be disclosed to others without the prior written consent of an officer of TELEMARK.</p>											
								B		SCALE 1:4	DWG NO.
										SHEET 1 of 1	269-9928-1
											REV B



Common Assemblies

E-Beam Source

A

B

C

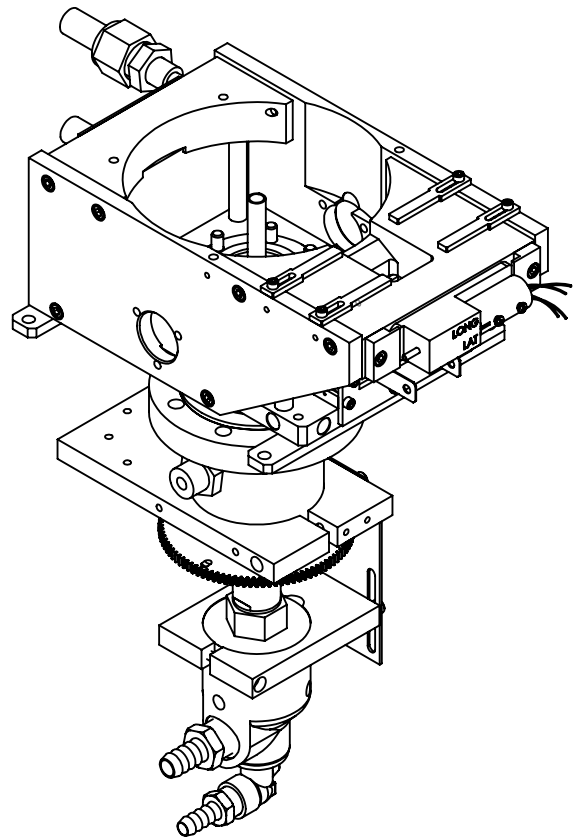
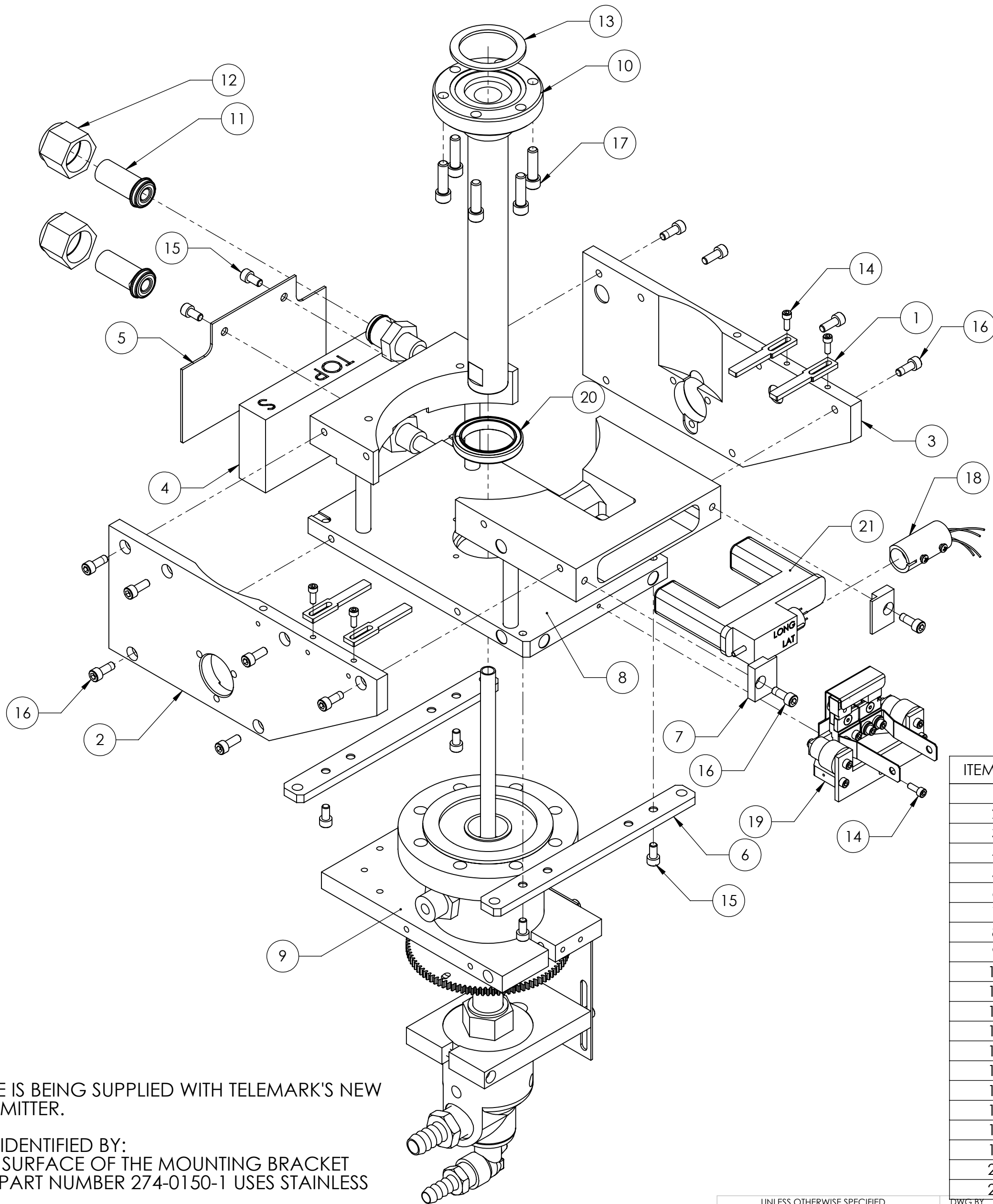
D

E

F

G

ECN	ZONE	REV	DESCRIPTION	BY	DATE
		A	RELEASE	PWF	5/19/2010
		B	UPDATE SCREW TYPE	PWF	8/29/2011
		B1	UPDATE SCREW TYPE	PWF	6/14/2012
		C	CHANGE EMITTER TO 273-0150-9	PWF	8/21/2012
		D	CHANGED EMITTER FROM 273-0150-9 TO 274-0150-3 & ADDED EMITTER NOTE	GPD	3/27/2019



ITEM NO.	PART NUMBER	DESCRIPTION	269-1135-1/QTY.
1	263-0053-1	POLE PIECE	4
2	264-0058-1	MAGNET ARM, LEFT	1
3	264-0059-1	MAGNET ARM, RIGHT	1
4	265-0055-1	PERMANENT MAGNET	1
5	265-0083-1	REAR SHIELD	1
6	265-0088-1	MOUNTING STRAP	2
7	269-1078-1	COIL CLAMP	2
8	269-1112-2	BASE PLATE ASSEMBLY, VCR	1
9	269-1140-1	EXTERNAL ASSEMBLY	1
10	269-1443-1	CRUCIBLE BASE ASSEMBLY	1
11	271-0651-7	WATER FITTING, GLAND, VCR HF 3/8"	2
12	271-0650-3	WATER FITTING F NUT, VCR, 3/8"/1/2"	2
13	271-3601-1	GASKET, CFF 2.75"	1
14	271-6050-6	VENTED SCREW, #6-32 X 3/8" SST SHCS, SILVER	5
15	271-6145-6	VENTED SCREW, #10-32 X3/8" SST SHCS, SILVER	6
16	271-6150-6	VENTED SCREW, #10-32 X 1/2" SST SHCS, SILVER	14
17	271-6186-6	VENTED SCREW, 1/4-20 UNC X 7/8" SST SHCS, SILVER	6
18	272-0125-2	COIL CONNECTOR ASSEMBLY	1
19	274-0150-3	EMITTER ASSEMBLY	1
20	281-0035-1	BEARING, 1-1/8	1
21	282-0080-1	COIL ASSEMBLY	1

NOTE:
THIS MODEL SOURCE IS BEING SUPPLIED WITH TELEMAR'S NEW ARC SUPPRESSION EMITTER.

THIS NEW EMITTER IS IDENTIFIED BY:
A "4" ON THE FRONT SURFACE OF THE MOUNTING BRACKET
STANDARD EMITTER PART NUMBER 274-0150-1 USES STAINLESS
STEEL SCREWS.
UHV EMITTER PART NUMBER 274-0150-3 USES SILVER-PLATED
SCREWS.

THE PRIMARY COMPONENTS IN THIS EMITTER ARE DIFFERENT
FROM THOSE IN OUR LEGACY EMITTER AND ARE NOT
INTERCHANGEABLE WITH THOSE OF THE LEGACY EMITTER.

UNLESS OTHERWISE SPECIFIED
GLOBAL TOLERANCES

INCHES [mm]
X +/- .03 [0.762]
.XX +/- .01 [0.254]
.XXX +/- .005 [0.127]

ANGLES +/- .5°
SURF FINISH .63 RMS

DWG BY
CHECK BY
PROJ ENG
MFG ENG

DO NOT SCALE DRAWING

FILE NUMBER - 269-1135-1
INITIAL PROJECT -

DATE
DATE
DATE

MATERIAL:

FINISH:

THIRD ANGLE PROJECTION

CONFIDENTIAL. This document contains proprietary data of TELEMAR and is not to be copied or distributed without the prior written consent of TELEMAR. The receipt or possession of the document does not convey any rights to reproduce it, disclose its contents, or to manufacture, use or sell anything incorporating the concepts and details disclosed by it. Such concepts and details are not to be used other than for the benefit of TELEMAR and are not to be disclosed to others without the prior written consent of an officer of TELEMAR.

TELEMAR

telemark.com

**MODEL 269 EB SOURCE
SUB ASSEMBLY, VCR**

SCALE 1:2
SHEET 1 of 1

DWG NO.
269-1135-1

REV
D

A

B

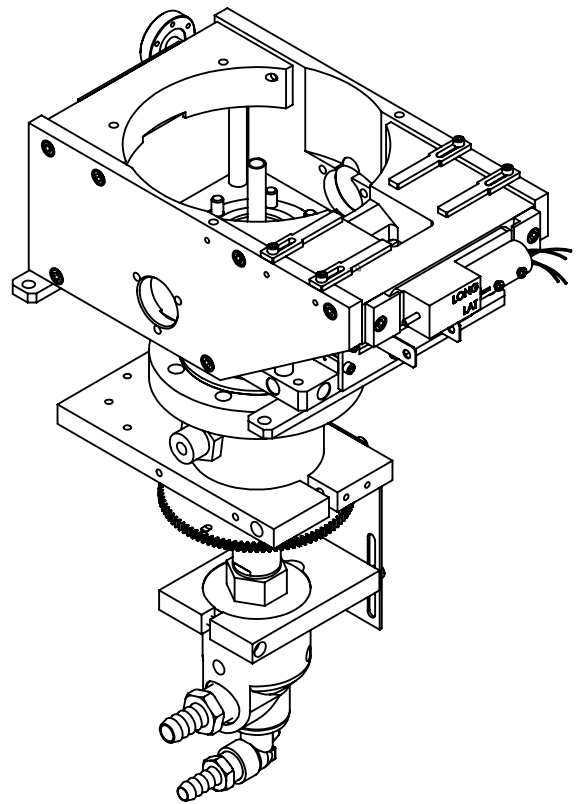
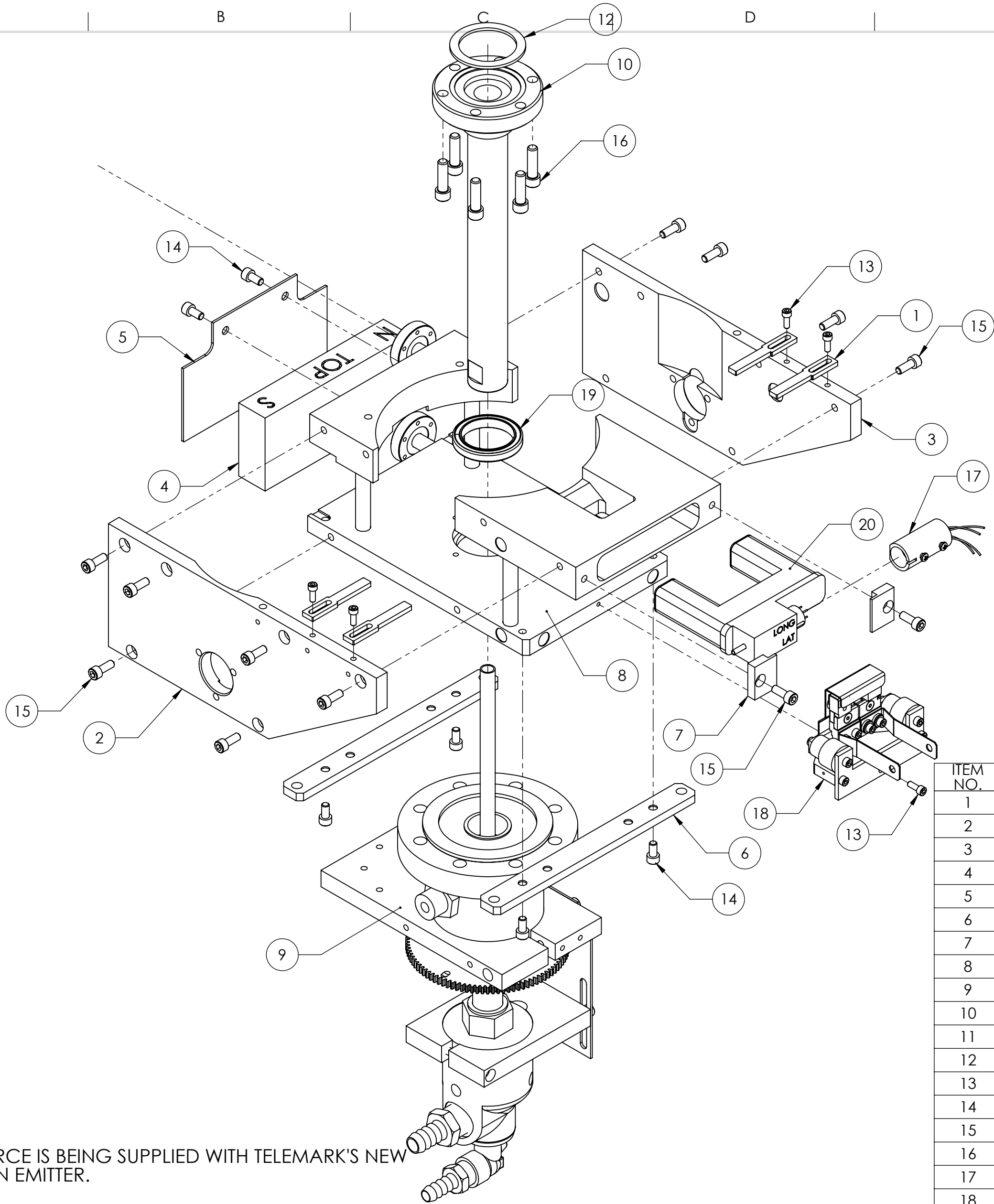
D

E

F

G

ECN	ZONE	REV	DESCRIPTION	BY	DATE
		A	RELEASE	PWF	5/19/2010
		B	UPDATE SCREW TYPE	PWF	8/29/2011
		B1	UPDATE SCREW TYPE	PWF	6/14/2012
		C	CHANGE EMITTER TO 273-0150-9	PWF	8/21/2013
		D	CHANGED EMITTER FROM 273-0150-9 TO 274-0150-3 & ADDED EMITTER NOTE	GPD	3/27/2019




ITEM NO.	PART NUMBER	DESCRIPTION	269-1135-2/QTY.
1	263-0053-1	POLE PIECE	4
2	264-0058-1	MAGNET ARM, LEFT	1
3	264-0059-1	MAGNET ARM, RIGHT	1
4	265-0055-1	PERMANENT MAGNET	1
5	265-0083-1	REAR SHIELD	1
6	265-0088-1	MOUNTING STRAP	2
7	269-1078-1	COIL CLAMP	2
8	269-1112-2	BASE PLATE ASSEMBLY, VCR	1
9	269-1140-1	EXTERNAL ASSEMBLY	1
10	269-1443-1	CRUCIBLE BASE ASSEMBLY	1
11	271-3501-1	GASKET, VCR 3/8"	2
12	271-3601-1	GASKET, CFF 2.75"	1
13	271-6050-6	VENTED SCREW, #6-32 X 3/8" SST SHCS, SILVER	5
14	271-6145-6	VENTED SCREW, #10-32 X3/8" SST SHCS, SILVER	6
15	271-6150-6	VENTED SCREW, #10-32 X 1/2" SST SHCS, SILVER	14
16	271-6186-6	VENTED SCREW, 1/4-20 UNC X 7/8" SST SHCS, SILVER	6
17	272-0125-2	COIL CONNECTOR ASSEMBLY	1
18	274-0150-3	EMITTER ASSEMBLY	1
19	281-0035-1	BEARING, 1-1/8	1
20	282-0080-1	COIL ASSEMBLY	1

NOTE:
THIS MODEL SOURCE IS BEING SUPPLIED WITH TELEMAR'S NEW ARC SUPPRESSION EMITTER.

THIS NEW EMITTER IS IDENTIFIED BY:
A "4" ON THE FRONT SURFACE OF THE MOUNTING BRACKET
STANDARD EMITTER PART NUMBER 274-0150-1 USES STAINLESS
STEEL SCREWS.
UHV EMITTER PART NUMBER 274-0150-3 USES SILVER-PLATED
SCREWS.

THE PRIMARY COMPONENTS IN THIS EMITTER ARE DIFFERENT
FROM THOSE IN OUR LEGACY EMITTER AND ARE NOT
INTERCHANGEABLE WITH THOSE OF THE LEGACY EMITTER.

UNLESS OTHERWISE SPECIFIED		DWG BY		DATE		mo/day/yr		MATERIAL:		<div>TELEMARK</div> <div>telemark.com</div>	
GLOBAL TOLERANCES		CHECK BY		DATE							
		PROJ ENG		DATE				FINISH:			
		MFG ENG		DATE							
INCHES [mm]		DO NOT SCALE DRAWING		THIRD ANGLE PROJECTION							
X +/- .03 [0.762]		FILE NUMBER - 269-1135-1								MODEL 269 EB SOURCE SUB ASSEMBLY, 1.33 CF	
.XX +/- 0.01 [0.254]		INITIAL PROJECT -									
.XXX +/- 0.005 [0.127]											
ANGLES +/- .5°											
SURF FINISH 63 RMS											
CONFIDENTIAL. This document contains proprietary data of TELEMARK and is not to be copied or distributed without the prior written consent of TELEMARK. The receipt or possession of the document does not convey any rights to reproduce it, disclose its contents, or to manufacture, use or sell anything incorporating the concepts and details disclosed by it. Such concepts and details are not to be used other than for the benefit of TELEMARK and are not to be disclosed to others without the prior written consent of an officer of TELEMARK.											
<div>C</div>		SCALE 1:2		DWG NO.		REV					
		SHEET 1 of 1		269-1135-2		D					

A

B

C

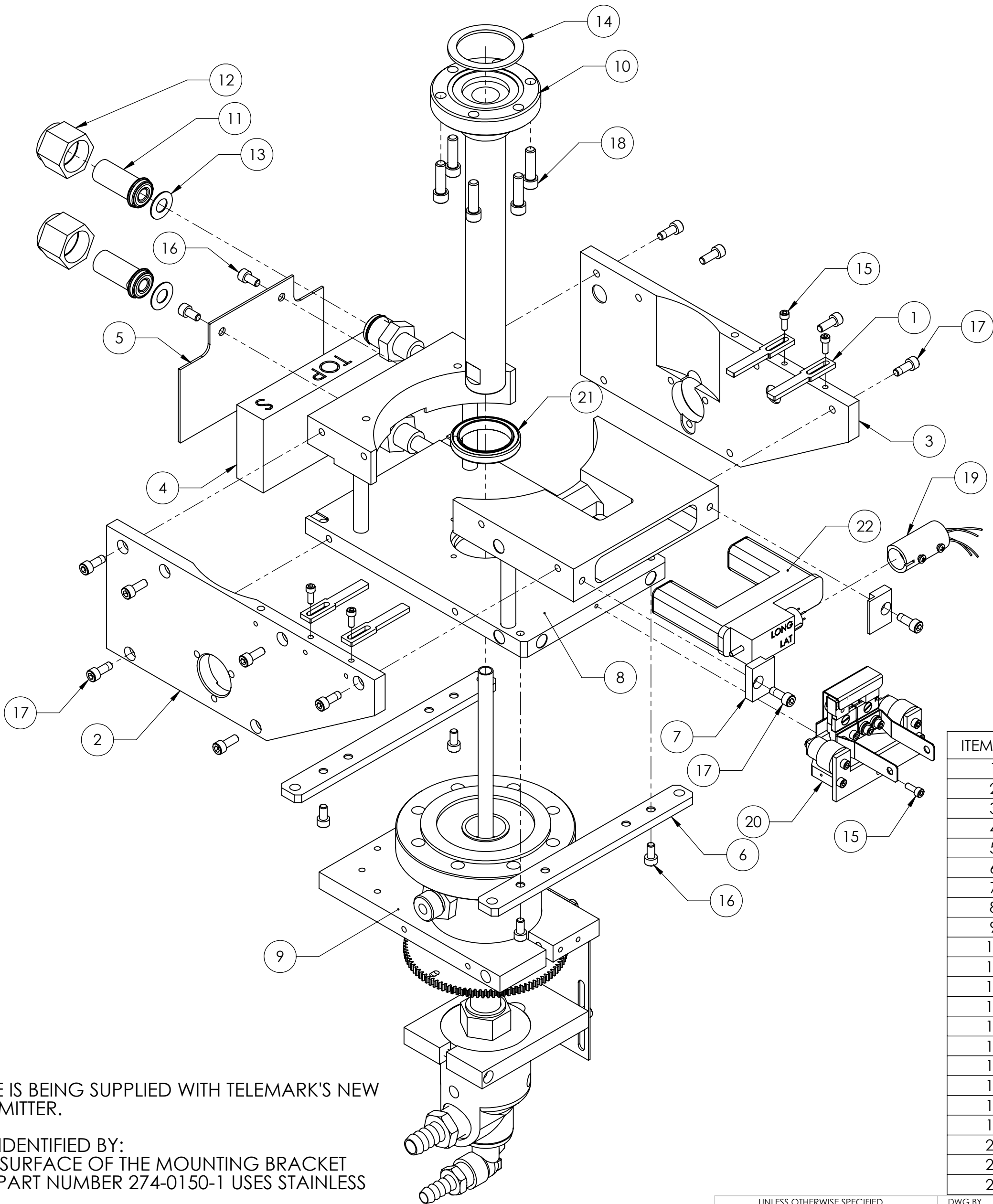
D

E

F

G

ECN	ZONE	REV	DESCRIPTION	BY	DATE
991151		A	RELEASE	GPD	6/29/2022




NOTE:
THIS MODEL SOURCE IS BEING SUPPLIED WITH TELEMAR'S NEW ARC SUPPRESSION EMITTER.

THIS NEW EMITTER IS IDENTIFIED BY:
A "4" ON THE FRONT SURFACE OF THE MOUNTING BRACKET
STANDARD EMITTER PART NUMBER 274-0150-1 USES STAINLESS
STEEL SCREWS.
UHV EMITTER PART NUMBER 274-0150-3 USES SILVER-PLATED
SCREWS.

THE PRIMARY COMPONENTS IN THIS EMITTER ARE DIFFERENT
FROM THOSE IN OUR LEGACY EMITTER AND ARE NOT
INTERCHANGEABLE WITH THOSE OF THE LEGACY EMITTER.

ITEM NO.	PART NUMBER	DESCRIPTION	269-1135-1/QTY.
1	263-0053-1	POLE PIECE	4
2	264-0058-1	MAGNET ARM, LEFT	1
3	264-0059-1	MAGNET ARM, RIGHT	1
4	265-0055-1	PERMANENT MAGNET	1
5	265-0083-1	REAR SHIELD	1
6	265-0088-1	MOUNTING STRAP	2
7	269-1078-1	COIL CLAMP	2
8	269-1112-2	BASE PLATE ASSEMBLY, VCR	1
9	269-1140-3	EXTERNAL ASSEMBLY, 8 PKT	1
10	269-1443-1	CRUCIBLE BASE ASSEMBLY	1
11	271-0651-7	WATER FITTING, GLAND, VCR HF 3/8"	2
12	271-0650-3	WATER FITTING F NUT, VCR, 3/8"/1/2"	2
13	271-3501-1	GASKET, VCR 3/8"	2
14	271-3601-1	GASKET, CFF 2.75"	1
15	271-6050-6	VENTED SCREW, #6-32 X 3/8" SST SHCS, SILVER	5
16	271-6145-6	VENTED SCREW, #10-32 X3/8" SST SHCS, SILVER	6
17	271-6150-6	VENTED SCREW, #10-32 X 1/2" SST SHCS, SILVER	14
18	271-6186-6	VENTED SCREW, 1/4-20 UNC X 7/8" SST SHCS, SILVER	6
19	272-0125-2	COIL CONNECTOR ASSEMBLY	1
20	274-0150-3	EMITTER ASSEMBLY	1
21	281-0035-1	BEARING, 1-1/8	1
22	282-0080-1	COIL ASSEMBLY	1

UNLESS OTHERWISE SPECIFIED		DWG BY	DATE	MATERIAL:
GLOBAL TOLERANCES		CHECK BY	DATE	
		PROJ ENG	DATE	FINISH:
		MFG ENG	DATE	
INCHES [mm]		DO NOT SCALE DRAWING		THIRD ANGLE PROJECTION
.X +/- .03 [0.762]		FILE NUMBER - 269-1135-1		
.XX +/- .01 [0.254]		INITIAL PROJECT -		
.XXX +/- .005 [0.127]				
ANGLES +/- .5°				
SURF FINISH 63 RMS				
CONFIDENTIAL. This document contains proprietary data of TELEMAR and is not to be copied or distributed without the prior written consent of TELEMAR. The receipt or possession of the document does not convey any rights to reproduce it, disclose its contents, or to manufacture, use or sell anything incorporating the concepts and details disclosed by it. Such concepts and details are not to be used other than for the benefit of TELEMAR and are not to be disclosed to others without the prior written consent of an officer of TELEMAR.				

TELEMAR telemark.com	
MODEL 269 EB SOURCE SUB ASSEMBLY, VCR, 8 PKT	
SCALE 1:2 SHEET 1 of 1	DWG NO. 269-1135-5 REV A

A

B

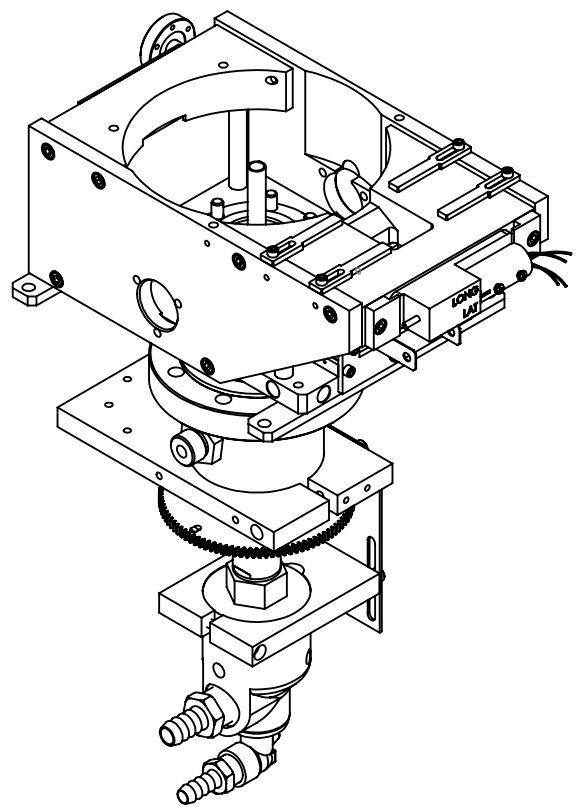
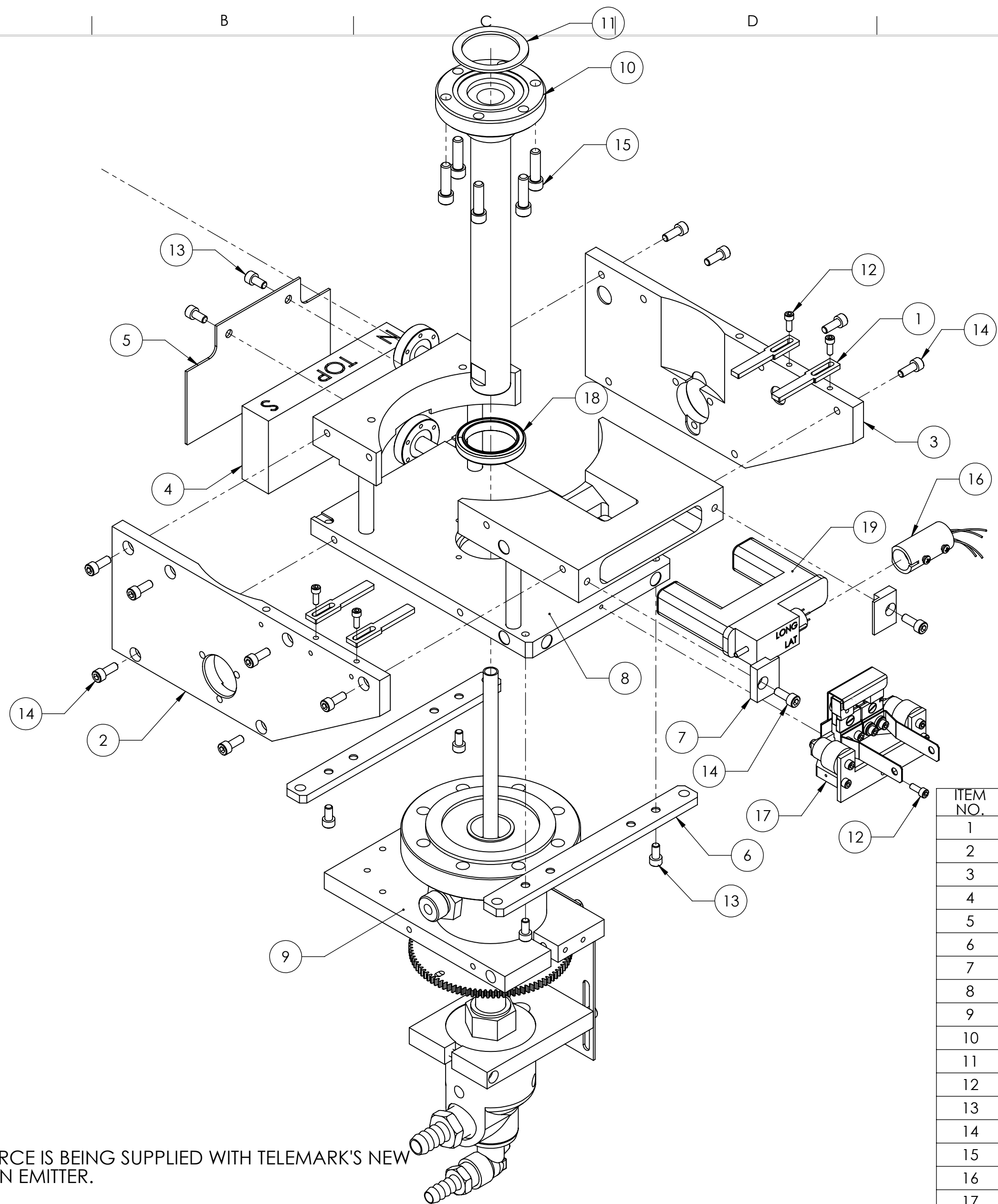
D

E

F

G

ECN	ZONE	REV	DESCRIPTION	BY	DATE
		A	RELEASE	GPD	6/29/2022



ITEM NO.	PART NUMBER	DESCRIPTION	269-1135-2/QTY.
1	263-0053-1	POLE PIECE	4
2	264-0058-1	MAGNET ARM, LEFT	1
3	264-0059-1	MAGNET ARM, RIGHT	1
4	265-0055-1	PERMANENT MAGNET	1
5	265-0083-1	REAR SHIELD	1
6	265-0088-1	MOUNTING STRAP	2
7	269-1078-1	COIL CLAMP	2
8	269-1112-3	BASE PLATE ASSEMBLY, 1.33 CF	1
9	269-1140-3	EXTERNAL ASSEMBLY, 8 PKT	1
10	269-1443-1	CRUCIBLE BASE ASSEMBLY	1
11	271-3601-1	GASKET, CFF 2.75"	1
12	271-6050-6	VENTED SCREW, #6-32 X 3/8" SST SHCS, SILVER	5
13	271-6145-6	VENTED SCREW, #10-32 X3/8" SST SHCS, SILVER	6
14	271-6150-6	VENTED SCREW, #10-32 X 1/2" SST SHCS, SILVER	14
15	271-6186-6	VENTED SCREW, 1/4-20 UNC X 7/8" SST SHCS, SILVER	6
16	272-0125-2	COIL CONNECTOR ASSEMBLY	1
17	274-0150-3	EMITTER ASSEMBLY	1
18	281-0035-1	BEARING, 1-1/8	1
19	282-0080-1	COIL ASSEMBLY	1

NOTE:
THIS MODEL SOURCE IS BEING SUPPLIED WITH TELEMAR'S NEW ARC SUPPRESSION EMITTER.

THIS NEW EMITTER IS IDENTIFIED BY:
A "4" ON THE FRONT SURFACE OF THE MOUNTING BRACKET
STANDARD EMITTER PART NUMBER 274-0150-1 USES STAINLESS
STEEL SCREWS.
UHV EMITTER PART NUMBER 274-0150-3 USES SILVER-PLATED
SCREWS.

THE PRIMARY COMPONENTS IN THIS EMITTER ARE DIFFERENT
FROM THOSE IN OUR LEGACY EMITTER AND ARE NOT
INTERCHANGEABLE WITH THOSE OF THE LEGACY EMITTER.

UNLESS OTHERWISE SPECIFIED
GLOBAL TOLERANCES

INCHES [mm]
X +/- .03 [0.762]
.XX +/- .01 [0.254]
.XXX +/- .005 [0.127]

ANGLES +/- .5°
SURF FINISH .63 RMS

DWG BY
CHECK BY
PROJ ENG
MFG ENG

DATE
DATE
DATE
DATE

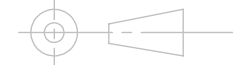
DO NOT SCALE DRAWING

FILE NUMBER - 269-1135-1
INITIAL PROJECT -

MATERIAL:

FINISH:

THIRD ANGLE PROJECTION



TELEMAR

telemark.com

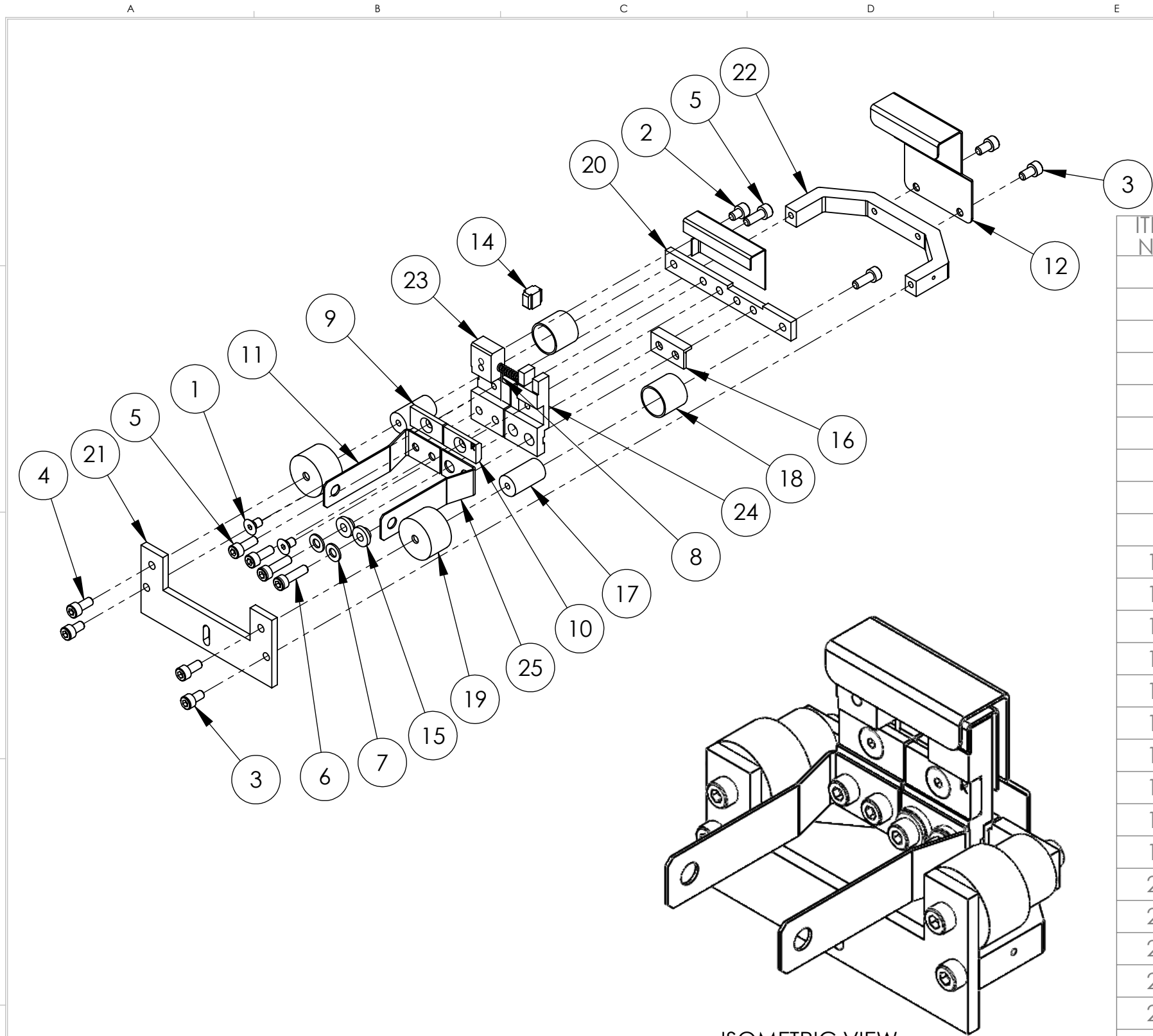
**MODEL 269 EB SOURCE
SUB ASSEMBLY, 1.33 CF, 8 PKT**

SCALE 1:2
SHEET 1 of 1

DWG NO. 269-1135-6

REV A

CONFIDENTIAL. This document contains proprietary data of TELEMAR and is not to be copied or distributed without the prior written consent of TELEMAR. The receipt or possession of the document does not convey any rights to reproduce it, disclose its contents, or to manufacture, use or sell anything incorporating the concepts and details disclosed by it. Such concepts and details are not to be used other than for the benefit of TELEMAR and are not to be disclosed to others without the prior written consent of an officer of TELEMAR.



ISOMETRIC VIEW

ECN	ZONE	REV	DESCRIPTION	BY	DATE
		A	RELEASE	GPD	6/19/2017
		B	REVISED PARTS	GPD	10/2/2017
990811		C	P/N FROM 271-6050-6 TO 271-6040-6, 2 PLACES	GPD	2/1/2018

ITEM NO.	PART NUMBER	DESCRIPTION	QTY.
1	271-6010-5	SCREW, #6-32 X 1/4" SLOT FLAT HEAD, Ti	2
2	271-6020-5	SCREW, #6-32 X 3/16" TI SHCS	1
3	271-6030-6	VENTED SCREW, #6-32 X 1/4" SST SHCS, SILVER	4
4	271-6040-6	VENTED SCREW, #6-32 X 5/16 SST. SHCS, SILVER	2
5	271-6050-6	VENTED SCREW, #6-32 X 3/8" SST SHCS, SILVER	4
6	271-6060-6	VENTED SCREW, #6-32 X 1/2" SST SHCS, SILVER	2
7	271-6242-1	FLAT WASHER, #6 SST	2
8	273-0001-1	FILAMENT, 7-1/2 TURN	1
9	273-0033-3	FILAMENT CLAMP, LEFT	1
10	273-0033-4	FILAMENT CLAMP, RIGHT	1
11	273-0035-1	EMITTER BUS BAR, LEFT	1
12	274-0003-7	ANODE	1
13	274-0004-7	BEAM FORMER	1
14	274-0005-1	INSULATOR, CROSS	1
15	274-0006-1	INSULATOR, COLLAR	2
16	274-0008-1	INSULATOR, L	1
17	274-0010-1	INSULATOR, HV	2
18	274-0011-1	HV SHIELD	2
19	274-0011-2	HV SHIELD	2
20	274-0017-2	MOUNTING BRACKET	1
21	274-0018-2	EMITTER SUPPORT BRACKET	1
22	274-0019-7	U-BRACKET	1
23	274-0031-1	CATHODE BLOCK, LEFT	1
24	274-0032-1	CATHODE BLOCK, RIGHT	1
25	274-0036-1	EMITTER BUSS BAR, RIGHT	1

UNLESS OTHERWISE SPECIFIED	
GLOBAL TOLERANCES	
	INCHES [mm]
.X	+/- .03 [0.762]
.XX	+/- 0.01 [0.254]
.XXX	+/- 0.005 [0.127]
ANGLES +/- .5°	
SURF FINISH 63 RMS	

DWG BY G. DION	DATE 7-21-2015
CHECK BY	DATE
PROJ ENG	DATE
MFG ENG	DATE
DO NOT SCALE DRAWING	
FILE NUMBER	- 274-0150-3
INITIAL PROJECT	-

MATERIAL:	SEE PARTS LIST
FINISH:	SEE NOTES
THIRD ANGLE PROJECTION	

TELEMARK
Battle Ground, WA

EMITTER ASSEMBLY, UHV

B SCALE 1:1 SHEET 1 of 1 DWG NO. **274-0150-3** REV **C**

CONFIDENTIAL. This document contains proprietary data of TELEMARK and is not to be copied or distributed without the prior written consent of TELEMARK. The receipt or possession of the document does not convey any rights to reproduce it, disclose its contents, or to manufacture, use or sell anything incorporating the concepts and details disclosed by it. Such concepts and details are not to be used other than for the benefit of TELEMARK and are not to be disclosed to others without the prior written consent of an officer of TELEMARK.