

# ***TELEMARK*** 272 Single Pocket E-Beam Source Drawings

The current version of this drawing pdf can be found at

<https://telemark.com/electron-beam-sources/single-pocket-sources/>

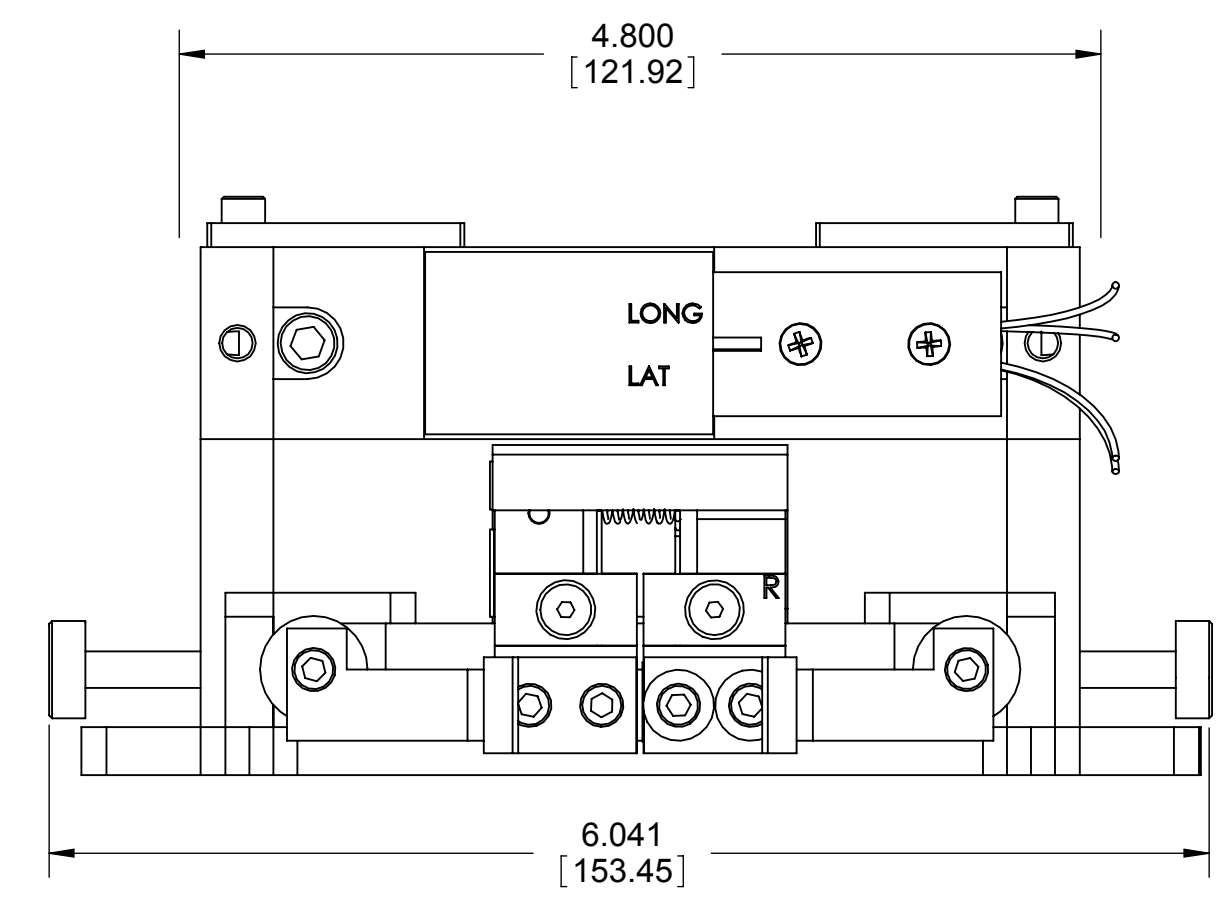
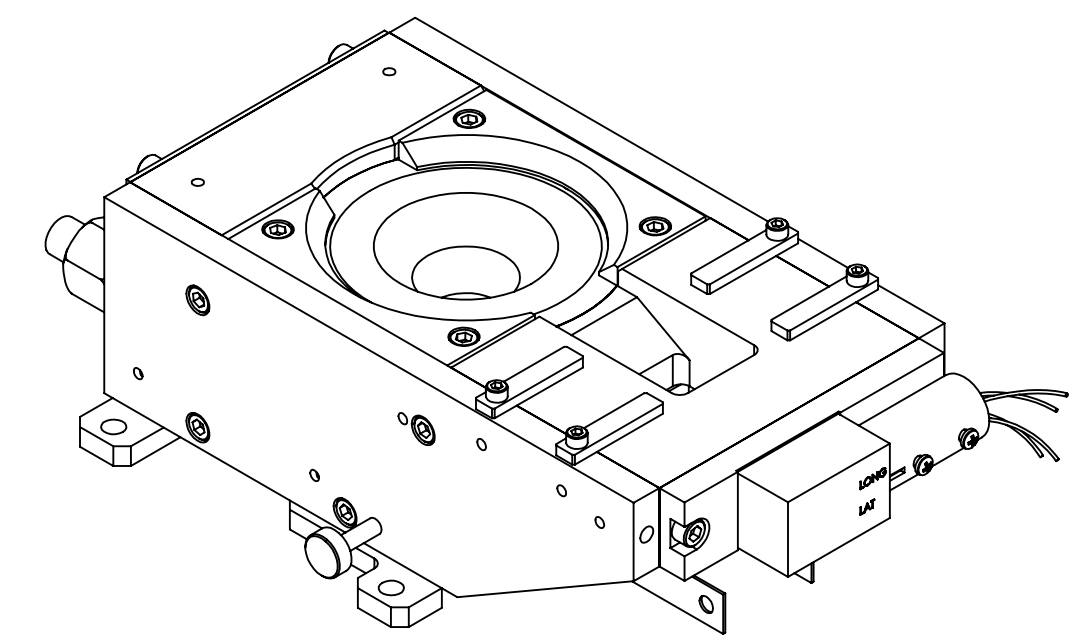
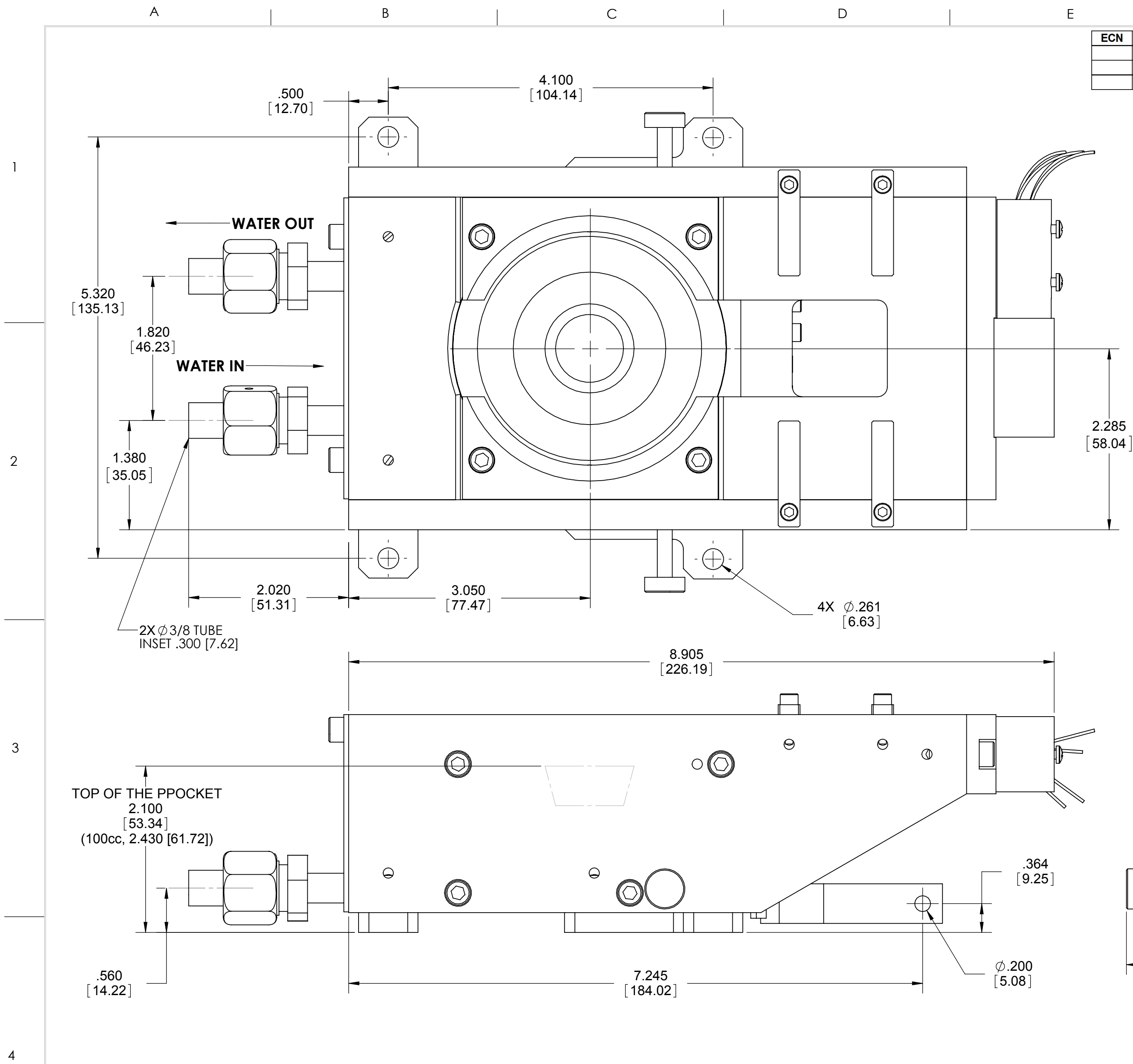
<b>Drawing</b>	<b>Rev.</b>	<b>Description</b>	<b>Page</b>
<b>Reference Dimensions</b>			<b>2</b>
R272-0002	A	Model 272 E-Beam Source Dimensions	3
<b>Model Assemblies</b>			<b>5</b>
251-99xx-2	A	Model 272-01 EB Source, 7cc Model 272-02 EB Source, 15cc Model 272-03 EB Source, 25cc Model 272-30 EB Source, 30cc Model 272-04 EB Source, 40cc Model 272-05 EB Source, 100cc	6
<b>Common Assemblies</b>			<b>7</b>
253-0150-1	B	Emitter Assembly	8

***TELEMARK***

# Reference Dimensions

**E-Beam Source**

ECN	ZONE	REV	DESCRIPTION	BY	DATE
		A	RELEASE	PWF	8/23/2013



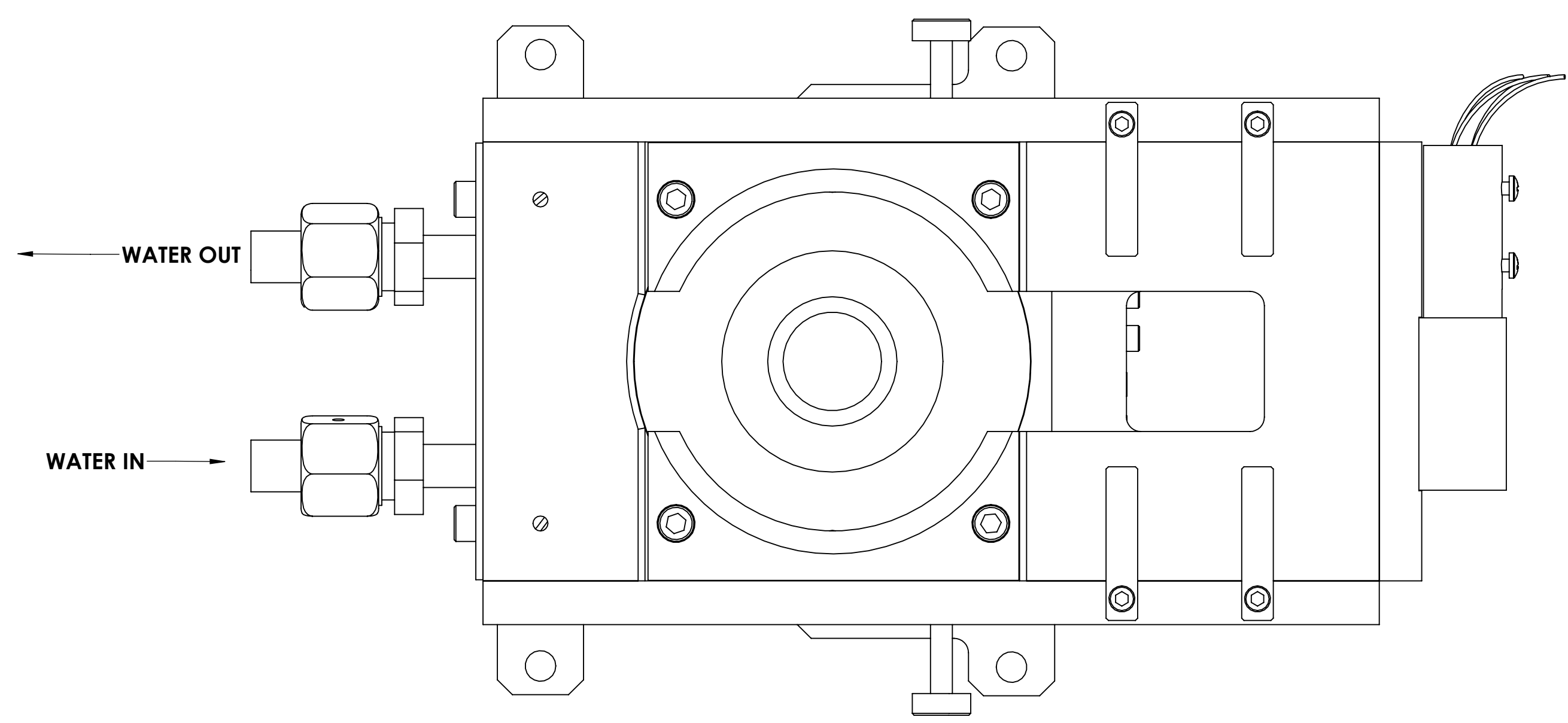
INCH [MM]

UNLESS OTHERWISE SPECIFIED GLOBAL TOLERANCES		DWG BY	DATE	MATERIAL:	B.O.M
.X	+/- .03 [0.762]	CHECK BY	DATE	FINISH:	SEE NOTES
.XX	+/- 0.01 [0.254]	PROJ ENG	DATE	THIRD ANGLE PROJECTION	
.XXX	+/- 0.005 [0.127]	MFG ENG	DATE		
ANGLES +/- .5°		DO NOT SCALE DRAWING		FILE NUMBER - 251-99xx-2	
SURF FINISH - 63 RMS		INITIAL PROJECT -		INITIAL PROJECT -	
CONFIDENTIAL. This document contains proprietary data of TELEMAR and is not to be copied or distributed without the prior written consent of TELEMAR. The receipt or possession of the document does not convey any rights to reproduce it, disclose its contents, or to manufacture, use or sell anything incorporating the concepts and details disclosed by it. Such concepts and details are not to be used other than for the benefit of TELEMAR and are not to be disclosed to others without the prior written consent of an officer of TELEMAR.					
SCALE 1:1		DWG NO. R272-0002		REV A	
SHEET 1 of 2					

A B C D E F G

ECN	ZONE	REV	DESCRIPTION	BY	DATE
		A	RELEASE	PWF	5/6/2011

# MODEL 272 IMPORTANT WATER LINE CONNECTION INFORMATION



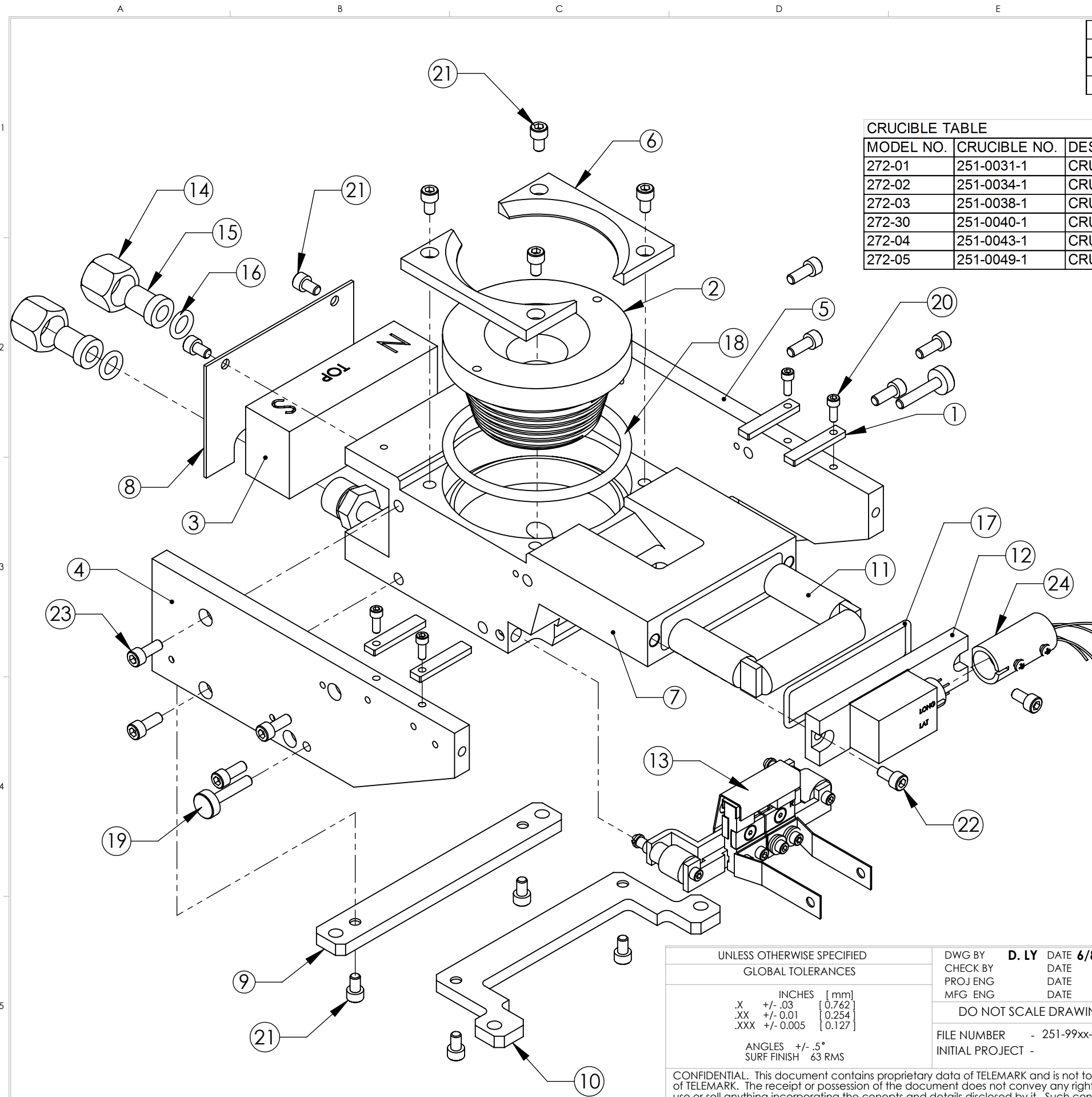
UNLESS OTHERWISE SPECIFIED GLOBAL TOLERANCES		DWG BY	DATE	MATERIAL:	B.O.M	<b>TELEMARK</b> telemark.com
INCHES [mm] .X +/- .03 [0.762] .XX +/- 0.01 [0.254] .XXX +/- 0.005 [0.127]		CHECK BY	DATE	FINISH:	SEE NOTES	
ANGLES +/- .5° SURF FINISH 63 RMS		PROJ ENG	DATE	DO NOT SCALE DRAWING		THIRD ANGLE PROJECTION
		MFG ENG	DATE	FILE NUMBER - 251-99xx-2		INITIAL PROJECT -
CONFIDENTIAL. This document contains proprietary data of TELEMARK and is not to be copied or distributed without the prior written consent of TELEMARK. The receipt or possession of the document does not convey any rights to reproduce it, disclose its contents, or to manufacture, use or sell anything incorporating the concepts and details disclosed by it. Such concepts and details are not to be used other than for the benefit of TELEMARK and are not to be disclosed to others without the prior written consent of an officer of TELEMARK.				SCALE 1:1		DWG NO. 251-99xx-2
				SHEET 2 of 2		REV A

1  
2  
3  
4

***TELEMARK***

# Model Assemblies

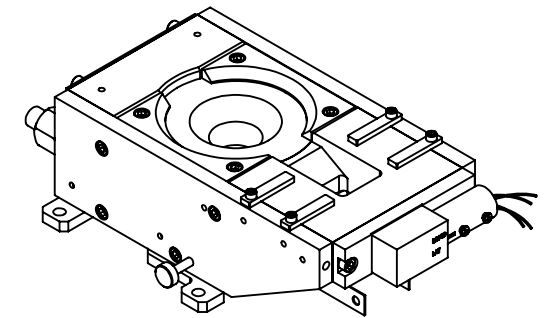
**E-Beam Sources**



ECN	ZONE	REV	DESCRIPTION	BY	DATE
		A	RELEASE	PWF	9/17/2012

**CRUCIBLE TABLE**

MODEL NO.	CRUCIBLE NO.	DESCRIPTION
272-01	251-0031-1	CRUCIBLE, 7CC
272-02	251-0034-1	CRUCIBLE, 15CC
272-03	251-0038-1	CRUCIBLE, 25CC
272-30	251-0040-1	CRUCIBLE, 30CC
272-04	251-0043-1	CRUCIBLE, 40CC
272-05	251-0049-1	CRUCIBLE, 100CC



NO.	QTY.	PART NO.	DESCRIPTION
1	4	241-0053-3	POLE PIECE
2	1	251-00XX-1	CRUCIBLE
3	1	251-0055-1	PERMANENT MAGNET
4	1	251-0058-2	MAGNET ARM, LEFT
5	1	251-0059-2	MAGNET ARM, RIGHT
6	2	251-0077-1	CRUCIBLE CLAMP
7	1	251-0078-1	MAIN BLOCK ASSEMBLY
8	1	251-0084-1	REAR SHIELD
9	1	251-0088-1	MOUNTING STRAP
10	1	251-0088-5	MOUNTING STRAP
11	1	252-0093-1	COIL ASSEMBLY
12	1	252-0100-3	COIL SEAL PLATE ASSEMBLY
13	1	253-0150-1	EMITTER ASSEMBLY
14	2	271-0650-2	WATER FITTING NUT
15	2	271-0651-2	WATER FITTING GLAND
16	2	271-2110-1	O-RING, VITON, ID 3/8", W 3/32"
17	1	271-2140-1	O-RING, VITON, ID 2-1/4", W 3/32"
18	1	271-2235-1	O-RING, VITON, ID 3-1/8", W 1/8"
19	2	251-5008-1	THUMBSCREW, EMITTER
20	4	271-6050-6	VENTED SCREW, #6-32 X 3/8" SST SHCS, SILVER
21	10	271-6140-1	VENTED SCREW, #10-32 X 5/16" SST. SHCS
22	2	271-6145-1	VENTED SCREW, #10-32 X 3/8" SST SHCS
23	8	271-6150-1	VENTED SCREW, #10-32 X 1/2" SST. SHCS
24	1	272-0125-2	COIL CONNECTOR ASSEMBLY

UNLESS OTHERWISE SPECIFIED	
GLOBAL TOLERANCES	
	INCHES [mm]
.X	+/- .03 [0.762]
.XX	+/- 0.01 [0.254]
.XXX	+/- 0.005 [0.127]
ANGLES +/- .5°	
SURF FINISH 63 RMS	

DWG BY **D. LY** DATE **6/8/2010**  
 CHECK BY \_\_\_\_\_ DATE \_\_\_\_\_  
 PROJ ENG \_\_\_\_\_ DATE \_\_\_\_\_  
 MFG ENG \_\_\_\_\_ DATE \_\_\_\_\_

DO NOT SCALE DRAWING

FILE NUMBER - 251-99xx-2  
 INITIAL PROJECT -

MATERIAL: B.O.M  
 FINISH: SEE NOTES  
 THIRD ANGLE PROJECTION

**TELEMARK** telemark.com

**MODEL 272**  
**EB SOURCE**

CONFIDENTIAL. This document contains proprietary data of TELEMARK and is not to be copied or distributed without the prior written consent of TELEMARK. The receipt or possession of the document does not convey any rights to reproduce it, disclose its contents, or to manufacture, use or sell anything incorporating the concepts and details disclosed by it. Such concepts and details are not to be used other than for the benefit of TELEMARK and are not to be disclosed to others without the prior written consent of an officer of TELEMARK.

<b>B</b>	SCALE 1:2	DWG NO.	REV
	SHEET 1 of 1	<b>251-99xx-2</b>	<b>A</b>

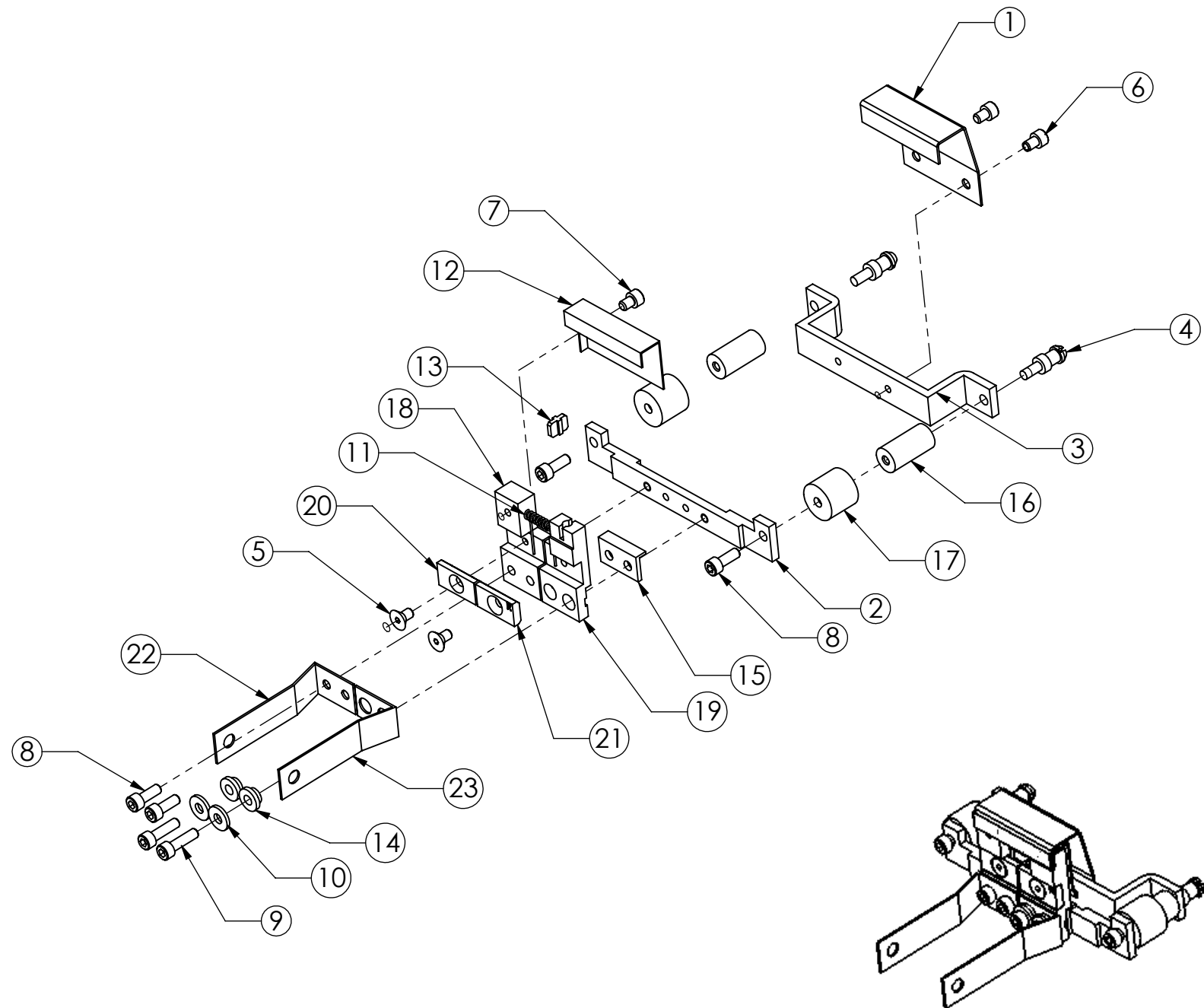
***TELEMARK***

# Common Assemblies

**E-Beam Source**

A B C D E F G H

ECN	ZONE	REV	DESCRIPTION	BY	DATE
		A	RELEASE		12/15/2004
		B	UPDATE DRAWING TO CORRECT PART NUMBER	D. LY	1/11/2011



ISOMETRIC VIEW

ITEM NO.	QTY.	PART NO.	DESCRIPTION
1	1	253-0003-1	ANODE
2	1	253-0017-2	MOUNTING BRACKET, HV CUPS
3	1	253-0018-1	SUPPORT BRACKET
4	2	253-0040-1	MOUNTING SCREW
5	2	271-6010-5	SCREW, #6-32 X 1/4" SLOT FLAT HEAD, TI
6	2	271-6020-1	VENTED SCREW, #6-32 X 3/16" SST SHCS
7	1	271-6020-5	SCREW, #6-32 X 3/16" TI SHCS
8	4	271-6050-1	VENTED SCREW, #6-32 X 3/8" SST. SHCS
9	2	271-6060-1	VENTED SCREW, #6-32 X 1/2" SST SHCS
10	2	271-6242-1	FLAT WASHER, #6 SST.
11	1	273-0001-1	FILAMENT, 7-1/2 TURN
12	1	273-0004-2	BEAM FORMER
13	1	273-0005-1	INSULATOR, CROSS
14	2	273-0006-1	INSULATOR, COLLAR
15	1	273-0008-1	L INSULATOR
16	2	273-0010-1	HV INSULATOR
17	2	273-0011-1	HV SHIELD
18	1	273-0031-1	CATHODE BLOCK, LEFT
19	1	273-0032-1	CATHODE BLOCK, LEFT
20	1	273-0033-3	FILAMENT CLAMP, LEFT
21	1	273-0033-4	FILAMENT CLAMP, RIGHT
22	1	273-0035-1	EMITTER BUS BAR, LEFT
23	1	273-0036-1	FILAMENT BUS BAR, RIGHT

UNLESS OTHERWISE SPECIFIED	
GLOBAL TOLERANCES	
INCHES	[mm]
.X +/- .03	[0.762]
.XX +/- 0.01	[0.254]
.XXX +/- 0.005	[0.127]
ANGLES +/- .5°	
SURF FINISH 63 RMS	

DWG BY	D. LY	DATE	12/15/04
CHECK BY		DATE	
PROJ ENG		DATE	
MFG ENG		DATE	
DO NOT SCALE DRAWING			
FILE NUMBER	- 253-0150-1		
INITIAL PROJECT	-		

MATERIAL:
FINISH:
THIRD ANGLE PROJECTION



**EMITTER ASSEMBLY**

CONFIDENTIAL. This document contains proprietary data of TELEMARK and is not to be copied or distributed without the prior written consent of TELEMARK. The receipt or possession of the document does not convey any rights to reproduce it, disclose its contents, or to manufacture, use or sell anything incorporating the concepts and details disclosed by it. Such concepts and details are not to be used other than for the benefit of TELEMARK and are not to be disclosed to others without the prior written consent of an officer of TELEMARK.

<b>B</b>	SCALE	1:2	DWG NO.	<b>253-0150-1</b>	REV	<b>B</b>
	SHEET	1 of 1				