

TELEMARK 276 Multi Pocket E-Beam Source Drawings

The current version of this drawing pdf can be found at

<https://telemark.com/electron-beam-sources/multi-pocket-sources/>

Drawing	Rev.	Description	Page
Reference Dimensions			2
R276-0001	A1	Model 276 E-Beam Source Dimensions	3
Model Assemblies			5
276-9902-1	A	Model 276-02 EB Source, 4 pkt, 15cc	6
276-9906-1	A	Model 276-06 EB Source, 6 pkt, 7cc	7
276-9908-1	A	Model 276-08 EB Source, 4 pkt, 25cc	8
276-9912-1	A	Model 276-12 EB Source, 6 pkt, 15cc	9
276-9914-1	B	Model 276-14 EB Source, 8 pkt, 7cc	10
276-9918-1	A	Model 276-18 EB Source, 6 pkt, 25cc	11
276-9920-1	A	Model 276-20 EB Source, 4 pkt, 30cc	12
276-9924-1	A	Model 276-24 EB Source, Pan, 290cc	13
276-9928-1	A	Model 276-28 EB Source, 4 pkt, 7cc	14
276-9932-1	A	Model 276-32 EB Source, Trough, 275cc	15
276-9962-1	A	Model 276-62 EB Source, 4 pkt, 40cc	16
Common Assemblies			17
267-0140-1	C	External Assembly	18
267-0140-3	A	External Assembly, 8 pocket	19
267-9025-1	B	Manual Drive Assembly	20
274-0150-1	F	Emitter Assembly	21
276-0135-1	E	EB Source Sub Assembly	22
276-0135-3	A	EB Source Sub Assembly, 8 pocket	23
Option - Arc Suppression			24
276-5175-1	A	276 Arc Supression	25
291-3150-2	A	Arc Supression Emitter	26



Reference Dimensions

E-Beam Source

A

B

C

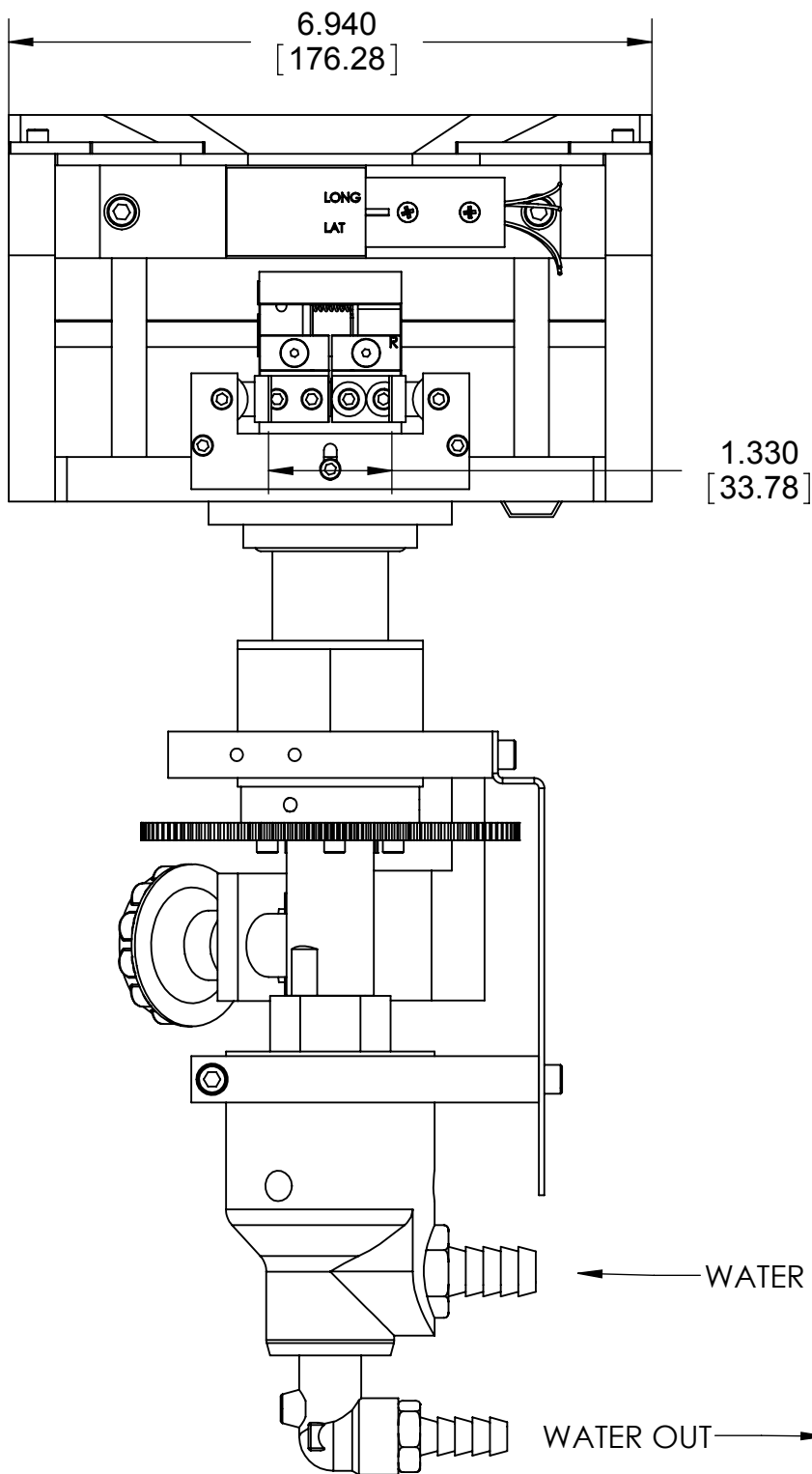
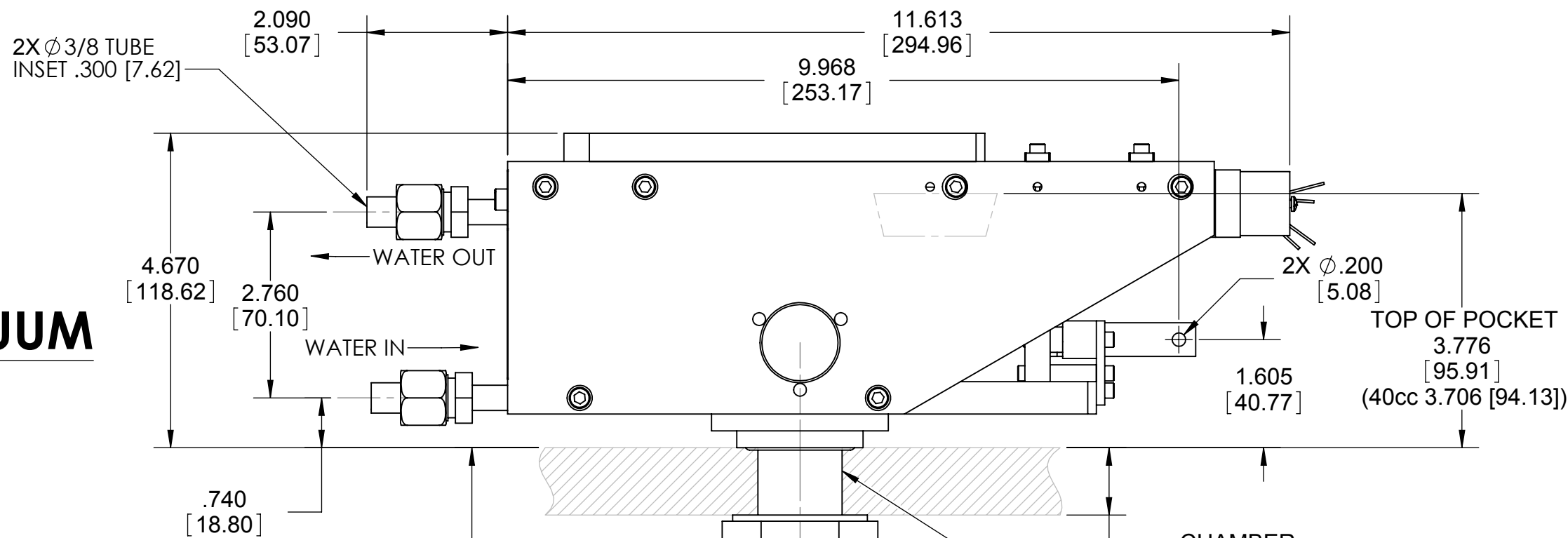
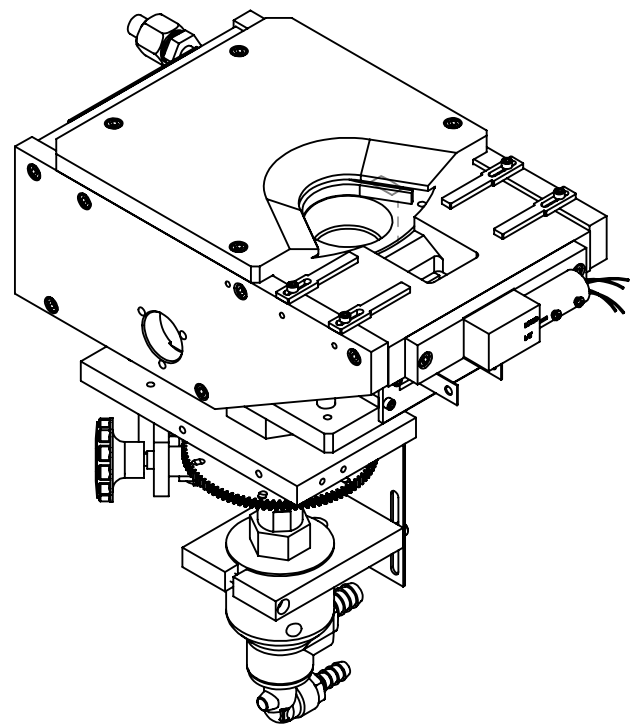
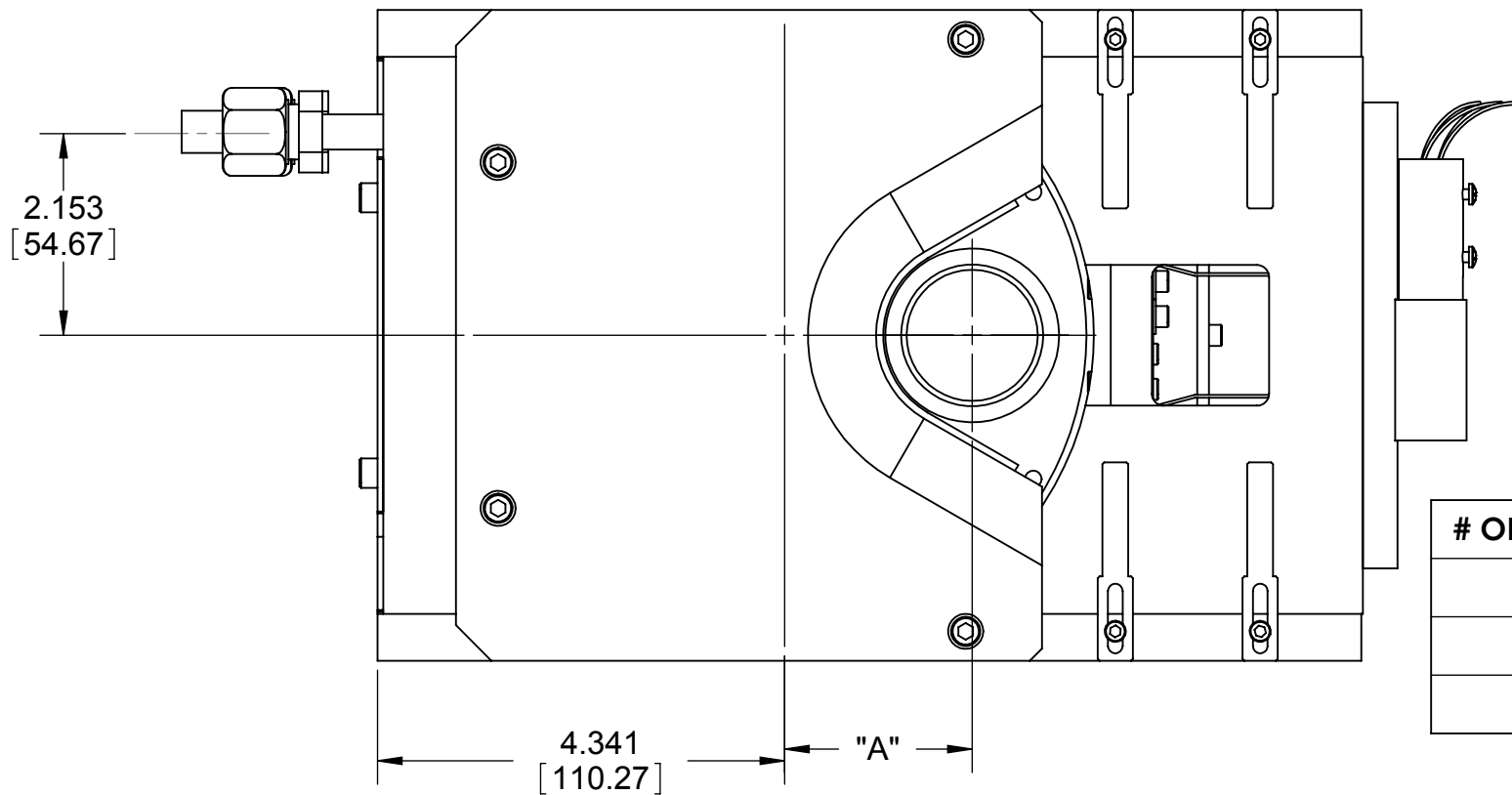
D

E

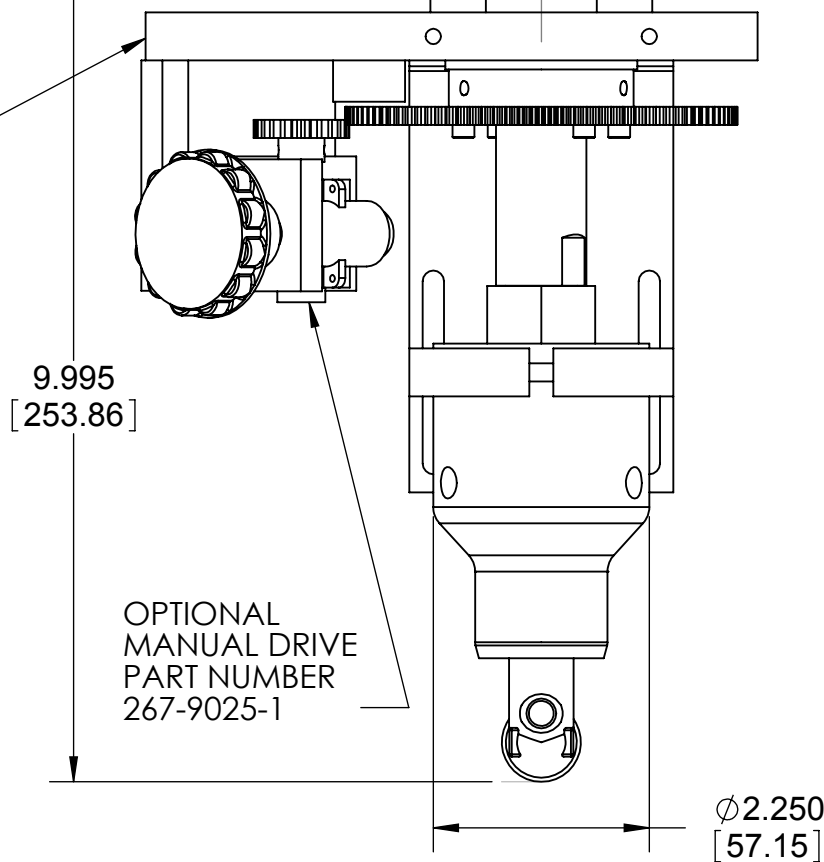
F

G

ECN	ZONE	REV	DESCRIPTION	BY	DATE
		A	RELEASE	PWF	5/11/2010
		A1	UPDATE	PWF	5/3/2011



EXTERNAL ASSEMBLY
POSITION ROTATES
AROUND ROTATION
CENTER



INCH [mm]

UNLESS OTHERWISE SPECIFIED GLOBAL TOLERANCES		DWG BY CHECK BY PROJ ENG MFG ENG	DATE mo/day/yr DATE DATE	MATERIAL:	TELEMARK telemark.com
X +/- .03 [0.762] .XX +/- .01 [0.254] .XXX +/- .005 [0.127]		DO NOT SCALE DRAWING		FINISH:	
ANGLES +/- .5° SURF FINISH 63 RMS		FILE NUMBER - R276-0001 INITIAL PROJECT -		THIRD ANGLE PROJECTION	MODEL 276 EB SOURCE
CONFIDENTIAL. This document contains proprietary data of TELEMARK and is not to be copied or distributed without the prior written consent of TELEMARK. The receipt or possession of the document does not convey any rights to reproduce it, disclose its contents, or to manufacture, use or sell anything incorporating the concepts and details disclosed by it. Such concepts and details are not to be used other than for the benefit of TELEMARK and are not to be disclosed to others without the prior written consent of an officer of TELEMARK.		C		SCALE 1:2 SHEET 1 of 2	DWG NO. R276-0001 REV A1

A

B

C

D

E

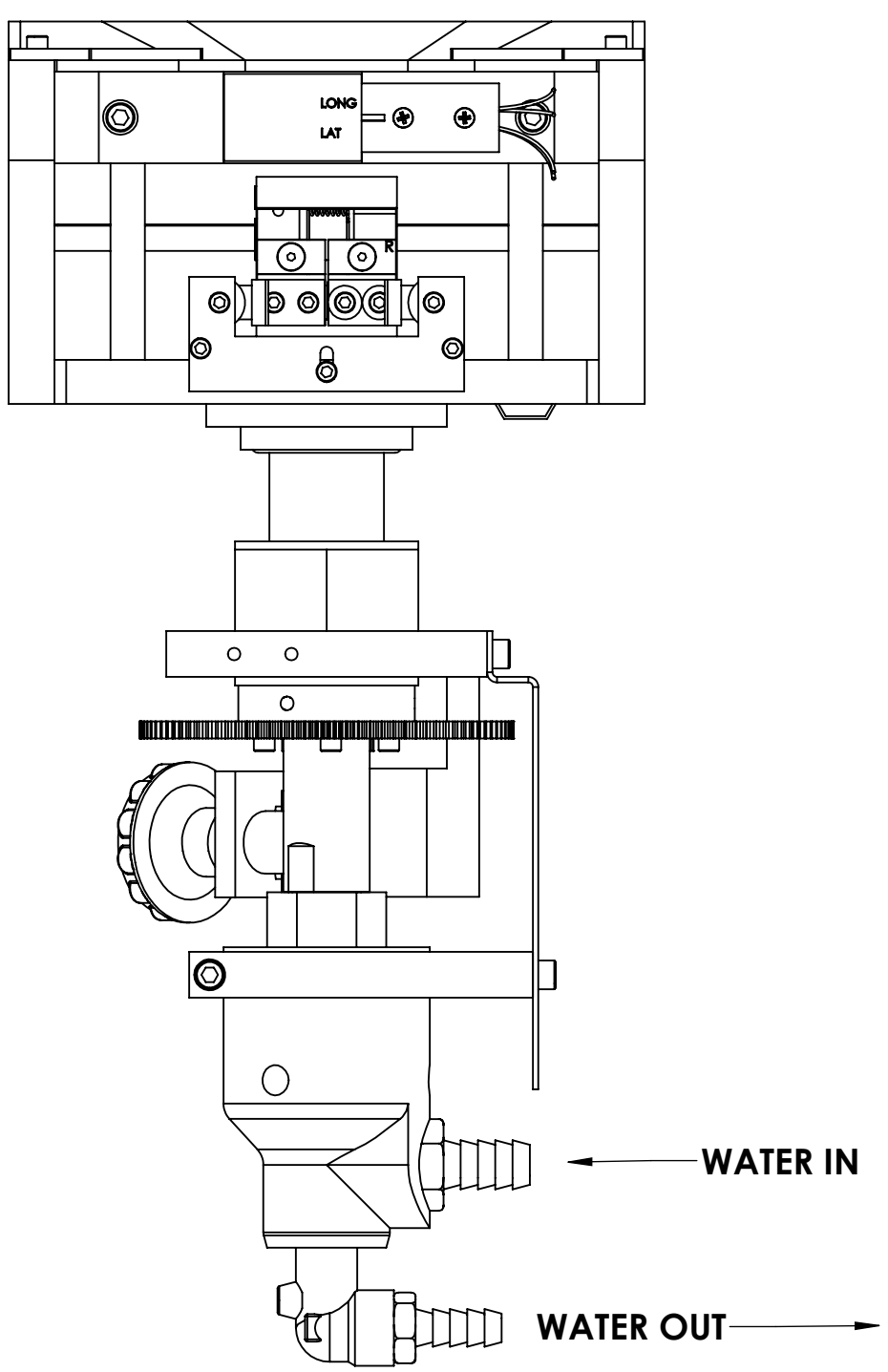
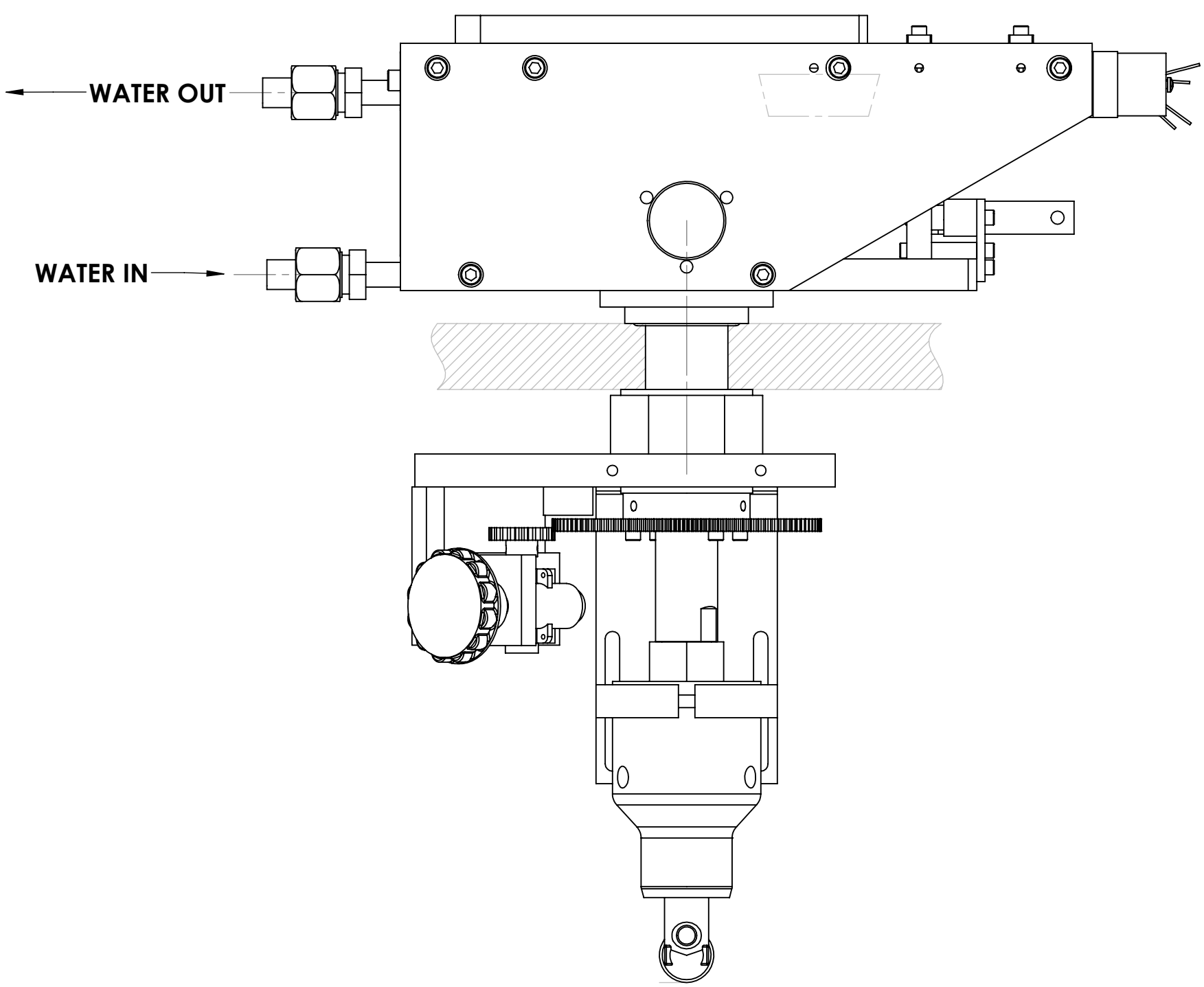
F


G

ECN	ZONE	REV	DESCRIPTION	BY	DATE
		A	RELEASE	PWF	5/11/2010
		A1	UPDATE	PWF	5/3/2011

MODEL 276

IMPORTANT WATER LINE CONNECTION INFORMATION

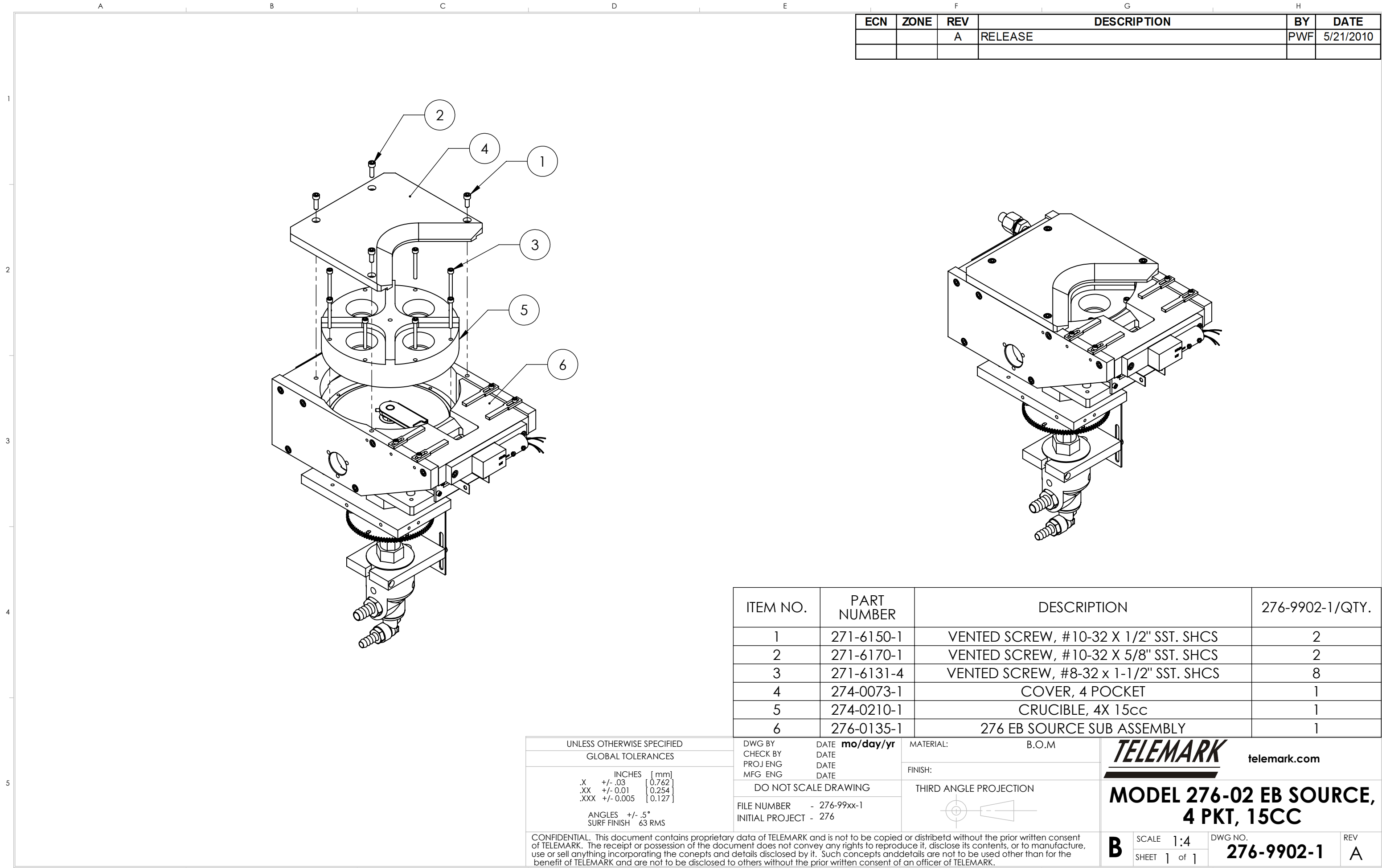


UNLESS OTHERWISE SPECIFIED		DWG BY	DATE	MATERIAL:	<div>TELEMARK</div>	telemark.com
GLOBAL TOLERANCES		CHECK BY	DATE			
		PROJ ENG	DATE			
		MFG ENG	DATE			
INCHES [mm]		DO NOT SCALE DRAWING		THIRD ANGLE PROJECTION		
.X +/- .03 [0.762]		FILE NUMBER - R276-0001				
.XX +/- .01 [0.254]		INITIAL PROJECT -				
.XXX +/- .005 [0.127]						
ANGLES +/- .5°						
SURF FINISH .63 RMS						
<div>CONFIDENTIAL. This document contains proprietary data of TELEMARK and is not to be copied or distributed without the prior written consent of TELEMARK. The receipt or possession of the document does not convey any rights to reproduce it, disclose its contents, or to manufacture, use or sell anything incorporating the concepts and details disclosed by it. Such concepts and details are not to be used other than for the benefit of TELEMARK and are not to be disclosed to others without the prior written consent of an officer of TELEMARK.</div>						
C	SCALE	1:2	DWG NO.		REV	
	SHEET	2 of 2	R276-0001		A1	

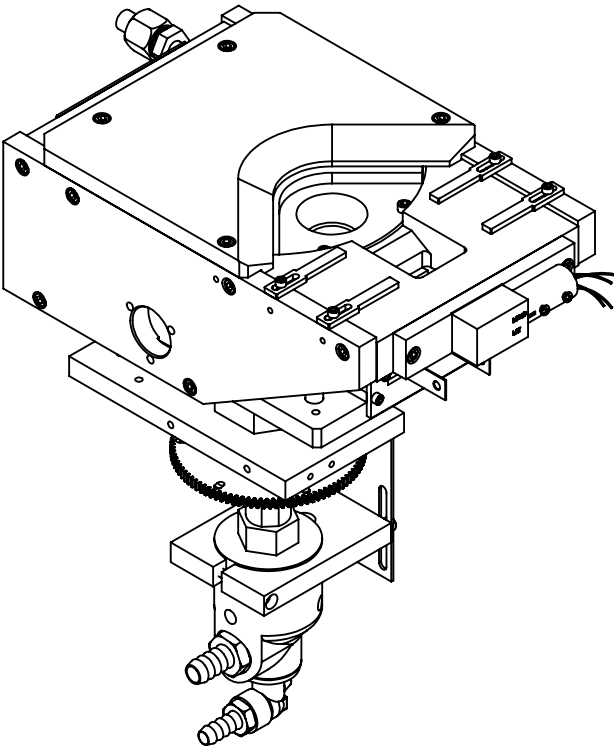


Model Assemblies

E-Beam Sources



ECN	ZONE	REV	DESCRIPTION	BY	DATE
		A	RELEASE	PWF	5/21/2010



ITEM NO.	PART NUMBER	DESCRIPTION	276-9902-1/QTY.
1	271-6150-1	VENTED SCREW, #10-32 X 1/2" SST. SHCS	2
2	271-6170-1	VENTED SCREW, #10-32 X 5/8" SST. SHCS	2
3	271-6131-4	VENTED SCREW, #8-32 x 1-1/2" SST. SHCS	8
4	274-0073-1	COVER, 4 POCKET	1
5	274-0210-1	CRUCIBLE, 4X 15cc	1
6	276-0135-1	276 EB SOURCE SUB ASSEMBLY	1

UNLESS OTHERWISE SPECIFIED		
GLOBAL TOLERANCES		
	INCHES	[mm]
.X	+/- .03	[0.762]
.XX	+/- 0.01	[0.254]
.XXX	+/- 0.005	[0.127]
ANGLES +/- .5°		
SURF FINISH 63 RMS		

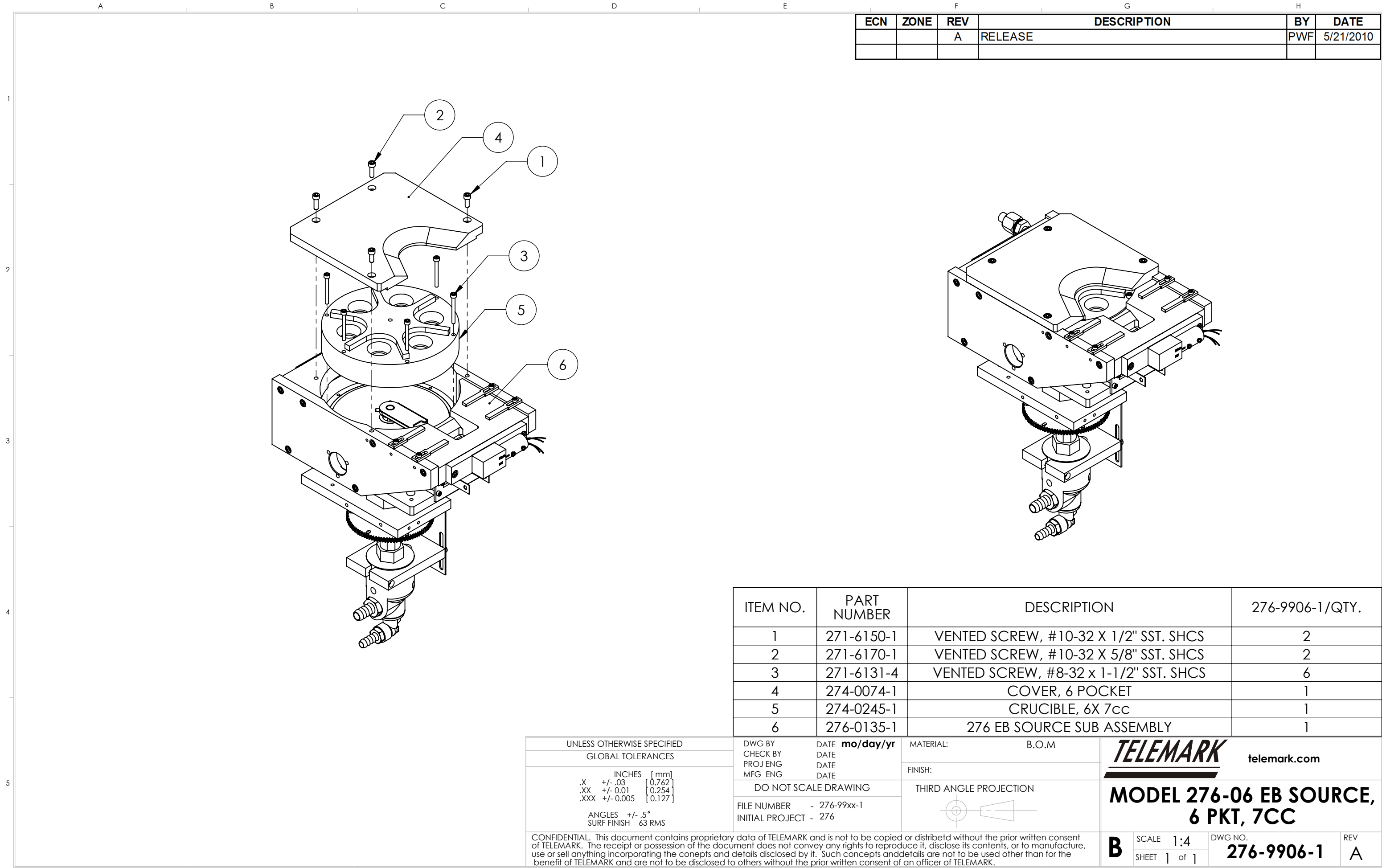
DWG BY	DATE	mo/day/yr
CHECK BY	DATE	
PROJ ENG	DATE	
MFG ENG	DATE	
DO NOT SCALE DRAWING		
FILE NUMBER	- 276-99xx-1	
INITIAL PROJECT	- 276	

MATERIAL:	B.O.M
FINISH:	
THIRD ANGLE PROJECTION	



telemark.com

MODEL 276-02 EB SOURCE,
4 PKT, 15CC



ECN	ZONE	REV	DESCRIPTION	BY	DATE
		A	RELEASE	PWF	5/21/2010

ITEM NO.	PART NUMBER	DESCRIPTION	276-9906-1/QTY.
1	271-6150-1	VENTED SCREW, #10-32 X 1/2" SST. SHCS	2
2	271-6170-1	VENTED SCREW, #10-32 X 5/8" SST. SHCS	2
3	271-6131-4	VENTED SCREW, #8-32 x 1-1/2" SST. SHCS	6
4	274-0074-1	COVER, 6 POCKET	1
5	274-0245-1	CRUCIBLE, 6X 7cc	1
6	276-0135-1	276 EB SOURCE SUB ASSEMBLY	1

UNLESS OTHERWISE SPECIFIED

GLOBAL TOLERANCES

	INCHES	[mm]
.X	+/- .03	[0.762]
.XX	+/- 0.01	[0.254]
.XXX	+/- 0.005	[0.127]

ANGLES +/- .5°

SURF FINISH 63 RMS

DWG BY

CHECK BY

PROJ ENG

MFG ENG

DATE

DATE

DATE

DATE

mo/day/yr

DO NOT SCALE DRAWING

FILE NUMBER - 276-99xx-1

INITIAL PROJECT - 276

MATERIAL: B.O.M

FINISH:

THIRD ANGLE PROJECTION

TELEMARK

telemark.com

MODEL 276-06 EB SOURCE,

6 PKT, 7CC

B

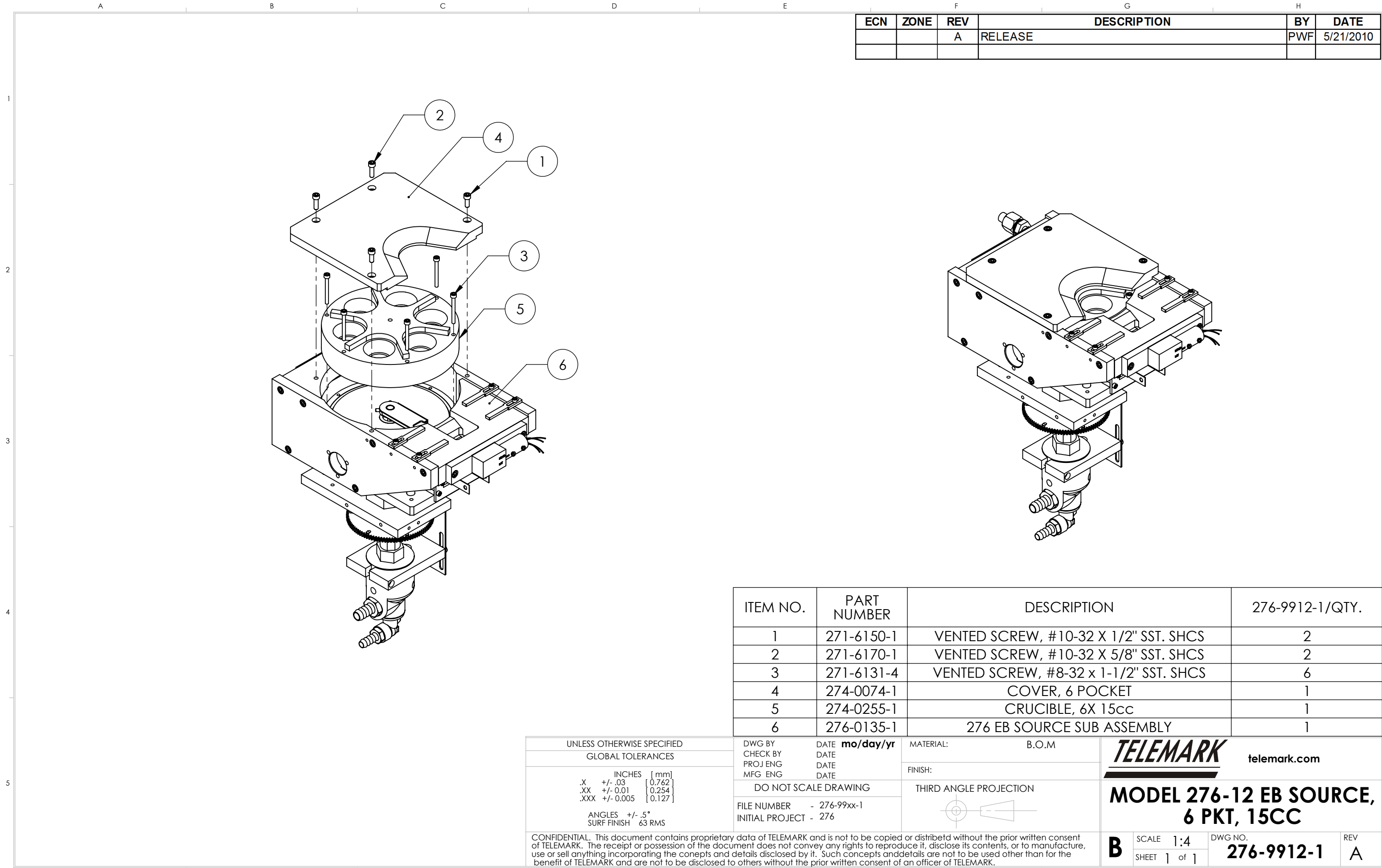
SCALE 1:4

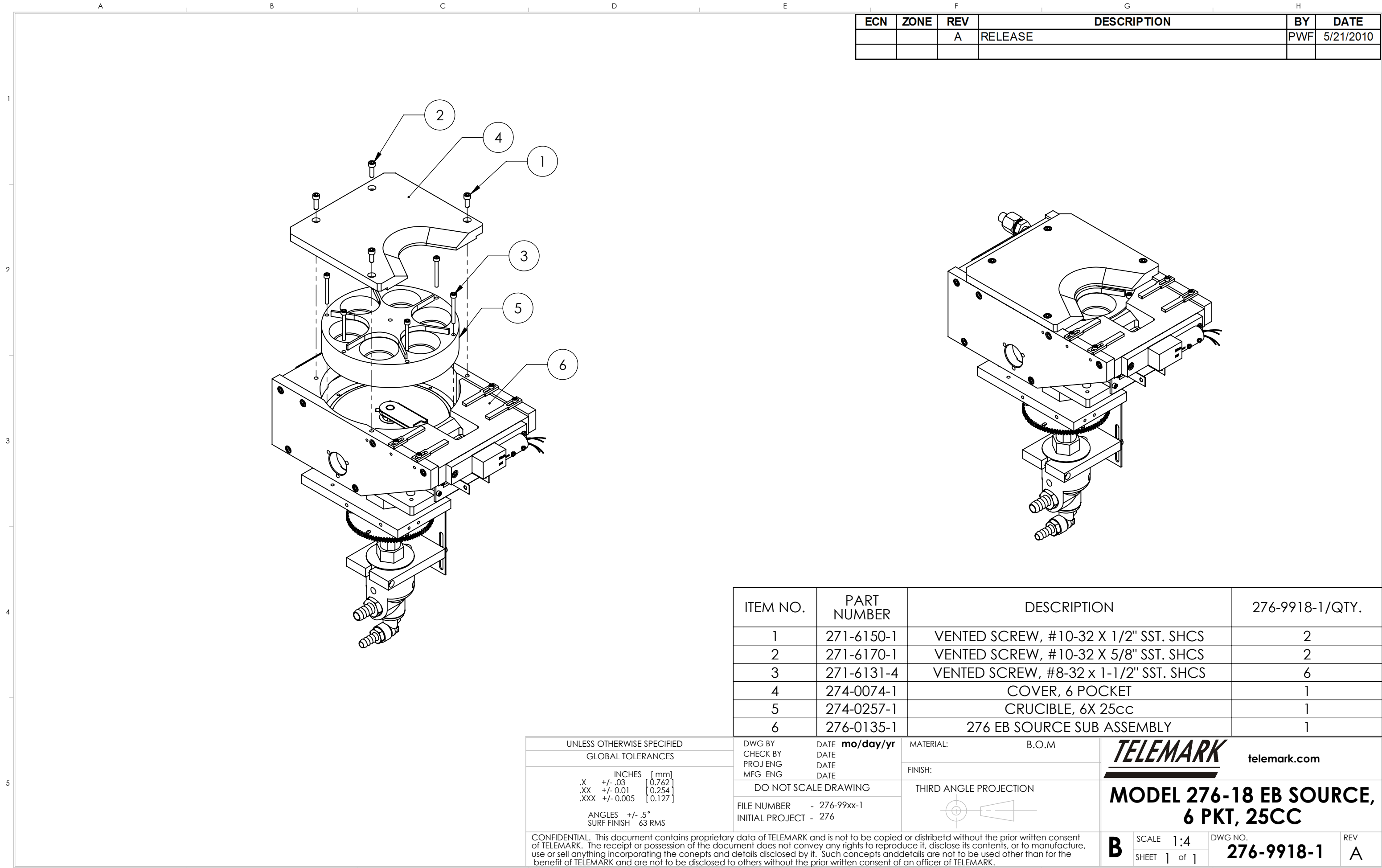
SHEET 1 of 1

DWG NO. 276-9906-1

REV A

CONFIDENTIAL. This document contains proprietary data of TELEMARK and is not to be copied or distribetd without the prior written consent of TELEMARK. The receipt or possession of the document does not convey any rights to reproduce it, disclose its contents, or to manufacture, use or sell anything incorporating the conepts and details disclosed by it. Such concepts andndetails are not to be used other than for the benefit of TELEMARK and are not to be disclosed to others without the prior written consent of an officer of TELEMARK.





1

2

3

4

5

ECN	ZONE	REV	DESCRIPTION	BY	DATE
		A	RELEASE	PWF	5/21/2010

ITEM NO.	PART NUMBER	DESCRIPTION	276-9920-1/QTY.
1	271-6150-1	VENTED SCREW, #10-32 X 1/2" SST. SHCS	2
2	271-6170-1	VENTED SCREW, #10-32 X 5/8" SST. SHCS	2
3	271-6131-4	VENTED SCREW, #8-32 x 1-1/2" SST. SHCS	8
4	274-0073-1	COVER, 4 POCKET	1
5	274-0221-1	CRUCIBLE, 4X 30cc	1
6	276-0135-1	276 EB SOURCE SUB ASSEMBLY	1

UNLESS OTHERWISE SPECIFIED

GLOBAL TOLERANCES

	INCHES	[mm]
.X	+/- .03	[0.762]
.XX	+/- 0.01	[0.254]
.XXX	+/- 0.005	[0.127]

ANGLES

+/- .5°

SURF FINISH

63 RMS

DWG BY

CHECK BY

PROJ ENG

MFG ENG

DATE

DATE

DATE

DATE

mo/day/yr

DO NOT SCALE DRAWING

FILE NUMBER

INITIAL PROJECT

- 276-99xx-1

- 276

MATERIAL:

B.O.M

FINISH:

THIRD ANGLE PROJECTION

TELEMARK

telemark.com

MODEL 276-20 EB SOURCE,

4 PKT, 30CC

B

SCALE

1:4

SHEET

1 of 1

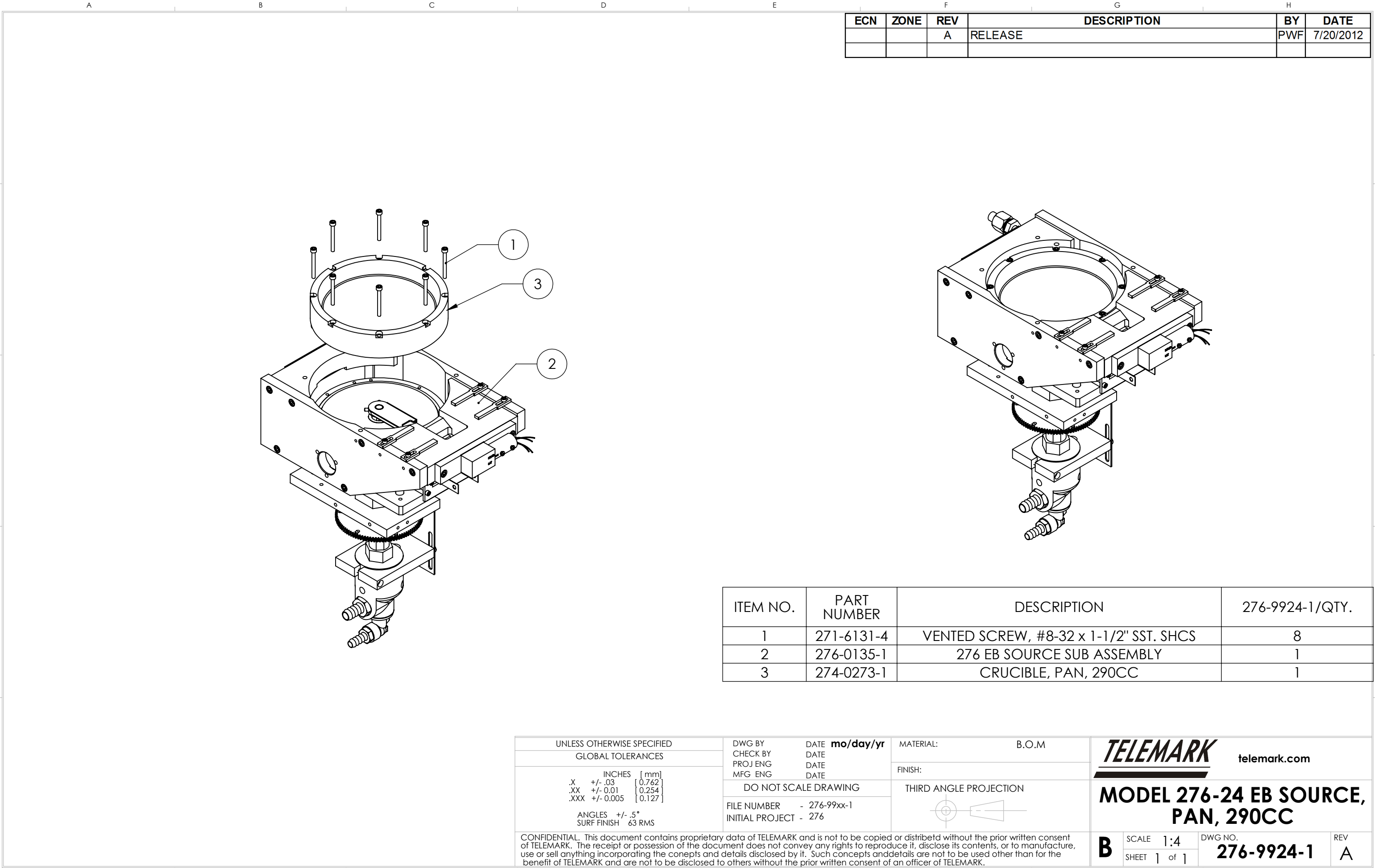
DWG NO.

276-9920-1

REV

A

CONFIDENTIAL. This document contains proprietary data of TELEMARK and is not to be copied or distribetd without the prior written consent of TELEMARK. The receipt or possession of the document does not convey any rights to reproduce it, disclose its contents, or to manufacture, use or sell anything incorporating the conepts and details disclosed by it. Such concepts anddetails are not to be used other than for the benefit of TELEMARK and are not to be disclosed to others without the prior written consent of an officer of TELEMARK.



1

2

3

4

5

ECN	ZONE	REV	DESCRIPTION	BY	DATE
		A	RELEASE	PWF	5/21/2010

ITEM NO.	PART NUMBER	DESCRIPTION	276-9928-1/QTY.
1	271-6150-1	VENTED SCREW, #10-32 X 1/2" SST. SHCS	2
2	271-6170-1	VENTED SCREW, #10-32 X 5/8" SST. SHCS	2
3	271-6131-4	VENTED SCREW, #8-32 x 1-1/2" SST. SHCS	8
4	274-0073-1	COVER, 4 POCKET	1
5	274-0209-1	CRUCIBLE, 4X 7cc	1
6	276-0135-1	276 EB SOURCE SUB ASSEMBLY	1

UNLESS OTHERWISE SPECIFIED

GLOBAL TOLERANCES

	INCHES	[mm]
.X	+/- .03	[0.762]
.XX	+/- 0.01	[0.254]
.XXX	+/- 0.005	[0.127]

ANGLES +/- .5°

SURF FINISH 63 RMS

DWG BY

CHECK BY

PROJ ENG

MFG ENG

DATE

DATE

DATE

DATE

mo/day/yr

DO NOT SCALE DRAWING

FILE NUMBER - 276-99xx-1

INITIAL PROJECT - 276

MATERIAL: B.O.M

FINISH:

THIRD ANGLE PROJECTION

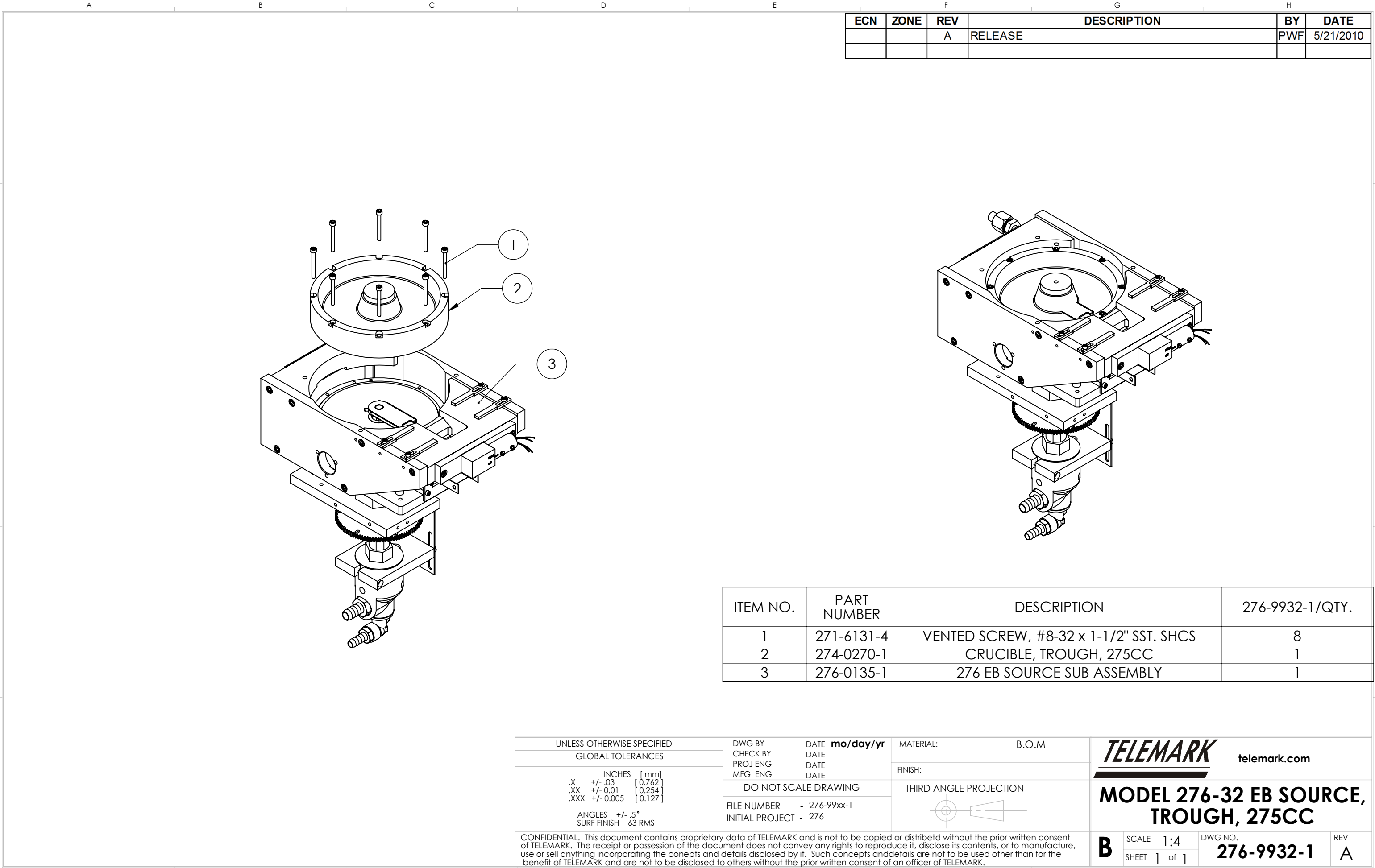
TELEMARK

telemark.com

MODEL 276-28 EB SOURCE,
4 PKT, 7CC

B	SCALE 1:4	DWG NO. 276-9928-1	REV A
	SHEET 1 of 1		

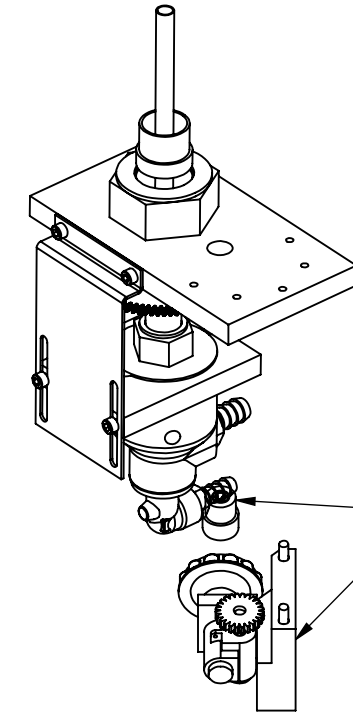
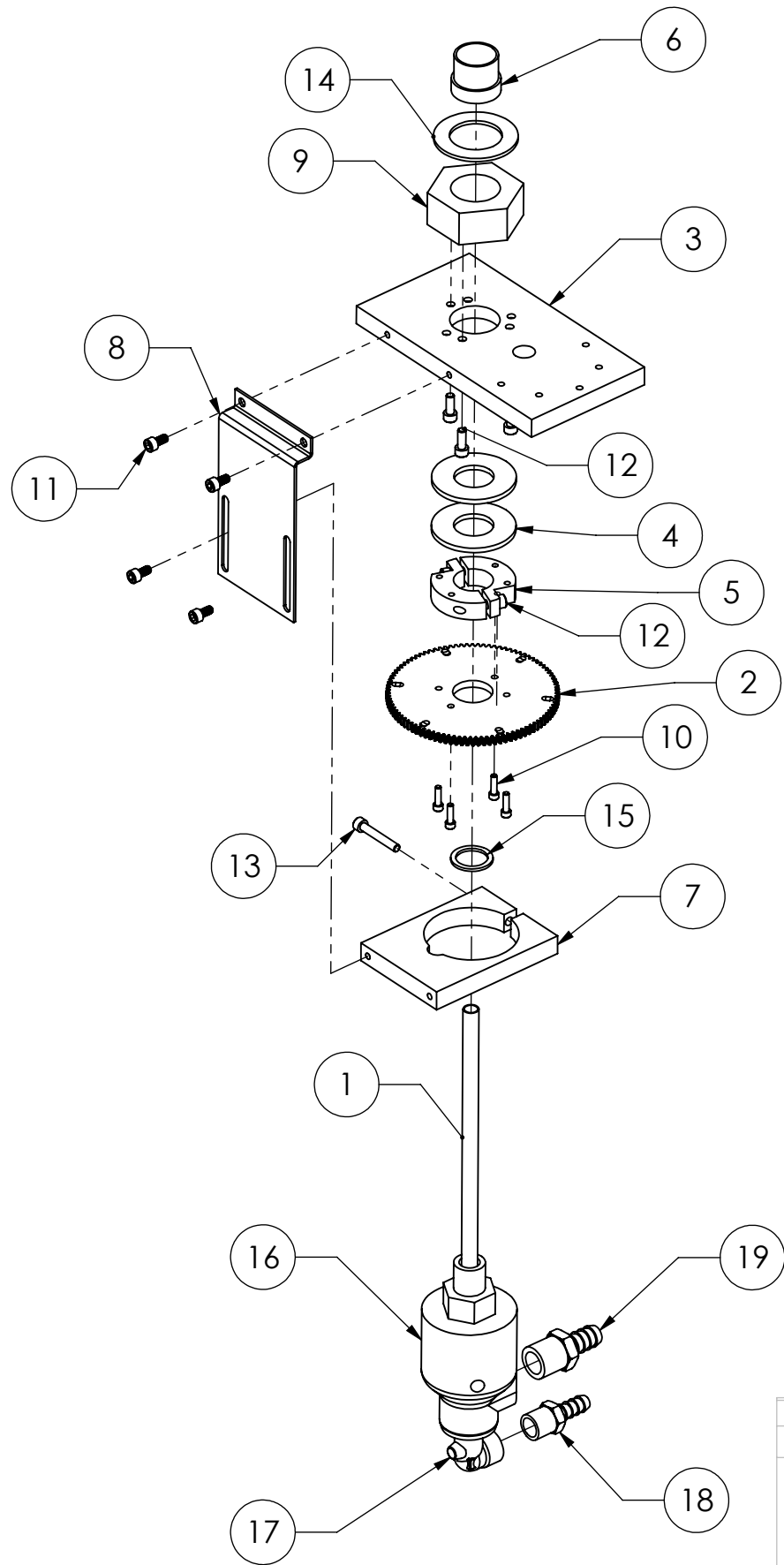
CONFIDENTIAL. This document contains proprietary data of TELEMARK and is not to be copied or distribetd without the prior written consent of TELEMARK. The receipt or possession of the document does not convey any rights to reproduce it, disclose its contents, or to manufacture, use or sell anything incorporating the conepts and details disclosed by it. Such concepts anddetails are not to be used other than for the benefit of TELEMARK and are not to be disclosed to others without the prior written consent of an officer of TELEMARK.





Common Assemblies

E-Beam Source



ISOMETRIC VIEW

OPTIONAL MANUAL DRIVE 267-9025-1

ECN	ZONE	REV	DESCRIPTION	BY	DATE
		B	SEPARATE FROM MANUAL DRIVE	PWF	4/6/2010
		B1	UPDATE CLAMP	PWF	8/2/2010
		C	CHANGE ITEM 15 TO 281-2010-1	PWF	8/19/2013

ITEM NO.	PART NUMBER	DESCRIPTION	Default/ QTY.
1	266-0455-1	WATER INLET TUBE	1
2	267-0149-1	GEAR	1
3	267-0160-1	MOTOR CLAMP	1
4	267-0160-6	MOTOR CLAMP WASHER	2
5	267-0162-1	GEAR CLAMP	2
6	267-0163-1	BUSHING	1
7	267-0170-1	UNION CLAMP	1
8	267-0171-1	UNION STRAP	1
9	267-0472-1	FEEDTHRU NUT	1
10	271-6060-9	SCREW, #6-32 X 1/2" SST SHCS	4
11	271-6145-9	SCREW, #10-32 X 3/8" SST SHCS	4
12	271-6150-9	SCREW, #10-32 X 1/2" SST SHCS.	5
13	271-6175-9	SCREW, #10-32 X 1/2" SST SHCS.	1
14	275-0046-2	WASHER, 1.25"	1
15	281-2010-1	GASKET, WATER UNION	1
16	281-4020-1	WATER UNION	1
17	281-4022-1	WATER FITTING ELBOW, 3/8 NPT-F X 3/8 TB	1
18	281-4023-1	WATER FITTING, 1/2 NPT X 1/2 TB	1
19	281-4024-1	WATER FITTING, 3/8 NPT X 1/2 TB	1

UNLESS OTHERWISE SPECIFIED
GLOBAL TOLERANCES

	INCHES	[mm]
.X	+/- .03	[0.762]
.XX	+/- 0.01	[0.254]
.XXX	+/- 0.005	[0.127]

ANGLES +/- .5°
SURF FINISH 63 RMS

DWG BY
CHECK BY
PROJ ENG
MFG ENG

DATE
DATE
DATE
DATE

mo/day/yr

DO NOT SCALE DRAWING

FILE NUMBER - 267-0140-1
INITIAL PROJECT -

MATERIAL: B.O.M.

FINISH: SEE NOTES

THIRD ANGLE PROJECTION

TELEMARK
telemark.com

EXTERNAL ASSEMBLY

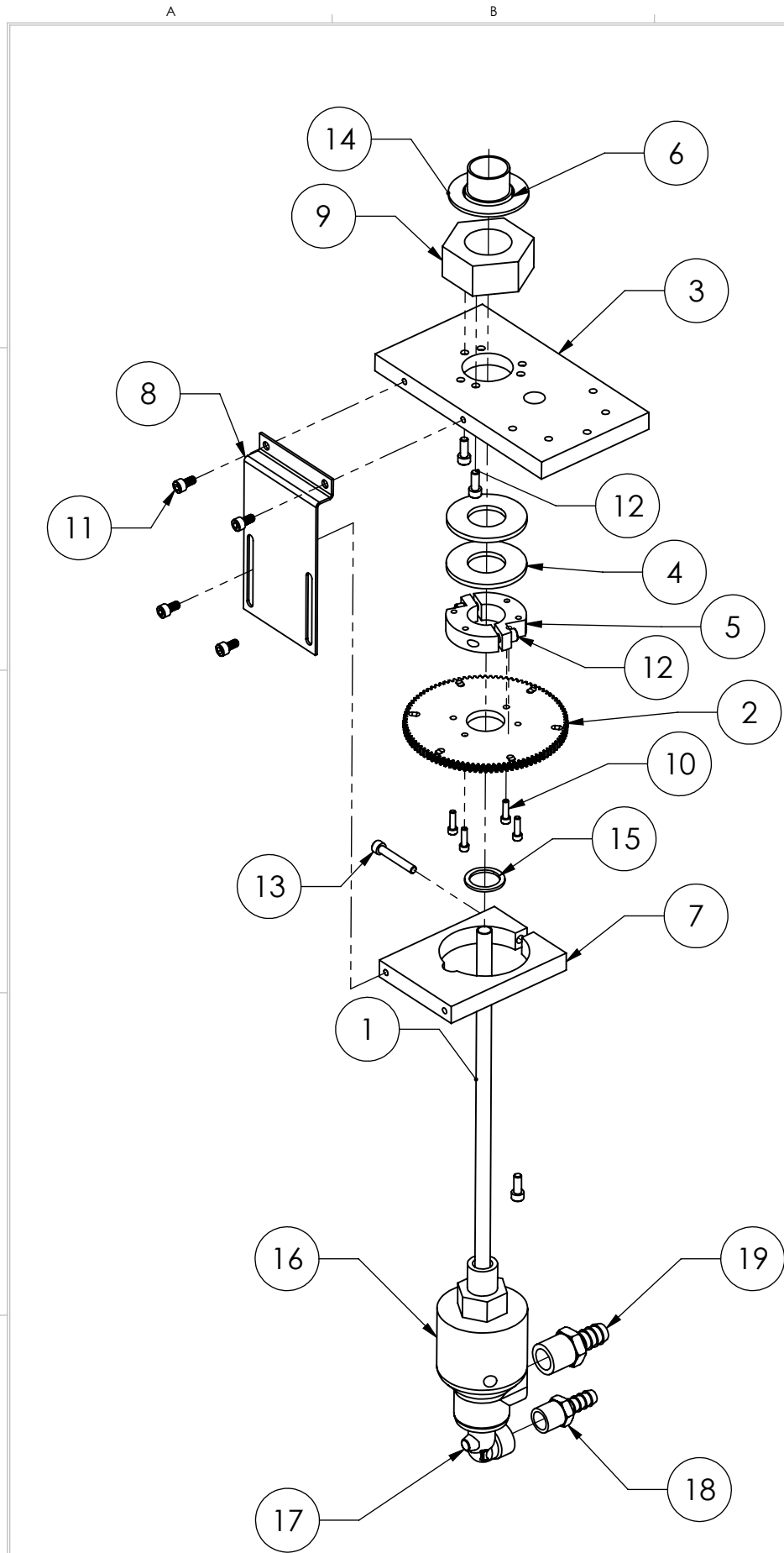
B

SCALE 1:4
SHEET 1 of 1

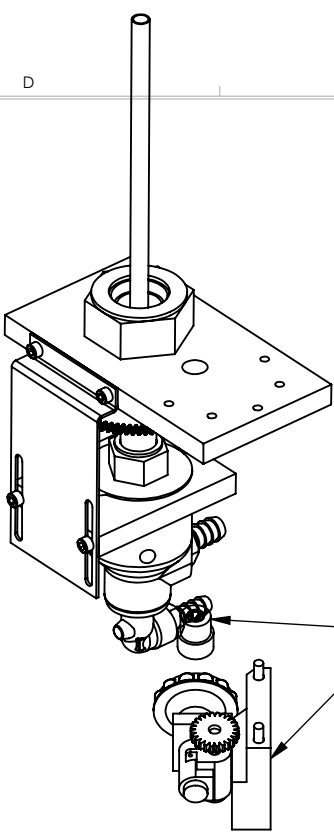
DWG NO. 267-0140-1

REV C

CONFIDENTIAL. This document contains proprietary data of TELEMARK and is not to be copied or distributed without the prior written consent of TELEMARK. The receipt or possession of the document does not convey any rights to reproduce it, disclose its contents, or to manufacture, use or sell anything incorporating the concepts and details disclosed by it. Such concepts and details are not to be used other than for the benefit of TELEMARK and are not to be disclosed to others without the prior written consent of an officer of TELEMARK.



ISOMETRIC VIEW



OPTIONAL MANUAL DRIVE 267-9025-1

ECN	ZONE	REV	DESCRIPTION	BY	DATE
		A	RELEASE	GPD	6/28/2022

ITEM NO.	PART NUMBER	DESCRIPTION	Default/ QTY.
1	266-0455-3	WATER INLET TUBE	1
2	267-0149-2	GEAR	1
3	267-0160-1	MOTOR CLAMP	1
4	267-0160-6	MOTOR CLAMP WASHER	2
5	267-0162-1	GEAR CLAMP	2
6	267-0163-1	BUSHING	1
7	267-0170-1	UNION CLAMP	1
8	267-0171-1	UNION STRAP	1
9	267-0472-1	FEEDTHRU NUT	1
10	271-6060-9	SCREW, #6-32 X 1/2" SST SHCS	4
11	271-6145-1	VENTED SCREW, #10-32 UNF X 3/8" SST, SHCS	4
12	271-6150-9	SCREW, #10-32 X 1/2" SST SHCS.	5
13	271-6175-9	SCREW, #10-32 X 1-1/4" SST SHCS.	1
14	275-0046-2	WASHER, 1.25"	1
15	281-2010-1	GASKET, WATER UNION	1
16	281-4020-1	WATER UNION	1
17	281-4022-1	WATER FITTING ELBOW, 3/8 NPT-F X 3/8 TB	1
18	281-4023-1	WATER FITTING, 1/2 NPT X 1/2 TB	1
19	281-4024-1	WATER FITTING, 3/8 NPT X 1/2 TB	1

UNLESS OTHERWISE SPECIFIED
GLOBAL TOLERANCES

	INCHES	[mm]
.X	+/- .03	[0.762]
.XX	+/- 0.01	[0.254]
.XXX	+/- 0.005	[0.127]

ANGLES +/- .5°
SURF FINISH 63 RMS

DWG BY **G. DION** DATE **6-28-2022**
CHECK BY DATE
PROJ ENG DATE
MFG ENG DATE

DO NOT SCALE DRAWING

FILE NUMBER - 267-0140-3
INITIAL PROJECT -

MATERIAL: SEE PARTS LIST

FINISH: SEE NOTES

THIRD ANGLE PROJECTION

TELEMARK
telemark.com

EXTERNAL ASSEMBLY

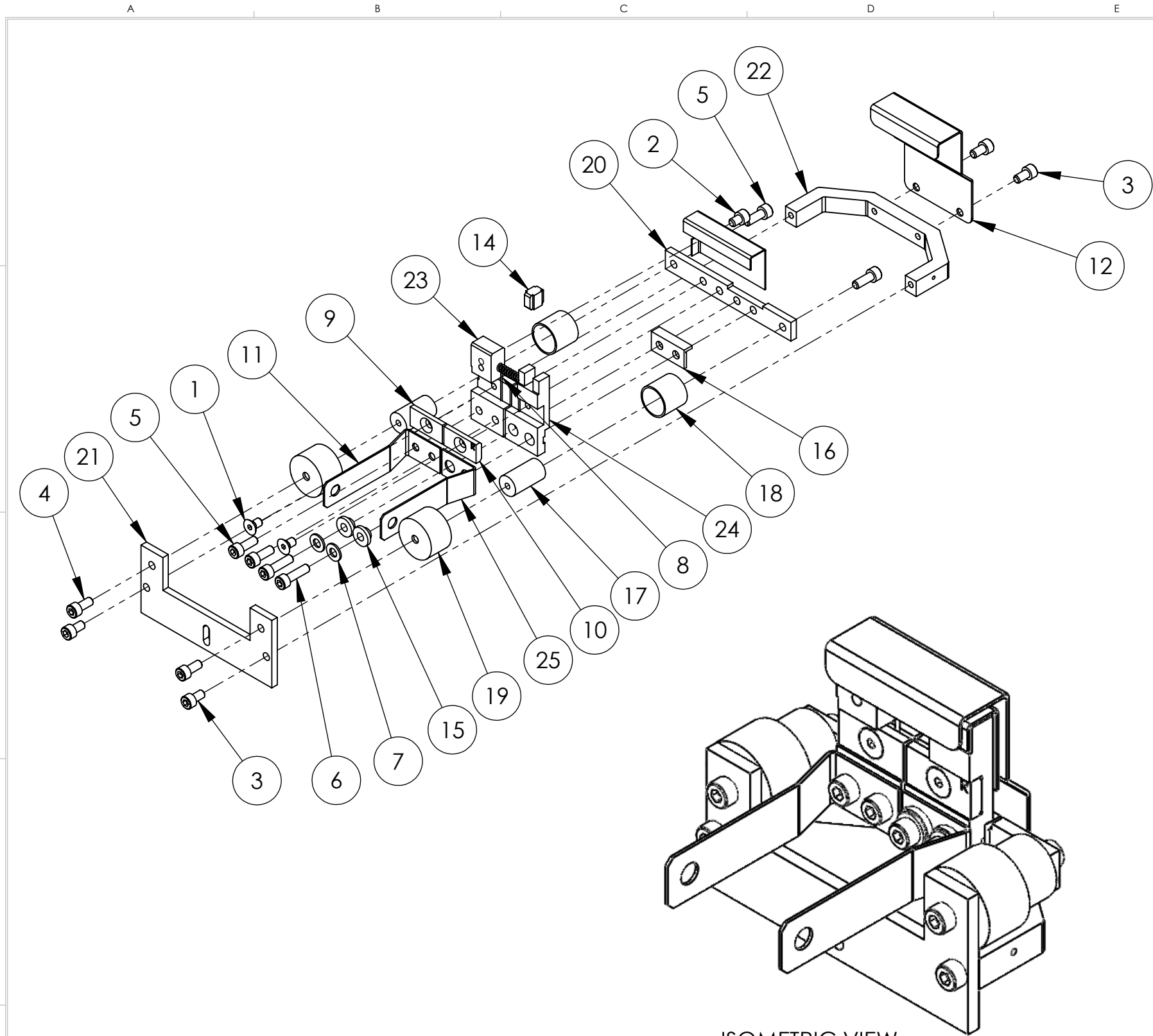
B

SCALE 1:4
SHEET 1 of 1

DWG NO.
267-0140-3

REV
A

CONFIDENTIAL. This document contains proprietary data of TELEMARK and is not to be copied or distributed without the prior written consent of TELEMARK. The receipt or possession of the document does not convey any rights to reproduce it, disclose its contents, or to manufacture, use or sell anything incorporating the concepts and details disclosed by it. Such concepts and details are not to be used other than for the benefit of TELEMARK and are not to be disclosed to others without the prior written consent of an officer of TELEMARK.



ISOMETRIC VIEW

UNLESS OTHERWISE SPECIFIED		
GLOBAL TOLERANCES		
	INCHES	[mm]
.X	+/- .03	[0.762]
.XX	+/- 0.01	[0.254]
.XXX	+/- 0.005	[0.127]
ANGLES +/- .5°		
SURF FINISH 63 RMS		

CONFIDENTIAL. This document contains proprietary data of TELEMAR and is not to be copied or distributed without the prior written consent of TELEMAR. The receipt or possession of the document does not convey any rights to reproduce it, disclose its contents, or to manufacture, use or sell anything incorporating the concepts and details disclosed by it. Such concepts and details are not to be used other than for the benefit of TELEMAR and are not to be disclosed to others without the prior written consent of an officer of TELEMAR.

DWG BY **G. DION** DATE **7-21-2015**
CHECK BY _____ DATE _____
PROJ ENG _____ DATE _____
MFG ENG _____ DATE _____

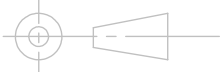
DO NOT SCALE DRAWING

FILE NUMBER - 274-0150-1
INITIAL PROJECT -

MATERIAL: SEE PARTS LIST

FINISH: SEE NOTES

THIRD ANGLE PROJECTION



ECN	ZONE	REV	DESCRIPTION	BY	DATE
		A	RELEASE	GPD	7/21/2015
		B	ADDING LARGER INSULATOR SHIELD	GPD	7/21/2016
		C	ITEM 17 FROM 273-0018-7 TO 273-0018-8	GPD	8/2/2016
		D	P/N FROM 273-0017-1 TO 273-0017-2 & 273-0018-8 TO 273-0018-2	GPD	2/21/2017
		E	REVISED PARTS	GPD	10/2/2017
990811		F	P/N FROM 271-6050-1 TO 271-6040-1, 2 PLACES	GPD	2/1/2018

ITEM NO.	PART NUMBER	DESCRIPTION	QTY.
1	271-6010-5	SCREW, #6-32 X 1/4" SLOT FLAT HEAD, Ti	2
2	271-6020-5	SCREW, #6-32 X 3/16" TI SHCS	1
3	271-6030-1	VENTED SCREW, #6-32 UNC X 1/4" SST SHCS	4
4	271-6040-1	VENTED SCREW, #6-32 X 5/16 SST SHCS	2
5	271-6050-1	VENTED SCREW, #6-32 UNC X 3/8" SHCS	4
6	271-6060-1	VENTED SCREW, #6-32 X 1/2" SST SHCS	2
7	271-6242-1	FLAT WASHER, #6 SST	2
8	273-0001-1	FILAMENT, 7-1/2 TURN	1
9	273-0033-3	FILAMENT CLAMP, LEFT	1
10	273-0033-4	FILAMENT CLAMP, RIGHT	1
11	273-0035-1	EMITTER BUS BAR, LEFT	1
12	274-0003-7	ANODE	1
13	274-0004-7	BEAM FORMER	1
14	274-0005-1	INSULATOR, CROSS	1
15	274-0006-1	INSULATOR, COLLAR	2
16	274-0008-1	INSULATOR, L	1
17	274-0010-1	INSULATOR, HV	2
18	274-0011-1	HV SHIELD	2
19	274-0011-2	HV SHIELD	2
20	274-0017-2	MOUNTING BRACKET	1
21	274-0018-2	EMITTER SUPPORT BRACKET	1
22	274-0019-7	U-BRACKET	1
23	274-0031-1	CATHODE BLOCK, LEFT	1
24	274-0032-1	CATHODE BLOCK, RIGHT	1
25	274-0036-1	EMITTER BUSS BAR, RIGHT	1

TELEMAR

Battle Ground, WA

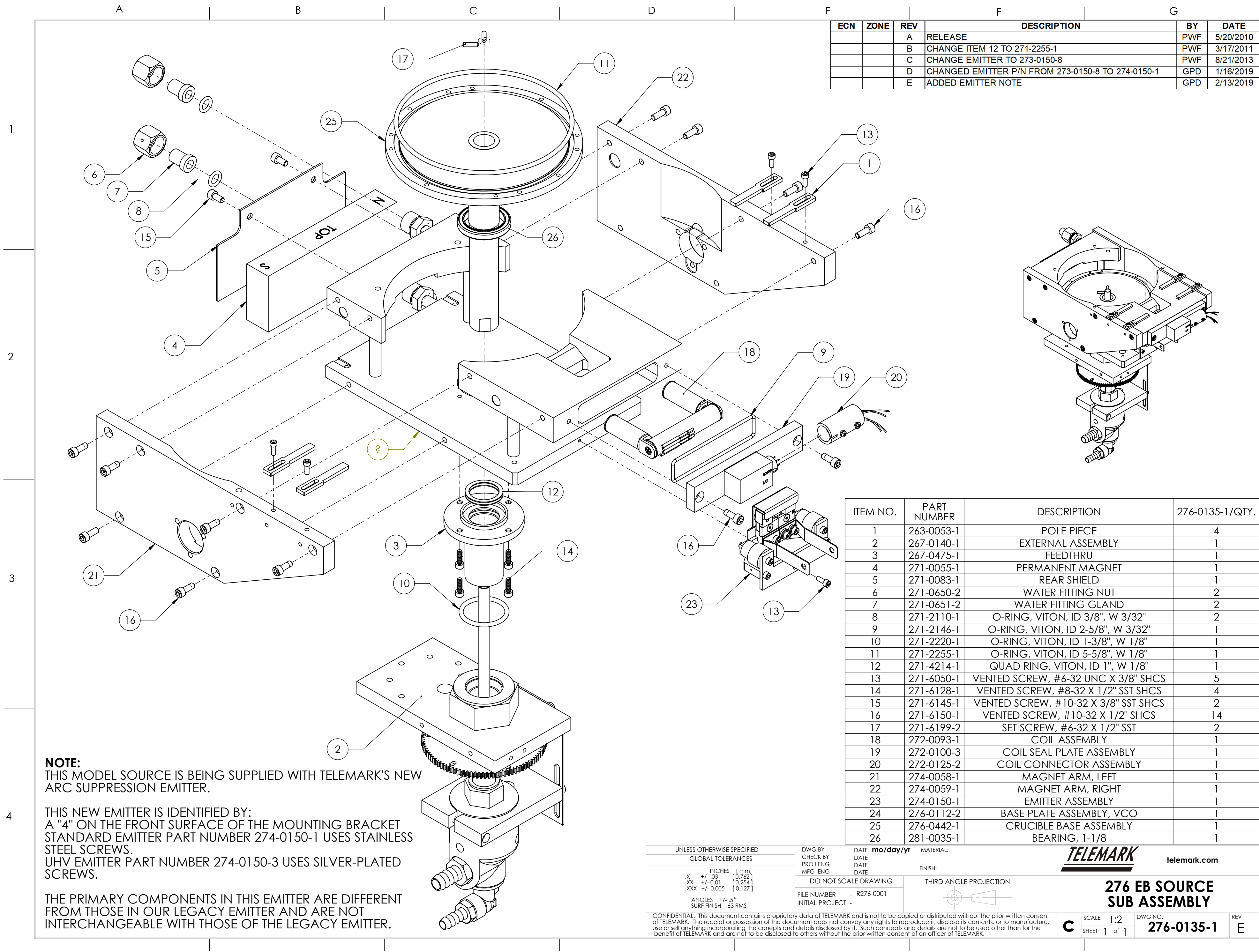
EMITTER ASSEMBLY

B

SCALE 1:1
SHEET 1 of 1

DWG NO. **274-0150-1**

REV **F**



ECN	ZONE	REV	DESCRIPTION	BY	DATE
		A	RELEASE	PWF	5/20/2010
		B	CHANGE ITEM 12 TO 271-2255-1	PWF	3/17/2011
		C	CHANGE EMITTER TO 273-0150-8	PWF	8/21/2013
		D	CHANGED EMITTER P/N FROM 273-0150-8 TO 274-0150-1	GPD	1/16/2019
		E	ADDED EMITTER NOTE	GPD	2/13/2019

ITEM NO.	PART NUMBER	DESCRIPTION	276-0135-1/QTY.
1	263-0053-1	POLE PIECE	4
2	267-0140-1	EXTERNAL ASSEMBLY	1
3	267-0475-1	FEEDTHRU	1
4	271-0055-1	PERMANENT MAGNET	1
5	271-0083-1	REAR SHIELD	1
6	271-0650-2	WATER FITTING NUT	2
7	271-0651-2	WATER FITTING GLAND	2
8	271-2110-1	O-RING, VITON, ID 3/8", W 3/32"	2
9	271-2146-1	O-RING, VITON, ID 2-5/8", W 3/32"	1
10	271-2220-1	O-RING, VITON, ID 1-3/8", W 1/8"	1
11	271-2255-1	O-RING, VITON, ID 5-5/8", W 1/8"	1
12	271-4214-1	QUAD RING, VITON, ID 1", W 1/8"	1
13	271-6050-1	VENTED SCREW, #6-32 UNC X 3/8" SHCS	5
14	271-6128-1	VENTED SCREW, #8-32 X 1/2" SST SHCS	4
15	271-6145-1	VENTED SCREW, #10-32 X 3/8" SST SHCS	2
16	271-6150-1	VENTED SCREW, #10-32 X 1/2" SHCS	14
17	271-6199-2	SET SCREW, #6-32 X 1/2" SST	2
18	272-0093-1	COIL ASSEMBLY	1
19	272-0100-3	COIL SEAL PLATE ASSEMBLY	1
20	272-0125-2	COIL CONNECTOR ASSEMBLY	1
21	274-0058-1	MAGNET ARM, LEFT	1
22	274-0059-1	MAGNET ARM, RIGHT	1
23	274-0150-1	EMITTER ASSEMBLY	1
24	276-0112-2	BASE PLATE ASSEMBLY, VCO	1
25	276-0442-1	CRUCIBLE BASE ASSEMBLY	1
26	281-0035-1	BEARING, 1-1/8	1

NOTE:
THIS MODEL SOURCE IS BEING SUPPLIED WITH TELEMAR'S NEW ARC SUPPRESSION EMITTER.

THIS NEW EMITTER IS IDENTIFIED BY:
A "4" ON THE FRONT SURFACE OF THE MOUNTING BRACKET
STANDARD EMITTER PART NUMBER 274-0150-1 USES STAINLESS
STEEL SCREWS.
UHV EMITTER PART NUMBER 274-0150-3 USES SILVER-PLATED
SCREWS.

THE PRIMARY COMPONENTS IN THIS EMITTER ARE DIFFERENT
FROM THOSE IN OUR LEGACY EMITTER AND ARE NOT
INTERCHANGEABLE WITH THOSE OF THE LEGACY EMITTER.

UNLESS OTHERWISE SPECIFIED
GLOBAL TOLERANCES

	INCHES	[mm]
X	+/- .03	[0.762]
.XX	+/- 0.01	[0.254]
.XXX	+/- 0.005	[0.127]
ANGLES +/- .5°		
SURF FINISH 63 RMS		

DWG BY
CHECK BY
PROJ ENG
MFG ENG

DATE
DATE
DATE

DO NOT SCALE DRAWING

FILE NUMBER - R276-0001
INITIAL PROJECT -

MATERIAL:
FINISH:

THIRD ANGLE PROJECTION

TELEMAR
telemark.com

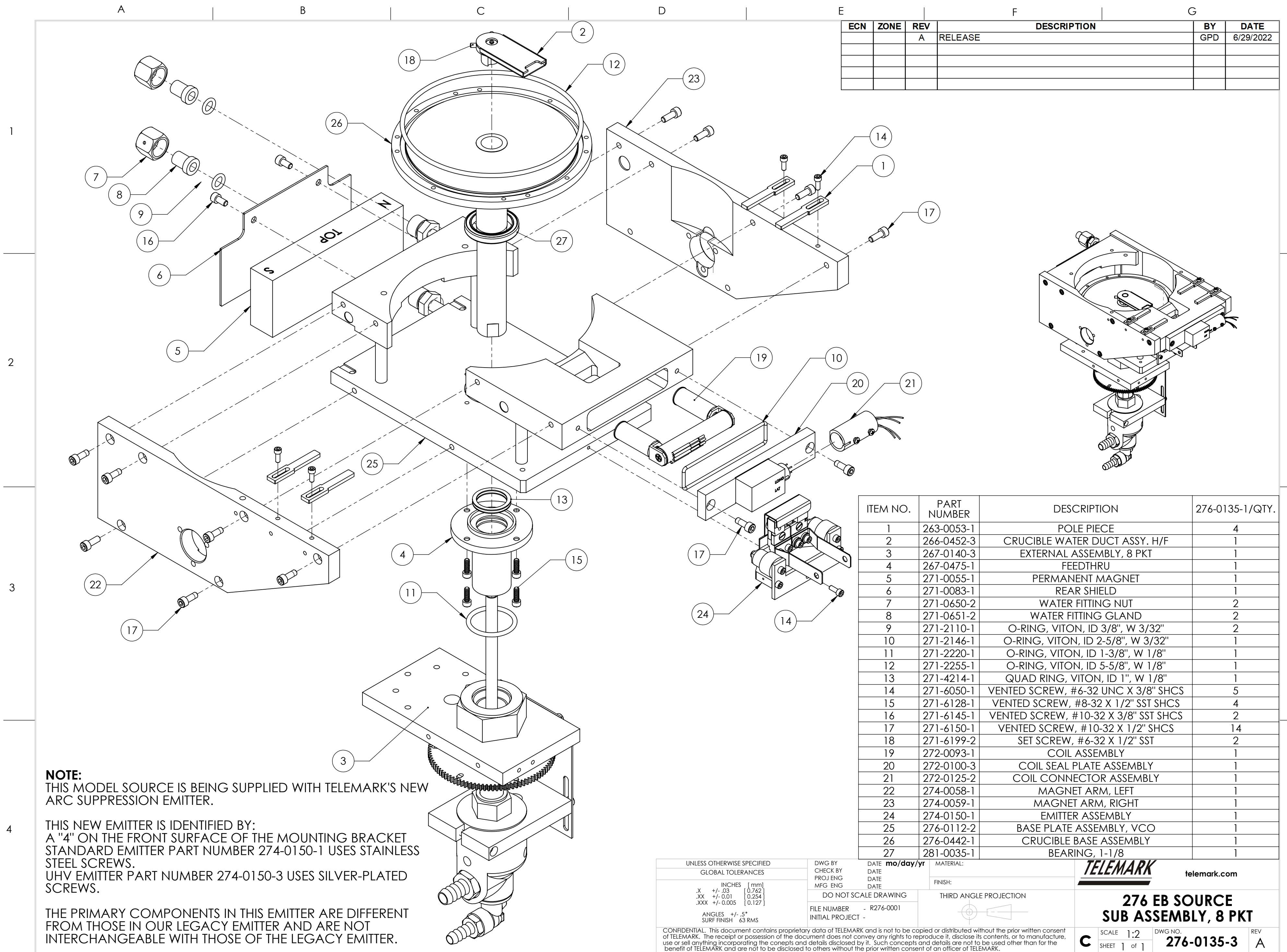
**276 EB SOURCE
SUB ASSEMBLY**

SCALE 1:2
SHEET 1 of 1

DWG NO.
276-0135-1

REV
E

CONFIDENTIAL. This document contains proprietary data of TELEMAR and is not to be copied or distributed without the prior written consent of TELEMAR. The receipt or possession of the document does not convey any rights to reproduce it, disclose its contents, or to manufacture, use or sell anything incorporating the concepts and details disclosed by it. Such concepts and details are not to be used other than for the benefit of TELEMAR and are not to be disclosed to others without the prior written consent of an officer of TELEMAR.




ECN	ZONE	REV	DESCRIPTION	BY	DATE
		A	RELEASE	GPD	6/29/2022

ITEM NO.	PART NUMBER	DESCRIPTION	276-0135-1/QTY.
1	263-0053-1	POLE PIECE	4
2	266-0452-3	CRUCIBLE WATER DUCT ASSY. H/F	1
3	267-0140-3	EXTERNAL ASSEMBLY, 8 PKT	1
4	267-0475-1	FEEDTHRU	1
5	271-0055-1	PERMANENT MAGNET	1
6	271-0083-1	REAR SHIELD	1
7	271-0650-2	WATER FITTING NUT	2
8	271-0651-2	WATER FITTING GLAND	2
9	271-2110-1	O-RING, VITON, ID 3/8", W 3/32"	2
10	271-2146-1	O-RING, VITON, ID 2-5/8", W 3/32"	1
11	271-2220-1	O-RING, VITON, ID 1-3/8", W 1/8"	1
12	271-2255-1	O-RING, VITON, ID 5-5/8", W 1/8"	1
13	271-4214-1	QUAD RING, VITON, ID 1", W 1/8"	1
14	271-6050-1	VENTED SCREW, #6-32 UNC X 3/8" SHCS	5
15	271-6128-1	VENTED SCREW, #8-32 X 1/2" SST SHCS	4
16	271-6145-1	VENTED SCREW, #10-32 X 3/8" SST SHCS	2
17	271-6150-1	VENTED SCREW, #10-32 X 1/2" SHCS	14
18	271-6199-2	SET SCREW, #6-32 X 1/2" SST	2
19	272-0093-1	COIL ASSEMBLY	1
20	272-0100-3	COIL SEAL PLATE ASSEMBLY	1
21	272-0125-2	COIL CONNECTOR ASSEMBLY	1
22	274-0058-1	MAGNET ARM, LEFT	1
23	274-0059-1	MAGNET ARM, RIGHT	1
24	274-0150-1	EMITTER ASSEMBLY	1
25	276-0112-2	BASE PLATE ASSEMBLY, VCO	1
26	276-0442-1	CRUCIBLE BASE ASSEMBLY	1
27	281-0035-1	BEARING, 1-1/8	1

NOTE:
THIS MODEL SOURCE IS BEING SUPPLIED WITH TELEMAR'S NEW ARC SUPPRESSION EMITTER.

THIS NEW EMITTER IS IDENTIFIED BY:
A "4" ON THE FRONT SURFACE OF THE MOUNTING BRACKET
STANDARD EMITTER PART NUMBER 274-0150-1 USES STAINLESS
STEEL SCREWS.
UHV EMITTER PART NUMBER 274-0150-3 USES SILVER-PLATED
SCREWS.

THE PRIMARY COMPONENTS IN THIS EMITTER ARE DIFFERENT
FROM THOSE IN OUR LEGACY EMITTER AND ARE NOT
INTERCHANGEABLE WITH THOSE OF THE LEGACY EMITTER.

UNLESS OTHERWISE SPECIFIED		DWG BY	DATE	MATERIAL:
GLOBAL TOLERANCES		CHECK BY	DATE	
INCHES [mm]		PROJ ENG	DATE	FINISH:
.X +/- .03 [0.762]		MFG ENG	DATE	
.XX +/- .01 [0.254]		DO NOT SCALE DRAWING		THIRD ANGLE PROJECTION
.XXX +/- .005 [0.127]		FILE NUMBER - R276-0001		
ANGLES +/- .5°		INITIAL PROJECT -		
SURF FINISH 63 RMS				
CONFIDENTIAL. This document contains proprietary data of TELEMAR and is not to be copied or distributed without the prior written consent of TELEMAR. The receipt or possession of the document does not convey any rights to reproduce it, disclose its contents, or to manufacture, use or sell anything incorporating the concepts and details disclosed by it. Such concepts and details are not to be used other than for the benefit of TELEMAR and are not to be disclosed to others without the prior written consent of an officer of TELEMAR.				

TELEMAR telemark.com	
276 EB SOURCE SUB ASSEMBLY, 8 PKT	
SCALE 1:2 SHEET 1 of 1	DWG NO. 276-0135-3 REV A



Optional Assemblies

Arc Suppression

A

B

C

D

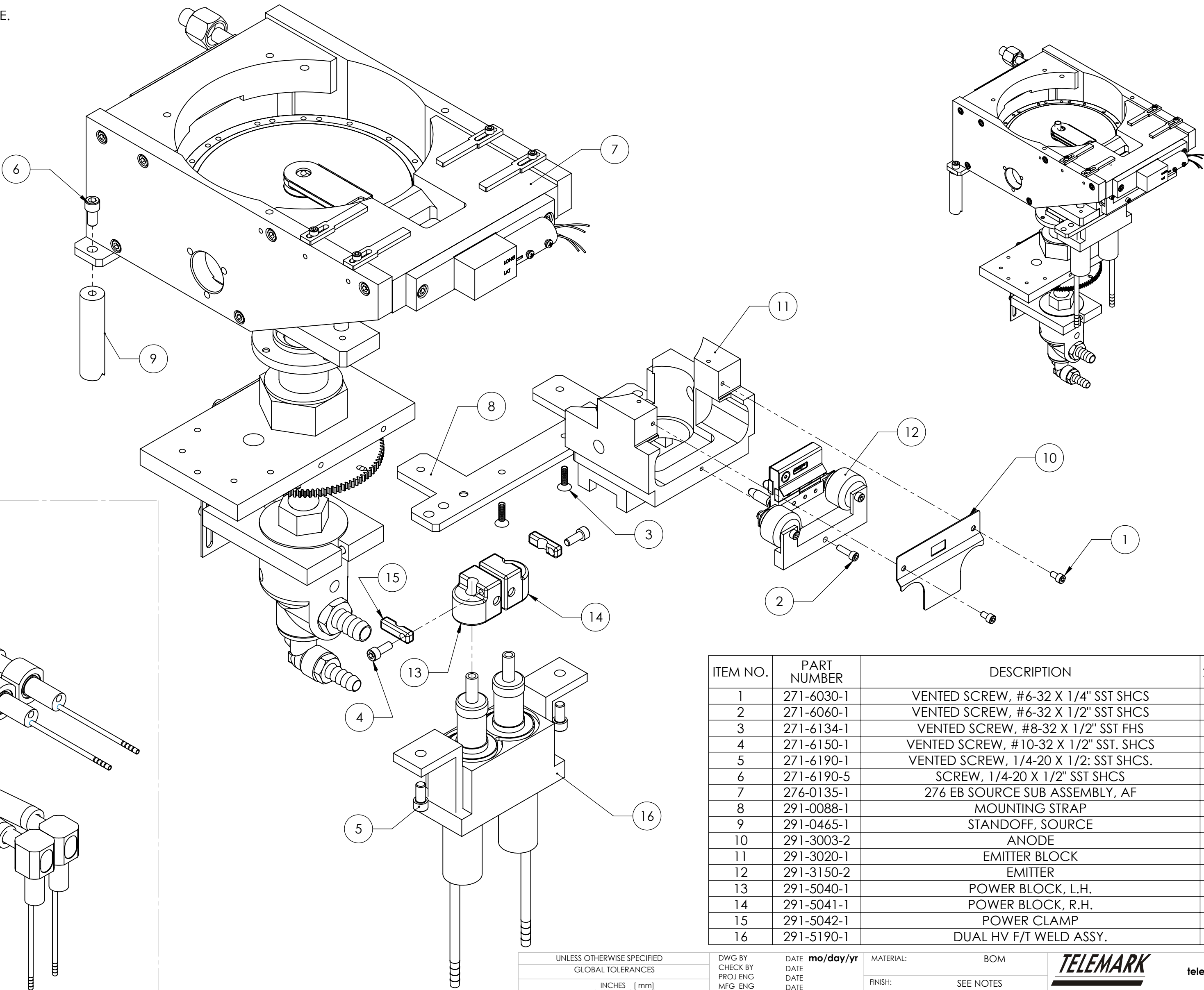
E

F

G

NOTE:
1. ITEM 7 IS THE SAME AS THE STANDARD 276 ASSEMBLY EXCEPT
THE BASE PLATE IS PART NUMBER 276-0112-4
AND ONLY ONE MOUNTING STRAP PART NUMBER
271-0088-1 IS USED.
2. ITEM 10 IS PART OF THE EMITTER ASSEMBLY
PART NUMBER 291-3150-2.
3. ITEM 16 IS THE STANDARD FEEDTHRU,
MANY OTHER OPTIONS ARE AVAILABLE.

ECN	ZONE	REV	DESCRIPTION	BY	DATE
		A	RELEASE	PWF	8/15/2012

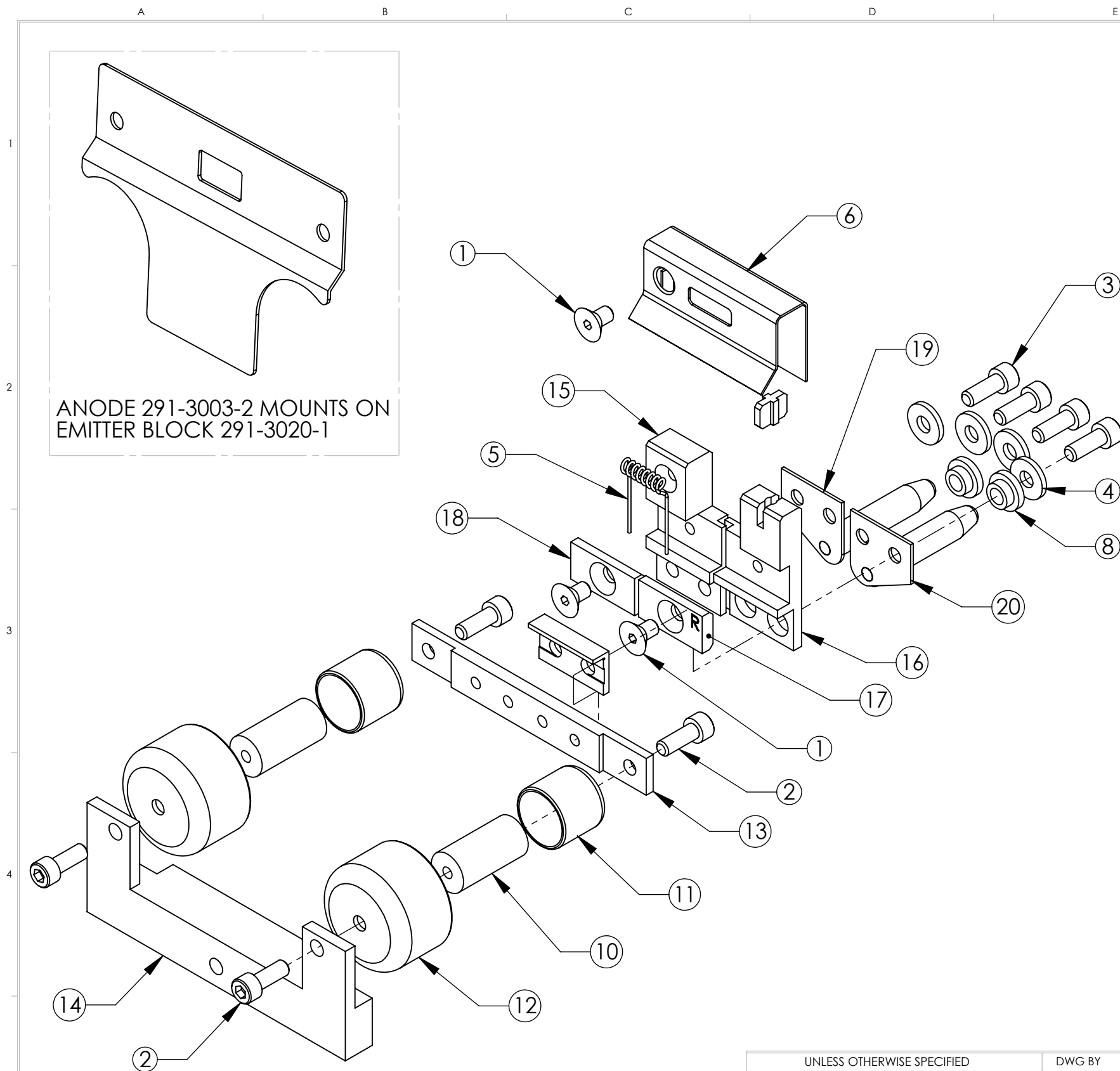


ITEM NO.	PART NUMBER	DESCRIPTION	276-5175-1/QTY.
1	271-6030-1	VENTED SCREW, #6-32 X 1/4" SST SHCS	2
2	271-6060-1	VENTED SCREW, #6-32 X 1/2" SST SHCS	1
3	271-6134-1	VENTED SCREW, #8-32 X 1/2" SST FHS	2
4	271-6150-1	VENTED SCREW, #10-32 X 1/2" SST. SHCS	2
5	271-6190-1	VENTED SCREW, 1/4-20 X 1/2: SST SHCS.	2
6	271-6190-5	SCREW, 1/4-20 X 1/2" SST SHCS	2
7	276-0135-1	276 EB SOURCE SUB ASSEMBLY, AF	1
8	291-0088-1	MOUNTING STRAP	1
9	291-0465-1	STANDOFF, SOURCE	2
10	291-3003-2	ANODE	1
11	291-3020-1	EMITTER BLOCK	1
12	291-3150-2	EMITTER	1
13	291-5040-1	POWER BLOCK, L.H.	1
14	291-5041-1	POWER BLOCK, R.H.	1
15	291-5042-1	POWER CLAMP	2
16	291-5190-1	DUAL HV F/T WELD ASSY.	1

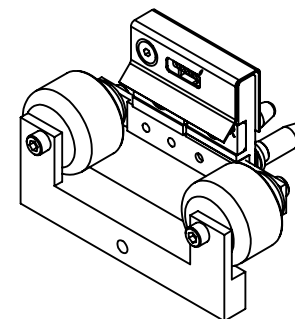
UNLESS OTHERWISE SPECIFIED GLOBAL TOLERANCES		DWG BY CHECK BY PROJ ENG MFG ENG	DATE DATE DATE	MATERIAL: BOM
INCHES [mm] X +/- .03 [0.762] .XX +/- 0.01 [0.254] .XXX +/- 0.005 [0.127]		DO NOT SCALE DRAWING		FINISH: SEE NOTES
ANGLES +/- .5° SURF FINISH .63 RMS		FILE NUMBER - 274-5175-1 INITIAL PROJECT -		THIRD ANGLE PROJECTION

CONFIDENTIAL. This document contains proprietary data of TELEMAR and is not to be copied or distributed without the prior written consent of TELEMAR. The receipt or possession of the document does not convey any rights to reproduce it, disclose its contents, or to manufacture, use or sell anything incorporating the concepts and details disclosed by it. Such concepts and details are not to be used other than for the benefit of TELEMAR and are not to be disclosed to others without the prior written consent of an officer of TELEMAR.

TELEMAR telemark.com	
276 ARC SUPPRESSION OPTION	
SCALE 1:2 SHEET 1 of 1	DWG NO. 276-5175-1 REV A



ANODE 291-3003-2 MOUNTS ON
EMITTER BLOCK 291-3020-1



ISOMETRIC VIEW

ECN	ZONE	REV	DESCRIPTION	BY	DATE
		A	RELEASE		12/16/2004
		A1	UPDATE	PWF	8/17/2010

ITEM NO.	QTY.	PART NO.	DESCRIPTION
1	3	271-6010-5	SCREW, #6-32 X 1/4" SLOT FLAT HEAD,TI
2	4	271-6050-1	VENTED SCREW, #6-32 X 3/8" SST SHCS.
3	4	271-6050-5	SCREW, #6-32 X 3/8" SHCS, TI
4	4	271-6242-1	FLAT WASHER, #6.SST.
5	1	273-0001-1	FILAMENT, 7 1/2 TURN
6	1	291-3004-1	BEAM FORMER
7	1	291-3005-1	INSULATOR, CROSS
8	2	291-3006-1	INSULATOR, COLLAR
9	1	291-3008-1	L INSULATOR
10	2	291-3010-1	HV INSULATOR
11	2	291-3011-1	HV SHIELD, ARC FREE
12	2	291-3013-1	HV SHIELD
13	1	291-3017-2	MOUNTING BRACKET
14	1	291-3018-1	EMITTER SUPPORT BRACKET
15	1	291-3031-1	CATHODE BLOCK, LEFT
16	1	291-3032-1	CATHODE BLOCK, RIGHT
17	1	291-3033-4	FILAMENT CLAMP, RIGHT
18	1	291-3033-3	FILAMENT CLAMP, LEFT
19	1	291-3035-1	EMITTER BUS BAR ASSY., LEFT
20	1	291-3036-1	EMITTER BUS BAR ASSY., RIGHT

UNLESS OTHERWISE SPECIFIED		DWG BY		DATE mo/day/yr		MATERIAL:		BOM		<div><div>TELEMARK</div><div>telemark.com</div><div>EMITTER ASSEMBLY, 270, 271, 274</div></div>	
GLOBAL TOLERANCES		CHECK BY		DATE		FINISH:		SEE NOTES			
		PROJ ENG		DATE							
		MFG ENG		DATE							
INCHES [mm] .X +/- .03 [0.762] .XX +/- 0.01 [0.254] .XXX +/- 0.005 [0.127] ANGLES +/- .5° SURF FINISH 63 RMS		DO NOT SCALE DRAWING		THIRD ANGLE PROJECTION							
		FILE NUMBER - 291-3150-2									
		INITIAL PROJECT -									
CONFIDENTIAL. This document contains proprietary data of TELEMARK and is not to be copied or distribetd without the prior written consent of TELEMARK. The receipt or possession of the document does not convey any rights to reproduce it, disclose its contents, or to manufacture, use or sell anything incorporating the conepts and details disclosed by it. Such conepts andndetails are not to be used other than for the benefit of TELEMARK and are not to be disclosed to others without the prior written consent of an officer of TELEMARK.											
B		SCALE 1:1		DWG NO.		291-3150-2		REV A			
		SHEET 1 of 1									