

# **TELEMARK** 279 Multi Pocket E-Beam Source Drawings

The current version of this drawing pdf can be found at

<https://telemark.com/uhv-e-beam-sources/near-uhv-multi-pocket-sources/>

Drawing	Rev.	Description	Page
<b>Reference Dimensions</b>			2
R279-0001	A1	Model 279 E-Beam Source Dimensions	3
<b>Model Assemblies</b>			5
279-9902-1	B	Model 279-02 EB Source, 4 pkt, 15cc, VCR	6
279-9902-2	B	Model 279-02 EB Source, 4 pkt, 15cc, CFF	7
279-9906-1	B	Model 279-06 EB Source, 6 pkt, 7cc, VCR	8
279-9906-2	B	Model 279-06 EB Source, 6 pkt, 7cc, CFF	9
279-9908-1	B	Model 279-08 EB Source, 4 pkt, 25cc, VCR	10
279-9908-2	B	Model 279-08 EB Source, 4 pkt, 25cc, CFF	11
279-9912-1	B	Model 279-12 EB Source, 6 pkt, 15cc, VCR	12
279-9912-2	B	Model 279-12 EB Source, 6 pkt, 15cc, CFF	13
279-9914-1	C	Model 279-14 EB Source, 8 pkt, 7cc, VCR	14
279-9914-2	C	Model 279-14 EB Source, 8 pkt, 7cc, CFF	15
279-9918-1	B	Model 279-18 EB Source, 6 pkt, 25cc, VCR	16
279-9918-2	B	Model 279-18 EB Source, 6 pkt, 25cc, CFF	17
279-9920-1	B	Model 279-20 EB Source, 4 pkt, 30cc, VCR	18
279-9920-2	B	Model 279-20 EB Source, 4 pkt, 30cc, CFF	19
279-9928-1	B	Model 279-28 EB Source, 4 pkt, 7cc, VCR	20
279-9928-2	B	Model 279-28 EB Source, 4 pkt, 7cc, CFF	21
279-9962-1	B	Model 279-62 EB Source, 4 pkt, 40cc, VCR	22
279-9962-2	B	Model 279-62 EB Source, 4 pkt, 40cc, CFF	23
<b>Common Assemblies</b>			24
267-9025-1	B	Manual Drive Assembly	25
269-1140-1	B	External Assembly	26
269-1140-3	A	External Assembly, 8 pocket	27
274-0150-3	C	Emitter Assembly, UHV	28
279-0135-1	E	EB Source Sub Assembly, VCR	29
279-0135-2	D	EB Source Sub Assembly, CFF	30
279-0135-3	A	EB Source Sub Assembly, VCR, 8 pocket	31
279-0135-4	A	EB Source Sub Assembly, CFF, 8 pocket	32



# Reference Dimensions

## **E-Beam Source**



A

B

C

D

E

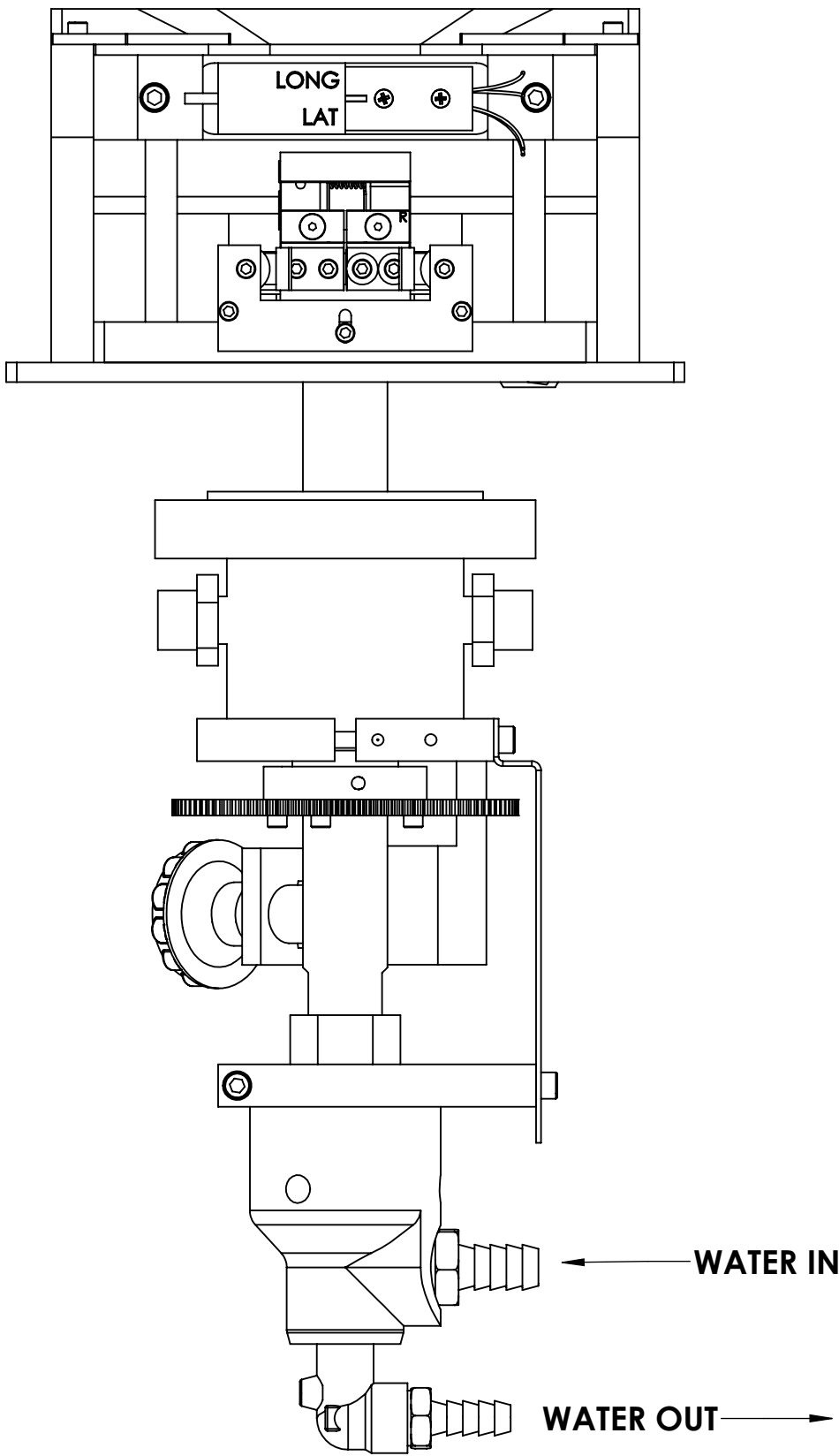
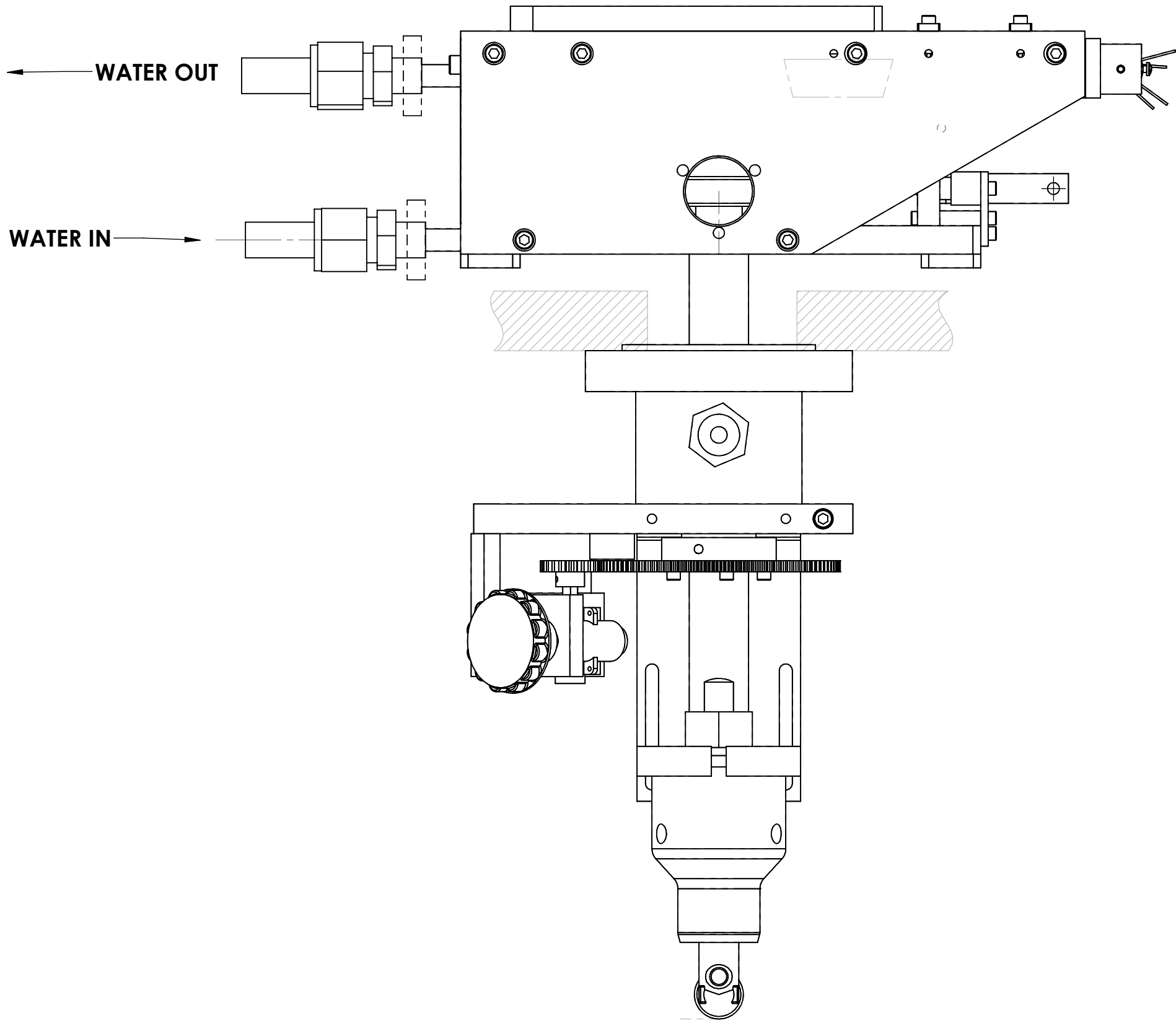
F


G

ECN	ZONE	REV	DESCRIPTION	BY	DATE
		A	RELEASE	PWF	7/15/2010
		A1	UPDATE	PWF	5/3/2011

# MODEL 279

## IMPORTANT WATER LINE CONNECTION INFORMATION



UNLESS OTHERWISE SPECIFIED		DWG BY	DATE	MATERIAL:	<b>TELEMARK</b>	telemark.com
GLOBAL TOLERANCES		CHECK BY	DATE			
		PROJ ENG	DATE			
		MFG ENG	DATE			
INCHES [mm]		DO NOT SCALE DRAWING		THIRD ANGLE PROJECTION		<b>MODEL 279 EB SOURCE</b>
.X +/- .03 [0.762]		FILE NUMBER - R279-0001				
.XX +/- .01 [0.254]		INITIAL PROJECT -				
.XXX +/- .005 [0.127]						
ANGLES +/- .5°						
SURF FINISH .63 RMS						
<p>CONFIDENTIAL. This document contains proprietary data of TELEMARK and is not to be copied or distributed without the prior written consent of TELEMARK. The receipt or possession of the document does not convey any rights to reproduce it, disclose its contents, or to manufacture, use or sell anything incorporating the concepts and details disclosed by it. Such concepts and details are not to be used other than for the benefit of TELEMARK and are not to be disclosed to others without the prior written consent of an officer of TELEMARK.</p>						
<b>C</b>	SCALE	1:2	DWG NO.		REV	
	SHEET	2 of 2	<b>R279-0001</b>		<b>A1</b>	



# Model Assemblies

## E-Beam Sources



1

2

3

4

5

ECN	ZONE	REV	DESCRIPTION	BY	DATE
		A	RELEASE	PWF	5/21/2010
		B	UPDATE SCREW TYPE	PWF	8/29/2011

ITEM NO.	PART NUMBER	DESCRIPTION	279-9902-2/QTY.
1	271-6150-6	VENTED SCREW, #10-32 X 1/2" SST SHCS, SILVER	2
2	271-6170-6	VENTED SCREW, #10-32 X 5/8" SST. SHCS, SLIVER	2
3	274-0073-1	COVER, 4 POCKET	1
4	279-0135-2	279 EB SOURCE SUB ASSEMBLY, 1.33 CF	1
5	279-0210-1	CRUCIBLE, 4X 15CC	1

UNLESS OTHERWISE SPECIFIED  
GLOBAL TOLERANCES

	INCHES	[mm]
.X	+/- .03	[0.762]
.XX	+/- 0.01	[0.254]
.XXX	+/- 0.005	[0.127]

ANGLES +/- .5°  
SURF FINISH 63 RMS

DWG BY  
CHECK BY  
PROJ ENG  
MFG ENG

DATE  
DATE  
DATE  
DATE

mo/day/yr

MATERIAL: B.O.M

FINISH:

THIRD ANGLE PROJECTION

FILE NUMBER - 279-99xx-1  
INITIAL PROJECT - 279

TELEMARK

telemark.com

MODEL 279-02 EB SOURCE,  
4 PKT, 15CC, CFF

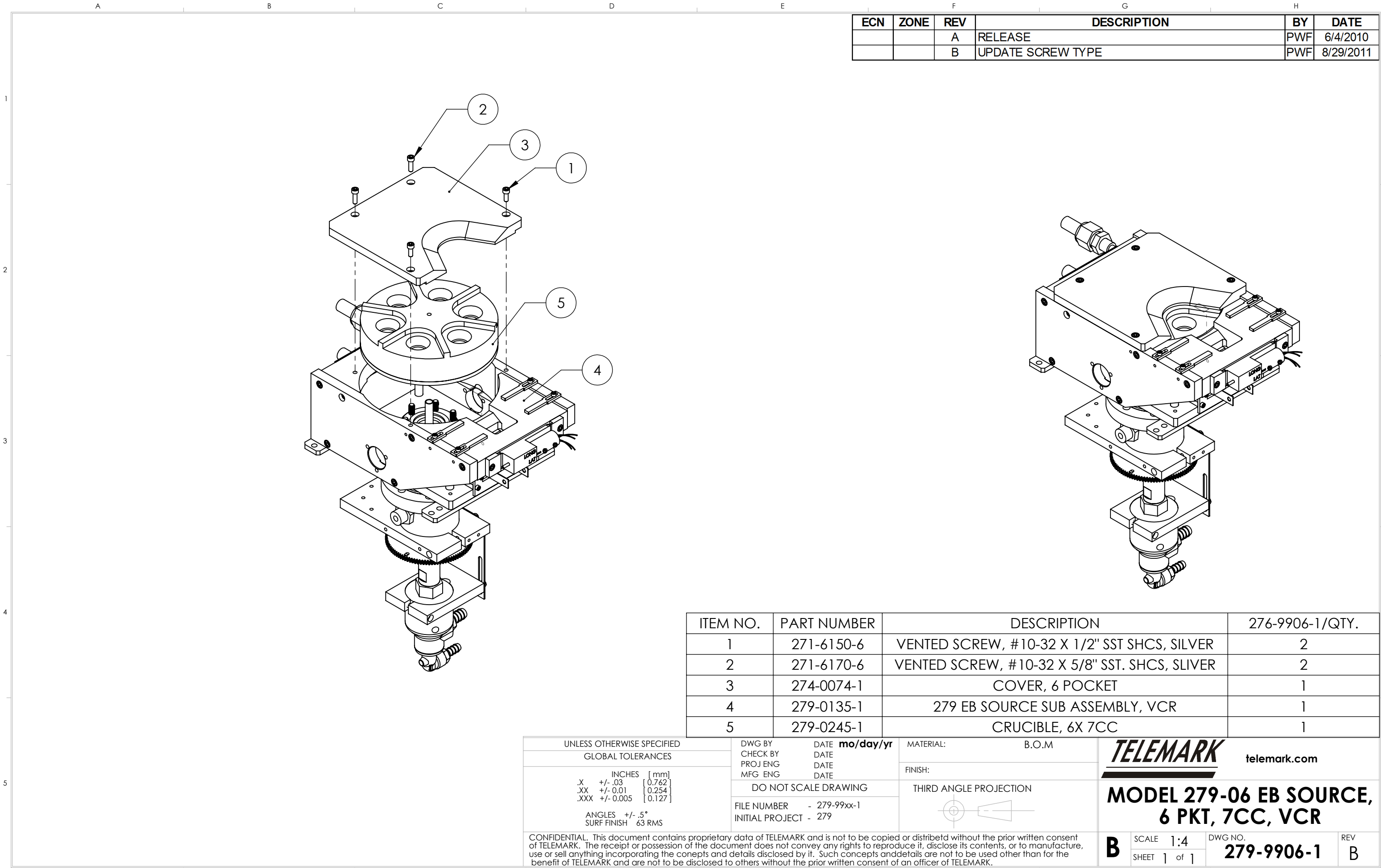
B

SCALE 1:4  
SHEET 1 of 1

DWG NO. 279-9902-2

REV B

CONFIDENTIAL. This document contains proprietary data of TELEMARK and is not to be copied or distribetd without the prior written consent of TELEMARK. The receipt or possession of the document does not convey any rights to reproduce it, disclose its contents, or to manufacture, use or sell anything incorporating the conepts and details disclosed by it. Such concepts anddetails are not to be used other than for the benefit of TELEMARK and are not to be disclosed to others without the prior written consent of an officer of TELEMARK.





1

2

3

4

5

1

2

3

4

5

ECN	ZONE	REV	DESCRIPTION	BY	DATE
		A	RELEASE	PWF	6/4/2010
		B	UPDATE SCREW TYPE	PWF	8/29/2011

ITEM NO.	PART NUMBER	DESCRIPTION	279-9906-2/QTY.
1	271-6150-6	VENTED SCREW, #10-32 X 1/2" SST SHCS, SILVER	2
2	271-6170-6	VENTED SCREW, #10-32 X 5/8" SST. SHCS, SLIVER	2
3	274-0074-1	COVER, 6 POCKET	1
4	279-0135-2	279 EB SOURCE SUB ASSEMBLY, 1.33 CF	1
5	279-0245-1	CRUCIBLE, 6X 7CC	1

UNLESS OTHERWISE SPECIFIED

GLOBAL TOLERANCES

INCHES

[mm]

.X

+/- .03

[0.762]

.XX

+/- 0.01

[0.254]

.XXX

+/- 0.005

[0.127]

ANGLES

+/- .5°

SURF FINISH

63 RMS

DWG BY

CHECK BY

PROJ ENG

MFG ENG

DATE

DATE

DATE

DATE

mo/day/yr

MATERIAL:

B.O.M

FINISH:

DO NOT SCALE DRAWING

THIRD ANGLE PROJECTION

FILE NUMBER

- 279-99xx-1

INITIAL PROJECT

- 279

TELEMARK

telemark.com

MODEL 279-06 EB SOURCE,

6 PKT, 7CC, CFF

B

SCALE

1:4

SHEET

1 of 1

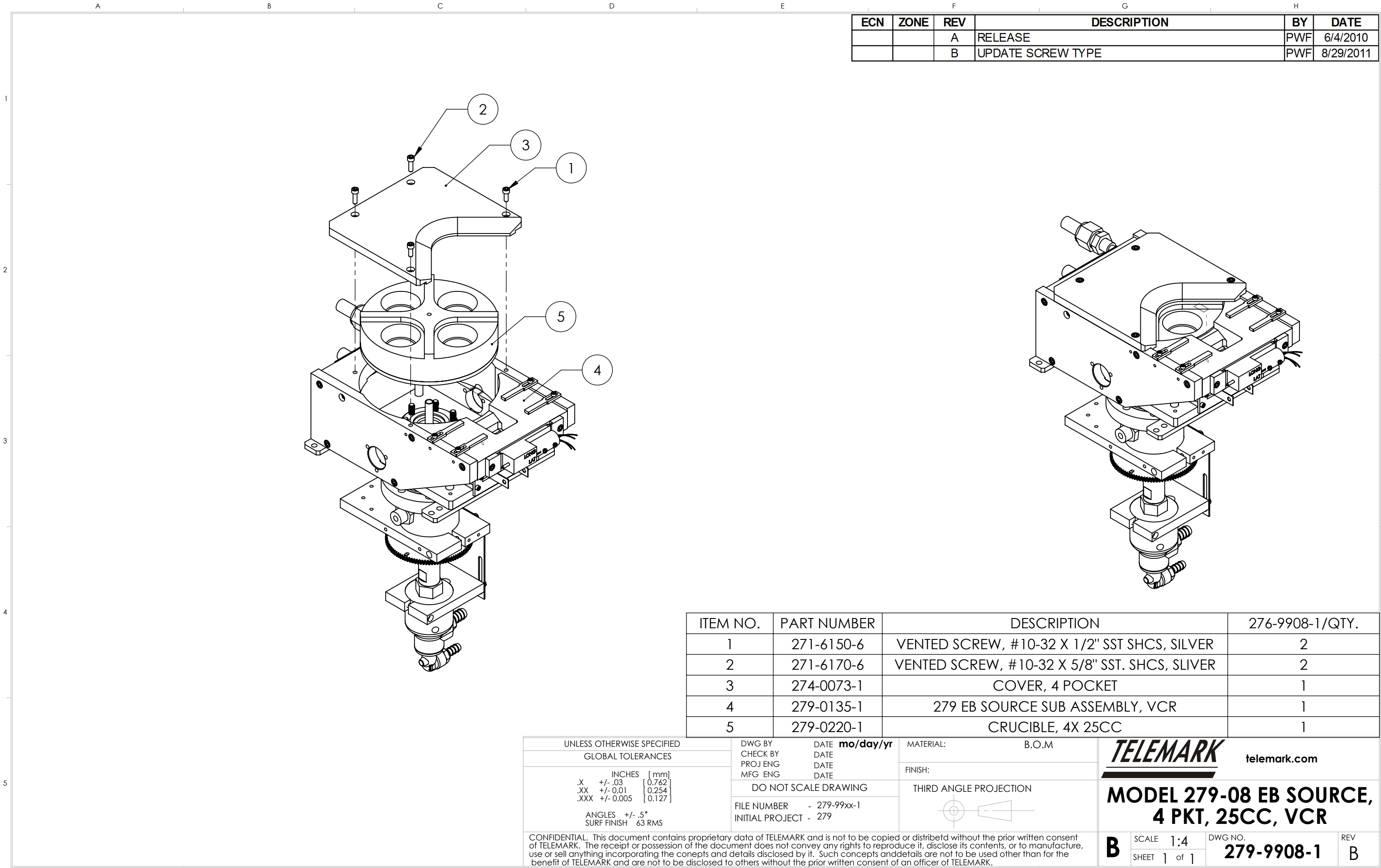
DWG NO.

279-9906-2

REV

B

CONFIDENTIAL. This document contains proprietary data of TELEMARK and is not to be copied or distribetd without the prior written consent of TELEMARK. The receipt or possession of the document does not convey any rights to reproduce it, disclose its contents, or to manufacture, use or sell anything incorporating the conepts and details disclosed by it. Such concepts anddetails are not to be used other than for the benefit of TELEMARK and are not to be disclosed to others without the prior written consent of an officer of TELEMARK.





1

2

3

4

5

1

2

3

4

5

ECN	ZONE	REV	DESCRIPTION	BY	DATE
		A	RELEASE	PWF	6/4/2010
		B	UPDATE SCREW TYPE	PWF	8/29/2011

ITEM NO.	PART NUMBER	DESCRIPTION	276-9912-1/QTY.
1	271-6150-6	VENTED SCREW, #10-32 X 1/2" SST SHCS, SILVER	2
2	271-6170-6	VENTED SCREW, #10-32 X 5/8" SST. SHCS, SLIVER	2
3	274-0074-1	COVER, 6 POCKET	1
4	279-0135-1	279 EB SOURCE SUB ASSEMBLY, VCR	1
5	279-0255-1	CRUCIBLE, 6X 15CC	1

UNLESS OTHERWISE SPECIFIED

GLOBAL TOLERANCES

	INCHES	[mm]
.X	+/- .03	[0.762]
.XX	+/- 0.01	[0.254]
.XXX	+/- 0.005	[0.127]

ANGLES

+/- .5°

SURF FINISH

63 RMS

DWG BY

CHECK BY

PROJ ENG

MFG ENG

DATE

DATE

DATE

DATE

mo/day/yr

MATERIAL:

B.O.M

FINISH:

THIRD ANGLE PROJECTION

FILE NUMBER

- 279-99xx-1

INITIAL PROJECT

- 279

TELEMARK

telemark.com

MODEL 279-12 EB SOURCE,

6 PKT, 15CC, VCR

B

SCALE

1:4

SHEET

1 of 1

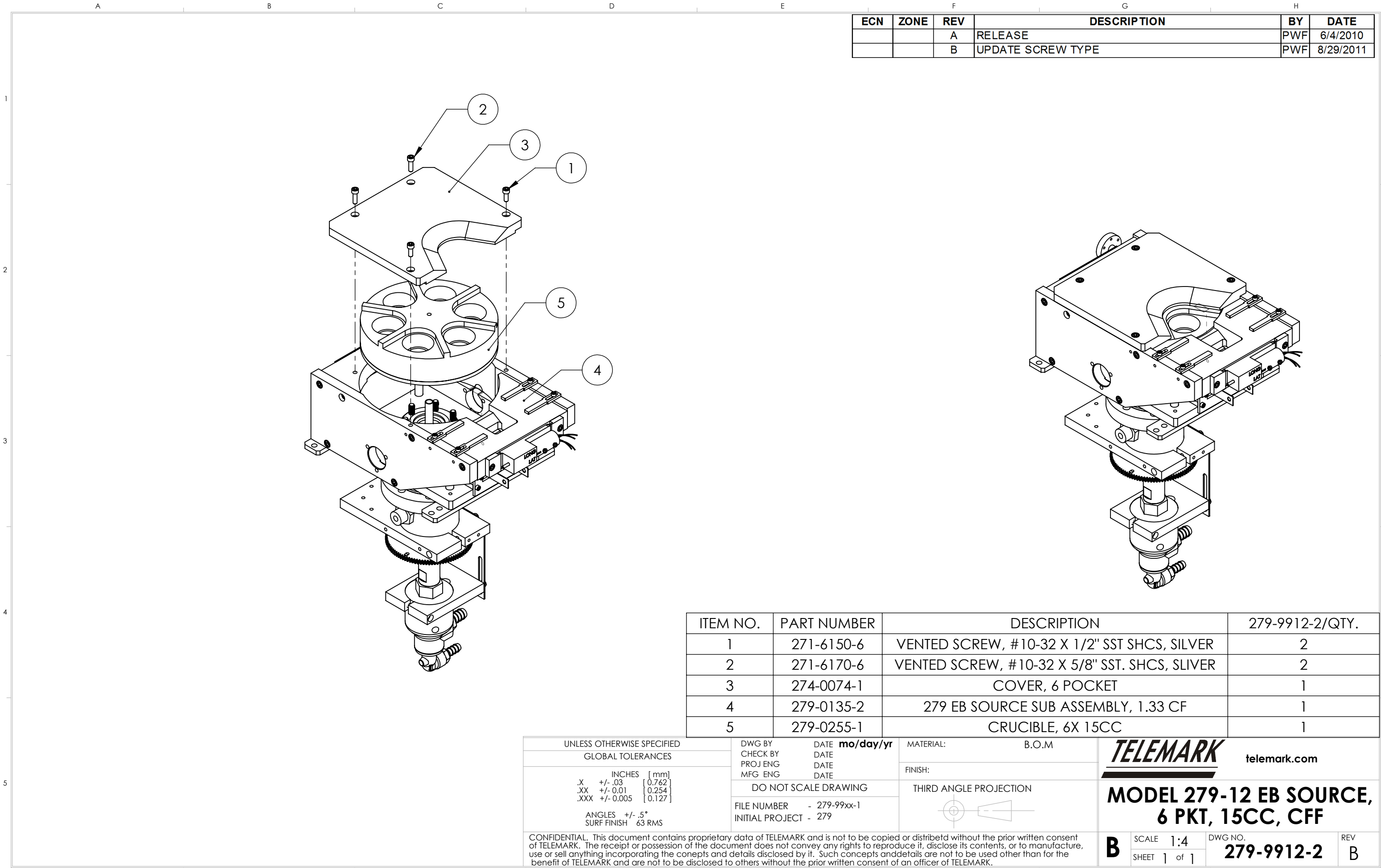
DWG NO.

279-9912-1

REV

B

CONFIDENTIAL. This document contains proprietary data of TELEMARK and is not to be copied or distribetd without the prior written consent of TELEMARK. The receipt or possession of the document does not convey any rights to reproduce it, disclose its contents, or to manufacture, use or sell anything incorporating the conepts and details disclosed by it. Such concepts anddetails are not to be used other than for the benefit of TELEMARK and are not to be disclosed to others without the prior written consent of an officer of TELEMARK.









1

2

3

4

5

ECN	ZONE	REV	DESCRIPTION	BY	DATE
		A	RELEASE	PWF	6/4/2010
		B	UPDATE SCREW TYPE	PWF	8/29/2011

ITEM NO.	PART NUMBER	DESCRIPTION	276-9918-1/QTY.
1	271-6150-6	VENTED SCREW, #10-32 X 1/2" SST SHCS, SILVER	2
2	271-6170-6	VENTED SCREW, #10-32 X 5/8" SST. SHCS, SLIVER	2
3	274-0074-1	COVER, 6 POCKET	1
4	279-0135-1	279 EB SOURCE SUB ASSEMBLY, VCR	1
5	279-0257-1	CRUCIBLE, 6X 25CC	1

UNLESS OTHERWISE SPECIFIED  
GLOBAL TOLERANCES

	INCHES	[mm]
.X	+/- .03	[0.762]
.XX	+/- 0.01	[0.254]
.XXX	+/- 0.005	[0.127]

ANGLES +/- .5°  
SURF FINISH 63 RMS

DWG BY  
CHECK BY  
PROJ ENG  
MFG ENG

DATE  
DATE  
DATE  
DATE

mo/day/yr

MATERIAL: B.O.M

FINISH:

THIRD ANGLE PROJECTION

FILE NUMBER - 279-99xx-1  
INITIAL PROJECT - 279

TELEMARK

telemark.com

MODEL 279-18 EB SOURCE,  
6 PKT, 25CC, VCR

B

SCALE 1:4  
SHEET 1 of 1

DWG NO.  
279-9918-1

REV  
B

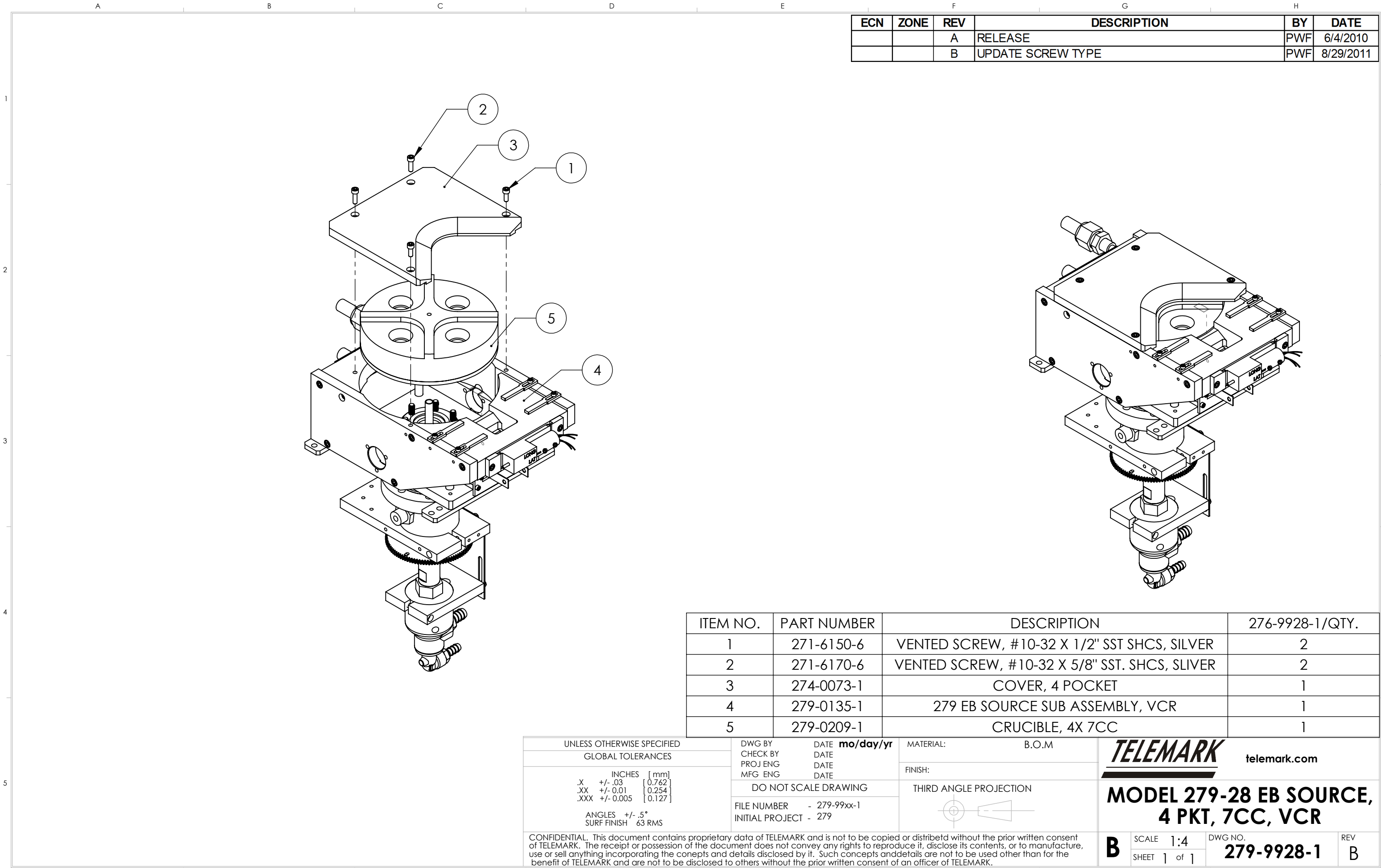
CONFIDENTIAL. This document contains proprietary data of TELEMARK and is not to be copied or distribetd without the prior written consent of TELEMARK. The receipt or possession of the document does not convey any rights to reproduce it, disclose its contents, or to manufacture, use or sell anything incorporating the conepts and details disclosed by it. Such concepts anddetails are not to be used other than for the benefit of TELEMARK and are not to be disclosed to others without the prior written consent of an officer of TELEMARK.

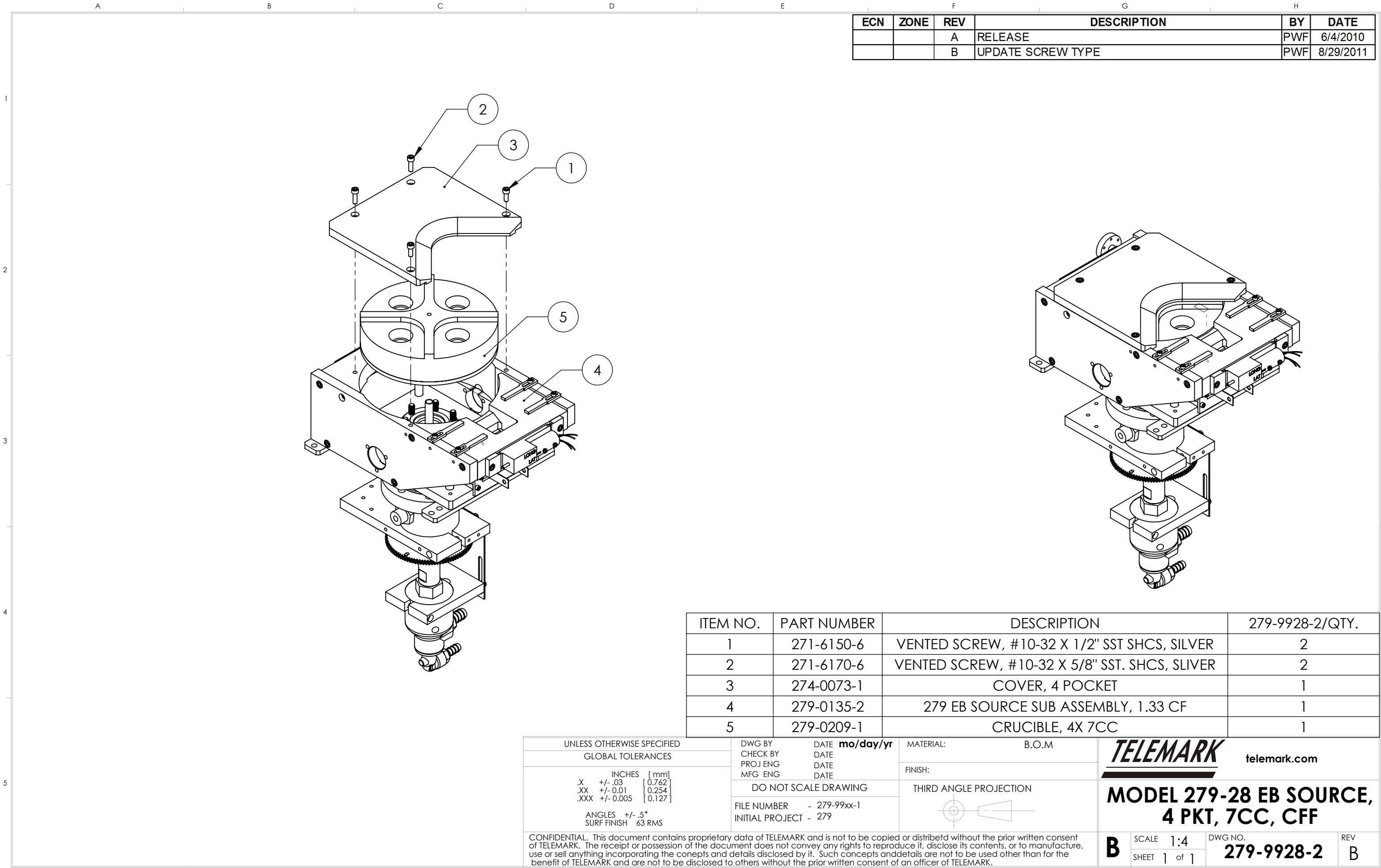






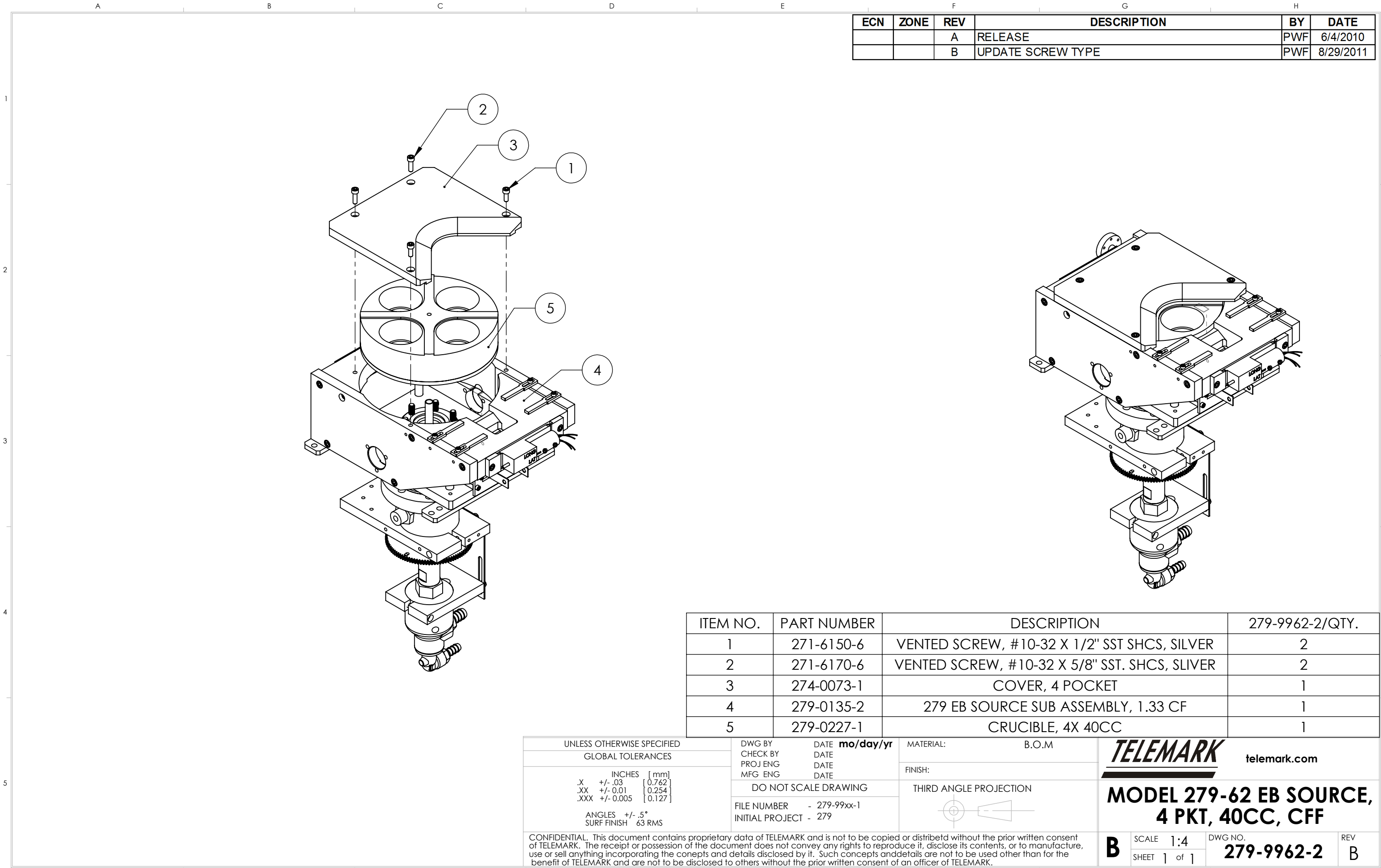












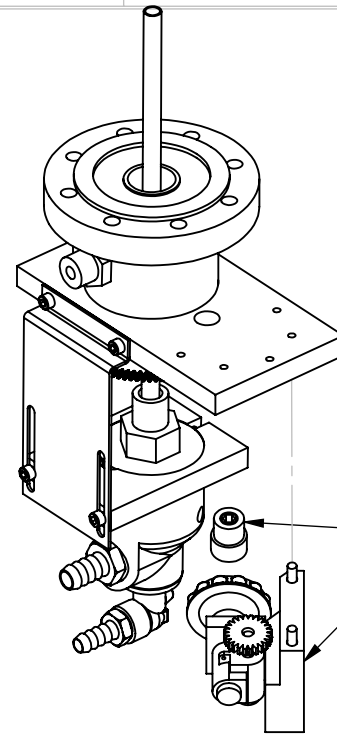
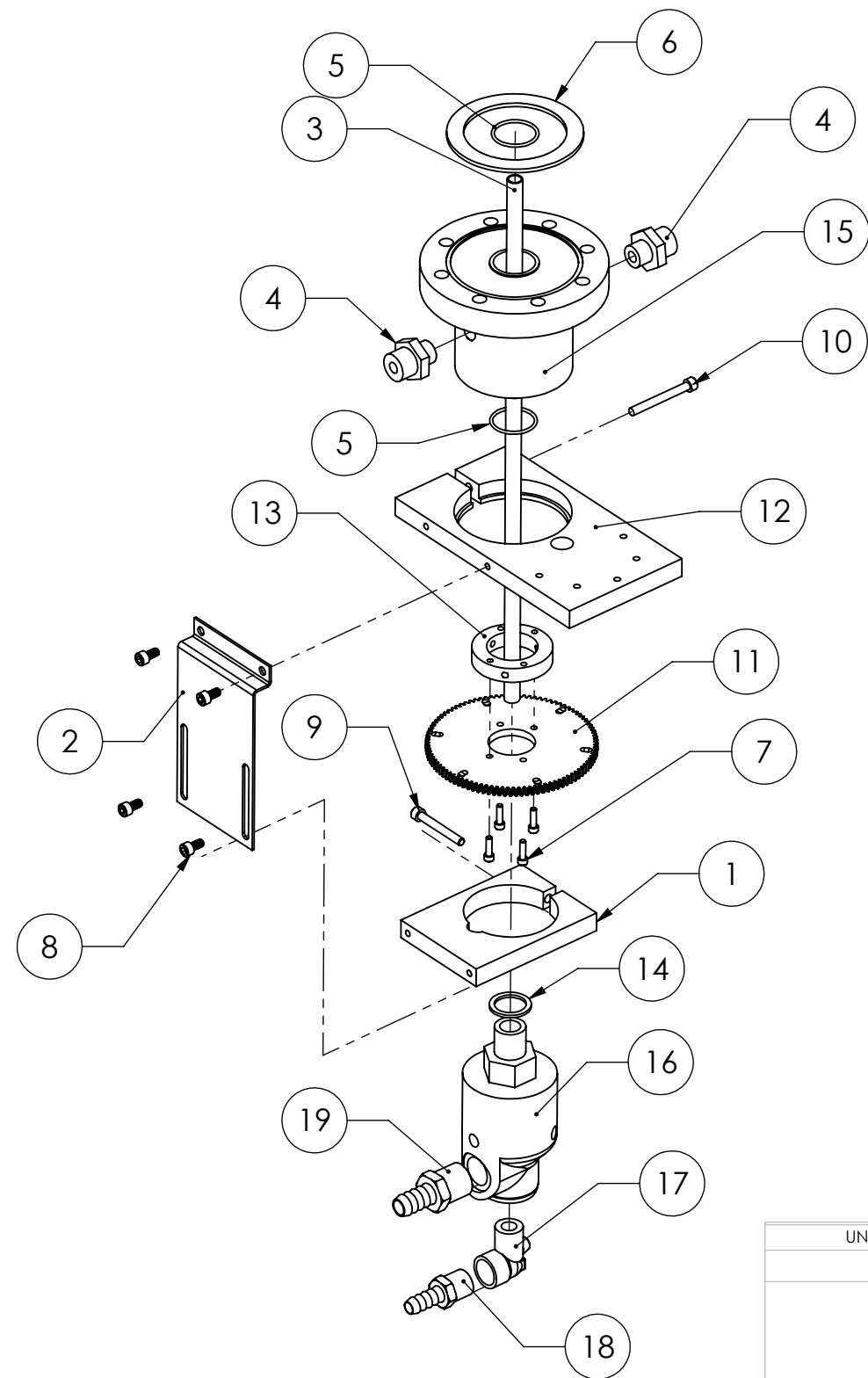


# Common Assemblies

**E-Beam Source**







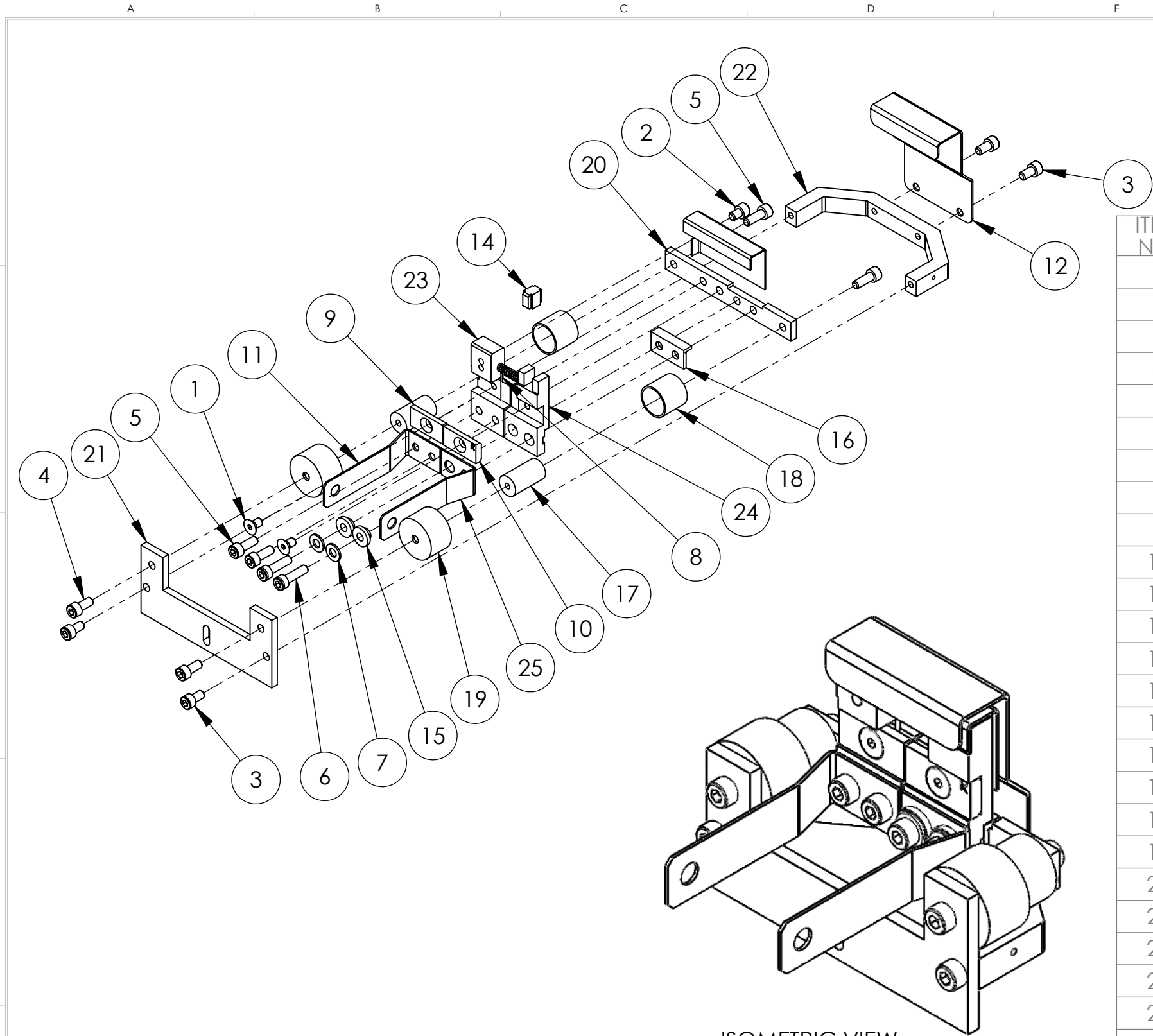
OPTIONAL MANUAL DRIVE 267-9025-1

NOTE:  
CONSULT FACTORY FOR PROPER LENGTH OF PART 269-1455-2  
FOR YOUR INSTALLATION

ITEM NO.	PART NUMBER	DESCRIPTION	269-1140-1/QTY.
1	267-0170-1	UNION CLAMP	1
2	267-0171-1	UNION STRAP	1
3	269-1455-2	WATER INLET TUBE	1
4	271-0671-2	WATER FITTING, 3/8 TUBE X 1/8 ISO TAPER THREAD	2
5	271-2022-1	O-RING, VITON, ID 1", W 1/16"	2
6	271-3621-1	GASKET, CFF 4.5" SILVER PLATED	1
7	271-6060-9	SCREW, #6-32 X 1/2" SST SHCS	4
8	271-6145-9	SCREW, #10-32 X 3/8" SST SHCS	4
9	271-6176-9	SCREW, #10-32 X 1/2" SST SHCS.	1
10	271-6178-9	SCREW, #10-32 X 1-3/4" SST SHCS.	1
11	281-0149-1	GEAR	1
12	281-0160-1	CLAMP	1
13	281-0162-1	CLAMP	1
14	281-2010-1	GASKET, WATER UNION	1
15	281-4010-1	MAGNETIC SEAL FEEDTHROUGH	1
16	281-4020-1	WATER UNION	1
17	281-4022-1	WATER FITTING ELBOW, 3/8 NPT-F X 3/8 TB	1
18	281-4023-1	WATER FITTING, 1/2 NPT X 1/2 TB	1
19	281-4024-1	WATER FITTING, 3/8 NPT X 1/2 TB	1

UNLESS OTHERWISE SPECIFIED		DWG BY	DATE	MATERIAL:	-	<div>TELEMARK</div> <div>telemark.com</div>
GLOBAL TOLERANCES		CHECK BY	DATE			
INCHES [mm] .X +/- .03 [0.762] .XX +/- 0.01 [0.254] .XXX +/- 0.005 [0.127]  ANGLES +/- .5° SURF FINISH 63 RMS		PROJ ENG	DATE	FINISH:	B.O.M	
		MFG ENG	DATE			
		DO NOT SCALE DRAWING		THIRD ANGLE PROJECTION		<div>EXTERNAL ASSEMBLY</div>
		FILE NUMBER - 269-1140-1 INITIAL PROJECT - 269				
<div>CONFIDENTIAL. This document contains proprietary data of TELEMARK and is not to be copied or distributed without the prior written consent of TELEMARK. The receipt or possession of the document does not convey any rights to reproduce it, disclose its contents, or to manufacture, use or sell anything incorporating the concepts and details disclosed by it. Such concepts and details are not to be used other than for the benefit of TELEMARK and are not to be disclosed to others without the prior written consent of an officer of TELEMARK.</div>						
<div>B</div>		SCALE 1:4		DWG NO.		REV B
		SHEET 1 of 1		269-1140-1		





ISOMETRIC VIEW

ECN	ZONE	REV	DESCRIPTION	BY	DATE
		A	RELEASE	GPD	6/19/2017
		B	REVISED PARTS	GPD	10/2/2017
990811		C	P/N FROM 271-6050-6 TO 271-6040-6, 2 PLACES	GPD	2/1/2018

ITEM NO.	PART NUMBER	DESCRIPTION	QTY.
1	271-6010-5	SCREW, #6-32 X 1/4" SLOT FLAT HEAD, Ti	2
2	271-6020-5	SCREW, #6-32 X 3/16" TI SHCS	1
3	271-6030-6	VENTED SCREW, #6-32 X 1/4" SST SHCS, SILVER	4
4	271-6040-6	VENTED SCREW, #6-32 X 5/16 SST. SHCS, SILVER	2
5	271-6050-6	VENTED SCREW, #6-32 X 3/8" SST SHCS, SILVER	4
6	271-6060-6	VENTED SCREW, #6-32 X 1/2" SST SHCS, SILVER	2
7	271-6242-1	FLAT WASHER, #6 SST	2
8	273-0001-1	FILAMENT, 7-1/2 TURN	1
9	273-0033-3	FILAMENT CLAMP, LEFT	1
10	273-0033-4	FILAMENT CLAMP, RIGHT	1
11	273-0035-1	EMITTER BUS BAR, LEFT	1
12	274-0003-7	ANODE	1
13	274-0004-7	BEAM FORMER	1
14	274-0005-1	INSULATOR, CROSS	1
15	274-0006-1	INSULATOR, COLLAR	2
16	274-0008-1	INSULATOR, L	1
17	274-0010-1	INSULATOR, HV	2
18	274-0011-1	HV SHIELD	2
19	274-0011-2	HV SHIELD	2
20	274-0017-2	MOUNTING BRACKET	1
21	274-0018-2	EMITTER SUPPORT BRACKET	1
22	274-0019-7	U-BRACKET	1
23	274-0031-1	CATHODE BLOCK, LEFT	1
24	274-0032-1	CATHODE BLOCK, RIGHT	1
25	274-0036-1	EMITTER BUSS BAR, RIGHT	1

UNLESS OTHERWISE SPECIFIED	
GLOBAL TOLERANCES	
	INCHES [mm]
.X	+/- .03 [0.762]
.XX	+/- 0.01 [0.254]
.XXX	+/- 0.005 [0.127]
ANGLES +/- .5°	
SURF FINISH 63 RMS	

DWG BY <b>G. DION</b>	DATE <b>7-21-2015</b>
CHECK BY	DATE
PROJ ENG	DATE
MFG ENG	DATE
DO NOT SCALE DRAWING	
FILE NUMBER	- 274-0150-3
INITIAL PROJECT	-

MATERIAL:	SEE PARTS LIST
FINISH:	SEE NOTES
THIRD ANGLE PROJECTION	

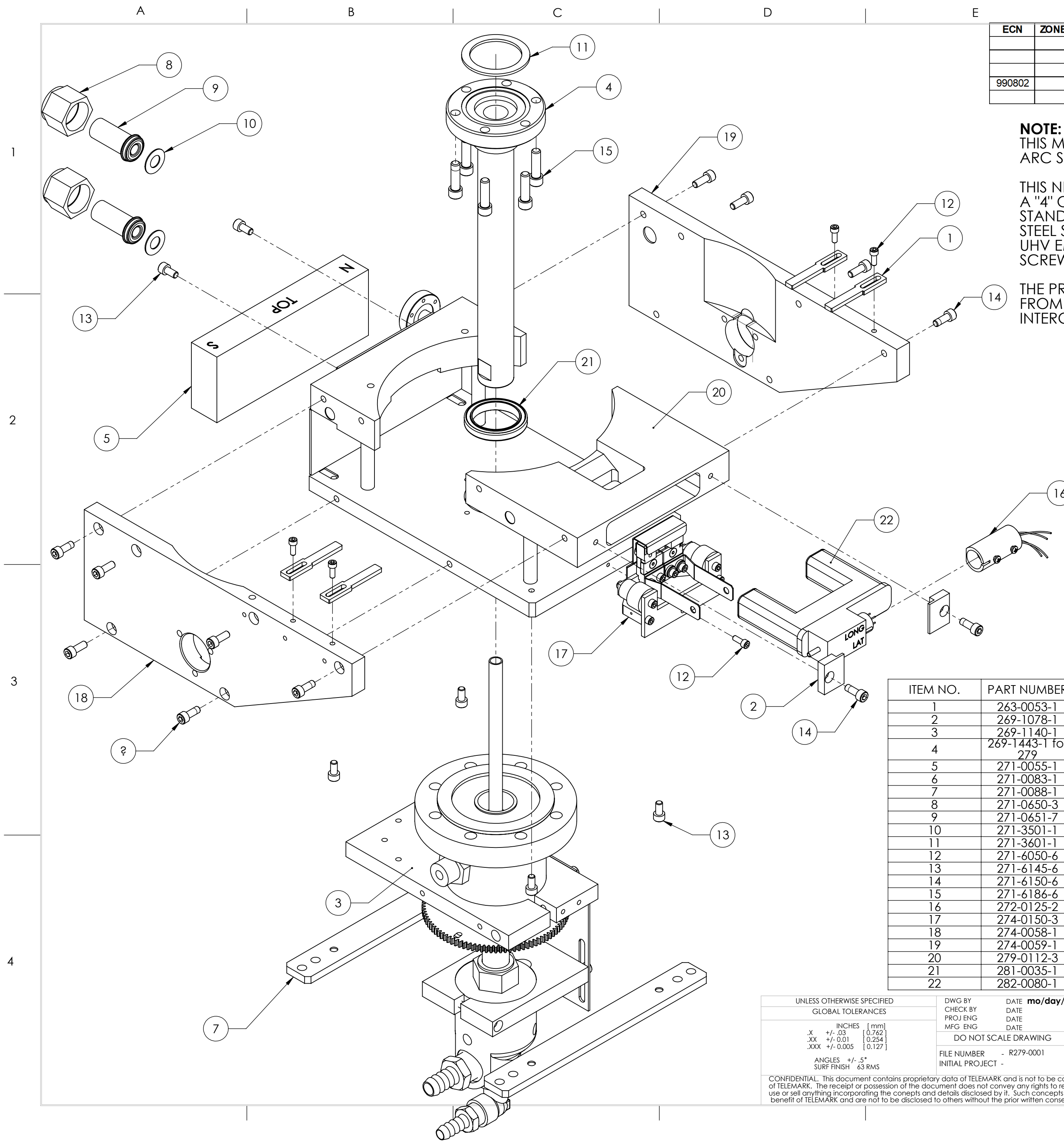
**TELEMARK**  
Battle Ground, WA

**EMITTER ASSEMBLY, UHV**

**B** SCALE 1:1 SHEET 1 of 1 DWG NO. **274-0150-3** REV **C**

CONFIDENTIAL. This document contains proprietary data of TELEMARK and is not to be copied or distributed without the prior written consent of TELEMARK. The receipt or possession of the document does not convey any rights to reproduce it, disclose its contents, or to manufacture, use or sell anything incorporating the concepts and details disclosed by it. Such concepts and details are not to be used other than for the benefit of TELEMARK and are not to be disclosed to others without the prior written consent of an officer of TELEMARK.



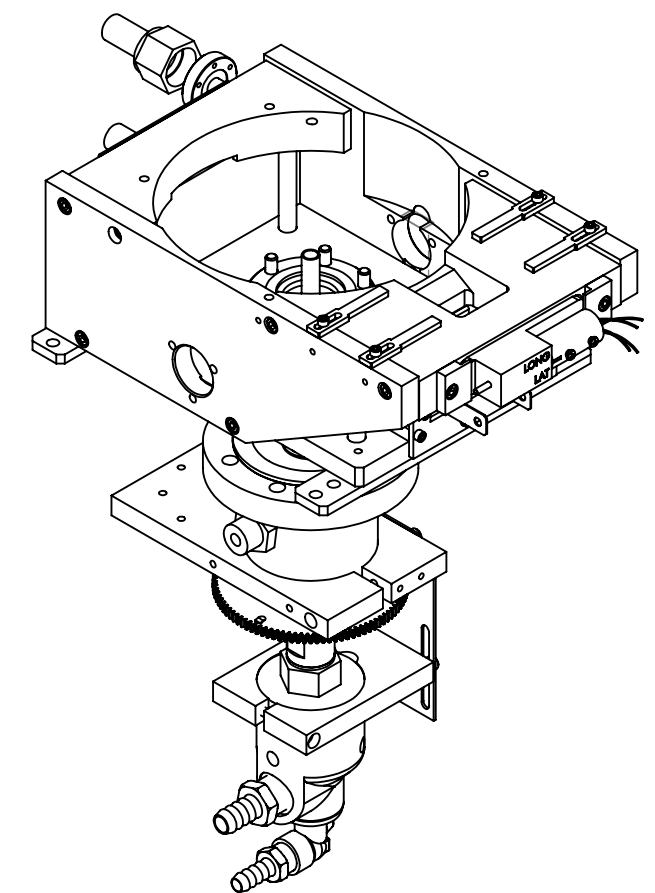


ECN	ZONE	REV	DESCRIPTION	BY	DATE
		A	RELEASE	PWF	5/20/2010
		B	UPDATE SCREW TYPE	PWF	8/29/2011
		C	CHANGE EMITTER TO 273-0150-9	PWF	8/21/2013
990802		D	P/N FROM 271-6197-6 TO 271-6186-6	GPD	12/1/2017
		E	CHANGED EMITTER FROM 273-0150-9 TO 274-0150-3	GPD	2/13/2019

**NOTE:**  
THIS MODEL SOURCE IS BEING SUPPLIED WITH TELEMAR'S NEW ARC SUPPRESSION EMITTER.

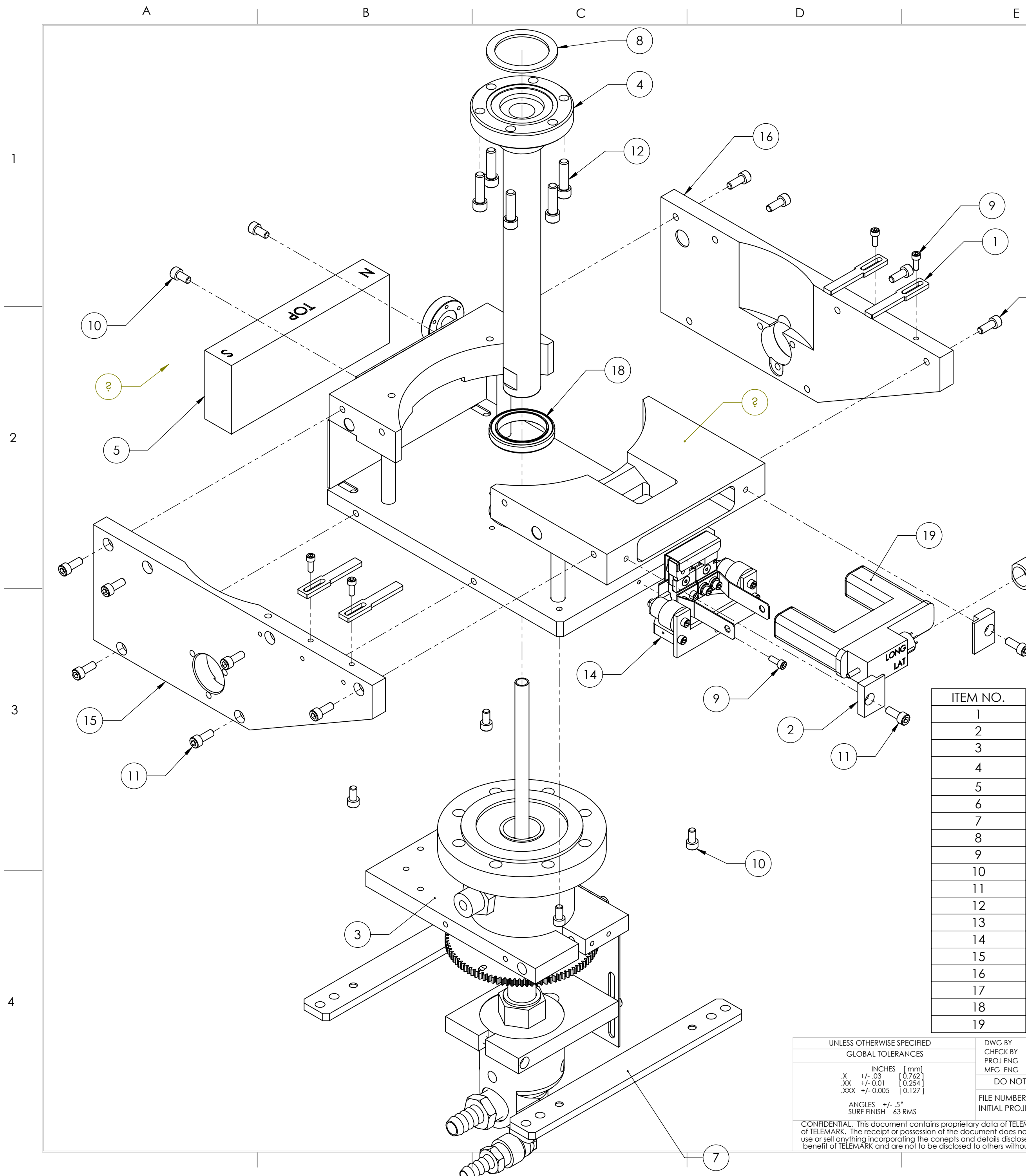
THIS NEW EMITTER IS IDENTIFIED BY:  
A "4" ON THE FRONT SURFACE OF THE MOUNTING BRACKET  
STANDARD EMITTER PART NUMBER 274-0150-1 USES STAINLESS STEEL SCREWS.  
UHV EMITTER PART NUMBER 274-0150-3 USES SILVER-PLATED SCREWS.

THE PRIMARY COMPONENTS IN THIS EMITTER ARE DIFFERENT FROM THOSE IN OUR LEGACY EMITTER AND ARE NOT INTERCHANGEABLE WITH THOSE OF THE LEGACY EMITTER.



ITEM NO.	PART NUMBER	DESCRIPTION	279-0135-1/QTY.
1	263-0053-1	POLE PIECE	4
2	269-1078-1	COIL CLAMP	2
3	269-1140-1	EXTERNAL ASSEMBLY	1
4	269-1443-1 for 279	CRUCIBLE BASE ASSEMBLY	1
5	271-0055-1	PERMANENT MAGNET	1
6	271-0083-1	REAR SHIELD	1
7	271-0088-1	MOUNTING STRAP	2
8	271-0650-3	WATER FITTING F NUT, VCR, 3/8"/1/2"	2
9	271-0651-7	WATER FITTING, GLAND, VCR HF 3/8"	2
10	271-3501-1	GASKET, VCR 3/8"	2
11	271-3601-1	GASKET, CFF 2.75"	1
12	271-6050-6	VENTED SCREW, #6-32 X 3/8" SST SHCS, SILVER	5
13	271-6145-6	VENTED SCREW, #10-32 X 3/8" SST SHCS, SILVER	6
14	271-6150-6	VENTED SCREW, #10-32 X 1/2" SST SHCS, SILVER	14
15	271-6186-6	VENTED SCREW, 1/4-20 X 7/8" SST SHCS, SILVER	6
16	272-0125-2	COIL CONNECTOR ASSEMBLY	1
17	274-0150-3	EMITTER ASSEMBLY	1
18	274-0058-1	MAGNET ARM, LEFT	1
19	274-0059-1	MAGNET ARM, RIGHT	1
20	279-0112-3	BASE PLATE ASSEMBLY, 1.33 CF	1
21	281-0035-1	BEARING, 1-1/8	1
22	282-0080-1	COIL ASSEMBLY	1

UNLESS OTHERWISE SPECIFIED GLOBAL TOLERANCES		DWG BY CHECK BY PROJ ENG MFG ENG	DATE DATE DATE DATE	MATERIAL:	<b>TELEMAR</b> telemark.com
X    INCHES    [mm] XX   +/- .03    [0.762] .XX   +/- .01    [0.254] .XXX   +/- .005    [0.127]  ANGLES   +/- .5° SURF FINISH   63 RMS		DO NOT SCALE DRAWING		FINISH:	
CONFIDENTIAL. This document contains proprietary data of TELEMAR and is not to be copied or distributed without the prior written consent of TELEMAR. The receipt or possession of the document does not convey any rights to reproduce it, disclose its contents, or to manufacture, use or sell anything incorporating the concepts and details disclosed by it. Such concepts and details are not to be used other than for the benefit of TELEMAR and are not to be disclosed to others without the prior written consent of an officer of TELEMAR.		FILE NUMBER    - R279-0001 INITIAL PROJECT    -		THIRD ANGLE PROJECTION	<b>279 EB SOURCE SUB ASSEMBLY, VCR</b>
C		SCALE    1:2 SHEET    1 of 1		DWG NO. <b>279-0135-1</b>	REV <b>E</b>

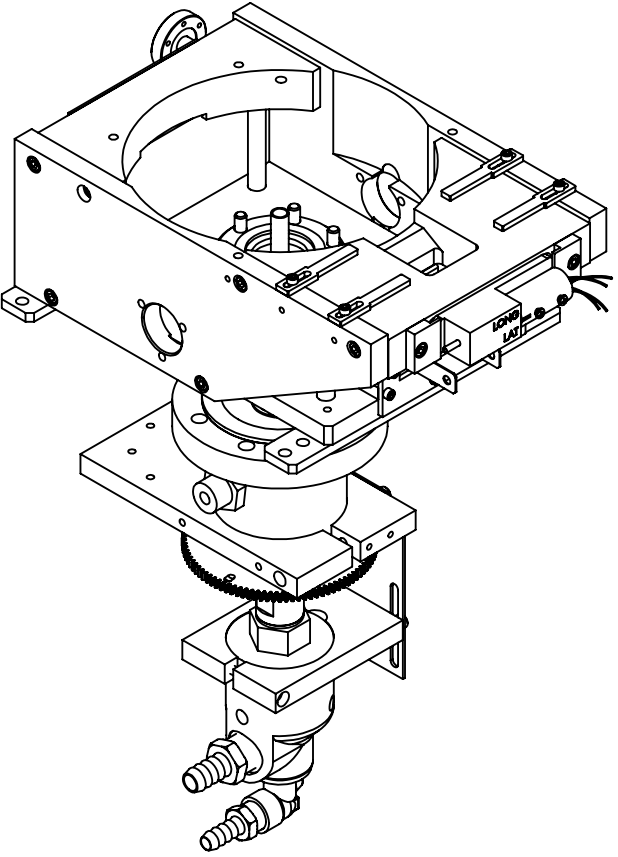


ECN	ZONE	REV	DESCRIPTION	BY	DATE
		A	RELEASE	PWF	5/20/2010
		B	UPDATE SCREW TYPE	PWF	8/29/2011
		C	CHANGE EMITTER TO 273-0150-9	PWF	8/21/2013
		D	CHANGED EMITTER FROM 273-0150-9 TO 274-0150-3	GPD	2/13/2019

**NOTE:**  
THIS MODEL SOURCE IS BEING SUPPLIED WITH TELEMAR'S NEW ARC SUPPRESSION EMITTER.

THIS NEW EMITTER IS IDENTIFIED BY:  
A "4" ON THE FRONT SURFACE OF THE MOUNTING BRACKET  
STANDARD EMITTER PART NUMBER 274-0150-1 USES STAINLESS  
STEEL SCREWS.  
UHV EMITTER PART NUMBER 274-0150-3 USES SILVER-PLATED  
SCREWS.

THE PRIMARY COMPONENTS IN THIS EMITTER ARE DIFFERENT  
FROM THOSE IN OUR LEGACY EMITTER AND ARE NOT  
INTERCHANGEABLE WITH THOSE OF THE LEGACY EMITTER.



ITEM NO.	PART NUMBER	DESCRIPTION	279-0135-2/QTY.
1	263-0053-1	POLE PIECE	4
2	269-1078-1	COIL CLAMP	2
3	269-1140-1	EXTERNAL ASSEMBLY	1
4	269-1443-1 for 279	CRUCIBLE BASE ASSEMBLY	1
5	271-0055-1	PERMANENT MAGNET	1
6	271-0083-1	REAR SHIELD	1
7	271-0088-1	MOUNTING STRAP	2
8	271-3601-1	GASKET, CFF 2.75"	1
9	271-6050-6	VENTED SCREW, #6-32 X 3/8" SST SHCS, SILVER	5
10	271-6145-6	VENTED SCREW, #10-32 X3/8" SST SHCS, SILVER	6
11	271-6150-6	VENTED SCREW, #10-32 X 1/2" SST SHCS, SILVER	14
12	271-6186-6	VENTED SCREW, 1/4-20 X 7/8" SST SHCS, SILVER	6
13	272-0125-2	COIL CONNECTOR ASSEMBLY	1
14	274-0150-3	EMITTER ASSEMBLY	1
15	274-0058-1	MAGNET ARM, LEFT	1
16	274-0059-1	MAGNET ARM, RIGHT	1
17	279-0112-3	BASE PLATE ASSEMBLY, 1.33 CF	1
18	281-0035-1	BEARING, 1-1/8	1
19	282-0080-1	COIL ASSEMBLY	1

UNLESS OTHERWISE SPECIFIED  
GLOBAL TOLERANCES

X	INCHES	[mm]
XX	+/- .03	[0.762]
XXX	+/- 0.01	[0.254]
	+/- 0.005	[0.127]

ANGLES +/- .5°  
SURF FINISH .63 RMS

DWG BY  
CHECK BY  
PROJ ENG  
MFG ENG

DATE  
DATE  
DATE  
DATE

DO NOT SCALE DRAWING

FILE NUMBER - R279-0001  
INITIAL PROJECT -

MATERIAL:

FINISH:

THIRD ANGLE PROJECTION

**TELEMAR**  
telemark.com

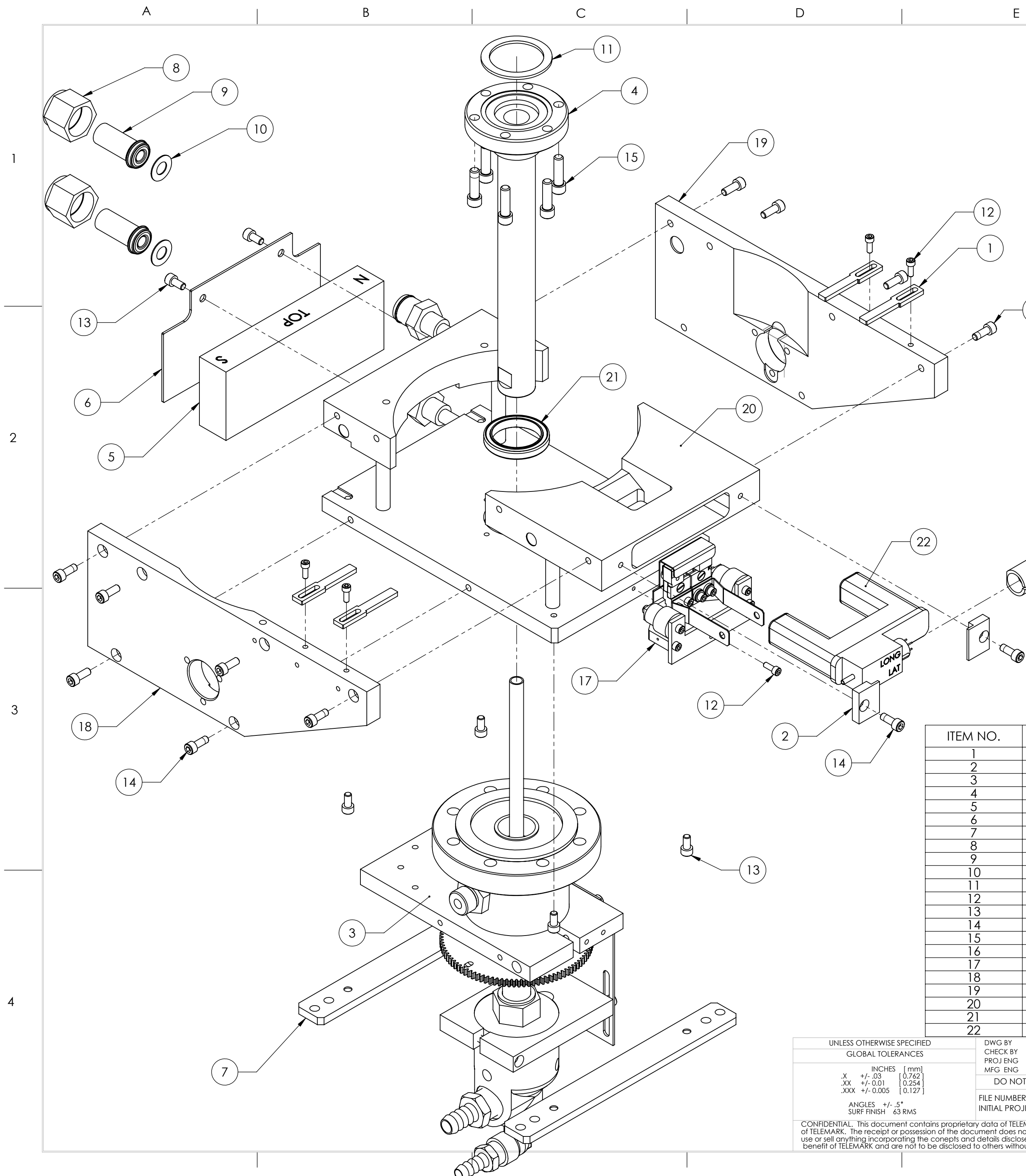
**279 EB SOURCE  
SUB ASSEMBLY, 1.33 CF**

SCALE 1:2  
SHEET 1 of 1

DWG NO. 279-0135-2  
REV D

CONFIDENTIAL. This document contains proprietary data of TELEMAR and is not to be copied or distributed without the prior written consent of TELEMAR. The receipt or possession of the document does not convey any rights to reproduce it, disclose its contents, or to manufacture, use or sell anything incorporating the concepts and details disclosed by it. Such concepts and details are not to be used other than for the benefit of TELEMAR and are not to be disclosed to others without the prior written consent of an officer of TELEMAR.



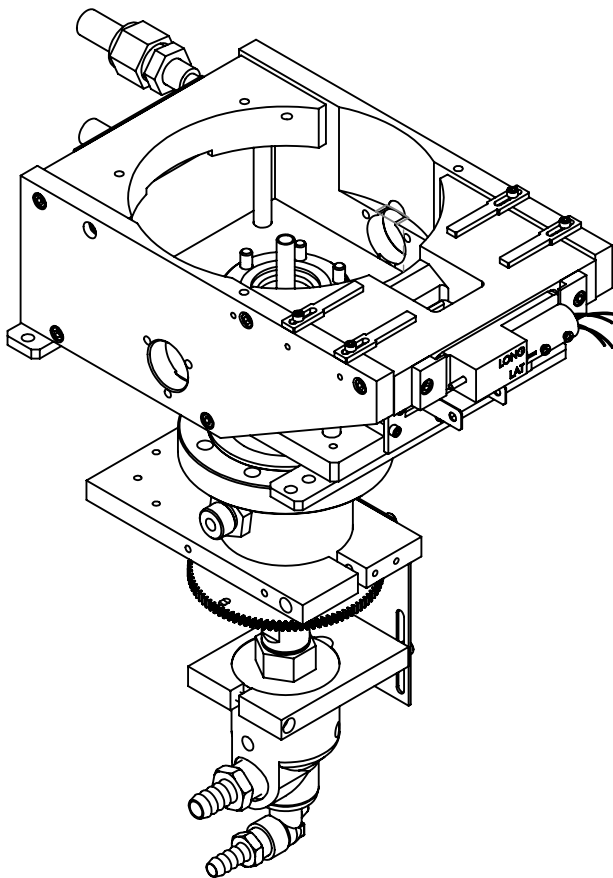


ECN	ZONE	REV	DESCRIPTION	BY	DATE
		A	RELEASE	GPD	6/29/2022

**NOTE:**  
THIS MODEL SOURCE IS BEING SUPPLIED WITH TELEMAR'S NEW ARC SUPPRESSION EMITTER.

THIS NEW EMITTER IS IDENTIFIED BY:  
A "4" ON THE FRONT SURFACE OF THE MOUNTING BRACKET  
STANDARD EMITTER PART NUMBER 274-0150-1 USES STAINLESS STEEL SCREWS.  
UHV EMITTER PART NUMBER 274-0150-3 USES SILVER-PLATED SCREWS.

THE PRIMARY COMPONENTS IN THIS EMITTER ARE DIFFERENT FROM THOSE IN OUR LEGACY EMITTER AND ARE NOT INTERCHANGEABLE WITH THOSE OF THE LEGACY EMITTER.



ITEM NO.	PART NUMBER	DESCRIPTION	QTY.
1	263-0053-1	POLE PIECE	4
2	269-1078-1	COIL CLAMP	2
3	269-1140-3	EXTERNAL ASSEMBLY, 8 PKT	1
4	269-1443-1	CRUCIBLE BASE ASSEMBLY	1
5	271-0055-1	PERMANENT MAGNET	1
6	271-0083-1	REAR SHIELD	1
7	271-0088-1	MOUNTING STRAP	2
8	271-0650-3	WATER FITTING F NUT, VCR, 3/8"/1/2"	2
9	271-0651-7	WATER FITTING, GLAND, VCR HF 3/8"	2
10	271-3501-1	GASKET, VCR 3/8"	2
11	271-3601-1	GASKET, CFF 2.75"	1
12	271-6050-6	VENTED SCREW, #6-32 X 3/8" SST SHCS, SILVER	5
13	271-6145-6	VENTED SCREW, #10-32 X 3/8" SST SHCS, SILVER	6
14	271-6150-6	VENTED SCREW, #10-32 X 1/2" SST SHCS, SILVER	14
15	271-6186-6	VENTED SCREW, 1/4-20 X 7/8" SST SHCS, SILVER	6
16	272-0125-2	COIL CONNECTOR ASSEMBLY	1
17	274-0150-3	EMITTER ASSEMBLY	1
18	274-0058-1	MAGNET ARM, LEFT	1
19	274-0059-1	MAGNET ARM, RIGHT	1
20	279-0112-2	BASE PLATE ASSEMBLY, VCR	1
21	281-0035-1	BEARING, 1-1/8	1
22	282-0080-1	COIL ASSEMBLY	1

UNLESS OTHERWISE SPECIFIED  
GLOBAL TOLERANCES

INCHES [mm]

X +/- .03 [0.762]

.XX +/- .01 [0.254]

.XXX +/- .005 [0.127]

ANGLES +/- .5°

SURF FINISH .63 RMS

DWG BY  
CHECK BY  
PROJ ENG  
MFG ENG

DATE  
DATE  
DATE  
DATE

DO NOT SCALE DRAWING

FILE NUMBER - R279-0001  
INITIAL PROJECT -

MATERIAL:

FINISH:

THIRD ANGLE PROJECTION

CONFIDENTIAL. This document contains proprietary data of TELEMAR and is not to be copied or distributed without the prior written consent of TELEMAR. The receipt or possession of the document does not convey any rights to reproduce it, disclose its contents, or to manufacture, use or sell anything incorporating the concepts and details disclosed by it. Such concepts and details are not to be used other than for the benefit of TELEMAR and are not to be disclosed to others without the prior written consent of an officer of TELEMAR.

**TELEMAR**

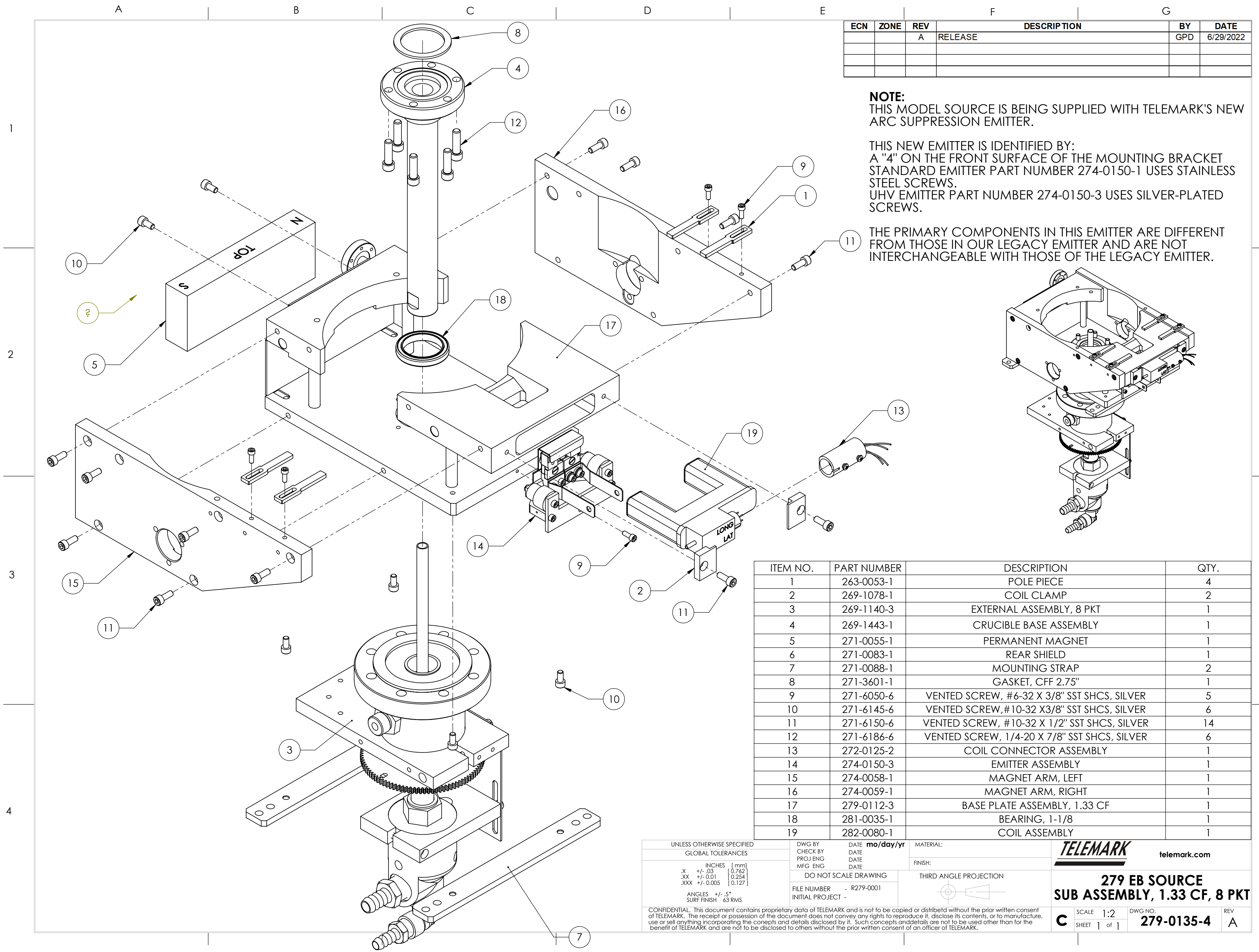
telemar.com

279 EB SOURCE  
SUB ASSEMBLY, VCR, 8 PKT

SCALE 1:2  
SHEET 1 of 1

DWG NO.  
279-0135-3

REV  
A



ECN	ZONE	REV	DESCRIPTION	BY	DATE
		A	RELEASE	GPD	6/29/2022

**NOTE:**  
THIS MODEL SOURCE IS BEING SUPPLIED WITH TELEMAR'S NEW ARC SUPPRESSION EMITTER.

THIS NEW EMITTER IS IDENTIFIED BY:  
A "4" ON THE FRONT SURFACE OF THE MOUNTING BRACKET  
STANDARD EMITTER PART NUMBER 274-0150-1 USES STAINLESS  
STEEL SCREWS.  
UHV EMITTER PART NUMBER 274-0150-3 USES SILVER-PLATED  
SCREWS.

THE PRIMARY COMPONENTS IN THIS EMITTER ARE DIFFERENT  
FROM THOSE IN OUR LEGACY EMITTER AND ARE NOT  
INTERCHANGEABLE WITH THOSE OF THE LEGACY EMITTER.

ITEM NO.	PART NUMBER	DESCRIPTION	QTY.
1	263-0053-1	POLE PIECE	4
2	269-1078-1	COIL CLAMP	2
3	269-1140-3	EXTERNAL ASSEMBLY, 8 PKT	1
4	269-1443-1	CRUCIBLE BASE ASSEMBLY	1
5	271-0055-1	PERMANENT MAGNET	1
6	271-0083-1	REAR SHIELD	1
7	271-0088-1	MOUNTING STRAP	2
8	271-3601-1	GASKET, CFF 2.75"	1
9	271-6050-6	VENTED SCREW, #6-32 X 3/8" SST SHCS, SILVER	5
10	271-6145-6	VENTED SCREW, #10-32 X3/8" SST SHCS, SILVER	6
11	271-6150-6	VENTED SCREW, #10-32 X 1/2" SST SHCS, SILVER	14
12	271-6186-6	VENTED SCREW, 1/4-20 X 7/8" SST SHCS, SILVER	6
13	272-0125-2	COIL CONNECTOR ASSEMBLY	1
14	274-0150-3	EMITTER ASSEMBLY	1
15	274-0058-1	MAGNET ARM, LEFT	1
16	274-0059-1	MAGNET ARM, RIGHT	1
17	279-0112-3	BASE PLATE ASSEMBLY, 1.33 CF	1
18	281-0035-1	BEARING, 1-1/8	1
19	282-0080-1	COIL ASSEMBLY	1

UNLESS OTHERWISE SPECIFIED  
GLOBAL TOLERANCES

X	±.03	[0.762]
.XX	±.01	[0.254]
.XXX	±.005	[0.127]

ANGLES ±.5°  
SURF FINISH .63 RMS

DWG BY  
CHECK BY  
PROJ ENG  
MFG ENG

DATE  
DATE  
DATE  
DATE

DO NOT SCALE DRAWING

FILE NUMBER - R279-0001  
INITIAL PROJECT -

MATERIAL:

FINISH:

THIRD ANGLE PROJECTION

**TELEMAR**  
telemark.com

**279 EB SOURCE  
SUB ASSEMBLY, 1.33 CF, 8 PKT**

SCALE 1:2  
SHEET 1 of 1

DWG NO. **279-0135-4**

REV **A**

CONFIDENTIAL. This document contains proprietary data of TELEMAR and is not to be copied or distributed without the prior written consent of TELEMAR. The receipt or possession of the document does not convey any rights to reproduce it, disclose its contents, or to manufacture, use or sell anything incorporating the concepts and details disclosed by it. Such concepts and details are not to be used other than for the benefit of TELEMAR and are not to be disclosed to others without the prior written consent of an officer of TELEMAR.