

TELEMARK 296 Multi Pocket E-Beam Source Drawings

The current version of this drawing pdf can be found at

<https://telemark.com/electron-beam-sources/multi-pocket-sources/>

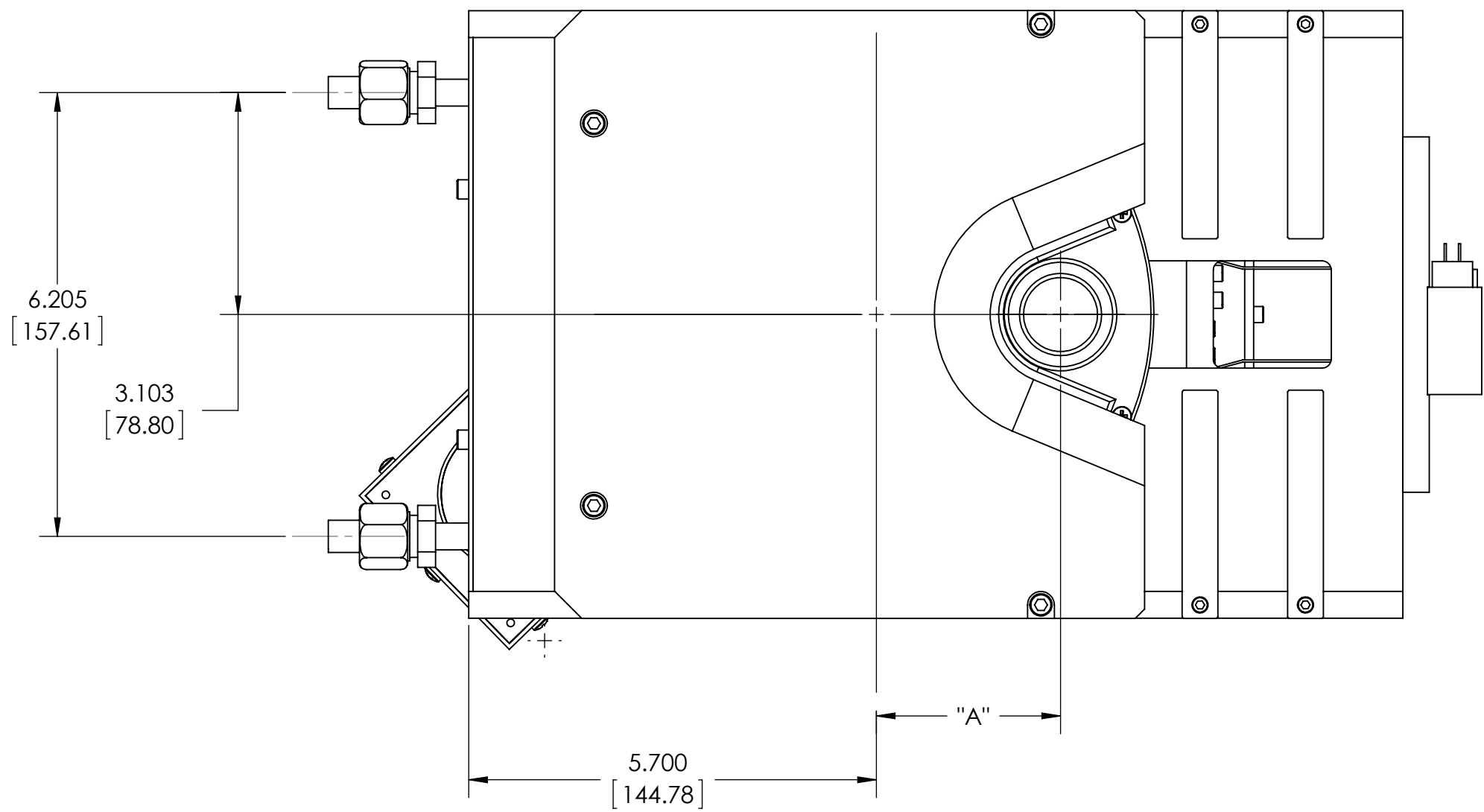
Drawing	Rev.	Description	Page
Reference Dimensions			2
R296-0001	A1	Model 296 E-Beam Source Dimensions	3
Common Assemblies			4
274-0150-1	F	Emitter Assembly	5
296-1135-1	E	296 EB Source Sub Assembly	6
296-1135-2	B	296 EB Source Sub Assembly, AS	7
296-1135-1	A	296 EB Source Sub Assembly, 8 pocket	8
297-0140-2	A	External Assembly	9
297-0140-3	A	External Assembly, 8 pocket	10
Option - Self Sealing Cover			11
296-9902-1SSC	A	Model 296-02 EB Source, 8 pkt, 15cc, SSC	12
Option - Arc Suppression			13
291-3151-3	A	Arc Supression Emitter	14
296-5175-1	A	296 Arc Supression	15



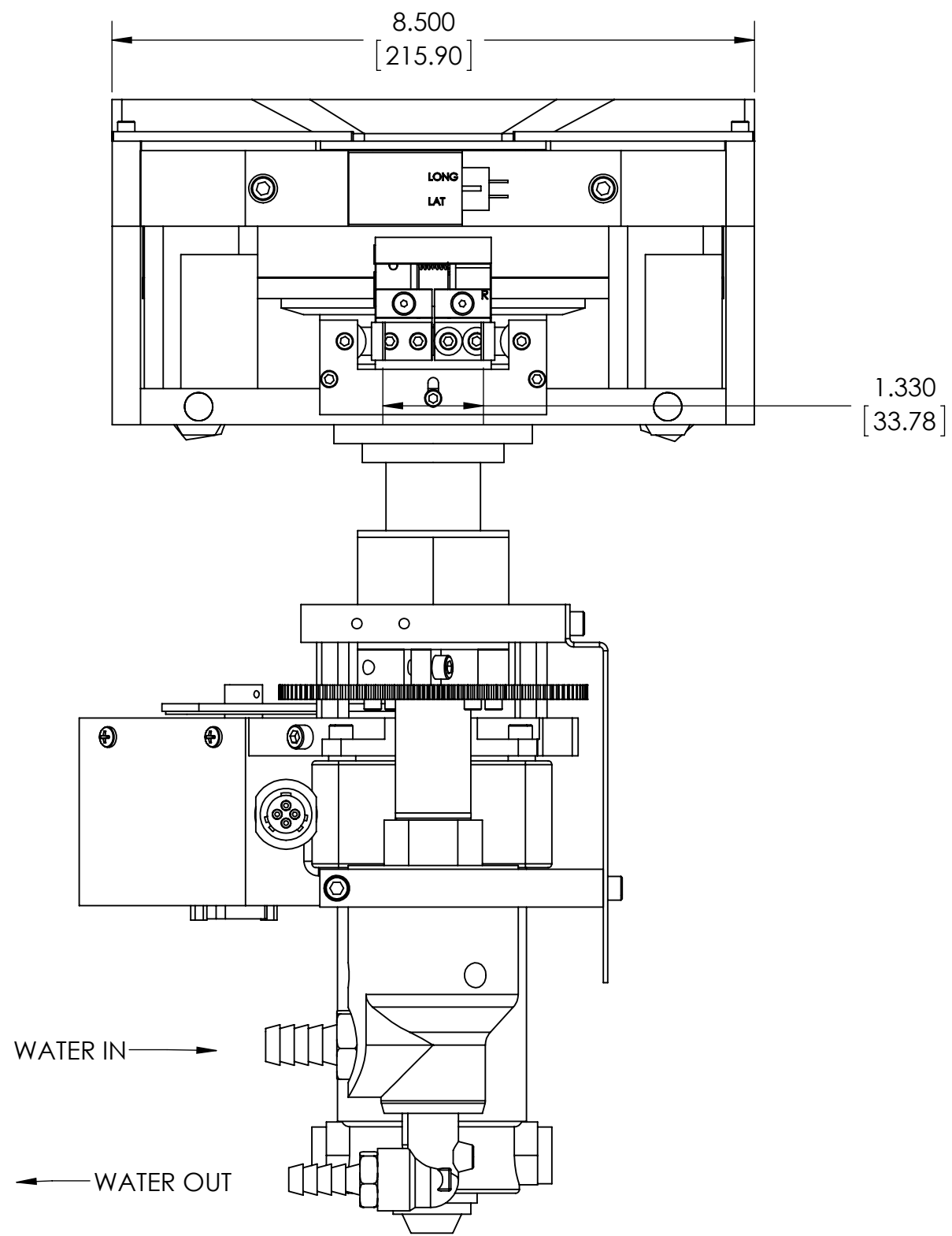
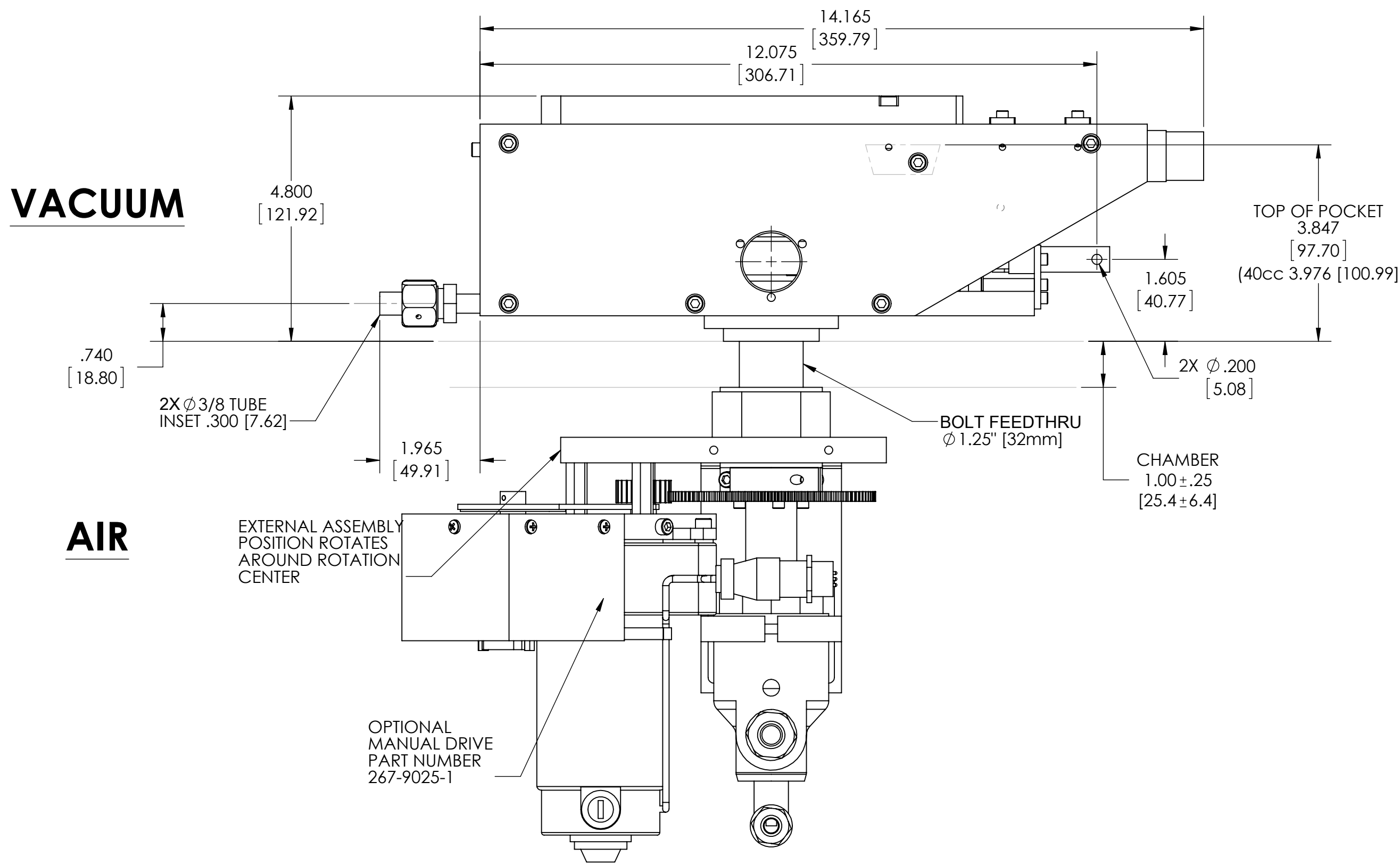
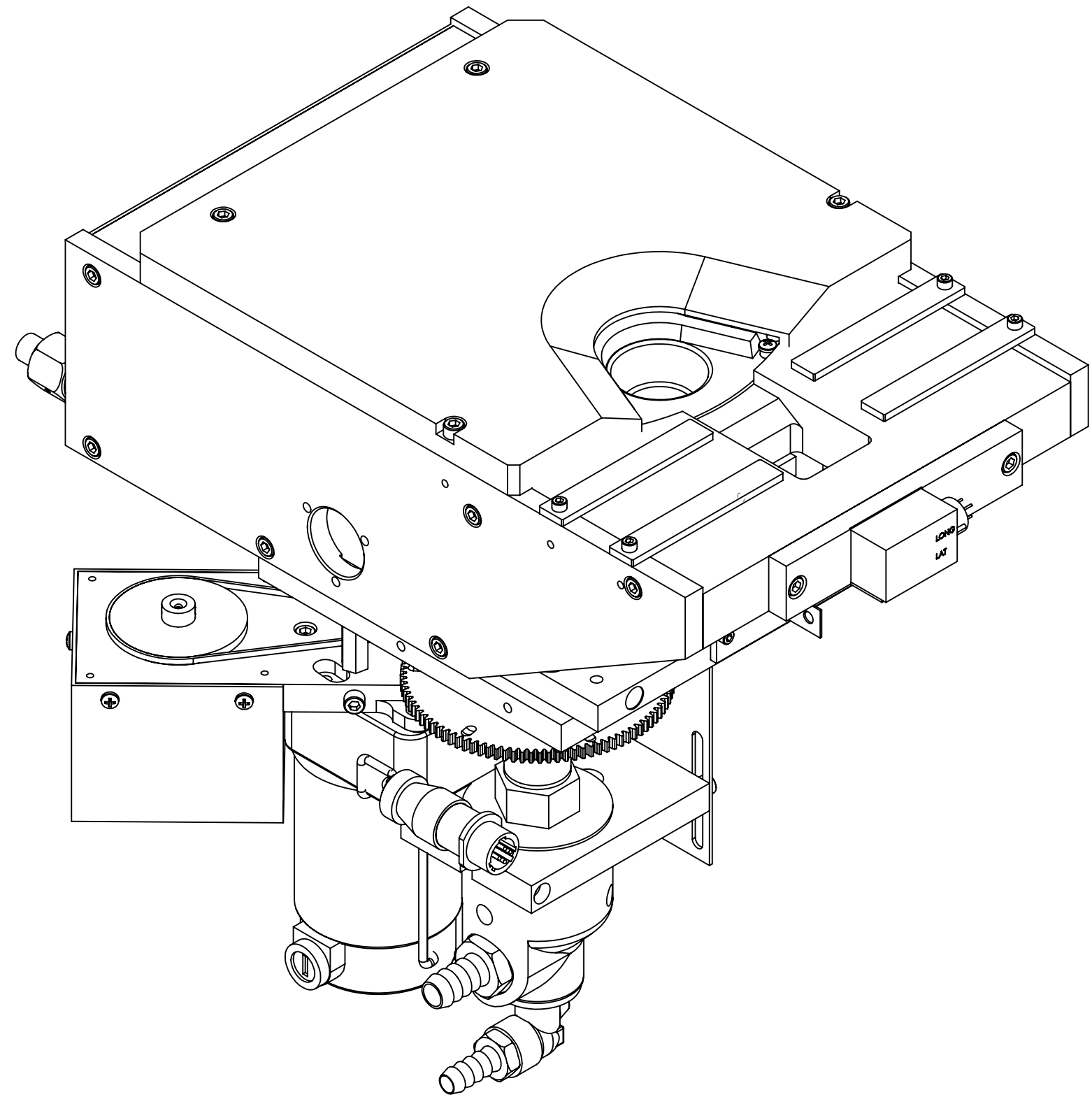
Reference Dimensions

E-Beam Source

ECN	ZONE	REV	DESCRIPTION	BY	DATE
		A	RELEASE	PWF	1/14/2013
		A1	UPDATE	PWF	12/22/2013



# OF POCKETS	"A"
4/6/8	2.575 [65.41]
8 (25cc)	2.675 [67.95]

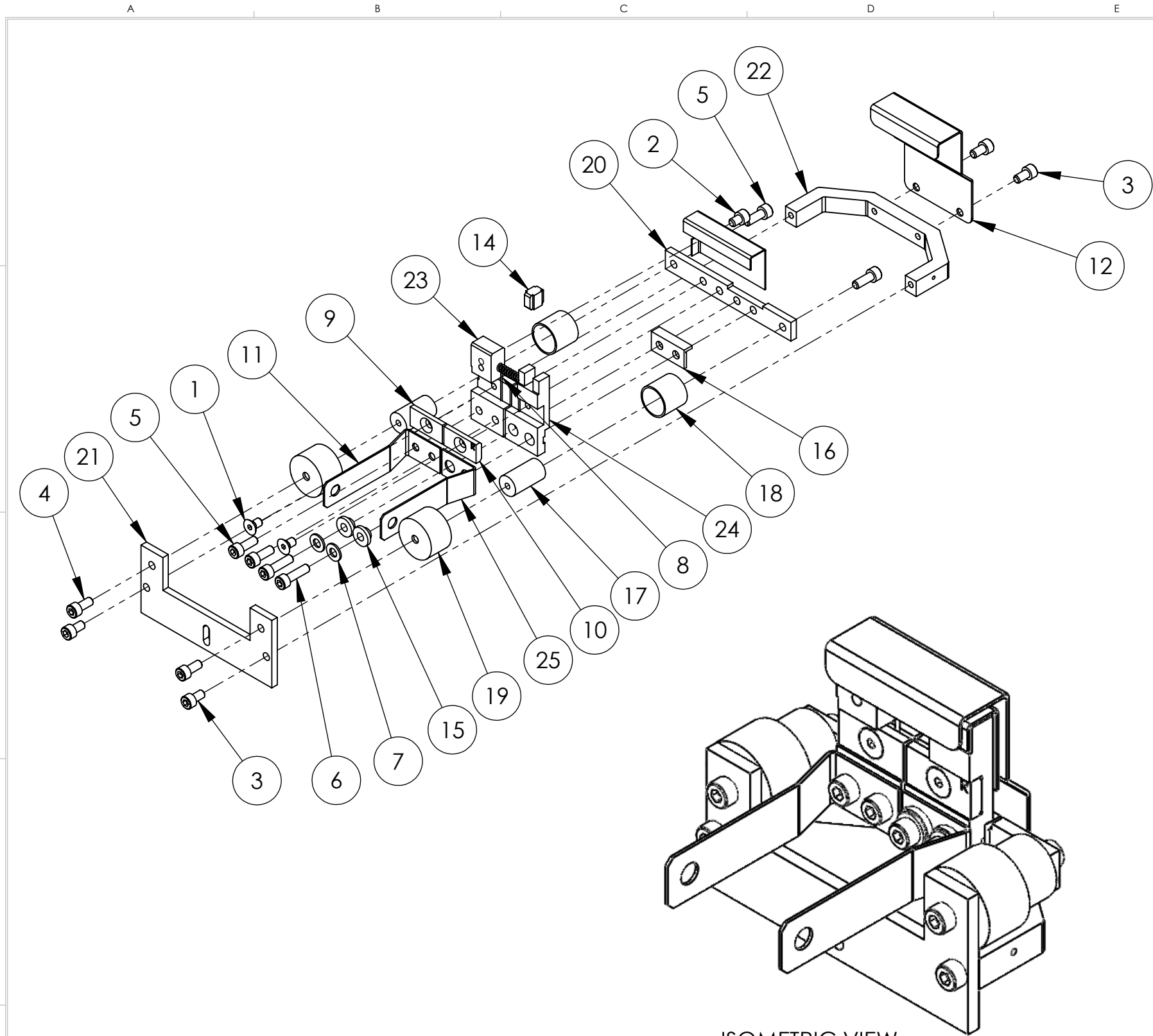


UNLESS OTHERWISE SPECIFIED GLOBAL TOLERANCES		DWG BY CHECK BY PROJ ENG MFG ENG	DATE DATE DATE	MATERIAL:	<div><div>TELEMARK</div><div>telemark.com</div></div>
INCHES [mm] .X +/- .03 [0.762] .XX +/- .001 [0.254] .XXX +/- .0005 [0.127]		DO NOT SCALE DRAWING		FINISH:	
ANGLES +/- .5° SURF FINISH 63 RMS		FILE NUMBER INITIAL PROJECT		THIRD ANGLE PROJECTION	
		-294-99xx-2			
<div><div>CONFIDENTIAL. This document contains proprietary data of TELEMARK and is not to be copied or distributed without the prior written consent of TELEMARK. This receipt or possession of this document does not convey any rights to reproduce it, disclose its contents, or to manufacture, use or sell anything incorporating the concepts and details disclosed by it. Such concepts and details are not to be used other than for the benefit of TELEMARK and are not to be disclosed to others without the prior written consent of an officer of TELEMARK.</div></div>					
D		1:2		DWG NO.	REV
SHEET		1 of 1		R296-0001	A1



Common Assemblies

E-Beam Source



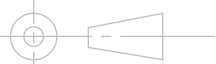
ISOMETRIC VIEW

UNLESS OTHERWISE SPECIFIED			
GLOBAL TOLERANCES			
	INCHES	[mm]	
.X	+/- .03	[0.762]	
.XX	+/- 0.01	[0.254]	
.XXX	+/- 0.005	[0.127]	
ANGLES +/- .5°			
SURF FINISH 63 RMS			

CONFIDENTIAL. This document contains proprietary data of TELEMAR and is not to be copied or distributed without the prior written consent of TELEMAR. The receipt or possession of the document does not convey any rights to reproduce it, disclose its contents, or to manufacture, use or sell anything incorporating the concepts and details disclosed by it. Such concepts and details are not to be used other than for the benefit of TELEMAR and are not to be disclosed to others without the prior written consent of an officer of TELEMAR.

DWG BY G. DION	DATE 7-21-2015
CHECK BY	DATE
PROJ ENG	DATE
MFG ENG	DATE
DO NOT SCALE DRAWING	
FILE NUMBER	- 274-0150-1
INITIAL PROJECT	-

MATERIAL:	SEE PARTS LIST
FINISH:	SEE NOTES
THIRD ANGLE PROJECTION	



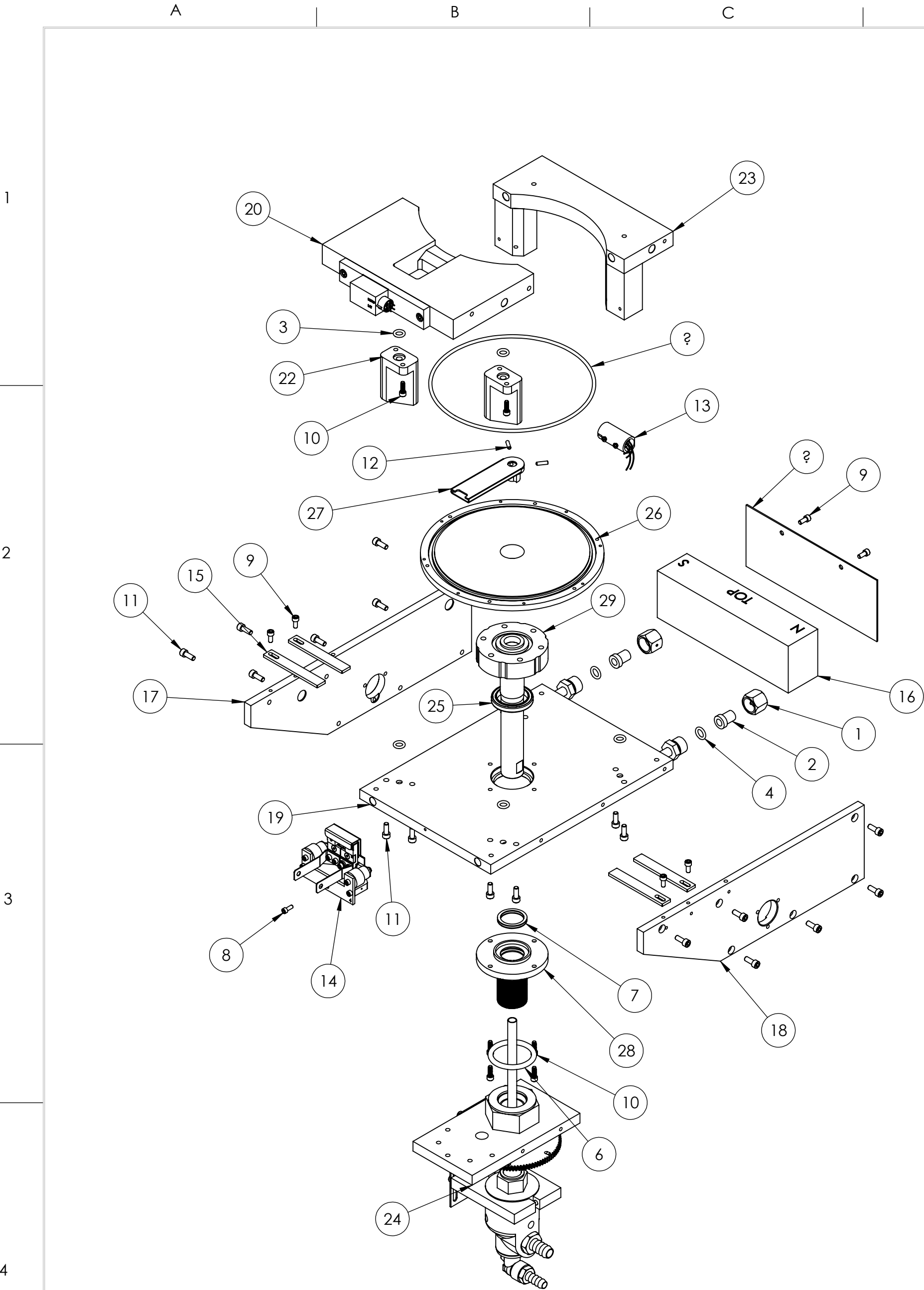
ECN	ZONE	REV	DESCRIPTION	BY	DATE
		A	RELEASE	GPD	7/21/2015
		B	ADDING LARGER INSULATOR SHIELD	GPD	7/21/2016
		C	ITEM 17 FROM 273-0018-7 TO 273-0018-8	GPD	8/2/2016
		D	P/N FROM 273-0017-1 TO 273-0017-2 & 273-0018-8 TO 273-0018-2	GPD	2/21/2017
		E	REVISED PARTS	GPD	10/2/2017
990811		F	P/N FROM 271-6050-1 TO 271-6040-1, 2 PLACES	GPD	2/1/2018

ITEM NO.	PART NUMBER	DESCRIPTION	QTY.
1	271-6010-5	SCREW, #6-32 X 1/4" SLOT FLAT HEAD, Ti	2
2	271-6020-5	SCREW, #6-32 X 3/16" TI SHCS	1
3	271-6030-1	VENTED SCREW, #6-32 UNC X 1/4" SST SHCS	4
4	271-6040-1	VENTED SCREW, #6-32 X 5/16 SST SHCS	2
5	271-6050-1	VENTED SCREW, #6-32 UNC X 3/8" SHCS	4
6	271-6060-1	VENTED SCREW, #6-32 X 1/2" SST SHCS	2
7	271-6242-1	FLAT WASHER, #6 SST	2
8	273-0001-1	FILAMENT, 7-1/2 TURN	1
9	273-0033-3	FILAMENT CLAMP, LEFT	1
10	273-0033-4	FILAMENT CLAMP, RIGHT	1
11	273-0035-1	EMITTER BUS BAR, LEFT	1
12	274-0003-7	ANODE	1
13	274-0004-7	BEAM FORMER	1
14	274-0005-1	INSULATOR, CROSS	1
15	274-0006-1	INSULATOR, COLLAR	2
16	274-0008-1	INSULATOR, L	1
17	274-0010-1	INSULATOR, HV	2
18	274-0011-1	HV SHIELD	2
19	274-0011-2	HV SHIELD	2
20	274-0017-2	MOUNTING BRACKET	1
21	274-0018-2	EMITTER SUPPORT BRACKET	1
22	274-0019-7	U-BRACKET	1
23	274-0031-1	CATHODE BLOCK, LEFT	1
24	274-0032-1	CATHODE BLOCK, RIGHT	1
25	274-0036-1	EMITTER BUSS BAR, RIGHT	1

TELEMAR Battle Ground, WA

EMITTER ASSEMBLY


B	SCALE	1:1	DWG NO. 274-0150-1	REV F
	SHEET	1 of 1		

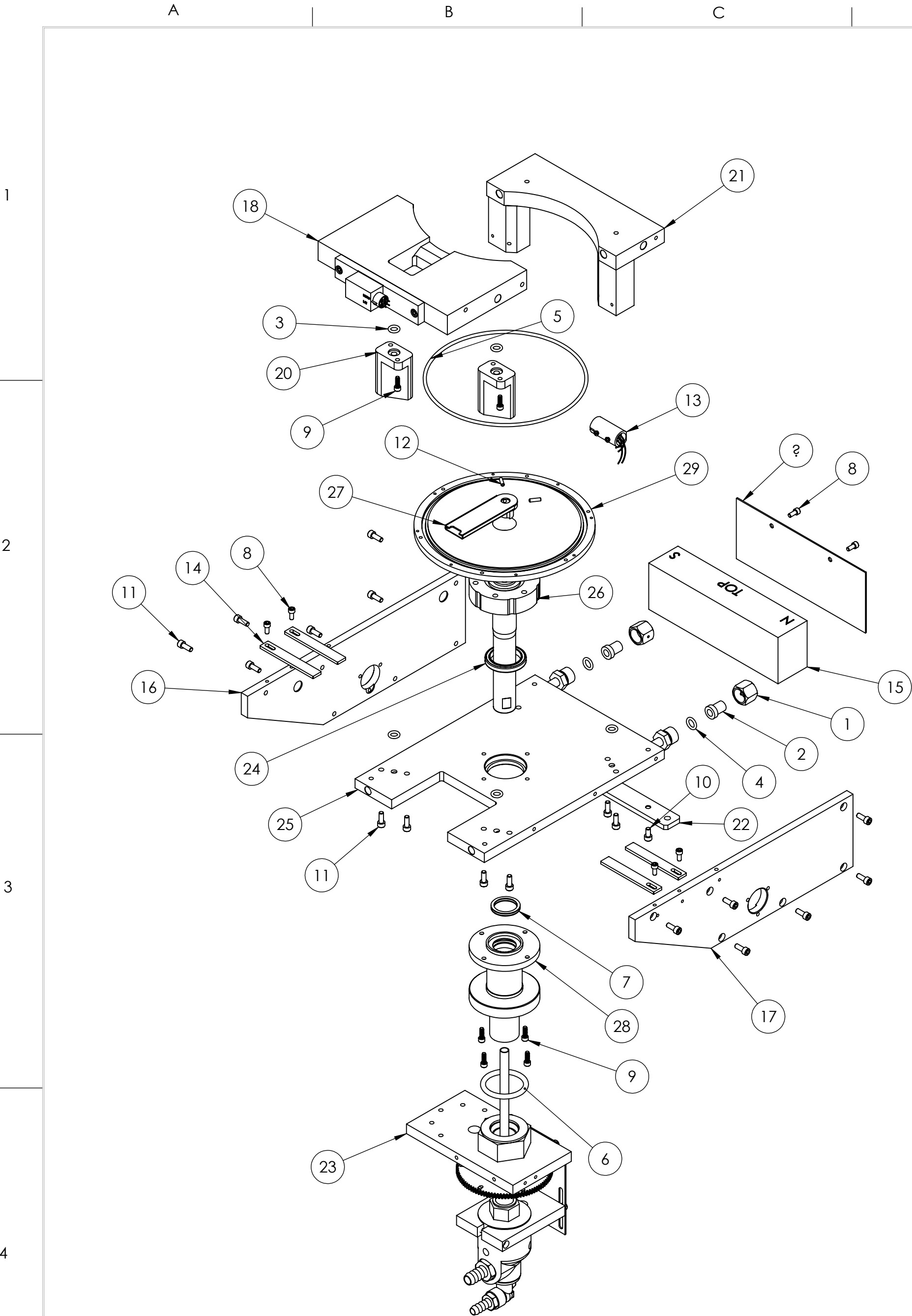


ECN	ZONE	REV	DESCRIPTION	BY	DATE
		A	RELEASE	GPD	7/24/2015
		B	REMOVED MOUNTING STRAP	GPD	9/15/2015
		C	CHANGED EMITTER FROM 273-0150-8 TO 274-0150-3	GPD	2/13/2019
		D	P/N FROM 297-0471-5 TO 297-0471-1	GPD	3/7/2019
990887		E	CHANGED EMITTER FROM 274-0150-3 TO 274-0150-1	PWF	4/6/2020

NOTE:
THIS MODEL SOURCE IS BEING SUPPLIED WITH TELEMAR'S NEW ARC SUPPRESSION EMITTER.
THIS NEW EMITTER IS IDENTIFIED BY:
A "4" ON THE FRONT SURFACE OF THE MOUNTING BRACKET
STANDARD EMITTER PART NUMBER 274-0150-1 USES STAINLESS STEEL SCREWS.
UHV EMITTER PART NUMBER 274-0150-3 USES SILVER-PLATED SCREWS.
THE PRIMARY COMPONENTS IN THIS EMITTER ARE DIFFERENT FROM THOSE IN OUR LEGACY EMITTER AND ARE NOT INTERCHANGEABLE WITH THOSE OF THE LEGACY EMITTER.

ITEM NO.	PART NUMBER	DESCRIPTION	QTY.
1	271-0650-2	WATER FITTING NUT	2
2	271-0651-2	WATER FITTING GLAND	2
3	271-2109-1	O-RING, VITON, ID 5/16", W 3/32"	6
4	271-2110-1	O-RING, VITON, ID 3/8", W 3/32"	2
5	271-2261-1	O-RING, VITON, ID 6-3/4", W 1/8"	1
6	271-2326-1	O-RING, VITON, ID 1-5/8", W 3/16"	1
7	271-4214-1	QUAD RING, VITON, ID 1", W 1/8"	1
8	271-6050-1	VENTED SCREW, #6-32 UNC X 3/8" SHCS	1
9	271-6125-1	VENTED SCREW, #8-32 UNC X 3/8" LG, SST, SHCS	6
10	271-6128-1	VENTED SCREW, #8-32 X 1/2" SST SHCS	8
11	271-6150-1	VENTED SCREW, #10-32 X 1/2" SHCS	20
12	271-6199-2	SET SCREW, #6-32 X 1/2" SST	2
13	272-0125-2	COIL CONNECTOR ASSEMBLY	1
14	274-0150-1	EMITTER ASSEMBLY	1
15	294-0053-2	POLE PIECE	4
16	294-0055-1	PERMANENT MAGNET	1
17	294-0058-2	MAGNET ARM, LEFT	1
18	294-0059-2	MAGNET ARM, RIGHT	1
19	297-0060-1	BASE PLATE, 297	1
20	294-0080-1	FRONT SHIELD ASSEMBLY	1
21	294-0083-1	REAR SHIELD	1
22	294-0085-1	WATER BLOCK	2
23	294-0086-1	SHIELD, REAR HALF	1
24	297-0140-2	EXTERNAL ASSEMBLY	1
25	281-0035-1	BEARING, 1-1/8	1
26	294-0442-2	CRUCIBLE BASE	1
27	297-0452-3	CRUCIBLE WATER DUCT ASSEMBLY, H/F	1
28	297-0471-1	FEEDTHRU, 297	1
29	296-1443-1	CRUCIBLE BASE ASSEMBLY	1

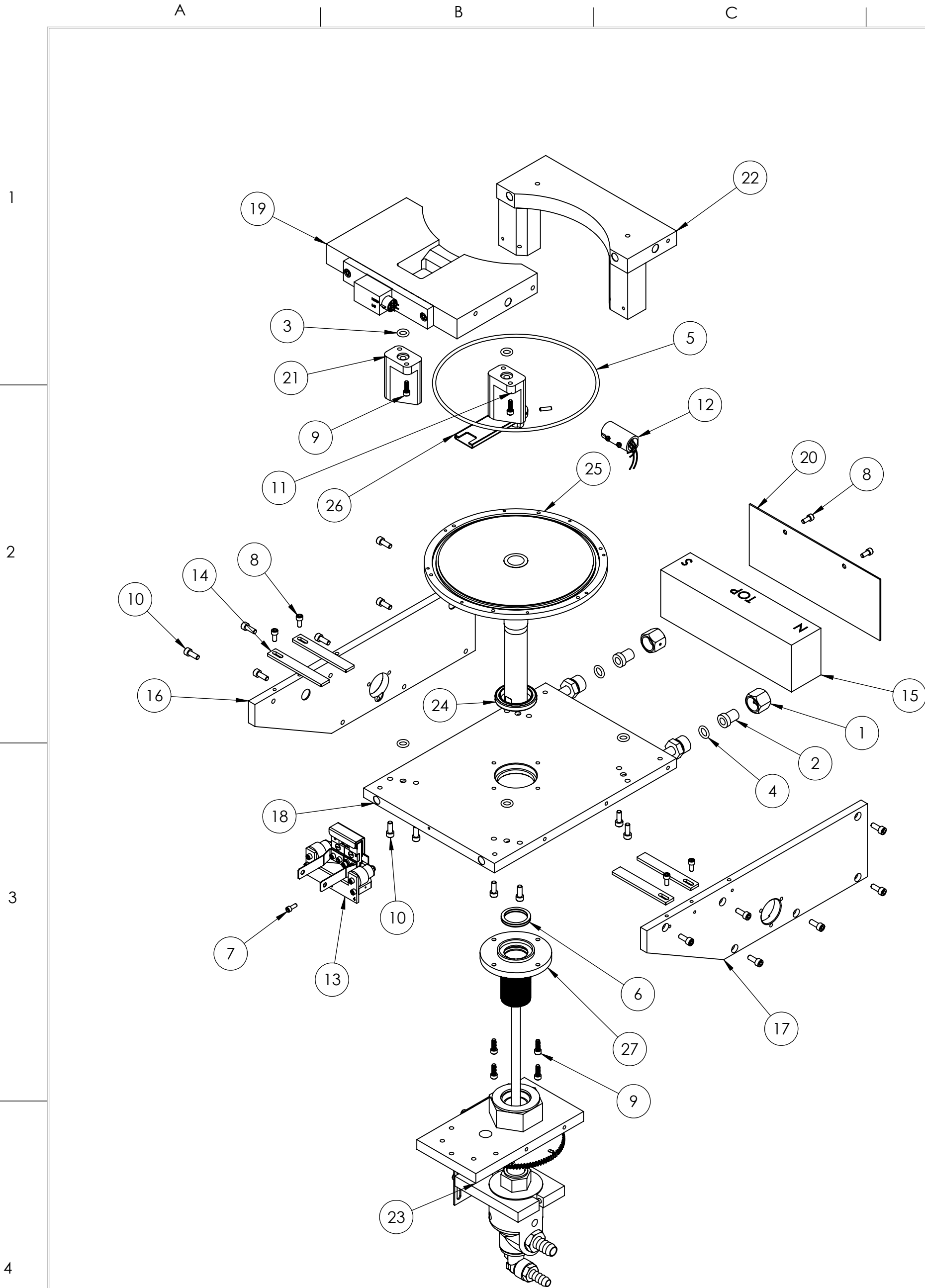
UNLESS OTHERWISE SPECIFIED		DWG BY: G. DION DATE: 7-24-2015		MATERIAL: SEE PARTS LIST		<div>TELEMAR</div>		Battle Ground, WA	
GLOBAL TOLERANCES		CHECK BY: _____ DATE: _____ PROJ ENG: _____ DATE: _____ MFG ENG: _____ DATE: _____		FINISH: _____		<div>296 EB SOURCE SUB ASSEMBLY</div>			
INCHES [mm] X +/- .03 [0.762] .XX +/- .01 [0.254] .XXX +/- .005 [0.127] ANGLES +/- .5° SURF FINISH .63 RMS		DO NOT SCALE DRAWING		THIRD ANGLE PROJECTION					
		FILE NUMBER - 296-1135-1 INITIAL PROJECT - 296							
CONFIDENTIAL. This document contains proprietary data of TELEMAR and is not to be copied or distributed without the prior written consent of TELEMAR. The receipt or possession of the document does not convey any rights to reproduce it, disclose its contents, or to manufacture, use or sell anything incorporating the concepts and details disclosed by it. Such concepts and details are not to be used other than for the benefit of TELEMAR and are not to be disclosed to others without the prior written consent of an officer of TELEMAR.						C	SCALE 1:4 SHEET 1 of 1	DWG NO. 296-1135-1	REV E



ECN	ZONE	REV	DESCRIPTION	BY	DATE
990887		A	RELEASE	GPD	3/30/2015
		B	CHANGE CRUCIBLE BASE	PWF	4/6/2020

ITEM NO.	PART NUMBER	DESCRIPTION	QTY.
1	271-0650-2	WATER FITTING NUT	2
2	271-0651-2	WATER FITTING GLAND	2
3	271-2109-1	O-RING, VITON, ID 5/16", W 3/32"	6
4	271-2110-1	O-RING, VITON, ID 3/8", W 3/32"	2
5	271-2261-1	O-RING, VITON, ID 6-3/4", W 1/8"	1
6	271-2326-1	O-RING, VITON, ID 1-5/8", W 3/16"	1
7	271-4214-1	QUAD RING, VITON, ID 1", W 1/8"	1
8	271-6125-1	VENTED SCREW, #8-32 UNC X 3/8" LG, SST, SHCS	6
9	271-6128-1	VENTED SCREW, #8-32 X 1/2" SST SHCS	8
10	271-6145-1	VENTED SCREW, #10-32 X 3/8" SST SHCS	2
11	271-6150-1	VENTED SCREW, #10-32 X 1/2" SHCS	20
12	271-6199-2	SET SCREW, #6-32 X 1/2" SST	2
13	272-0125-2	COIL CONNECTOR ASSEMBLY	1
14	294-0053-2	POLE PIECE	4
15	294-0055-1	PERMANENT MAGNET	1
16	294-0058-2	MAGNET ARM, LEFT	1
17	294-0059-2	MAGNET ARM, RIGHT	1
18	294-0080-1	FRONT SHIELD ASSEMBLY	1
19	294-0083-1	REAR SHIELD	1
20	294-0085-1	WATER BLOCK	2
21	294-0086-1	SHIELD, REAR HALF	1
22	294-0088-2	MOUNTING STRAP	1
23	297-0140-2	EXTERNAL ASSEMBLY	1
24	281-0035-1	BEARING, 1-1/8	1
25	297-0060-2	BASE PLATE (297) AF	1
26	296-1443-1	CRUCIBLE BASE ASSEMBLY	1
27	297-0452-3	CRUCIBLE WATER DUCT ASSEMBLY, H/F	1
28	297-0471-5	ASSEMBLY, WELD, FEEDTHRU, (296/297)	1
29	294-0442-2	CRUCIBLE BASE	1

UNLESS OTHERWISE SPECIFIED GLOBAL TOLERANCES		DWG BY: G. DION DATE: 3-30-2015	MATERIAL:	TELEMARK Battle Ground, WA	
		CHECK BY: DATE: PROJ ENG DATE: MFG ENG DATE:	SEE PARTS LIST		
INCHES [mm] X +/- .03 [0.762] .XX +/- 0.01 [0.254] .XXX +/- 0.005 [0.127] ANGLES +/- .5° SURF FINISH 63 RMS		DO NOT SCALE DRAWING	FINISH:	296 EB SOURCE SUB ASSEMBLY, AS	
		FILE NUMBER - 296-1135-2 INITIAL PROJECT - 296	THIRD ANGLE PROJECTION		
CONFIDENTIAL. This document contains proprietary data of TELEMARK and is not to be copied or distributed without the prior written consent of TELEMARK. The receipt or possession of the document does not convey any rights to reproduce it, disclose its contents, or to manufacture, use or sell anything incorporating the concepts and details disclosed by it. Such concepts and details are not to be used other than for the benefit of TELEMARK and are not to be disclosed to others without the prior written consent of an officer of TELEMARK.				SCALE 1:4 SHEET 1 of 1	DWG NO. 296-1135-2 REV B

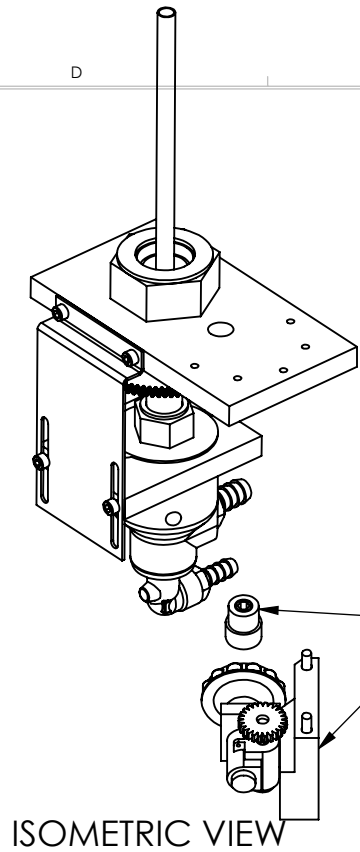
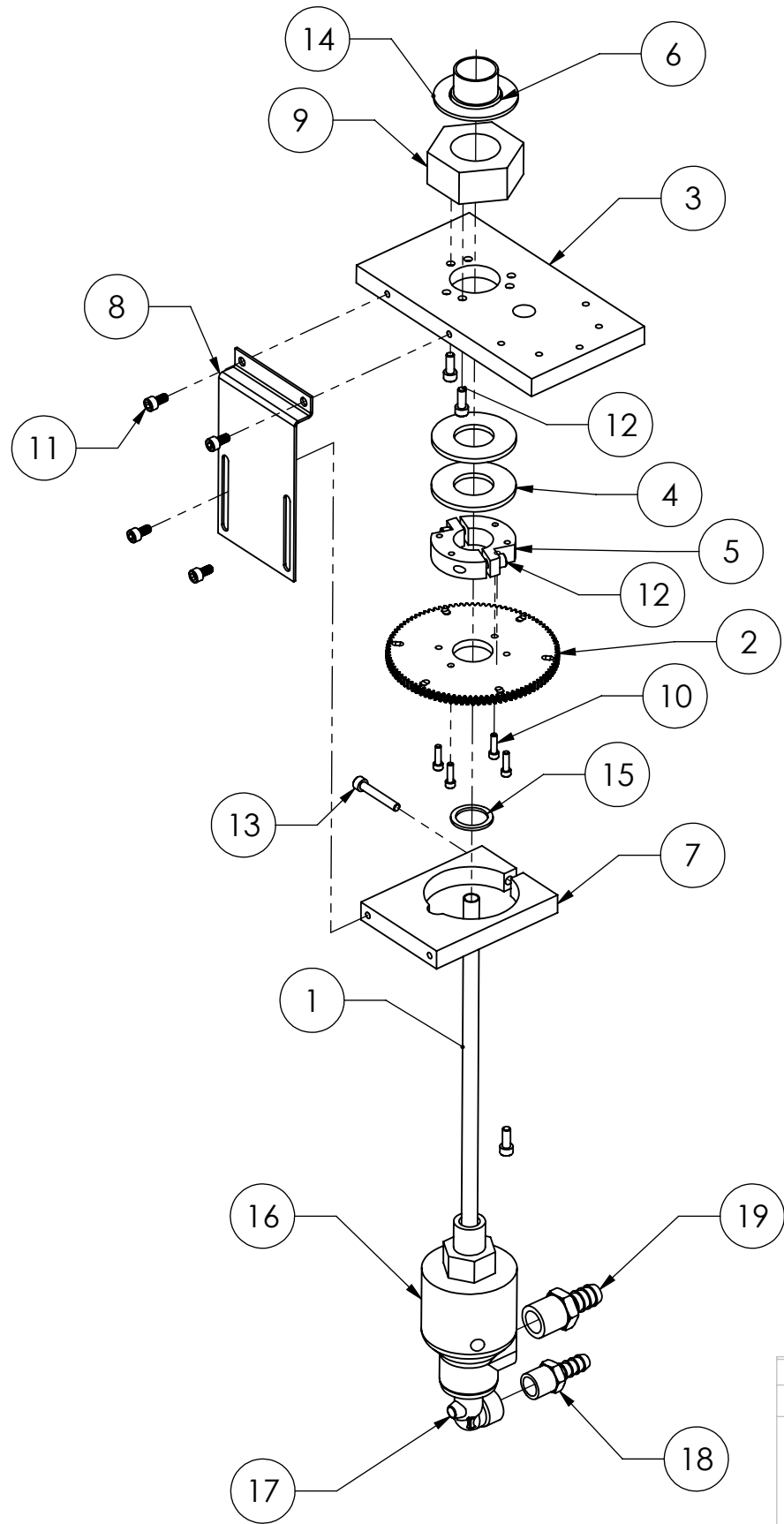


ECN	ZONE	REV	DESCRIPTION	BY	DATE
		A	RELEASE	GPD	6/28/2022

NOTE:
THIS MODEL SOURCE IS BEING SUPPLIED WITH TELEMAR'S NEW ARC SUPPRESSION EMITTER.
THIS NEW EMITTER IS IDENTIFIED BY:
A "4" ON THE FRONT SURFACE OF THE MOUNTING BRACKET
STANDARD EMITTER PART NUMBER 274-0150-1 USES STAINLESS
STEEL SCREWS.
UHV EMITTER PART NUMBER 274-0150-3 USES SILVER-PLATED
SCREWS.
THE PRIMARY COMPONENTS IN THIS EMITTER ARE DIFFERENT
FROM THOSE IN OUR LEGACY EMITTER AND ARE NOT
INTERCHANGEABLE WITH THOSE OF THE LEGACY EMITTER.

ITEM NO.	PART NUMBER	DESCRIPTION	QTY.
1	271-0650-2	WATER FITTING NUT	2
2	271-0651-2	WATER FITTING GLAND	2
3	271-2109-1	O-RING, VITON, ID 5/16", W 3/32"	6
4	271-2110-1	O-RING, VITON, ID 3/8", W 3/32"	2
5	271-2261-1	O-RING, VITON, ID 6-3/4", W 1/8"	1
6	271-4214-1	QUAD RING, VITON, ID 1", W 1/8"	1
7	271-6050-1	VENTED SCREW, #6-32 UNC X 3/8" SHCS	1
8	271-6125-1	VENTED SCREW, #8-32 UNC X 3/8" LG, SST, SHCS	6
9	271-6128-1	VENTED SCREW, #8-32 X 1/2" SST SHCS	8
10	271-6150-1	VENTED SCREW, #10-32 X 1/2" SHCS	20
11	271-6199-2	SET SCREW, #6-32 X 1/2" SST	2
12	272-0125-2	COIL CONNECTOR ASSEMBLY	1
13	274-0150-1	EMITTER ASSEMBLY	1
14	294-0053-2	POLE PIECE	4
15	294-0055-1	PERMANENT MAGNET	1
16	294-0058-2	MAGNET ARM, LEFT	1
17	294-0059-2	MAGNET ARM, RIGHT	1
18	297-0060-1	BASE PLATE, 297	1
19	294-0080-1	FRONT SHIELD ASSEMBLY	1
20	294-0083-1	REAR SHIELD	1
21	294-0085-1	WATER BLOCK	2
22	294-0086-1	SHIELD, REAR HALF	1
23	267-0140-3	EXTERNAL ASSEMBLY, 8 PKT	1
24	281-0035-1	BEARING, 1-1/8	1
25	297-0442-1	CRUCIBLE BASE, ASSEMBLY	1
26	297-0452-3	CRUCIBLE WATER DUCT ASSEMBLY, H/F	1
27	297-0471-1	FEEDTHRU, 297	1

UNLESS OTHERWISE SPECIFIED GLOBAL TOLERANCES		DWG BY: G. DION DATE: 6-28-2022	MATERIAL: SEE PARTS LIST	TELEMAR Battle Ground, WA	
INCHES [mm] X +/- .03 [0.762] .XX +/- .01 [0.254] .XXX +/- .005 [0.127] ANGLES +/- .5° SURF FINISH .63 RMS		CHECK BY: _____ DATE: _____ PROJ ENG: _____ DATE: _____ MFG ENG: _____ DATE: _____	FINISH: _____		
DO NOT SCALE DRAWING		FILE NUMBER - 296-1135-3 INITIAL PROJECT - 296	THIRD ANGLE PROJECTION	296 EB SOURCE SUB ASSEMBLY, 8 PKT	
CONFIDENTIAL. This document contains proprietary data of TELEMAR and is not to be copied or distributed without the prior written consent of TELEMAR. The receipt or possession of the document does not convey any rights to reproduce it, disclose its contents, or to manufacture, use or sell anything incorporating the concepts and details disclosed by it. Such concepts and details are not to be used other than for the benefit of TELEMAR and are not to be disclosed to others without the prior written consent of an officer of TELEMAR.		C SCALE 1:4 SHEET 1 of 1		DWG NO. 296-1135-3	REV A



ISOMETRIC VIEW

OPTIONAL MANUAL DRIVE 267-9025-1

ECN	ZONE	REV	DESCRIPTION	BY	DATE
		A	RELEASE	GPD	3/30/2015

ITEM NO.	PART NUMBER	DESCRIPTION	Default/ QTY.
1	296-0455-3	WATER INLET TUBE	1
2	267-0149-1	GEAR	1
3	267-0160-1	MOTOR CLAMP	1
4	267-0160-6	MOTOR CLAMP WASHER	2
5	267-0162-1	GEAR CLAMP	2
6	267-0163-1	BUSHING	1
7	267-0170-1	UNION CLAMP	1
8	267-0171-1	UNION STRAP	1
9	267-0472-1	FEEDTHRU NUT	1
10	271-6060-9	SCREW, #6-32 X 1/2" SST SHCS	4
11	271-6145-9	SCREW, #10-32 UNF X 3/8" SST SHCS	4
12	271-6150-9	SCREW, #10-32 X 1/2" SST SHCS.	5
13	271-6175-9	SCREW, #10-32 X 1/2" SST SHCS.	1
14	275-0046-2	WASHER, 1.25"	1
15	281-2010-1	GASKET, WATER UNION	1
16	281-4020-1	WATER UNION	1
17	281-4022-1	WATER FITTING ELBOW, 3/8 NPT-F X 3/8 TB	1
18	281-4023-1	WATER FITTING, 1/2 NPT X 1/2 TB	1
19	281-4024-1	WATER FITTING, 3/8 NPT X 1/2 TB	1

UNLESS OTHERWISE SPECIFIED
GLOBAL TOLERANCES

	INCHES	[mm]
.X	+/- .03	[0.762]
.XX	+/- 0.01	[0.254]
.XXX	+/- 0.005	[0.127]

ANGLES +/- .5°
SURF FINISH 63 RMS

DWG BY **G. DION** DATE **3-30-2015**
CHECK BY DATE
PROJ ENG DATE
MFG ENG DATE

DO NOT SCALE DRAWING

FILE NUMBER - 297-0140-2
INITIAL PROJECT -

MATERIAL: SEE PARTS LIST

FINISH: SEE NOTES

THIRD ANGLE PROJECTION

TELEMARK Battle Ground, WA

EXTERNAL ASSEMBLY

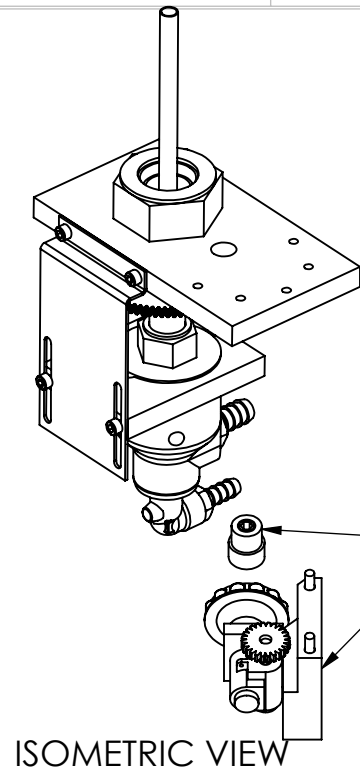
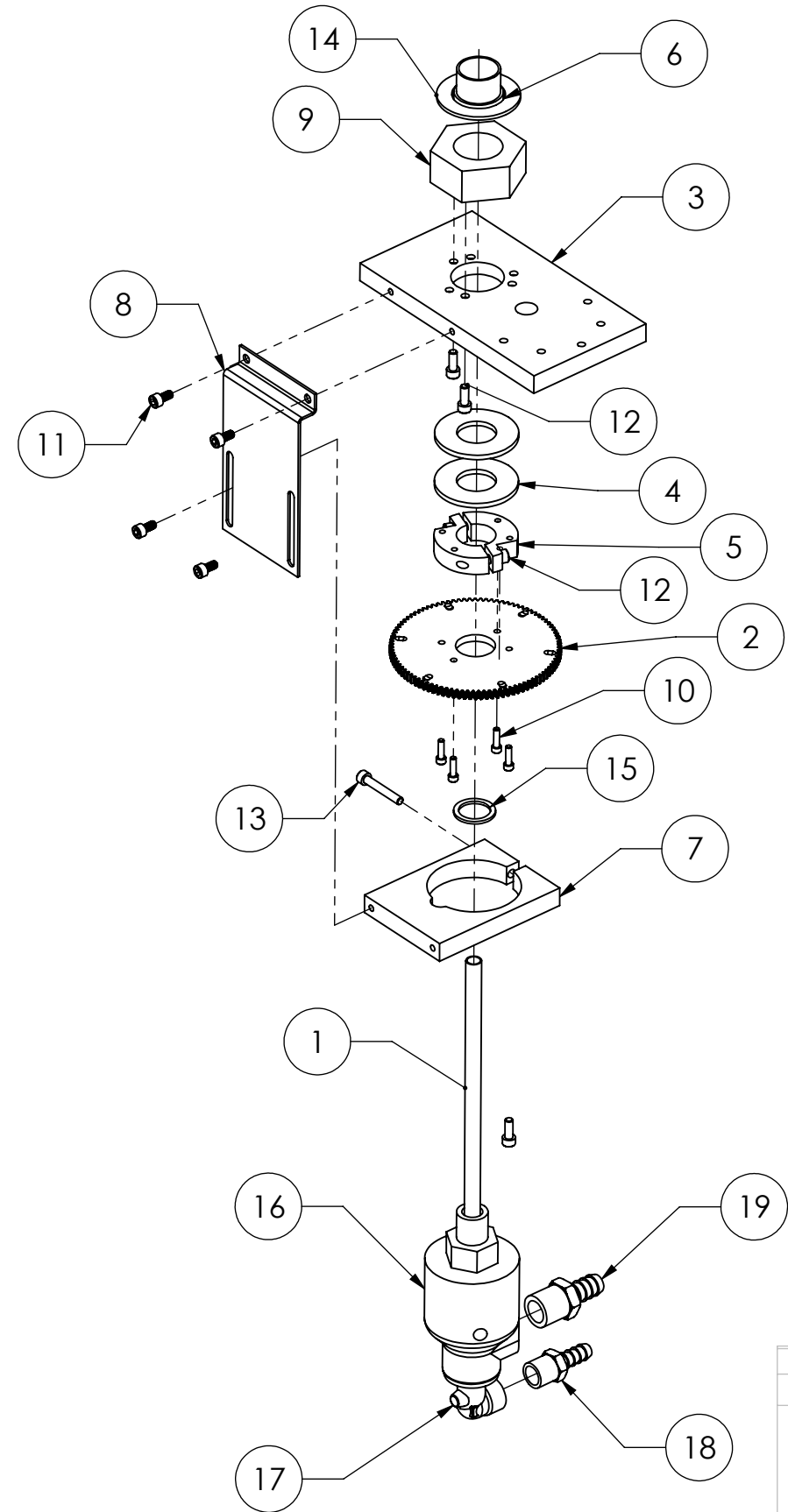
B

SCALE **1:4**
SHEET **1** of **1**

DWG NO. **297-0140-2**

REV **A**

CONFIDENTIAL. This document contains proprietary data of TELEMARK and is not to be copied or distributed without the prior written consent of TELEMARK. The receipt or possession of the document does not convey any rights to reproduce it, disclose its contents, or to manufacture, use or sell anything incorporating the concepts and details disclosed by it. Such concepts and details are not to be used other than for the benefit of TELEMARK and are not to be disclosed to others without the prior written consent of an officer of TELEMARK.



OPTIONAL MANUAL DRIVE 267-9025-1

ECN	ZONE	REV	DESCRIPTION	BY	DATE
		A	RELEASE	GPD	2-29-2022

ITEM NO.	PART NUMBER	DESCRIPTION	Default/ QTY.
1	296-0455-3	WATER INLET TUBE	1
2	267-0149-2	GEAR, 8 PKT	1
3	267-0160-1	MOTOR CLAMP	1
4	267-0160-6	MOTOR CLAMP WASHER	2
5	267-0162-1	GEAR CLAMP	2
6	267-0163-1	BUSHING	1
7	267-0170-1	UNION CLAMP	1
8	267-0171-1	UNION STRAP	1
9	267-0472-1	FEEDTHRU NUT	1
10	271-6060-9	SCREW, #6-32 X 1/2" SST SHCS	4
11	271-6145-1	VENTED SCREW, #10-32 UNF X 3/8" SST, SHCS	4
12	271-6150-9	SCREW, #10-32 X 1/2" SST SHCS.	5
13	271-6175-9	SCREW, #10-32 X 1-1/4" SST SHCS.	1
14	275-0046-2	WASHER, 1.25"	1
15	281-2010-1	GASKET, WATER UNION	1
16	281-4020-1	WATER UNION	1
17	281-4022-1	WATER FITTING ELBOW, 3/8 NPT-F X 3/8 TB	1
18	281-4023-1	WATER FITTING, 1/2 NPT X 1/2 TB	1
19	281-4024-1	WATER FITTING, 3/8 NPT X 1/2 TB	1

UNLESS OTHERWISE SPECIFIED
GLOBAL TOLERANCES

	INCHES	[mm]
.X	+/- .03	[0.762]
.XX	+/- 0.01	[0.254]
.XXX	+/- 0.005	[0.127]

ANGLES +/- .5°
SURF FINISH 63 RMS

DWG BY **G. DION** DATE **6-29-2022**
CHECK BY DATE
PROJ ENG DATE
MFG ENG DATE

DO NOT SCALE DRAWING

FILE NUMBER - 297-0140-3
INITIAL PROJECT -

MATERIAL: SEE PARTS LIST
FINISH: SEE NOTES
THIRD ANGLE PROJECTION

TELEMARK Battle Ground, WA

EXTERNAL ASSEMBLY, 8 PKT

B

SCALE 1:4
SHEET 1 of 1

DWG NO. **297-0140-3**

REV **A**

CONFIDENTIAL. This document contains proprietary data of TELEMARK and is not to be copied or distributed without the prior written consent of TELEMARK. The receipt or possession of the document does not convey any rights to reproduce it, disclose its contents, or to manufacture, use or sell anything incorporating the concepts and details disclosed by it. Such concepts and details are not to be used other than for the benefit of TELEMARK and are not to be disclosed to others without the prior written consent of an officer of TELEMARK.



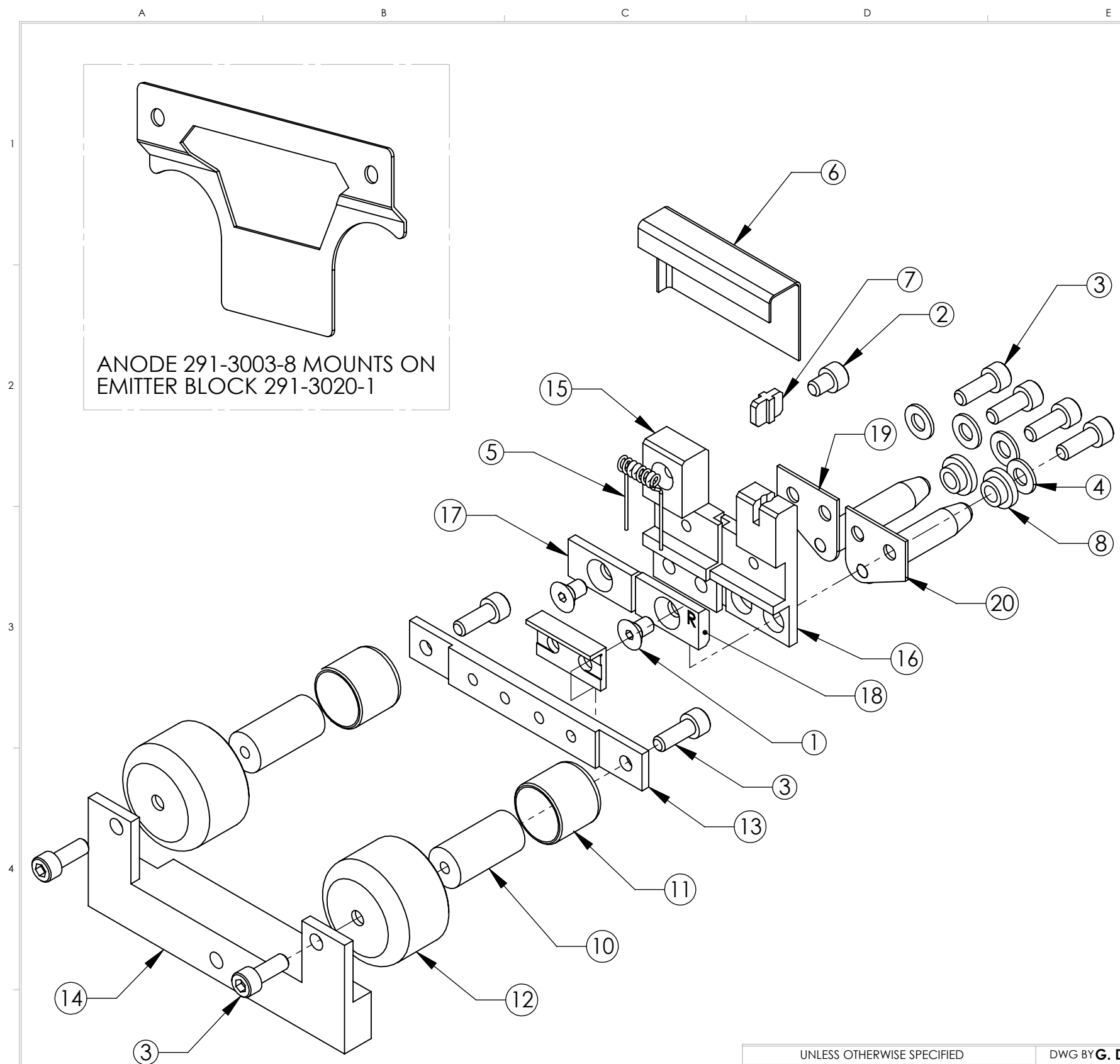
Optional Assemblies

Self Sealing Cover

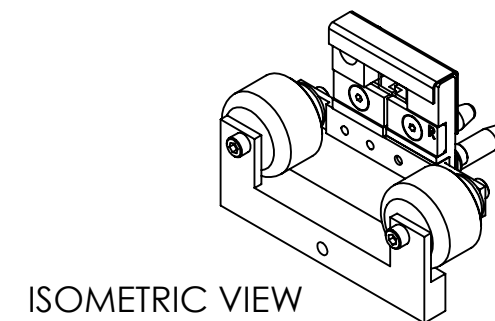


Optional Assemblies

Arc Suppression



ECN	ZONE	REV	DESCRIPTION	BY	DATE
		A	RELEASE	GPD	12/8/2014



ITEM NO.	PART NUMBER	DESCRIPTION	QTY.
1	271-6010-5	SCREW, #6-32 X 1/4" SLOT FLAT HEAD, Ti	2
2	271-6020-5	SCREW, #6-32 X 3/16" TI SHCS	1
3	271-6050-5	SCREW, #6-32 X 3/8" SHCS, Ti	8
4	271-6242-1	FLAT WASHER, #6 SST	4
5	273-0001-1	FILAMENT, 7-1/2 TURN	1
6	273-0004-2	BEAM FORMER	1
7	291-3005-1	INSULATOR, CROSS	1
8	291-3006-1	INSULATOR, COLLAR	2
9	291-3008-1	L INSULATOR	1
10	291-3010-1	HV INSULATOR	2
11	291-3011-1	HV SHIELD, AS	2
12	291-3013-1	HV SHIELD	2
13	291-3017-2	MOUNTING BRACKET, AS	1
14	291-3018-1	EMITTER SUPPORT BRACKET	1
15	291-3031-1	CATHODE BLOCK, LEFT	1
16	291-3032-1	CATHODE BLOCK, RIGHT	1
17	291-3033-3	FILAMENT CLAMP, LEFT	1
18	291-3033-4	FILAMENT CLAMP, RIGHT	1
19	291-3035-1	EMITTER BUS BAR ASSY., LEFT	1
20	291-3036-1	EMITTER BUS BAR ASSY., RIGHT	1

<div>UNLESS OTHERWISE SPECIFIED</div> <div>GLOBAL TOLERANCES</div> <table><tr><td></td><td>INCHES</td><td>[mm]</td></tr><tr><td>.X</td><td>+/- .03</td><td>[0.762]</td></tr><tr><td>.XX</td><td>+/- 0.01</td><td>[0.254]</td></tr><tr><td>.XXX</td><td>+/- 0.005</td><td>[0.127]</td></tr></table> <div>ANGLES +/- .5°</div> <div>SURF FINISH 63 RMS</div>		INCHES	[mm]	.X	+/- .03	[0.762]	.XX	+/- 0.01	[0.254]	.XXX	+/- 0.005	[0.127]	DWG BY G. DION DATE 12-8-2014	MATERIAL:	<div>TELEMARK <small>telemark.com</small></div> <div>EMITTER ASSEMBLY, AS 271</div> <div>273, 274, 276, 279, 294, 296</div>
		INCHES	[mm]												
	.X	+/- .03	[0.762]												
	.XX	+/- 0.01	[0.254]												
.XXX	+/- 0.005	[0.127]													
CHECK BY	DATE	FINISH:													
PROJ ENG	DATE	THIRD ANGLE PROJECTION													
MFG ENG	DATE														
DO NOT SCALE DRAWING															
FILE NUMBER - 291-3151-3															
INITIAL PROJECT -															
<small>CONFIDENTIAL. This document contains proprietary data of TELEMARK and is not to be copied or distributed without the prior written consent of TELEMARK. The receipt or possession of the document does not convey any rights to reproduce it, disclose its contents, or to manufacture, use or sell anything incorporating the concepts and details disclosed by it. Such concepts and details are not to be used other than for the benefit of TELEMARK and are not to be disclosed to others without the prior written consent of an officer of TELEMARK.</small>															

B	SCALE	1:1	DWG NO.	291-3151-3	REV
	SHEET	1 of 1			A

A

B

C

D

E

F

G

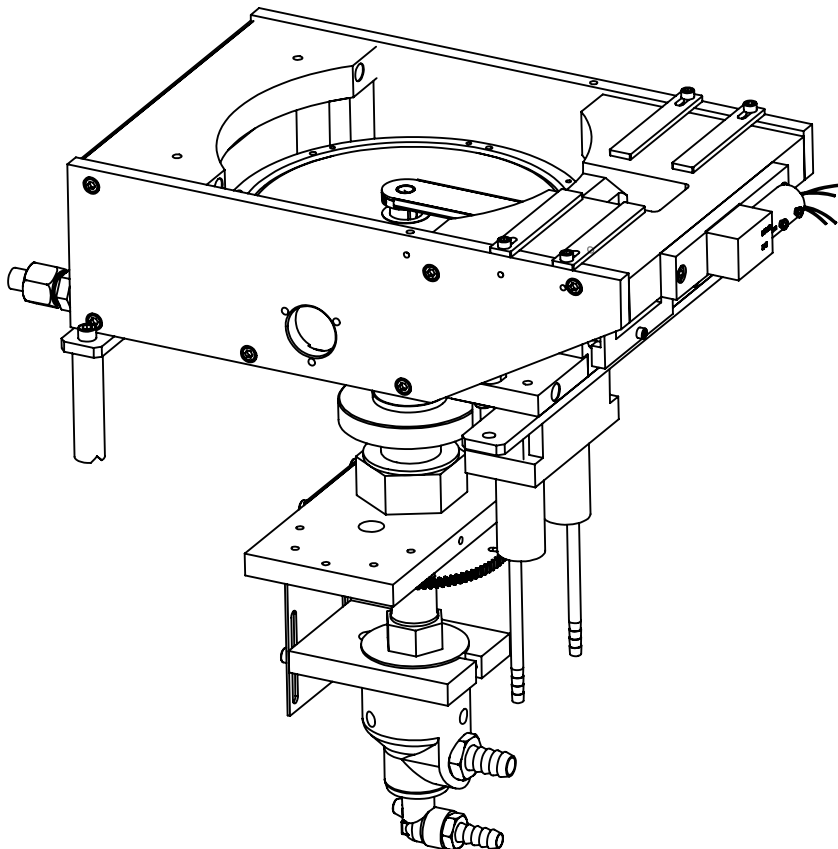
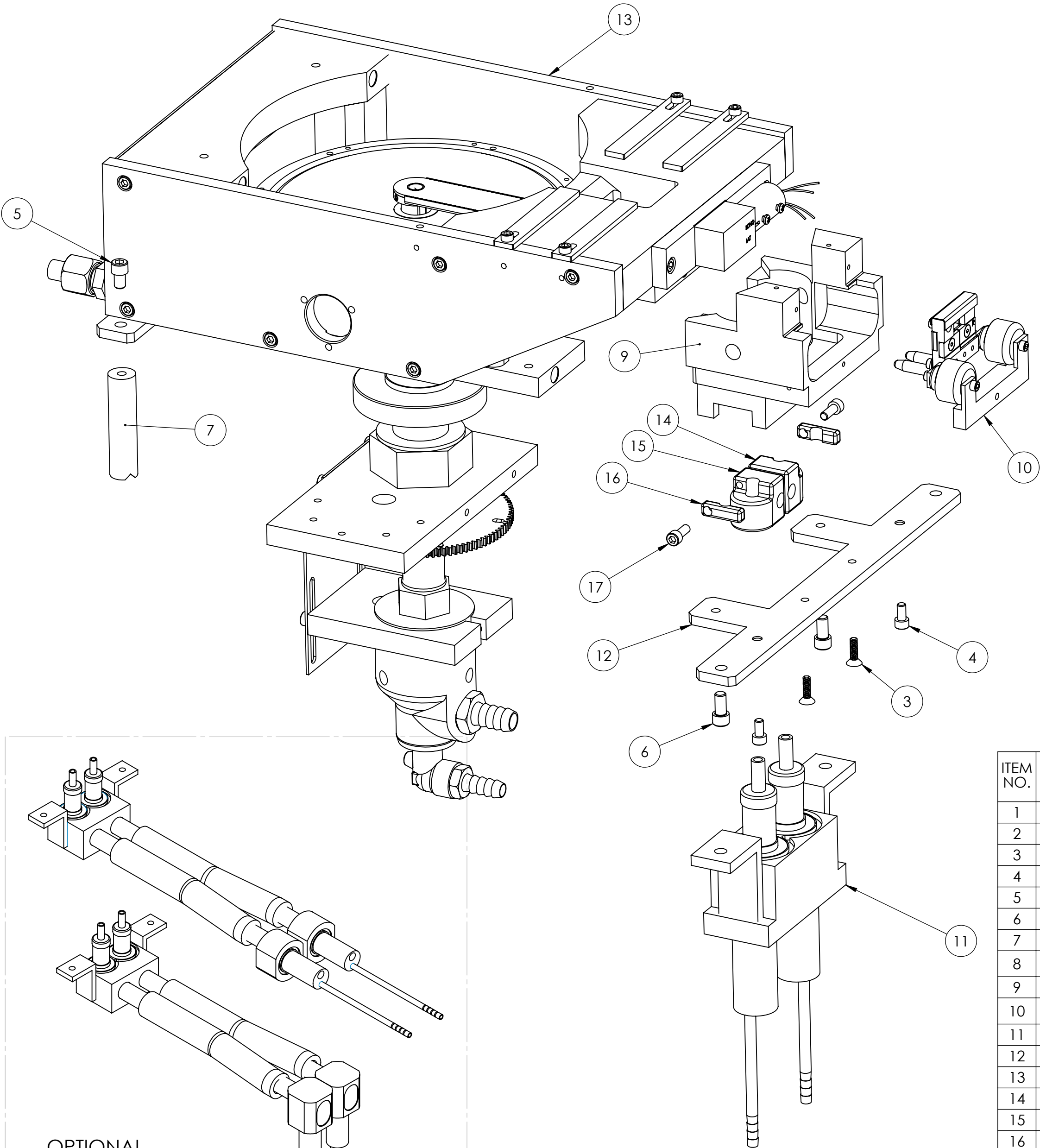
ECN	ZONE	REV	DESCRIPTION	BY	DATE
		A	RELEASE	GPD	3/30/2015

1

2

3

4



ITEM NO.	PART NUMBER	DESCRIPTION	straigh feedthru/QTY.
1	271-6030-1	VENTED SCREW, #6-32 UNC X 1/4" SHCS	2
2	271-6060-1	VENTED SCREW, #6-32 X 1/2" SST SHCS	1
3	271-6134-1	VENTED SCREW, #8-32 X 1/2" SST FHS	2
4	271-6145-1	VENTED SCREW, #10-32 X 3/8" SST SHCS	2
5	271-6180-1	VENTED SCREW, 1/4-20 X 3/8" SST SHCS	2
6	271-6190-1	VENTED SCREW, 1/4-20 X 1/2" SST SHCS	2
7	291-0465-1	STANDOFF, SOURCE	2
8	291-3003-8	ANODE	REF
9	291-3020-1	EMITTER BLOCK	1
10	291-3151-3	EMITTER ASSEMBLY, AS, 271, 273, 274, 276, 279, 294, 296	1
11	291-5190-1	DUAL HV F/T WELD ASSY.	1
12	294-0089-1	MOUNTING STRAP	1
13	296-1135-2	294 EB SOURCE SUB ASSEMBLY	1
14	291-5040-1	POWER BLOCK, L.H.	1
15	291-5041-1	POWER BLOCK, R.H.	1
16	291-5042-1	POWER CLAMP	2
17	271-6150-6	VENTED SCREW, #10-32 X 1/2" SST SHCS, SILVER	2

OPTIONAL
FEEDTHRU ASSEMBLIES

UNLESS OTHERWISE SPECIFIED
GLOBAL TOLERANCES

X	INCHES	[mm]
XX	+/- .03	[0.762]
XXX	+/- 0.01	[0.254]
	+/- 0.005	[0.127]

ANGLES +/- .5°
SURF FINISH 63 RMS

DWG BY: **G. DION** DATE: **3-30-2015**
CHECK BY: _____ DATE: _____
PROJ ENG: _____ DATE: _____
MFG ENG: _____ DATE: _____

DO NOT SCALE DRAWING

FILE NUMBER - 296-5175-1
INITIAL PROJECT -

MATERIAL: SEE PARTS LIST

FINISH:

THIRD ANGLE PROJECTION

TELEMARK Battle Ground, WA

**296 ARC SUPPRESSION
OPTION**

SCALE 1:2	DWG NO. 296-5175-1	REV A
SHEET 1 of 1		

CONFIDENTIAL. This document contains proprietary data of TELEMARK and is not to be copied or distributed without the prior written consent of TELEMARK. The receipt or possession of the document does not convey any rights to reproduce it, disclose its contents, or to manufacture, use or sell anything incorporating the concepts and details disclosed by it. Such concepts and details are not to be used other than for the benefit of TELEMARK and are not to be disclosed to others without the prior written consent of an officer of TELEMARK.