

# ***TELEMARK*** 508 UHV E-Beam Source Drawings

The current version of this drawing pdf can be found at

<https://telemark.com/uhv-e-beam-sources/ultra-compact-uhv-source/>

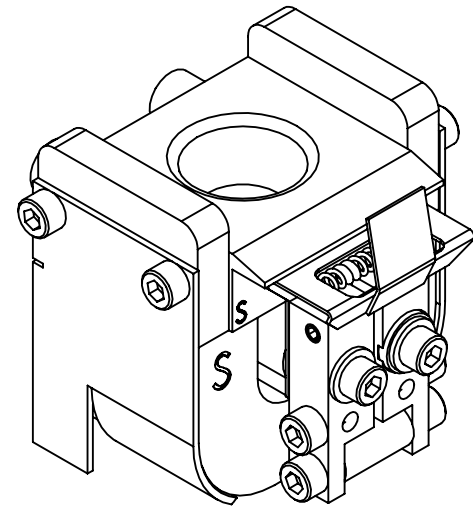
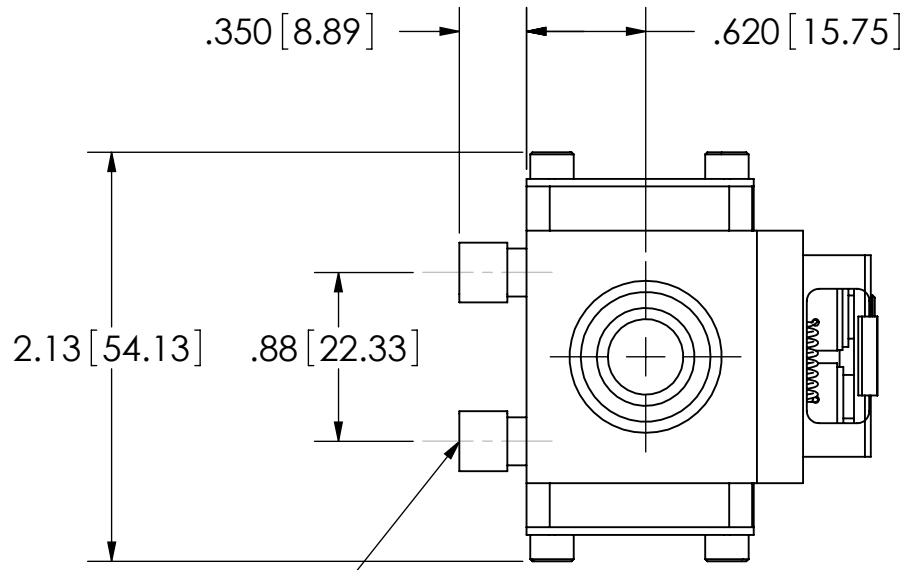
<b>Drawing</b>	<b>Rev.</b>	<b>Description</b>	<b>Page</b>
<b>Reference Dimensions</b>			2
R508-0000	B	Model 508 E-Beam Source Dimensions	3
R508-0112	A1	Model 508 on 2.75" CFF E-Beam Source Dimensions	4
<b>Model Assemblies</b>			5
508-9901-1	B	Model 508-01 EB Source	6
<b>Common Assemblies</b>			7
508-3150-2	A	Emitter Assembly	8

***TELEMARK***

# Reference Dimensions

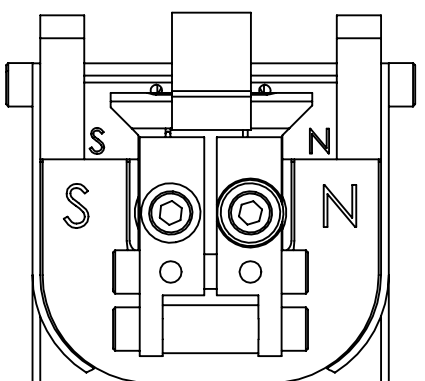
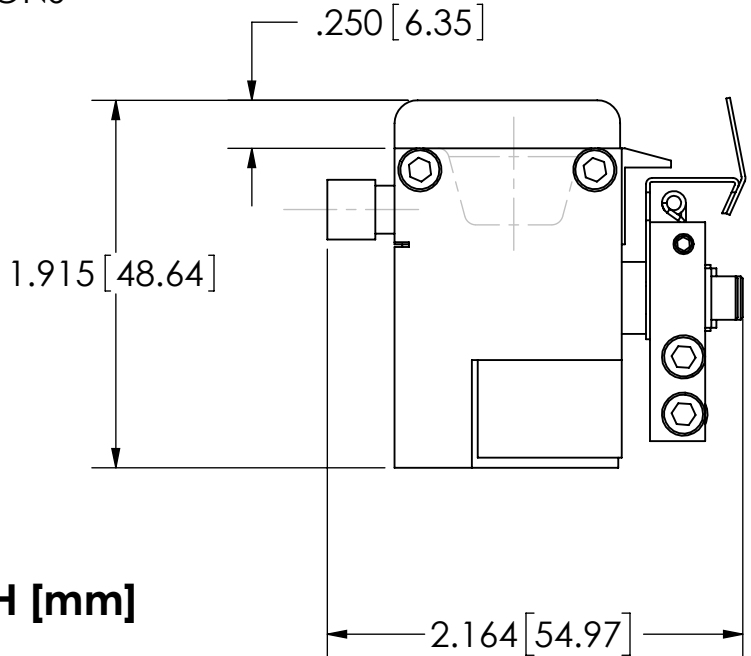
**E-Beam Source**

REVISIONS				
ZONE	REV.	DESCRIPTION	DATE	APPROVED
	A		8/11/2005	
	B	EMITTER FROM 508-3150-1 TO 508-3150-2	2/18/2016	



ISOMETRIC VIEW

2X .250 DIAMETER  
X .20 DEEP FOR  
WATER CONNECTIONS



INCH [mm]

UNLESS OTHERWISE SPECIFIED	
GLOBAL TOLERANCES	
INCHES	[mm]
.X +/- .03	[0.762]
.XX +/- 0.01	[0.254]
.XXX +/- 0.005	[0.127]
ANGLES +/- .5°	
SURF FINISH 63 RMS	

DWG BY	DATE
CHECK BY	DATE
PROJ ENG	DATE
MFG ENG	DATE
DO NOT SCALE DRAWING	
FILE NUMBER	- R508-0000
INITIAL PROJECT	- 508

MATERIAL:
FINISH:
THIRD ANGLE PROJECTION

**TELEMARK** telemark.com

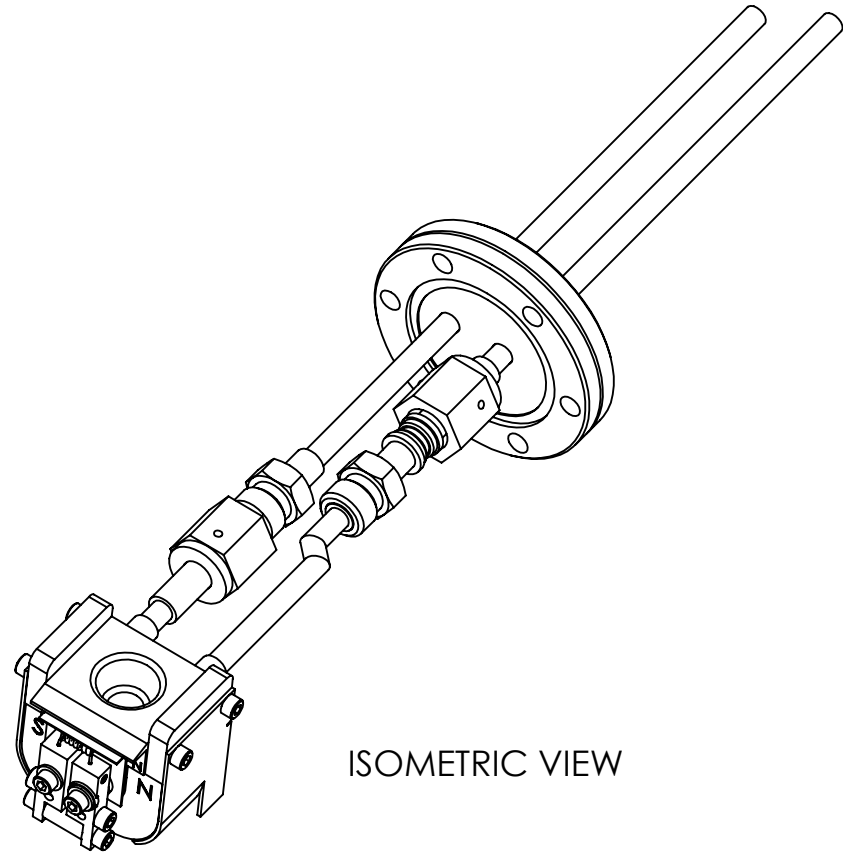
**508 EB SOURCE**

CONFIDENTIAL. This document contains proprietary data of TELEMARK and is not to be copied or distributed without the prior written consent of TELEMARK. The receipt or possession of the document does not convey any rights to reproduce it, disclose its contents, or to manufacture, use or sell anything incorporating the concepts and details disclosed by it. Such concepts and details are not to be used other than for the benefit of TELEMARK and are not to be disclosed to others without the prior written consent of an officer of TELEMARK.

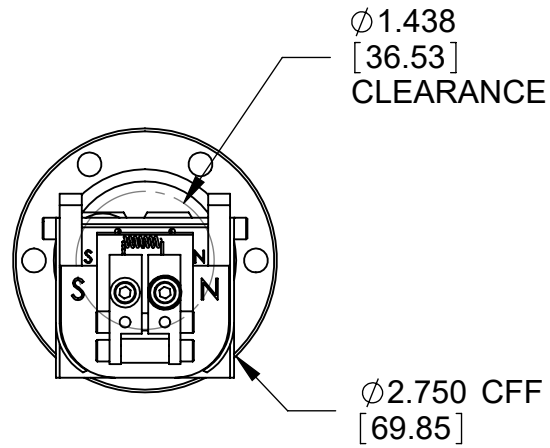
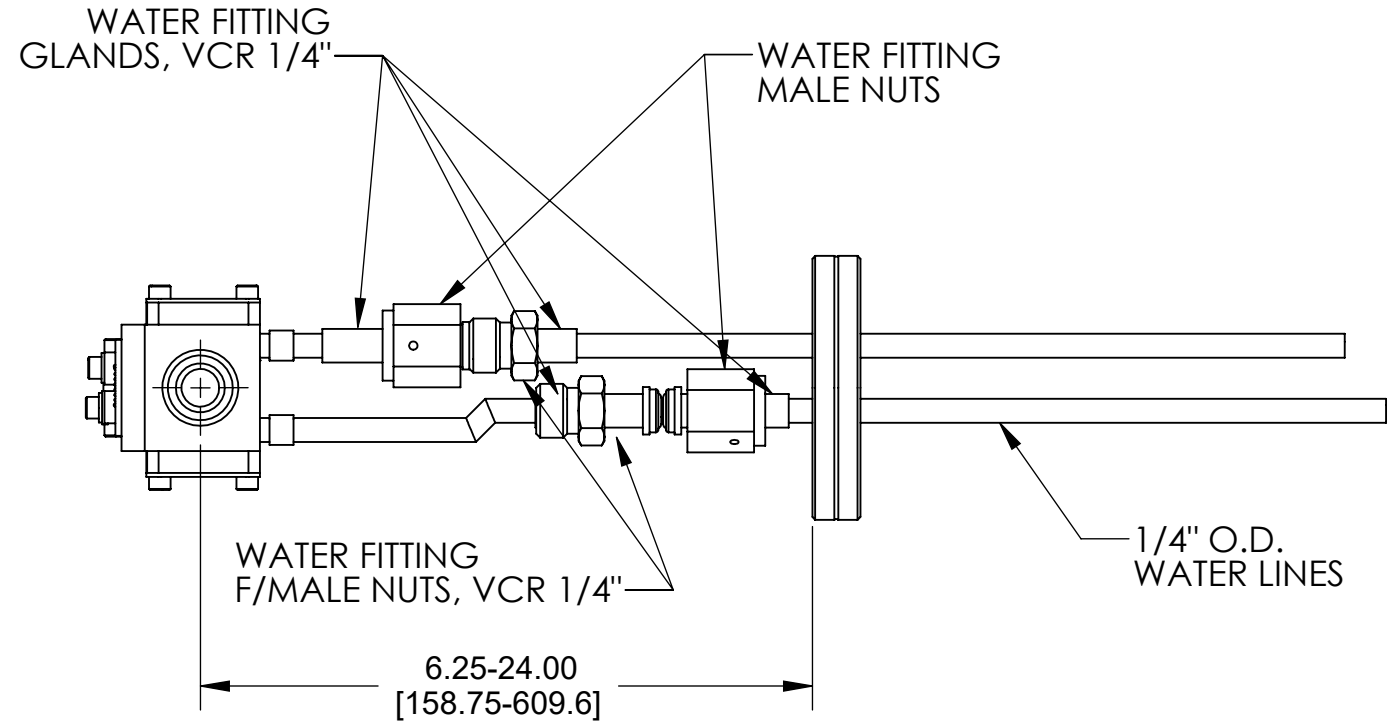
<b>B</b>	SCALE	1:1	DWG NO.	<b>R508-0000</b>	REV	<b>B</b>
	SHEET	1 of 2				

NOTES: (UNLESS OTHERWISE SPECIFIED)

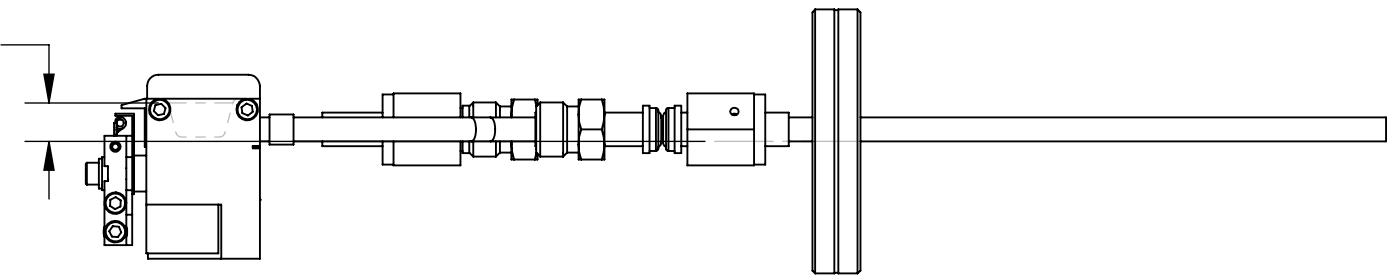
ECN	ZONE	REV	DESCRIPTION	BY	DATE
		A	RELEASE FOR PRODUCTION	D. LY	3/2/2010
		A1	UPDATE DIM	PWF	4/2/2018



ISOMETRIC VIEW



.40  
[10.17]



CUSTOMER APPROVAL:

DATE:

UNLESS OTHERWISE SPECIFIED	
GLOBAL TOLERANCES	
	INCHES [mm]
.X	+/- .03 [0.762]
.XX	+/- 0.01 [0.254]
.XXX	+/- 0.005 [0.127]
ANGLES +/- .5°	
SURF FINISH 63 RMS	

DWG BY	D. LY	DATE	3/2/2010
CHECK BY		DATE	
PROJ ENG		DATE	
MFG ENG		DATE	
DO NOT SCALE DRAWING			
FILE NUMBER	- R508-0112		
INITIAL PROJECT	-		

MATERIAL:
FINISH:
THIRD ANGLE PROJECTION

**TELEMARK** telemark.com

**508 E-GUN  
MOUNT ON 2.75 CFF**

<b>B</b>	SCALE	1:2	DWG NO.	R508-0112	REV	A
	SHEET	1 of 1				

CONFIDENTIAL. This document contains proprietary data of TELEMARK and is not to be copied or distributed without the prior written consent of TELEMARK. The receipt or possession of the document does not convey any rights to reproduce it, disclose its contents, or to manufacture, use or sell anything incorporating the concepts and details disclosed by it. Such concepts and details are not to be used other than for the benefit of TELEMARK and are not to be disclosed to others without the prior written consent of an officer of TELEMARK.

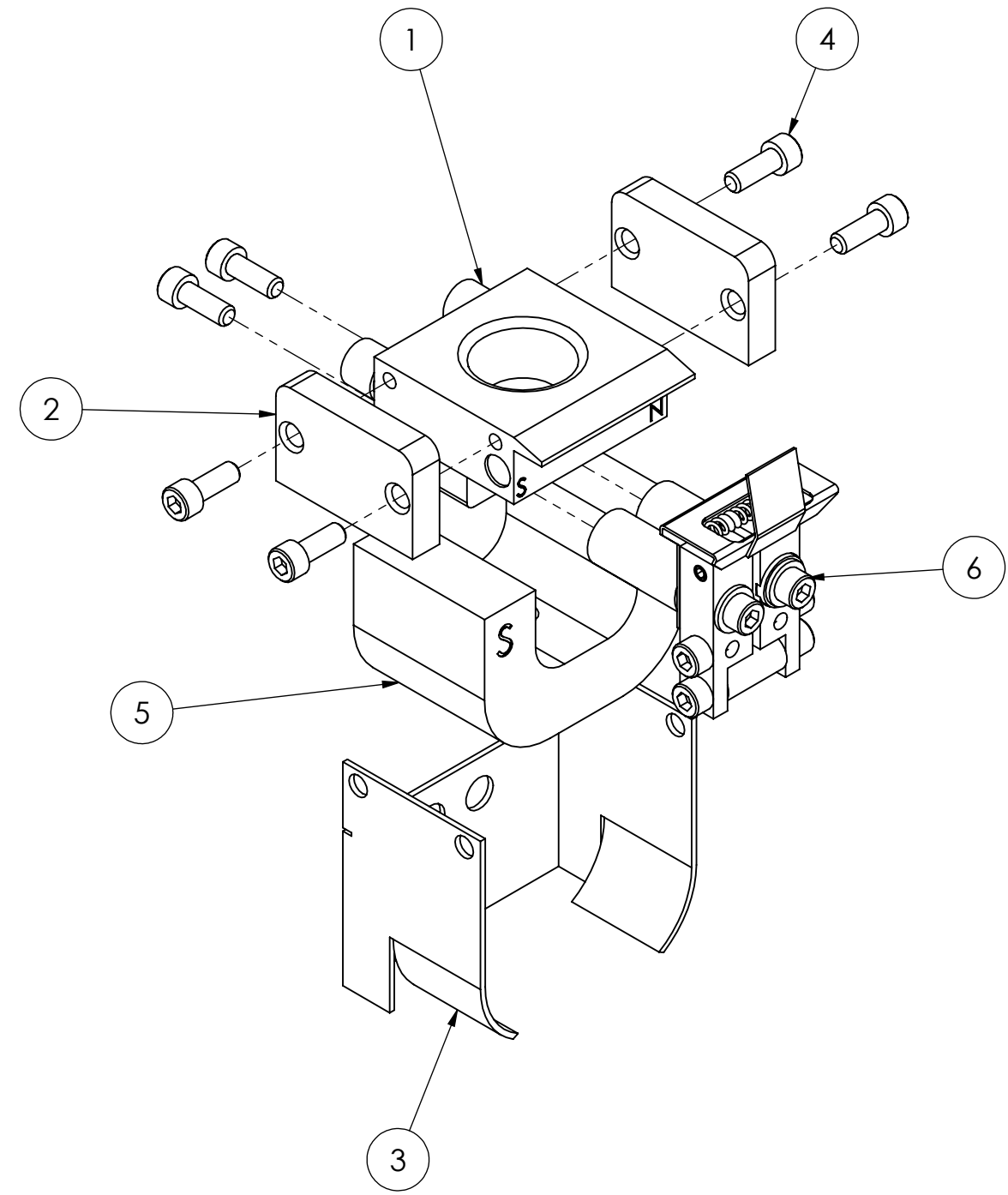
***TELEMARK***

# Model Assemblies


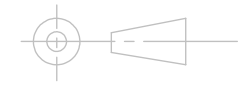
**E-Beam Sources**

A B C D E F G H

ECN	ZONE	REV	DESCRIPTION	BY	DATE
		A	RELEASE	PWF	11/20/2014
		B	UPDATE	PWF	3/23/2018



ITEM NO.	PART NUMBER	DESCRIPTION	QTY.
1	508-0112-1	MAIN BLOCK ASSEMBLY	1
2	508-0058-1	MAGNET ARM	2
3	508-0084-1	SHIELD	1
4	271-6050-1	VENTED SCREW, #6-32 UNC X 3/8\"/>	
5	508-0055-1	PERMANENT MAGNET	1
6	508-3150-2	EMITTER ASSEMBLY	1

UNLESS OTHERWISE SPECIFIED GLOBAL TOLERANCES  INCHES [mm] .X +/- .03 [0.762] .XX +/- 0.01 [0.254] .XXX +/- 0.005 [0.127]  ANGLES +/- .5° SURF FINISH 63 RMS	DWG BY CHECK BY PROJ ENG MFG ENG	DATE DATE DATE DATE	MATERIAL:  FINISH:  THIRD ANGLE PROJECTION	 telemark.com  <b>508 EB SOURCE</b>
	DO NOT SCALE DRAWING  FILE NUMBER - R508-0000 INITIAL PROJECT - 508			
CONFIDENTIAL. This document contains proprietary data of TELEMARK and is not to be copied or distributed without the prior written consent of TELEMARK. The receipt or possession of the document does not convey any rights to reproduce it, disclose its contents, or to manufacture, use or sell anything incorporating the concepts and details disclosed by it. Such concepts and details are not to be used other than for the benefit of TELEMARK and are not to be disclosed to others without the prior written consent of an officer of TELEMARK.				<b>B</b>
SCALE 1:1 SHEET 1 of 1		DWG NO. <b>508-9901-1</b>	REV <b>B</b>	

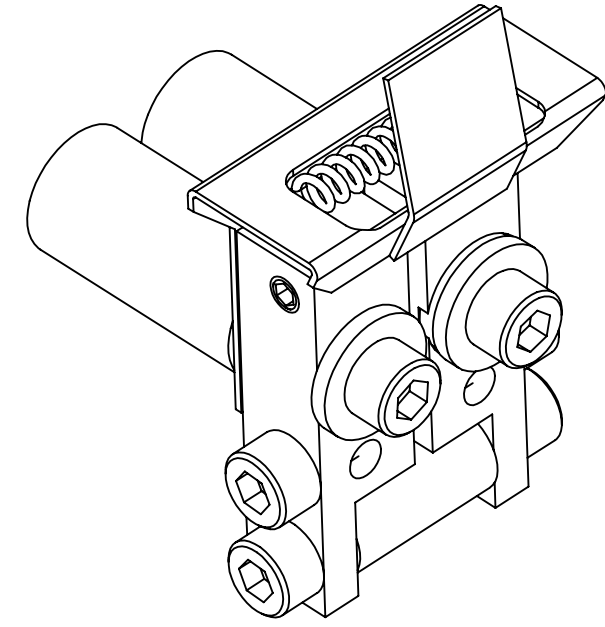
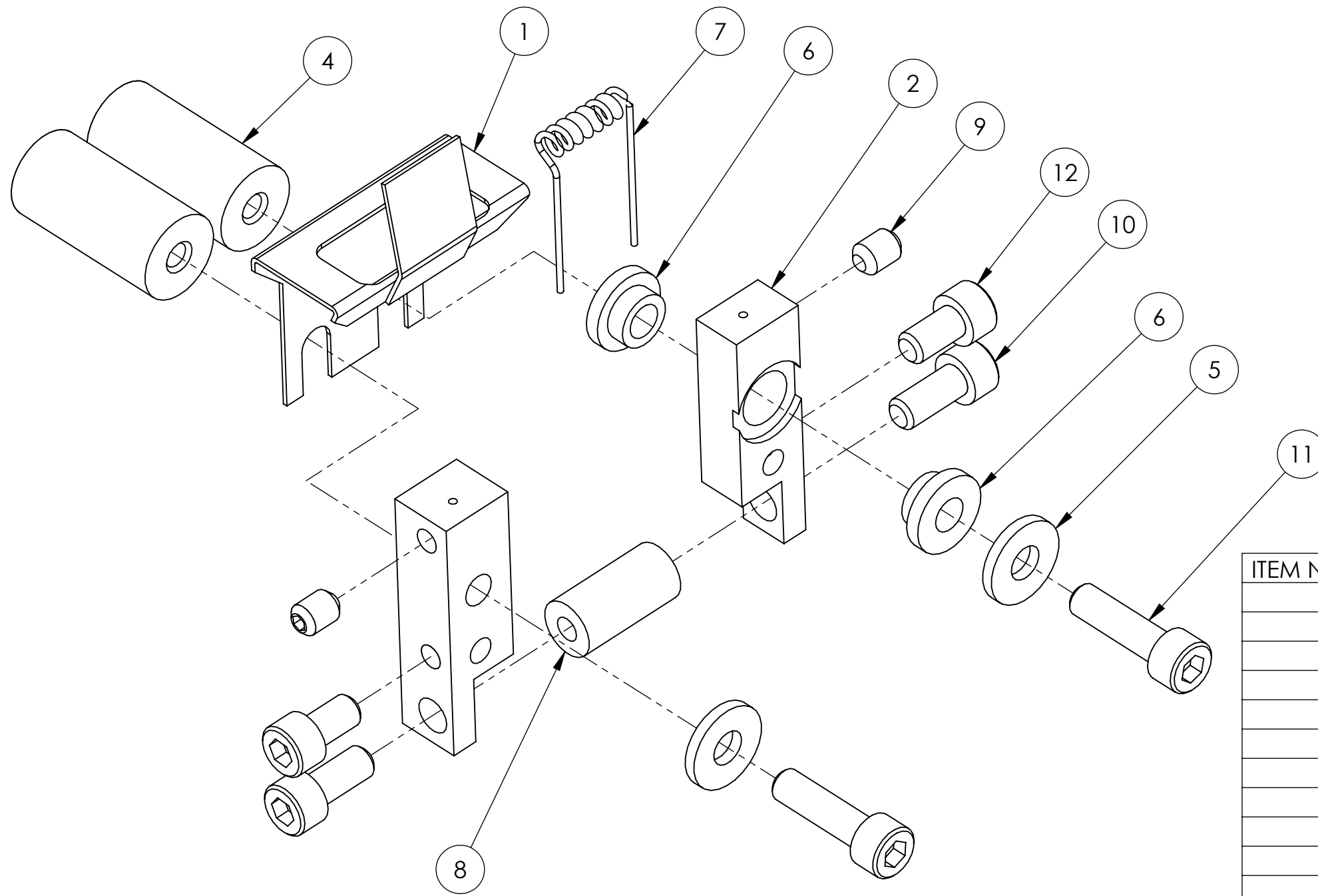
***TELEMARK***

# Common Assemblies

**E-Beam Source**

- NOTES: (UNLESS OTHERWISE SPECIFIED)  
 1. REMOVE BURRS & BREAK ALL SHARP EDGES  
 .005-.015 RAD OR CHAMF.  
 2. ALL SURFACE  $\sqrt{63}$   
 3. BAG WITH PART NUMBER AND REVISION.

ECN	ZONE	REV	DESCRIPTION	BY	DATE
		A	RELEASE FOR PRODUCTION	D. LY	2/10/2011



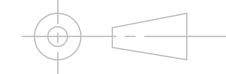
ISOMETRIC VIEW

ITEM NO.	QTY.	PART NO.	DESCRIPTION
1	1	508-3006-1	BEAM FORMER ASSEMBLY
2	1	508-3032-1	CATHODE BLOCK, RIGHT
3	1	508-3031-1	CATHODE BLOCK, LEFT
4	2	273-0010-1	HV INSULATOR
5	2	271-6242-1	FLAT WASHER, #6 SST.
6	2	273-0006-1	INSULATOR, COLLAR
7	1	508-3001-1	FILAMENT, 7 TURN
8	1	508-3009-1	MIDDLE INSULATOR
9	2	271-6211-1	SET SCREW, #6-32 X 3/16 SST
10	2	271-6040-1	VENTED SCREW, #6-32 X 5/16 SST SHCS
11	2	271-6060-1	VENTED SCREW, #6-32 X 1/2" SST SHCS
12	2	271-6030-1	VENTED SCREW, #6-32 X 1/4" SST SHCS

UNLESS OTHERWISE SPECIFIED	
GLOBAL TOLERANCES	
INCHES	[mm]
.X +/- .03	[0.762]
.XX +/- 0.01	[0.254]
.XXX +/- 0.005	[0.127]
ANGLES +/- .5°	
SURF FINISH 63 RMS	

DWG BY **D. LY** DATE **2/10/11**  
 CHECK BY DATE  
 PROJ ENG DATE  
 MFG ENG DATE  
 DO NOT SCALE DRAWING  
 FILE NUMBER - 508-3150-2  
 INITIAL PROJECT -

MATERIAL: B.O.M  
 FINISH: SEE NOTES  
 THIRD ANGLE PROJECTION



**TELEMARK**

1801 SE Commerce Ave  
 Battle Ground, WA 98604

**EMITTER ASSEMBLY**

CONFIDENTIAL. This document contains proprietary data of TELEMARK and is not to be copied or distributed without the prior written consent of TELEMARK. The receipt or possession of the document does not convey any rights to reproduce it, disclose its contents, or to manufacture, use or sell anything incorporating the concepts and details disclosed by it. Such concepts and details are not to be used other than for the benefit of TELEMARK and are not to be disclosed to others without the prior written consent of an officer of TELEMARK.

<b>B</b>	SCALE 2:1	DWG NO.	REV
	SHEET 1 of 1	<b>508-3150-2</b>	<b>A</b>