

TELEMARK 528 UHV E-Beam Source Drawings

The current version of this drawing pdf can be found at

<https://telemark.com/uhv-e-beam-sources/compact-linear-uhv-sources/>

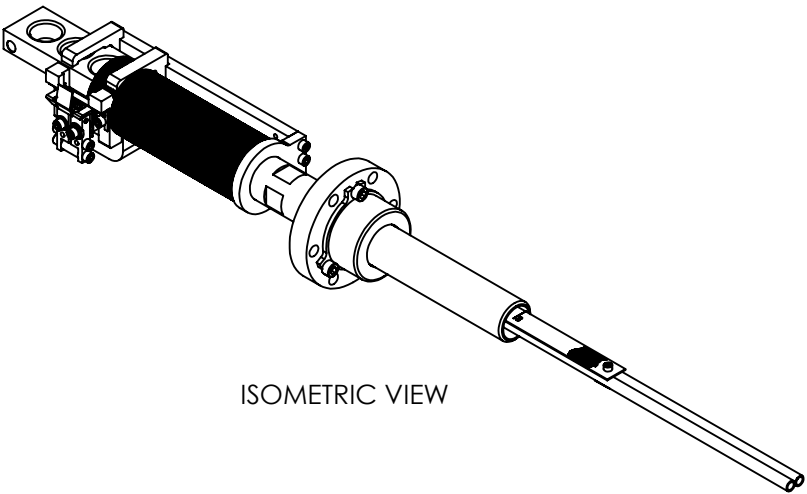
Drawing	Rev.	Description	Page
Model Assemblies			2
528-9903-1	A	Model 528-03 EB Source, 3 Pocket	3
528-9904-1	A	Model 528-04 EB Source, 4 Pocket	6
528-9905-1	A	Model 528-05 EB Source, 5 Pocket	8
528-9906-1	A	Model 528-06 EB Source, 6 Pocket	10
Common Assemblies			12
508-3150-2	A	Emitter Assembly	13



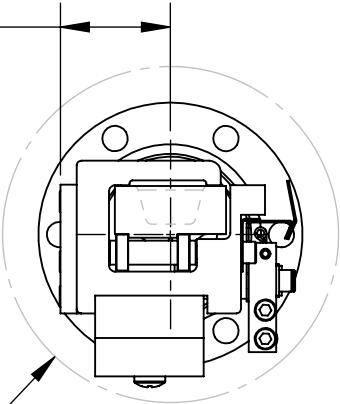
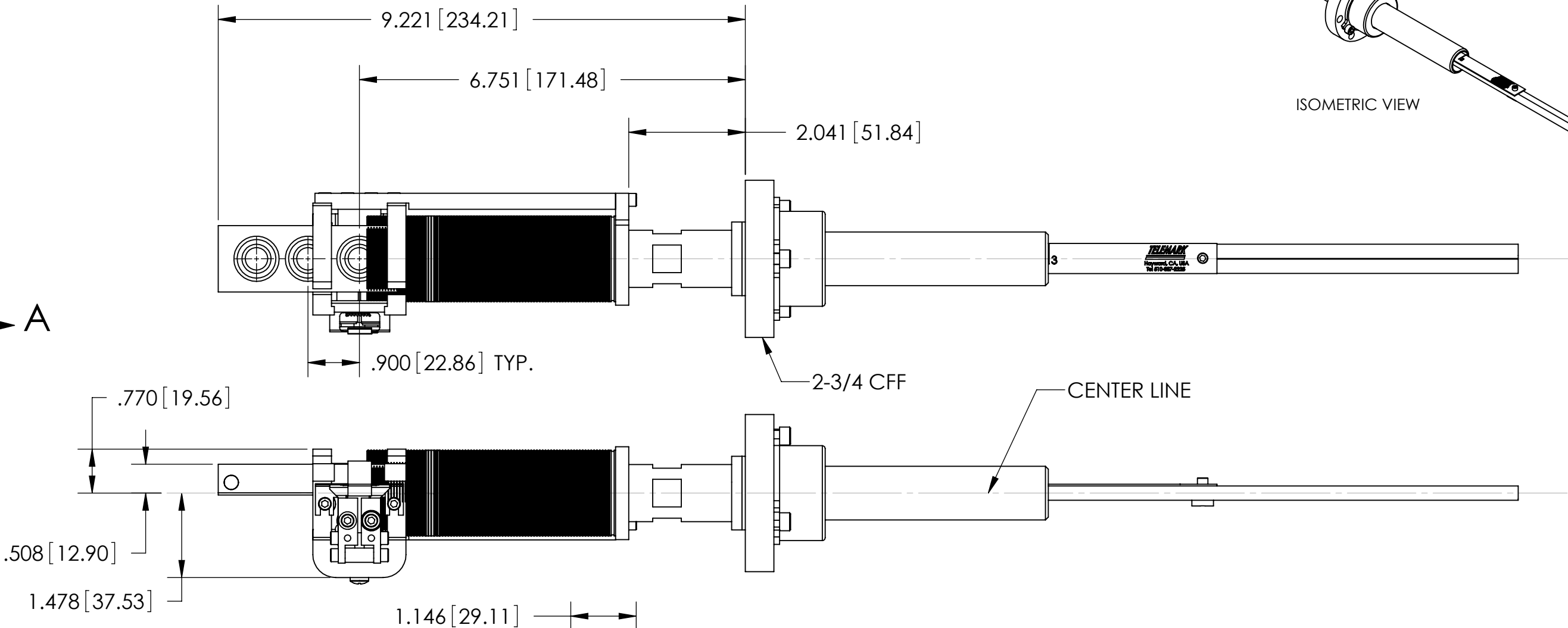
Model Assemblies

E-Beam Sources

REVISIONS				
ZONE	REV.	DESCRIPTION	DATE	APPROVED
	A	PRODUCTION RELEASE	10/2/05	



ISOMETRIC VIEW

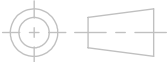


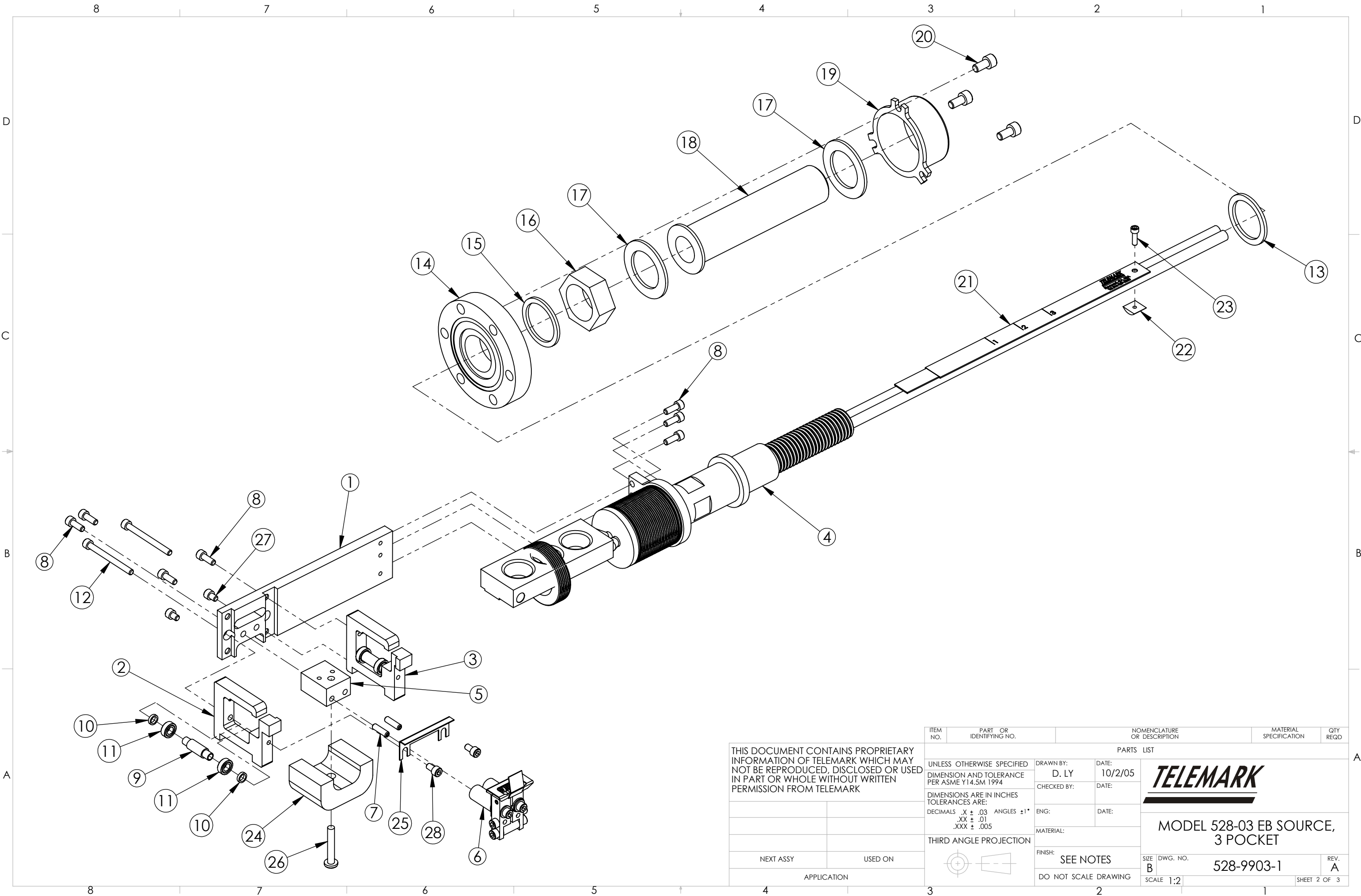
Ø 3.500 [88.90]
CLEAR DIA

VIEW A-A

THIS DOCUMENT CONTAINS PROPRIETARY INFORMATION OF TELEMAR WHICH MAY NOT BE REPRODUCED, DISCLOSED OR USED IN PART OR WHOLE WITHOUT WRITTEN PERMISSION FROM TELEMAR


NEXT ASSY	USED ON
APPLICATION	

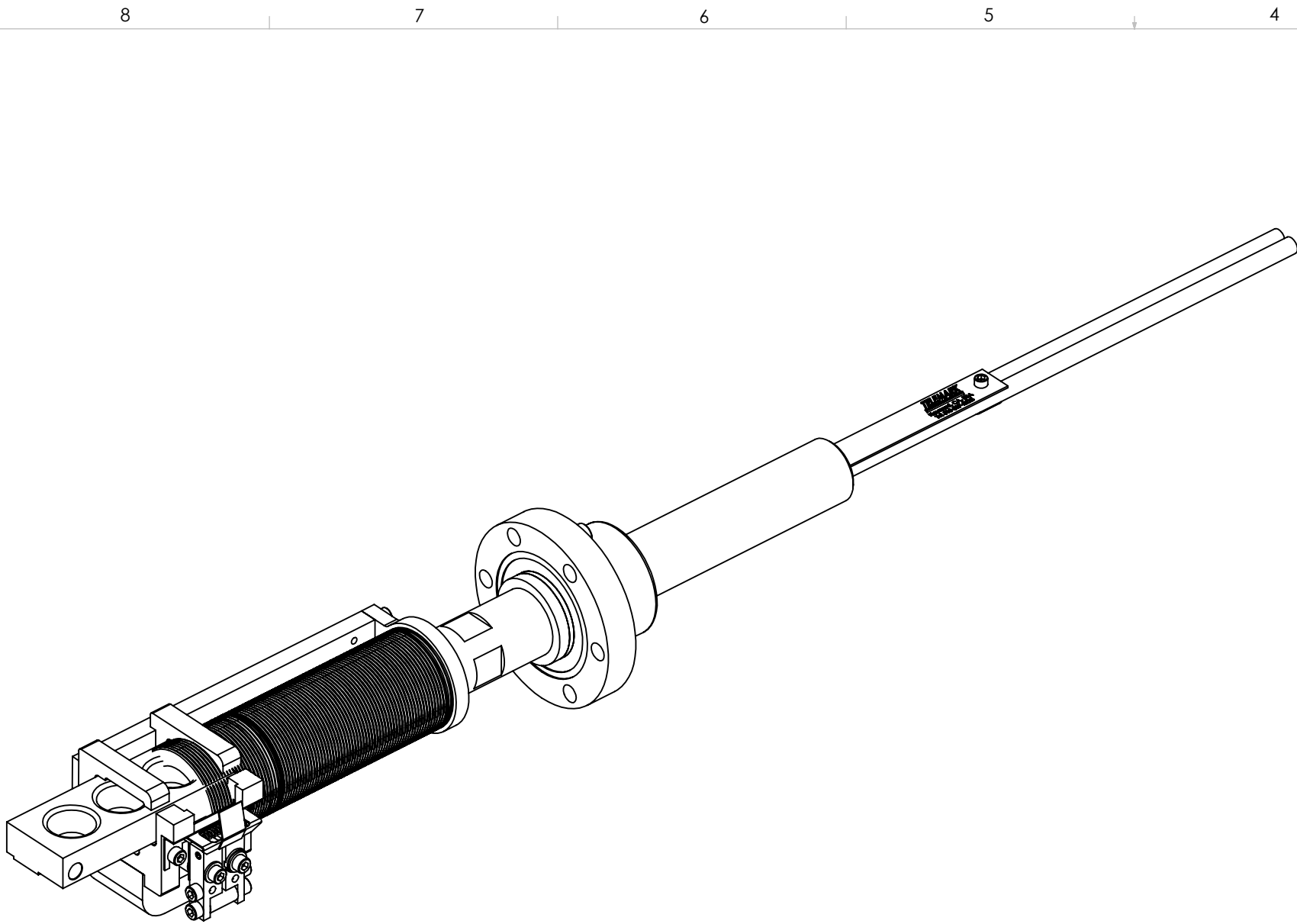
ITEM NO.	PART OR IDENTIFYING NO.	NOMENCLATURE OR DESCRIPTION		MATERIAL SPECIFICATION	QTY REQD
PARTS LIST					
UNLESS OTHERWISE SPECIFIED DIMENSION AND TOLERANCE PER ASME Y14.5M 1994		DRAWN BY: D. LY	DATE: 10/2/05	<div>TELEMARK</div> <div>MODEL 528-03 EB SOURCE, 3 POCKET</div>	
DIMENSIONS ARE IN INCHES TOLERANCES ARE: DECIMALS .X ± .03 ANGLES ±1° .XX ± .01 .XXX ± .005		CHECKED BY:	DATE:		
THIRD ANGLE PROJECTION		ENG:	DATE:		
		MATERIAL:			
		FINISH:	SEE NOTES		
		DO NOT SCALE DRAWING			
		SIZE B	DWG. NO. 528-9903-1	REV. A	
		SCALE 1:2	SHEET 1 OF 1		



THIS DOCUMENT CONTAINS PROPRIETARY INFORMATION OF TELEMAR WHICH MAY NOT BE REPRODUCED, DISCLOSED OR USED IN PART OR WHOLE WITHOUT WRITTEN PERMISSION FROM TELEMAR

NEXT ASSY	USED ON
APPLICATION	

ITEM NO.	PART OR IDENTIFYING NO.	NOMENCLATURE OR DESCRIPTION		MATERIAL SPECIFICATION	QTY REQD
PARTS LIST					
UNLESS OTHERWISE SPECIFIED		DRAWN BY:	DATE:	<div>TELEMARK</div>	
DIMENSION AND TOLERANCE PER ASME Y14.5M 1994		D. LY	10/2/05		
DIMENSIONS ARE IN INCHES TOLERANCES ARE:		CHECKED BY:	DATE:		
DECIMALS .X ± .03 ANGLES ±1° .XX ± .01 .XXX ± .005		ENG:	DATE:		
THIRD ANGLE PROJECTION		MATERIAL:	MODEL 528-03 EB SOURCE, 3 POCKET		
					
FINISH:		SEE NOTES	SIZE	DWG. NO.	REV.
DO NOT SCALE DRAWING			B	528-9903-1	A
			SCALE	1:2	SHEET 2 OF 3

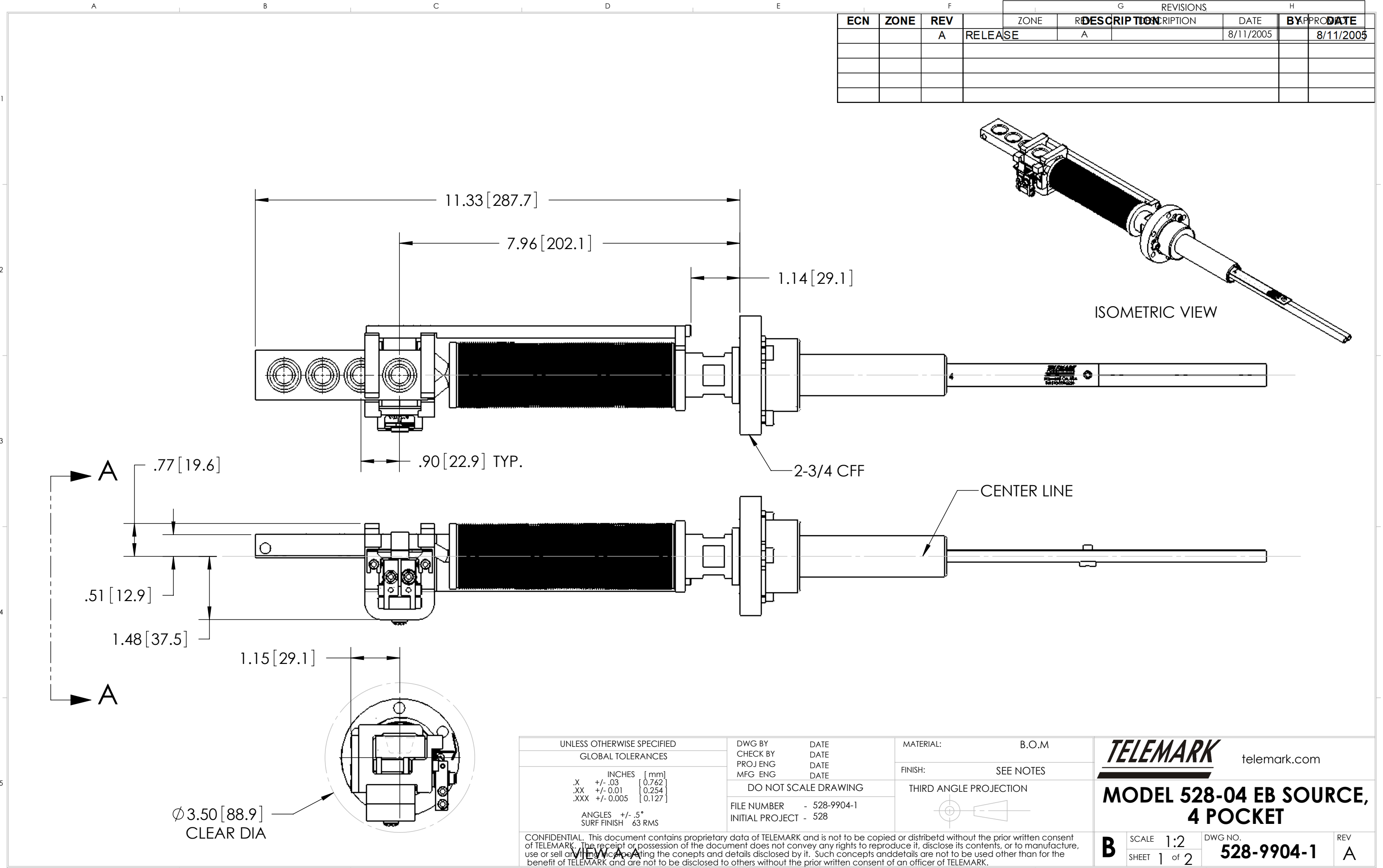


ITEM NO.	QTY.	PART NO.	DESCRIPTION
1	1	528-0214-3	BACK PLATE, 3 PKT
2	1	528-0059-2	SIDE ARM, RIGHT
3	1	528-0058-2	SIDE ARM, LEFT
4	1	528-0112-1	CRUCIBLE ASSEMBLY, 3 POCKET
5	1	528-3130-2	EMITTER STAND-OFF
6	1	508-3150-2	EMITTER ASSEMBLY
7	2	271-6199-3	Set Screw, #6-32 X 5/8" SST
8	7	271-6050-1	VENTED SCREW, #6-32 X 3/8" SST SHCS.
9	2	528-0067-1	SPACER, SIDE ARM
10	4	528-0068-1	spacer .063
11	4	528-0069-1	BEARING
12	2	271-6109-1	VENTED SCREW, #6-32 X 1-1/2" SST SHCS
13	1	271-3591-1	GASKET, CFF 2.12"
14	1	528-0225-1	CF FLANGE
15	1	528-0241-1	
16	1	528-0242-1	NUT
17	2	528-0243-1	
18	1	528-0245-1	DRIVE HANDLE. 3 PKT.
19	1	528-0244-1	COVER
20	3	271-6145-1	VENTED SCREW, #10-32 X 3/8" SST SHCS
21	1	528-0246-1	
22	1	528-0247-1	INDEX PLATE CLAMP
23	1	271-6000-1	VENTED SCREW #4-40 X 3/8" SHCS
24	1	528-0055-1	
25	1	508-3003-1	
26	1	271-6133-1	
27	2	271-6020-1	VENTED SCREW, #6-32 X 3/16" SST SHCS
28	2	271-6030-1	VENTED SCREW, #6-32 X 1/4" SST SHCS

THIS DOCUMENT CONTAINS PROPRIETARY INFORMATION OF TELEMARX WHICH MAY NOT BE REPRODUCED, DISCLOSED OR USED IN PART OR WHOLE WITHOUT WRITTEN PERMISSION FROM TELEMARX

NEXT ASSY	USED ON
APPLICATION	

ITEM NO.	PART OR IDENTIFYING NO.	NOMENCLATURE OR DESCRIPTION	MATERIAL SPECIFICATION	QTY REQD
PARTS LIST				
UNLESS OTHERWISE SPECIFIED DIMENSION AND TOLERANCE PER ASME Y14.5M 1994 DIMENSIONS ARE IN INCHES TOLERANCES ARE: DECIMALS .X ± .03 ANGLES ±1° .XX ± .01 .XXX ± .005 THIRD ANGLE PROJECTION		DRAWN BY: D. LY	DATE: 10/2/05	<div>TELEMARX</div> <div>MODEL 528-03 EB SOURCE, 3 POCKET</div>
		CHECKED BY:	DATE:	
		ENG:	DATE:	
		MATERIAL:		
		FINISH: SEE NOTES	DO NOT SCALE DRAWING	SIZE B DWG. NO. 528-9903-1 REV. A
		SCALE 1:2		SHEET 3 OF 3



			REVISIONS			
ECN	ZONE	REV	DESCRIPTION	DATE	BY	DATE
		A	RELEASE	8/11/2005		8/11/2005

ISOMETRIC VIEW

CENTER LINE

Ø 3.50 [88.9]
CLEAR DIA

UNLESS OTHERWISE SPECIFIED GLOBAL TOLERANCES		
	INCHES	[mm]
.X	+/- .03	[0.762]
.XX	+/- 0.01	[0.254]
.XXX	+/- 0.005	[0.127]
ANGLES +/- .5°		
SURF FINISH 63 RMS		

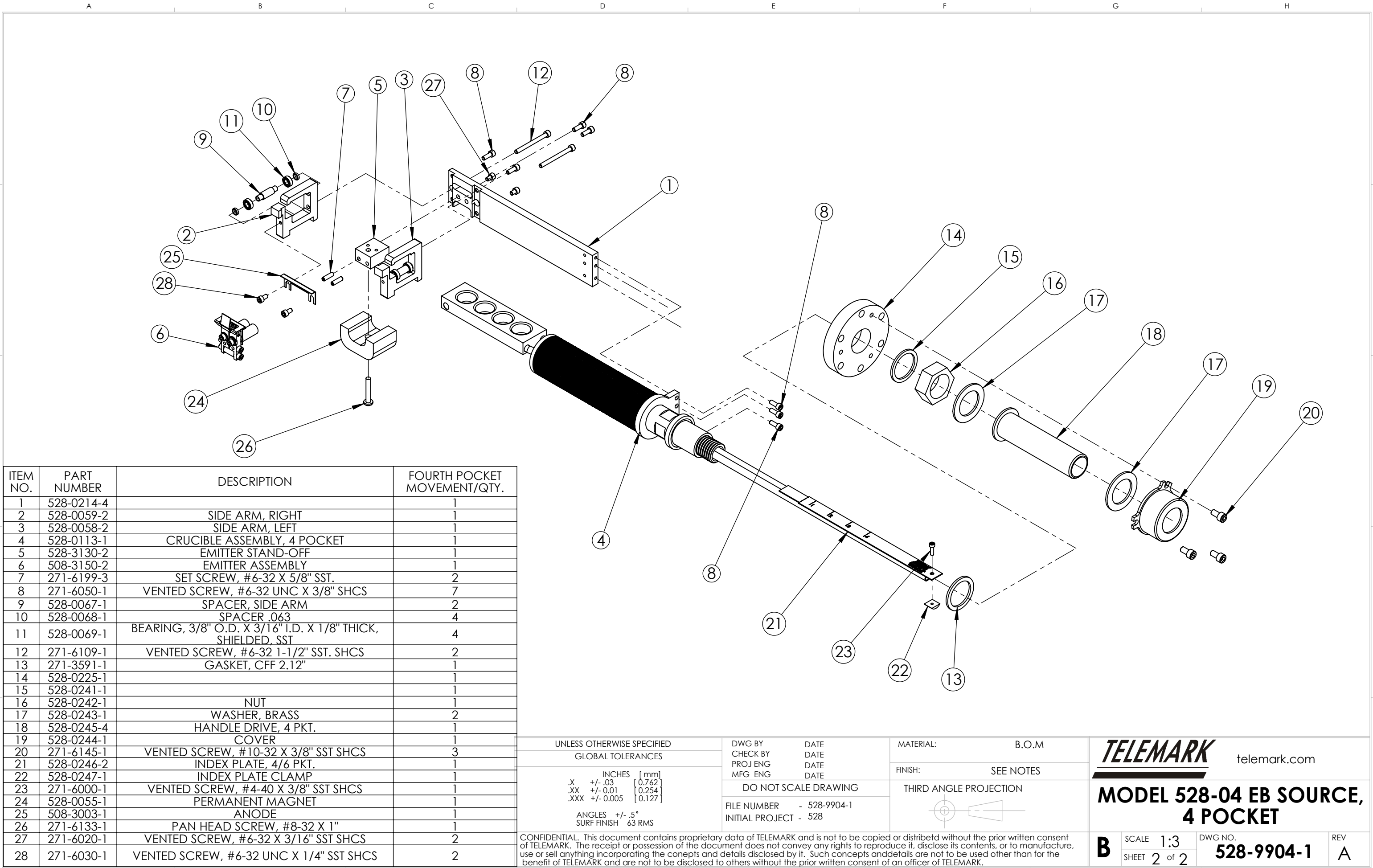
DWG BY	DATE
CHECK BY	DATE
PROJ ENG	DATE
MFG ENG	DATE
DO NOT SCALE DRAWING	
FILE NUMBER	- 528-9904-1
INITIAL PROJECT	- 528

MATERIAL:	B.O.M
FINISH:	SEE NOTES
THIRD ANGLE PROJECTION	

TELEMARK telemark.com

**MODEL 528-04 EB SOURCE,
4 POCKET**

B	SCALE	1:2	DWG NO. 528-9904-1	REV A
	SHEET	1 of 2		



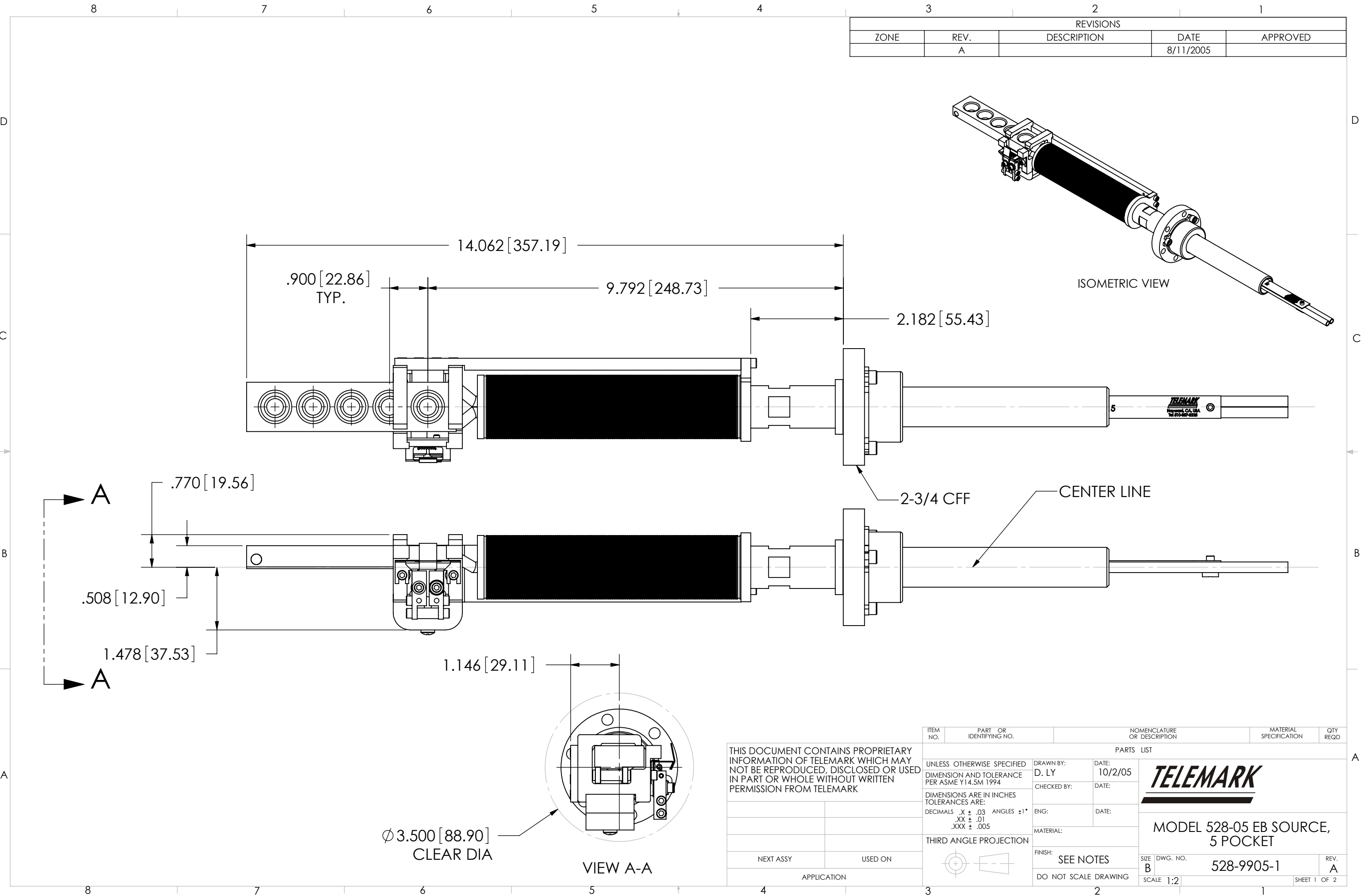
ITEM NO.	PART NUMBER	DESCRIPTION	FOURTH POCKET MOVEMENT/QTY.
1	528-0214-4		1
2	528-0059-2	SIDE ARM, RIGHT	1
3	528-0058-2	SIDE ARM, LEFT	1
4	528-0113-1	CRUCIBLE ASSEMBLY, 4 POCKET	1
5	528-3130-2	EMITTER STAND-OFF	1
6	508-3150-2	EMITTER ASSEMBLY	1
7	271-6199-3	SET SCREW, #6-32 X 5/8" SST.	2
8	271-6050-1	VENTED SCREW, #6-32 UNC X 3/8" SHCS	7
9	528-0067-1	SPACER, SIDE ARM	2
10	528-0068-1	SPACER, 063	4
11	528-0069-1	BEARING, 3/8" O.D. X 3/16" I.D. X 1/8" THICK, SHIELDED, SST	4
12	271-6109-1	VENTED SCREW, #6-32 1-1/2" SST. SHCS	2
13	271-3591-1	GASKET, CFF 2.12"	1
14	528-0225-1		1
15	528-0241-1		1
16	528-0242-1	NUT	1
17	528-0243-1	WASHER, BRASS	2
18	528-0245-4	HANDLE DRIVE, 4 PKT.	1
19	528-0244-1	COVER	1
20	271-6145-1	VENTED SCREW, #10-32 X 3/8" SST SHCS	3
21	528-0246-2	INDEX PLATE, 4/6 PKT.	1
22	528-0247-1	INDEX PLATE CLAMP	1
23	271-6000-1	VENTED SCREW, #4-40 X 3/8" SST SHCS	1
24	528-0055-1	PERMANENT MAGNET	1
25	508-3003-1	ANODE	1
26	271-6133-1	PAN HEAD SCREW, #8-32 X 1"	1
27	271-6020-1	VENTED SCREW, #6-32 X 3/16" SST SHCS	2
28	271-6030-1	VENTED SCREW, #6-32 UNC X 1/4" SST SHCS	2

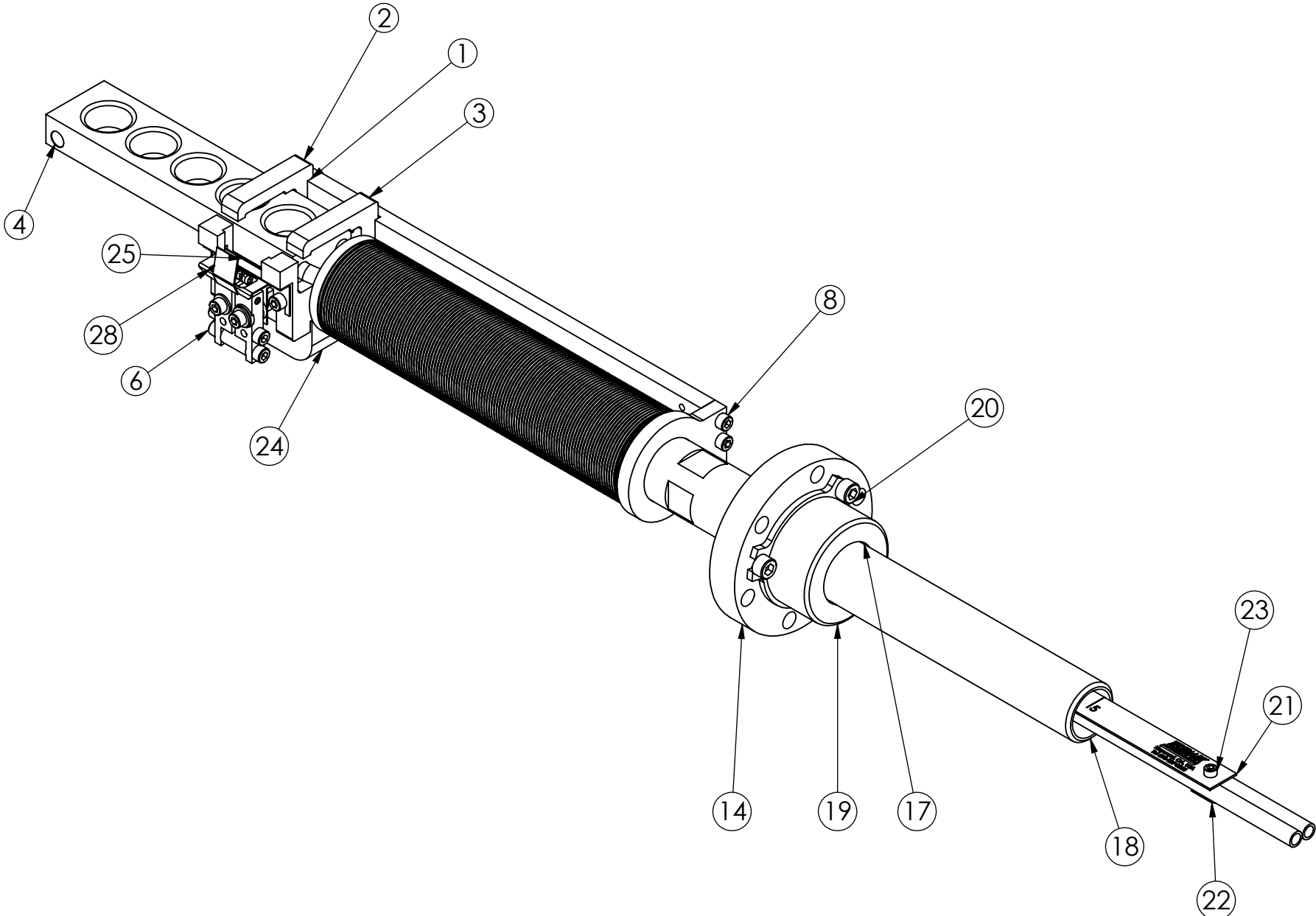
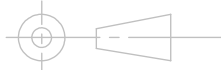
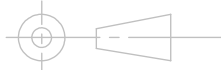
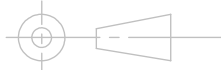
UNLESS OTHERWISE SPECIFIED GLOBAL TOLERANCES		DWG BY CHECK BY PROJ ENG MFG ENG	DATE DATE DATE DATE	MATERIAL: B.O.M	TELEMARK telemark.com
INCHES [mm] .X +/- .03 [0.762] .XX +/- 0.01 [0.254] .XXX +/- 0.005 [0.127]		DO NOT SCALE DRAWING		FINISH: SEE NOTES	
ANGLES +/- .5° SURF FINISH 63 RMS		FILE NUMBER - 528-9904-1 INITIAL PROJECT - 528		THIRD ANGLE PROJECTION	

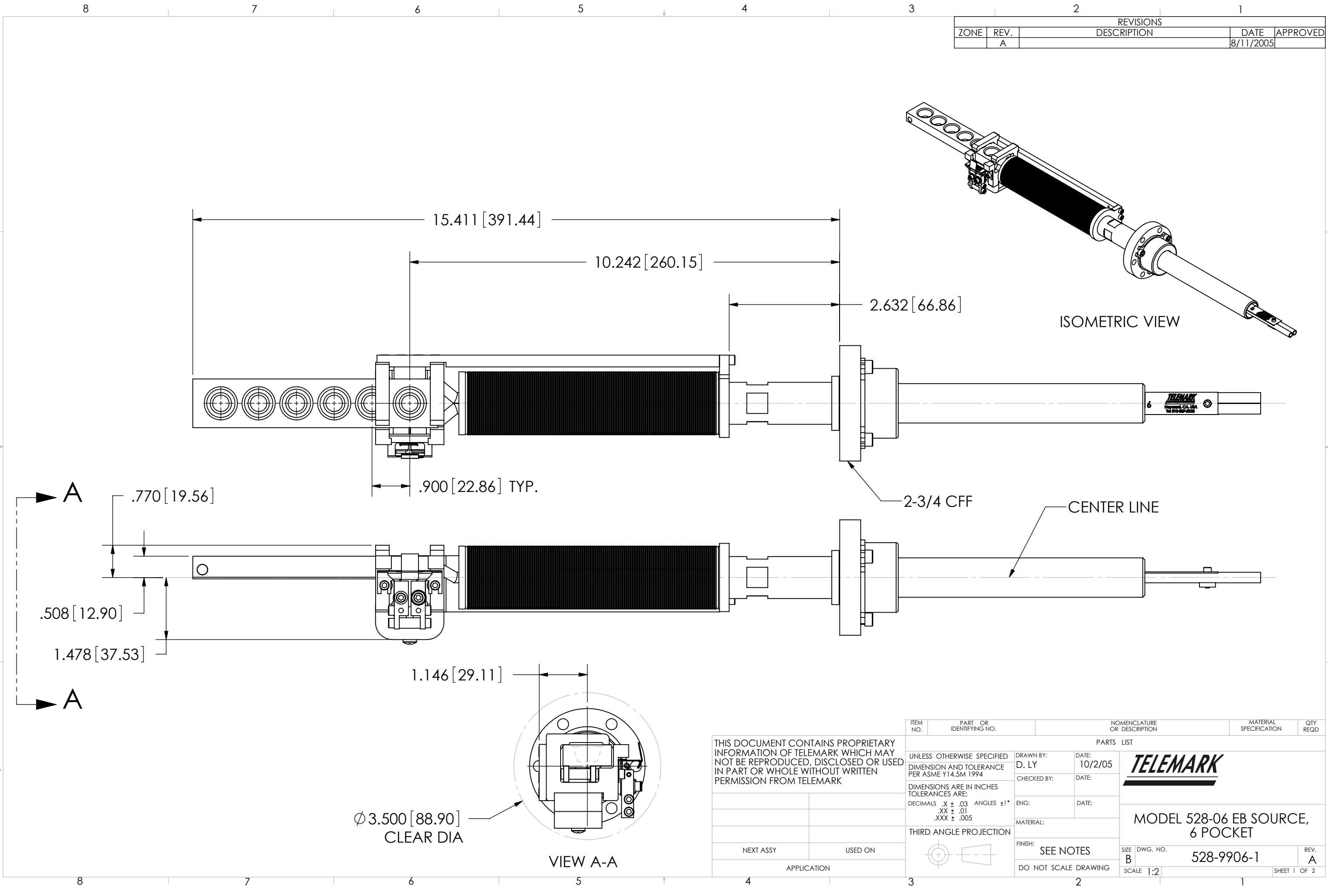
MODEL 528-04 EB SOURCE, 4 POCKET

B	SCALE 1:3	DWG NO.	REV
	SHEET 2 of 2	528-9904-1	A

CONFIDENTIAL. This document contains proprietary data of TELEMARK and is not to be copied or distribetd without the prior written consent of TELEMARK. The receipt or possession of the document does not convey any rights to reproduce it, disclose its contents, or to manufacture, use or sell anything incorporating the conepts and details disclosed by it. Such concepts andndetails are not to be used other than for the benefit of TELEMARK and are not to be disclosed to others without the prior written consent of an officer of TELEMARK.



	A	B	C	D	E	F	G	H																																			
1	ITEM NO.	PART NUMBER	DESCRIPTION	#5 POCKET MOVEMENT/ QTY.																																							
	1	528-0214-5	BACK PLATE, 5/6 PKT.	1																																							
	2	528-0059-2	SIDE ARM, RIGHT	1																																							
	3	528-0058-2	SIDE ARM, LEFT	1																																							
	4	528-0114-1	CRUCIBLE ASSEMBLY, 5 POCKET	1																																							
	5	528-3130-2	EMITTER STAND-OFF	1																																							
	6	508-3150-2	EMITTER ASSEMBLY	1																																							
2	7	271-6199-3	SET SCREW, #6-32 X 5/8" SST.	2																																							
	8	271-6050-1	VENTED SCREW, #6-32 UNC X 3/8" SHCS	7																																							
	9	528-0067-1	SPACER, SIDE ARM	2																																							
	10	528-0068-1	SPACER .063	4																																							
	11	528-0069-1	BEARING, 3/8" O.D. X 3/16" I.D. X 1/8" THICK, SHIELDED, SST	4																																							
	12	271-6109-1	VENTED SCREW, #6-32 1-1/2" SST. SHCS	2																																							
3	13	271-3591-1	GASKET, CFF 2.12"	1																																							
	14	528-0225-1		1																																							
	15	528-0241-1		1																																							
	16	528-0242-1	NUT	1																																							
	17	528-0243-1	WASHER, BRASS	2																																							
	18	528-0245-5	DRIVE HANDLE. 4/5 POCKET	1																																							
	19	528-0244-1	COVER	1																																							
4	20	271-6145-1	VENTED SCREW, #10-32 X 3/8" SST SHCS	3																																							
	21	528-0246-1	INDEX PLATE, 3/5 PKT.	1																																							
	22	528-0247-1	INDEX PLATE CLAMP	1																																							
	23	271-6000-1	VENTED SCREW, #4-40 X 3/8" SST SHCS	1																																							
	24	528-0055-1	PERMANENT MAGNET	1																																							
	25	508-3003-1	ANODE	1																																							
5	26	271-6133-1	PAN HEAD SCREW, #8-32 X 1"	1																																							
	27	271-6020-1	VENTED SCREW, #6-32 X 3/16" SST SHCS	2																																							
	28	271-6030-1	VENTED SCREW, #6-32 UNC X 1/4" SST SHCS	2																																							
				<table><tr><td colspan="2">UNLESS OTHERWISE SPECIFIED</td><td colspan="2">DWG BY</td><td>DATE</td></tr><tr><td colspan="2">GLOBAL TOLERANCES</td><td colspan="2">CHECK BY</td><td>DATE</td></tr><tr><td colspan="2"></td><td colspan="2">PROJ ENG</td><td>DATE</td></tr><tr><td colspan="2"></td><td colspan="2">MFG ENG</td><td>DATE</td></tr><tr><td colspan="2"></td><td colspan="3">DO NOT SCALE DRAWING</td></tr><tr><td colspan="2"></td><td colspan="3">FILE NUMBER - 528-9905-1</td></tr><tr><td colspan="2"></td><td colspan="3">INITIAL PROJECT -</td></tr></table>					UNLESS OTHERWISE SPECIFIED		DWG BY		DATE	GLOBAL TOLERANCES		CHECK BY		DATE			PROJ ENG		DATE			MFG ENG		DATE			DO NOT SCALE DRAWING					FILE NUMBER - 528-9905-1					INITIAL PROJECT -		
UNLESS OTHERWISE SPECIFIED		DWG BY		DATE																																							
GLOBAL TOLERANCES		CHECK BY		DATE																																							
		PROJ ENG		DATE																																							
		MFG ENG		DATE																																							
		DO NOT SCALE DRAWING																																									
		FILE NUMBER - 528-9905-1																																									
		INITIAL PROJECT -																																									
				<table><tr><td colspan="2">INCHES [mm]</td><td colspan="2">MATERIAL:</td><td>BOM</td></tr><tr><td colspan="2">.X +/- .03 [0.762]</td><td colspan="2">FINISH:</td><td>SEE NOTES</td></tr><tr><td colspan="2">.XX +/- 0.01 [0.254]</td><td colspan="2">THIRD ANGLE PROJECTION</td><td></td></tr><tr><td colspan="2">.XXX +/- 0.005 [0.127]</td><td colspan="2"></td><td></td></tr><tr><td colspan="2">ANGLES +/- .5°</td><td colspan="2"></td><td></td></tr><tr><td colspan="2">SURF FINISH 63 RMS</td><td colspan="2" rowspan="4"></td><td></td></tr></table>					INCHES [mm]		MATERIAL:		BOM	.X +/- .03 [0.762]		FINISH:		SEE NOTES	.XX +/- 0.01 [0.254]		THIRD ANGLE PROJECTION			.XXX +/- 0.005 [0.127]					ANGLES +/- .5°					SURF FINISH 63 RMS									
INCHES [mm]		MATERIAL:		BOM																																							
.X +/- .03 [0.762]		FINISH:		SEE NOTES																																							
.XX +/- 0.01 [0.254]		THIRD ANGLE PROJECTION																																									
.XXX +/- 0.005 [0.127]																																											
ANGLES +/- .5°																																											
SURF FINISH 63 RMS																																											
				<table><tr><td colspan="4">CONFIDENTIAL. This document contains proprietary data of TELEMARK and is not to be copied or distribetd without the prior written consent of TELEMARK. The receipt or possession of the document does not convey any rights to reproduce it, disclose its contents, or to manufacture, use or sell anything incorporating the conepts and details disclosed by it. Such concepts anddetails are not to be used other than for the benefit of TELEMARK and are not to be disclosed to others without the prior written consent of an officer of TELEMARK.</td></tr></table>					CONFIDENTIAL. This document contains proprietary data of TELEMARK and is not to be copied or distribetd without the prior written consent of TELEMARK. The receipt or possession of the document does not convey any rights to reproduce it, disclose its contents, or to manufacture, use or sell anything incorporating the conepts and details disclosed by it. Such concepts anddetails are not to be used other than for the benefit of TELEMARK and are not to be disclosed to others without the prior written consent of an officer of TELEMARK.																																		
CONFIDENTIAL. This document contains proprietary data of TELEMARK and is not to be copied or distribetd without the prior written consent of TELEMARK. The receipt or possession of the document does not convey any rights to reproduce it, disclose its contents, or to manufacture, use or sell anything incorporating the conepts and details disclosed by it. Such concepts anddetails are not to be used other than for the benefit of TELEMARK and are not to be disclosed to others without the prior written consent of an officer of TELEMARK.																																											
				<table><tr><td colspan="2">TELEMARK</td><td colspan="3">telemark.com</td></tr><tr><td colspan="2"></td><td colspan="3">MODEL 528-05 EB SOURCE, 5 POCKET</td></tr><tr><td colspan="2">B</td><td>SCALE 1:2</td><td>DWG NO.</td><td>REV</td></tr><tr><td colspan="2">SHEET 2 of 2</td><td></td><td>528-9905-1</td><td>A</td></tr></table>					TELEMARK		telemark.com					MODEL 528-05 EB SOURCE, 5 POCKET			B		SCALE 1:2	DWG NO.	REV	SHEET 2 of 2			528-9905-1	A															
TELEMARK		telemark.com																																									
		MODEL 528-05 EB SOURCE, 5 POCKET																																									
B		SCALE 1:2	DWG NO.	REV																																							
SHEET 2 of 2			528-9905-1	A																																							



REVISIONS				
ZONE	REV.	DESCRIPTION	DATE	APPROVED
	A		8/11/2005	

ISOMETRIC VIEW

2-3/4 CFF

CENTER LINE

THIS DOCUMENT CONTAINS PROPRIETARY INFORMATION OF TELEMARK WHICH MAY NOT BE REPRODUCED, DISCLOSED OR USED IN PART OR WHOLE WITHOUT WRITTEN PERMISSION FROM TELEMARK

ITEM NO.	PART OR IDENTIFYING NO.	NOMENCLATURE OR DESCRIPTION	MATERIAL SPECIFICATION	QTY REQD
PARTS LIST				
UNLESS OTHERWISE SPECIFIED DIMENSION AND TOLERANCE PER ASME Y14.5M 1994		DRAWN BY: D. LY	DATE: 10/2/05	TELEMARK
DIMENSIONS ARE IN INCHES TOLERANCES ARE:		CHECKED BY:	DATE:	
DECIMALS .X \pm .03 ANGLES \pm 1°		ENG:	DATE:	
.XX \pm .01 .XXX \pm .005		MATERIAL:		
THIRD ANGLE PROJECTION		FINISH: SEE NOTES	DO NOT SCALE DRAWING	SIZE B DWG. NO. 528-9906-1 REV. A
NEXT ASSY USED ON APPLICATION		SCALE 1:2		SHEET 1 OF 2

	A	B	C	D	E	F	G	H
1								
	ITEM NO.	PART NUMBER	DESCRIPTION	#6 POCKET MOVEMENT/QTY.				
	1	528-0214-5	BACK PLATE, 5/6 PKT.	1				
	2	528-0059-2	SIDE ARM, RIGHT	1				
	3	528-0058-2	SIDE ARM, LEFT	1				
	4	528-0115-1		1				
	5	528-3130-2	EMITTER STAND-OFF	1				
2	6	508-3150-2	EMITTER ASSEMBLY	1				
	7	271-6199-3	SET SCREW, #6-32 X 5/8" SST.	2				
	8	271-6050-1	VENTED SCREW, #6-32 UNC X 3/8" SHCS	7				
	9	528-0067-1	SPACER, SIDE ARM	2				
	10	528-0068-1	SPACER .063	4				
	11	528-0069-1	BEARING, 3/8" O.D. X 3/16" I.D. X 1/8" THICK, SHIELDED, SST	4				
	12	271-6109-1	VENTED SCREW, #6-32 1-1/2" SST. SHCS	2				
3	13	271-3591-1	GASKET, CFF 2.12"	1				
	14	528-0225-1		1				
	15	528-0241-1		1				
	16	528-0242-1	NUT	1				
	17	528-0243-1	WASHER, BRASS	2				
	18	528-0245-6	DRIVE HANDLE, 6PKT.	1				
	19	528-0244-1	COVER	1				
4	20	271-6145-1	VENTED SCREW, #10-32 X 3/8" SST SHCS	3				
	21	528-0246-2	INDEX PLATE, 4/6 PKT.	1				
	22	528-0247-1	INDEX PLATE CLAMP	1				
	23	271-6000-1	VENTED SCREW, #4-40 X 3/8" SST SHCS	1				
	24	528-0055-1	PERMANENT MAGNET	1				
	25	508-3003-1	ANODE	1				
5	26	271-6133-1	PAN HEAD SCREW, #8-32 X 1"	1				
	27	271-6020-1	VENTED SCREW, #6-32 X 3/16" SST SHCS	2				
	28	271-6030-1	VENTED SCREW, #6-32 UNC X 1/4" SST SHCS	2				

UNLESS OTHERWISE SPECIFIED		DWG BY	DATE	MATERIAL:	BOM	<div>TELEMARK</div> <div>telemark.com</div>
GLOBAL TOLERANCES		CHECK BY	DATE	FINISH:	SEE NOTES	
		PROJ ENG	DATE	THIRD ANGLE PROJECTION		<div>MODEL 528-06 EB SOURCE, 6 POCKET</div>
		MFG ENG	DATE			
		DO NOT SCALE DRAWING				
		FILE NUMBER	- 528-9906-1			
		INITIAL PROJECT	-			

INCHES [mm] .X +/- .03 [0.762] .XX +/- 0.01 [0.254] .XXX +/- 0.005 [0.127]		ANGLES +/- .5° SURF FINISH 63 RMS		CONFIDENTIAL. This document contains proprietary data of TELEMARK and is not to be copied or distribetd without the prior written consent of TELEMARK. The receipt or possession of the document does not convey any rights to reproduce it, disclose its contents, or to manufacture, use or sell anything incorporating the conepts and details disclosed by it. Such concepts andndetails are not to be used other than for the benefit of TELEMARK and are not to be disclosed to others without the prior written consent of an officer of TELEMARK.				
---	--	--------------------------------------	--	---	--	--	--	--

B	SCALE	1:2	DWG NO.	528-9906-1	REV	A
	SHEET	2 of 2				

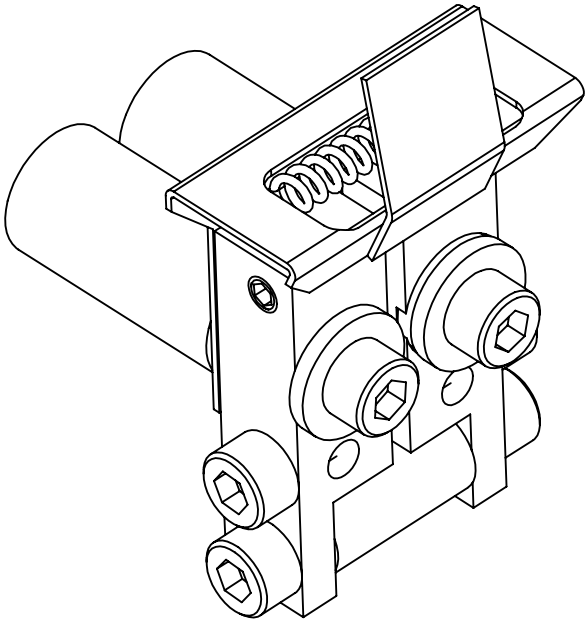
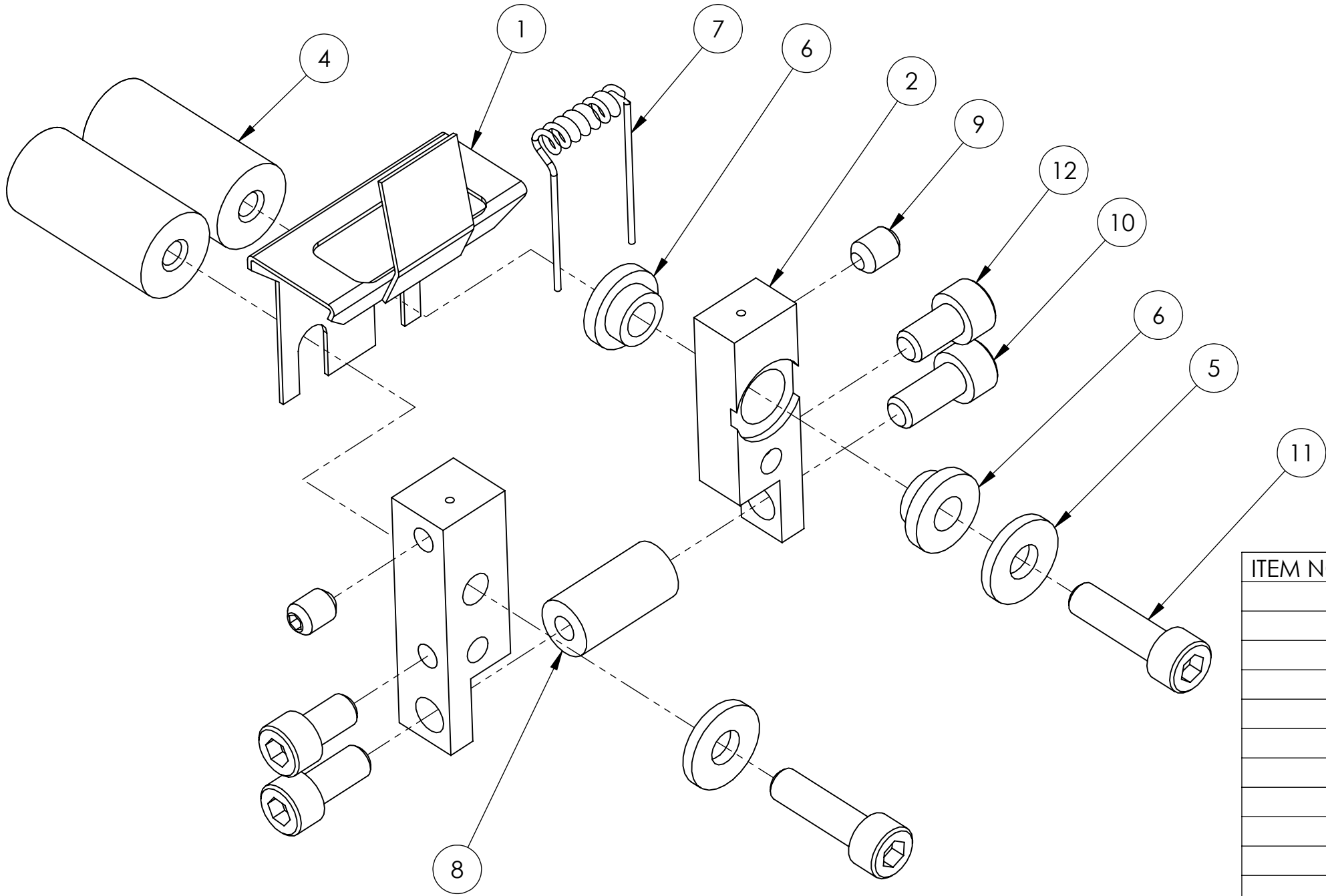


Common Assemblies

E-Beam Source

- NOTES: (UNLESS OTHERWISE SPECIFIED)
1. REMOVE BURRS & BREAK ALL SHARP EDGES
.005-.015 RAD OR CHAMF.
 2. ALL SURFACE $\sqrt{63}$
 3. BAG WITH PART NUMBER AND REVISION.

ECN	ZONE	REV	DESCRIPTION	BY	DATE
		A	RELEASE FOR PRODUCTION	D. LY	2/10/2011



ISOMETRIC VIEW

ITEM NO.	QTY.	PART NO.	DESCRIPTION
1	1	508-3006-1	BEAM FORMER ASSEMBLY
2	1	508-3032-1	CATHODE BLOCK, RIGHT
3	1	508-3031-1	CATHODE BLOCK, LEFT
4	2	273-0010-1	HV INSULATOR
5	2	271-6242-1	FLAT WASHER, #6 SST.
6	2	273-0006-1	INSULATOR, COLLAR
7	1	508-3001-1	FILAMENT, 7 TURN
8	1	508-3009-1	MIDDLE INSULATOR
9	2	271-6211-1	SET SCREW, #6-32 X 3/16 SST
10	2	271-6040-1	VENTED SCREW, #6-32 X 5/16 SST SHCS
11	2	271-6060-1	VENTED SCREW, #6-32 X 1/2" SST SHCS
12	2	271-6030-1	VENTED SCREW, #6-32 X 1/4" SST SHCS

UNLESS OTHERWISE SPECIFIED		DWG BY D. LY DATE 2/10/11		MATERIAL: B.O.M		<div><div>TELEMARK</div><div>1801 SE Commerce Ave Battle Ground, WA 98604</div></div>	
GLOBAL TOLERANCES		CHECK BY PROJ ENG MFG ENG		DATE DATE DATE			
INCHES [mm] .X +/- .03 [0.762] .XX +/- 0.01 [0.254] .XXX +/- 0.005 [0.127] ANGLES +/- .5° SURF FINISH 63 RMS		DO NOT SCALE DRAWING		THIRD ANGLE PROJECTION		<div>EMITTER ASSEMBLY</div>	
		FILE NUMBER - 508-3150-2 INITIAL PROJECT -					
<div>CONFIDENTIAL. This document contains proprietary data of TELEMARK and is not to be copied or distributed without the prior written consent of TELEMARK. The receipt or possession of the document does not convey any rights to reproduce it, disclose its contents, or to manufacture, use or sell anything incorporating the concepts and details disclosed by it. Such concepts and details are not to be used other than for the benefit of TELEMARK and are not to be disclosed to others without the prior written consent of an officer of TELEMARK.</div>							
B		SCALE 2:1		DWG NO.		REV	
		SHEET 1 of 1		508-3150-2		A	