

TELEMARK 578 UHV E-Beam Source Drawings

The current version of this drawing pdf can be found at
<https://telemark.com/uhv-e-beam-sources/uhv-sources/>

Drawing	Rev.	Description	Page
Reference Dimensions			2
R578-0001	B	Model 578 E-Beam Source Dimensions	3
Model Assemblies			4
578-9903-1	G	Model 578-03 EB Source, Linear, 4pkt, 40cc	5
578-9904-1	E	Model 578-04 EB Source, Linear, 4p, 25cc	6
Common Assemblies			7
273-0150-3	A	Emitter Assembly	8
397-1600-1	B	Indexer Assembly	9
397-1600-2	B	Indexer Assembly, Ex Long	10
578-0082-1	A	Insulator, Assembly	11
578-0135-2	A	578 Source Sub Assembly	12
578-0370-2	A	Shutter Assembly, Push-Pull, (14.5)	13
578-0388-1	B1	Shutter Assembly	14
578-0449-1	C	Assembly, Crucible Trolley Rail	15



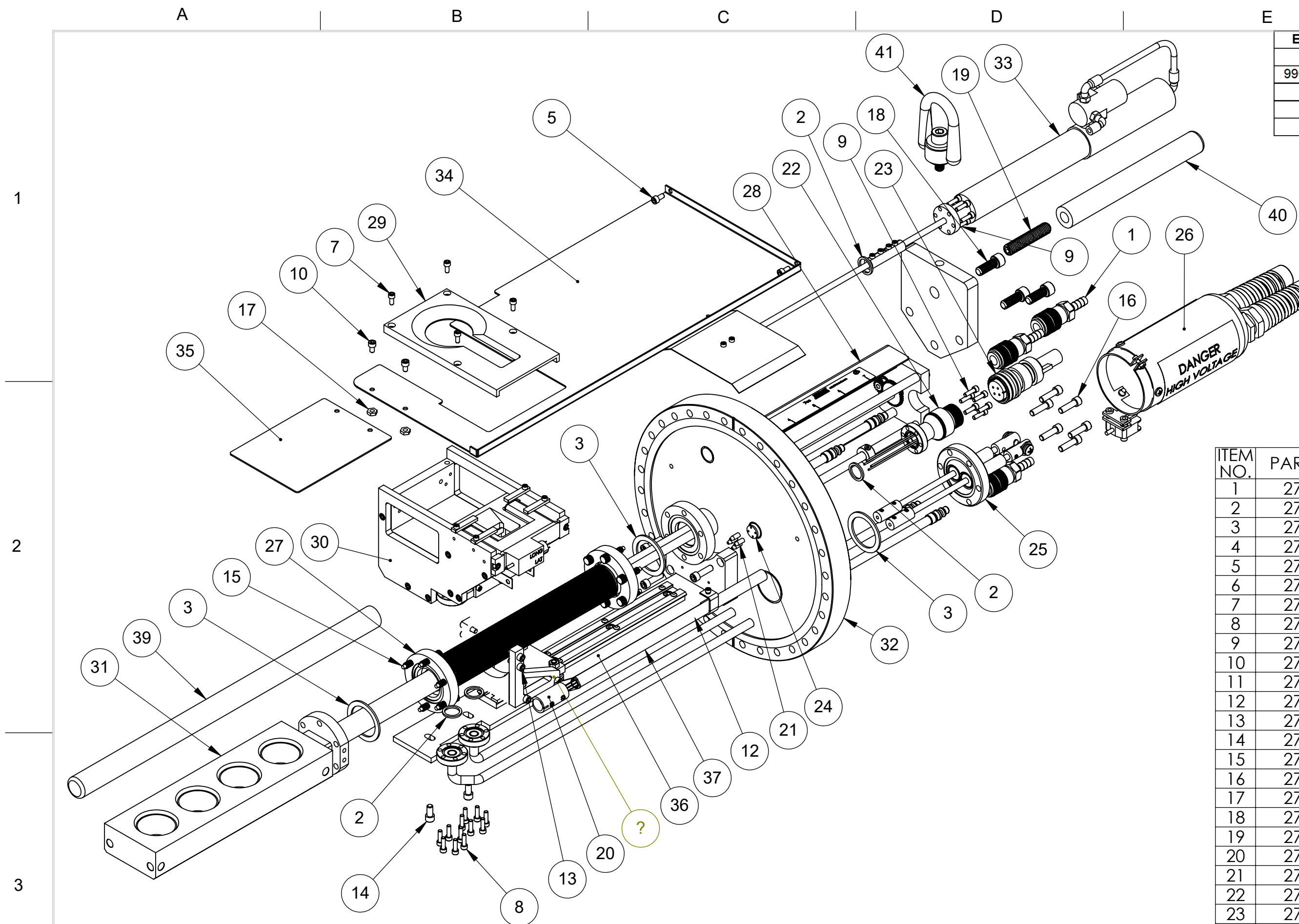
Reference Dimensions

E-Beam Source



Model Assemblies

E-Beam Sources

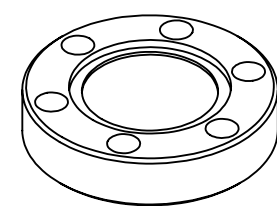


ECN	ZONE	REV	DESCRIPTION	BY	DATE
		A	RELEASE	GPD	4/22/2016
990701		B	BELLOWS FROM 568-0226-3 TO 568-0226-2	GPD	5/23/2016
		C	ADDING LIFTING HANDLES	GPD	6/8/2016
		D	REVISING DRAWING FORMAT	GPD	8/11/2016
		E	2X P/N FROM 271-6030-6 TO 271-6145-6	GPD	11/4/2016

ITEM 32 OPTIONS

PART NUMBER	DESCRIPTION
578-0301-3-3	CF FLANGE, 12"
578-0301-3-LV	CF FLANGE, 12", LEAK VENT VERTICAL
578-0301-3-S	CF FLANFE, 12", SHROUD
578-0301-3-SLV	CF FLANGE, 12", SHROUD, LEAK VENT VERTICAL

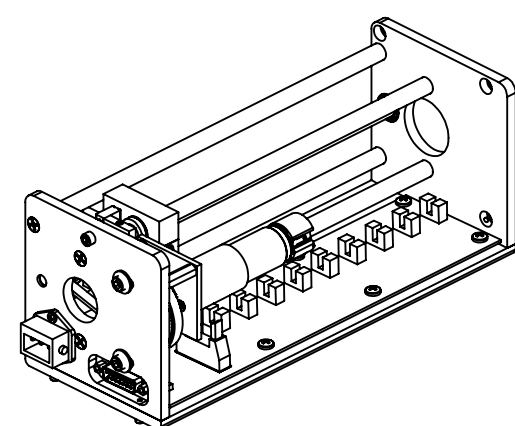
ITEM NO.	PART NUMBER	DESCRIPTION	QTY.
1	271-0676-2	QUICK CONNECT, F, 3/8" TUBE	4
2	271-3581-1	GASKET, CFF 1.33"	4
3	271-3601-1	GASKET, CFF 2.75"	3
4	271-3691-1	GASKET, CONFLAT, 12", COPPER	1
5	271-6145-6	VENTED SCREW, #10-32 X3/8"SST SHCS, SILVER	2
6	271-6030-6	VENTED SCREW, #6-32 X 1/4" SST SHCS, SILVER	1
7	271-6125-6	VENT SCREW, #8-32 X 3/8 SST SHCS, SLIVER	4
8	271-6128-6	SCREW, #8-32 X 1/2" SHCS. SILVER.	12
9	271-6132-9	SCREW, #8-32 UNC X 9/16" SHCS.	12
10	271-6140-9	SCREW, #10-32 X 5/16" SST. SHCS	2
11	271-6145-1	VENTED SCREW, #10-32 UNF X 3/8" SST SHCS	3
12	271-6186-1	VENTED SCREW, 1/4-20 X 7/8" SST SHCS	4
13	271-6170-1	VENTED SCREW, #10-32 X 5/8" SST. SHCS	4
14	271-6190-6	VENTED SCREW, #1/4-20 X 1/2 SST SHCS	2
15	271-6194-8	#1/4-28 X 1" SST 12 Pt, SILVER	12
16	271-6197-9	SCREW, 1/4-28 X 7/8" SST SHCS.	6
17	271-6255-1	NUT, #10-32 UNF, SST	2
18	271-6270-2	SCREW, CAP SOC HD, 3/8-16 UNC X 1" LONG, SST	3
19	271-6352-1	SCREW, HEX SOC SET, 1/2-13 UNC X 2-1/2" LONG, SST	1
20	272-0125-3	COIL CONNECTOR ASSY., UHV	1
21	275-0014-2	PIN CONNECTION	4
22	275-0014-3	4 PIN INSTRUMENT FEEDTHRU, CFF	1
23	275-0014-5	4 PIN CIRCULAR CONNECTOR	1
24	275-0014-6	4 PIN CERAMIC SEPERATOR	1
25	275-0019-1	DUAL PASS HV FEEDTHRU	1
26	275-0212-2	HV COVER ASSEMBLY, CFF, 2 PASS	1
27	568-0226-2	BELLOWS	1
28	575-2497-3	LINEAR DRIVE ASSEMBLY	1
29	578-0072-1	COVER, 25cc	1
30	578-0135-2	578 SOURCE SUB ASSEMBLY	1
31	578-0218-3	CRUCIBLE ASSEMBLY, 4x 25cc	1
32	578-0301-3-LV	CF FLANGE ASSEMBLY	1
33	578-0388-1	SHUTTER ASSEMBLY	1
34	578-0363-3	CRUCIBLE SHIELD, EX LONG	1
35	578-0366-1	SHIELD, EX LONG ADDITION	1
36	578-0449-1	ASSEMBLY, CRUCIBLE TROLLEY RAIL	1
37	578-0632-2	COIL LEAD SUPPORT TUBE ASSEMBLY	1
38	578-0640-1	LIFTING PLATE	1
39	578-0641-1	HANDLE, LONG	1
40	578-0641-2	HANDLE, SHORT	1
41	578-0642-1	HOIST LIFTING RING	1



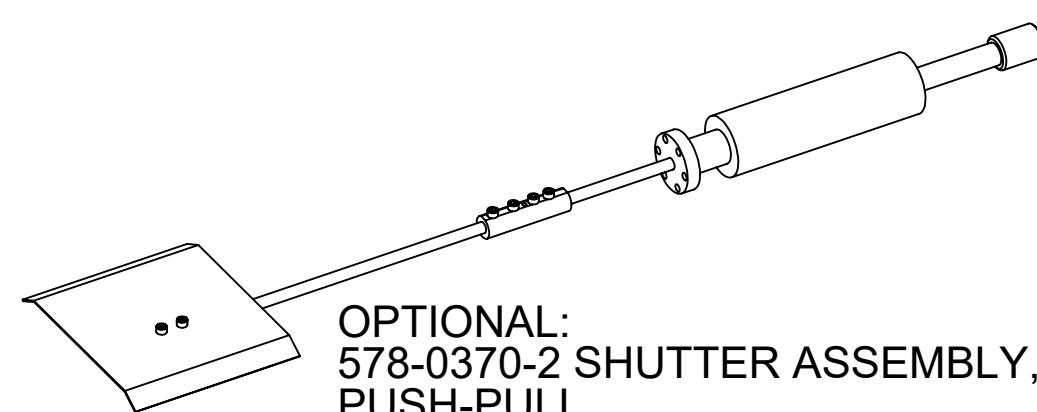
271-5133-2, 1.33 CFF BLANK
IS USED IF AN OPTIONAL
SHUTTER IS NOT INSTALLED

OPTIONAL →

SEE TABLE →
OPTIONAL →



OPTIONAL AUTO INDEXER
379-1600-1 REPLACES ITEM 28



OPTIONAL:
578-0370-2 SHUTTER ASSEMBLY,
PUSH-PULL

UNLESS OTHERWISE SPECIFIED
GLOBAL TOLERANCES

INCHES [mm]
X +/- .03 [0.762]
.XX +/- 0.01 [0.254]
.XXX +/- 0.005 [0.127]

ANGLES +/- .5°
SURF FINISH 63 RMS

DWG BY
CHECK BY
PROJ ENG
MFG ENG

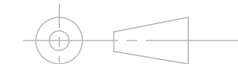
DO NOT SCALE DRAWING

FILE NUMBER - 578-9904-1
INITIAL PROJECT - 578

MATERIAL: SEE PARTS LIST

FINISH:

THIRD ANGLE PROJECTION



TELEMARK

telemark.com

MODEL 578, 4X 25cc

SCALE 1:3
SHEET 1 of 1

DWG NO.
578-9904-1

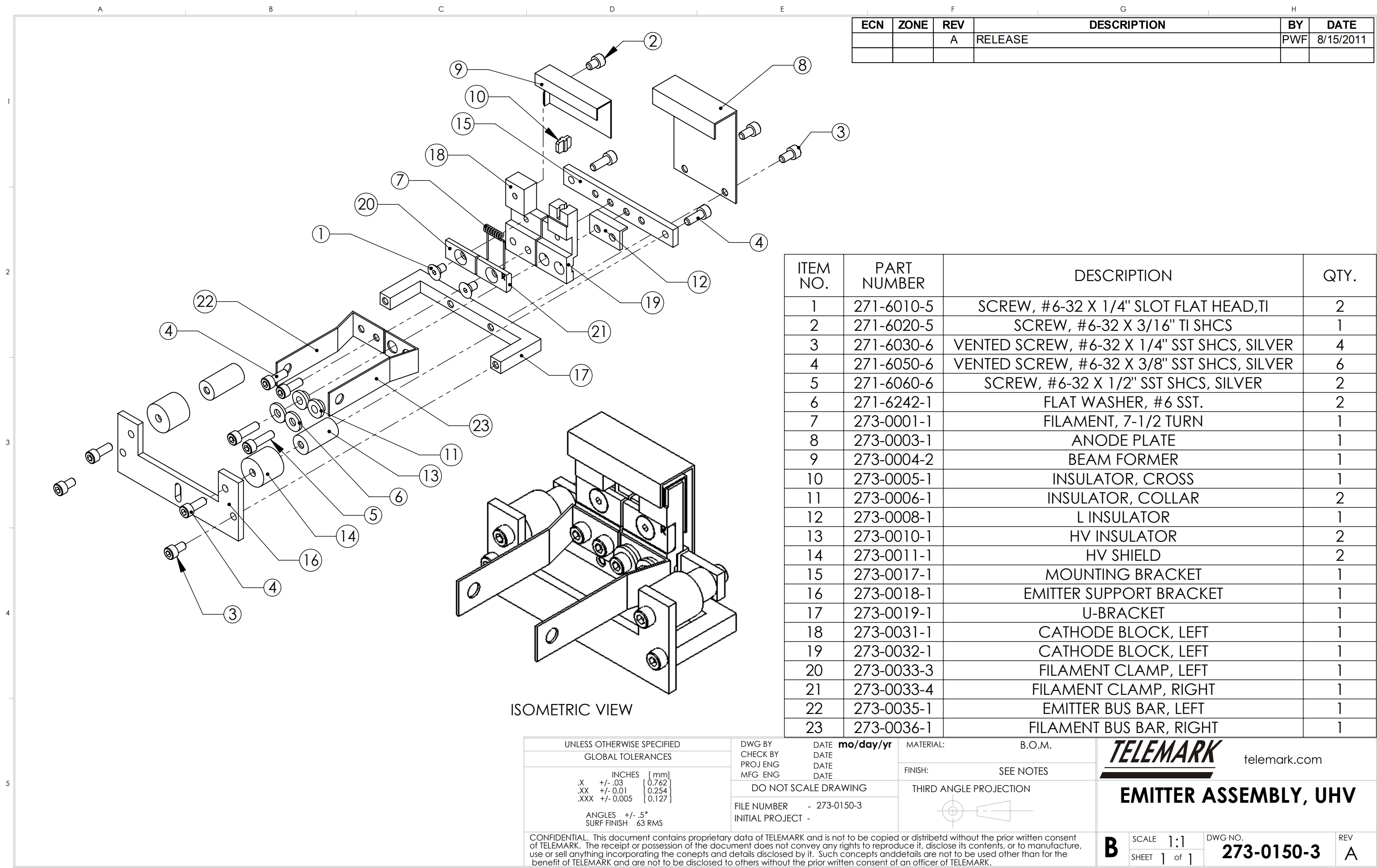
REV
E

CONFIDENTIAL. This document contains proprietary data of TELEMARK and is not to be copied or distributed without the prior written consent of TELEMARK. The receipt or possession of the document does not convey any rights to reproduce it, disclose its contents, or to manufacture, use or sell anything incorporating the concepts and details disclosed by it. Such concepts and details are not to be used other than for the benefit of TELEMARK and are not to be disclosed to others without the prior written consent of an officer of TELEMARK.



Common Assemblies

E-Beam Source



ECN	ZONE	REV	DESCRIPTION	BY	DATE
		A	RELEASE	PWF	8/15/2011

ITEM NO.	PART NUMBER	DESCRIPTION	QTY.
1	271-6010-5	SCREW, #6-32 X 1/4" SLOT FLAT HEAD,TI	2
2	271-6020-5	SCREW, #6-32 X 3/16" TI SHCS	1
3	271-6030-6	VENTED SCREW, #6-32 X 1/4" SST SHCS, SILVER	4
4	271-6050-6	VENTED SCREW, #6-32 X 3/8" SST SHCS, SILVER	6
5	271-6060-6	SCREW, #6-32 X 1/2" SST SHCS, SILVER	2
6	271-6242-1	FLAT WASHER, #6 SST.	2
7	273-0001-1	FILAMENT, 7-1/2 TURN	1
8	273-0003-1	ANODE PLATE	1
9	273-0004-2	BEAM FORMER	1
10	273-0005-1	INSULATOR, CROSS	1
11	273-0006-1	INSULATOR, COLLAR	2
12	273-0008-1	L INSULATOR	1
13	273-0010-1	HV INSULATOR	2
14	273-0011-1	HV SHIELD	2
15	273-0017-1	MOUNTING BRACKET	1
16	273-0018-1	EMITTER SUPPORT BRACKET	1
17	273-0019-1	U-BRACKET	1
18	273-0031-1	CATHODE BLOCK, LEFT	1
19	273-0032-1	CATHODE BLOCK, LEFT	1
20	273-0033-3	FILAMENT CLAMP, LEFT	1
21	273-0033-4	FILAMENT CLAMP, RIGHT	1
22	273-0035-1	EMITTER BUS BAR, LEFT	1
23	273-0036-1	FILAMENT BUS BAR, RIGHT	1

ISOMETRIC VIEW

UNLESS OTHERWISE SPECIFIED	
GLOBAL TOLERANCES	
	INCHES [mm]
.X	+/- .03 [0.762]
.XX	+/- 0.01 [0.254]
.XXX	+/- 0.005 [0.127]
ANGLES +/- .5°	
SURF FINISH 63 RMS	

DWG BY	DATE	mo/day/yr
CHECK BY	DATE	
PROJ ENG	DATE	
MFG ENG	DATE	
DO NOT SCALE DRAWING		
FILE NUMBER	- 273-0150-3	
INITIAL PROJECT	-	

MATERIAL:	B.O.M.
FINISH:	SEE NOTES
THIRD ANGLE PROJECTION	

TELEMARK
telemark.com

EMITTER ASSEMBLY, UHV

B SCALE 1:1 DWG NO. 273-0150-3 REV A
SHEET 1 of 1

CONFIDENTIAL. This document contains proprietary data of TELEMARK and is not to be copied or distributed without the prior written consent of TELEMARK. The receipt or possession of the document does not convey any rights to reproduce it, disclose its contents, or to manufacture, use or sell anything incorporating the concepts and details disclosed by it. Such concepts and details are not to be used other than for the benefit of TELEMARK and are not to be disclosed to others without the prior written consent of an officer of TELEMARK.

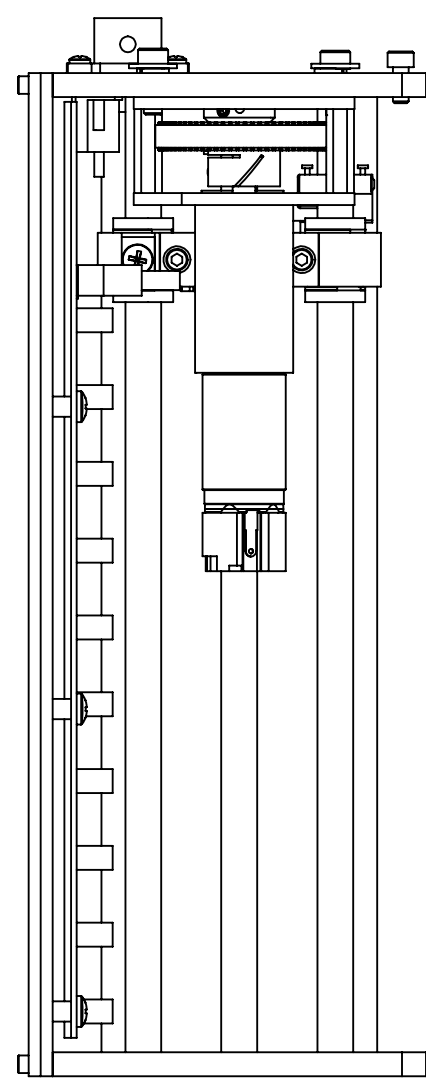
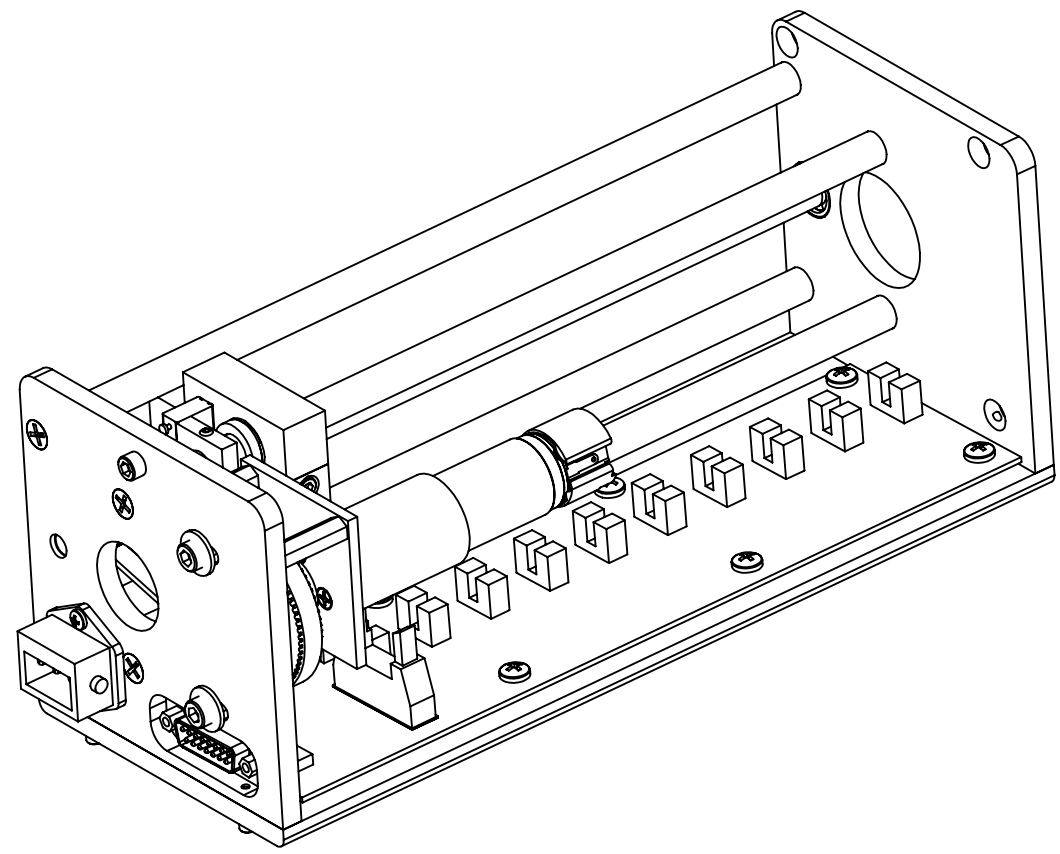
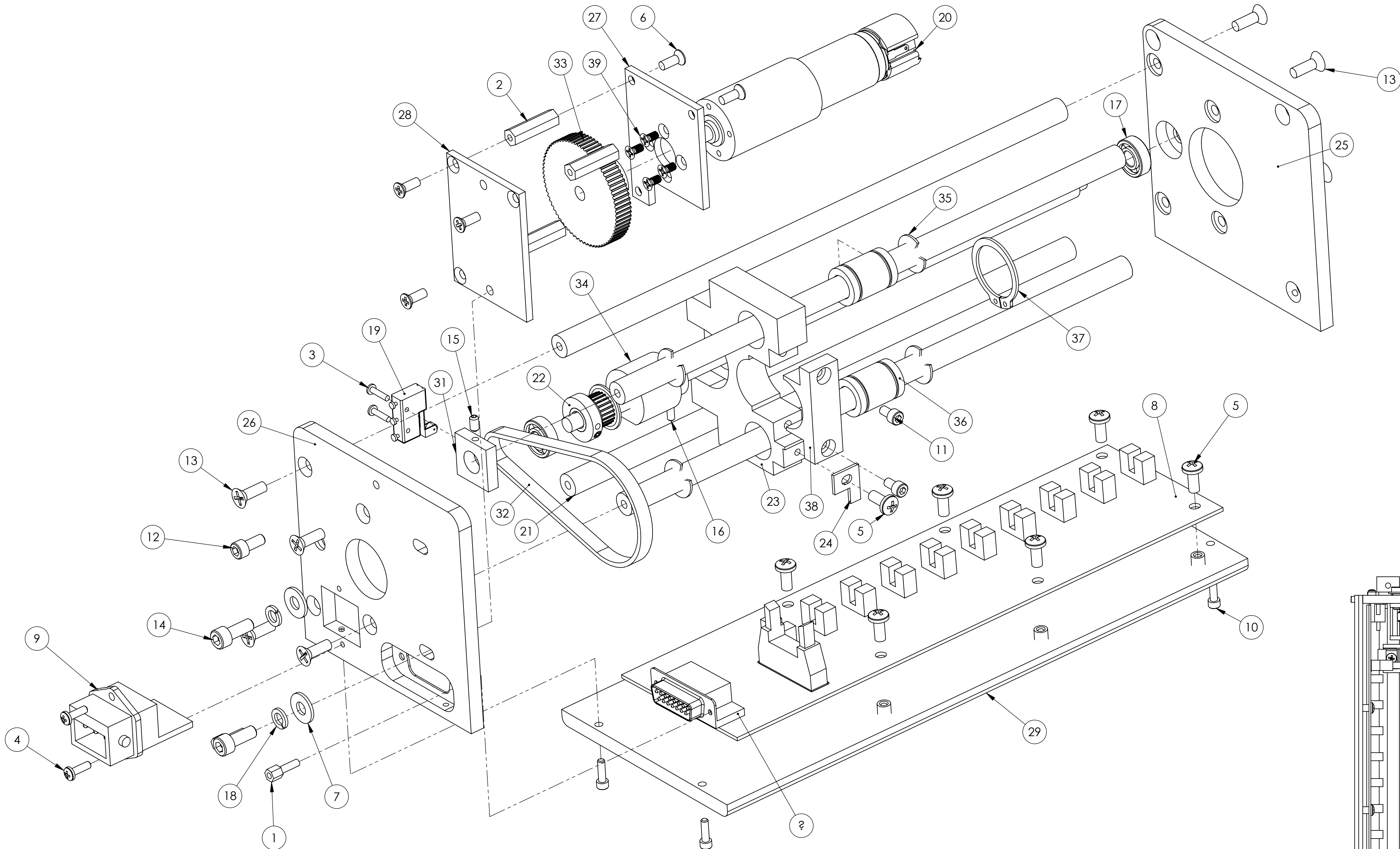
1

2

3

4

5



ECN	ZONE	REV	DESCRIPTION	BY	DATE
990712		A	RELEASE	PWF	3/4/2014
		B	UPDATE	PWF	8/2/2016

ITEM NO.	PART NUMBER	DESCRIPTION	last step/QTY.
1	110-0119-3	JACKSCREW, 4-40 X 1/4, ST, NI	2
2	110-3270-2	STANDOFF, #6-32X7/8, AL, HEX, F-F	3
3	110-4201-1	SCREW, #2-56X3/8, STEEL/ALLOY, FLAT, PHILLIPS	2
4	110-4404-1	SCREW, #4-40 X 3/8, STEEL/ZINC, PAN, PHILLIPS	2
5	110-4612-1	SCREW, #6-32 X 3/8, STEEL/ZINC, PAN, PHILLIPS, LOCK.	7
6	110-4613-1	SCREW, #6-32 X 3/8, STEEL/ZINC, FLAT, PHILIPS	6
7	110-7301-1	#10 FLAT WASHER, STEEL	2
8	120-0603-3	ASSEMBLY, PCB, MOTOR INTERFACE	1
9	124-1503-1	CHAS, HIRSCHMANN FEMALE, 3-PIN+G	1
10	271-6000-9	SCREW, #4-40 X 3/8" SST SHCS	4
11	271-6030-9	SCREW, #6-32 UNC X 1/4" SST, SHCS	2
12	271-6125-9	SCREW, #8-32 X 3/8" SST SHCS	1
13	271-6134-9	#8-32 X 1/2 PHIL FLAT HEAD	8
14	271-6150-9	SCREW, #10-32 X 1/2" SST SHCS.	2
15	271-6198-1	SET SCREW, #6-32 X 1/4" SST	1
16	271-6201-1	#4-40 X 3/8 SET SCREW	1
17	271-6219-1	BALL BEARING, 5/8 OD.	2
18	271-6245-2	LOCK WASHER, #10 SST.	2
19	376-9004-2	MICROSWITCH	1
20	396-0400-1	MOTOR, STANDARD, 396	1
21	397-1401-1	SUPPORT ROD	4
22	397-1402-2	BALL SCREW ASSEMBLY	1
23	397-1410-1	DRIVE BLOCK	1
24	397-1415-1	FLAG	1
25	397-1420-1	DRIVE ASSY. BOTTOM PLATE	1
26	397-1425-1	DRIVE ASSY. TOP PLATE	1
27	397-1435-1	MOTOR PLATE	1
28	397-1435-2	MOTOR PLATE 2	1
29	397-1450-1	OPTIC SENSOR PLATE, STD	1
30	397-1465-1	COVER, DRIVE ASSEMBLY	1
31	397-1470-1	MICROSWITCH CLAMP	1
32	397-1475-1	DRIVE BELT	1
33	397-1476-1	BELT PULLY, 72 TEETH	1
34	568-1403-1	RIGHT HAND BALL NUT	1
35	568-1405-1	RETAINER RING, 5/8"	4
36	568-1406-1	BALL BEARING, LINEAR	2
37	568-1411-2	RETAINING RING, 24mm	1
38	568-1412-1	DRIVE BLOCK, CLAMP	1
39	900-3010-601	SCREW, FLAT HD PHILLIPS, M3 x 6mm LG, SST	4

UNLESS OTHERWISE SPECIFIED
GLOBAL TOLERANCES

	INCHES	[mm]
.X	+/- .03	[0.762]
.XX	+/- .001	[0.254]
.XXX	+/- .0005	[0.127]
ANGLES	+/- .5°	
SURF FINISH	63 RMS	

DWG BY
CHECK BY
PROJ ENG
MFG ENG

DATE
DATE
DATE

DO NOT SCALE DRAWING

FILE NUMBER
INITIAL PROJECT

D. LY
3/18/11

DATE
DATE
DATE

397-1600-1

MATERIAL:
B.O.M.

FINISH:
SEE NOTES

THIRD ANGLE PROJECTION

TELEMARK
telemark.com

LINEAR DRIVE ASSEMBLY

D SCALE 1:1 DWG NO. 397-1600-1 REV B
SHEET 1 of 1

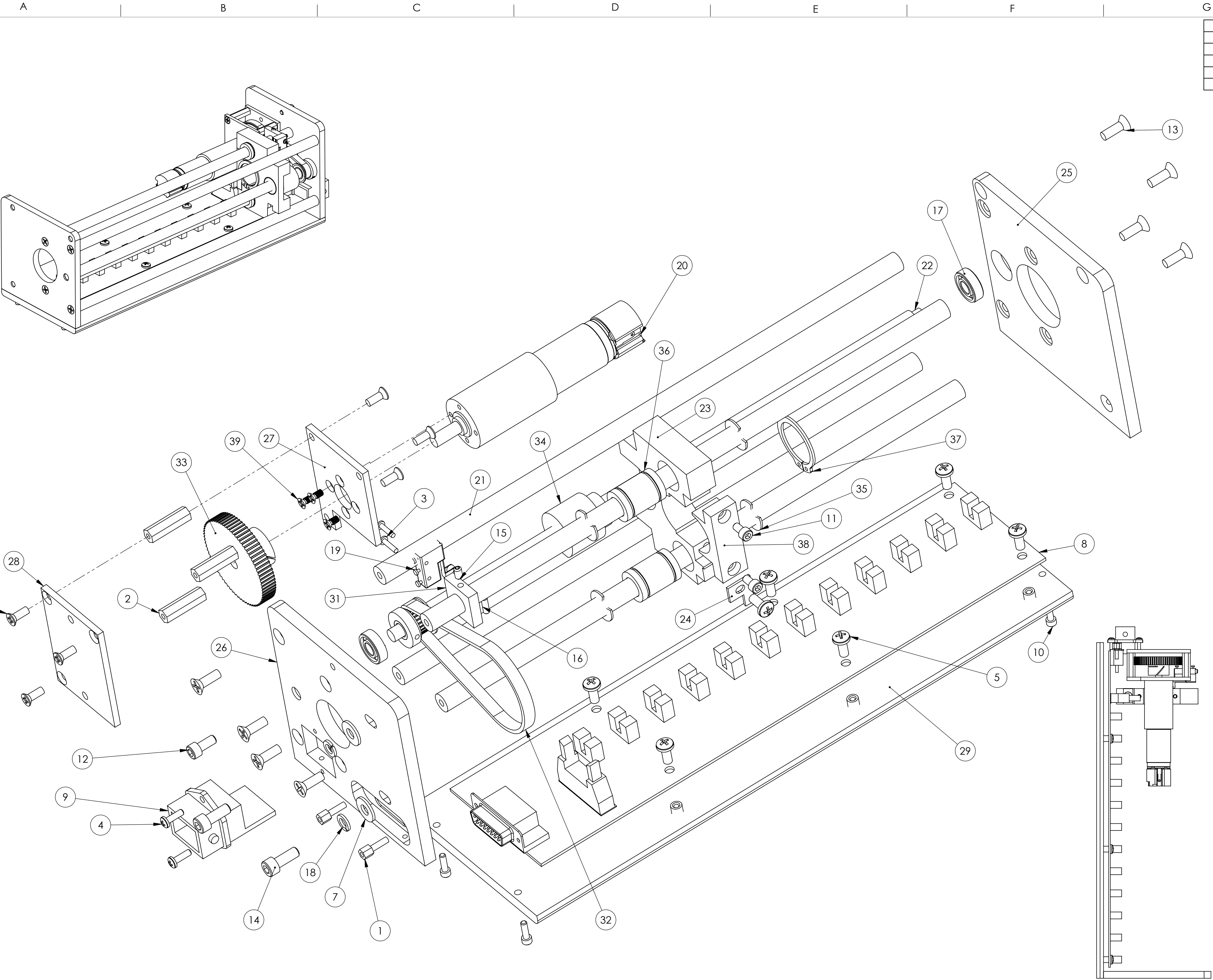
1

2

3

4

5



ECN	ZONE	REV	DESCRIPTION	BY	DATE
990712		A	RELEASE	PWF	8/3/2016
		B	UPDATE	PWF	

ITEM NO.	PART NUMBER	DESCRIPTION	last step/QTY.
1	110-0119-3	JACKSCREW, 4-40 X 1/4, ST, NI	2
2	110-3270-2	STANDOFF, #6-32X7/8, AL, HEX, F-F	3
3	110-4201-1	SCREW, #2-56X3/8, STEEL/ALLOY, FLAT, PHILLIPS	2
4	110-4404-1	SCREW, #4-40 X 3/8, STEEL/ZINC, PAN, PHILLIPS	2
5	110-4612-1	SCREW, #6-32 X 3/8, STEEL/ZINC, PAN, PHILLIPS, LOCK.	7
6	110-4613-1	SCREW, #6-32 X 3/8, STEEL/ZINC, FLAT, PHILIPS	6
7	110-7301-1	#10 FLAT WASHER, STEEL	2
8	120-0603-4	ASSEMBLY, PCB, MOTOR INTERFACE	1
9	124-1505-1	CHAS, HIRSCHMANN MALE, 5-PIN+G	1
10	271-6000-9	SCREW, #4-40 X 3/8" SST SHCS	4
11	271-6030-9	SCREW, #6-32 UNC X 1/4" SST, SHCS	2
12	271-6125-9	SCREW, #8-32 X 3/8" SST SHCS	1
13	271-6134-9	#8-32 X 1/2 PHIL FLAT HEAD	8
14	271-6150-9	SCREW, #10-32 X 1/2" SST SHCS.	2
15	271-6198-1	SET SCREW, #6-32 X 1/4" SST	1
16	271-6201-1	#4-40 X 3/8 SET SCREW	1
17	271-6219-1	BALL BEARING, 5/8 OD.	2
18	271-6245-2	LOCK WASHER, #10 SST.	2
19	376-9004-2	MICROSWITCH	1
20	396-0400-1	MOTOR, STANDARD, 396	1
21	397-1401-2	SUPPORT ROD, EX Long	4
22	397-1402-3	BALL SCREW ASSEMBLY, EX LONG	1
23	397-1410-1	DRIVE BLOCK	1
24	397-1415-1	FLAG	1
25	397-1420-1	DRIVE ASSY. BOTTOM PLATE	1
26	397-1425-1	DRIVE ASSY. TOP PLATE	1
27	397-1435-1	MOTOR PLATE	1
28	397-1435-2	MOTOR PLATE 2	1
29	397-1450-2	OPTIC SENSOR PLATE, EX LONG	1
30	397-1465-2	COVER, DRIVE ASSEMBLY, EX LONG	1
31	397-1470-1	MICROSWITCH CLAMP	1
32	397-1475-1	DRIVE BELT	1
33	397-1476-1	BELT PULLEY, 72 TEETH	1
34	568-1403-1	RIGHT HAND BALL NUT	1
35	568-1405-1	RETAINER RING, 5/8"	4
36	568-1406-1	BALL BEARING, LINEAR	2
37	568-1411-2	RETAINING RING, 24mm	1
38	568-1412-1	DRIVE BLOCK, CLAMP	1
39	900-3010-601	SCREW, FLAT HD PHILLIPS, M3 x 6mm LG, SST	4

UNLESS OTHERWISE SPECIFIED:
GLOBAL TOLERANCES

	INCHES	[mm]
.X	+/- .03	[0.762]
.XX	+/- .001	[0.254]
.XXX	+/- .0005	[0.127]

ANGLES +/- .5°
SURF FINISH 63 RMS

DWG BY
CHECK BY
PROJ ENG
MFG ENG

D. LY

DATE
DATE
DATE

3/18/11

DO NOT SCALE DRAWING
FILE NUMBER
INITIAL PROJECT

- 397-1600-2

MATERIAL:
B.O.M

SEE NOTES

THIRD ANGLE PROJECTION

TELEMARK
telemark.com

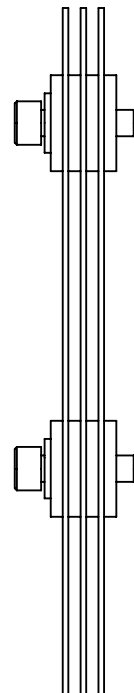
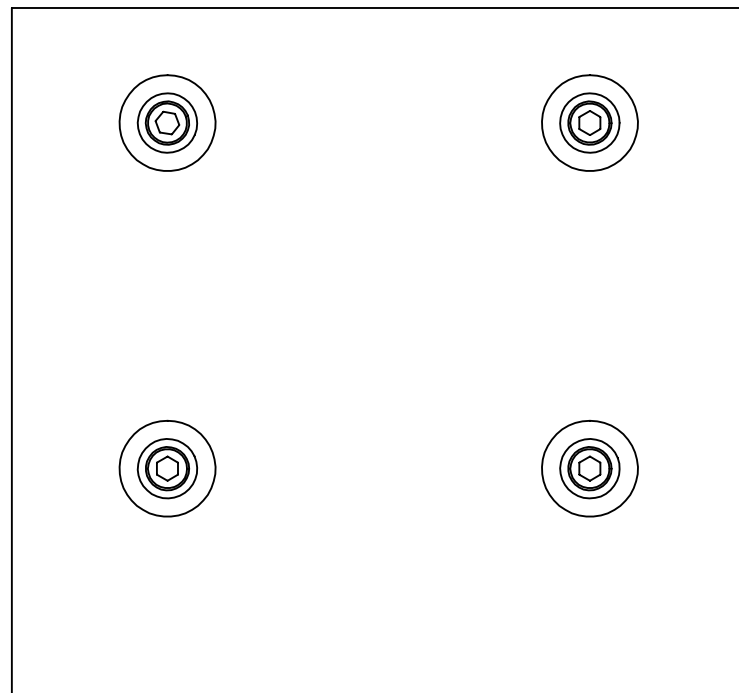
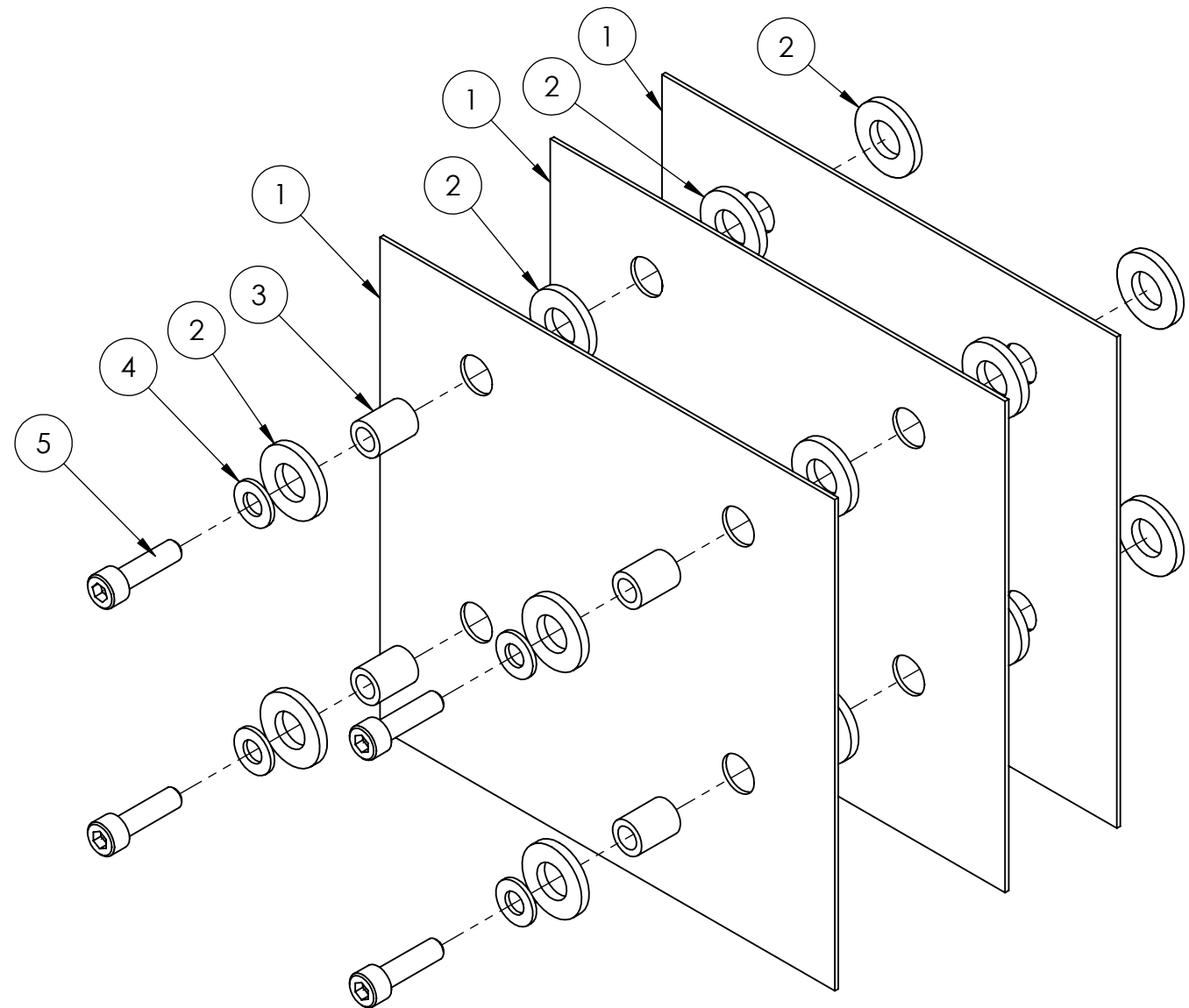
**LINEAR DRIVE
EX LONG ASSEMBLY**

SCALE **1:1**
SHEET **1** of **1**


DWG NO. **397-1600-2**

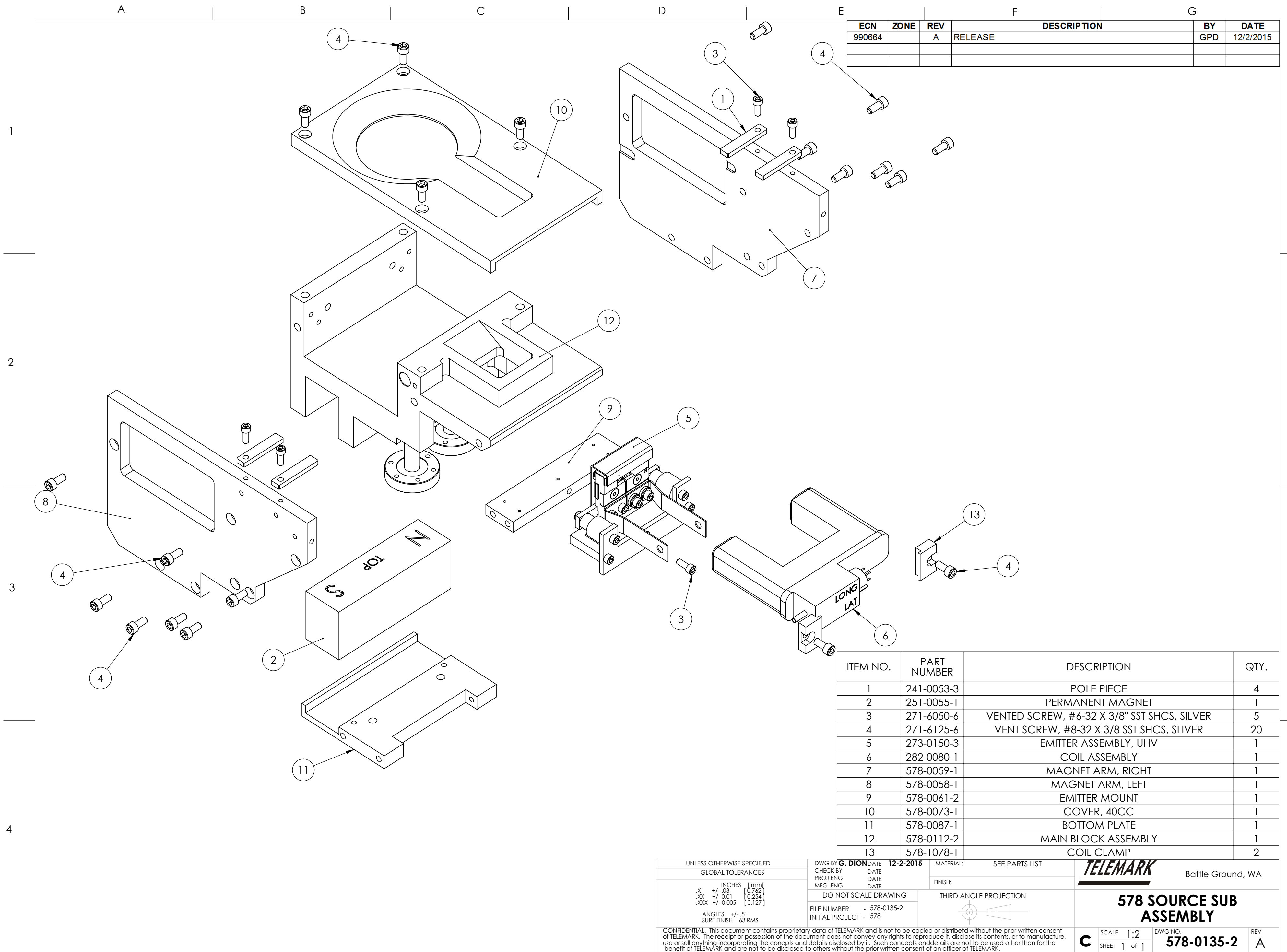
REV **B**

ECN	ZONE	REV	DESCRIPTION	BY	DATE
990664		A	RELEASE	GPD	12/2/2015



ITEM NO.	PART NUMBER	DESCRIPTION	QTY.
1	578-0080-1	MOLYBDENUM SHEILD	3
2	880-0519-1	CERAMIC INSULATION	16
3	575-0081-1	INSULATOR, SHEILD	4
4	271-6242-1	FLAT WASHER, #6 SST	4
5	271-6060-6	VENTED SCREW, #6-32 X 1/2" SST SHCS, SILVER	4

UNLESS OTHERWISE SPECIFIED		DWG BY	DATE	MATERIAL:	SEE PARTS LIST	<div><div>TELEMARK</div><div>Battle Ground, WA</div></div>
GLOBAL TOLERANCES		CHECK BY	DATE			
INCHES [mm] .X +/- .03 [0.762] .XX +/- .01 [0.254] .XXX +/- 0.005 [0.127] ANGLES +/- .5° SURF FINISH 63 RMS		PROJ ENG	DATE	FINISH:		
		MFG ENG	DATE			
		DO NOT SCALE DRAWING		THIRD ANGLE PROJECTION		<div><div>B</div><div>SCALE 1:1 SHEET 1 of 1</div></div> <div><div>DWG NO.</div><div>578-0082-1</div></div> <div><div>REV</div><div>A</div></div>
		FILE NUMBER - 578-0082-1				
		INITIAL PROJECT -				
<div>CONFIDENTIAL. This document contains proprietary data of TELEMARK and is not to be copied or distribetd without the prior written consent of TELEMARK. The receipt or possession of the document does not convey any rights to reproduce it, disclose its contents, or to manufacture, use or sell anything incorporating the conepts and details disclosed by it. Such conepts andndetails are not to be used other than for the benefit of TELEMARK and are not to be disclosed to others without the prior written consent of an officer of TELEMARK.</div>						




ECN	ZONE	REV	DESCRIPTION	BY	DATE
990664		A	RELEASE	GPD	12/2/2015

ITEM NO.	PART NUMBER	DESCRIPTION	QTY.
1	241-0053-3	POLE PIECE	4
2	251-0055-1	PERMANENT MAGNET	1
3	271-6050-6	VENTED SCREW, #6-32 X 3/8" SST SHCS, SILVER	5
4	271-6125-6	VENT SCREW, #8-32 X 3/8 SST SHCS, SLIVER	20
5	273-0150-3	EMITTER ASSEMBLY, UHV	1
6	282-0080-1	COIL ASSEMBLY	1
7	578-0059-1	MAGNET ARM, RIGHT	1
8	578-0058-1	MAGNET ARM, LEFT	1
9	578-0061-2	EMITTER MOUNT	1
10	578-0073-1	COVER, 40CC	1
11	578-0087-1	BOTTOM PLATE	1
12	578-0112-2	MAIN BLOCK ASSEMBLY	1
13	578-1078-1	COIL CLAMP	2

UNLESS OTHERWISE SPECIFIED GLOBAL TOLERANCES	
INCHES	[mm]
X +/- .03	[0.762]
.XX +/- .01	[0.254]
.XXX +/- .005	[0.127]
ANGLES +/- .5°	
SURF FINISH	63 RMS

DWG BY: G. DION	DATE: 12-2-2015
CHECK BY:	DATE:
PROJ ENG	DATE:
MFG ENG	DATE:
DO NOT SCALE DRAWING	
FILE NUMBER	- 578-0135-2
INITIAL PROJECT	- 578

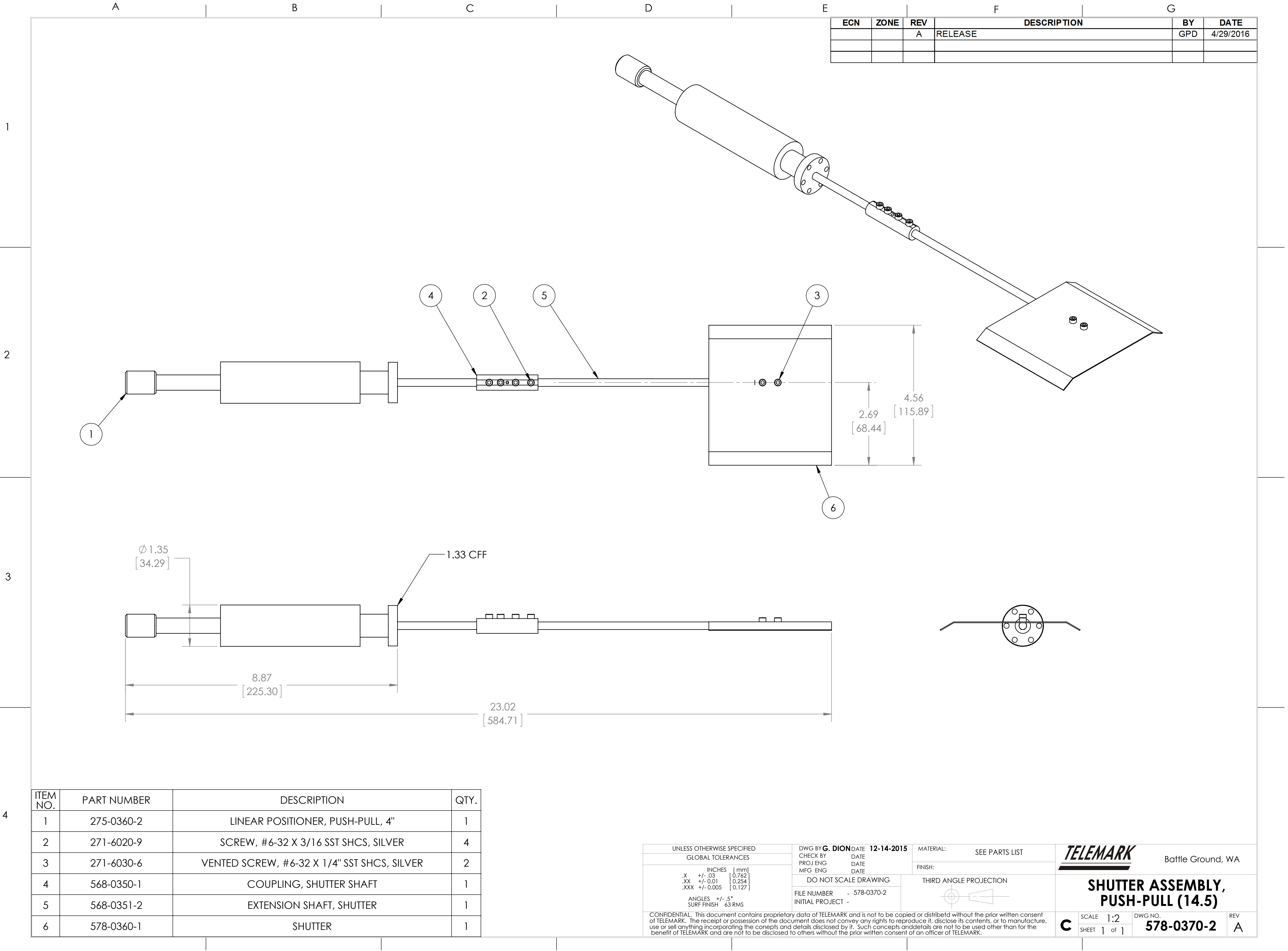
MATERIAL:	SEE PARTS LIST
FINISH:	
THIRD ANGLE PROJECTION	

Battle Ground, WA

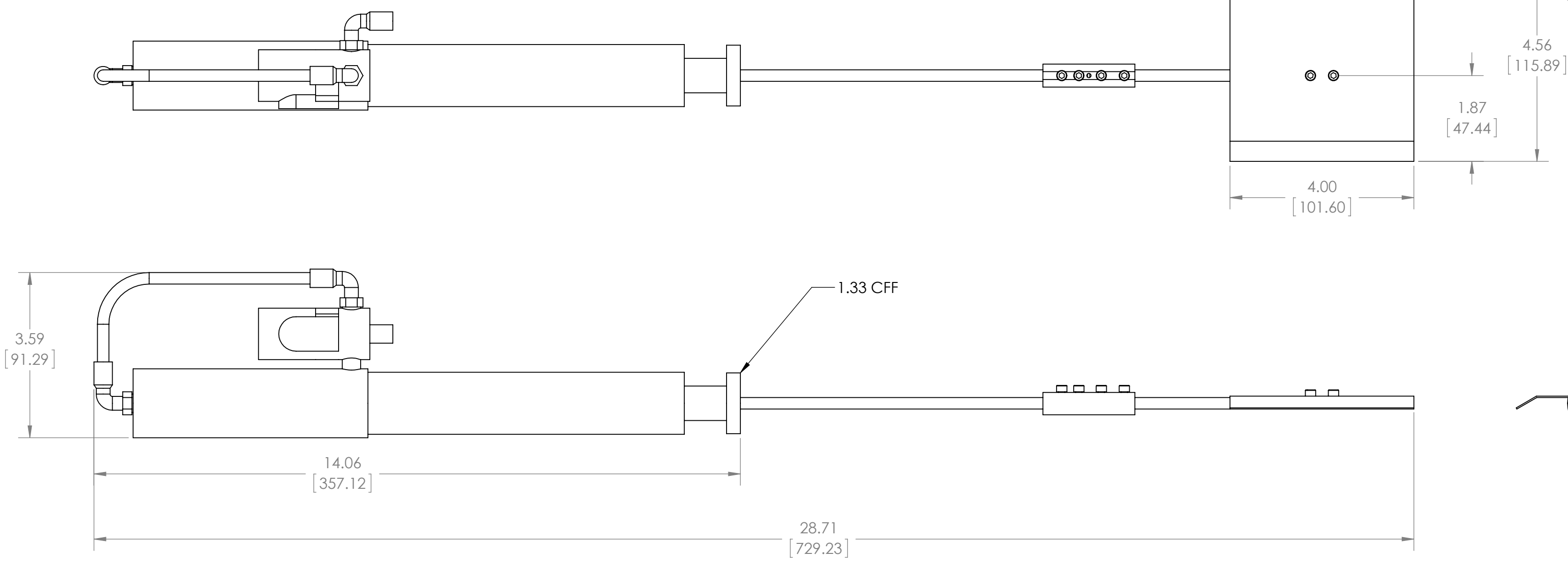
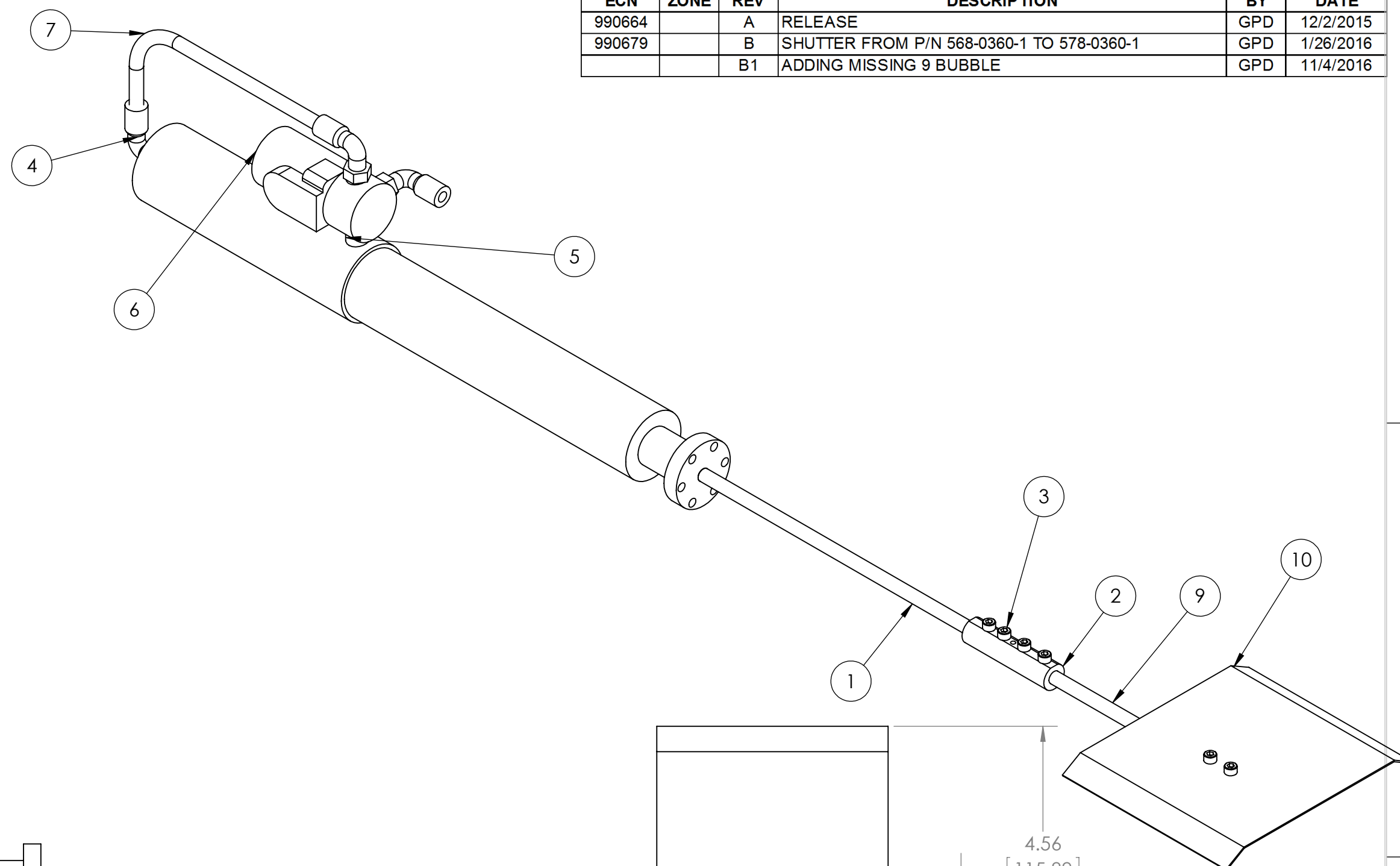
578 SOURCE SUB ASSEMBLY




C	SCALE 1:2	DWG NO. 578-0135-2	REV A
	SHEET 1 of 1		

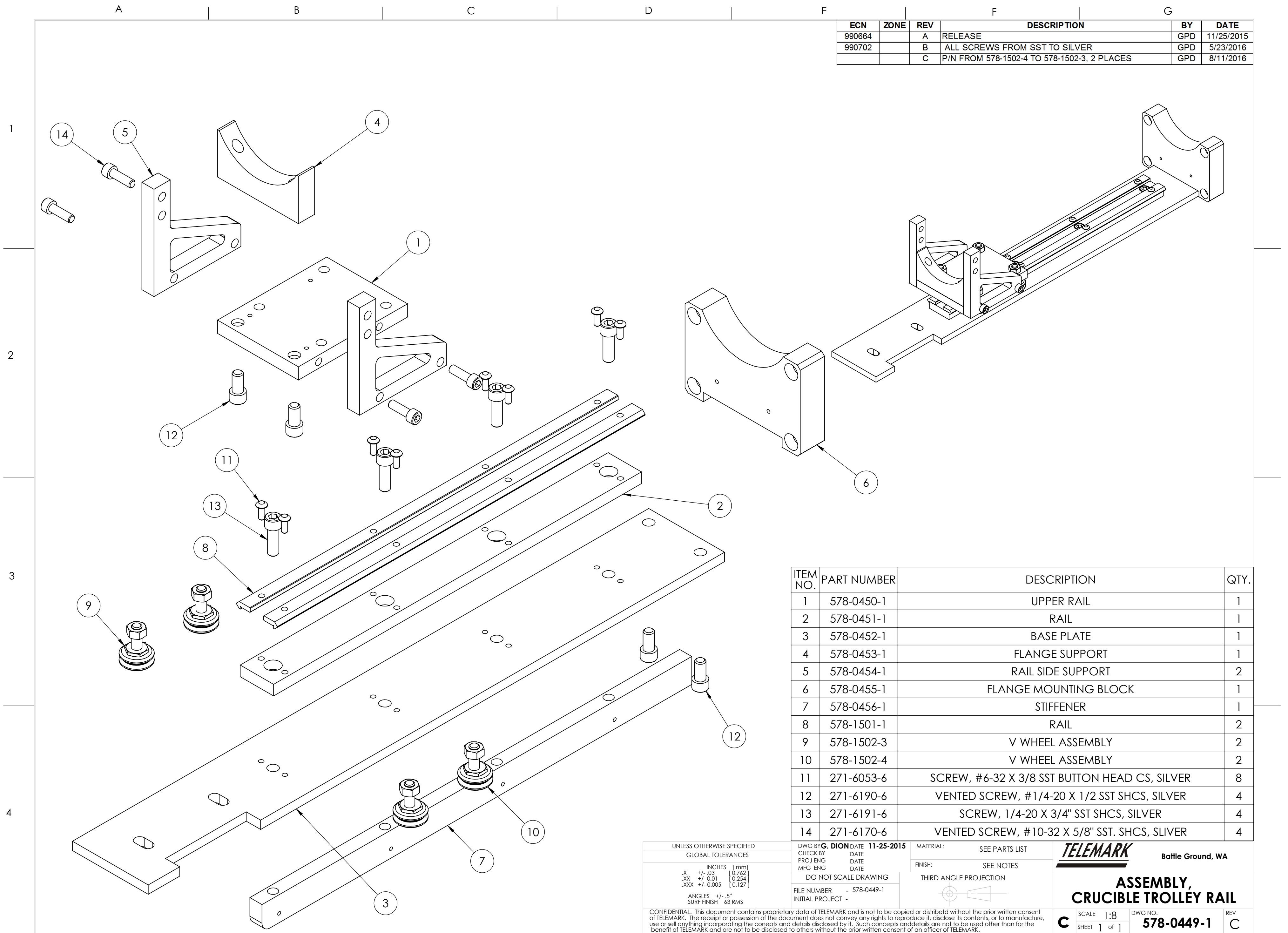
CONFIDENTIAL. This document contains proprietary data of TELEMARK and is not to be copied or distributed without the prior written consent of TELEMARK. The receipt or possession of the document does not convey any rights to reproduce it, disclose its contents, or to manufacture, use or sell anything incorporating the concepts and details disclosed by it. Such concepts and details are not to be used other than for the benefit of TELEMARK and are not to be disclosed to others without the prior written consent of an officer of TELEMARK.



A		B	
ITEM NO.	PART NUMBER	DESCRIPTION	QTY.
1	275-0360-1	PNEUMATIC LINEAR POSITIONER, 4"	1
2	568-0350-1	COUPLING, SHUTTER SHAFT	1
3	271-6020-9	SCREW, #6-32 X 3/16 SST SHCS, SILVER	4
4	275-0356-2	FITTING, 90 DEGREE, 1/4" TUBE X 1/8" NPT	3
5	275-0358-1	NIPPLE, 1/8" NPT	1
6	275-0361-2	SOLENOID, 4 WAY, 12VDC	1
7	275-0353-3	TUBE, 1/4" POLYURETHANE	1
8	271-6030-6	VENTED SCREW, #6-32 X 1/4" SST SHCS, SILVER	2
9	578-0351-2	SHAFT, SHUTTER	1
10	578-0360-1	SHUTTER	1



UNLESS OTHERWISE SPECIFIED		DWG BY G. DION DATE 12-2-2015		MATERIAL: SEE PARTS LIST		 Battle Ground, WA	
GLOBAL TOLERANCES		CHECK BY _____ DATE _____ PROJ ENG _____ DATE _____ MFG ENG _____ DATE _____		FINISH: SEE NOTES			
INCHES [mm] .X +/- .03 [0.762] .XX +/- .01 [0.254] .XXX +/- .005 [0.127]		DO NOT SCALE DRAWING		THIRD ANGLE PROJECTION			
ANGLES +/- .5° SURF FINISH 63 RMS		FILE NUMBER - 578-0388-1 INITIAL PROJECT -					
CONFIDENTIAL. This document contains proprietary data of TELEMARK and is not to be copied or distributed without the prior written consent of TELEMARK. The receipt or possession of the document does not convey any rights to reproduce it, disclose its contents, or to manufacture, use or sell anything in which such concepts and/or details are embodied by it. Such concepts and/or details are not to be used for any other than for the benefit of TELEMARK and are not to be disclosed to others without the prior written consent of an officer of TELEMARK.							
		SCALE 1:2		DWG NO. 578-0388-1		REV	
		SHEET 1 of 1				B1	



ECN	ZONE	REV	DESCRIPTION	BY	DATE
990664		A	RELEASE	GPD	11/25/2015
990702		B	ALL SCREWS FROM SST TO SILVER	GPD	5/23/2016
		C	P/N FROM 578-1502-4 TO 578-1502-3, 2 PLACES	GPD	8/11/2016

ITEM NO.	PART NUMBER	DESCRIPTION	QTY.
1	578-0450-1	UPPER RAIL	1
2	578-0451-1	RAIL	1
3	578-0452-1	BASE PLATE	1
4	578-0453-1	FLANGE SUPPORT	1
5	578-0454-1	RAIL SIDE SUPPORT	2
6	578-0455-1	FLANGE MOUNTING BLOCK	1
7	578-0456-1	STIFFENER	1
8	578-1501-1	RAIL	2
9	578-1502-3	V WHEEL ASSEMBLY	2
10	578-1502-4	V WHEEL ASSEMBLY	2
11	271-6053-6	SCREW, #6-32 X 3/8 SST BUTTON HEAD CS, SILVER	8
12	271-6190-6	VENTED SCREW, #1/4-20 X 1/2 SST SHCS, SILVER	4
13	271-6191-6	SCREW, 1/4-20 X 3/4" SST SHCS, SILVER	4
14	271-6170-6	VENTED SCREW, #10-32 X 5/8" SST. SHCS, SLIVER	4

UNLESS OTHERWISE SPECIFIED
GLOBAL TOLERANCES

	INCHES	[mm]
X	+/- .03	[0.762]
.XX	+/- 0.01	[0.254]
.XXX	+/- 0.005	[0.127]
ANGLES	+/- .5°	
SURF FINISH	.63 RMS	

DWG BY: **G. DION** DATE: **11-25-2015**

CHECK BY: DATE:

PROJ ENG: DATE:

MFG ENG: DATE:

DO NOT SCALE DRAWING

FILE NUMBER - 578-0449-1

INITIAL PROJECT -

MATERIAL: SEE PARTS LIST

FINISH: SEE NOTES

THIRD ANGLE PROJECTION

TELEMARK
Battle Ground, WA

**ASSEMBLY,
CRUCIBLE TROLLEY RAIL**

SCALE 1:8 DWG NO. 578-0449-1 REV C
SHEET 1 of 1

CONFIDENTIAL. This document contains proprietary data of TELEMARK and is not to be copied or distributed without the prior written consent of TELEMARK. The receipt or possession of the document does not convey any rights to reproduce it, disclose its contents, or to manufacture, use or sell anything incorporating the concepts and details disclosed by it. Such concepts and details are not to be used other than for the benefit of TELEMARK and are not to be disclosed to others without the prior written consent of an officer of TELEMARK.